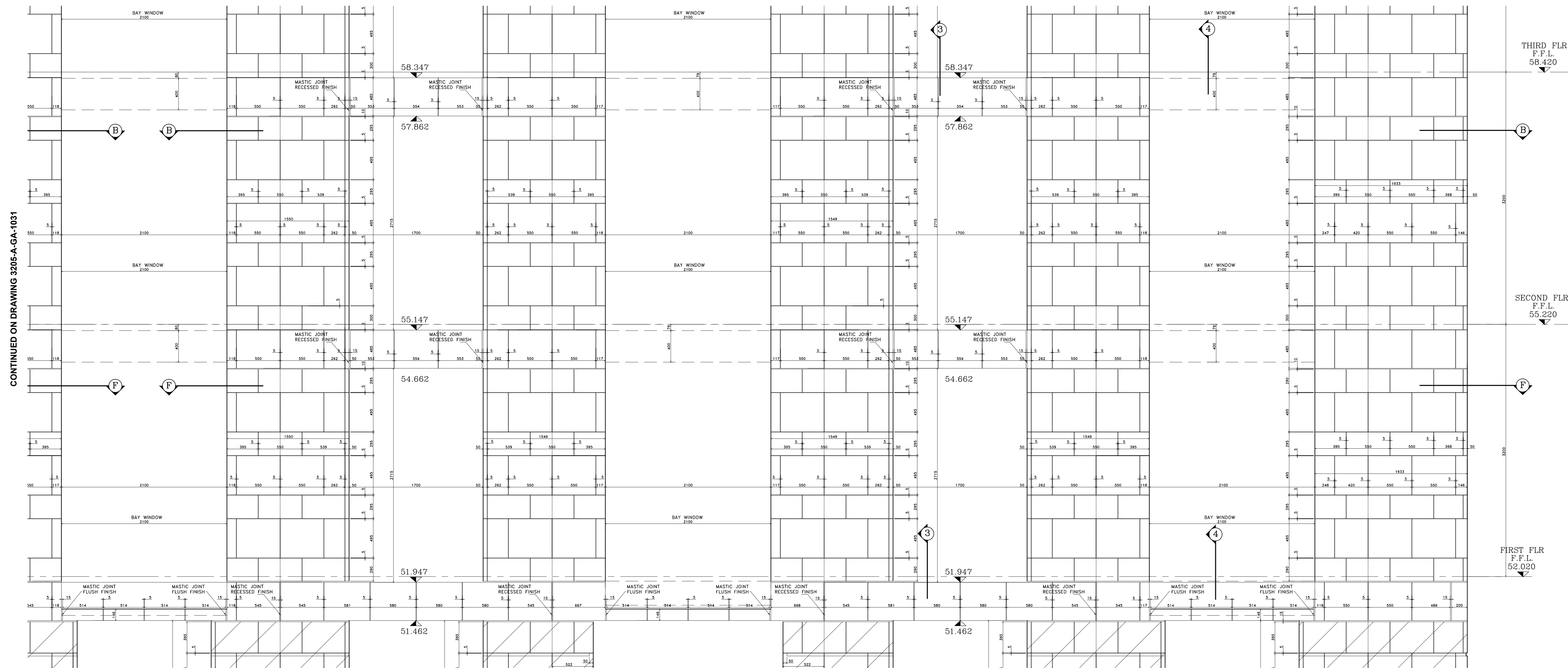
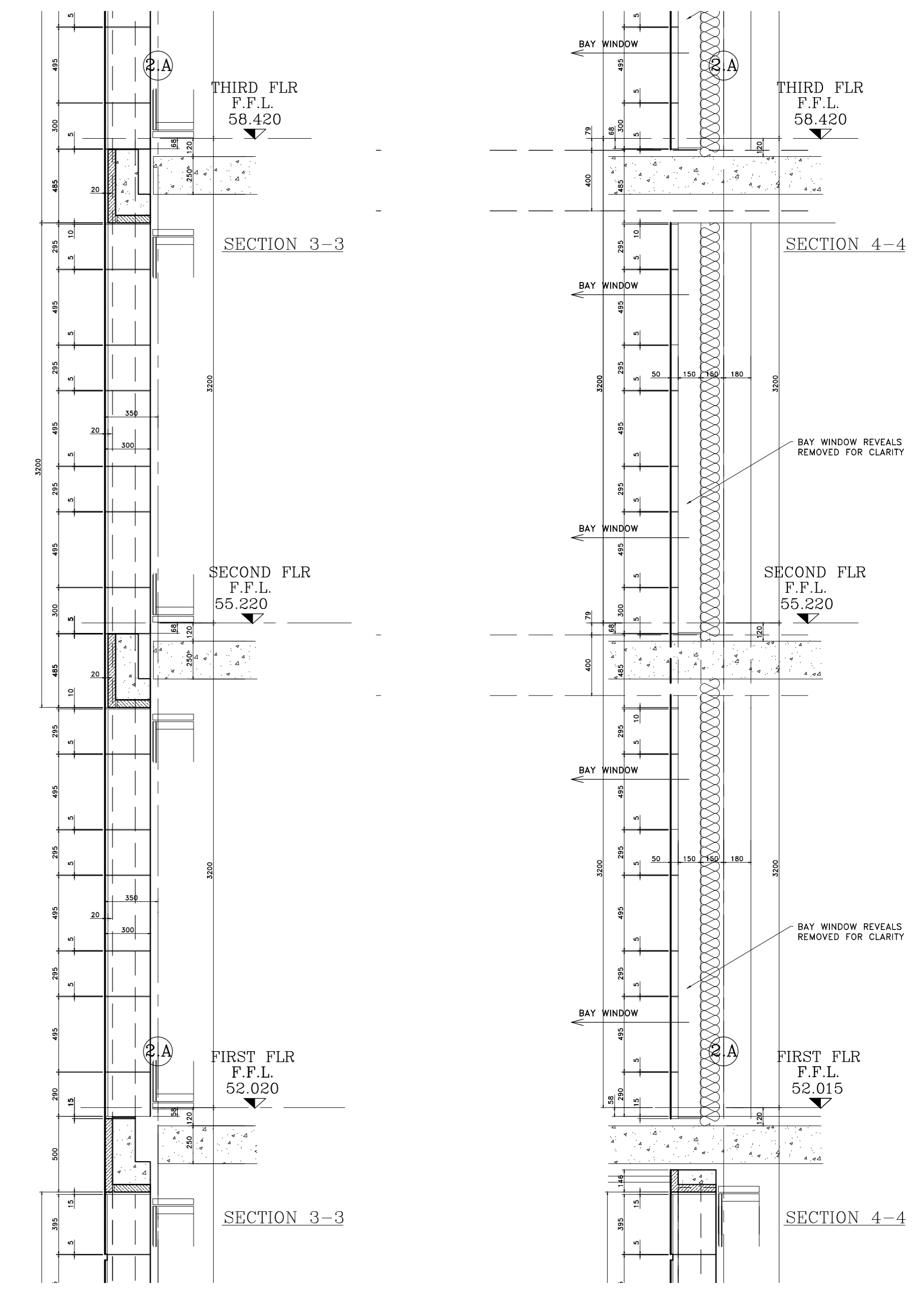


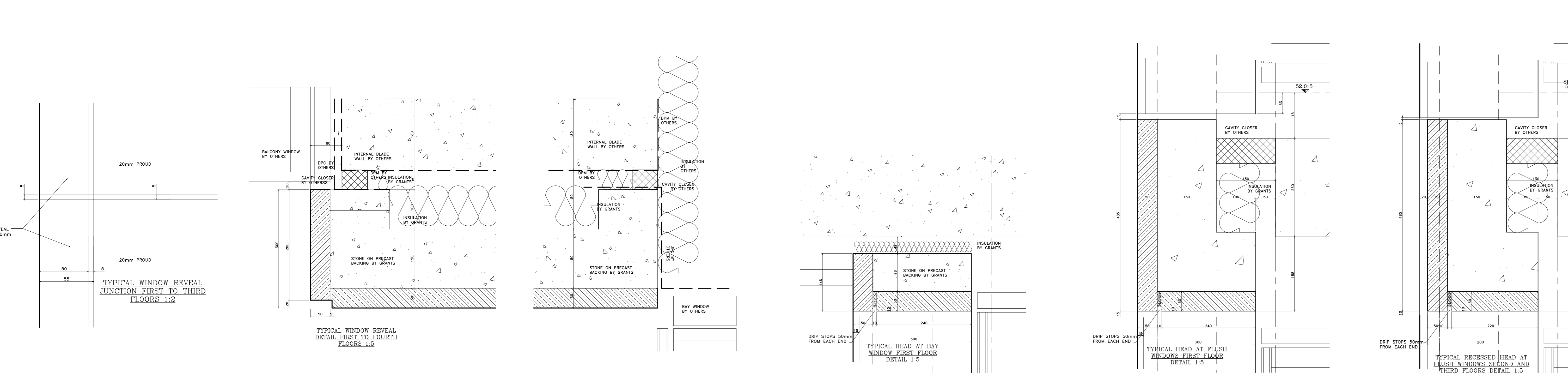
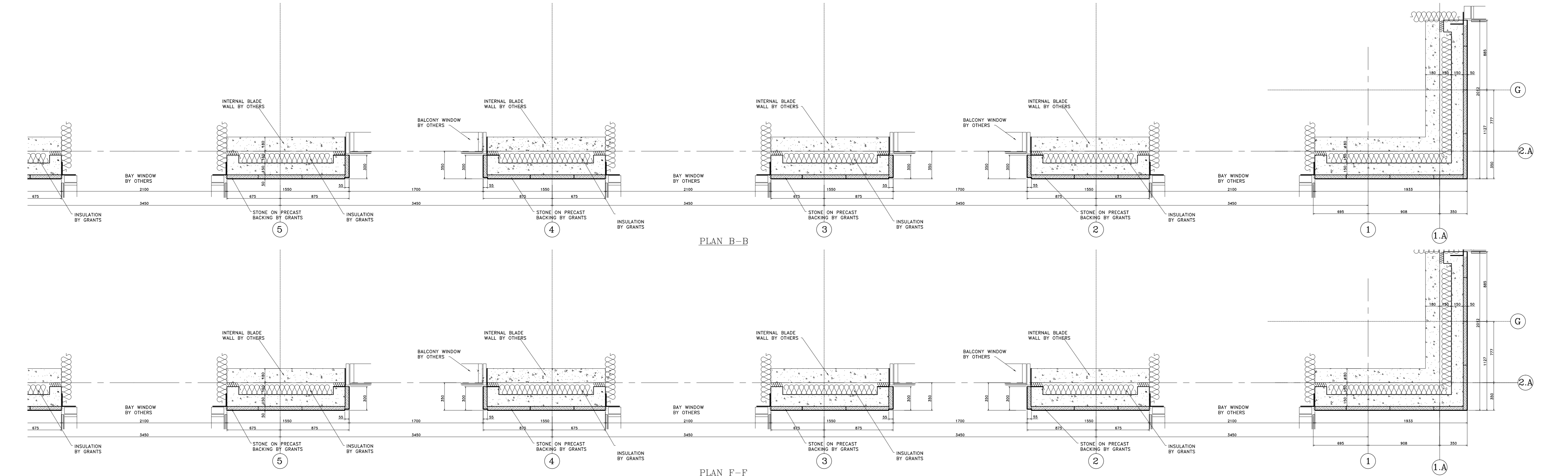
CONTINUED ON DRAWING 3205-A-GA-1038



CONTINUED ON DRAWING 3205-A-GA-1027



CONTINUED ON DRAWING 3205-A-GA-1026



**Notes:**  
 STONE TYPE TO RUSTICATED STONEWORK TO BE PORTLAND BOWERS ROACH SAMPLE AND RANGE TO BE APPROVED.  
 STONE TYPE TO NON RUSTICATED STONEWORK TO BE PORTLAND FANCY BEACH WHITBED SAMPLE AND RANGE TO BE APPROVED.  
 STONE TYPE TO PLINTH STONEWORK TO BE GRANITE (SAMPLE TO BE APPROVED).  
 STANDARD JOINTS TO BE 5mm FULLY POINTED TO APPROVED SAMPLE.  
 ALL MASTIC JOINTS TO MATCH APPROVED SAMPLES.  
 ALL FIXING RESTRAINTS TO BE STAINLESS STEEL GRADE 304 AND TO BE ISOLATED FROM THE MILD STEEL TO PREVENT BIMETALLIC REACTION.  
 ALL STONES SHOULD HAVE NUMBERS MARKED ON UNSEEN FACES AND BE PROVIDED AS PER THE CUTTING SCHEDULES.  
 INSULATION TO BE KINGSPAN TWISS.  
 ALL WATERPROOFING DPM BY OTHERS.

CDM Regulations  
 Design Risk Assessment:  
 The size and shape of individual stones for this project have been designed to satisfy the overall design requirements for the building. All persons handling and installing such stones should be aware that there are risks associated with this type of work that cannot be designed out.  
 RISK: INJURY  
 Risk Reduction:  
 Fixers must be suitably experienced in the handling of stones and employ lifting methods appropriate to the size and shape of that component. Access and platforms must be to the standard required by current legislation.  
 References must always be made to COSHH information for the materials being used.

A Updated to Architects comments. 23.05.13  
 Rev: Reason For Issue Date

This drawing is the property of Grants and is to be used only for the contracted parties.  
 Grants are not responsible for any errors occurring through the use of this drawing by other parties.  
 Do not scale drawings.

**GRANTS**  
 GRANTS OF SHOREDITCH LTD  
 GRANTS HOUSE, PROSPECT WAY  
 HATFIELD, BRENTWOOD  
 ESSEX, CM13 1XD  
 0203 770300 Fax 0203 791300  
 E: info@grants.co.uk

Project:  
**ST EDMUNDS TERRACE  
 LONDON**

Architect:  
**SQUIRE AND PARTNERS**

Contractor:  
**MACE**

Drawing Title:  
**BLOCK 2  
 WEST ELEVATION RIGHT HAND END  
 FIRST TO THIRD FLOOR**

Drawn By: Checked By: Scale: Date: Revision:  
 J.M. 1:25@A0 03/05/13 A  
 Drawing No:  
**3205-A-GA-1032**