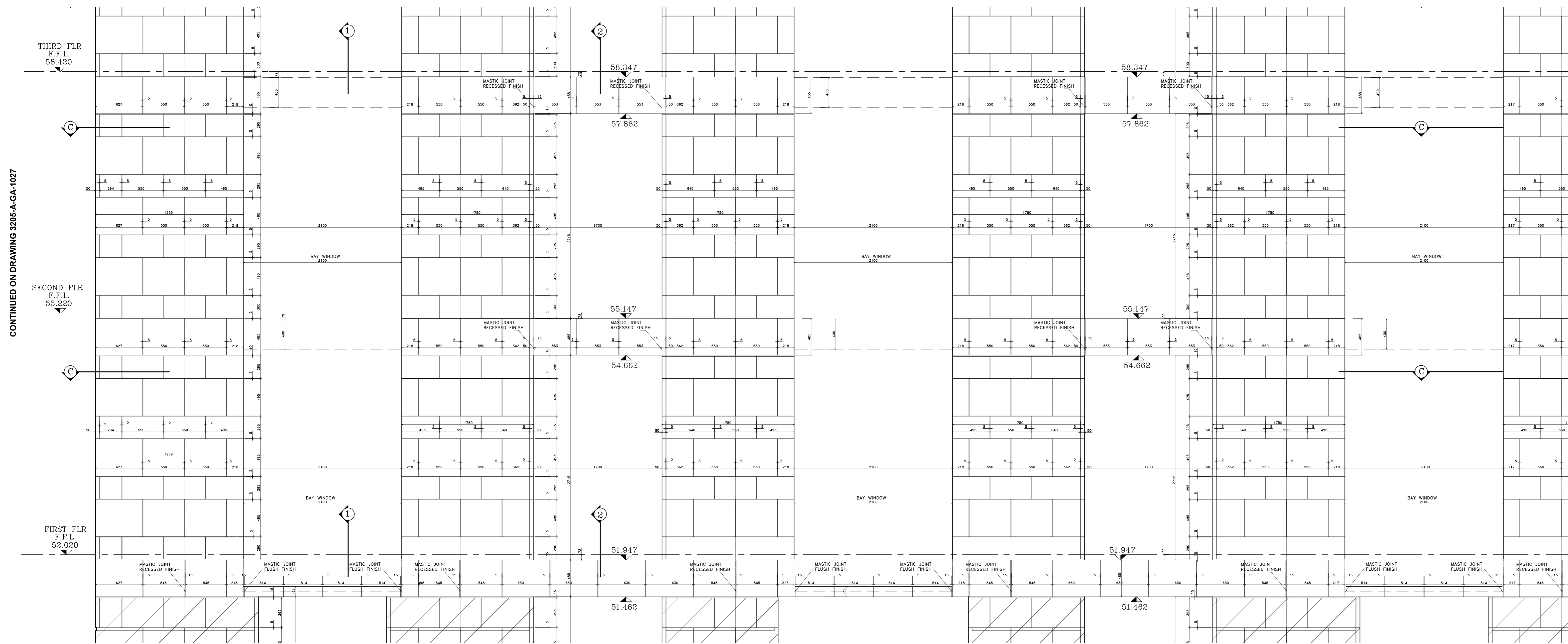
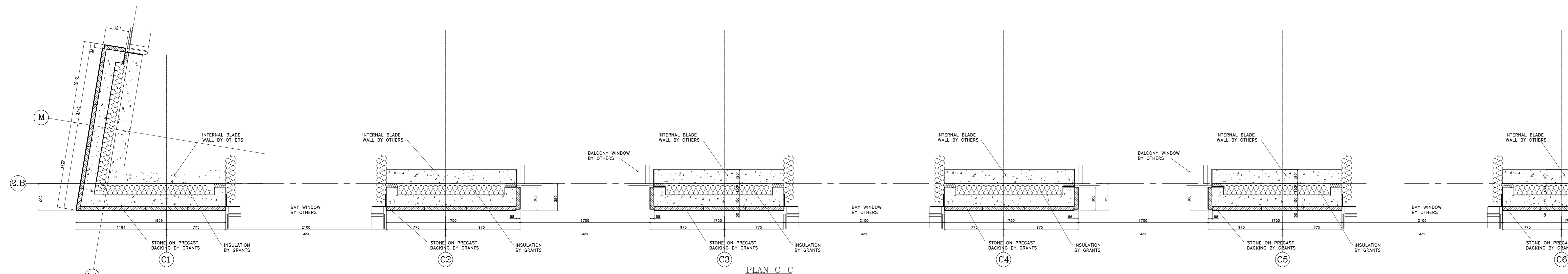
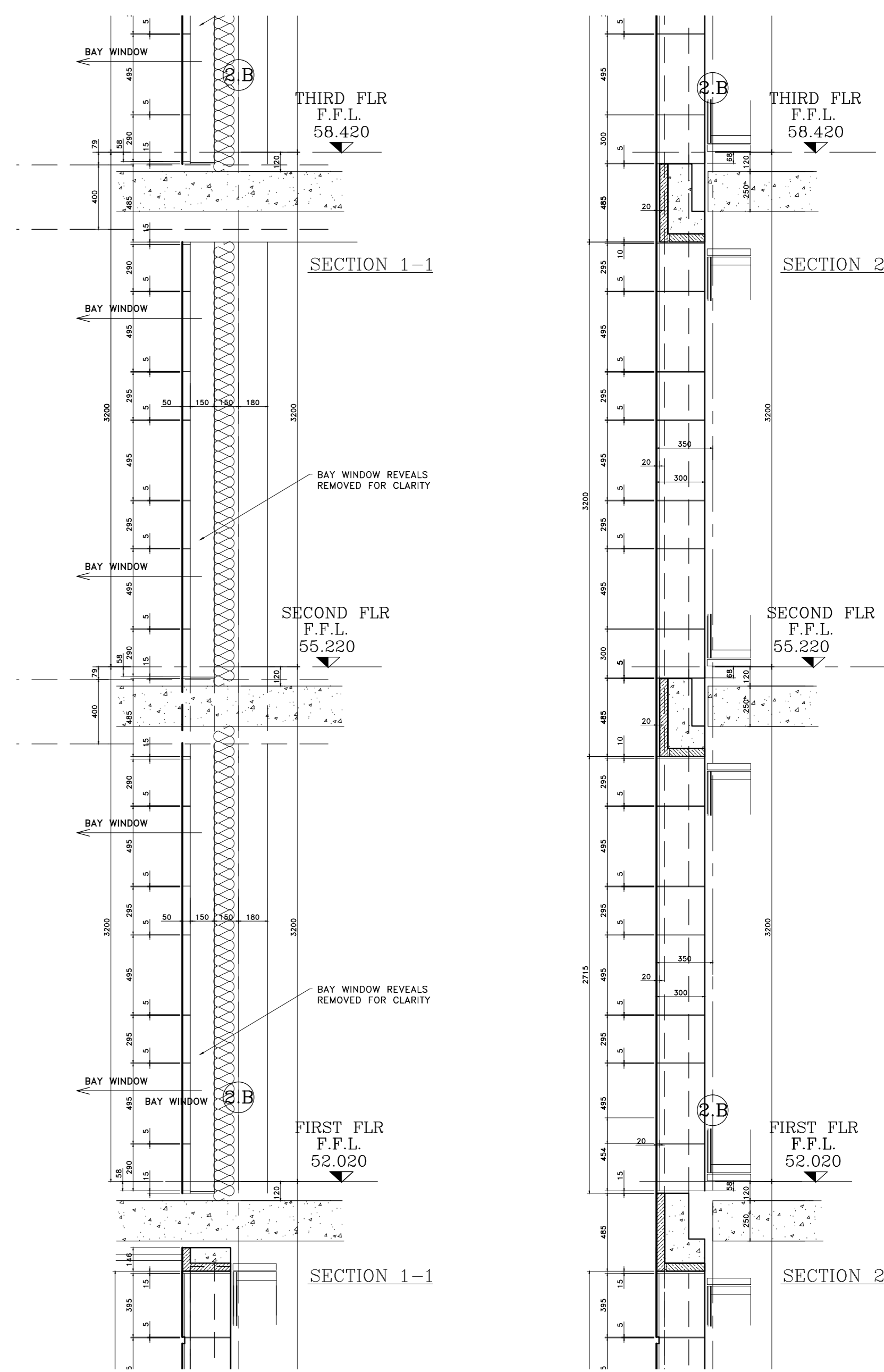


CONTINUED ON DRAWING 3205-A-GA-1034

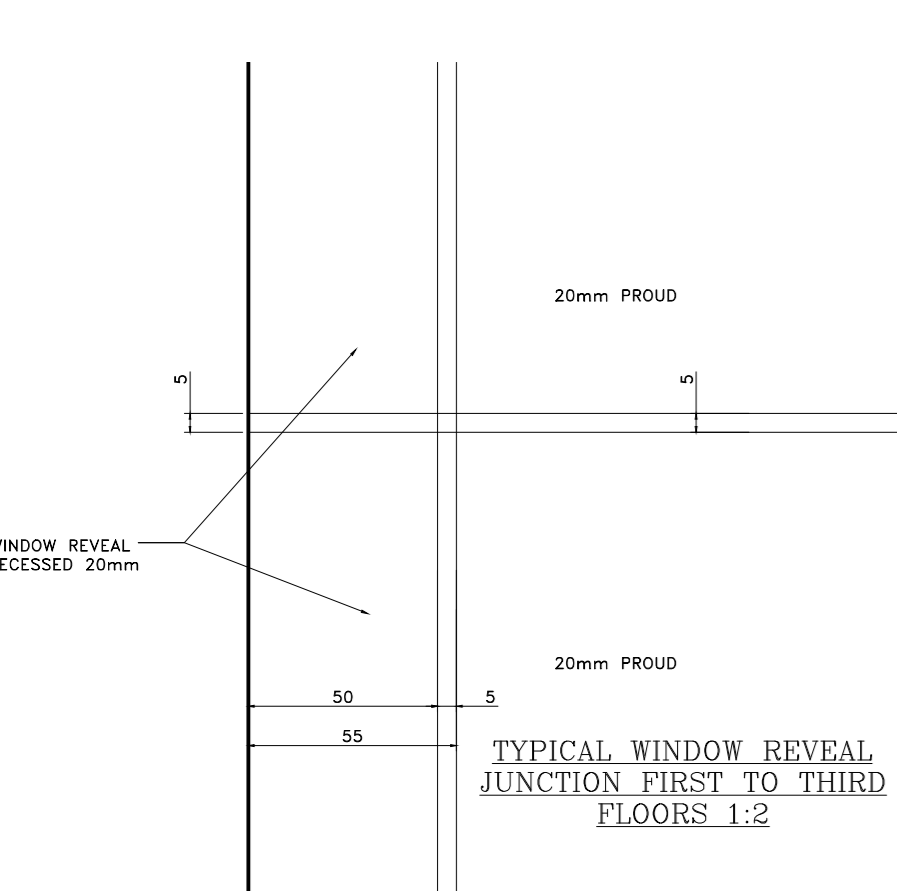


CONTINUED ON DRAWING 3205-A-GA-1023

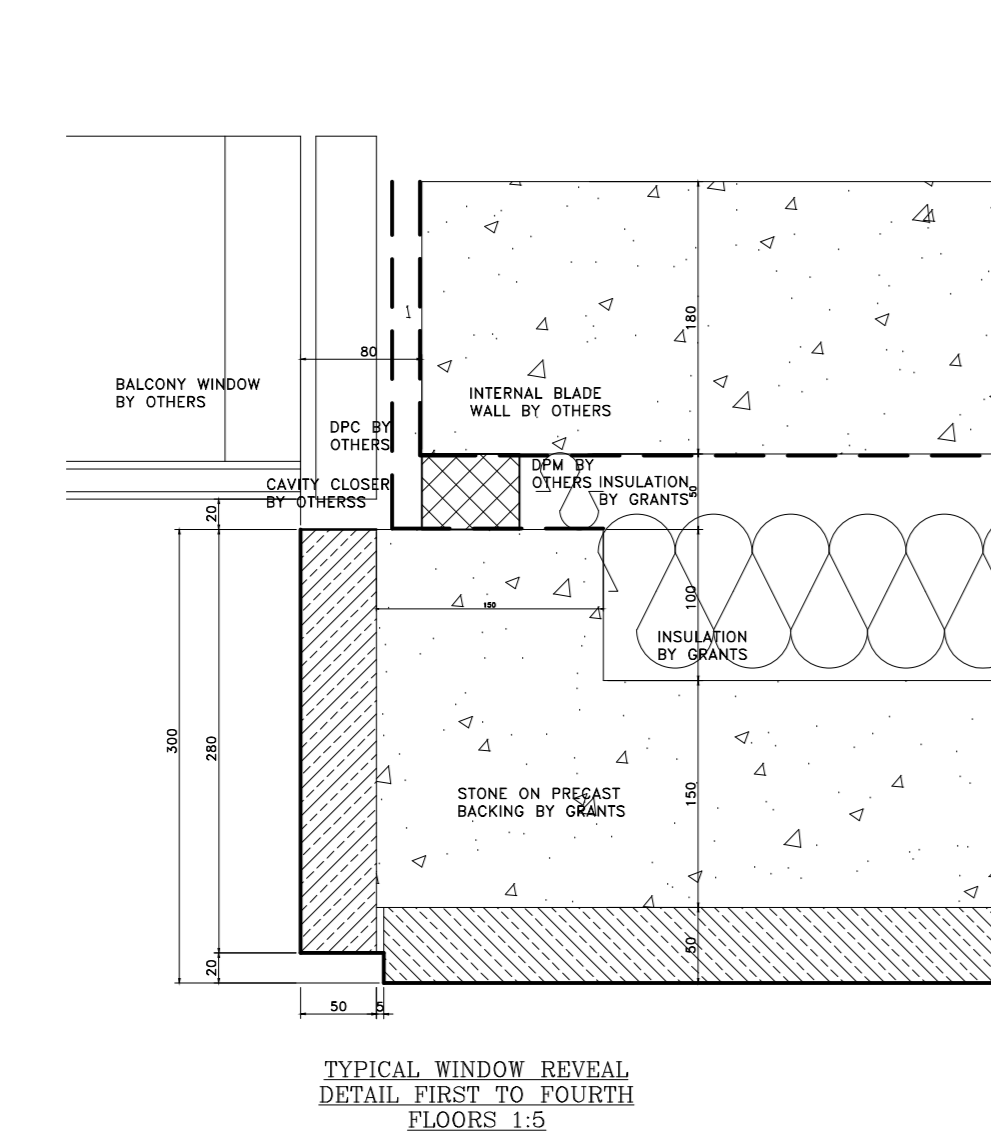
CONTINUED ON DRAWING 3205-A-GA-1029



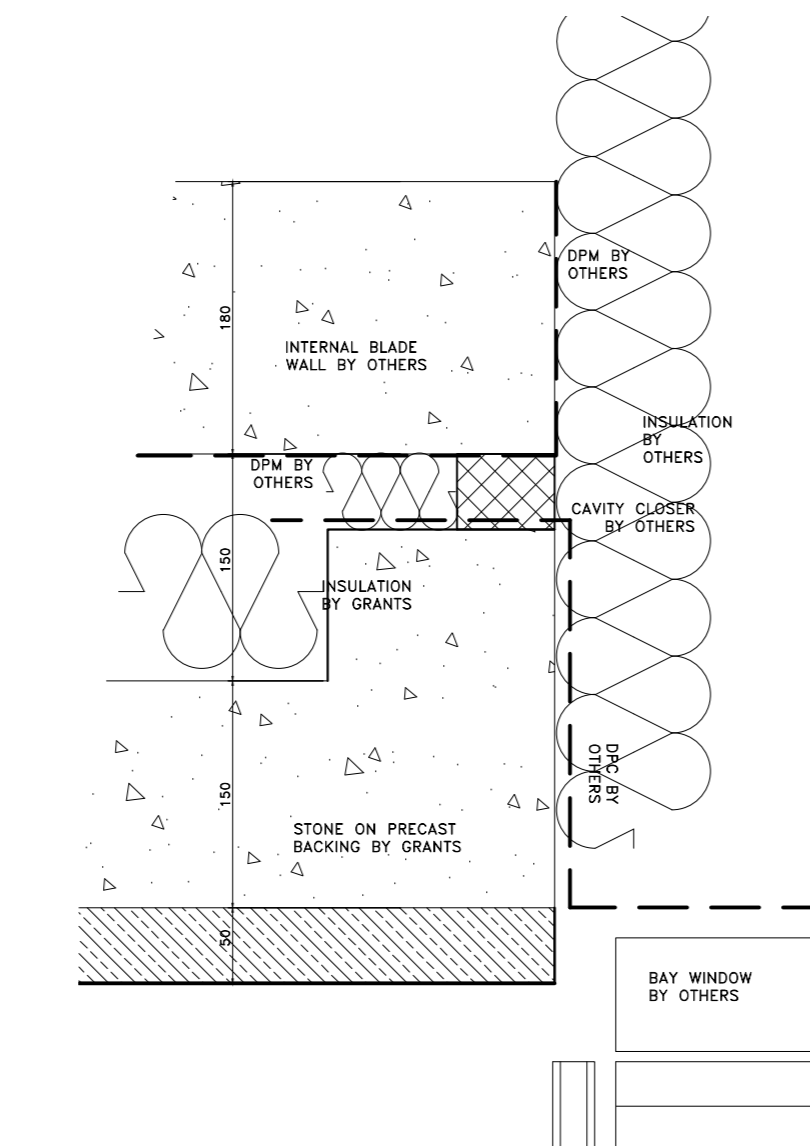
PLAN C-C



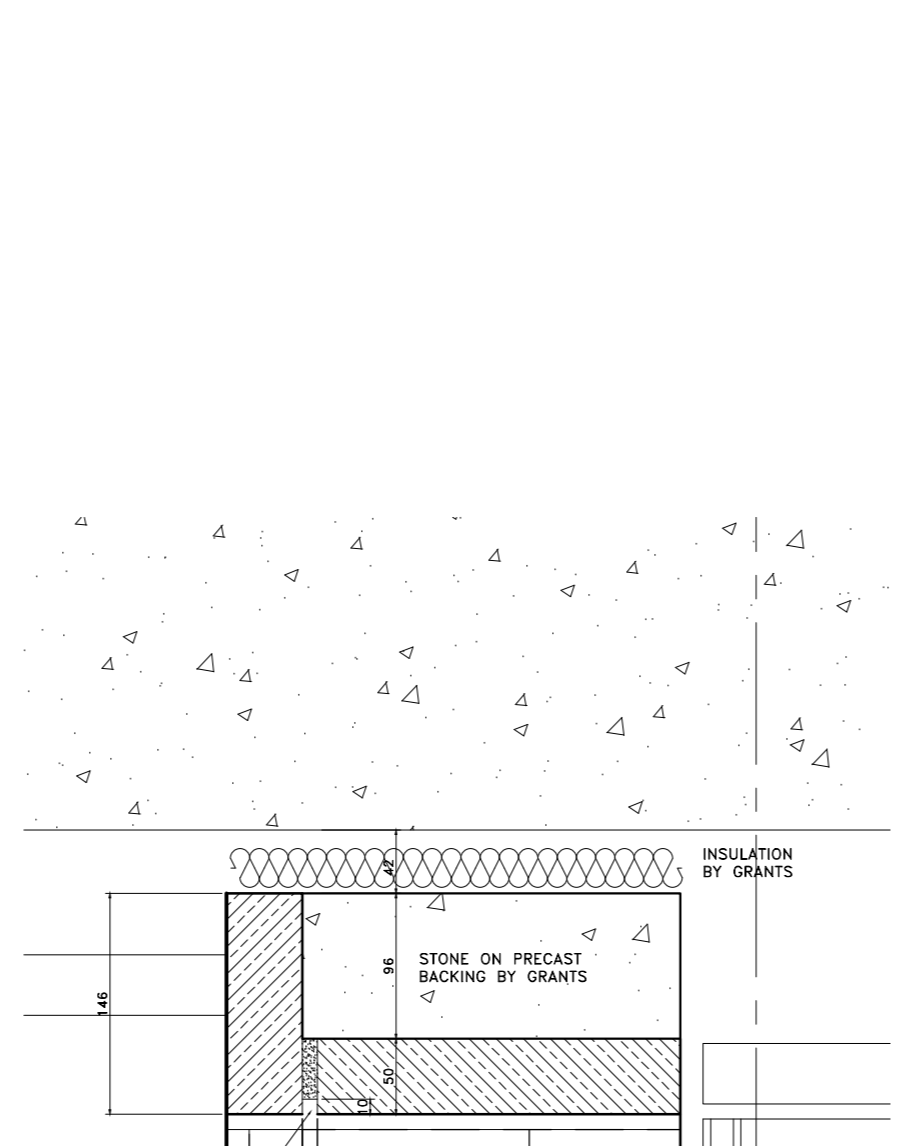
TYPICAL WINDOW REVEAL JUNCTION FIRST TO THIRD FLOORS 1:2



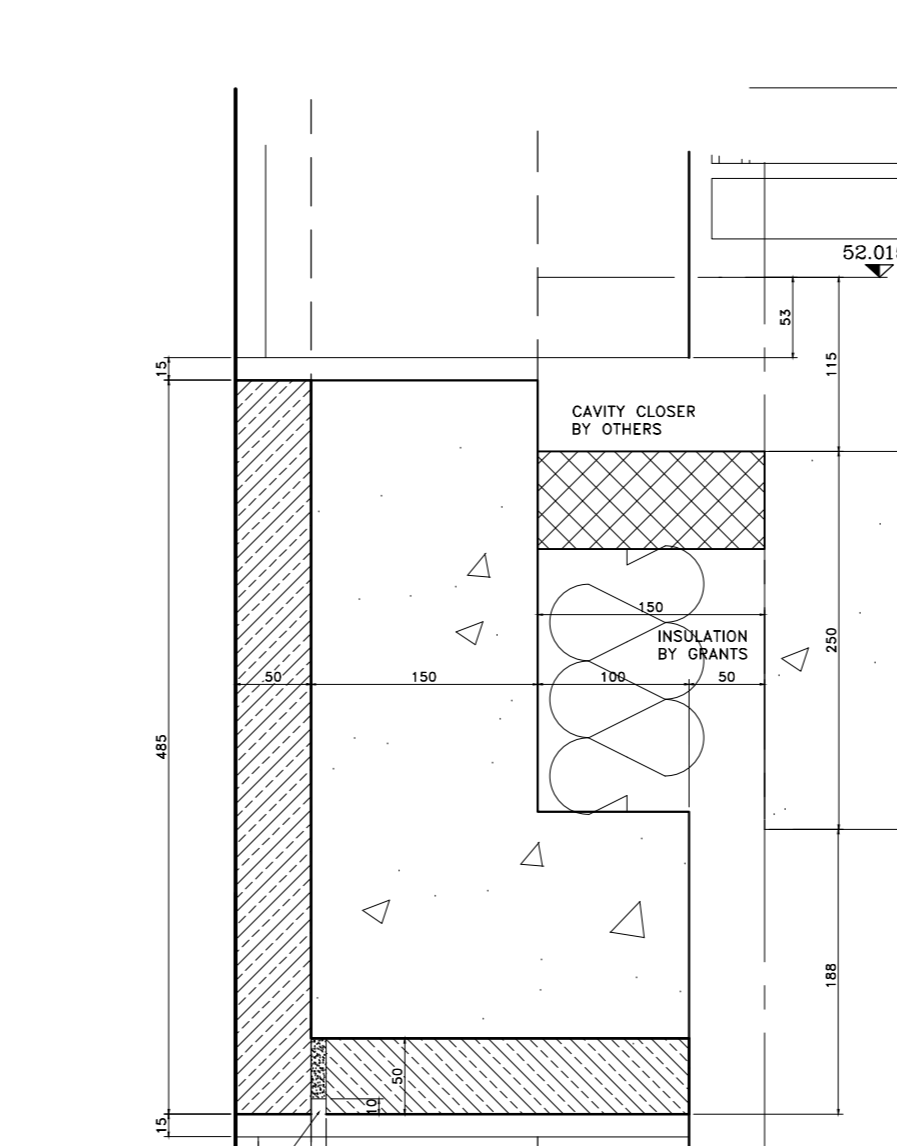
TYPICAL WINDOW REVEAL DETAIL FIRST TO FOURTH FLOORS 1:2



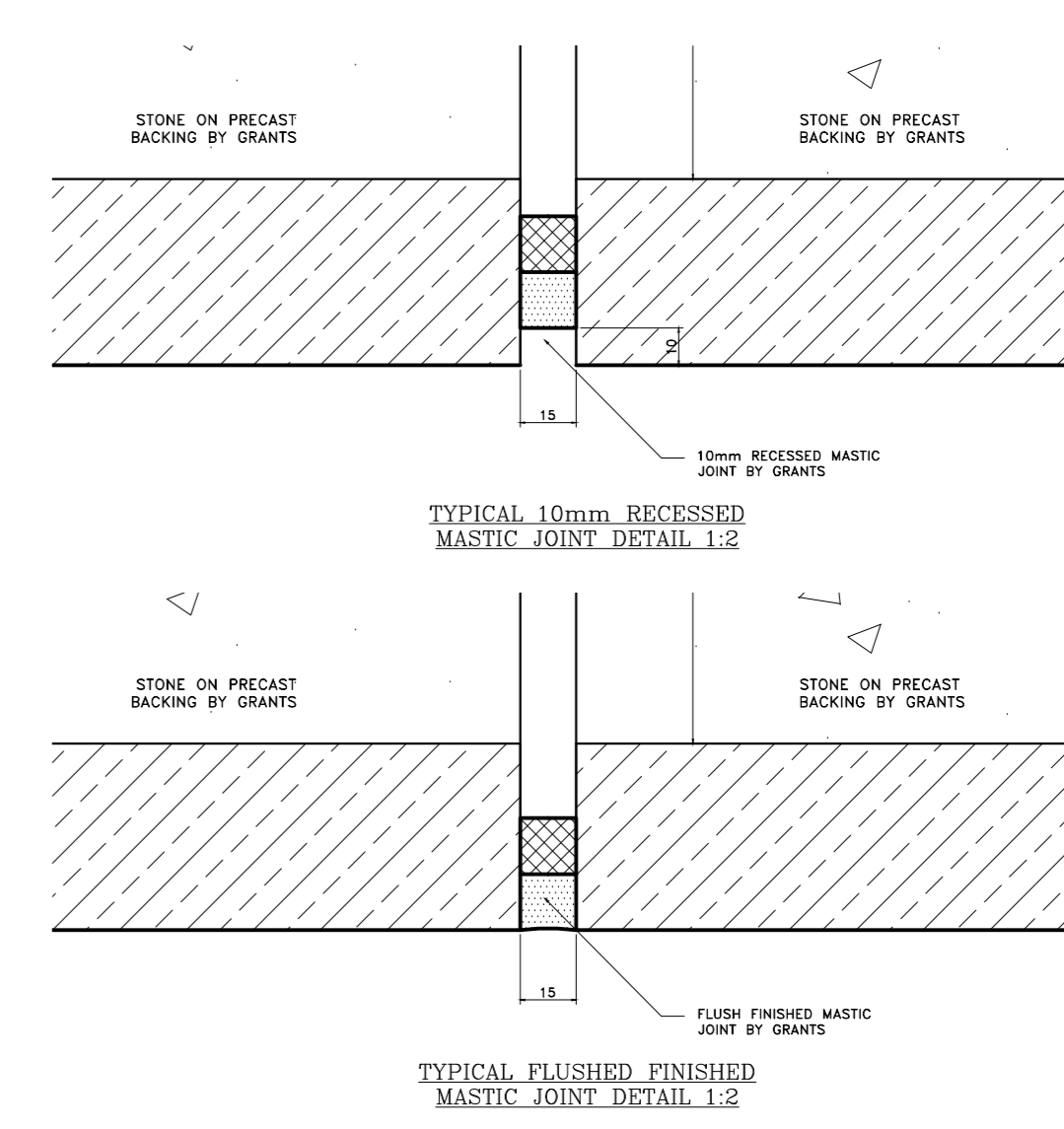
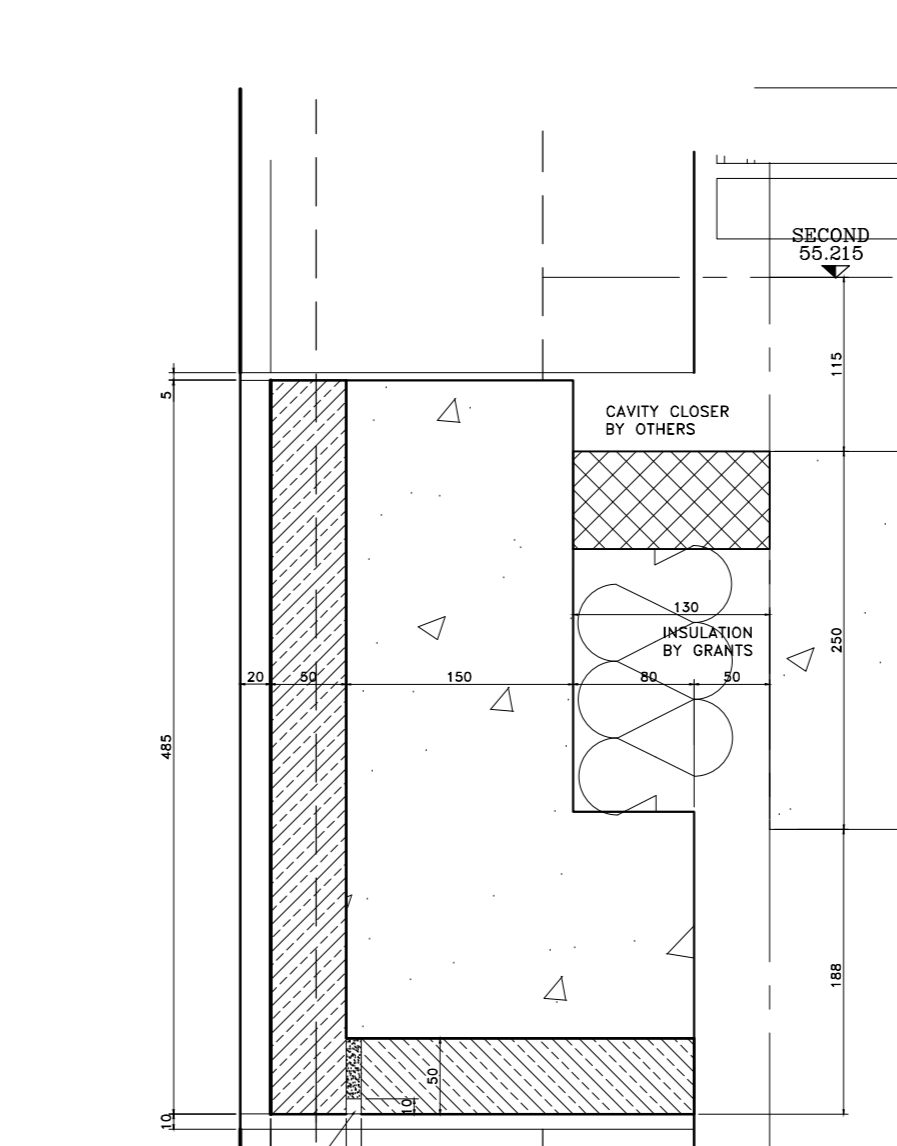
TYPICAL HEAD AT BAY WINDOW FIRST FLOOR DETAIL 1:2



TYPICAL HEAD AT FLUSH WINDOW FIRST FLOOR DETAIL 1:2



TYPICAL RECESSED HEAD AT FLUSH WINDOW SECOND AND THIRD FLOORS DETAIL 1:2



TYPICAL 10mm RECESSED MASTIC JOINT DETAIL 1:2

TYPICAL FLUSH FINISHED MASTIC JOINT DETAIL 1:2

**Notes:**

- STONE TYPE TO RUSTICATED STONEMWORK TO BE PORTLAND BOWERS ROACH SAMPLE AND RANGE TO BE APPROVED.
- STONE TYPE TO NON RUSTICATED STONEMWORK TO BE PORTLAND FANCY BEACH WHITBED SAMPLE AND RANGE TO BE APPROVED.
- STONE TYPE TO PLINTH STONEMWORK TO BE GRANITE (SAMPLE TO BE APPROVED).
- STANDARD JOINTS TO BE 5mm FULLY POINTED TO APPROVED SAMPLE.
- ALL MASTIC JOINTS TO MATCH APPROVED SAMPLES.
- ALL FIXING RESTRAINTS TO BE STAINLESS STEEL GRADE 304 AND TO BE ISOLATED FROM THE MILD STEEL TO PREVENT BIMETALLIC REACTION.
- ALL STONES SHOULD HAVE NUMBERS MARKED ON UNSEEN FACES AND BE PROVIDED AS PER THE CUTTING SCHEDULES.
- INSULATION TO BE KINGSPAN TWISS.
- ALL WATERPROOFING DPM BY OTHERS.

CDM Regulations  
Design Risk Assessment:  
The size and shape of individual stones for this project have been designed to satisfy the overall design requirements for the building. All persons transporting and installing such stones should be aware that there are risks associated with this type of work that cannot be designed out.

RSK: INJURY  
Risk Reduction:  
Fixers must be suitably experienced in the handling of stones and employ lifting methods appropriate to the size and shape of that component. Access and platforms must be to the standard required by current legislation.  
References must always be made to COSSH information for the materials being used.

Rev	Reason For Issue	Date
A	Updated to Architects comments.	26.05.13

This drawing is the property of Grants and is to be used only for the contracted project.  
Grants are not responsible for any errors occurring through the use of this drawing by other parties.  
© 2013 Grants Ltd

**GRANTS**  
GRANTS OF SHOREDITCH LTD  
GRANTS HOUSE, PROSPECT WAY  
MUTUAL BRENTWOOD  
ESSEX, CM13 1XD  
Tel: 01276 330000 Fax: 01276 330000  
E: sales@grantsltd.com

Project:  
**ST EDMUNDS TERRACE LONDON**

Architect:  
**SQUIRE AND PARTNERS**

Contractor:  
**MACE**

Drawing Title:  
**BLOCK 2 EAST ELEVATION LEFT HAND END FIRST TO THIRD FLOOR**

Drawn By: **JM** Checked By: **SC** Scale: **1:25 @ A0** Date: **01/05/13** Revision: **A**  
Drawing No.: **3205-A-GA-1028**