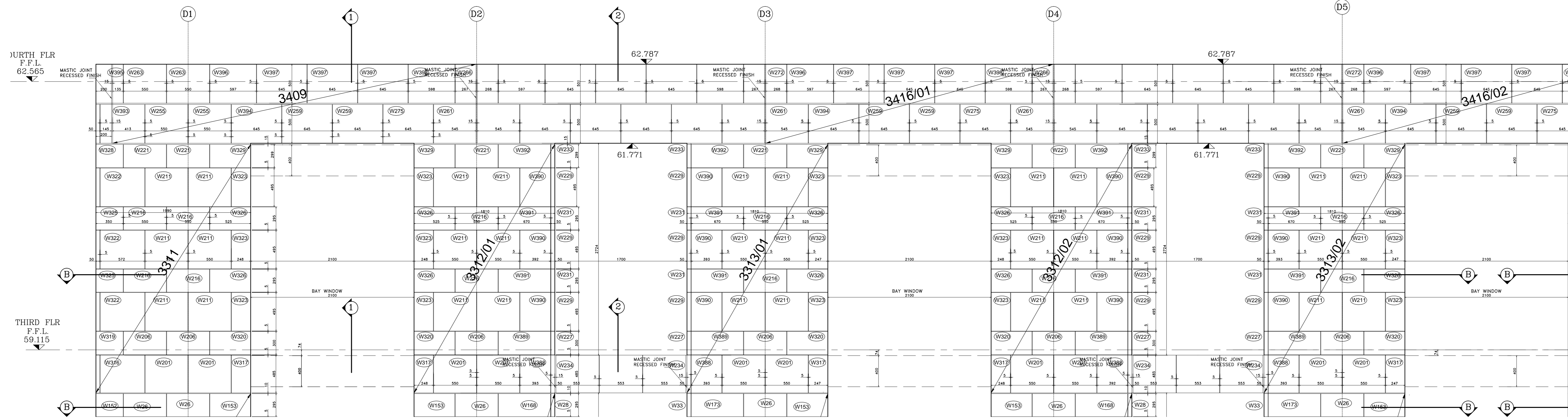
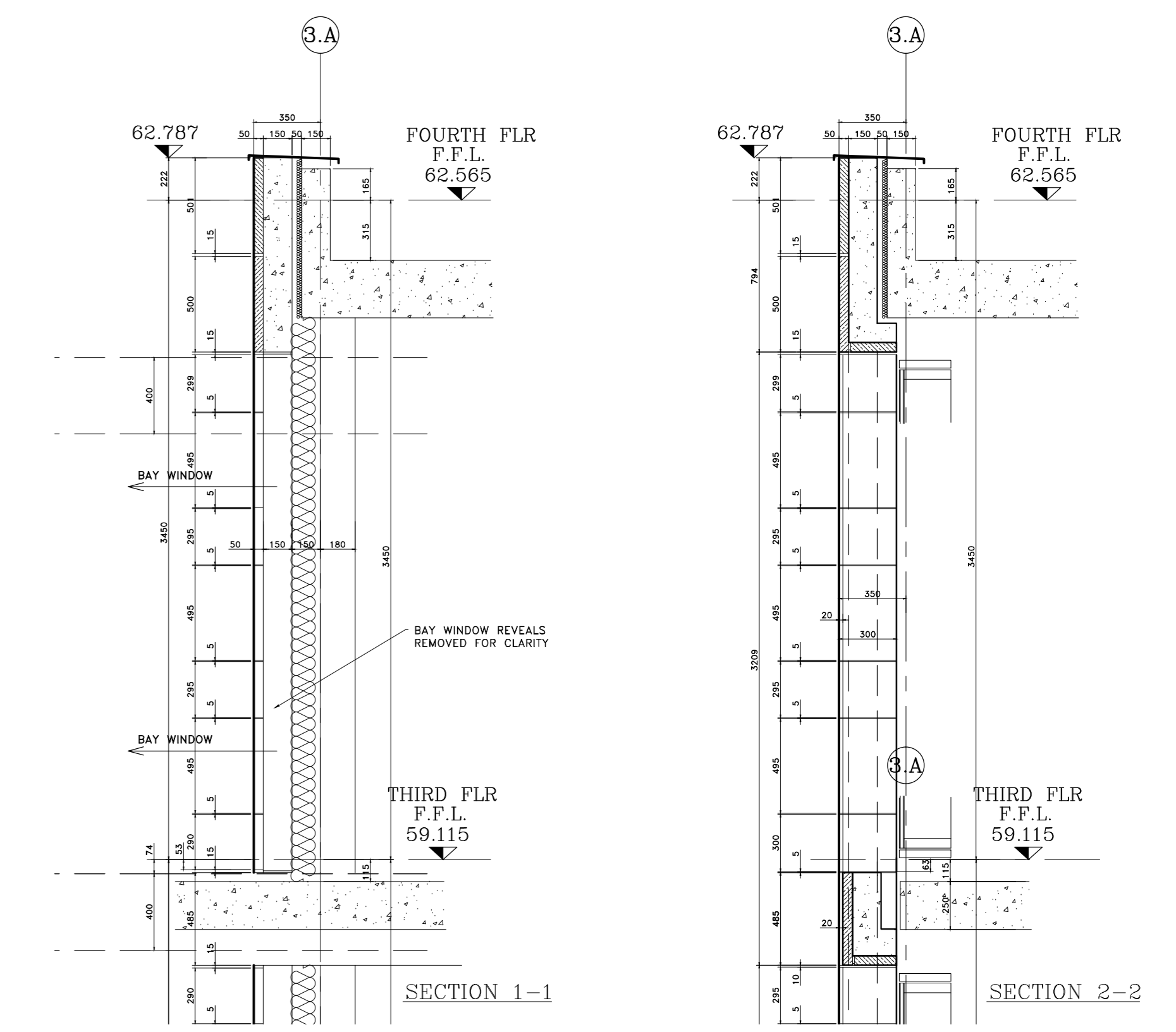


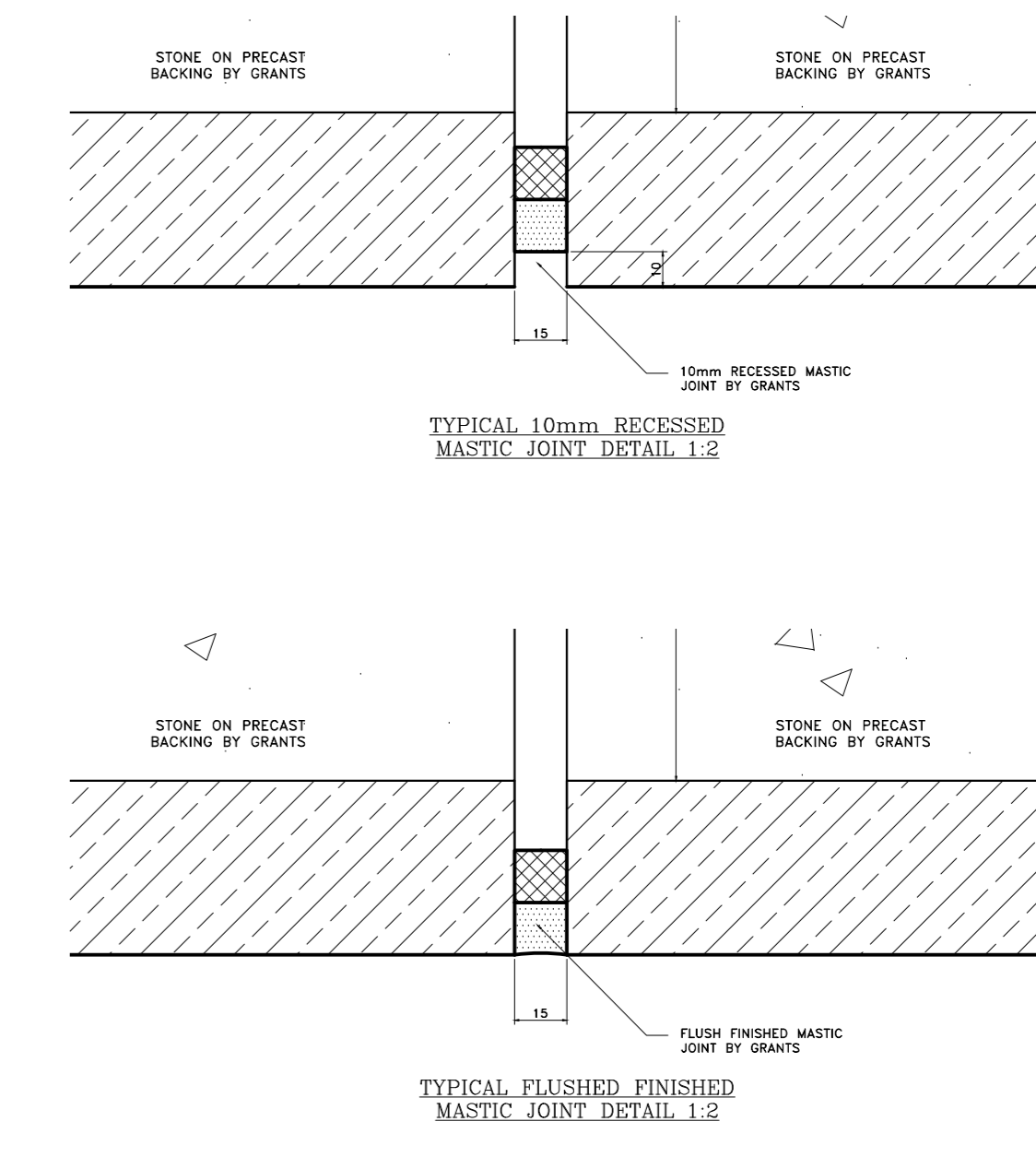
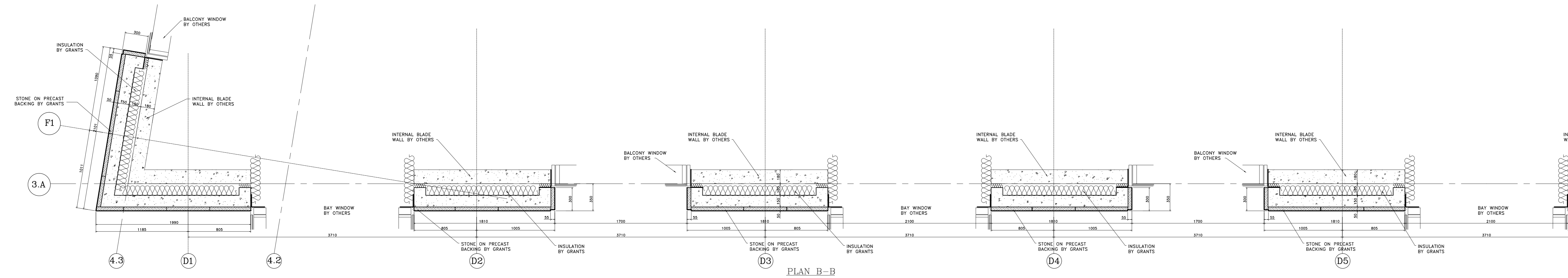
CONTINUED ON DRAWING 3205-A-GA-1019



CONTINUED ON DRAWING 3205-A-GA-1021



CONTINUED ON DRAWING 3205-A-GA-1013



Notes:

- STONE TYPE TO RUSTICATED STONEMWORK TO BE PORTLAND BOWERS ROACH SAMPLE AND RANGE TO BE APPROVED.
- STONE TYPE TO NON RUSTICATED STONEMWORK TO BE PORTLAND FANCY BEACH WHITBED SAMPLE AND RANGE TO BE APPROVED.
- STONE TYPE TO PLINTH STONEMWORK TO BE GRANITE (SAMPLE TO BE APPROVED).
- STANDARD JOINTS TO BE 6mm FULLY POINTED TO APPROVED SAMPLE.
- ALL MASTIC JOINTS TO MATCH APPROVED SAMPLES.
- ALL FIXING RESTRAINTS TO BE STAINLESS STEEL GRADE 304 AND TO BE ISOLATED FROM THE MILD STEEL TO PREVENT BIMETALLIC REACTION.
- ALL STONES SHOULD HAVE NUMBERS MARKED ON UNSEEN FACES AND BE PROVIDED AS PER THE CUTTING SCHEDULES.
- INSULATION TO BE KINGSPAN TWISS.
- ALL WATERPROOFING DPM BY OTHERS.

CDM Regulations
Design Risk Assessment:

The size and shape of individual stones for this project have been designed to satisfy the overall design requirements for the building. All persons handling and installing such stones should be aware that there are risks associated with this type of work that cannot be designed out.

RISK: INJURY
Risk Reduction:
Fixers must be suitably experienced in the handling of stones and employ lifting methods appropriate to the size and shape of that component. Access and platforms must be to the standards required by current legislation.
References must always be made to COSHH information for the materials being used.

| | | |
|------|-----------------------------------|----------|
| B | Stone and Panel references added. | 27.06.13 |
| A | Updated to Architects comments. | 17.05.13 |
| Rev: | Reason For Issue | Date |

This shop drawing is the property of Grants and is for the use only by the contracted parties. Grants are not responsible for any errors occurring through the use of this drawing by other parties. Do not scale drawings.

GRANTS
GRANTS OF SHOREDITCH LTD
GRANTS HOUSE, PROSPECT WAY
MUTUAL GREENWOOD
ESSEX, CM13 1XD
0203 2707000 Fax 020 703 0000
E mail: info@grants.co.uk

Project:
ST EDMUNDS TERRACE LONDON

Architect:
SQUIRE AND PARTNERS

Contractor:
MAACE

Drawing Title:
BLOCK 3 WEST ELEVATION LEFT HAND END THIRD TO FOURTH FLOOR

Drawing No.:
3205-A-GA-1020

