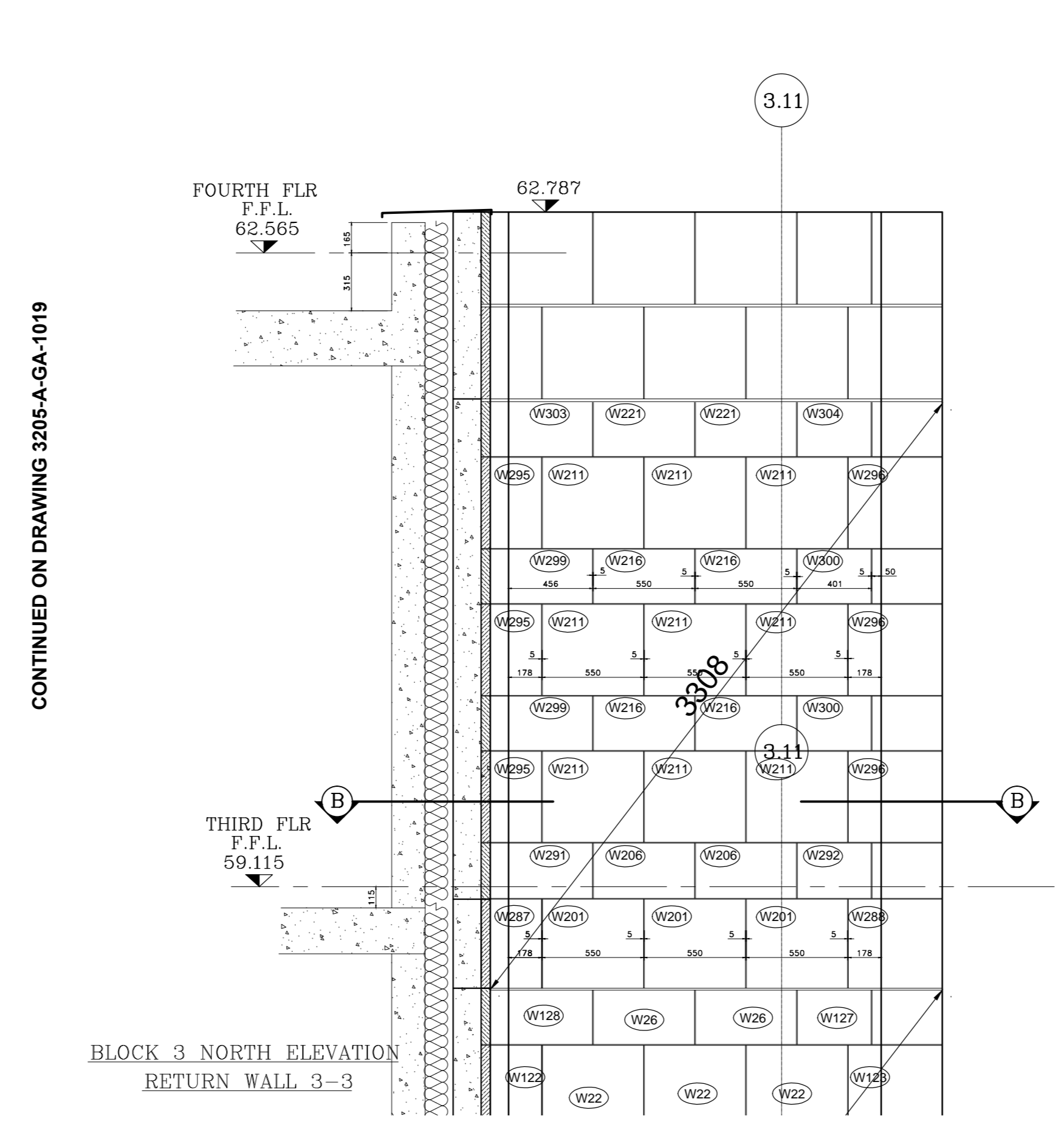


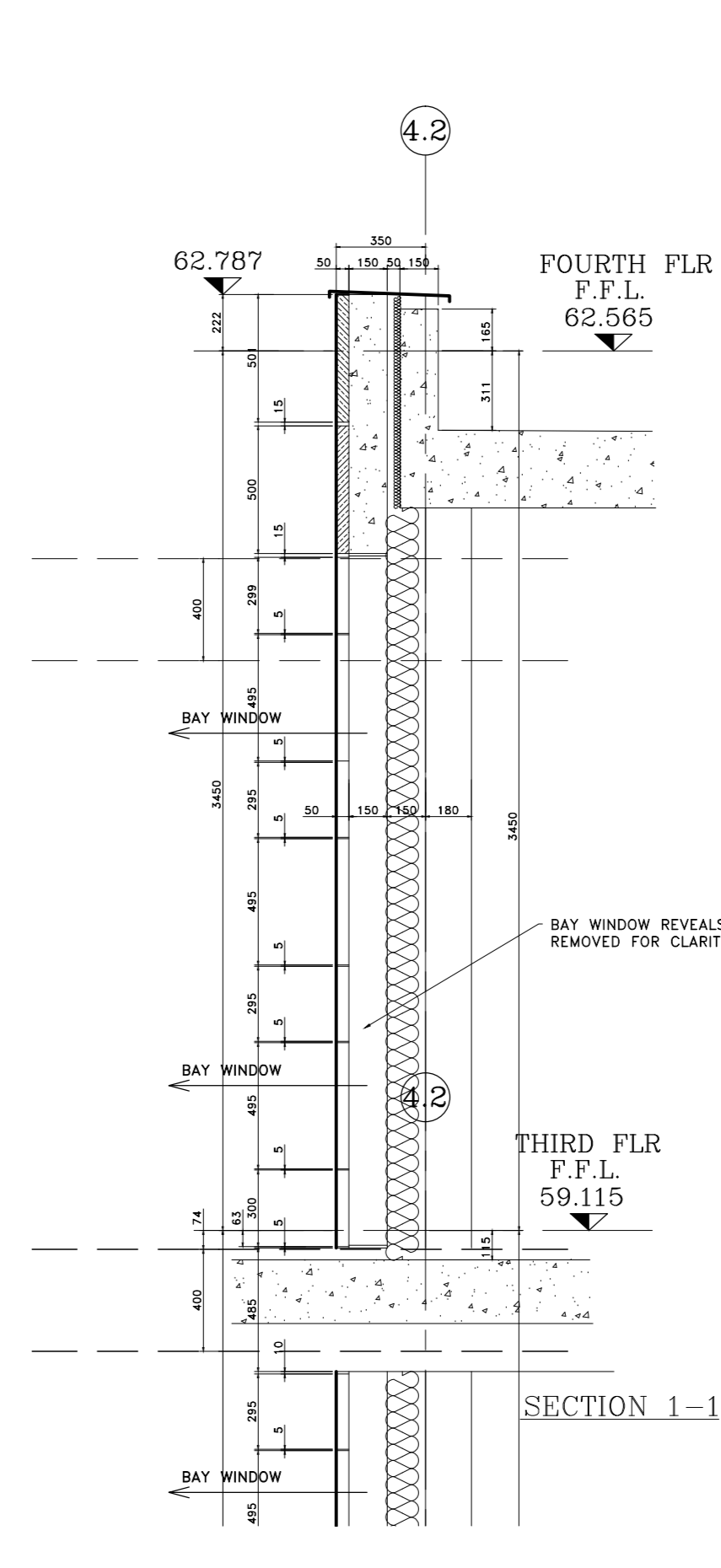
CONTINUED ON DRAWING 3205-A-GA-1017

CONTINUED ON DRAWING 3205-A-GA-10011

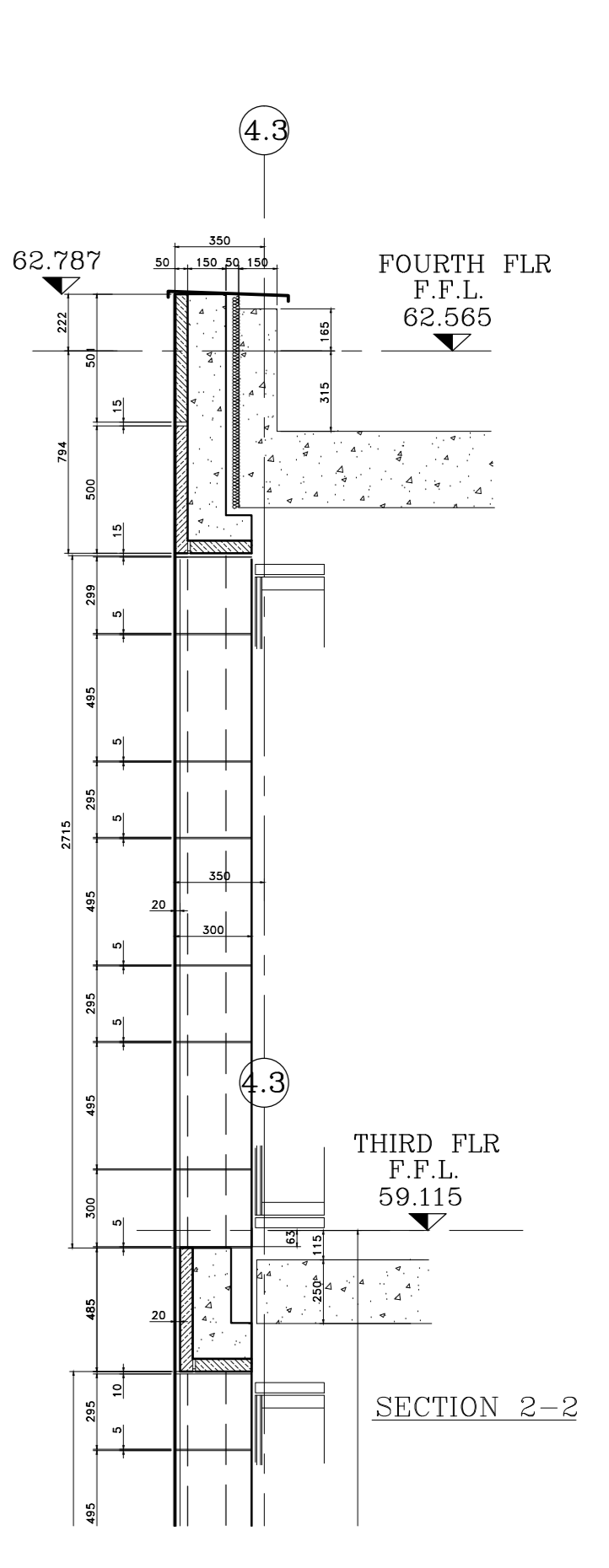


CONTINUED ON DRAWING 3205-A-GA-1019

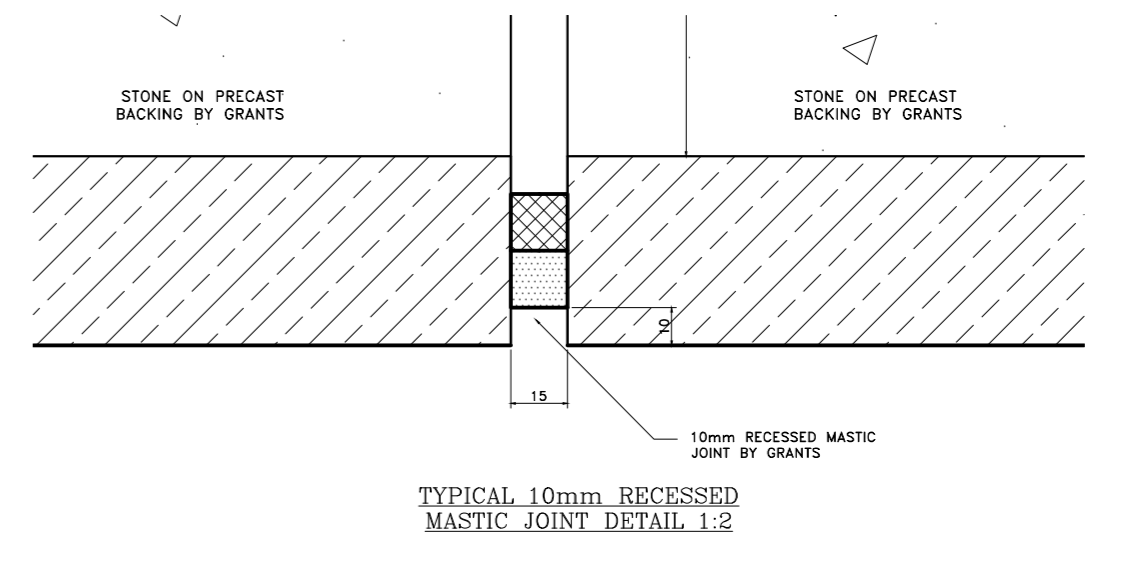
BLOCK 3 NORTH ELEVATION  
RETURN WALL 3-3



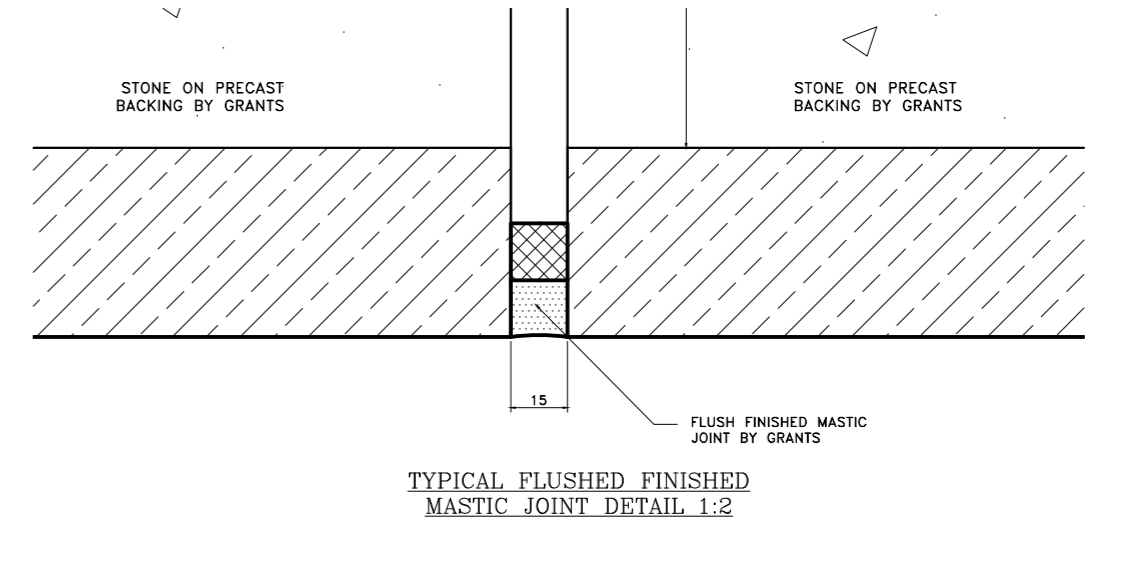
SECTION 1-1



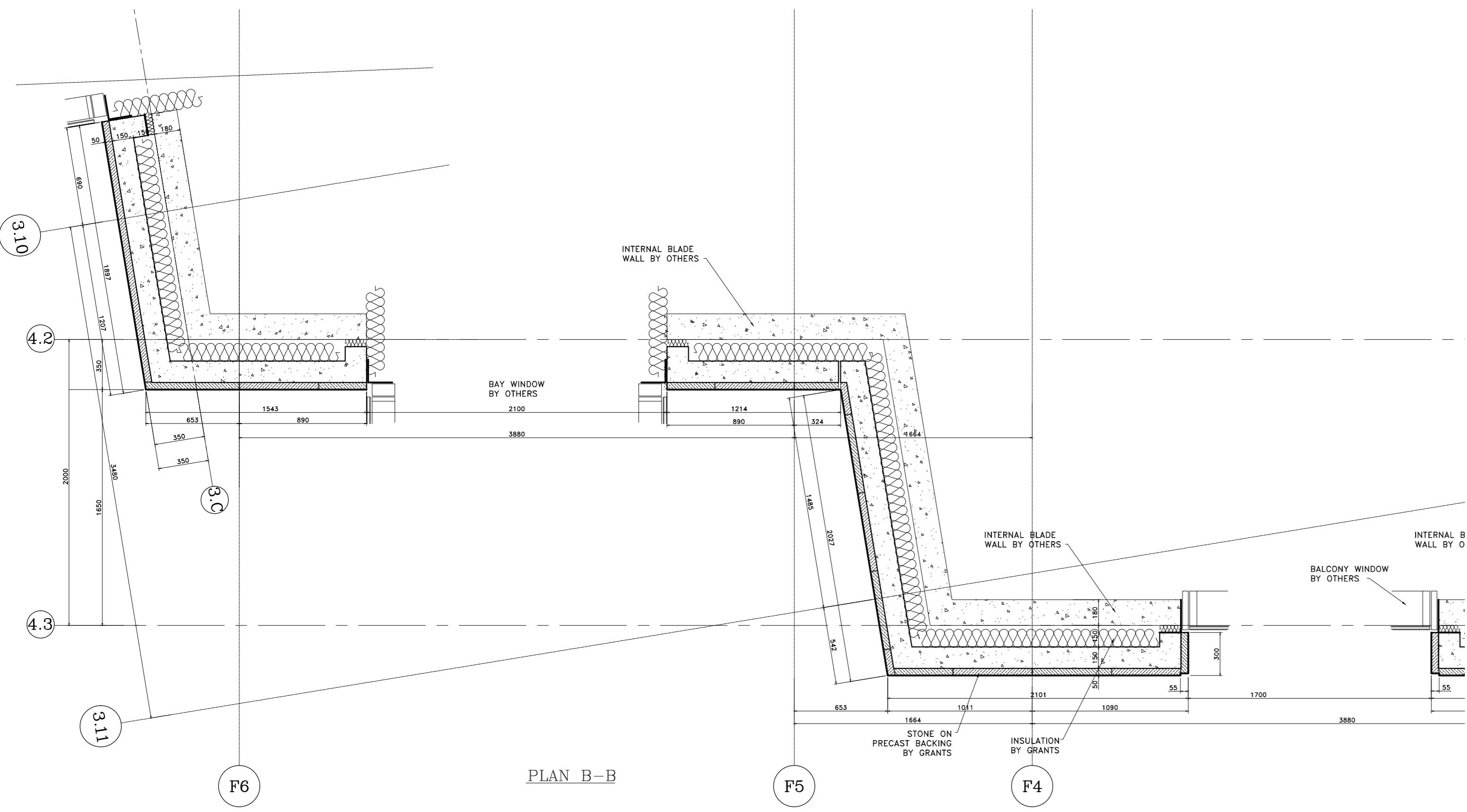
SECTION 2-2



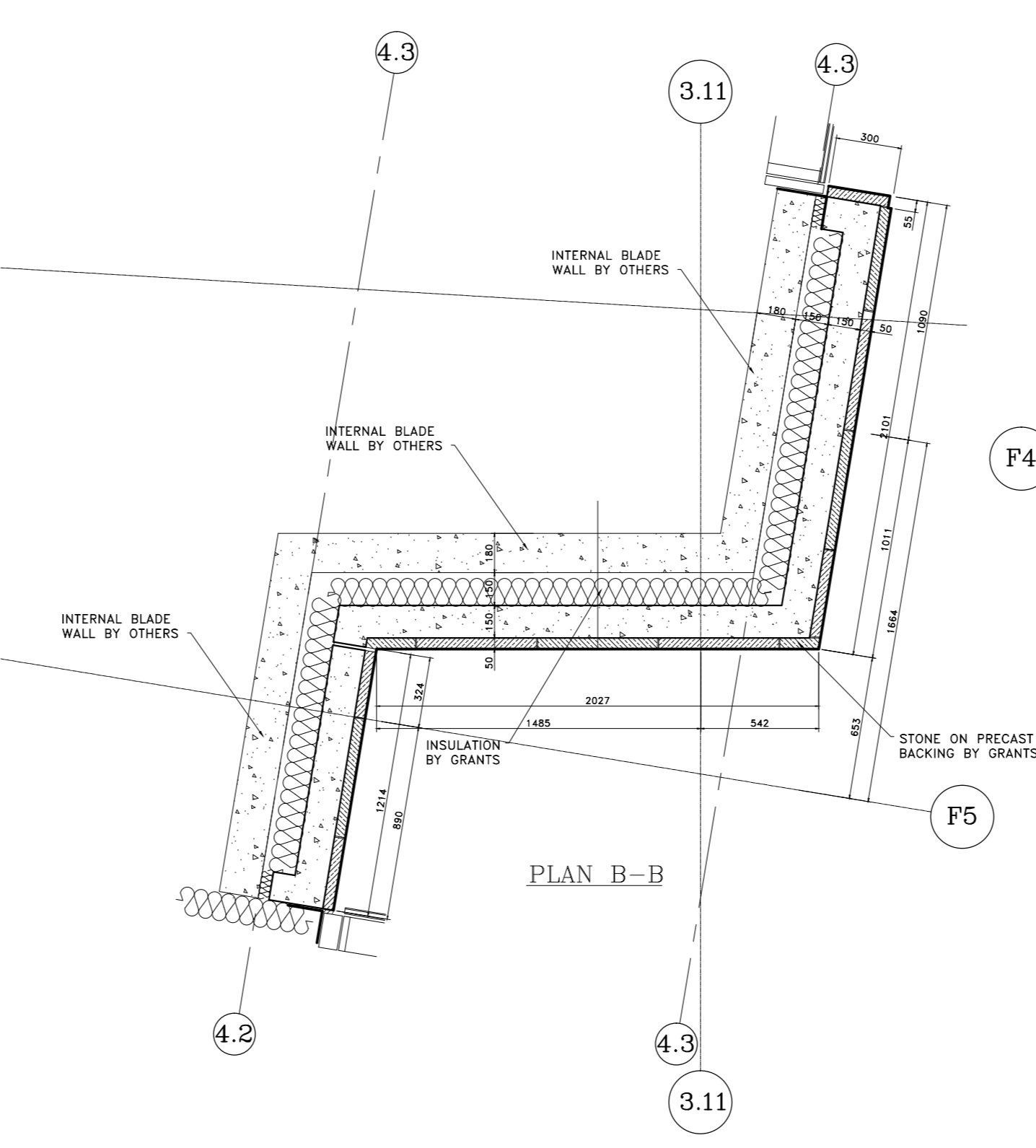
TYPICAL 10mm RECESSED  
MASTIC JOINT DETAIL 1-2



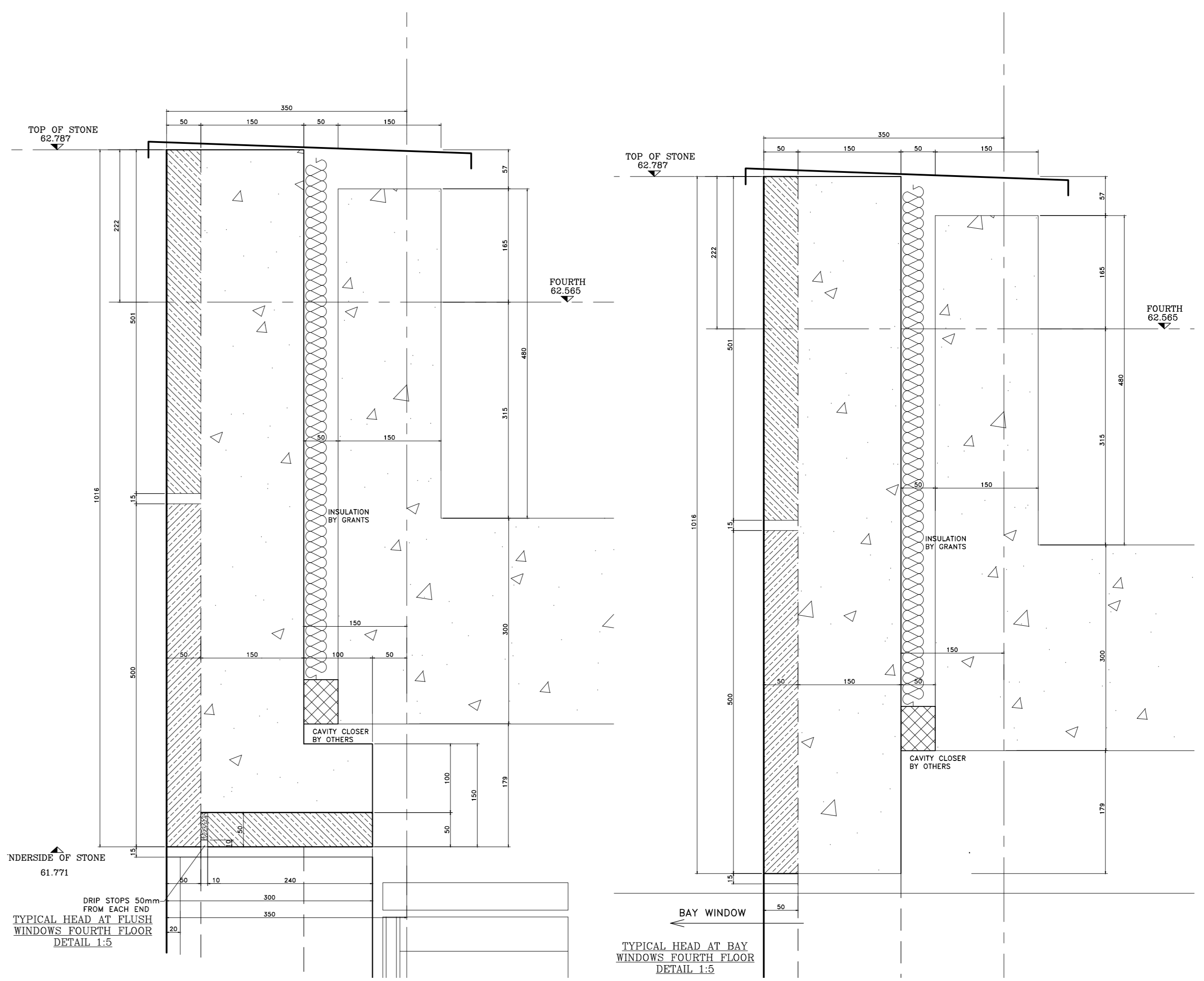
TYPICAL FLUSHED FINISHED  
MASTIC JOINT DETAIL 1-2



PLAN B-B

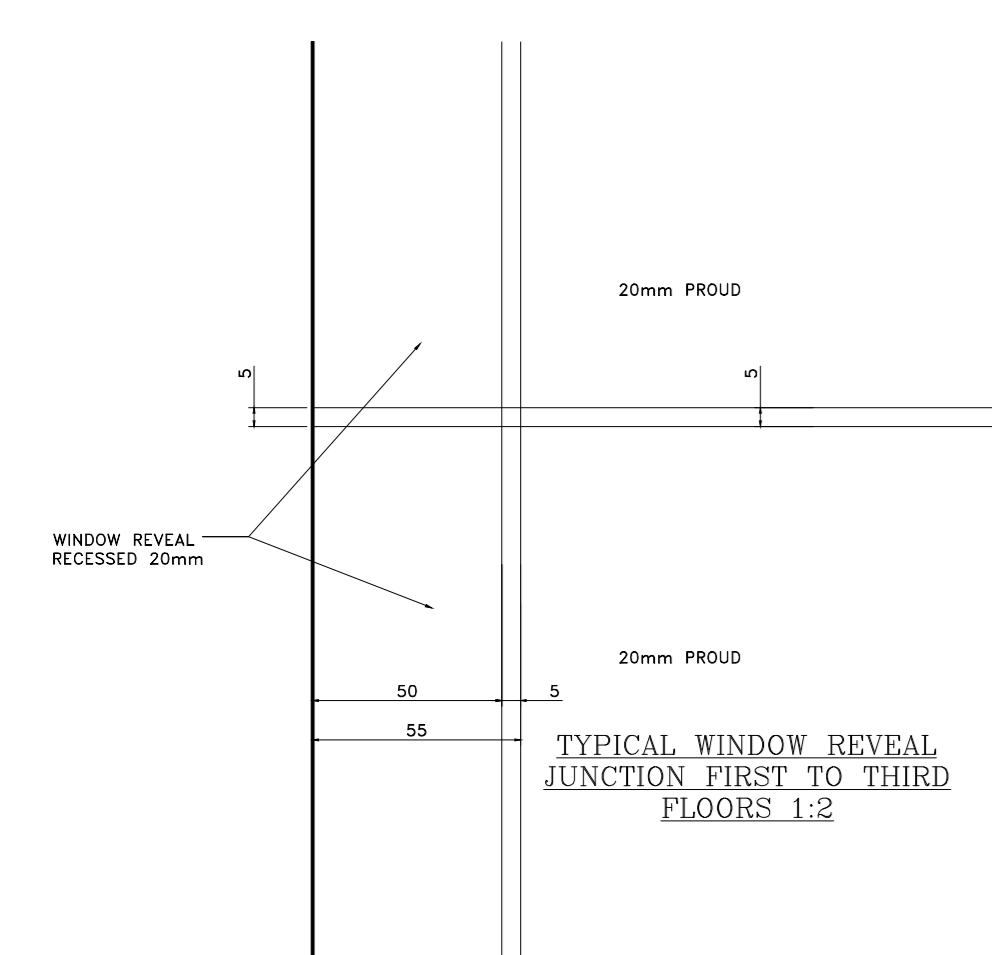


PLAN B-B

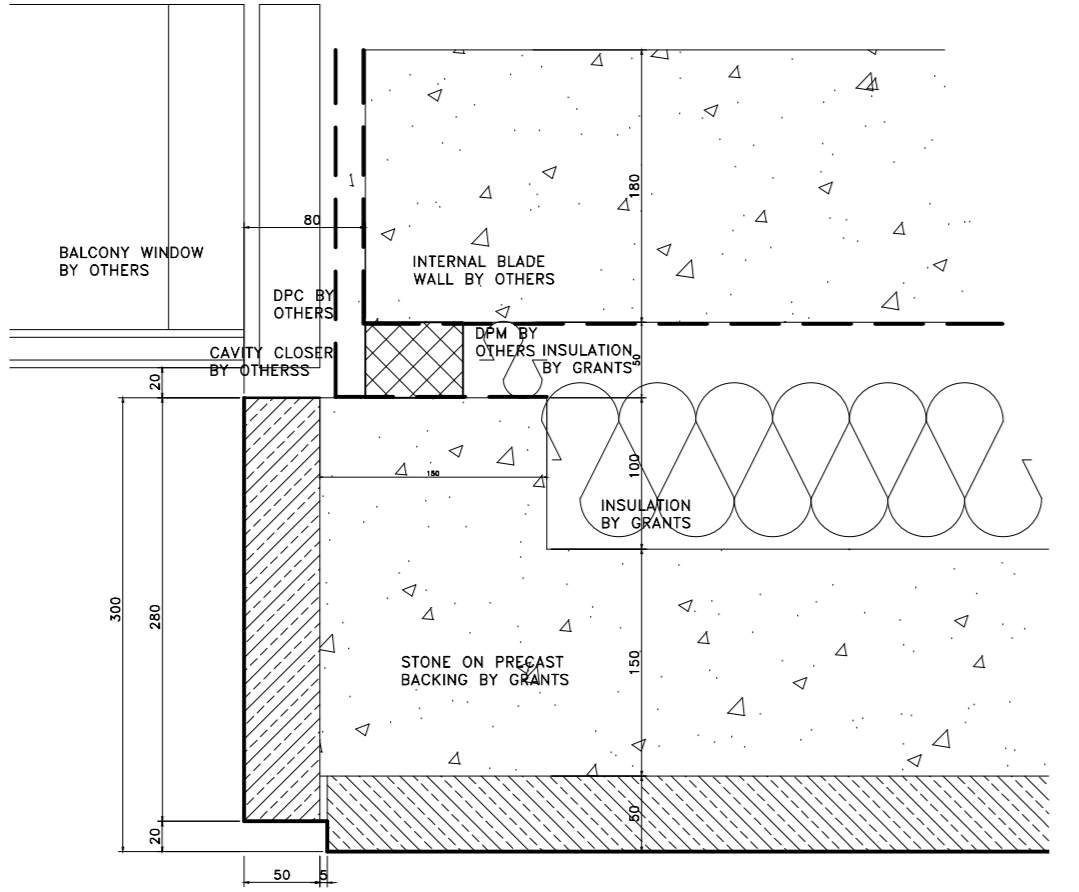


TYPICAL RECESSED HEAD AT  
FLUSH WINDOWS SECOND AND  
THIRD FLOORS DETAIL 1-5

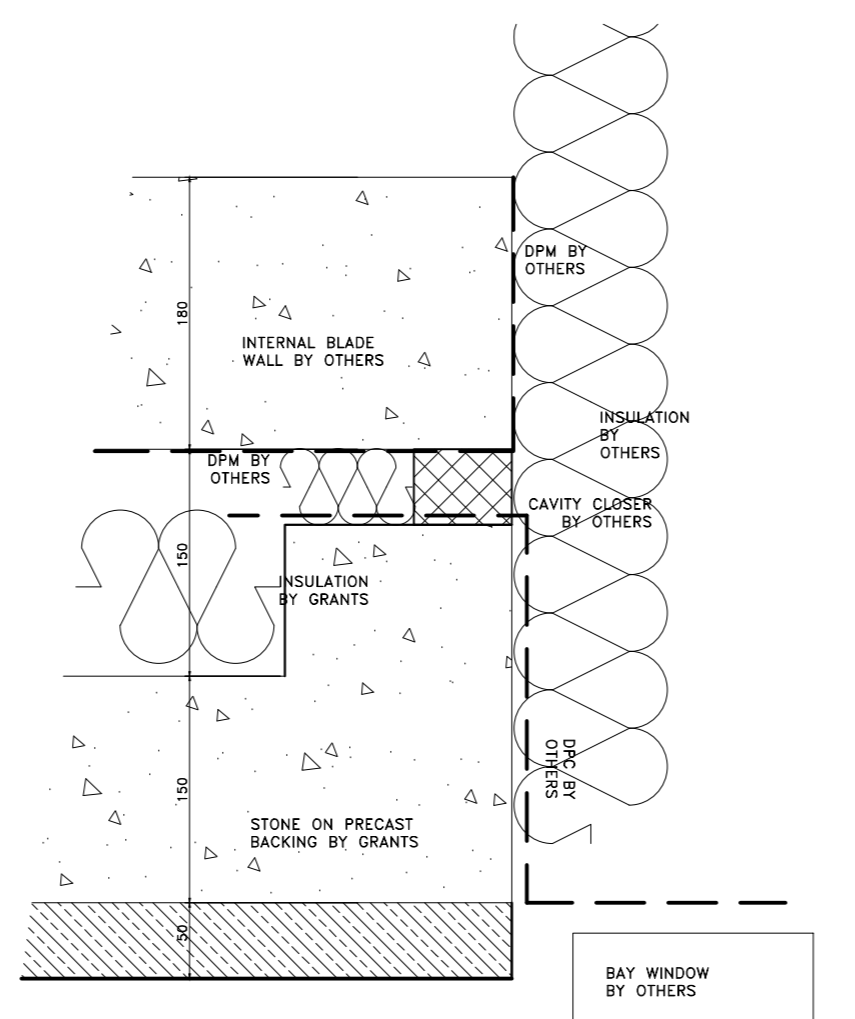
TYPICAL HEAD AT BAY  
WINDOWS FOURTH FLOOR  
DETAIL 1-5



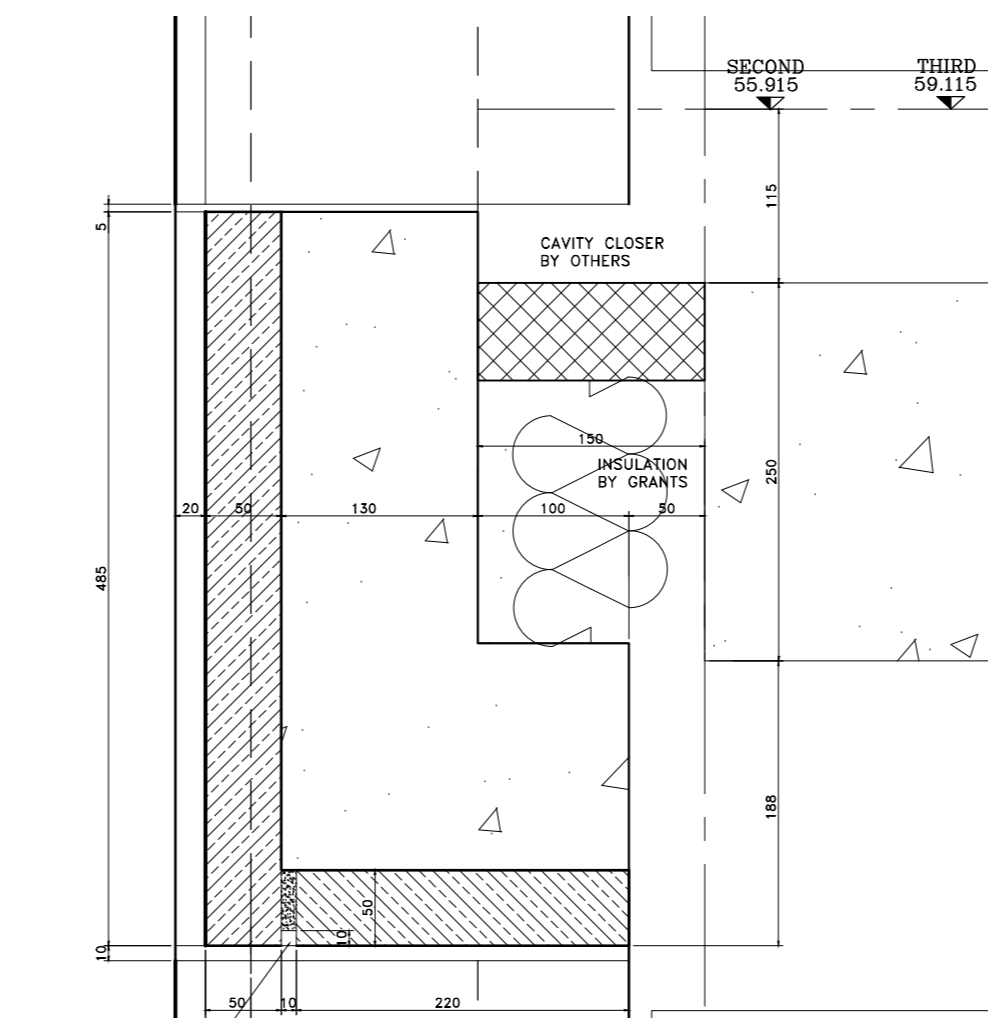
TYPICAL WINDOW REVEAL  
JUNCTION FIRST TO THIRD  
FLOORS 1-2



TYPICAL WINDOW REVEAL  
DETAIL FIRST TO FOURTH  
FLOORS 1-5



TYPICAL BAY WINDOW REVEAL  
DETAIL FIRST TO FOURTH  
FLOORS 1-5



TYPICAL RECESSED HEAD AT  
FLUSH WINDOWS SECOND AND  
THIRD FLOORS DETAIL 1-5

**Notes:**  
STONE TYPE TO RUSTICATED STONEMWORK TO BE PORTLAND BOWERS RICHMOND SAMPLE AND RANGE TO BE APPROVED.  
STONE TYPE TO NON RUSTICATED STONEMWORK TO BE PORTLAND FANCY BEACH WHITEB SAMPLE AND RANGE TO BE APPROVED.  
STONE TYPE TO PLINTH STONEMWORK TO BE GRANITE (SAMPLE TO BE APPROVED).  
STANDARD JOINTS TO BE 5mm FULLY POINTED TO APPROVED SAMPLE.  
ALL MASTIC JOINTS TO MATCH APPROVED SAMPLES.  
ALL FIXING RESTRAINTS TO BE STAINLESS STEEL GRADE 304 AND TO BE ISOLATED FROM THE MILD STEEL TO PREVENT BIMETALLIC REACTION.  
ALL STONES SHOULD HAVE NUMBERS MARKED ON UNSEEN FACES AND BE PREFIXED AS PER THE CUTTING SCHEDULES.  
INSULATION TO BE KINGSPAN TIVOS.  
ALL WATERPROOFING DPM BY OTHERS.

**CDM Regulations**  
Design Risk Assessment:  
The size and shape of individual stones for this project have been designed to satisfy the overall design requirements for the building. All persons handling and installing such stones should be aware that there are risks associated with this type of work that cannot be designed out.  
**RISK: INJURY**  
Risk Reduction:  
Persons must be suitably experienced in the handling of stones and employ lifting methods appropriate to the size and shape of that component. Access and platforms must be to the standard requiring by current legislation. Reference must always be made to COSHH information for the materials being used.

Rev.	Reason For Issue	Date
B	Stone and Panel references added.	27.06.13
A	Updated to Architects comments.	17.05.13

This drawing is the property of Grants and is to be used only by the contracted parties. Grants will not be held liable for any errors resulting through the use of this drawing by other parties. Do not scale drawings.

**GRANTS**  
INTERNATIONAL STONE CONTRACTORS

GRANTS OF SHOREDITCH LTD  
GRANTS HOUSE PROSPECT WAY  
HUTTON GREENWOOD  
ESSEX, CM13 1XD  
Tel: 01877 530100 Fax: 01877 531313  
E: grants@grantsstone.com

Project:  
**ST EDMUNDS TERRACE  
LONDON**

Architect:  
**SQUIRE AND PARTNERS**

Contractor:  
**MACE**

Drawing Title:  
**BLOCK 3  
NORTH ELEVATION LEFT HAND  
END THIRD TO FOURTH FLOORS**

Drawn By: **3/4** Checked By: **1:25@A0** Date: **11/04/13** Revision: **B**

Drawing No:  
**3205-A-GA-1018**