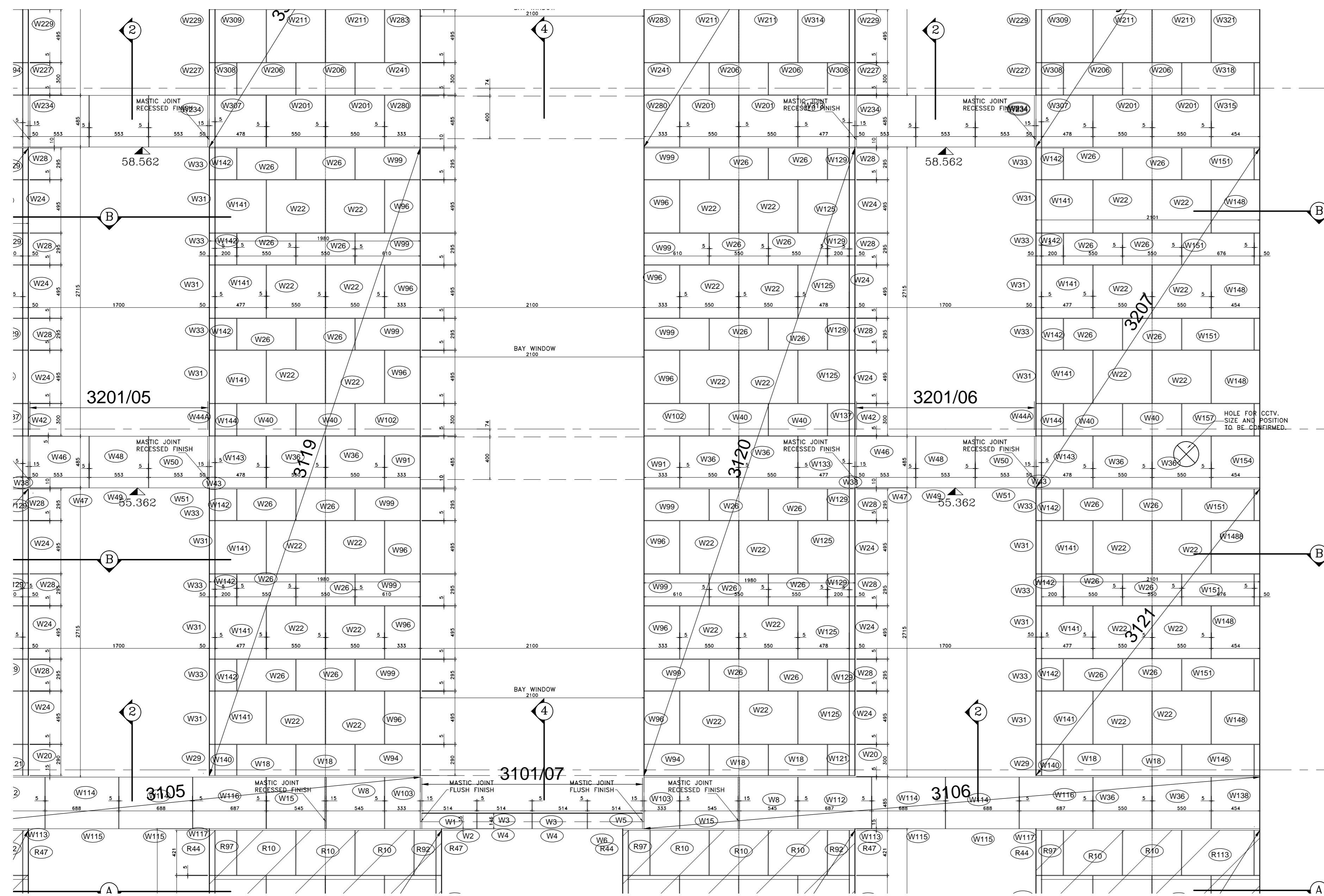


CONTINUED ON DRAWING 3205-A-GA-1011

CONTINUED ON DRAWING 3205-A-GA-1019

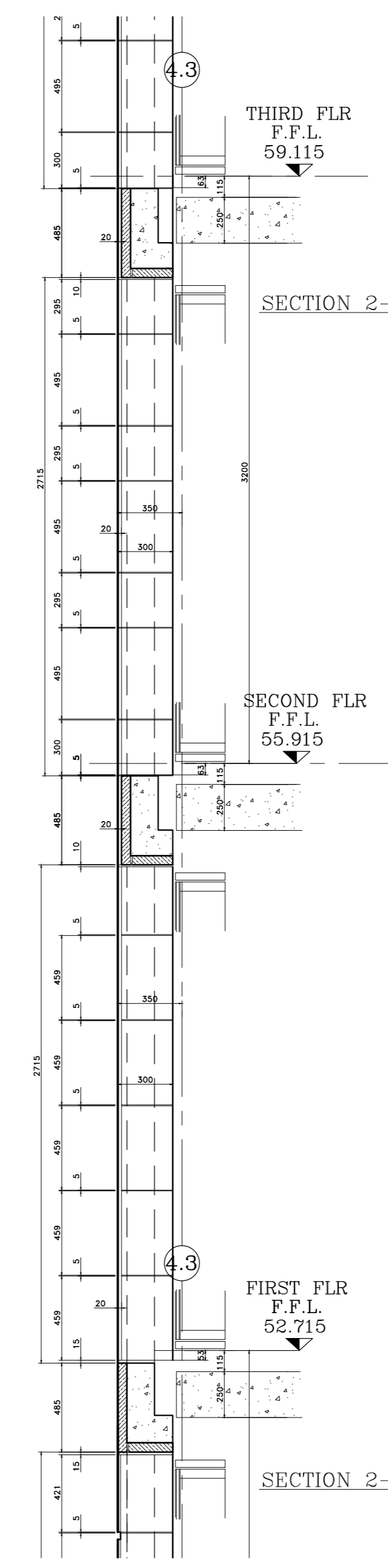


THIRD FLR
F.F.L.
59.115

SECOND FLR
F.F.L.
55.915

FIRST FLR
F.F.L.
52.715

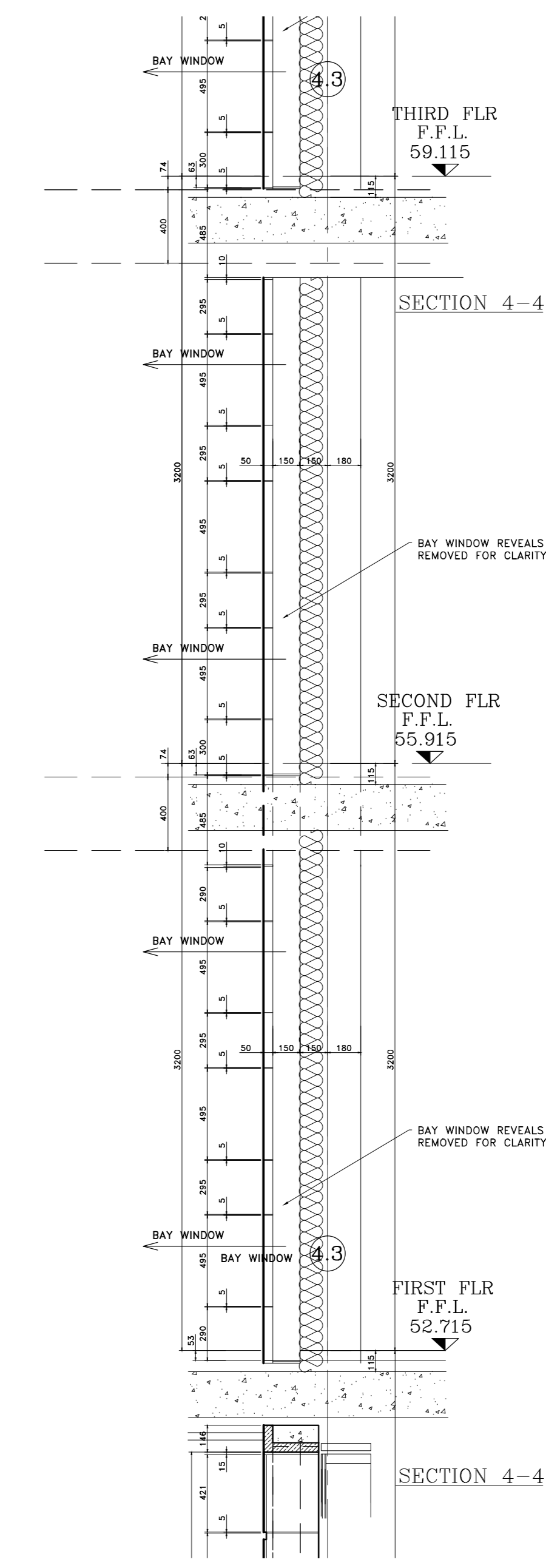
CONTINUED ON DRAWING 3205-A-GA-1013



THIRD FLR
F.F.L.
59.115

SECOND FLR
F.F.L.
55.915

FIRST FLR
F.F.L.
52.715

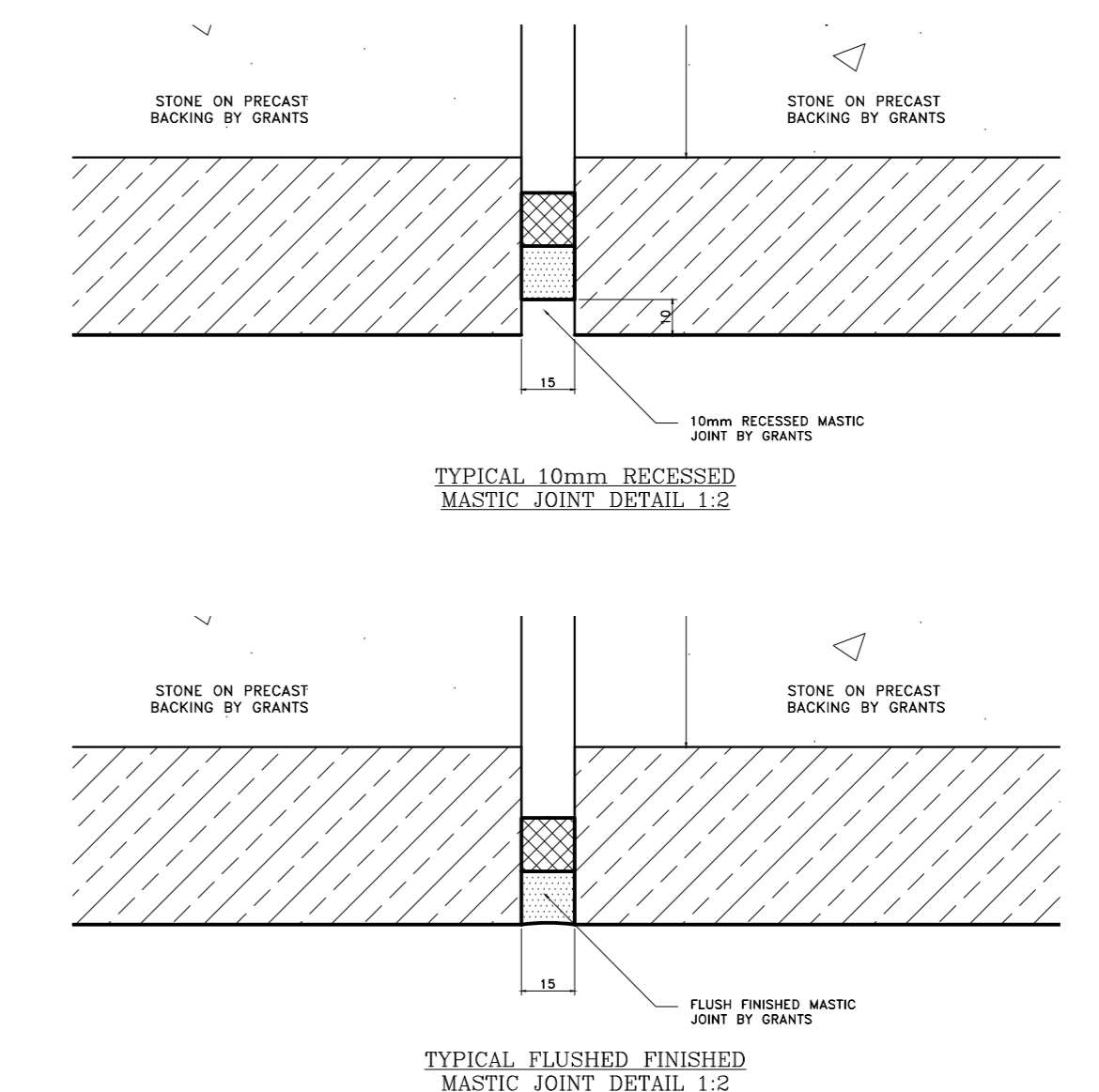
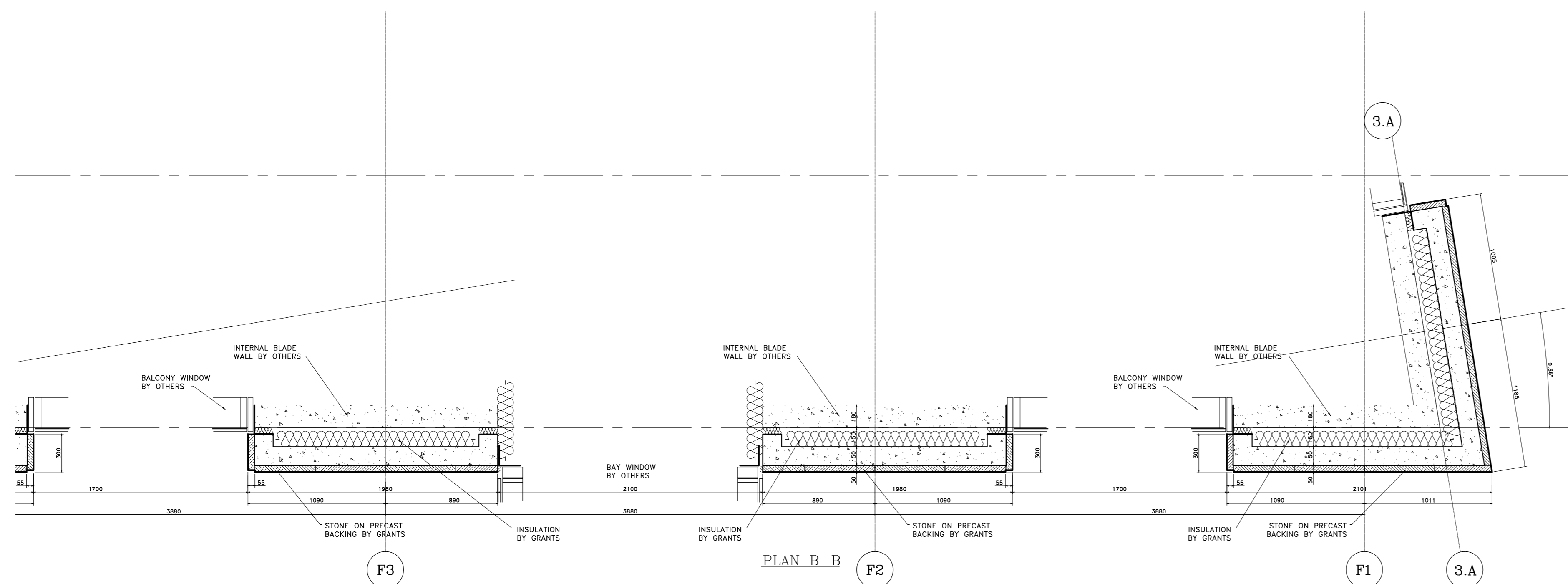


THIRD FLR
F.F.L.
59.115

SECOND FLR
F.F.L.
55.915

FIRST FLR
F.F.L.
52.715

CONTINUED ON DRAWING 3205-A-GA-1005



Notes:

- STONE TYPE TO RUSTICATED STONEMARK TO BE PORTLAND BOWERS ROACH SAMPLE AND RANGE TO BE APPROVED.
- STONE TYPE TO NON-RUSTICATED STONEMARK TO BE PORTLAND FANCY BEACH WHITBED SAMPLE AND RANGE TO BE APPROVED.
- STONE TYPE TO PLINTH STONEMARK TO BE GRANITE (SAMPLE TO BE APPROVED).
- STANDARD JOINTS TO BE 5mm FULLY POINTED TO APPROVED SAMPLE.
- ALL MASTIC JOINTS TO MATCH APPROVED SAMPLES.
- ALL FIXING RESTRAINTS TO BE STAINLESS STEEL GRADE 304 AND TO BE ISOLATED FROM THE MILD STEEL TO PREVENT BIMETALLIC REACTION.
- ALL STONES SHOULD HAVE NUMBERS MARKED ON UNSEEN FACES AND BE PROVIDED AS PER THE CUTTING SCHEDULES.
- INSULATION TO BE KINGSPAN TWISS.
- ALL WATERPROOFING DPM BY OTHERS.

CDM Regulations
Design Risk Assessment:

The size and shape of individual stones for this project have been designed to satisfy the overall design requirements for the building. All persons handling and installing such stones should be aware that there are risks associated with this type of work that cannot be designed out.

RSK: INJURY
Risk Reduction:
Fixers must be suitably experienced in the handling of stones and employ lifting methods appropriate to the size and shape of that component. Access and platforms must be to the standard required by current legislation.
References must always be made to COSHH information for the materials being used.

B	Stone and Panel references added.	20.06.13
A	Updated to Architects comments	14.05.13
Rev.	Reason For Issue	Date

This drawing is the property of Grants and is to be used only for the contracted project. It is not to be used for any other project without the written consent of Grants. Grants are not responsible for any errors occurring through the use of this drawing by other parties. Do not scale drawings.

GRANTS
GRANTS OF SHOREDITCH LTD
GRANTS HOUSE, PROSPECT WAY
NUTLEY, BRENTWOOD
ESSEX, CM13 1XD
Tel: 0206 770000 Fax: 0206 7701000
E: info@grants.co.uk

Project:
**ST EDMUNDS TERRACE
LONDON**

Architect:
SQUIRE AND PARTNERS

Contractor:
MACE

Drawing Title:
**BLOCK 3
NORTH ELEVATION RIGHT HAND END
FIRST TO THIRD FLOORS**

Drawn By: **SM** Checked By: **SC** Scale: **1:25 @ A0** Date: **11/04/13** Revision: **B**

Drawing No:
3205-A-GA-1012

