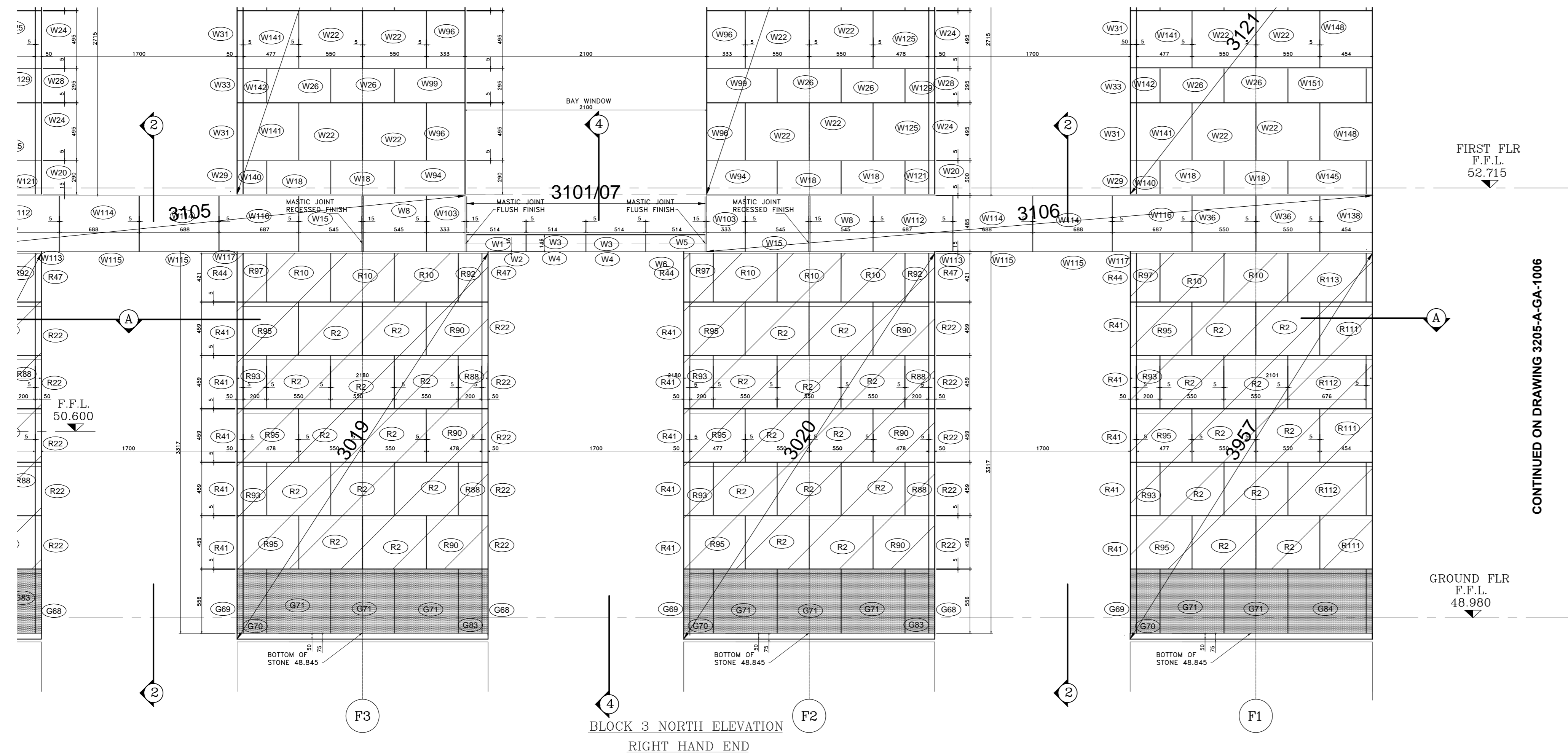
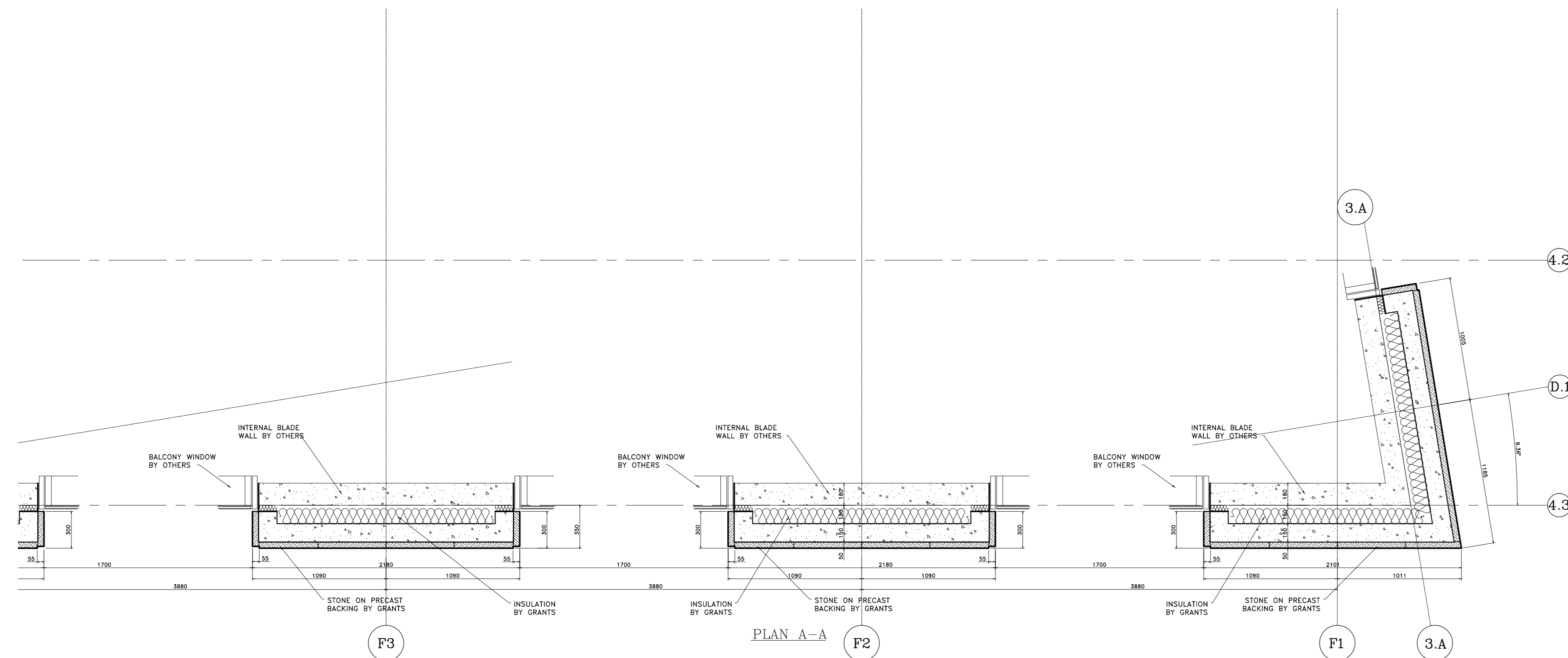
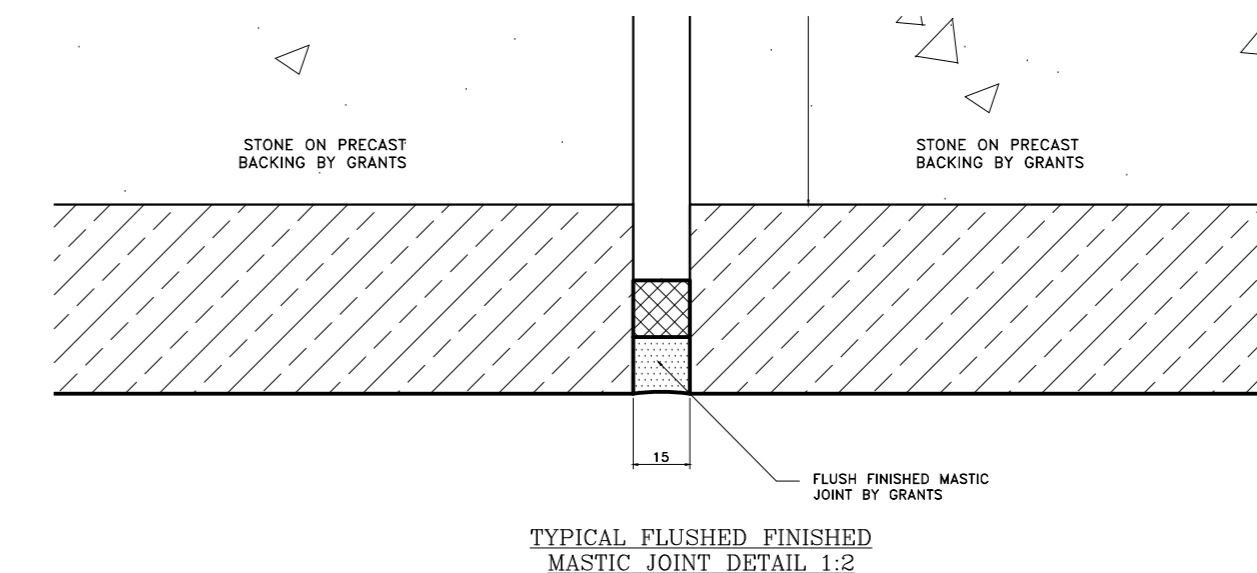
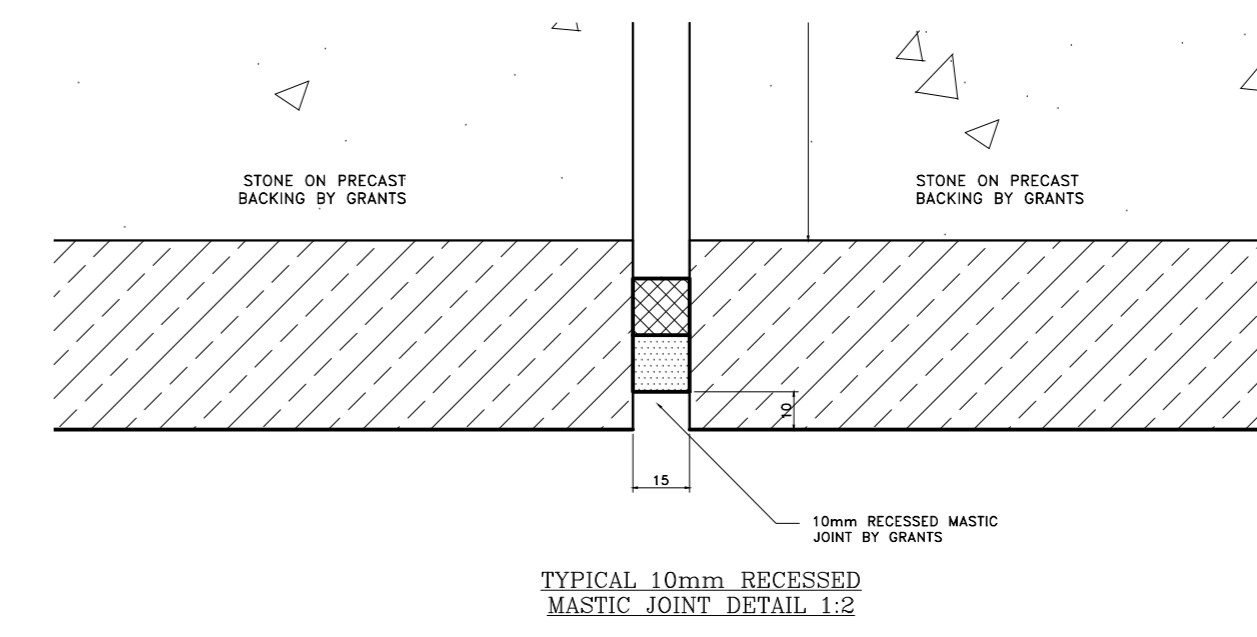
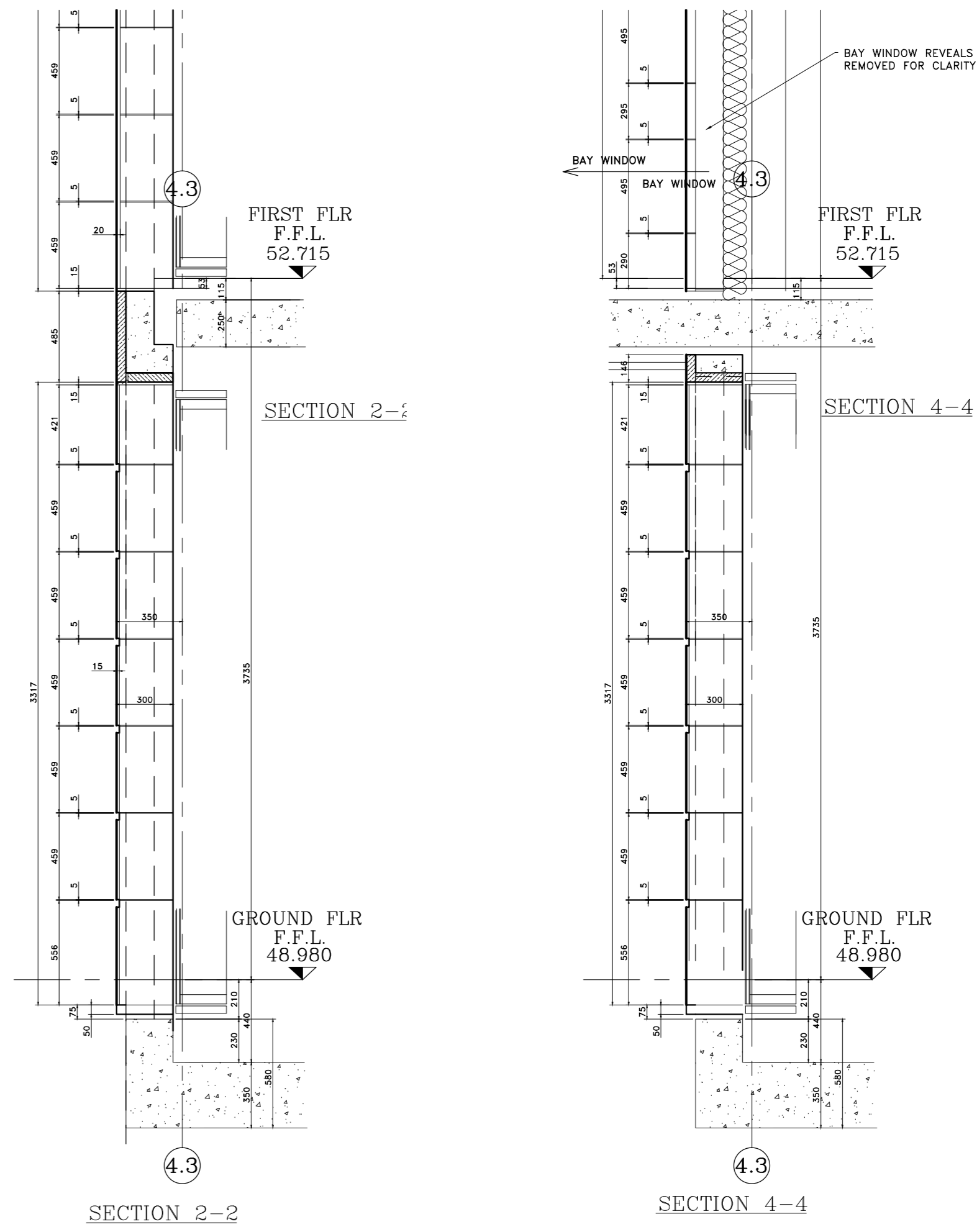


CONTINUED ON DRAWING 3205-A-GA-1004

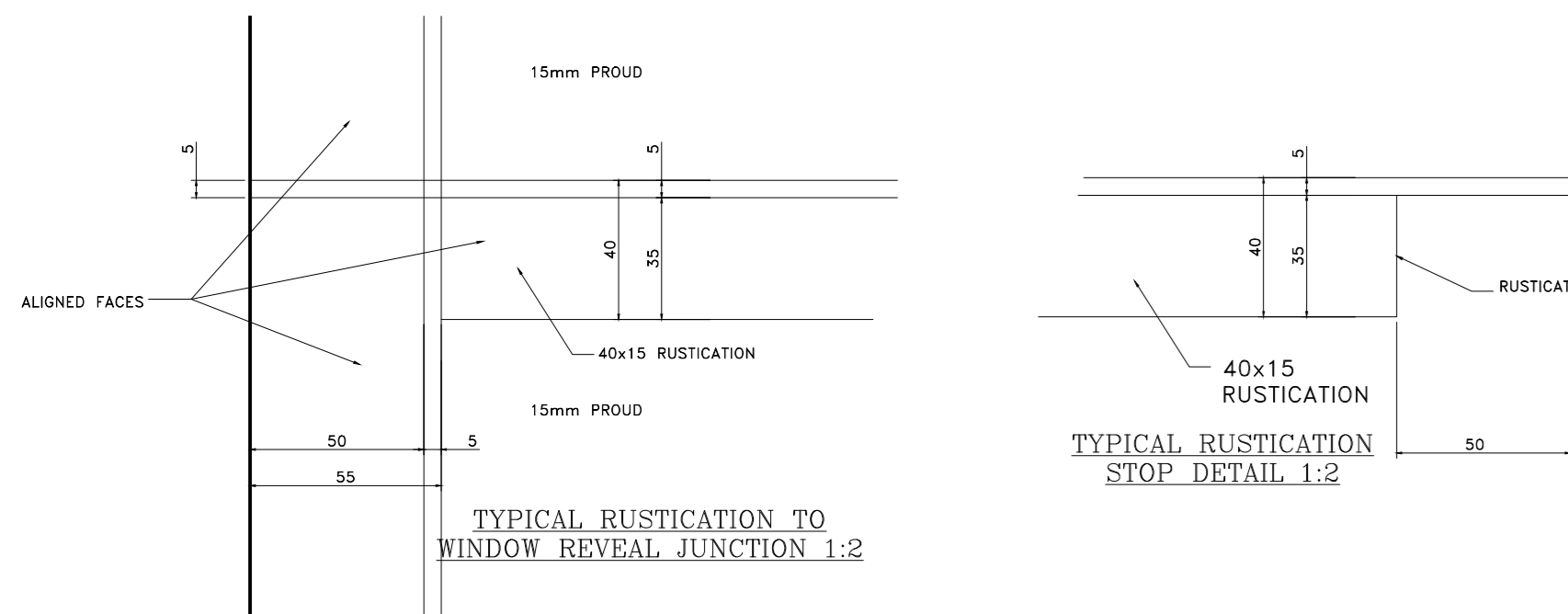
CONTINUED ON DRAWING 3205-A-GA-1006



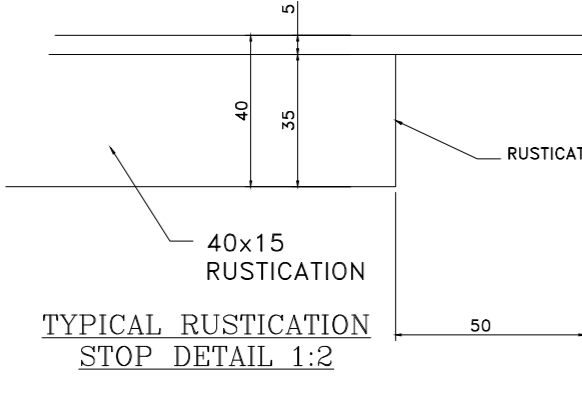
BLOCK 3 NORTH ELEVATION  
RIGHT HAND END



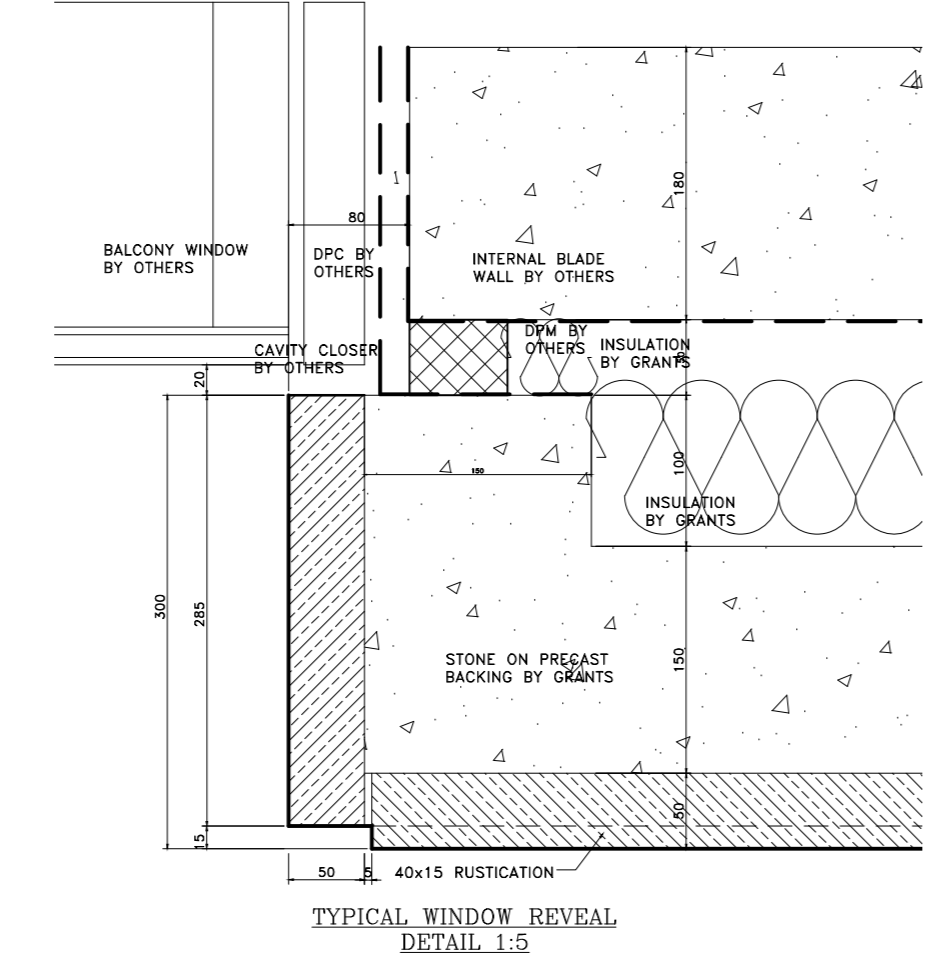
PLAN A-A



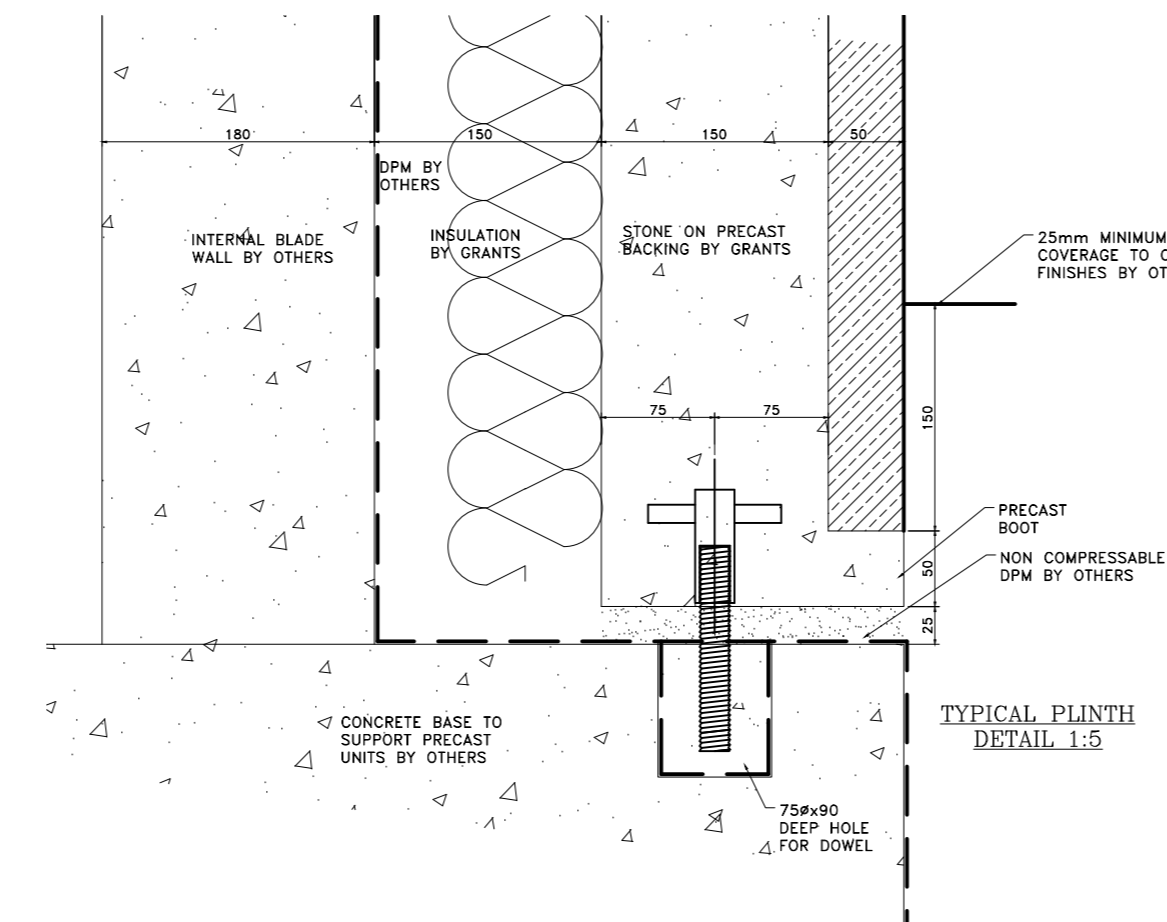
TYPICAL RUSTICATION TO WINDOW REVEAL JUNCTION 1.2



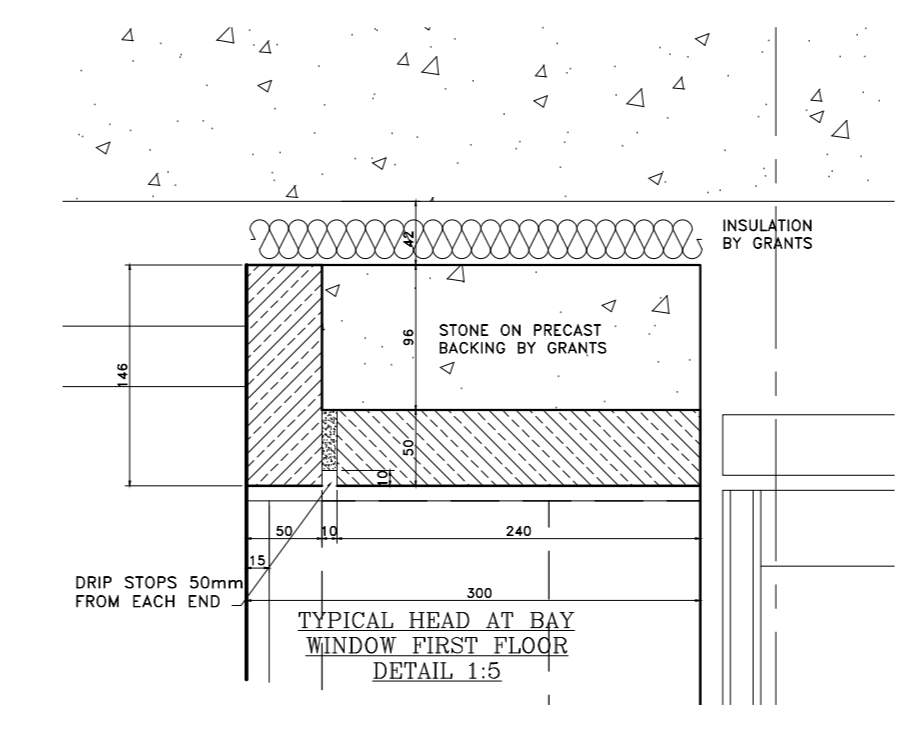
TYPICAL RUSTICATION STOP DETAIL 1.2



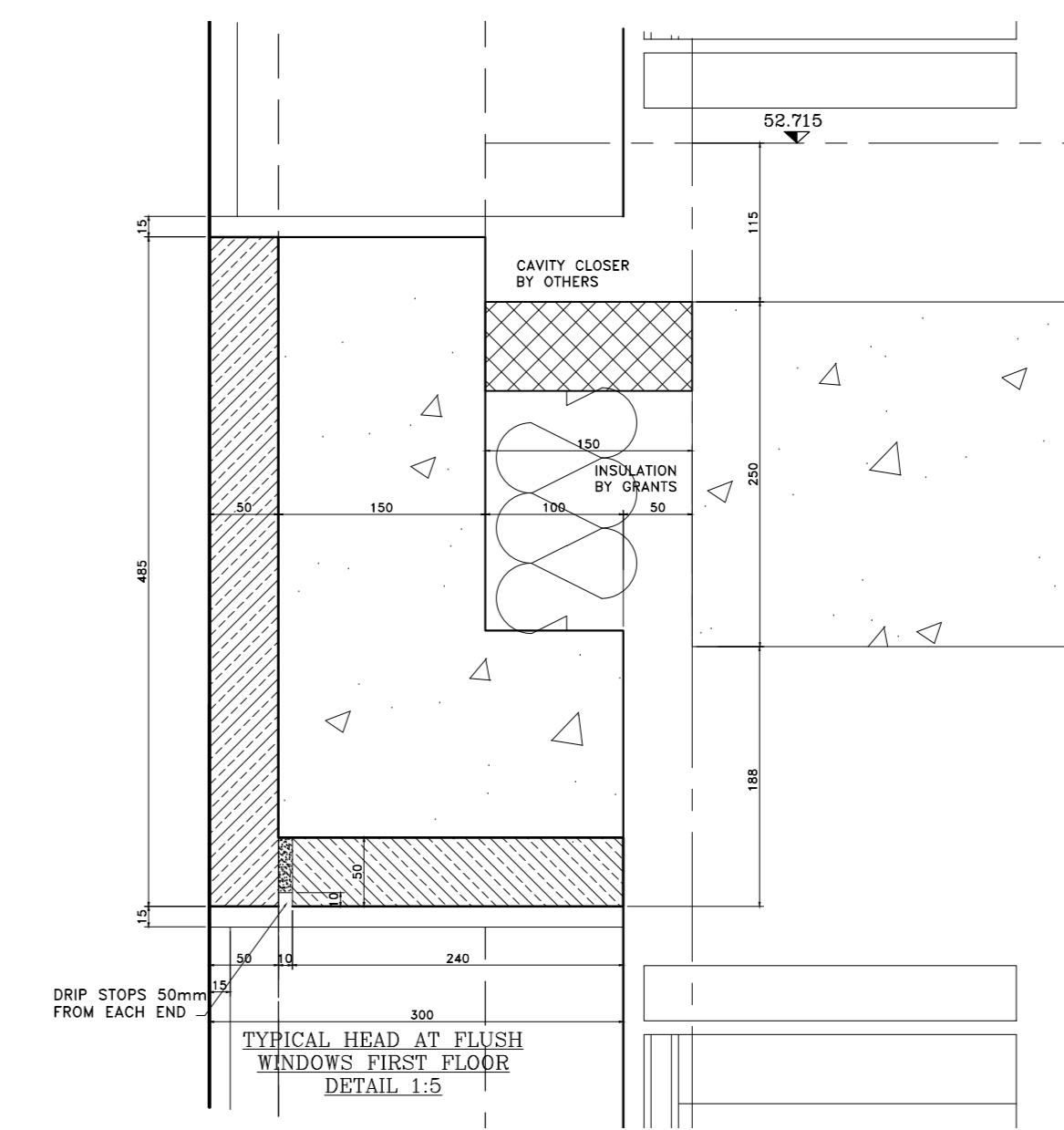
TYPICAL WINDOW REVEAL DETAIL 1.5



TYPICAL PLINTH DETAIL 1.5



TYPICAL HEAD AT BAY WINDOW FIRST FLOOR DETAIL 1.5



TYPICAL HEAD AT FLUSH WINDOWS FIRST FLOOR DETAIL 1.5

**Notes:**  
 STONE TYPE TO RUSTICATED STONEMWORK TO BE PORTLAND BOWERS ROACH SAMPLE AND RANGE TO BE APPROVED.  
 STONE TYPE TO NON RUSTICATED STONEMWORK TO BE PORTLAND FANCY BEACH WHITEB SAMPLE AND RANGE TO BE APPROVED.  
 STONE TYPE TO PLINTH STONEMWORK TO BE GRANITE (SAMPLE TO BE APPROVED).  
 STANDARD JOINTS TO BE 6mm FULLY POINTED TO APPROVED SAMPLE.  
 ALL MASTIC JOINTS TO MATCH APPROVED SAMPLES.  
 ALL FIXING RESTRAINTS TO BE STAINLESS STEEL GRADE 304 AND TO BE ISOLATED FROM THE MILD STEEL TO PREVENT BIMETALLIC REACTION.  
 ALL STONES SHOULD HAVE NUMBERS MARKED ON UNSEEN FACES AND BE PROVIDED AS PER THE CUTTING SCHEDULES.  
 INSULATION TO BE KINGSPAN TWISS.  
 ALL WATERPROOFING DPM BY OTHERS.

CDM Regulations  
 Design Risk Assessment:  
 The size and shape of individual stones for this project have been designed to satisfy the overall design requirements for the building. All persons handling and installing such stones should be aware that there are risks associated with this type of work that cannot be designed out.  
 RISK: INJURY  
 Risk Reduction:  
 Fixers must be suitably experienced in the handling of stones and employ lifting methods appropriate to the size and shape of that component. Access and platforms must be to the standard required by current legislation.  
 References must always be made to COSSH information for the materials being used.

C	STONE AND PANEL NUMBERS ADDED	06/06/13
B	Updated to Architects comments	17.04.13
A	Updated to Architects comments	27.03.13
Rev:	Reason For Issue	Date

GRANTS OF SHOREDITCH LTD  
 GRANTS HOUSE, PROSPECT WAY  
 HATFIELD, BRENTWOOD  
 ESSEX, CM13 1XD  
 0206 7750000 Fax 020 703 0000  
 E: info@grants.co.uk

Project:  
**ST EDMUNDS TERRACE LONDON**  
 Architect:  
**SQUIRE AND PARTNERS**  
 Contractor:  
**MACE**  
 Drawing Title:  
**BLOCK 3 NORTH ELEVATION RIGHT HAND END GROUND TO FIRST FLOOR**  
 Drawn By: **AM** Checked By: **SC** Scale: **1:25 @ A0** Date: **13/03/13** Revision: **C**  
 Drawing No.: **3205-A-GA-1005**