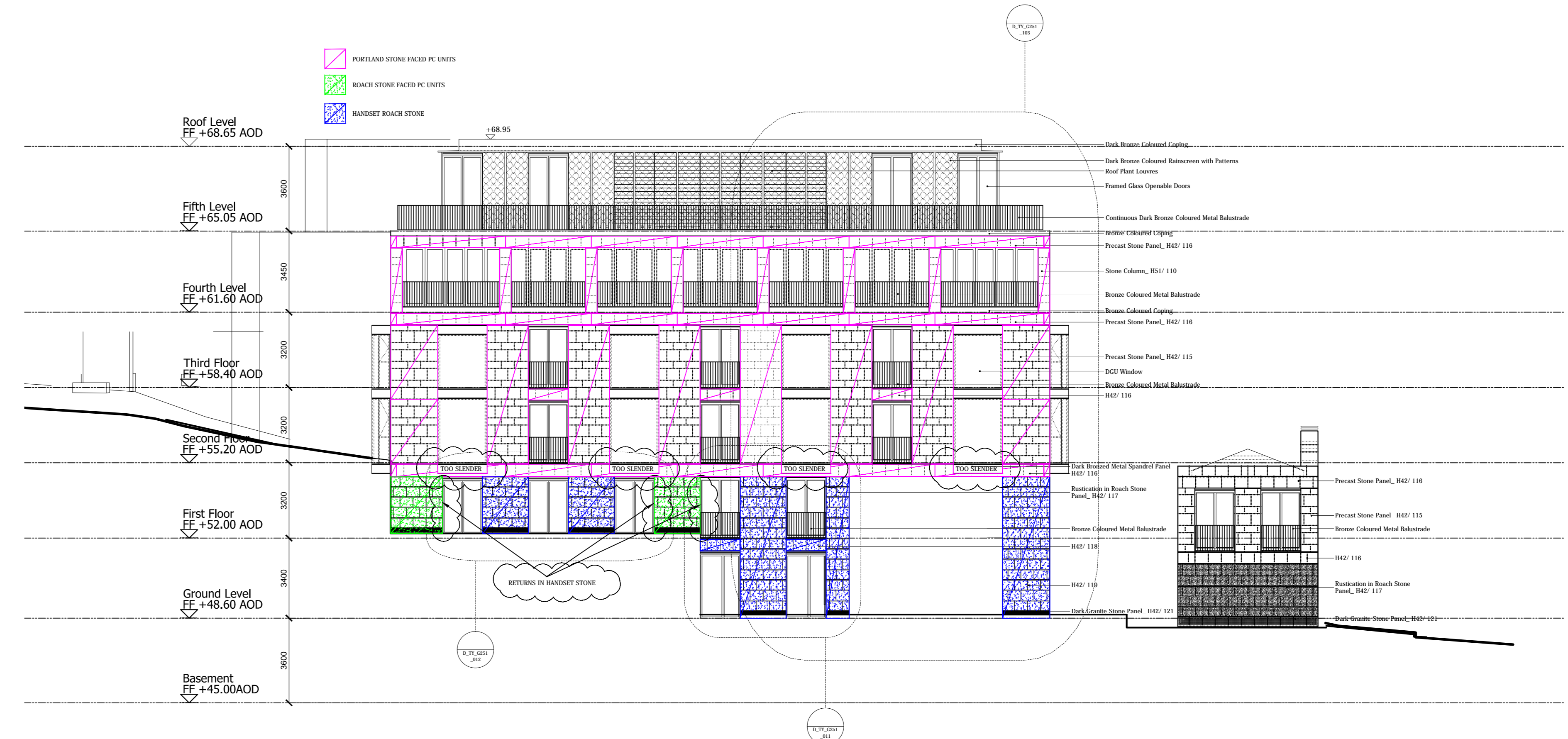
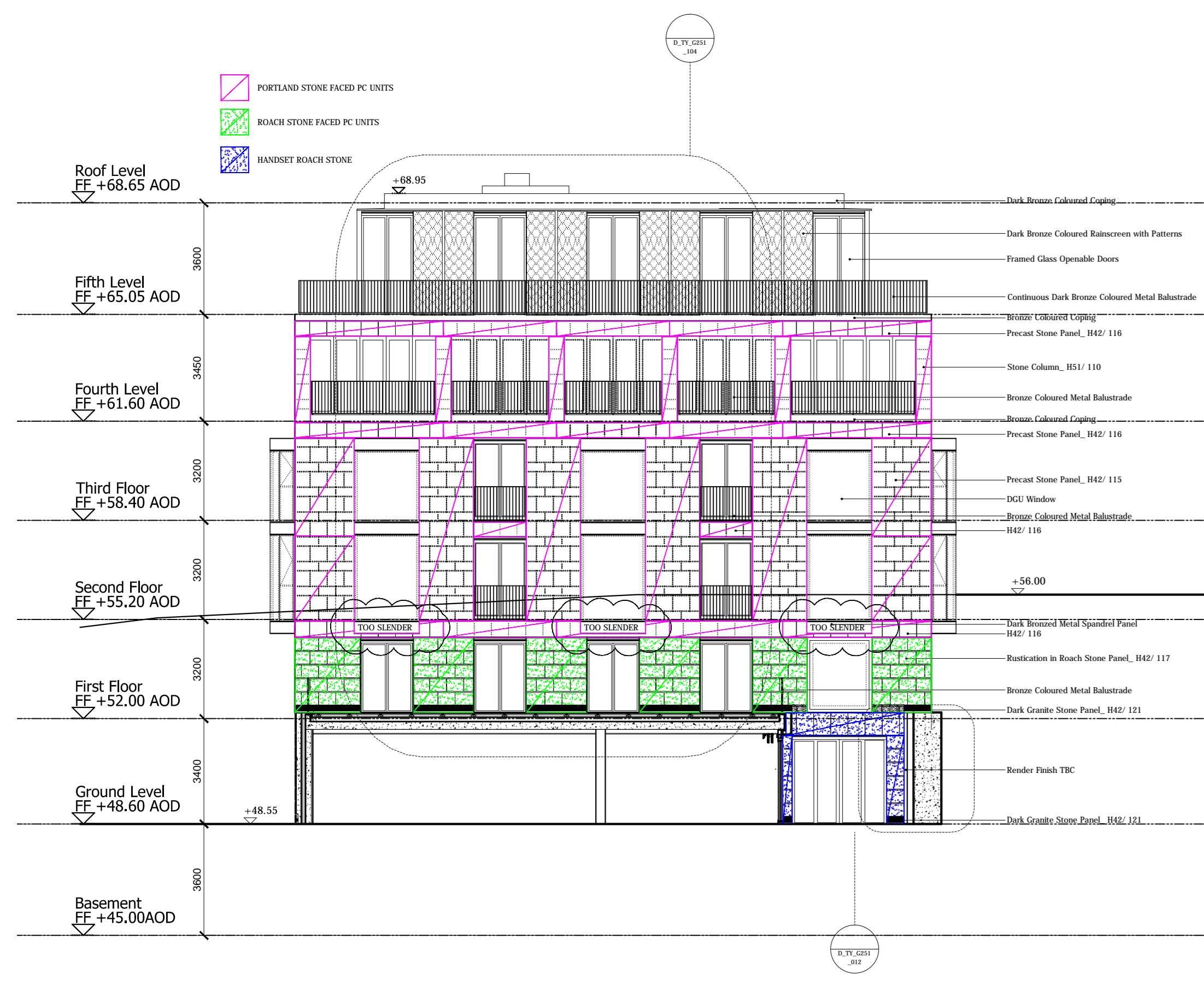




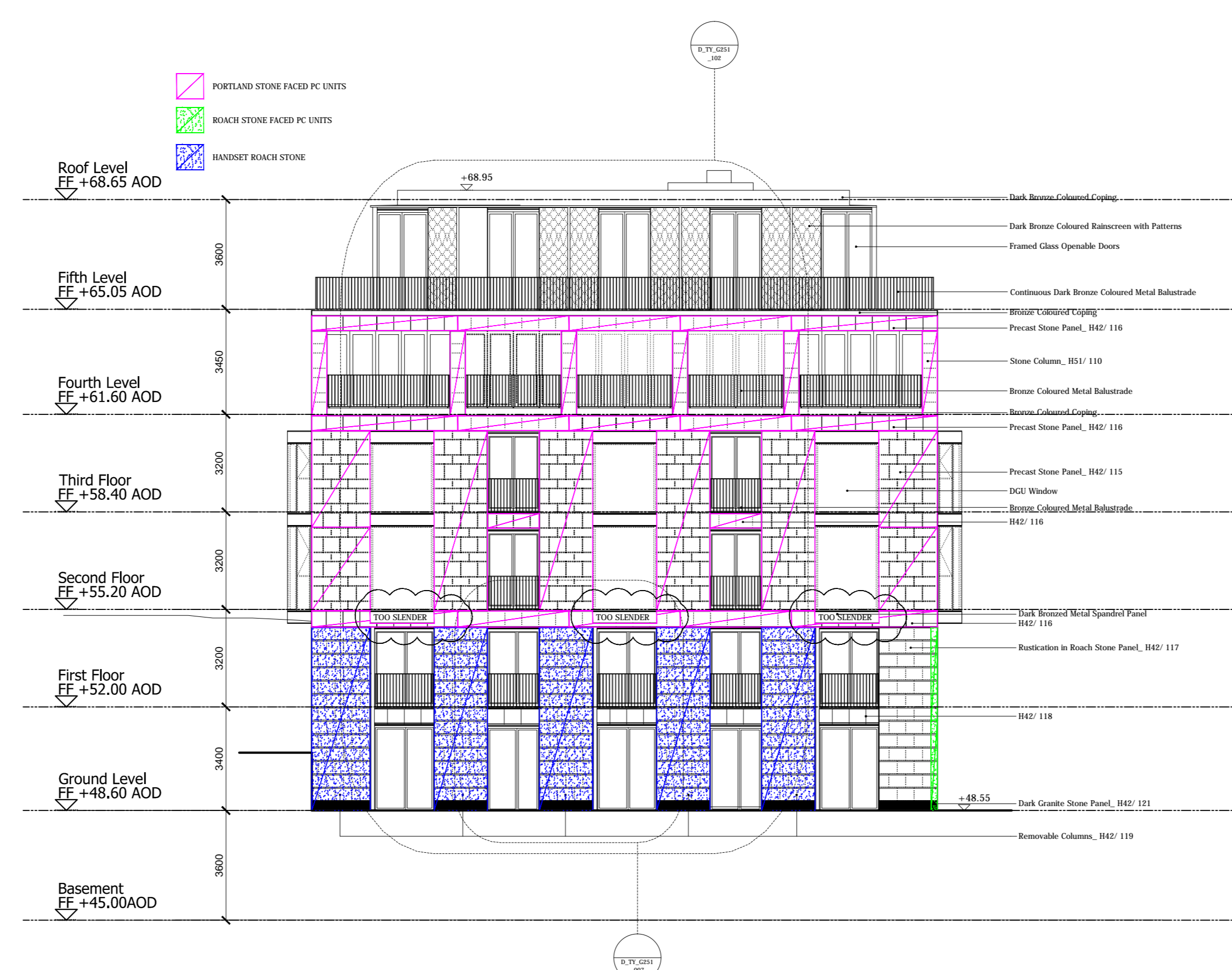
BLOCK 1 - East Elevation



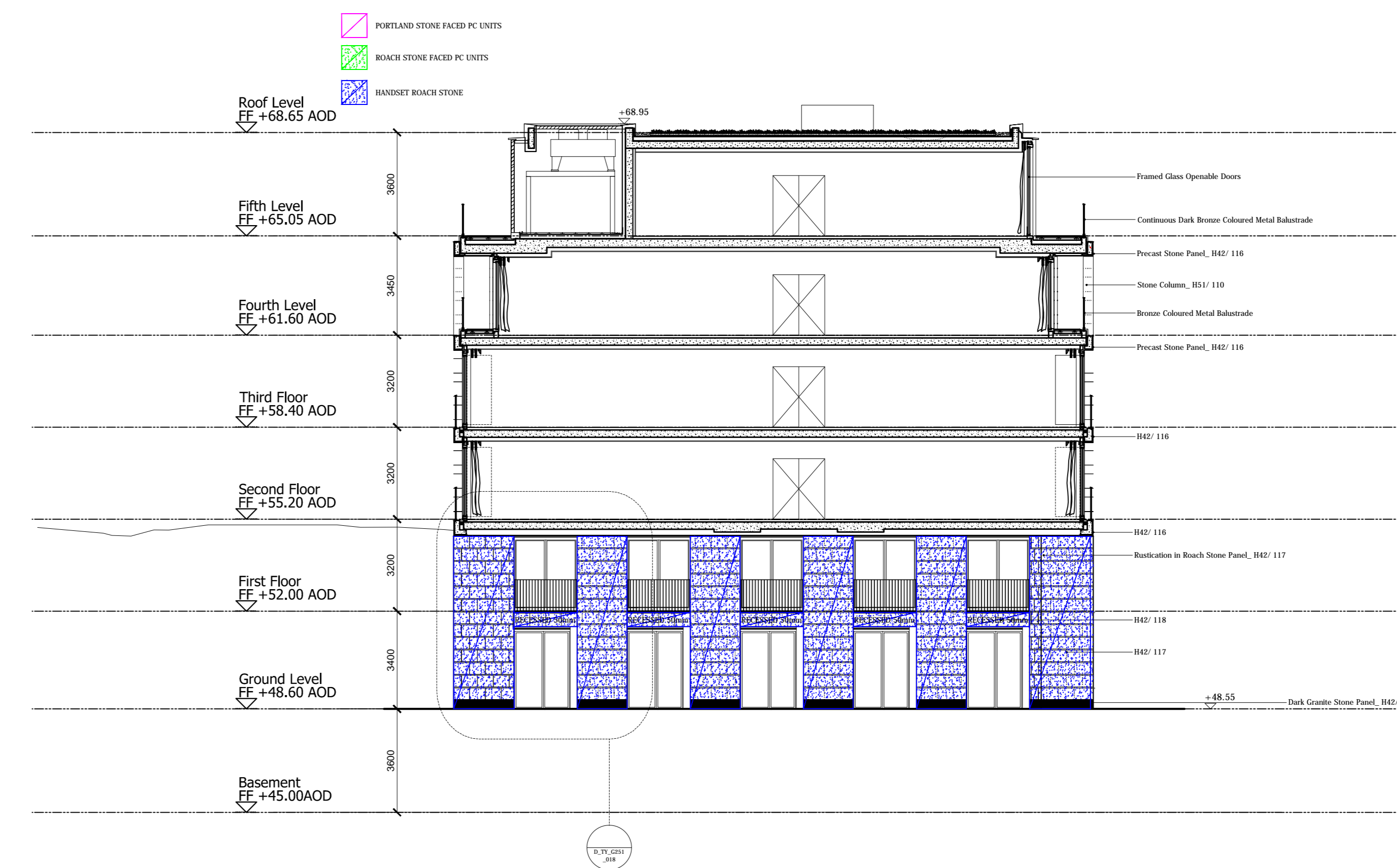
BLOCK 1 - West Elevation



BLOCK 1 - North Elevation



BLOCK 1 - South Elevation



BLOCK 1 - South West Elevation

Notes:

CDM Regulations
Design Risk Assessment:
The size and shape of individual stones for this project have been designed to satisfy the overall design requirements for the building. All persons handling and installing such stones should be aware that there are risks associated with this type of work that cannot be designed out.

RISK: INJURY
Risk Reduction:
Fixers must be suitably experienced in the handling of stones and employ lifting methods appropriate to the size and shape of that component. Access and platforms must be to the standard required by current legislation. References must always be made to COSHH information for the materials being used.

This drawing is the property of Grants and is for the use only by the contractual parties. Any copies made by other parties will voiden this drawing. Do not scale drawings. Do not work directly.



Project:
**ST EDMUNDS TERRACE
LONDON**

Contractor:
MACE

Drawing Title:
BLOCK 1 ELEVATIONS

Date: 19/12/12
Scale: 1:125@A0
Drawing No: 028-PE-01
Revision: