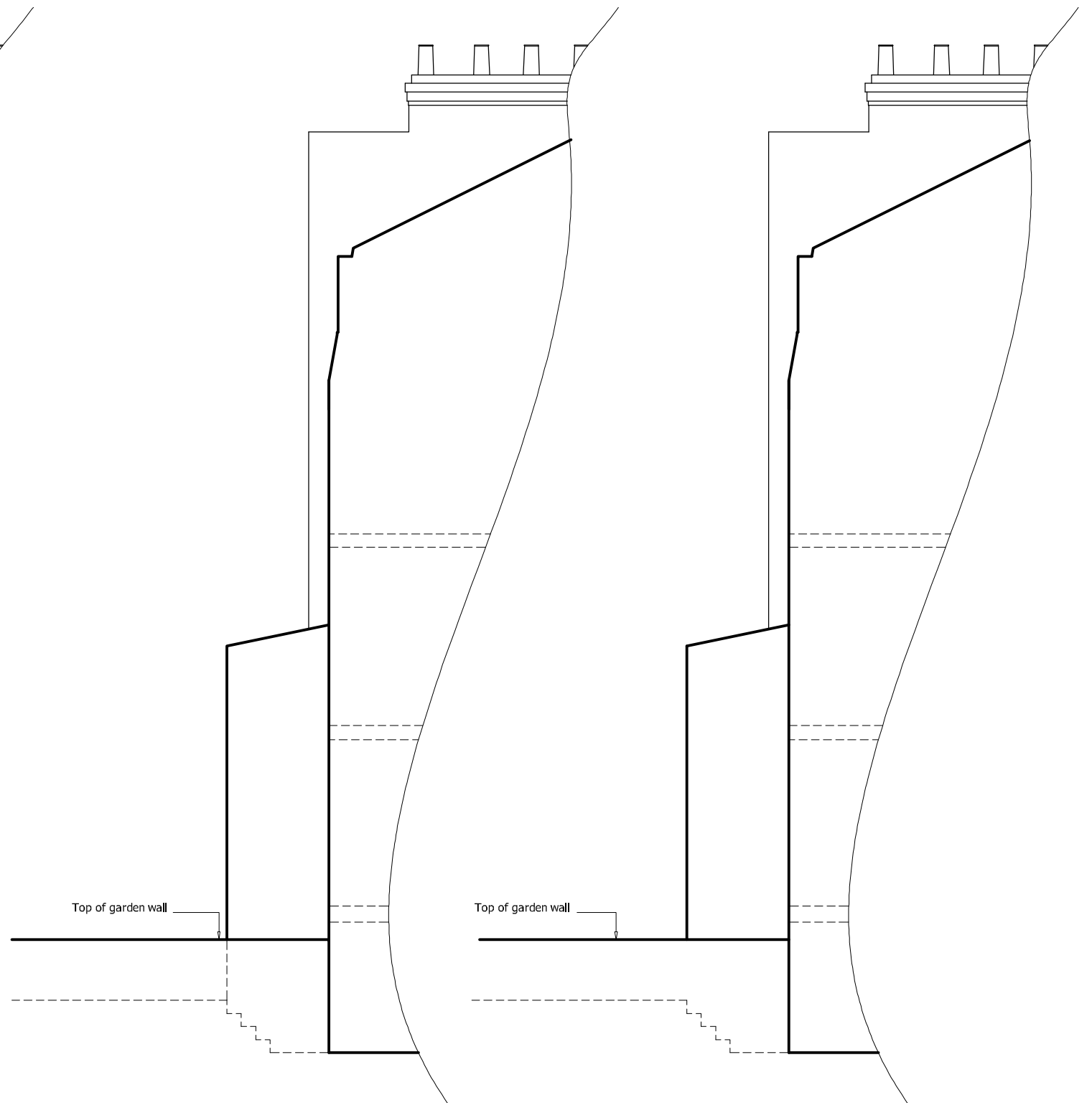


EXISTING PART SECTION

PROPOSED PART SECTION



EXISTING PART SIDE ELEVATION FROM No.3

PROPOSED PART SIDE ELEVATION FROM No.3

M 1:100  
0 1 2 3 4 5 [m]

<b>INDIGO</b> DESIGN ASSOCIATES LIMITED			
7A FILMER MEWS, 75 FILMER ROAD LONDON, SW6 7JF			
TEL: 020 7610 6122		FAX: 020 7610 6941	
www.indigo.gb.net		ma@indigo.gb.net	
PROJECT	SCALE	DATE	DWG NO
2 CHALCOT SQUARE LONDON NW1	1:100 @ A3	JULY 2013	CS 09 Rev A
REVISION			
EXISTING & PROPOSED PART SIDE ELEVATION/ PART SECTION			Rev A 1:24/6/2013 Existing sash window to kitchen retained following comments from planning officer. Access stair, landing & weight ton screen removed.