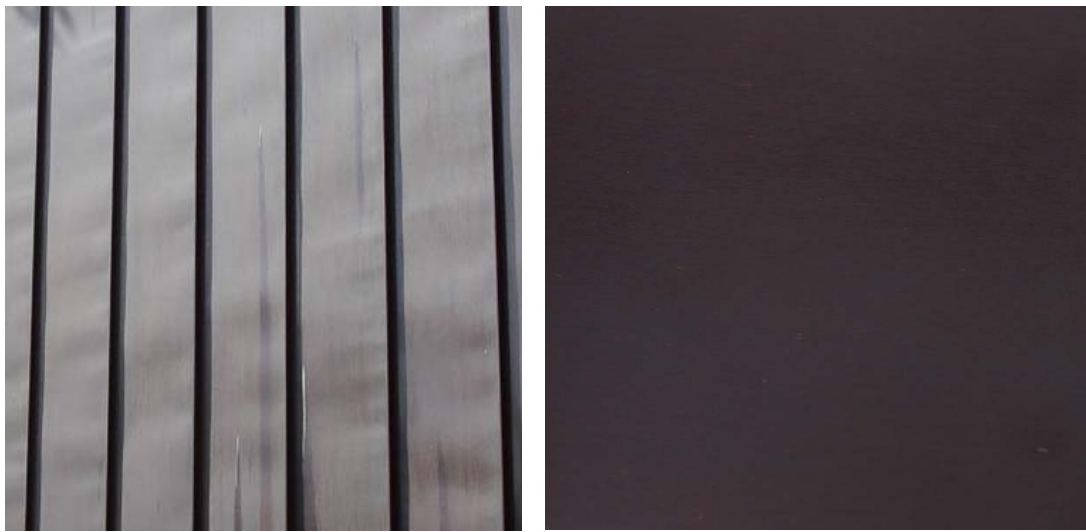


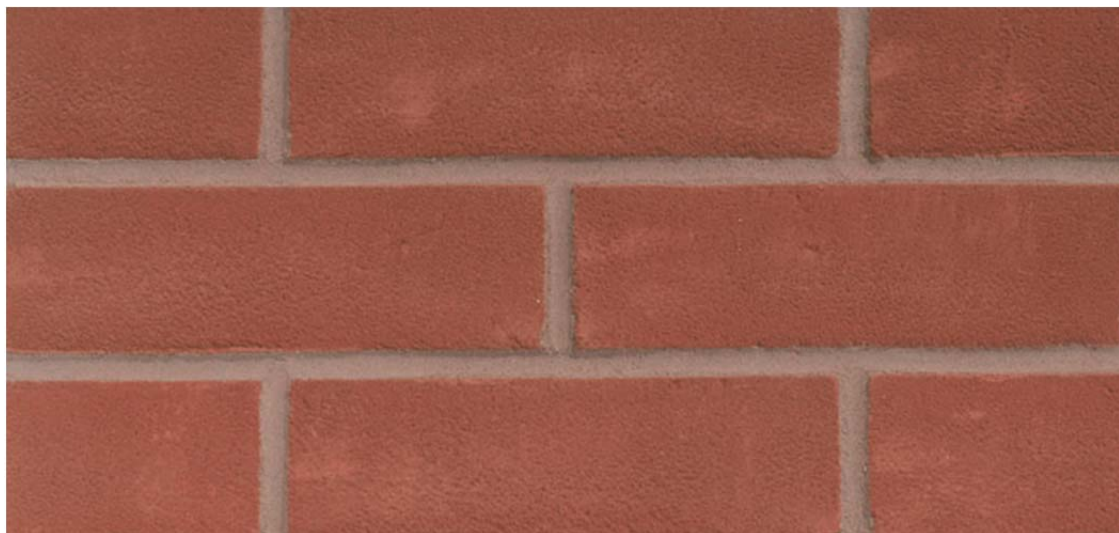
92 Prince of Wales Road, Kentish Town
London, NW5 3NE
T 020 7485 0050
F 020 7485 0030
mark@studiomr.co.uk

MATERIALS SAMPLE SHEET – EXTERNAL FINISHES

Camden Application Ref: 2009/5829/P
Decision Date: 29 October 2010
Address: Site at 38 REDINGTON ROAD, LONDON NW3 7RT



PRE-PATINATED COPPER: KME Architectural Metals GmbH & Co. KG, TECU® Oxid copper, anthracite brown oxidised



FACING BRICK: Hanson Heidelberg Cement Corp., Ecostock® Range - Atherstone Red, Category II, HD, Clay Masonry



POWDER COATED METAL LOUVERS & FENESTRATION FRAMES / PANELS: **RAL 8019**

ALL MATERIALS/FINISHES AVAILABLE TO VIEW ON SITE BY COUNCIL