

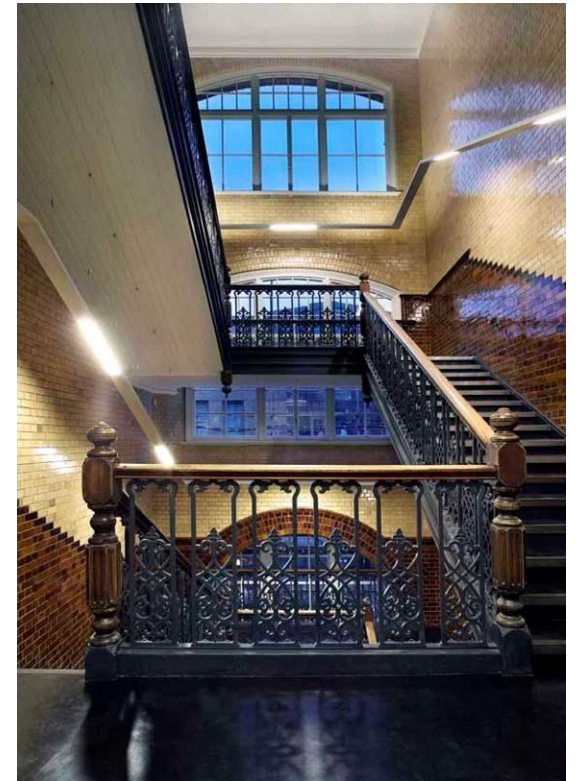
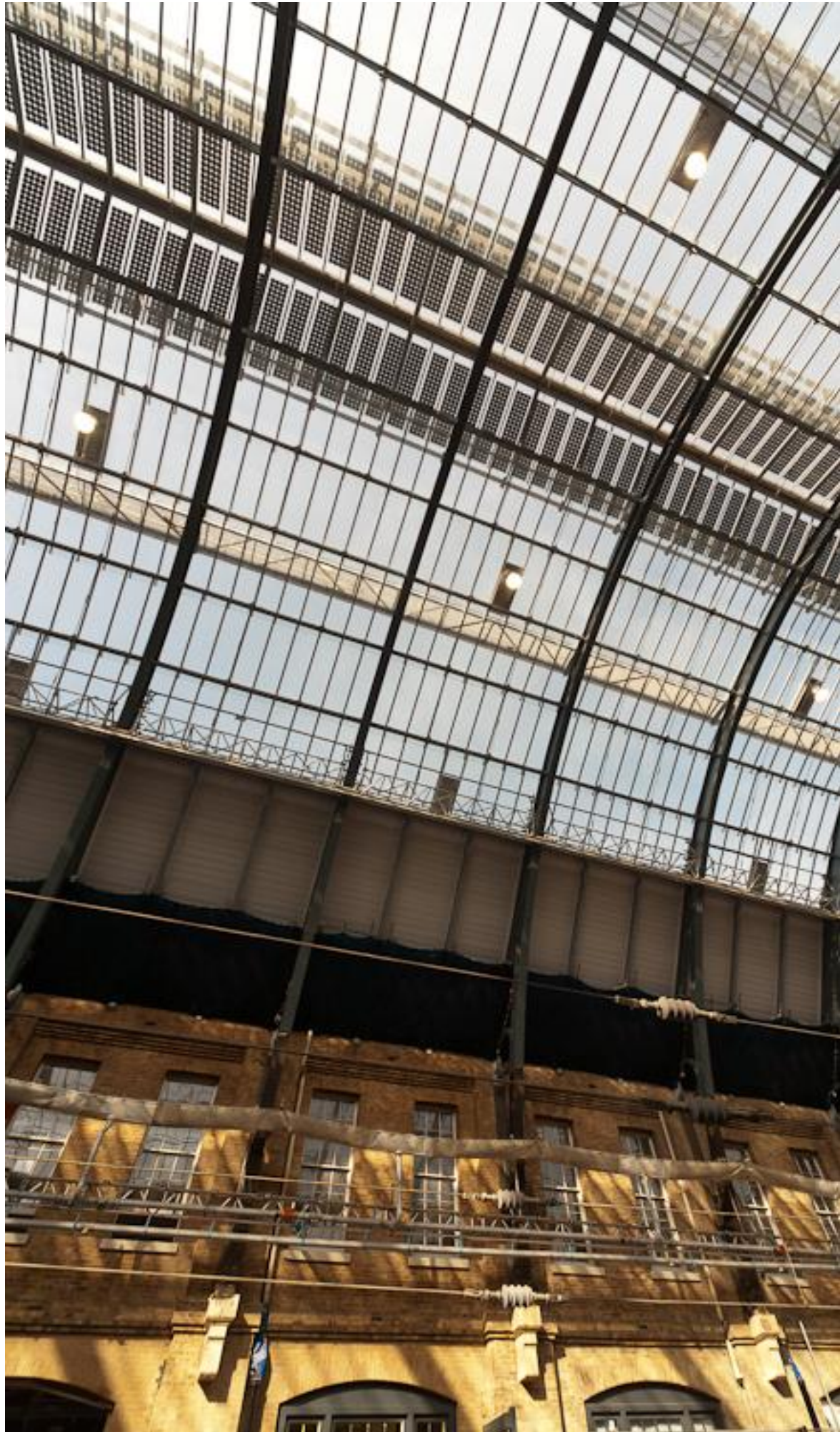


5.0 Existing Photographs

Survey photos of the Eastern Range Building included in this section were taken over 2 no. site visits completed on 12th and 31st July 2013. Typical areas and heritage features within the Southern end of the Eastern Range offices have been captured and arranged as follows

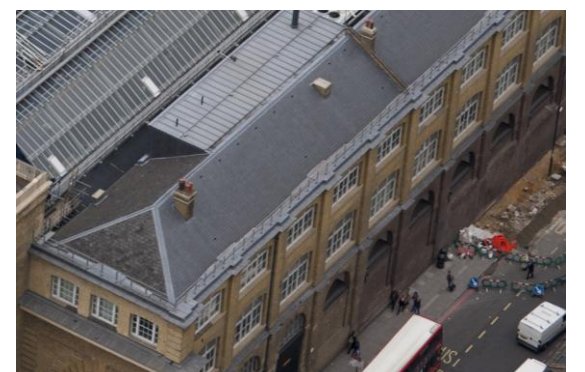
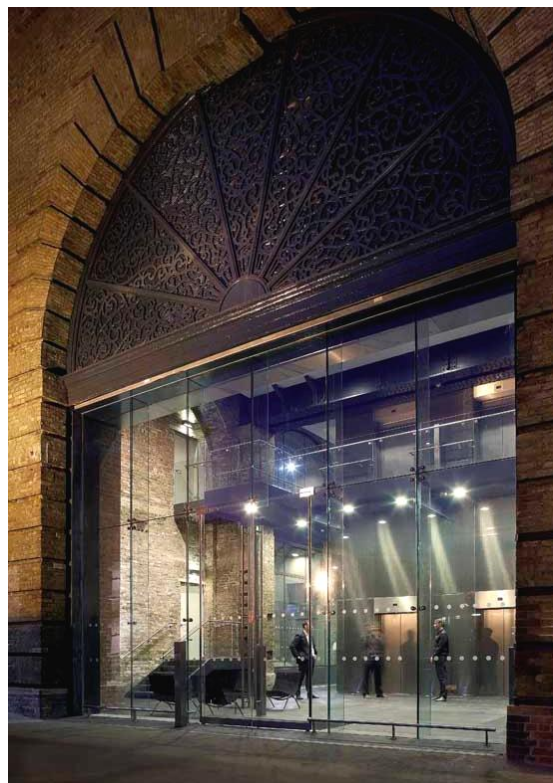
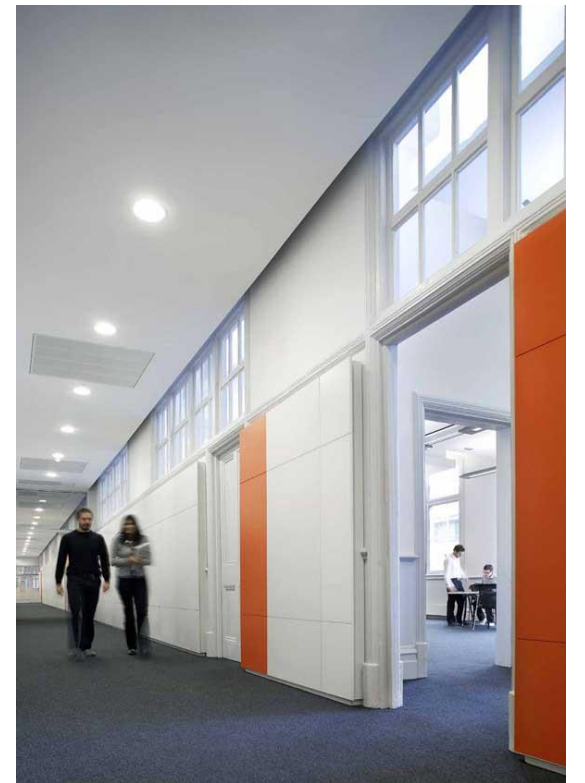
- General Station Images
- Corridor Areas
- Timber Features
- Office space
- ERB Reception

5.0 Existing Photographs



General Station Images

Archive Images of Train Shed, Patent Roof Glazing Courtesy of Network Rail

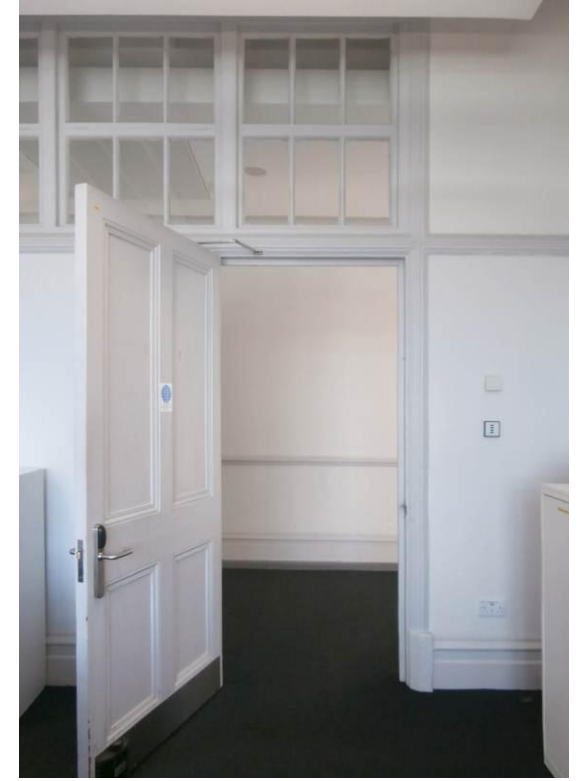




Corridor Areas

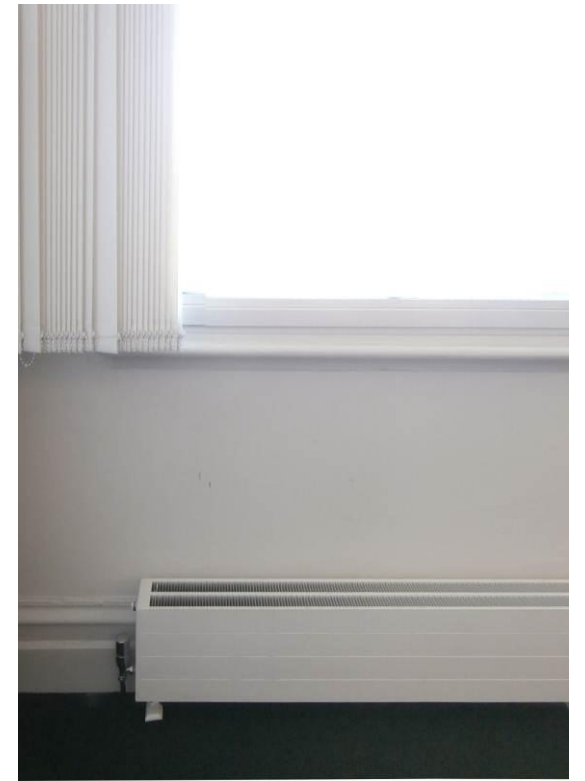
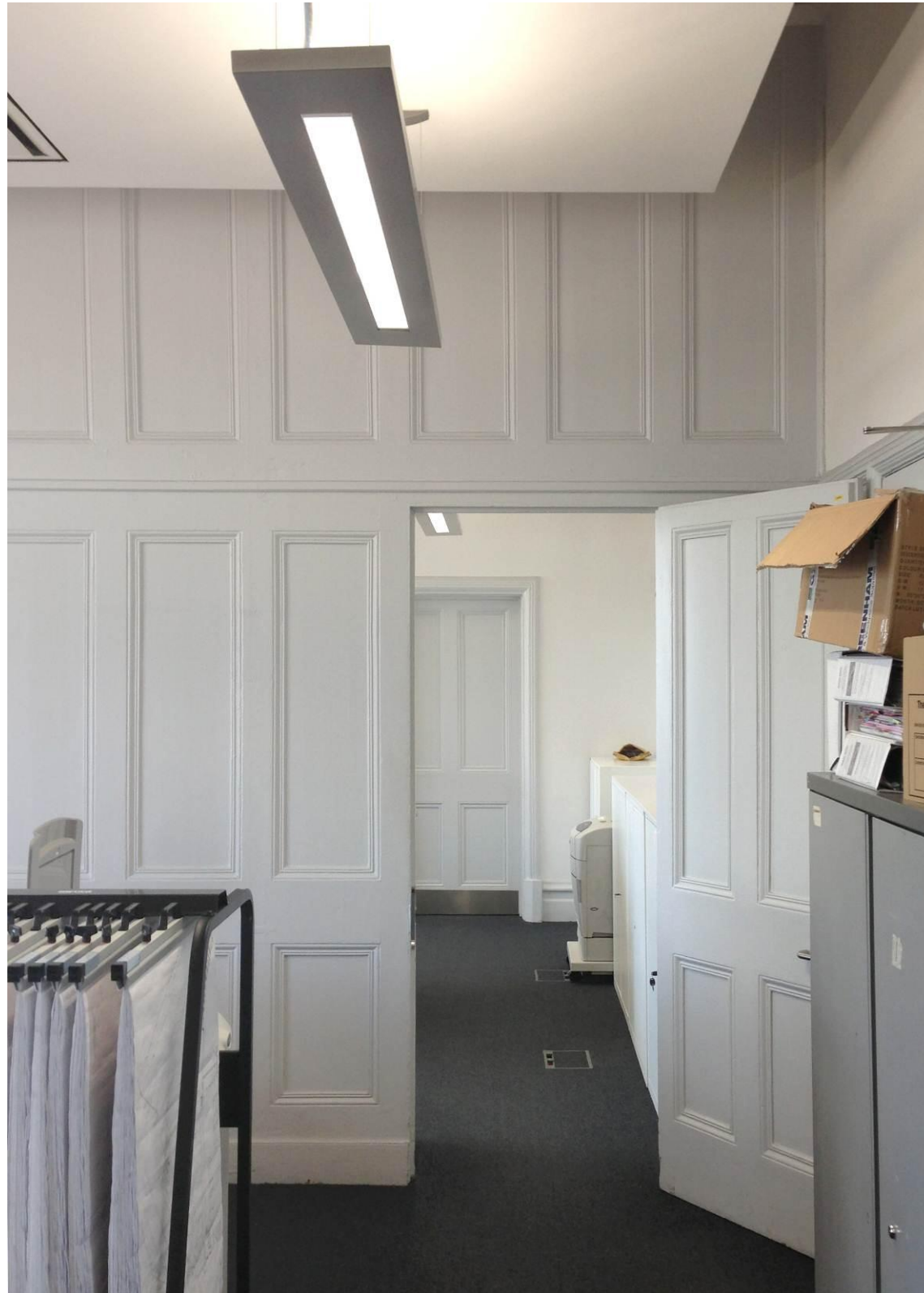
First and second floor Corridor photos show typical heritage architrave, skirting, dado rail, picture rail, clerestory glazing which are present along the length of the corridor. Recent fit-out elements are recorded, included perimeter floor trench, service bulkhead, wall cladding panels and a series aluminium fire doors. Photos dated 12th and 31st July 2013





Timber Features

First and second floor offices feature heritage timber panel partitions and doors with common door architrave. Original handsome covings and skirting's are still present within many of the offices. Recent office installation includes chilled beam service bulkheads, slimline radiators and a number of glazed aluminium doors. Photos dated 12th July 2013

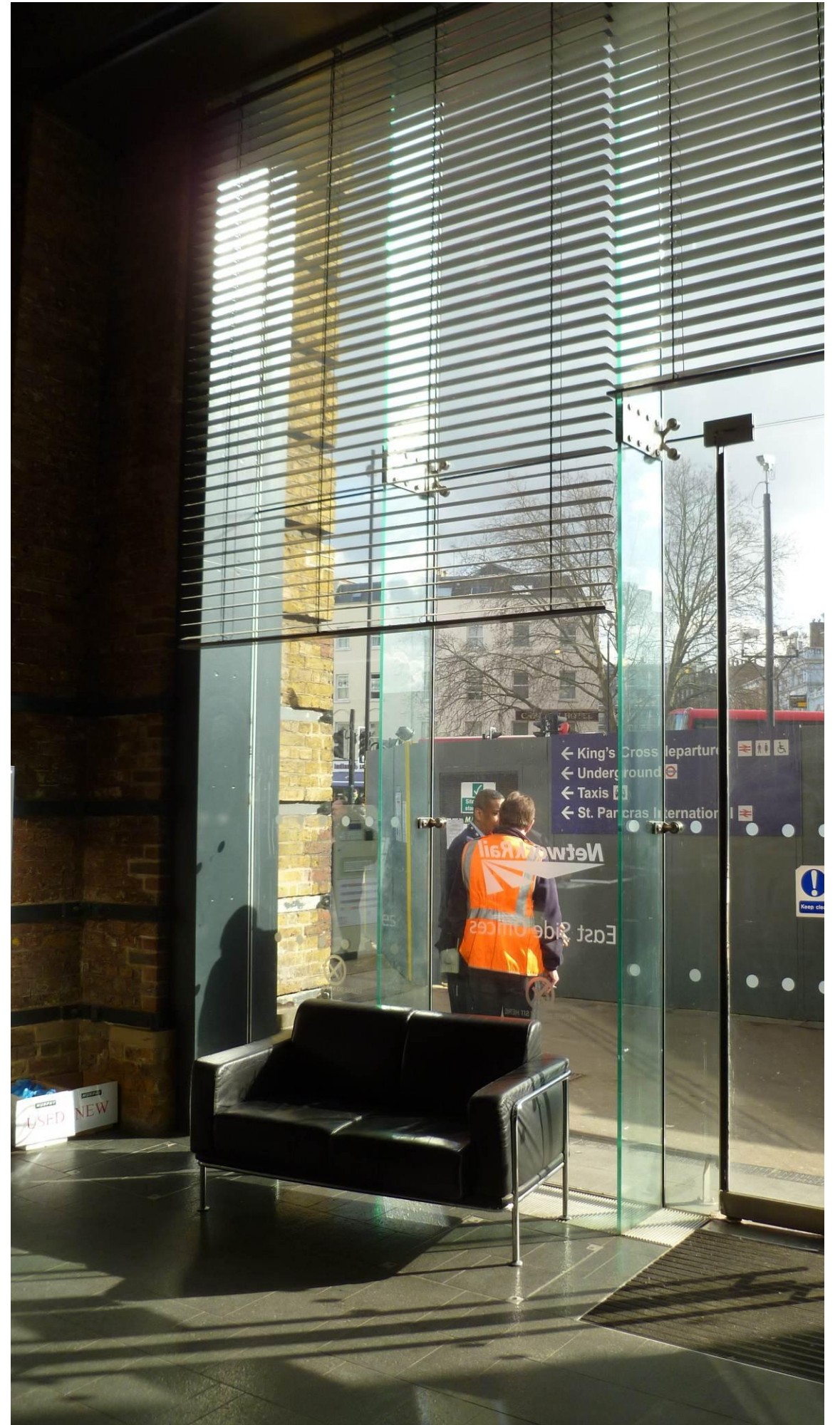
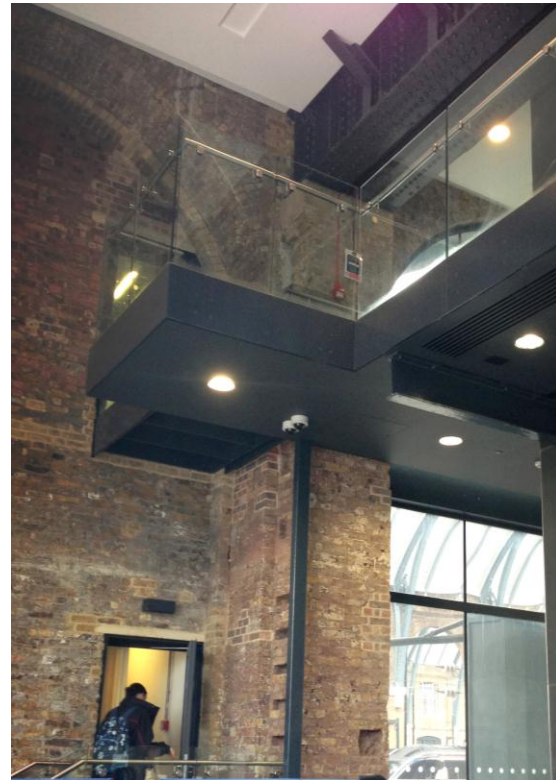




Office Space

First and second floor offices have been modernised with suspended inline luminaries plasterboard service bulkheads providing chilled beam cooling, secondary glazing units, under floor cable management, floor power boxes, slim-line radiators, wireless lighting controls. Various heritage features such as fire surrounds remain. Dated 12th July 2013





ERB Reception

Eastern Range Building Reception, includes ornate cast iron fret work, exposed industrial steelwork, original brickwork with linking views through to Kings Cross main train sheds. Photos dated 12th July 2013

