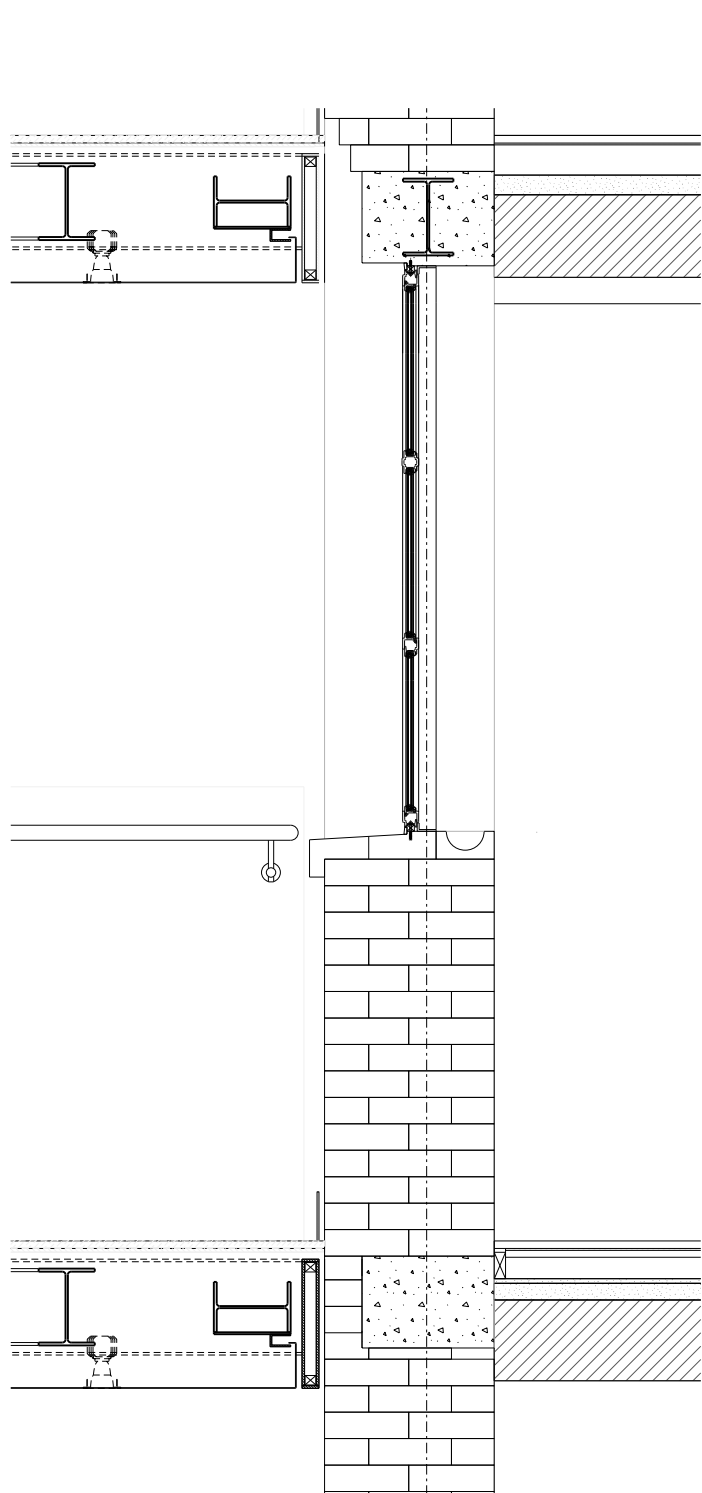
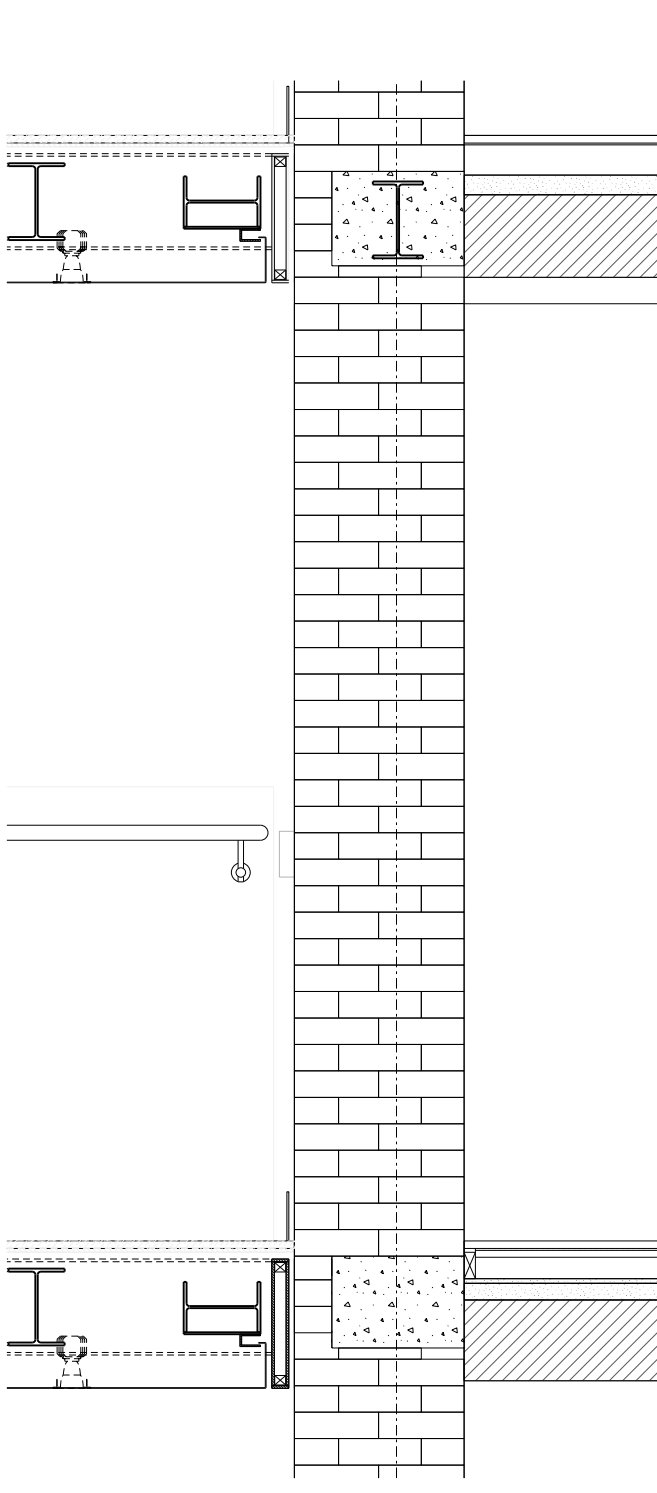


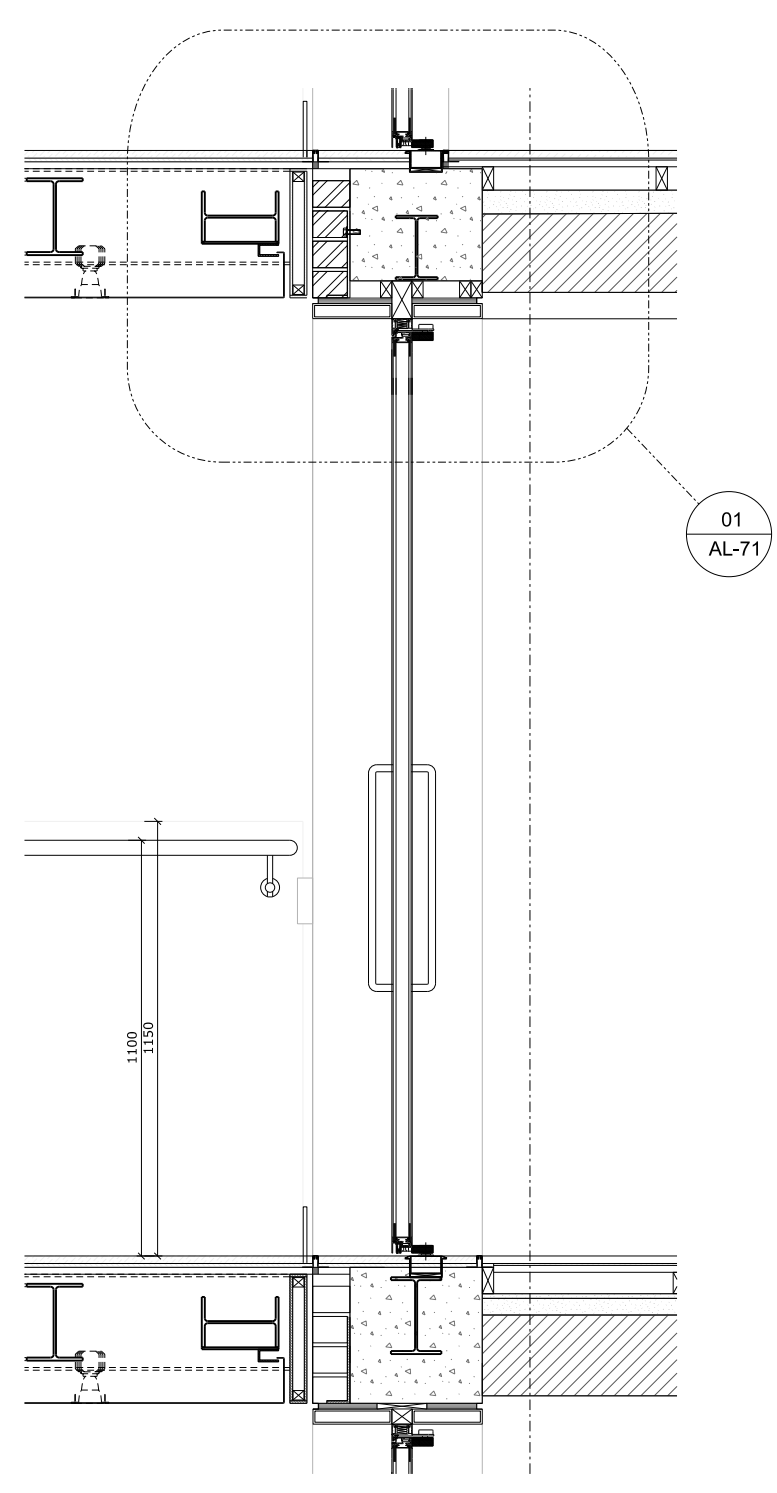
01 Elevation to block I - Interface to Bridge Links



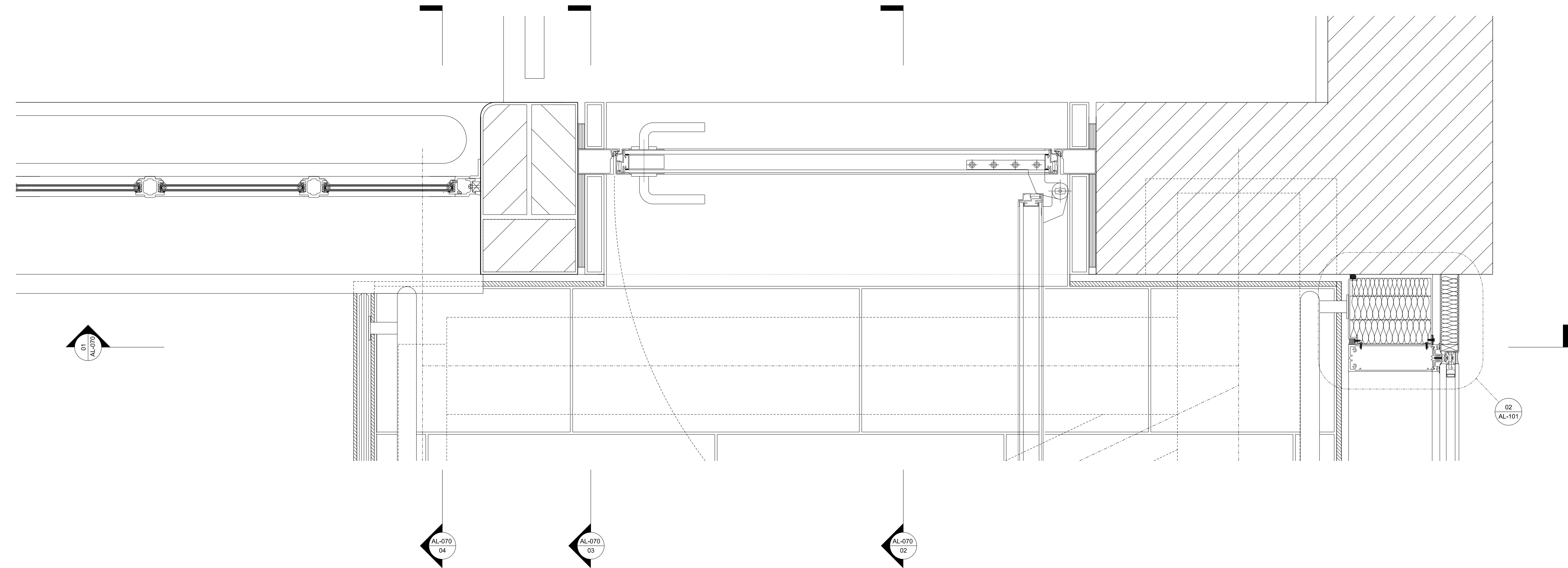
04 Section - Bridge Link Block I Interface



03 Section - Bridge Link Block I Interface



02 Section - Bridge Link Block I Interface



03 Plan of Bridge Link Interface to Block I

Notes

The survey / existing base information is based entirely on DB Systems Survey drawings (10-034-FP-0, 10-034-FP-1, 10-034-FP-2, 10-034-FP-3, 10-034-FP-4, 10-034-FP-5, 10-034-FP-6, 10-034-FP-7, 10-034-FP-8, 10-034-SEC-1, 10-034-SEC-2, 10-034-SEC-3, 10-034-SEC-4, 10-034-SEC-5, 10-034-SEC-6, 10-034-SEC-7, 10-034-SEC-8, 10-034-EL-AM, 10-034-EL-1-CR, 10-034-EL-TP) received in October 2010 and Ordnance Survey Data.

John McAslan + Partners therefore accept no liability for the accuracy of this information or its use. All consultants / contractors / sub-contractors should take into account discrepancies that could exist with the bases survey data and verify key dimensions on site. Any errors or discrepancies within this drawing are the sole liability of DB Surveys Ltd and should be reported directly to DB Surveys Ltd (01905 584805).

Notes:

1. Drawing to be read in conjunction with drawing nos. 1262-252-AL-030 & 031.

Rev.	Date	Description	Drawn	Checked
A	20.03.2013	Stage F	RK	EG
A	18.09.2013	Planning	JL	EG

KEY

- 01 Structure
- 02 Damp proof membrane
- 03 Scheduled waterproof membrane
- 04 Scheduled render
- 05 Scheduled glass
- 06 scheduled secondary support structure
- 07 Scheduled timber structure
- 08 Scheduled insulation
- 09 Vapour Control Layer
- 10 Insect Mesh
- 11 Scheduled screed
- 12 Scheduled wall lining
- 14 Scheduled insulation
- 15 stainless steel plate with countersunk fixings
- 16 Scheduled 18mm plywood treated to Euro class B
- 17 Scheduled powdercoated angle
- 18 Scheduled tiles
- 19 Scheduled fire curtain
- 20 Scheduled steel bracket
- 21 Scheduled plywood sheathing
- 22 Breather Membrane
- 23 Scheduled door
- 24 Underfloor heating
- 25 Scheduled downpipe
- 26 Scheduled blockwork
- 27 Fire resistant connection to glass
- 28 Scheduled stainless steel grille
- 29 18mm Marine Plywood
- 30 Scheduled stainless steel angle
- 31 Scheduled stainless steel brackets
- 32 Existing Hopper
- 33 Scheduled soffit
- 34 Scheduled render bead
- 35 Vertical timber batten
- 36 Scheduled stringing
- 37 Scheduled rainscreen cladding
- 38 Scheduled ceiling
- 39 Scheduled luminaire
- 40 Filler
- 41 Scheduled floor finish
- 42 Scheduled metal flashing
- 43 Scheduled handrail
- 44 Stainless steel ventilation grille
- 45 Scheduled glass fin
- 46 Scheduled powdercoated aluminum panel
- 47 Scheduled acoustic panel
- 48 Scheduled steel bracket by curtain wall subcon
- 49 Scheduled windows
- 50 Scheduled acoustic underlay
- 51 Scheduled EPDM
- 52 Silicone sealant
- 53 Scheduled glass balustrade and supporting channel
- 54 Scheduled plasterboard trim
- 55 Dressed timber closer
- 56 Scheduled curtain wall
- 57 Powder coated metal trim
- 58 Lead flashing
- 59 Powdercoated aluminum channel/anglebar
- 60 Scheduled brick
- 61 Scheduled concrete padstone
- 62 Scheduled electric motor driven opening glass unit
- 63 Scheduled rain water drainage system
- 64 Scheduled roof cladding
- 65 Scheduled timber support structure
- 66 Scheduled vapour permeable underlay
- 67 Scheduled timber roofing battens
- 68 Scheduled gutter
- 69 Scheduled insulated metal panel
- 70 Curtain walling and cap
- 71 Scheduled air diffuser
- 72 Scheduled brick slip
- 73 Schedules intercom system panel
- 74 Knauf Intumescent and Acoustic Mastic
- 75 Knauf Plasterboard Fillets
- 76 Knauf Sealant
- 77 Scheduled Knauf Stud/Channel
- 78 25 x 50mm Knauf steel angle
- 79 Knauf universal slab R50
- 80 Knauf Fireshield
- 81 Continuous band of Knauf Plasterboard Adhesive
- 82 Knauf Universal Bracket
- 83 Scheduled Knauf Joint Tape
- 84 Scheduled Anodised Aluminium Panel
- 85 Scheduled dressed full length hardwood packer
- 86 Scheduled timber plug
- 87 Scheduled timber seat
- 88 Scheduled steel railing
- 89 Scheduled timber panel
- 90 Scheduled glass panel shoe
- 91 Scheduled pre-cast stair
- 92 Scheduled entrance mat
- 93 Scheduled stainless steel trim to plasterboard
- 94 Painted mtl box
- 95 Scheduled aluminium support frame
- 96 Scheduled ironmongery
- 97 Scheduled ballast
- 98 Scheduled blinding
- 99 Scheduled floor edge trim
- 100 Scheduled timber batten
- 101 Scheduled timber cladding
- 102 Scheduled cladding
- 103 Scheduled lintel
- 104 Scheduled 50x50 Steel tie
- 105 Scheduled bedding adhesive
- 106 Beam and Block Structure
- 107 Scheduled Mortar
- 108 Movement Joint
- 109 Scheduled Slp Membrane
- 110 Scheduled concrete tanking fillet
- 111 Scheduled external paving
- 112 Scheduled mastic
- 113 Scheduled Neoprene
- 114 Scheduled Timber Joists
- 115 Scheduled Timber
- 116 Scheduled Nozing
- 117 Scheduled Stringer
- 118 Scheduled Handrail
- 119 Scheduled Underlay

JOHN McASLAN + PARTNERS

7-9 William Road
London NW1 3ER
T +44 (0)20 7313 6000
F +44 (0)20 7313 6001
www.mcaslan.co.uk

Architect
Landscape

Heal's Tottenham Court Road

Detail to Atrium Bridge Link openings- East

Scale At A1: 1:2	Job Number: 1262
Date: 18.09.2013	Drawing: JL
Drawing Status: Planning	Checked: EG
Drawing Number: 1262-Q252-D-AL-070	Revision: A