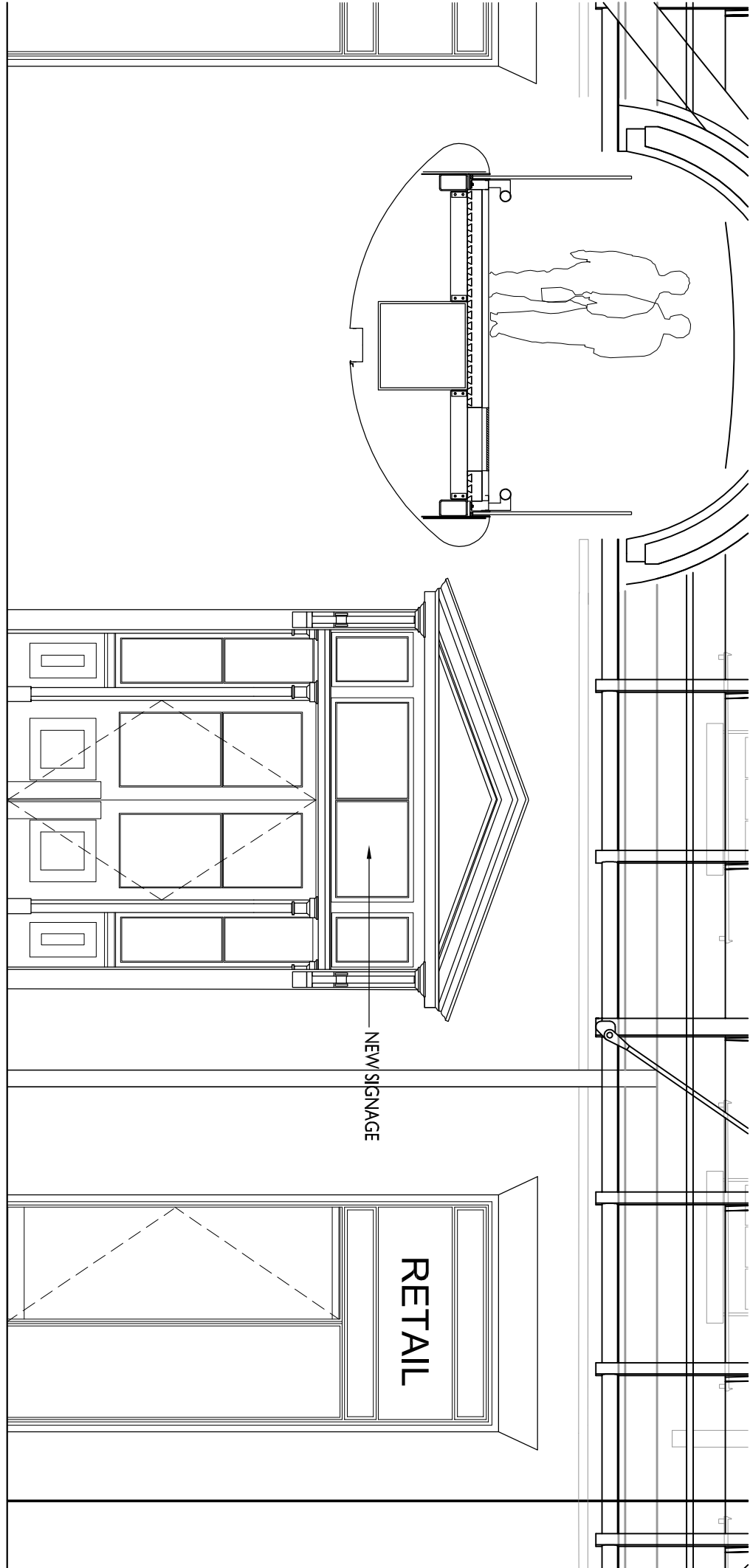


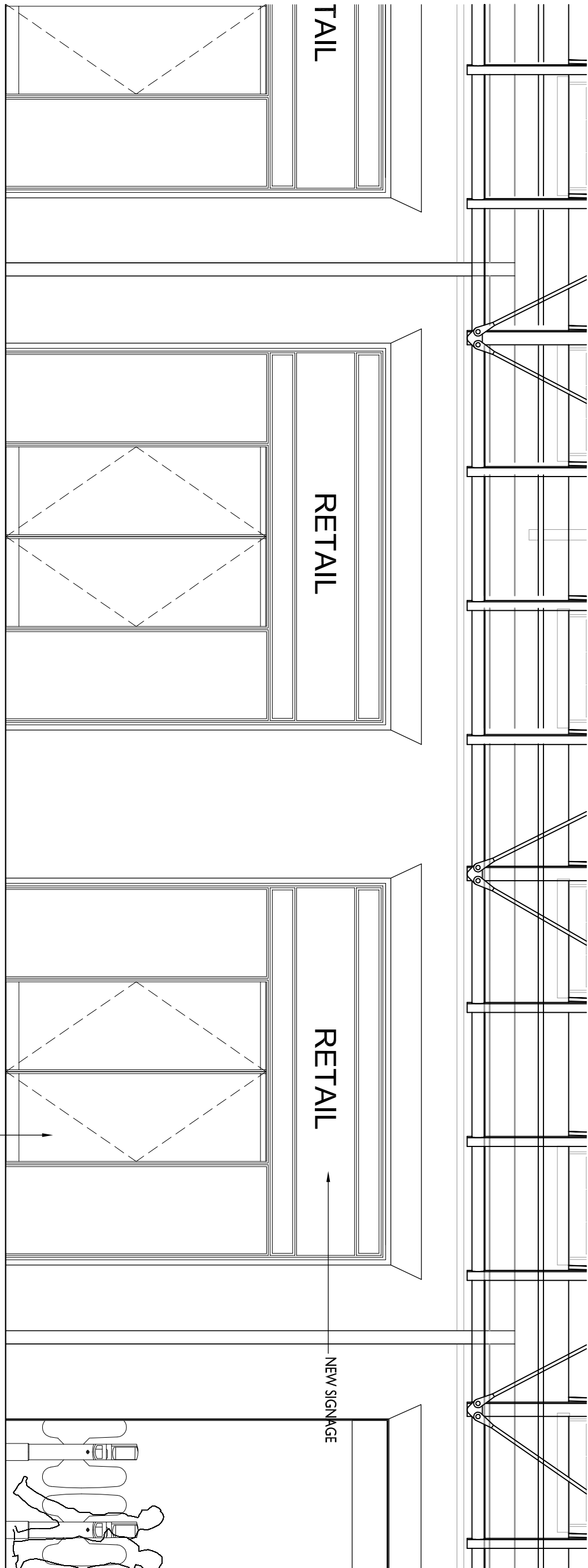
NOTES

Do not scale this drawing.

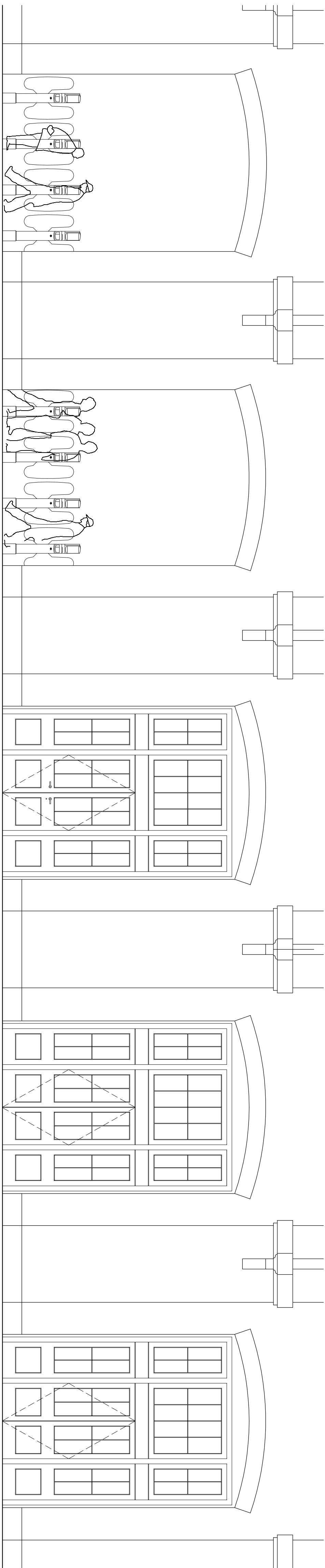
All dimensions to be checked on site prior to commencement of manufacture.



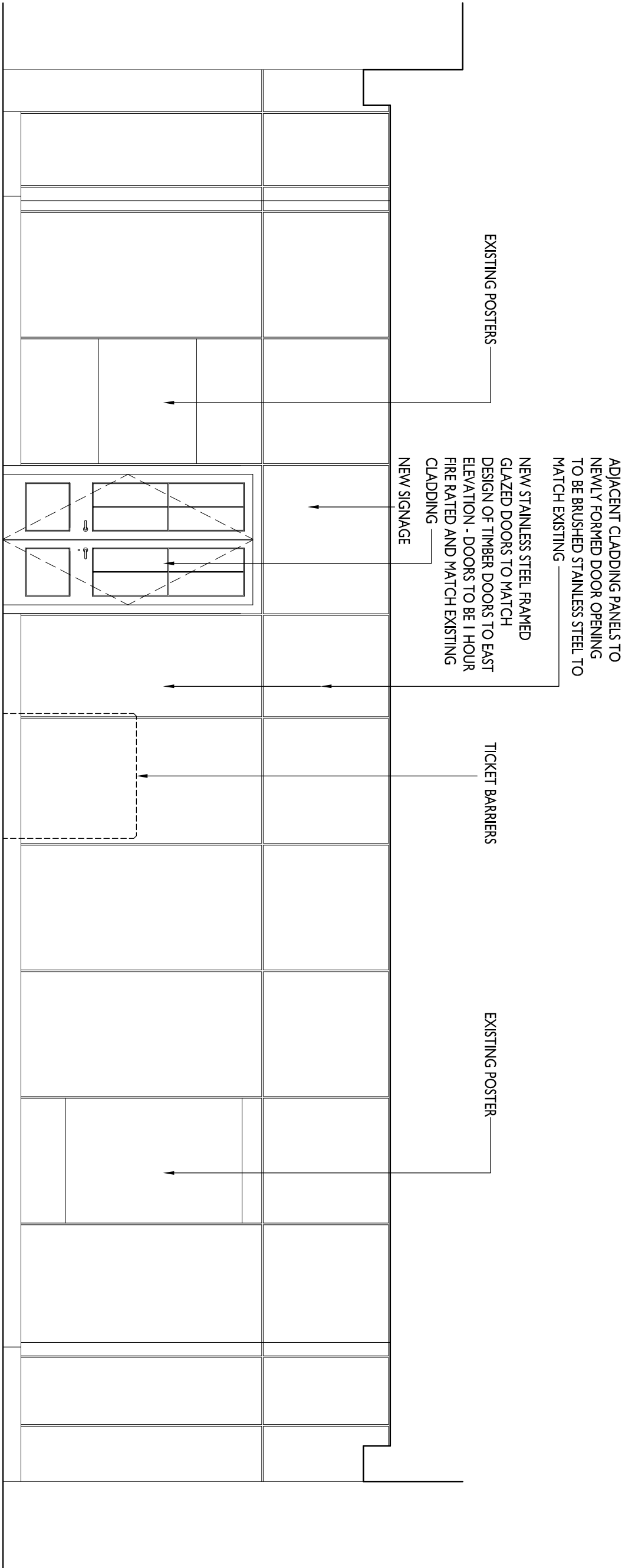
A
1:50
PROPOSED WEST ELEVATION TO UNIT G21 FROM CONCOURSE



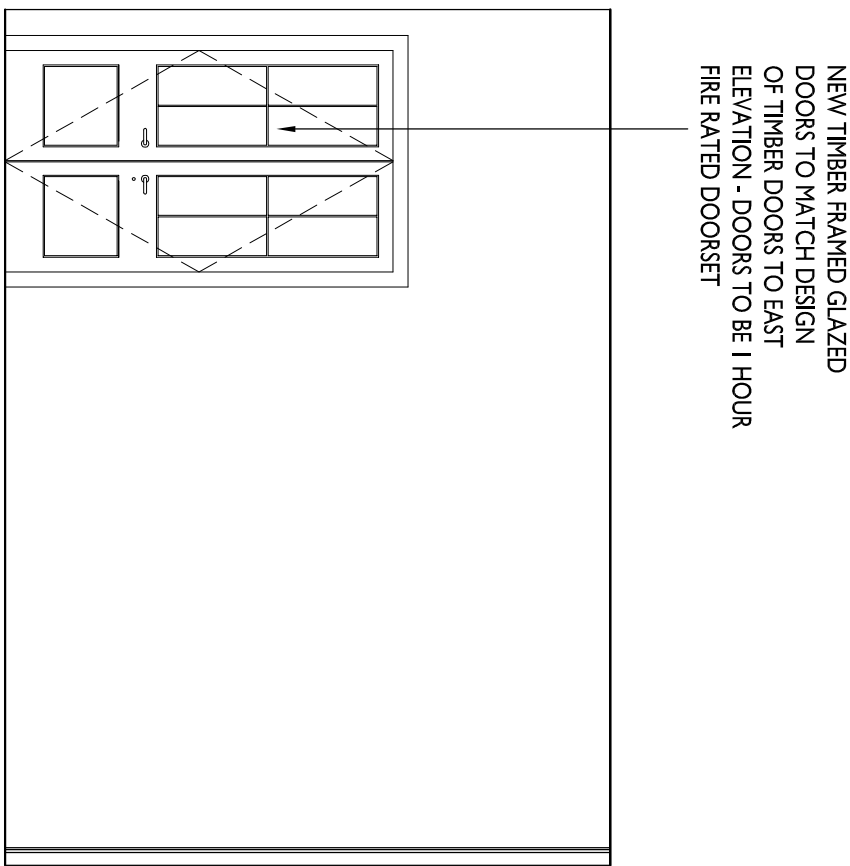
B
1:50
PROPOSED WEST ELEVATION TO UNIT G01 FROM CONCOURSE



C
1:50
PROPOSED EAST ELEVATION TO UNIT G01 FROM PLATFORM 8



1
1:50
PROPOSED SECTION TO LOBBY DOORS FROM TICKET BARRIER



2
1:50
PROPOSED SECTION TO LOBBY DOORS FROM LIFT/STAIR LOBBY

Rev	Date	By	CHK	Comment

BRINGING IDEAS TO LIFE

FRANKHAM



Frankham Consultancy Group Limited

Gresham House
24 Holborn Viaduct
EC1A 3BN
T: 020 7455 0790
E: enq@frankham.com
www.frankham.com

Client	NETWORK RAIL		
Project Title	KINGS CROSS STATION REDEVELOPMENT PROGRAMME		
Drawing Title	WESTERN RANGE BUILDING PROPOSED ELEVATIONS UNITS G01 & G21		
Drawn by:	Scale:	Date:	
PT	1:50 @ 1/100	15/07/13	
Designed by:	Checked by:	Approved by:	
PB	PB	PB	
File Ref:			
Drawing No.	440514A.103	Rev.	-