

General Notes
Do not scale from this drawing.
This drawing is to be read in conjunction with all relevant design team specifications and drawings.
All dimensions are to be checked on site prior to commencement of work any discrepancies reported to the Project Architect.
All materials and components are to be handled, stored, protected, installed and finished strictly in accordance with the manufacturer's recommendations.

Notes

A 18.09.2013 FIRST ISSUE JP

REV	DATE	DESCRIPTION	INITIALS
-----	------	-------------	----------

Shapiro Schulman

Station House

Station House
Swiss Terrace
London
NW6 4RR

Proposed Lower Ground Floor Plan

PD Rights

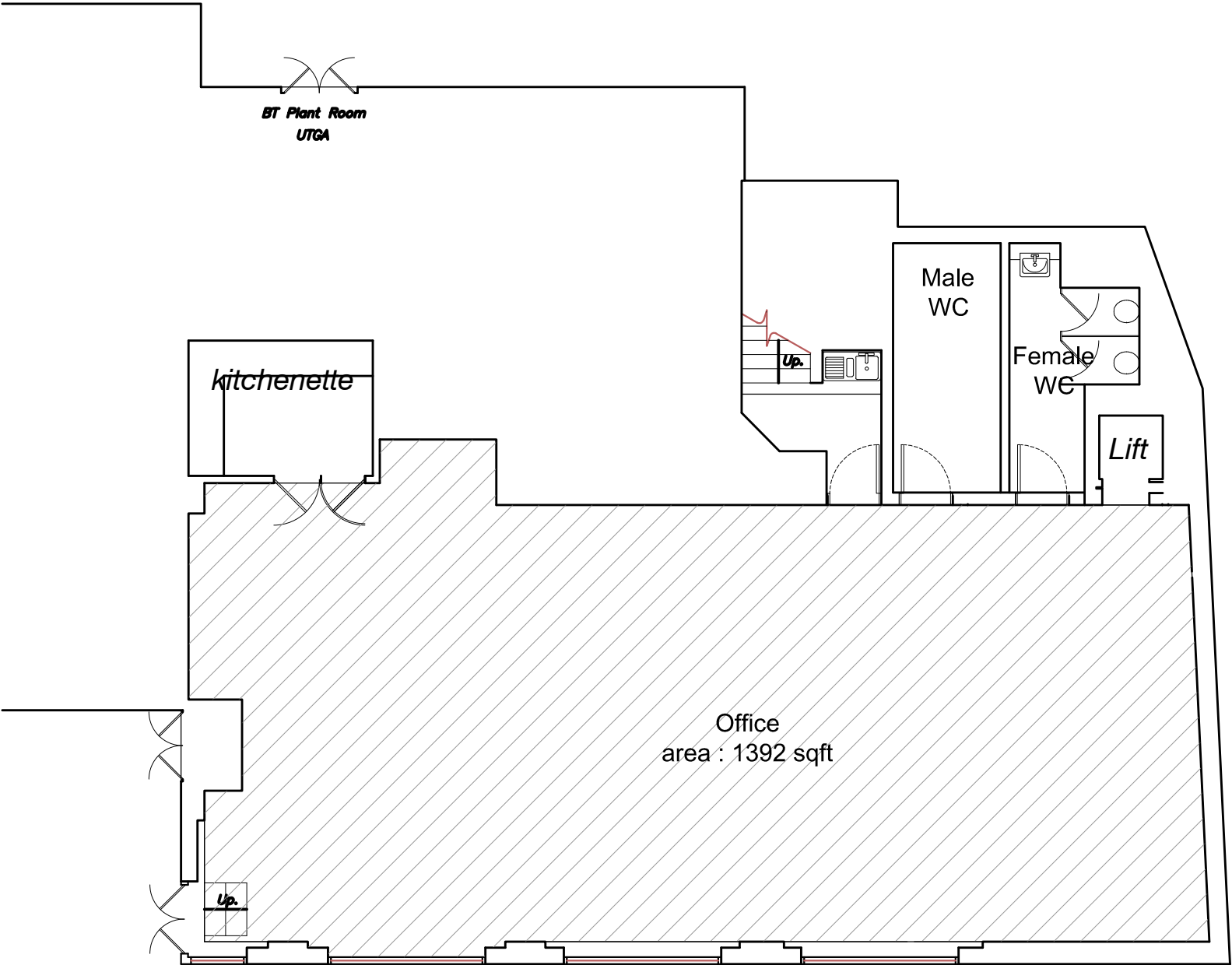
18.09.2013	1:100 @ A3
------------	------------

PD001	A
-------	---

JP	JA	Preliminary
----	----	-------------

MAP
architecture and interior design
MAP Architecture and Design Limited
Gallants Business Centre Lower Road, East Farleigh, Maidstone, Kent ME15 0JS
Telephone 020 7403 0009 info@amosarchitecture.com

Area Schedule	
Lower ground floor office	1392 sqft
Ground floor office	1616 sqft
Total office area	
3008 sqft	
1st 1bed / Apartment 01	484 sqft
1st Studio / Apartment 02	375 sqft
1st 1bed/ Apartment 03	566 sqft
1st 1bed / Apartment 04	523 sqft
1st Total	1948 sqft
2nd 1bed / Apartment 05	484 sqft
2nd Studio / Apartment 06	375 sqft
2nd 1bed/ Apartment 07	566 sqft
2nd 1bed / Apartment 08	523 sqft
2nd Total	1948 sqft
3rd 2bed / Apartment 09	890 sqft
3rd 2bed / Apartment 10	1173 sqft
3rd Total	2063 sqft
4th 2bed / Apartment 11	890 sqft
4th 2bed / Apartment 12	1173 sqft
4th Total	2063 sqft
5th 2bed / Apartment 13	890 sqft
5th 2bed / Apartment 14	1173 sqft
5th Total	2063 sqft
Total residential area	10085 sqft



Proposed Lower Ground Floor plan
Scale @ 1:100