



- Home
- Modular System
- Glass Channel System
- Stand Off Brackets
- Timber Effect S/Steel
- Timber Handrail
- Fixings
- Tools and Accessories
- Knowledge Centre

Glass Channel Assembly Instructions

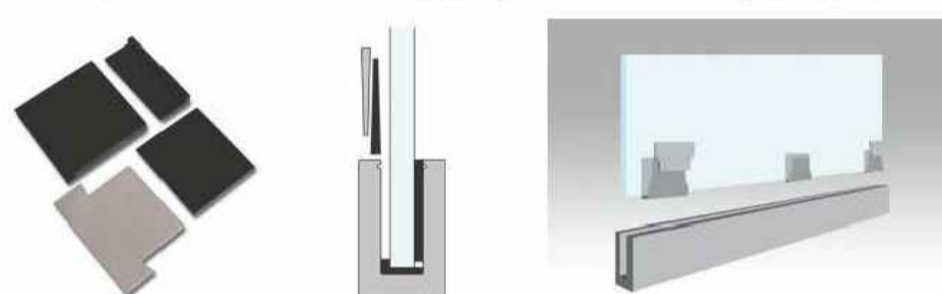
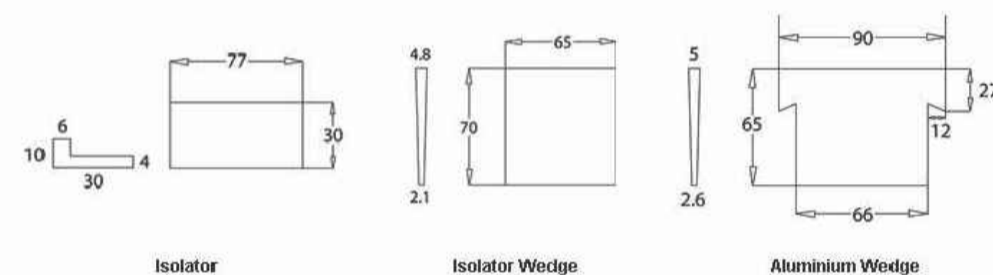
Our glass channel system can be base fixed or side fixed into a variety of materials using the appropriate [Spacers](#). Firstly use the aluminium channel as a template to mark out where the holes need to be drilled. Use spacers if necessary to ensure the channel is level. Remove the channel then drill the holes. Replace the channel and secure with fixings to make the channel rigid. The channel must be perfectly positioned vertically in order for the glass to be upright.



The wedges must be 100mm from the edges of each glass panel. Place the bottom isolators into the channel at maximum intervals of 200mm.

Position the glass and then place the side isolators above the bottom isolators. Slide the isolator wedges in between the glass and the aluminium channel, central to the bottom isolator and with the thin end pointing upwards.

Now slide the aluminium wedge between the isolator wedge and the aluminium channel with the wings protruding either side of the isolator wedge and approximately 15-20mm above the aluminium channel. When the required amount of wedges have been set up you can then hammer in the aluminium wedges with a lump hammer and bolster.



BALUSTRADE DETAILS nts

3/4/13

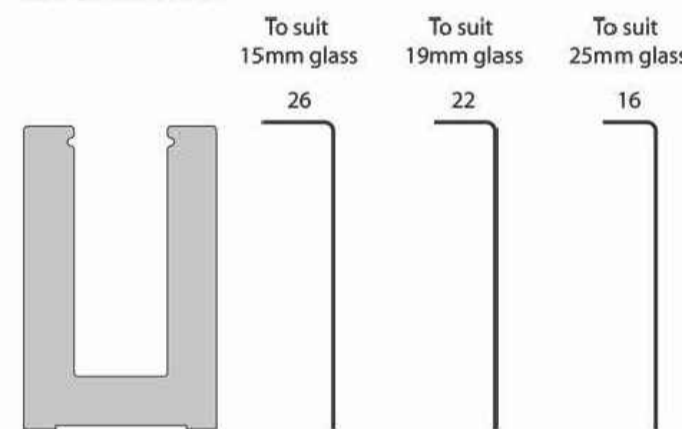
Steel Handrails | Glass Balustrade | Stainless Steel Balustrade

Should you need to remove the wedges, you can use a wedge removal kit. This can be purchased or rented from SVWR.

There are several ways to fit the cladding to the channel. You can use double-sided tape, silicone or adhesive. The tape method although strong overall, only gives you one chance to fit and does not allow for any movement.

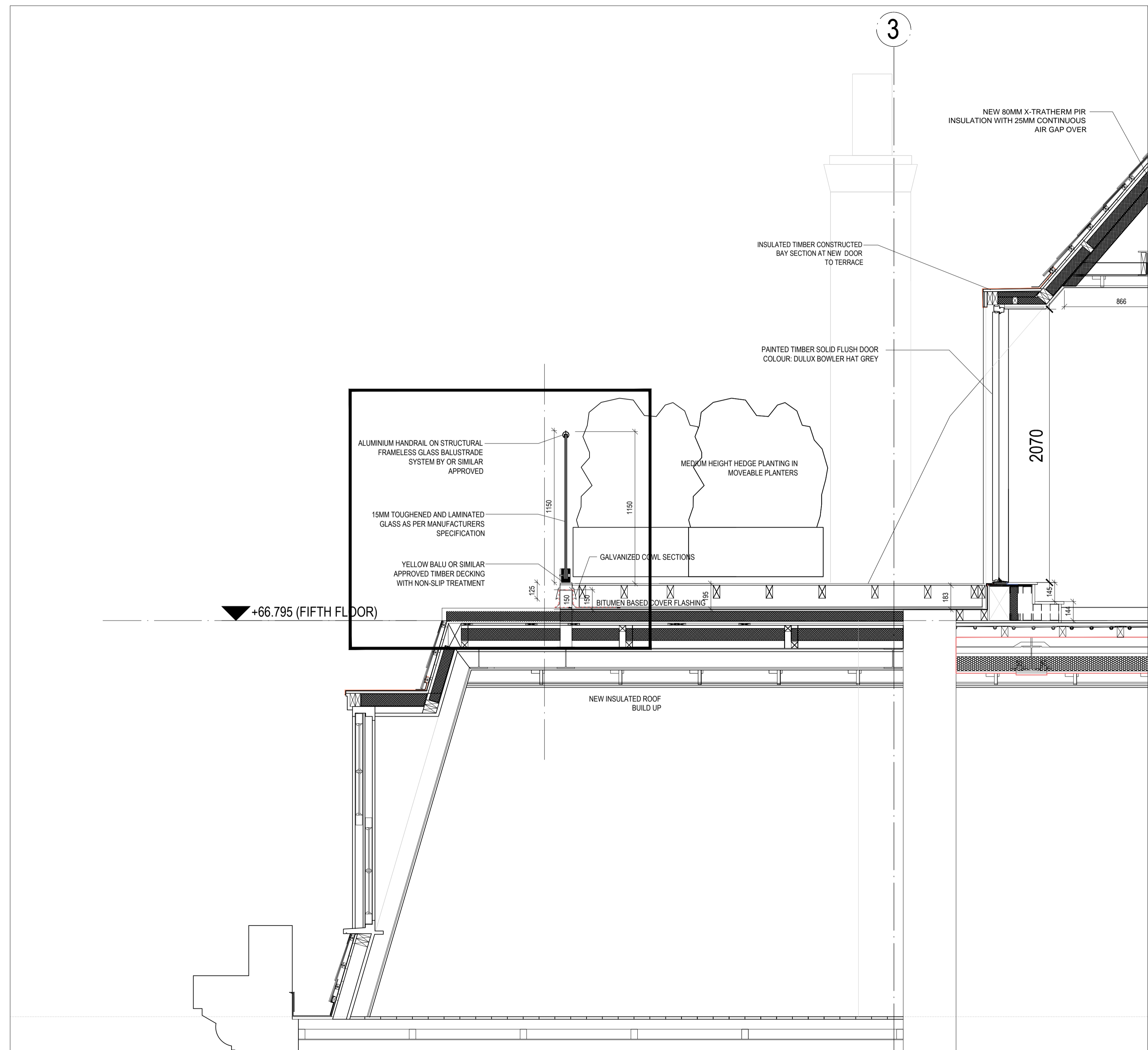
The silicone or adhesive method allows minor adjustments after bonding as it is in a liquid form before curing. SVWR recommend our adhesive for the job.

A small silicone bead can be used on the top of the cladding as this gives it a wonderful finish and will repel any liquid spill or weathered onto the cladding. The cladding sizes are below:



A stainless steel slotted handrail can be fitted to the top of the glass to complete the finish look as well as improving the structural stability of the system. The handrail easily slots onto the glass using rubber gaskets to ensure a snug fit.

BALUSTRADE DETAILS nts



SECTION Y-Y 1: 20

PLANNING DISCHARGE

REV.	DATE	DRWN.	DESCRIPTION	INT.
B	03.10.13	vs	For comment	
A	18.09.13	vs	Door colour revised	

PROJECT TITLE: RESIDENTIAL DEVELOPMENT 44 BEDFORD ROW, WC1R 4LL, LONDON FOR REGAL HOMES		DATE: 23-07-2012
DRAWING PURPOSE: DISCHARGE		CAD FILE No.: F01
DRAWING TITLE: BALLUSTRADE DETAILS PLANNING CONDITION NO. 3		SCALE: VARIES@A1
DRAWN BY: GM		CHECKED: AS
PROJECT No.: 1218		REV.: F02
DRAWING No.: F02		REV.: B

FIGURED DIMENSIONS ONLY TO BE USED THIS DRAWING IS COPYRIGHT © MAHONY PIKE ARCHITECTS LTD.