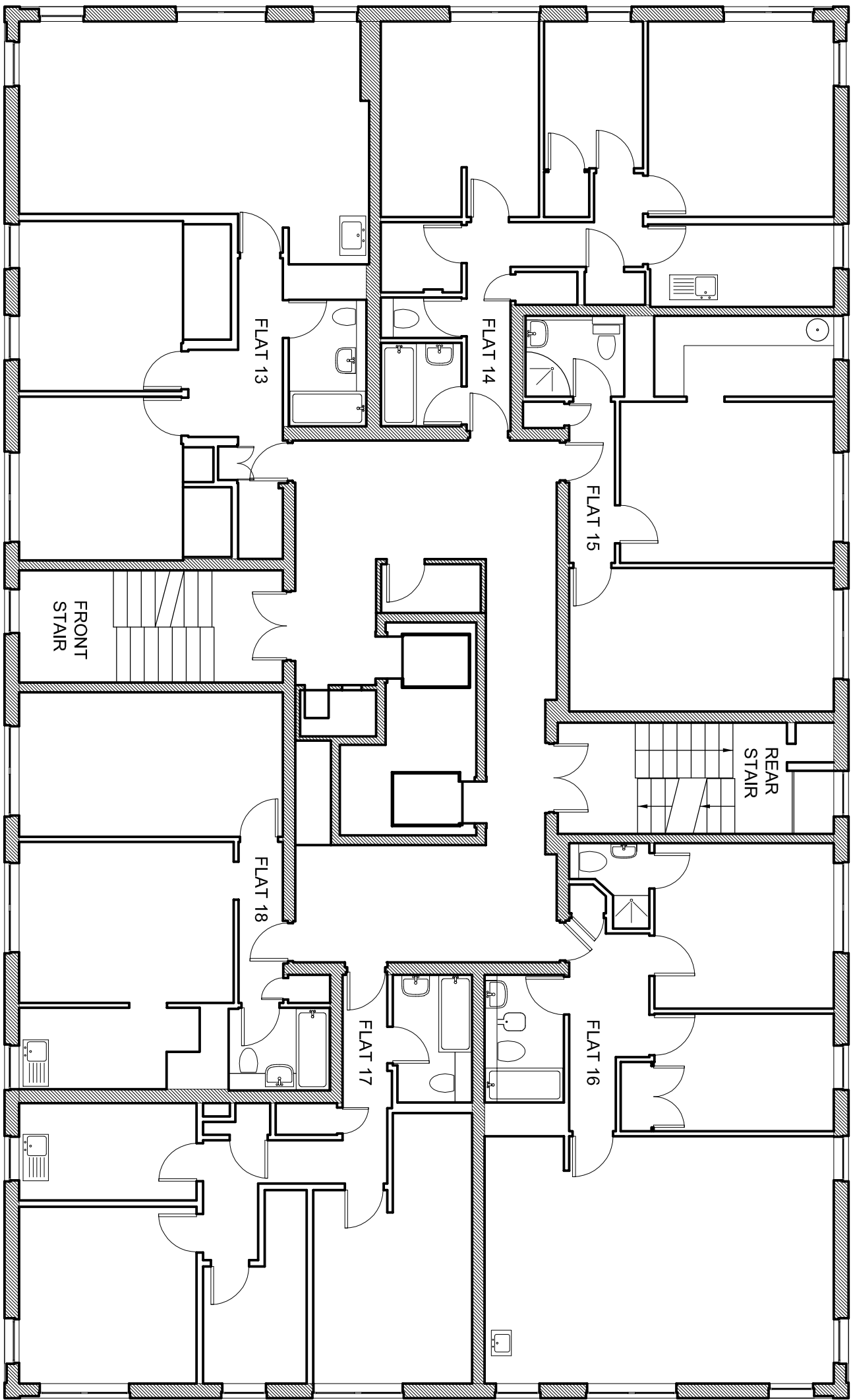
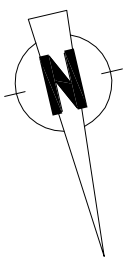
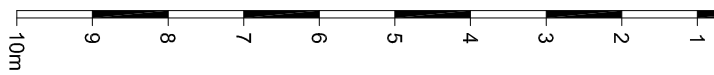


1 2 3 4 5 6 7 8 9 10m



JIM GARLAND ARCHITECTS LTD  
ONE DOLPHIN QUAY  
EMSWORTH PO10 7BU  
01243 370502  
01243 378127  
email: info@garland.org.uk

Site: Pitton Ltd, 32 Bloomsbury Street, London

200 78U Kings College Court, London NW3 3EA

Drawing Title: 3rd floor plan existing

Scale: 1:100 Date: 05/12/12

Drawing Number: 0903/0103  
Revision: P1  
Sheet Size: A3