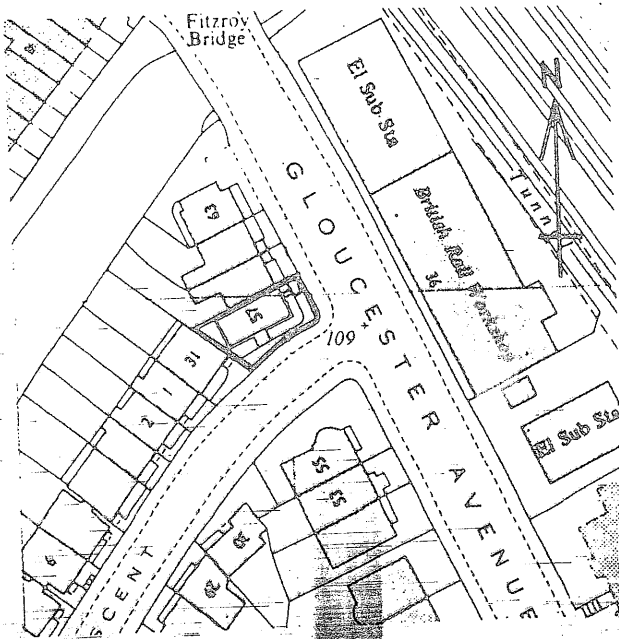
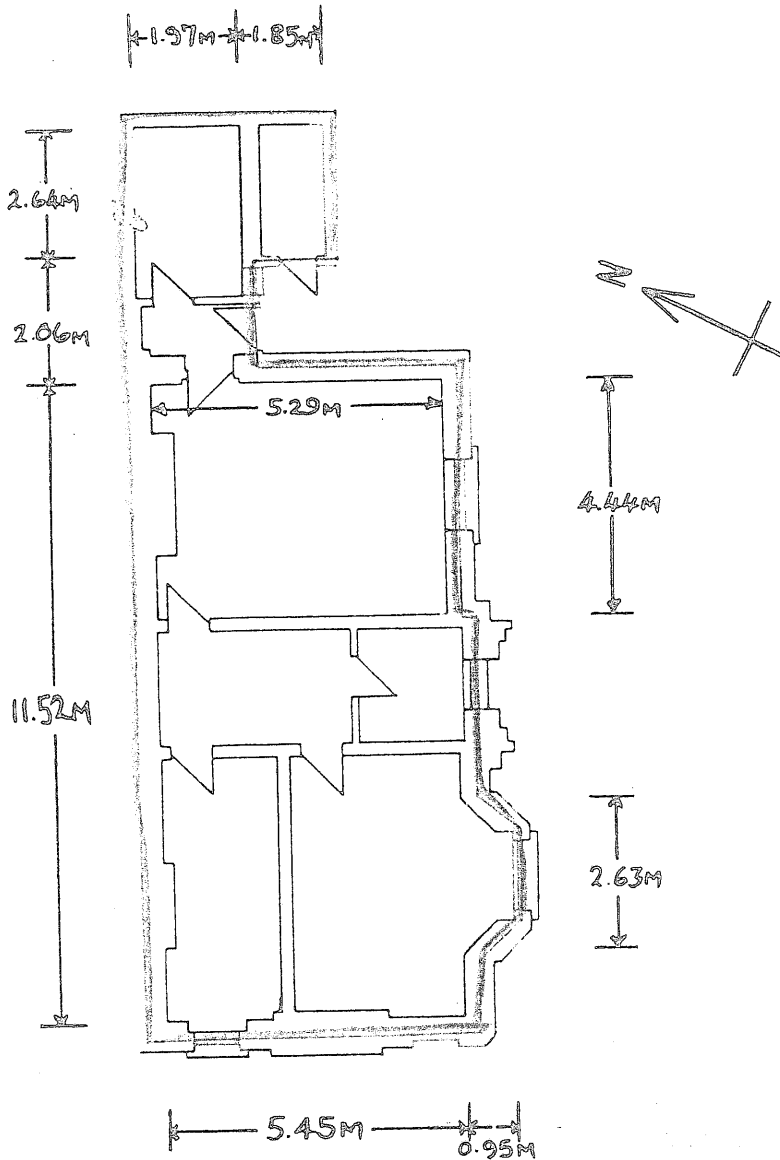


# 57A, GLOUCESTER AVENUE, NW1.

## BASEMENT FLAT



Not to scale.

The ordnance survey extract defines the curtilage of no. 57 GLOUCESTER AVENUE outlined in heavy black. The area delineated red thereon shows the approximate position of the demise within the house. The extent of No. 57A, GLOUCESTER AVENUE to be ascertained from the large plan(s).

The large plan identifies by red outline at floor level, the demised premises.

REF. :- 901608420