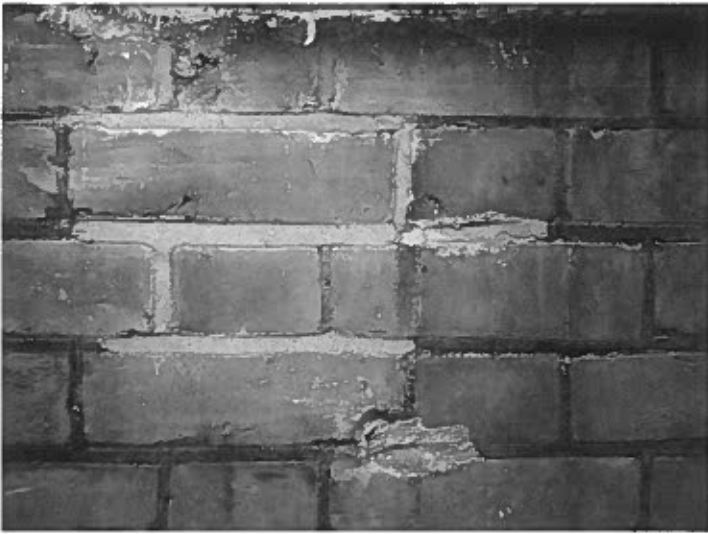


Photographic survey of brickwork for 2 Clorane Gardens  
(To accompany file note dated 12 September 2013)



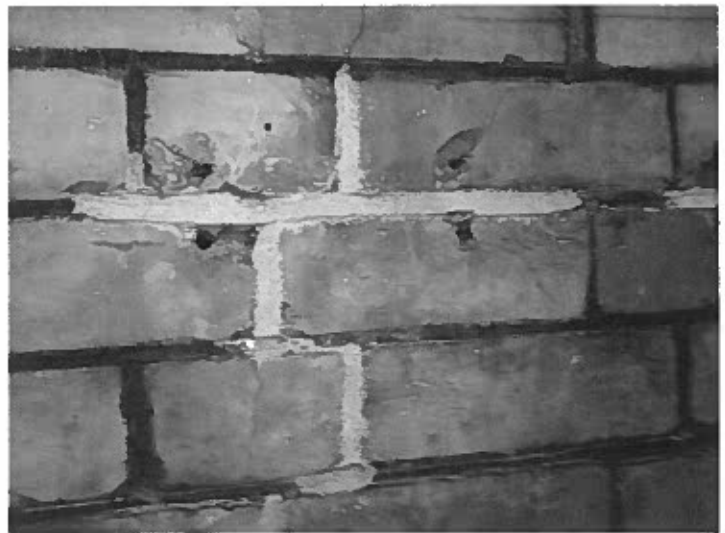
pointing problems01.jpg



pointing problems02.jpg



pointing problems03.jpg



pointing problems04.jpg



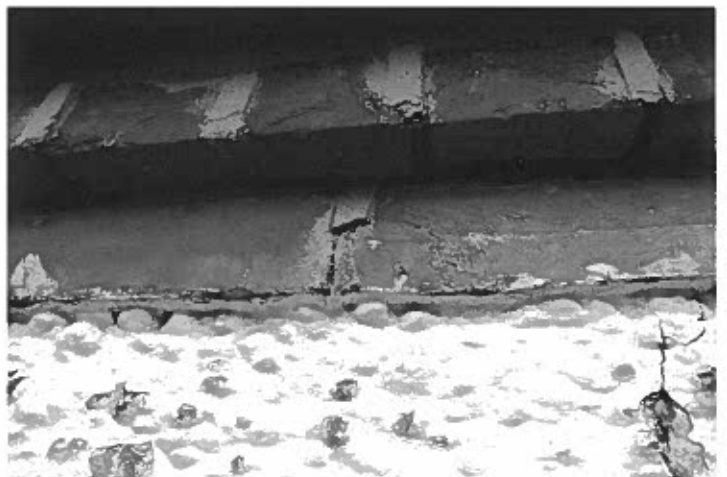
pointing problems05.jpg



pointing problems06.jpg



pointing problems07.JPG



pointing problems08.JPG



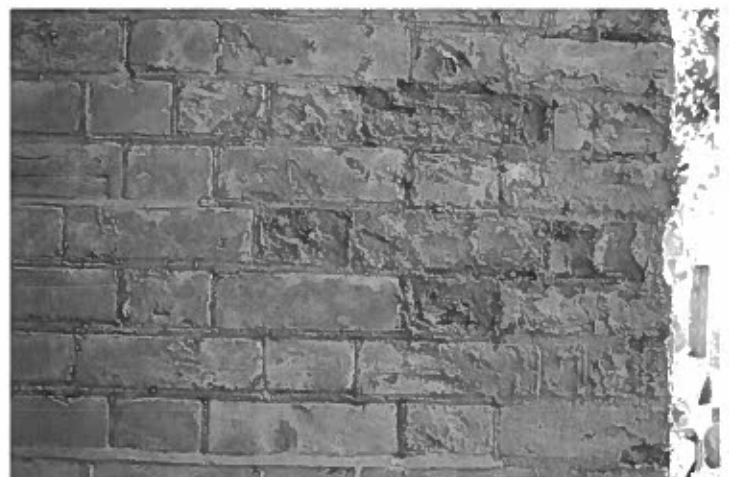
pointing problems09.JPG



pointing problems and spalling10.JPG



pointing problems and spalling11.JPG



spalling12.JPG



spalling13.jpg



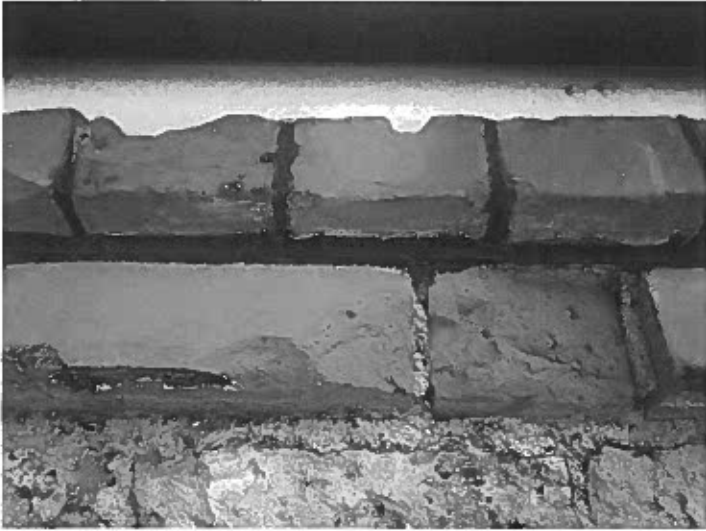
spalling14.jpg



spalling15.jpg



spalling16.JPG



cornice and decorative details17.jpg



cornice and decorative details18.jpg

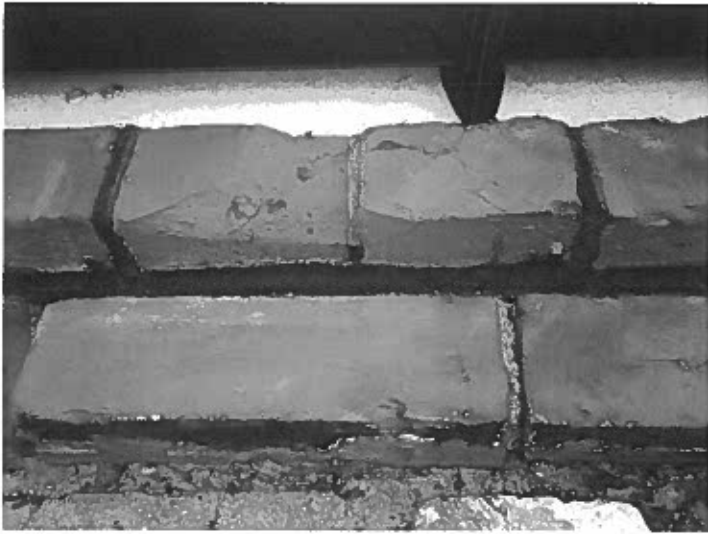


cornice and decorative details19.jpg



cornice and decorative details20.jpg





cornice and decorative details21.jpg



cornice and decorative details22.jpg



cornice and decorative details23.jpg



cornice and decorative details24.JPG



cornice and decorative details25.JPG



cornice and decorative details26.JPG



cornice and decorative details27.JPG

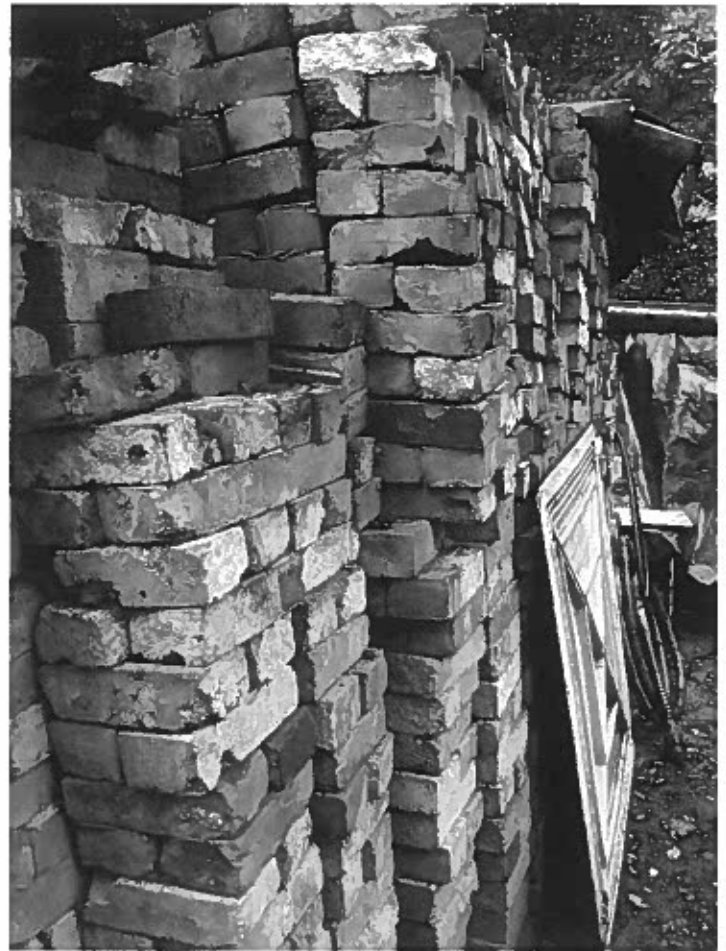


cornice and decorative details28.JPG





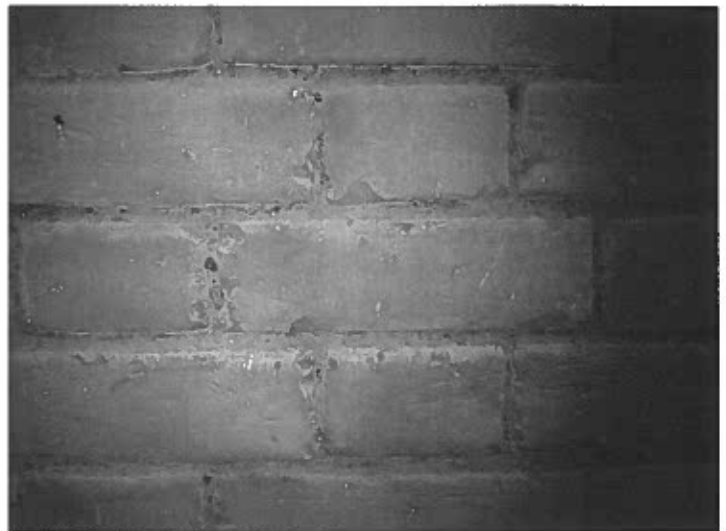
cornice and decorative details29.JPG



salvaged bricks30.jpg



salvaged bricks31.JPG



test panel32.jpg



test panel33.jpg



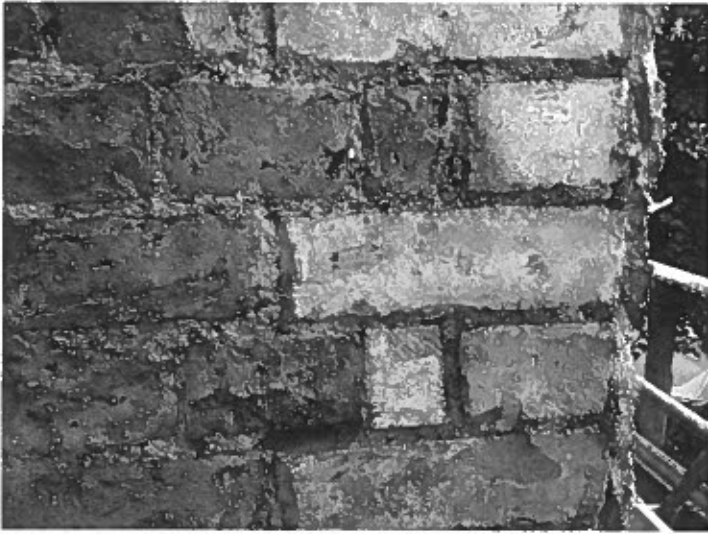
test panel34.JPG



test panel35.JPG



render removal36.jpg



render removal37.jpg



render removal38.jpg