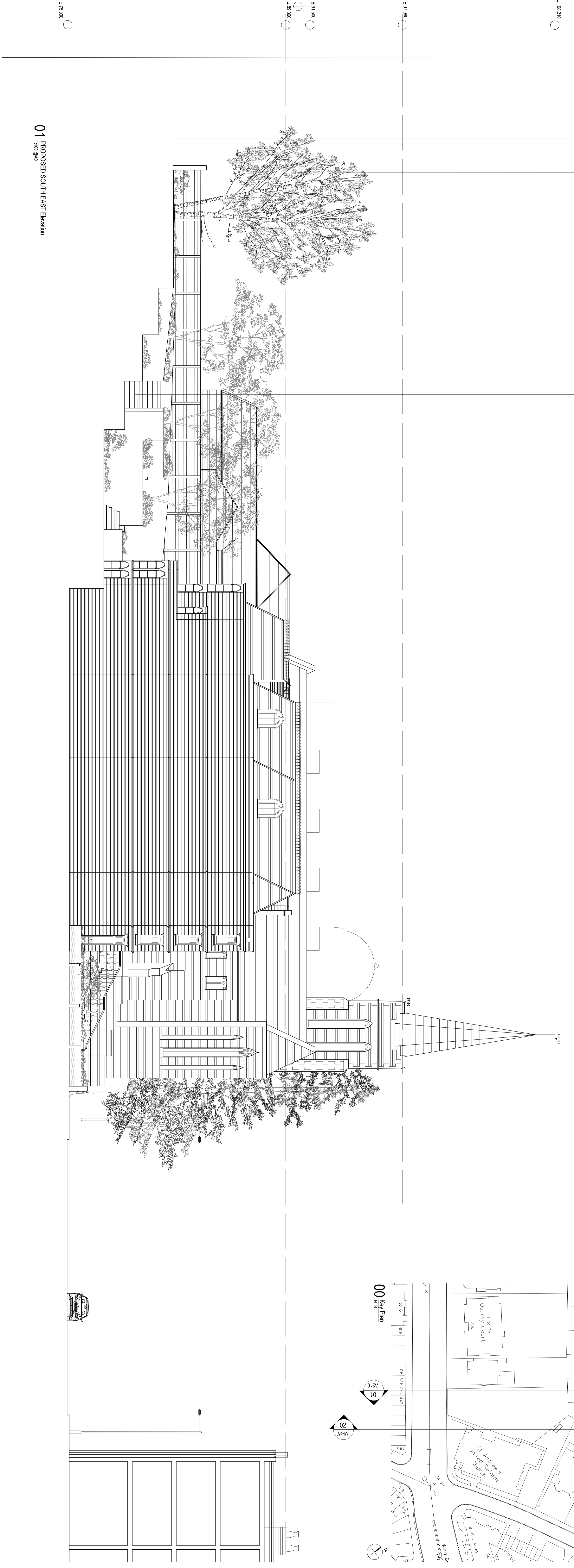


LEVEL OF REAR OF GARDEN RETAINED AT EXISTING LEVEL TO PROTECT EXISTING TREES

POSITION OF TREES 13, 15, 17 AND T11 TO BE RETAINED IN LINE WITH LANDSCAPE OFFICER KEVIN FISHER'S COMMENTS

GARDEN RELANDSCAPED IN ORDER TO PROTECT EXISTING TREES AT THE REAR OF THE SITE

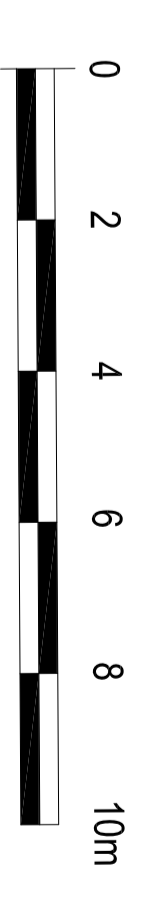


RETAINING WALL AT BOUNDARY STEPPED IN TO PROTECT OFFSITE TREE

GARDEN RELANDSCAPED IN ORDER TO PROTECT EXISTING TREES AT THE REAR OF THE SITE

RETAINING WALL AT BOUNDARY STEPPED IN TO PROTECT OFFSITE TREE

POSITION OF TREES 13, 15, 17 AND T11 TO BE RETAINED IN LINE WITH LANDSCAPE OFFICER KEVIN FISHER'S COMMENTS



PLANNING APPLICATION

01	2024/11	PLANNING SUBMISSION	SR	JP
02	02/2025	EXHIBITION PREPARED	FR	JP
03	02/2025	EXHIBITION PLAN		
04	07/2025	PLANNING APPLICATION	JS	JP
		Issues and Resolutions		By: Check

FINCHLEY ROAD Historic Scheme

PARRITT LENG

5 Riverside Way, Finchley, London N12 6JG
 Tel: 020 7729 9348
 Fax: 020 7729 9349

All drawings shall be submitted to the relevant authority for approval. Our drawings are for the use of the client only and are not to be used for any other purpose without our written consent.

Project Name: FINCHLEY ROAD
 Project Number: 124
 Description: PROPOSED ELEVATIONS

Design File: A210-000
 Scale: 1:500 @ A1
 1:200 @ A3

03
 A-210
 REVISIONS