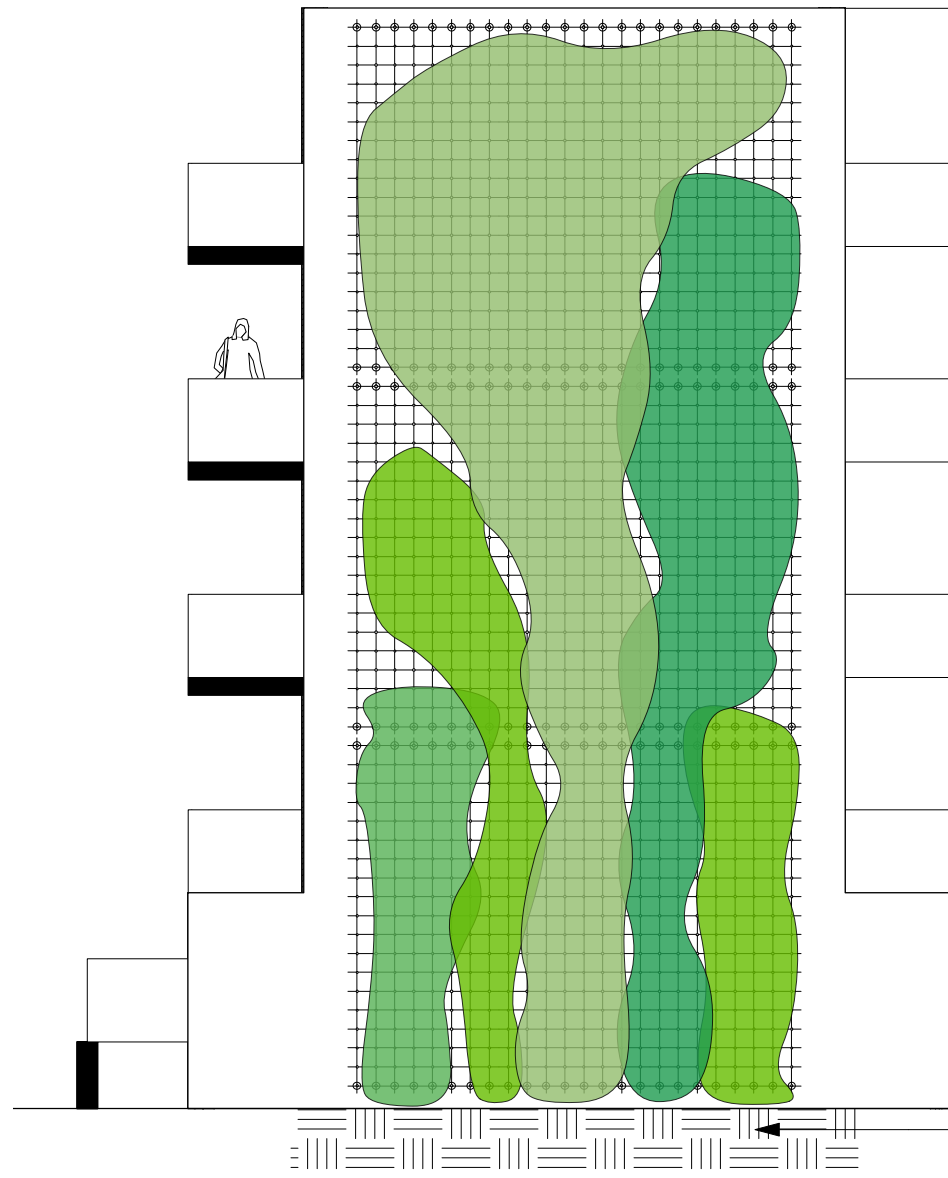


West Elevation - Strained Wiring System
Scale 1:100

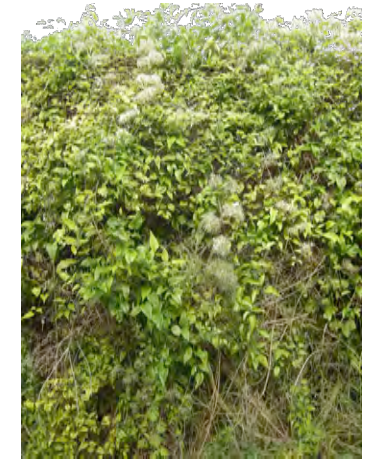


West Elevation - Strained Wiring System showing planting
Scale 1:100

Min. 800mm topsoil



Lonicera periclymenum.
Deciduous twining climber with
fragrant flowers in summer.



Clematis vitalba. Deciduous
twining climber with small white
flowers in spring.



Parthenocissus. Deciduous self
clinging climber. Leaves turn
red in autumn before they fall.



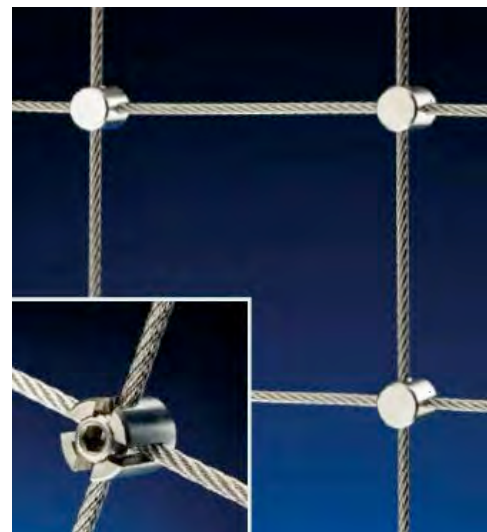
Jasminum officinale. Deciduous
twining climber. Fragrant white
flowers in summer.

Climbers

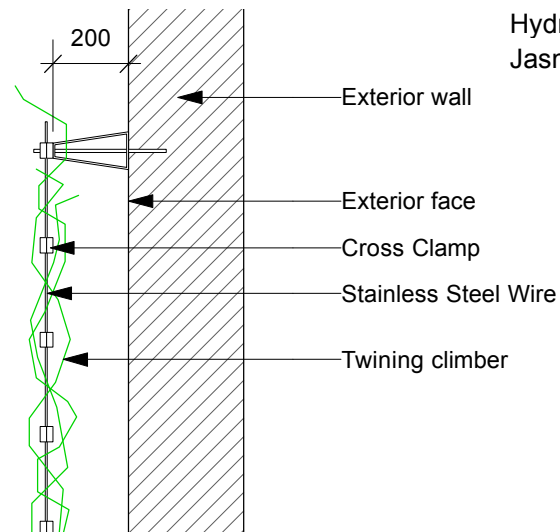
Name	Height cm	Cont size	Spec	No. breaks	Cane	Spacing
<i>Clematis vitalba</i>	150-200	10L	Sev. shoots	3	yes	0.5/linm
<i>Parthenocissus quinquefolia</i>	150-200	10L	Sev. shoots	3	yes	0.5/linm
<i>Lonicera periclymenum</i>	150-200	10L	Sev. shoots	3	yes	0.5/linm
<i>Hedera colchica</i>	150-200	10L	Sev. shoots	3	yes	0.5/linm
<i>Hydrangea petiolaris</i>	150-200	10L	Sev. shoots	3	yes	0.5/linm
<i>Jasminum officinale</i>	150-200	10L	Sev. shoots	3	yes	0.5/linm



Jakob Stainless Steel Wiring System or
similar approved.
Showing Spacer Basket for Wire Rope
Guides.



Jakob Stainless Steel Wiring System or
similar approved.
Showing Cross Clamp.



Sketch Section through Wiring System
Scale 1:20

Note:
Fixings into external walls to be
co-ordinated with WTA prior to final design.

Davis Landscape Architecture
23 Empress Street, London, SE17 3HH
020 7277 1035
mail@davisla.com

Client
Iverson Road Ltd

Job Title
Iverson Road

Drawing Title
Green Wall Sketch

Scale : as shown Drawn DB

Date : 24/05/2013

Drawing No. : L0265SK06 Rev. : B