
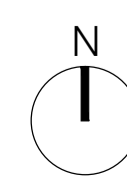
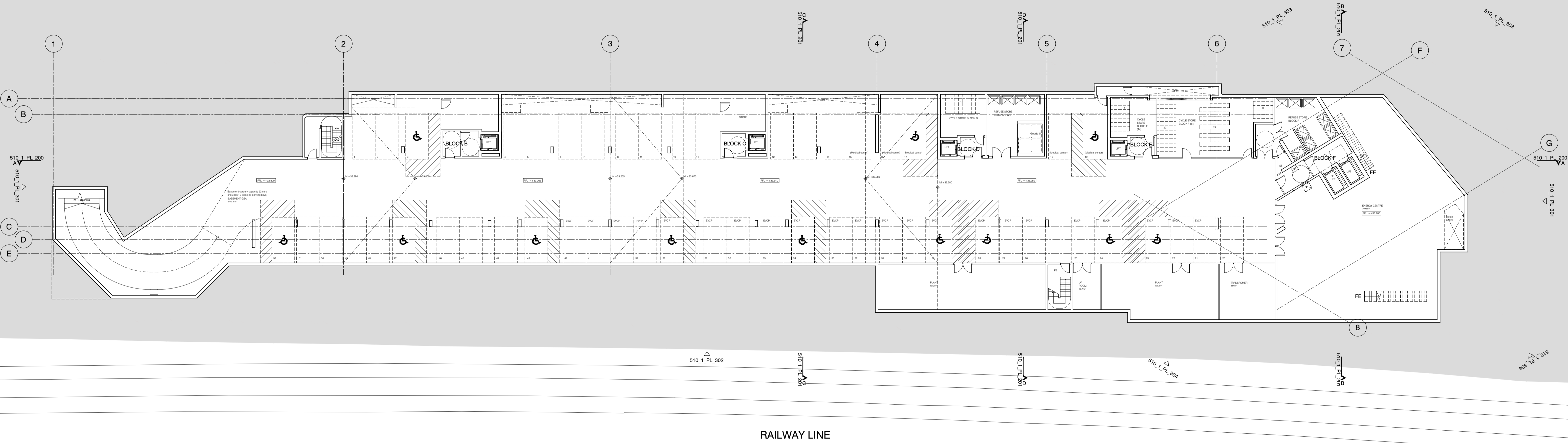


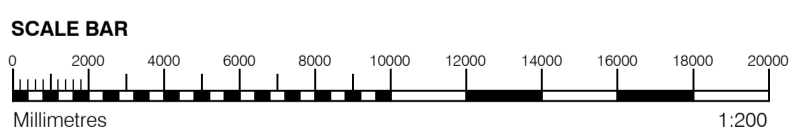
| | | | | |
|-----|----------|--|----|-----|
| B | 04.10.13 | Concierge amendments, FE & levels | BM | DPD |
| A | 30.08.13 | Drawing amended and issued to design team for comment. | RL | DPD |
| rev | date | description | dm | aut |

| | | | | | |
|--|-----------------------------------|---|-------------|--------------|------------|
| PLANNING | | | | | |
| Dispeker Wharf 38 Graham Street London N1 8JX | | | | | |
|  PTEa <small>POLLARD THOMAS EDWARDS architects</small> | | | | | |
| t: 020 7336 7777 f: 020 7336 0770 | | w: www.ptea.co.uk e: forename.surname@ptea.co.uk | | | |
| project | ABBEY AREA REGENERATION - PHASE 1 | job no. | 12_510 | drawn | BM |
| location | LONDON | audited | DPD | scale | 1:500 @ A1 |
| date | JUL 13 | date | | date | |
| drawing title | GENERAL ARRANGEMENT SITE PLAN | | drawing no. | 510_1_PL_001 | rev |
| | | | | | B |





RAILWAY LINE



GENERAL NOTES

- This drawing is copyright of PTE architects
- Use figured dimensions only. DO NOT SCALE.
- All dimensions are in millimetres unless noted otherwise
- All levels are in metres above ordnance datum unless noted otherwise
- This drawing must be read in conjunction with all other relevant drawings and specifications from the Architect and other consultants

NOTES

- All setting out to be confirmed on site prior to construction - any discrepancy must be immediately reported to the Architect.

MATERIAL KEY

A - Brick work type 1: TYPE TO BE AGREED, stretcher bond brickwork with Cemex London White mortar or similar. Openings to have a deep brick reveal (approx 225mm unless stated otherwise).

B - Brick work type 2: TYPE TO BE AGREED but darker than Type 1, stretcher bond brickwork with Cemex London White mortar or similar. Allow for darker mortar to recessed brick walls. Openings to have a deep brick reveal (approx 225mm unless stated otherwise).

C - Glazed brickwork: TYPE TO BE AGREED, stack bonded, to Block F recessed balconies. Soffits to be brick slips (same brick specification as recessed walls), also stack bonded.

D - Metal panel: bronze effect panels with hidden fixings and minimal joints.

E - Shop front frameless glass curtain walling with 75mm aluminum capping at base, bronze effect aluminum framed double or triple glazed doors to match.

F - Windows / doors: bronze effect aluminum framed double or triple glazed units (manufacturer to be agreed).

G - Canopies: Pre-formed metal boxed canopy in bronze metallic finish with hidden structure and integral lighting.

H - Perforated metal balustrade or privacy screen: perforated metal (bronze metallic finish) supported off PPC coated frame with hidden fixings and minimal joints - allow for non-uniform setting out of perforations - details to be agreed.

I - Metal Railing Balustrade: formed from PPC vertical flats (approx 65 x 8mm)

J - Metal Railing Balustrade: formed from PPC vertical flats (approx 65 x 8mm) extending to balcony edge with metal plate fascia fixed to balcony edge

K - Precast concrete or stone coping to parapet wall - allow for reinforcement back to structure.

L - Glass balustrade: frameless glass with no visible fixings.

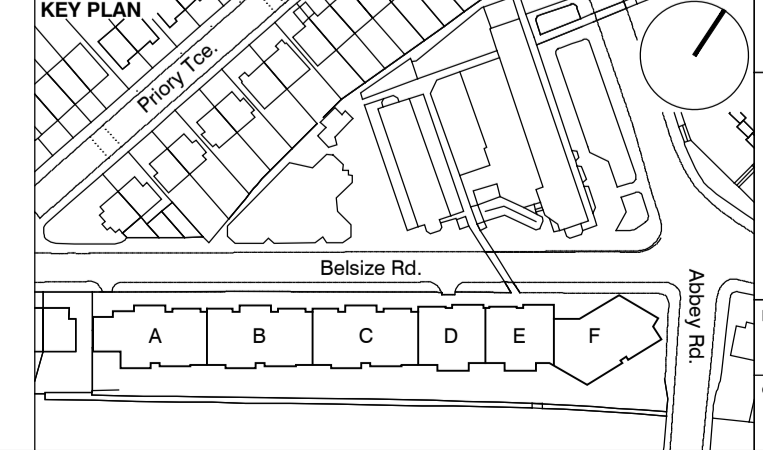
M - Residential Entrances: Glazed brickwork - mixed colours TYPES TO BE AGREED, stack bonded. Through-the-wall mailbox system (DAD or similar) with one-piece front plate with integrated door entry system - Colour to be agreed.

N - Hit and miss brickwork wall to basement cycle store - free area to meet ventilation requirements to basement

O - 1.2 m high Fagus sylvatica (beech) instant hedge planted in a double staggered row

P - Reconstituted Stone on fixing ancon bracket to form architrave detail to concierge/supermarket/retail entrances

Q - Aluminium PPC loured doors/panels to refuse store/car park ramp/fire exits



| | | | | |
|-----|----------|--|----|-----|
| rev | date | description | dm | aut |
| B | 04.10.13 | Block F layout updates / parking & cycling spaces | BM | DPD |
| A | 30.08.13 | Drawing amended and issued to design team for comment. | RL | DPD |

PLANNING

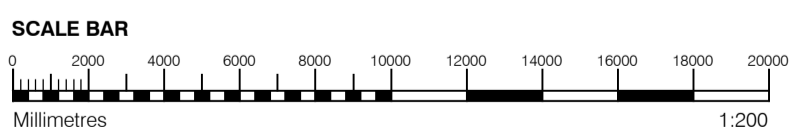
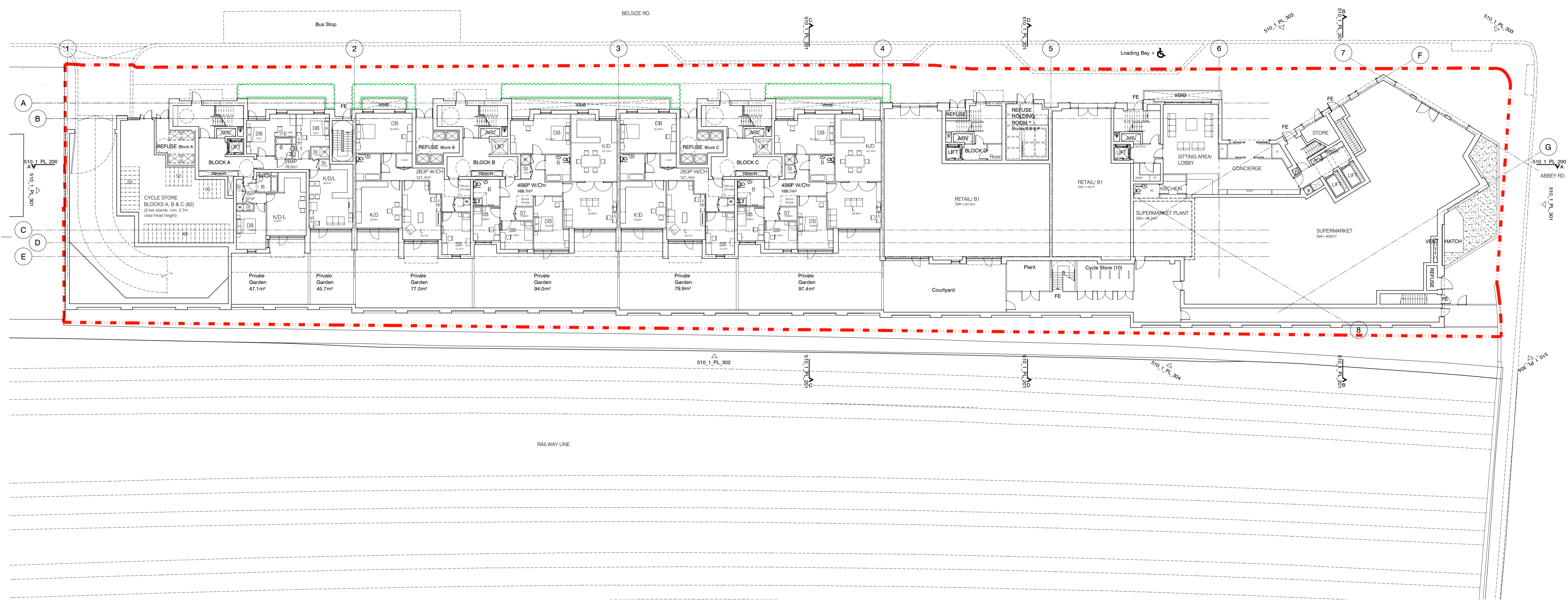
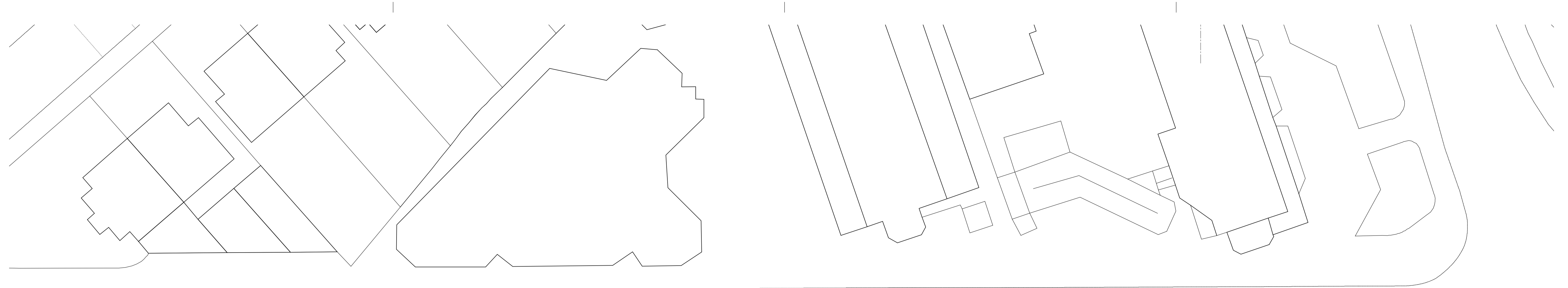
Dispeker Wharf
38 Graham Street
London N1 8JX

t: 020 7336 7777 w: www.ptea.co.uk
f: 020 7336 0770 e: forename.surname@ptea.co.uk

project: ABBEY AREA REGENERATION - PHASE1
job no.: 12_510
drawn: BM
audited: DPD
scale: 1:200 @ A1
date: JUL 13

sheet title: GENERAL ARRANGEMENT BASEMENT FLOOR PLAN
sheet no.: 510_1_PL_099
rev: B

PTEa
POLLARD THOMAS EDWARDS architects



GENERAL NOTES

- This drawing is copyright of PTE architects
- Use figured dimensions only. DO NOT SCALE.
- All dimensions are in millimetres unless noted otherwise
- All levels are in metres above ordnance datum unless noted otherwise
- This drawing must be read in conjunction with all other relevant drawings and specifications from the Architect and other consultants

NOTES

- All setting out to be confirmed on site prior to construction - any discrepancy must be immediately reported to the Architect.

MATERIAL KEY

A - Brick work type 1: TYPE TO BE AGREED, stretcher bond brickwork with Cemex London White mortar or similar. Openings to have a deep brick reveal (approx 225mm unless stated otherwise).

B - Brick work type 2: TYPE TO BE AGREED but darker than Type 1, stretcher bond brickwork with Cemex London White mortar or similar. Allow for darker mortar to recessed brick walls. Openings to have a deep brick reveal (approx 225mm unless stated otherwise).

C - Glazed brickwork: TYPE TO BE AGREED, stack bonded, to Block F recessed balconies. Soffits to be brick slips (same brick specification as recessed walls), also stack bonded.

D - Metal panel: bronze effect panels with hidden fixings and minimal joints.

E - Shop front frameless glass curtain walling with 75mm aluminum capping at base, bronze effect aluminum framed double or triple glazed doors to match.

F - Windows / doors: bronze effect aluminum framed double or triple glazed units (manufacturer to be agreed).

G - Canopies: Pre-formed metal boxed canopy in bronze metallic finish with hidden structure and integral lighting.

H - Perforated metal balustrade or privacy screen: perforated metal (bronze metallic finish) supported off PPC coated frame with hidden fixings and minimal joints - allow for non-uniform setting out of perforations - details to be agreed.

I - Metal Railing Balustrade: formed from PPC vertical flats (approx 65 x 8mm)

J - Metal Railing Balustrade: formed from PPC vertical flats (approx 65 x 8mm) extending to balcony soffit with metal plate fascia fixed to balcony edge

K - Precast concrete or stone coping to parapet wall - allow for reinforcement back to structure.

L - Glass balustrade: frameless glass with no visible fixings.

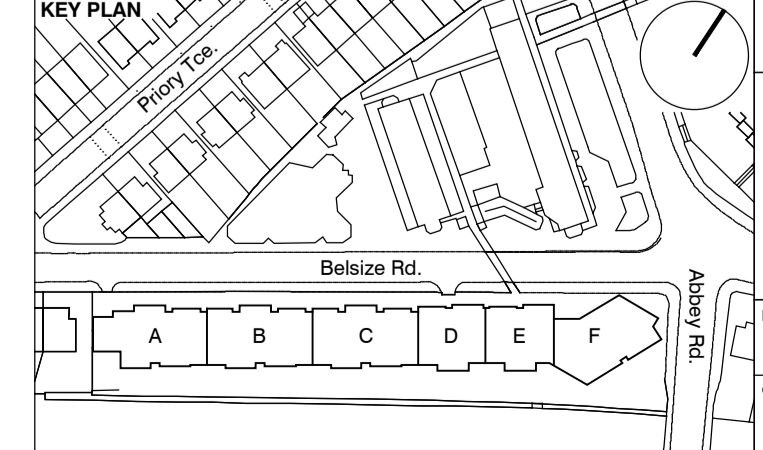
M - Residential Entrances: Glazed brickwork - mixed colours TYPES TO BE AGREED, stack bonded. Through-the-wall mailbox system (DAD or similar) with one-piece front plate with integrated door entry system - Colour to be agreed.

N - Hit and miss brickwork wall to basement cycle store - free area to meet ventilation requirements to basement

O - 1.2 m high Fagus sylvatica (beech) instant hedge planted in a double staggered row

P - Reconstituted Stone on fixing ancon bracket to form architrave detail to concierge/supermarket/retail entrances

Q - Aluminium PPC loured doors/panels to refuse store/car park ramp/fire exits



| | | | | |
|-----|----------|--|----|-----|
| rev | date | description | dm | aut |
| B | 04.10.13 | Block F layout updates / Concierge & entrance updates | BM | DPD |
| A | 30.08.13 | Drawing amended and issued to design team for comment. | RL | DPD |

drawing status

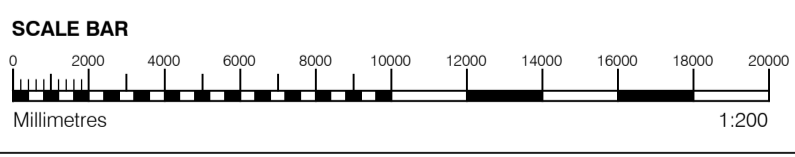
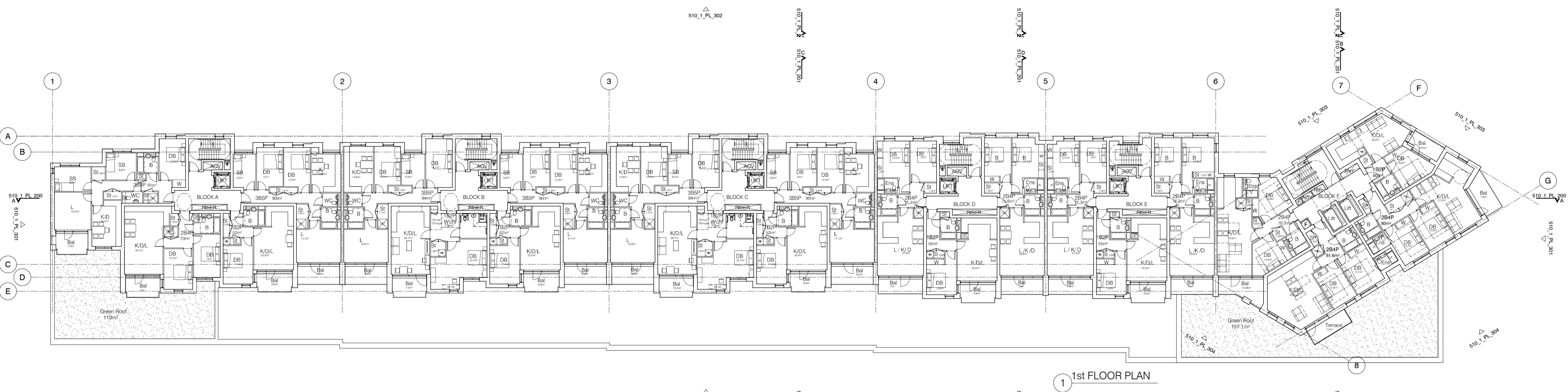
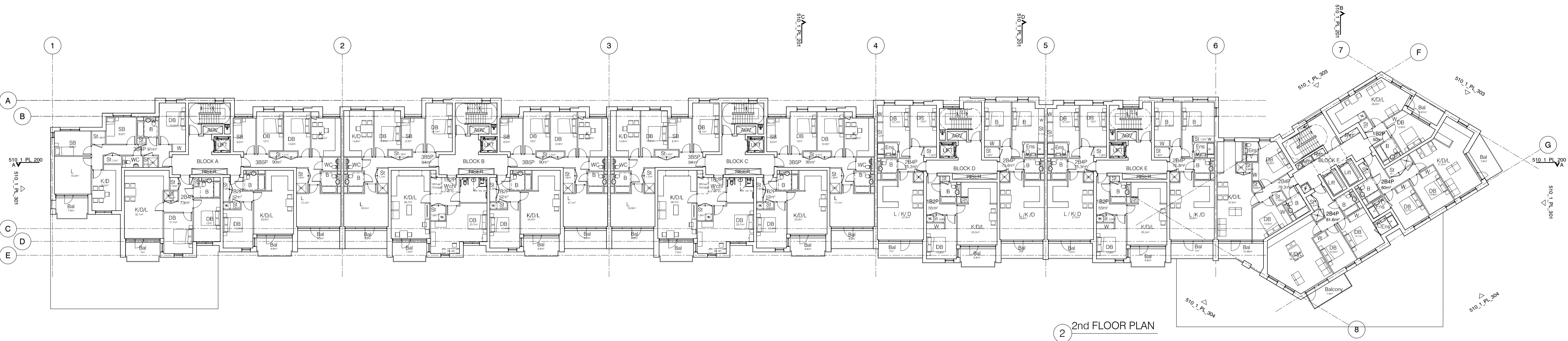
PLANNING

Dispeker Wharf
38 Graham Street
London N1 8JX

t: 020 7336 7777 w: www.ptea.co.uk
f: 020 7336 0770 e: foreshname.surname@ptea.co.uk

project: ABBEY AREA REGENERATION - PHASE 1
job no.: 12_510
drawn: PT
audited: DPD
scale: 1:200 @ A1
date: JUL 13

sheet no.: GENERAL ARRANGEMENT
GROUND FLOOR PLAN
510_1_PL_100
rev: B



GENERAL NOTES

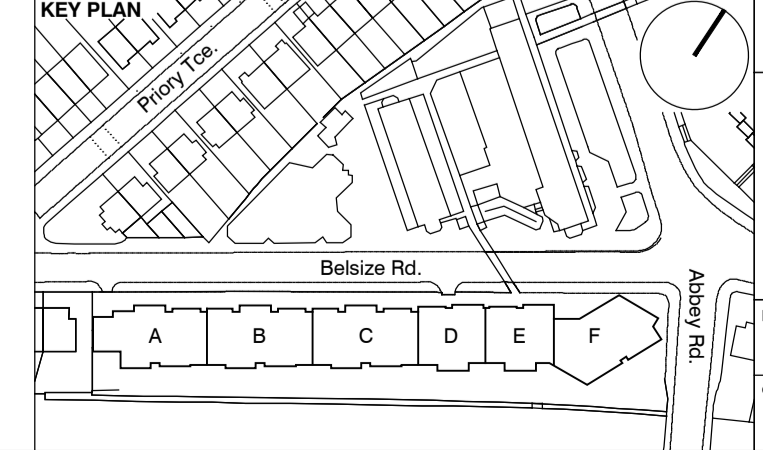
- This drawing is copyright of PTE architects
- Use figured dimensions only. DO NOT SCALE.
- All dimensions are in millimetres unless noted otherwise
- All levels are in metres above ordnance datum unless noted otherwise
- This drawing must be read in conjunction with all other relevant drawings and specifications from the Architect and other consultants

NOTES

- All setting out to be confirmed on site prior to construction - any discrepancy must be immediately reported to the Architect.

MATERIAL KEY

- A** - Brick work type 1: TYPE TO BE AGREED, stretcher bond brickwork with Cemex London White mortar or similar. Openings to have a deep brick reveal (approx 225mm unless stated otherwise).
- B** - Brick work type 2: TYPE TO BE AGREED but darker than Type 1, stretcher bond brickwork with Cemex London White mortar or similar. Allow for darker mortar to recessed brick walls. Openings to have a deep brick reveal (approx 225mm unless stated otherwise).
- C** - Glazed brickwork: TYPE TO BE AGREED, stack bonded, to Block F recessed balconies. Soffits to be brick slips (same brick specification as recessed walls), also stack bonded.
- D** - Metal panel: bronze effect panels with hidden fixings and minimal joints.
- E** - Shop front frameless glass curtain walling with 75mm aluminum capping at base, bronze effect aluminum framed double or triple glazed doors to match.
- F** - Windows / doors: bronze effect aluminum framed double or triple glazed units (manufacturer to be agreed).
- G** - Canopies: Pre-formed metal boxed canopy in bronze metallic finish with hidden structure and integral lighting.
- H** - Perforated metal balustrade or privacy screen; perforated metal (bronze metallic finish) supported off PPC coated frame with hidden fixings and minimal joints - allow for non-uniform setting out of perforations - details to be agreed.
- I** - Metal Railing Balustrade: formed from PPC vertical flats (approx 65 x 8mm)
- J** - Metal Railing Balustrade: formed from PPC vertical flats (approx 65 x 8mm) extending to balcony soffit with metal plate fascia fixed to balcony edge
- K** - Precast concrete or stone coping to parapet wall - allow for reinforcement back to structure.
- L** - Glass balustrade: frameless glass with no visible fixings.
- M** - Residential Entrances: Glazed brickwork - mixed colours TYPES TO BE AGREED, stack bonded. Through-the-wall mailbox system (DAD or similar) with one-piece front plate with integrated door entry system - Colour to be agreed.
- N** - Hit and miss brickwork wall to basement cycle store - free area to meet ventilation requirements to basement
- O** - 1.2 m high Fagus sylvatica (beech) instant hedge planted in a double staggered row
- P** - Reconstituted Stone on fixing ancon bracket to form architrave detail to concierge/supermarket/retail entrances
- Q** - Aluminium PPC loured doors/panels to refuse store/car park ramp/fire exits



| rev | date | description | dm | aut |
|-----|----------|--|----|-----|
| B | 04.10.13 | Balcony area in Block A revised | BM | DPD |
| A | 30.08.13 | Drawing amended and issued to design team for comment. | RL | DPD |

PLANNING

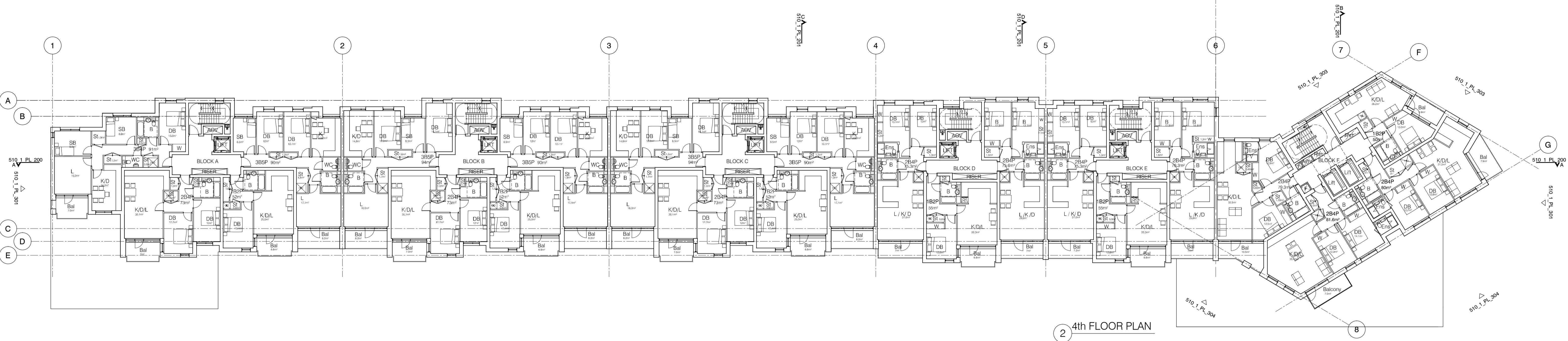
Dispeker Wharf
38 Graham Street
London N1 8JX

t: 020 7336 7777 w: www.ptea.co.uk
f: 020 7336 0770 e: foreshame.surname@ptea.co.uk

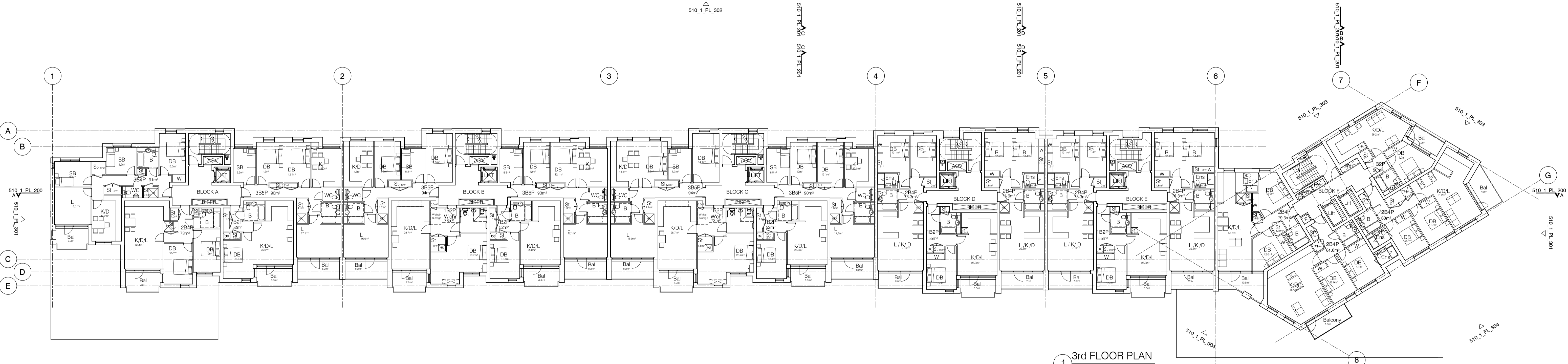
project: ABBEY AREA REGENERATION - PHASE 1
drawing: GENERAL ARRANGEMENT 1st & 2nd FLOOR PLANS

job no. 12_510
drawn BM
audited DPD
scale 1:200 @ A1
date JUL 13

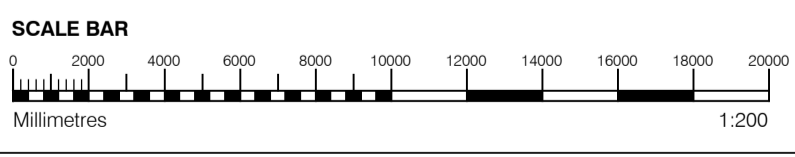
fig. no. 510_1_PL_101
rev. B



2 4th FLOOR PLAN



1 3rd FLOOR PLAN



GENERAL NOTES

- This drawing is copyright of PTE architects
- Use figured dimensions only. DO NOT SCALE.
- All dimensions are in millimetres unless noted otherwise
- All levels are in metres above ordnance datum unless noted otherwise
- This drawing must be read in conjunction with all other relevant drawings and specifications from the Architect and other consultants

NOTES

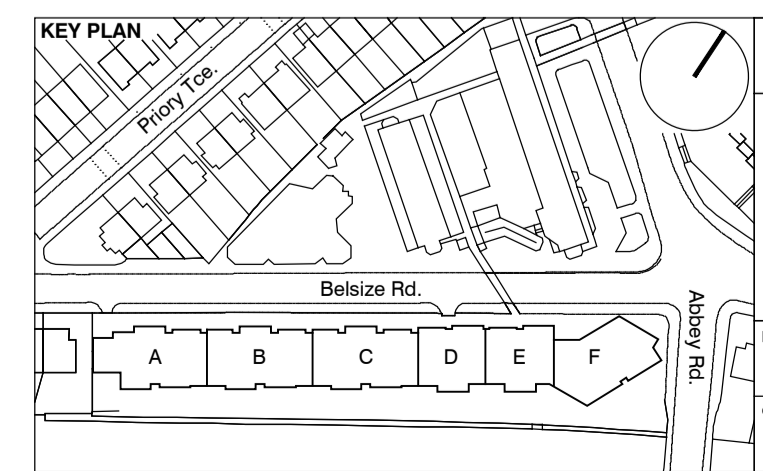
- All setting out to be confirmed on site prior to construction - any discrepancy must be immediately reported to the Architect.

MATERIAL KEY

- A** - Brick work type 1: TYPE TO BE AGREED, stretcher bond brickwork with Cemex London White mortar or similar. Openings to have a deep brick reveal (approx 225mm unless stated otherwise).
- B** - Brick work type 2: TYPE TO BE AGREED but darker than Type 1, stretcher bond brickwork with Cemex London White mortar or similar. Allow for darker mortar to recessed brick walls. Openings to have a deep brick reveal (approx 225mm unless stated otherwise).
- C** - Glazed brickwork: TYPE TO BE AGREED, stack bonded, to Block F recessed balconies. Soffits to be brick slips (same brick specification as recessed walls), also stack bonded.
- D** - Metal panel: bronze effect panels with hidden fixings and minimal joints.

- E** - Shop front frameless glass curtain walling with 75mm aluminum capping at base, bronze effect aluminum framed double or triple glazed doors to match.
- F** - Windows / doors: bronze effect aluminum framed double or triple glazed units (manufacturer to be agreed).
- G** - Canopies: Pre-formed metal boxed canopy in bronze metallic finish with hidden structure and integral lighting.
- H** - Perforated metal balustrade or privacy screen; perforated metal (bronze metallic finish) supported off PPC coated frame with hidden fixings and minimal joints - allow for non-uniform setting out of perforations - details to be agreed.
- I** - Metal Railing Balustrade: formed from PPC vertical flats (approx 65 x 8mm)
- J** - Metal Railing Balustrade: formed from PPC vertical flats (approx 65 x 8mm) extending to balcony soffit with metal plate fascia fixed to balcony edge
- K** - Precast concrete or stone coping to parapet wall - allow for reinforcement back to structure.
- L** - Glass balustrade: frameless glass with no visible fixings.

- M** - Residential Entrances: Glazed brickwork - mixed colours TYPES TO BE AGREED, stack bonded. Through-the-wall mailbox system (DAD or similar) with one-piece front plate with integrated door entry system - Colour to be agreed.
- N** - Hit and miss brickwork wall to basement cycle store - free area to meet ventilation requirements to basement
- O** - 1.2 m high Fagus sylvatica (beech) instant hedge planted in a double staggered row
- P** - Reconstituted Stone on fixing ancon bracket to form architrave detail to concierge/supermarket/retail entrances
- Q** - Aluminium PPC loured doors/panels to refuse store/car park ramp/fire exits



| rev | date | description | dm | aut |
|-----|----------|--|----|-----|
| B | 04.10.13 | Balcony area in Block A revised. | BM | DPD |
| A | 30.08.13 | Drawing amended and issued to design team for comment. | RL | DPD |

PLANNING

Dispeker Wharf
38 Graham Street
London N1 8JX

t: 020 7336 7777 w: www.ptea.co.uk
f: 020 7336 0770 e: foreshame.surname@ptea.co.uk

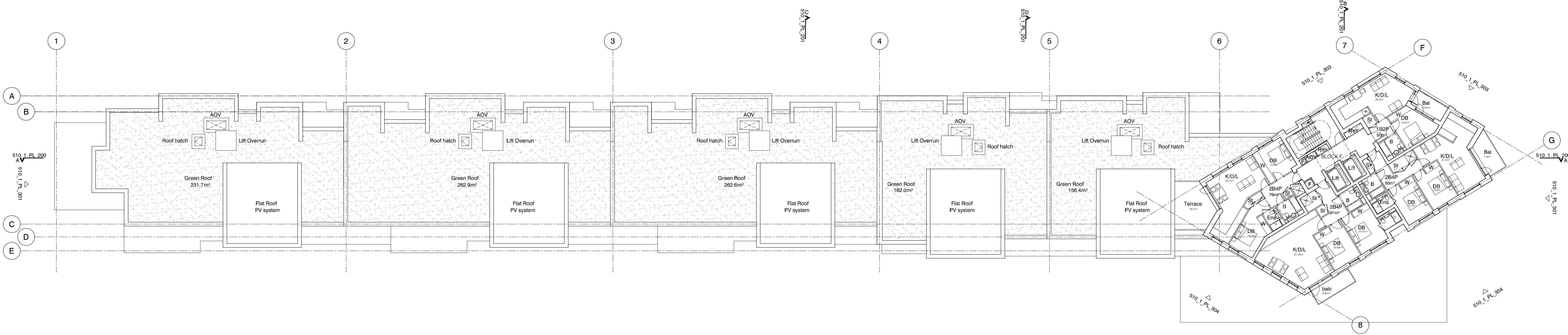
project: ABEY AREA REGENERATION - PHASE 1
location: LONDON

job no. 12_510
drawn BM
audited DPD
scale 1:200 @ A1
date JUL 13

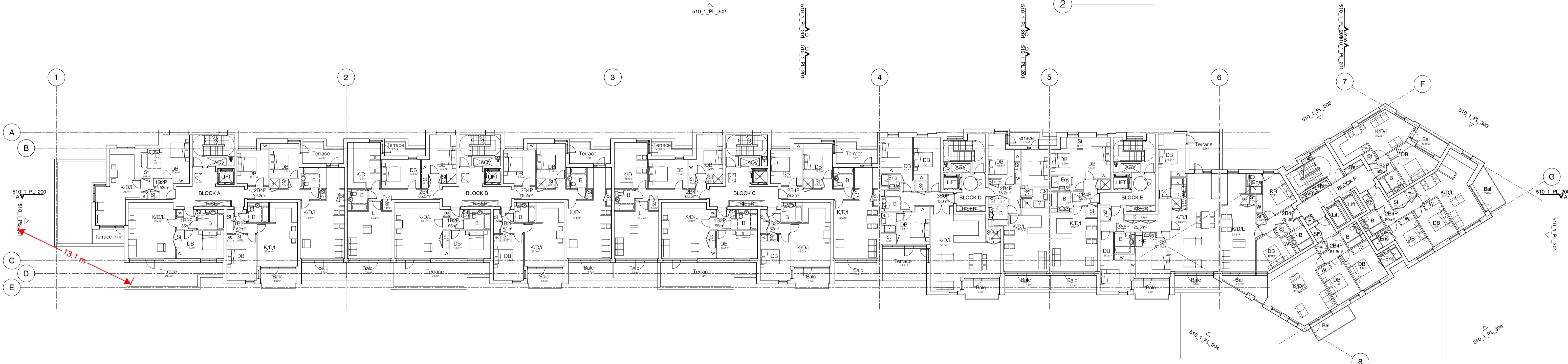
drawing title: GENERAL ARRANGEMENT
3rd & 4th FLOOR PLANS

fig. no. 510_1_PL_102
rev. B

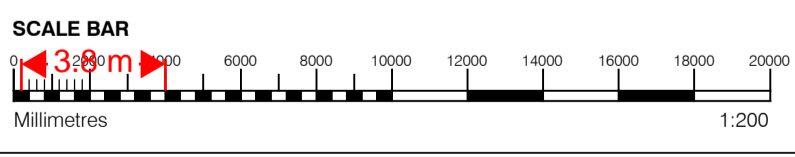




2 6th FLOOR PLAN



1 5th FLOOR PLAN



GENERAL NOTES

- This drawing is copyright of PTE architects
- Use figured dimensions only. DO NOT SCALE.
- All dimensions are in millimetres unless noted otherwise
- All levels are in metres above ordnance datum unless noted otherwise
- This drawing must be read in conjunction with all other relevant drawings and specifications from the Architect and other consultants

NOTES

- All setting out to be confirmed on site prior to construction - any discrepancy must be immediately reported to the Architect.

MATERIAL KEY

A - Brick work type 1: TYPE TO BE AGREED, stretcher bond brickwork with Cemex London White mortar or similar. Openings to have a deep brick reveal (approx 225mm unless stated otherwise).

B - Brick work type 2: TYPE TO BE AGREED but darker than Type 1, stretcher bond brickwork with Cemex London White mortar or similar. Allow for darker mortar to recessed brick walls. Openings to have a deep brick reveal (approx 225mm unless stated otherwise).

C - Glazed brickwork: TYPE TO BE AGREED, stack bonded, to Block F recessed balconies. Soffits to be brick slips (same brick specification as recessed walls), also stack bonded.

D - Metal panel: bronze effect panels with hidden fixings and minimal joints.

E - Shop front frameless glass curtain walling with 75mm aluminum capping at base, bronze effect aluminum framed double or triple glazed doors to match.

F - Windows / doors: bronze effect aluminum framed double or triple glazed units (manufacturer to be agreed).

G - Canopies: Pre-formed metal boxed canopy in bronze metallic finish with hidden structure and integral lighting.

H - Perforated metal balustrade or privacy screen: perforated metal (bronze metallic finish) supported off PPC coated frame with hidden fixings and minimal joints - allow for non-uniform setting out of perforations - details to be agreed.

I - Metal Railing Balustrade: formed from PPC vertical flats (approx 65 x 8mm)

J - Metal Railing Balustrade: formed from PPC vertical flats (approx 65 x 8mm) extending to balcony soffit with metal plate fascia fixed to balcony edge

K - Precast concrete or stone coping to parapet wall - allow for reinforcement back to structure.

L - Glass balustrade: frameless glass with no visible fixings.

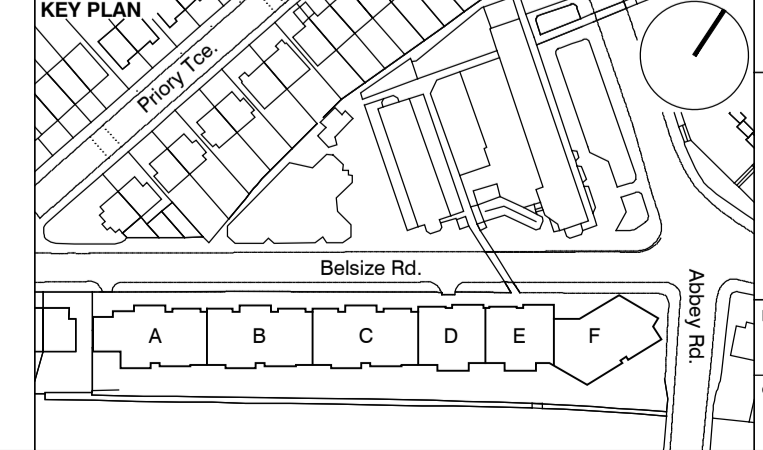
M - Residential Entrances: Glazed brickwork - mixed colours TYPES TO BE AGREED, stack bonded. Through-the-wall mailbox system (DAD or similar) with one-piece front plate with integrated door entry system - Colour to be agreed.

N - Hit and miss brickwork wall to basement cycle store - free area to meet ventilation requirements to basement

O - 1.2 m high Fagus sylvatica (beech) instant hedge planted in a double staggered row

P - Reconstituted Stone on fixing ancon bracket to form architrave detail to concierge/supermarket/retail entrances

Q - Aluminium PPC loured doors/panels to refuse store/car park ramp/fire exits



| | | | | |
|-----|----------|--|----|-----|
| rev | date | description | dm | aut |
| B | 04.10.13 | Windows amendments in Southern Elevation | BM | DPD |
| A | 30.08.13 | Drawing amended and issued to design team for comment. | RL | DPD |

PLANNING

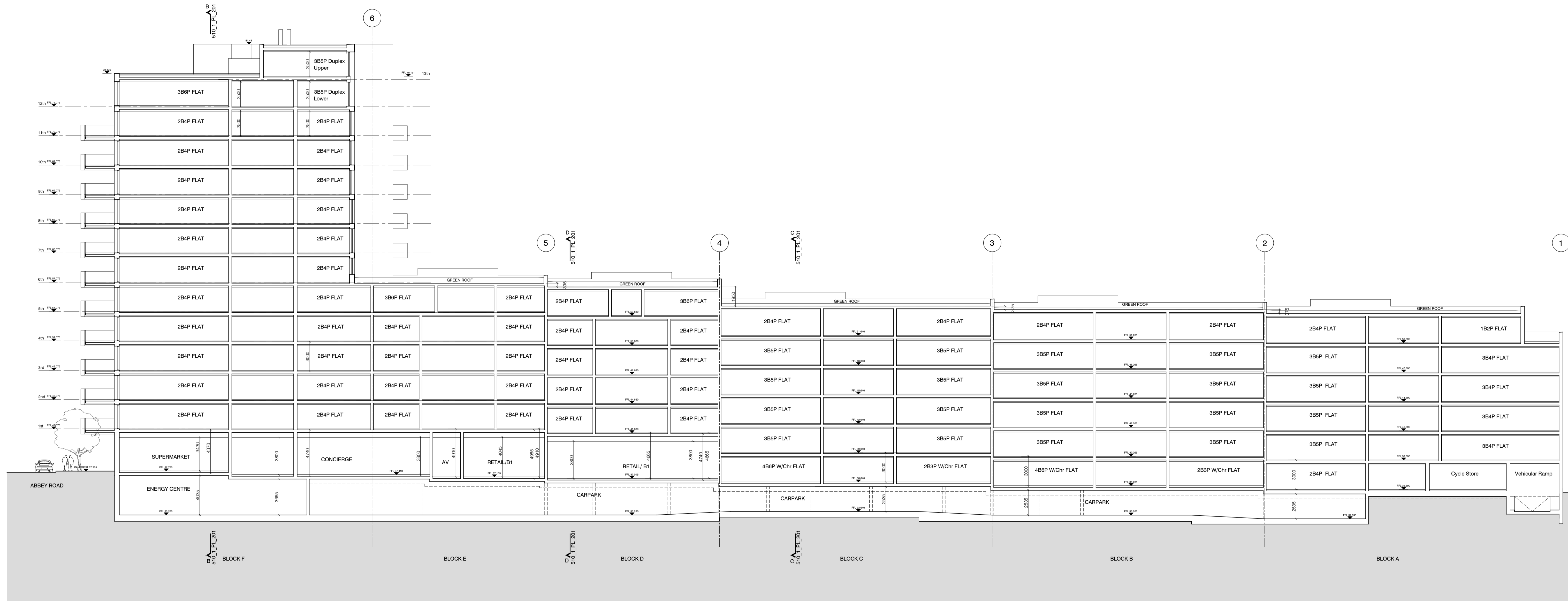
Dispeker Wharf
38 Graham Street
London N1 8JX

t: 020 7336 7777 w: www.ptea.co.uk
f: 020 7336 0770 e: foreshame.surname@ptea.co.uk

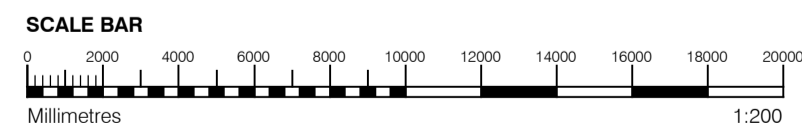
project: ABBEY AREA REGENERATION - PHASE 1
drawing title: GENERAL ARRANGEMENT 5th & 6th FLOOR PLANS

job no. 12_510
drawn PT
checked DPD
scale 1:200 @ A1
date JUL 13

fig. no. 510_1_PL_103
rev B

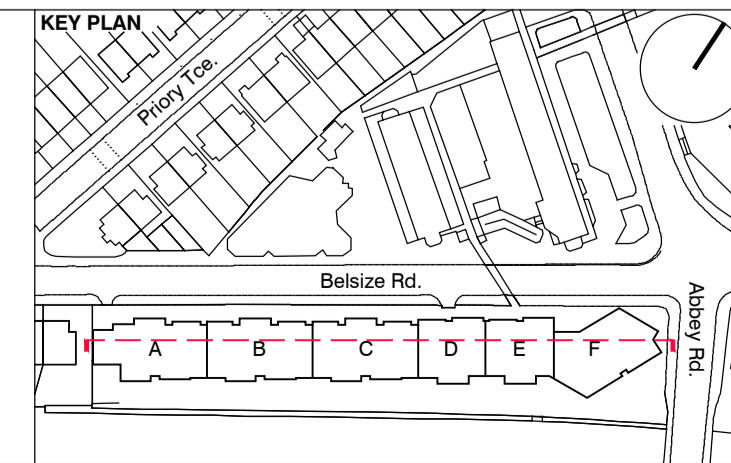


1 SECTION A-A

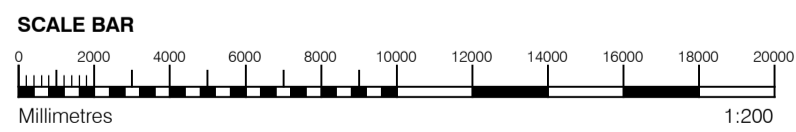


- GENERAL NOTES**
- This drawing is copyright of PTE architects
 - Use figured dimensions only. DO NOT SCALE.
 - All dimensions are in millimetres unless noted otherwise
 - All levels are in metres above ordnance datum unless noted otherwise
 - This drawing must be read in conjunction with all other relevant drawings and specifications from the Architect and other consultants
- NOTES**
- All setting out to be confirmed on site prior to construction - any discrepancy must be immediately reported to the Architect.

- MATERIAL KEY**
- A** - Brick work type 1: TYPE TO BE AGREED, stretcher bond brickwork with Cemex London White mortar or similar. Openings to have a deep brick reveal (approx 225mm unless stated otherwise).
 - B** - Brick work type 2: TYPE TO BE AGREED but darker than Type 1, stretcher bond brickwork with Cemex London White mortar or similar. Allow for darker mortar to recessed brick walls. Openings to have a deep brick reveal (approx 225mm unless stated otherwise).
 - C** - Glazed brickwork: TYPE TO BE AGREED, stack bonded, to Block F recessed balconies. Soffits to be brick slips (same brick specification as recessed walls), also stack bonded.
 - D** - Metal panel: bronze effect panels with hidden fixings and minimal joints.
 - E** - Shop front frameless glass curtain walling with 75mm aluminum capping at base, bronze effect aluminum framed double or triple glazed doors to match.
 - F** - Windows / doors: bronze effect aluminum framed double or triple glazed units (manufacturer to be agreed).
 - G** - Canopies: Pre-formed metal boxed canopy in bronze metallic finish with hidden structure and integral lighting.
 - H** - Perforated metal balustrade or privacy screen: perforated metal (bronze metallic finish) supported off PPC coated frame with hidden fixings and minimal joints - allow for non-uniform setting out of perforations - details to be agreed.
 - I** - Metal Railing Balustrade: formed from PPC vertical flats (approx 65 x 8mm)
 - J** - Metal Railing Balustrade: formed from PPC vertical flats (approx 65 x 8mm) extending to balcony soffit with metal plate fascia fixed to balcony edge
 - K** - Precast concrete or stone coping to parapet wall - allow for reinforcement back to structure.
 - L** - Glass balustrade: frameless glass with no visible fixings.
 - M** - Residential Entrances: Glazed brickwork - mixed colours TYPES TO BE AGREED, stack bonded. Through-the-wall mailbox system (DAD or similar) with one-piece front plate with integrated door entry system - Colour to be agreed.
 - N** - Hit and miss brickwork wall to basement cycle store - free area to meet ventilation requirements to basement
 - O** - 1.2 m high Fagus sylvatica (beech) instant hedge planted in a double staggered row
 - P** - Reconstituted Stone on fixing ancon bracket to form architrave detail to concierge/supermarket/retail entrances
 - Q** - Aluminium PPC loured doors/panels to refuse store/car park ramp/fire exits



| | | | | | | | | | |
|--|----------|--|----------------|---|-----------------------|----------------|-------------------|----------------|-----|
| rev | date | description | drawing status | PLANNING | | | | dm | aut |
| B | 04.10.13 | Issue for information | | | | | | BM | DPD |
| A | 02.09.13 | Drawing amended and issued to design team for comment. | | | | | | RL | DPD |
| project Abbey Area Regeneration-Phase 1 London | | | | job no. 12_510 | drawn PT | checked DPD | scale 1:200@A1 | date JUL 13 | |
| description GENERAL ARRANGEMENT SECTION A-A | | | | rev 1 | title 510_1_PL_200 | rev B | | | |
| contact info t: 020 7336 7777 w: www.ptea.co.uk f: 020 7336 0770 e: foreshane.surname@ptea.co.uk | | | | PTEa POLLARD THOMAS EDWARDS architects | | | | | |



GENERAL NOTES

- This drawing is copyright of PTE architects
- Use figured dimensions only. DO NOT SCALE.
- All dimensions are in millimetres unless noted otherwise
- All levels are in metres above Ordnance datum unless noted otherwise
- This drawing must be read in conjunction with all other relevant drawings and specifications from the Architect and other consultants

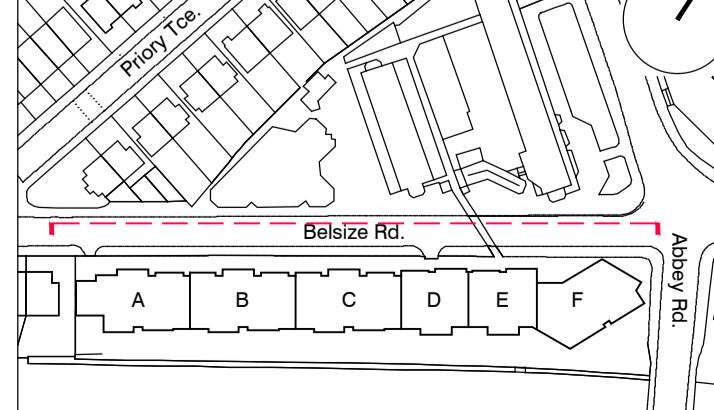
NOTES

- All setting out to be confirmed on site prior to construction - any discrepancy must be immediately reported to the Architect.

MATERIAL KEY

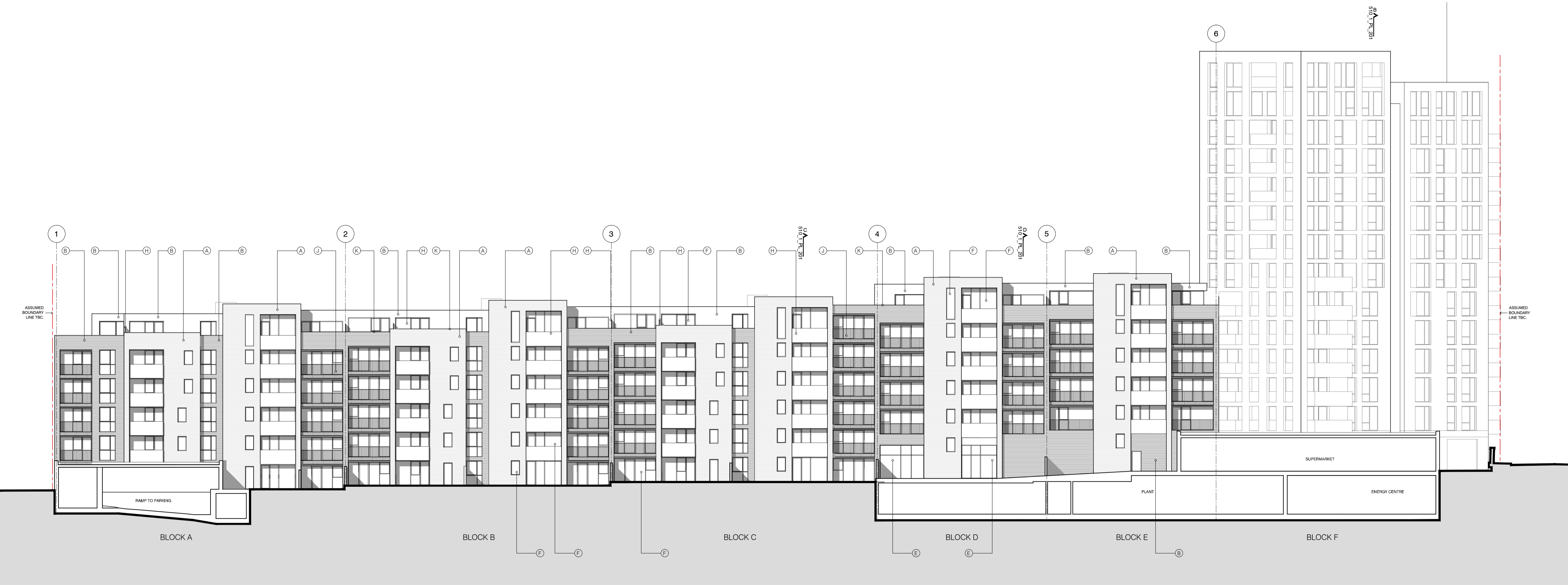
- A** - Brick work type 1: TYPE TO BE AGREED, stretcher bond brickwork with Cemex London White mortar or similar. Openings to have a deep brick reveal (approx 225mm unless stated otherwise).
- B** - Brick work type 2: TYPE TO BE AGREED but darker than Type 1, stretcher bond brickwork with Cemex London White mortar or similar. Allow for darker mortar to recessed brick walls. Openings to have a deep brick reveal (approx 225mm unless stated otherwise).
- C** - Glazed brickwork: TYPE TO BE AGREED, stack bonded, to Block F recessed balconies. Soffits to be brick slips (same brick specification as recessed walls), also stack bonded.
- D** - Metal panel: bronze effect panels with hidden fixings and minimal joints.
- E** - Shop front frameless glass curtain walling with 75mm aluminium capping at base, bronze effect aluminium framed double or triple glazed doors to match.
- F** - Windows / doors: bronze effect aluminium framed double or triple glazed units (manufacturer to be agreed).
- G** - Canopies: Pre-formed metal boxed canopy in bronze metallic finish with hidden structure and integral lighting.
- H** - Perforated metal balustrade or privacy screen: perforated metal (bronze metallic finish) supported off PPC coated frame with hidden fixings and minimal joints - allow for non-uniform setting out of perforations - details to be agreed.
- I** - Metal Railing Balustrade: formed from PPC vertical flats (approx 65 x 8mm)
- J** - Metal Railing Balustrade: formed from PPC vertical flats (approx 65 x 8mm) extending to balcony soffit with metal plate fascia fixed to balcony edge
- K** - Precast concrete or stone coping to parapet wall - allow for reinforcement back to structure.
- L** - Glass balustrade: frameless glass with no visible fixings.
- M** - Residential Entrances: Glazed brickwork - mixed colours TYPES TO BE AGREED, stack bonded. Through-the-wall mailbox system (DAD or similar) with one-piece front plate with integrated door entry system - Colour to be agreed.
- N** - Hit and miss brickwork wall to basement cycle store - free area to meet ventilation requirements to basement
- O** - 1.2 m high Fagus sylvatica (beech) instant hedge planted in a double staggered row
- P** - Reconstituted Stone on fixing ancon bracket to form architrave detail to concierge/supermarket/retail entrances
- Q** - Aluminium PPC louvred doors/panels to refuse store/car park ramp/fire exits

KEY PLAN

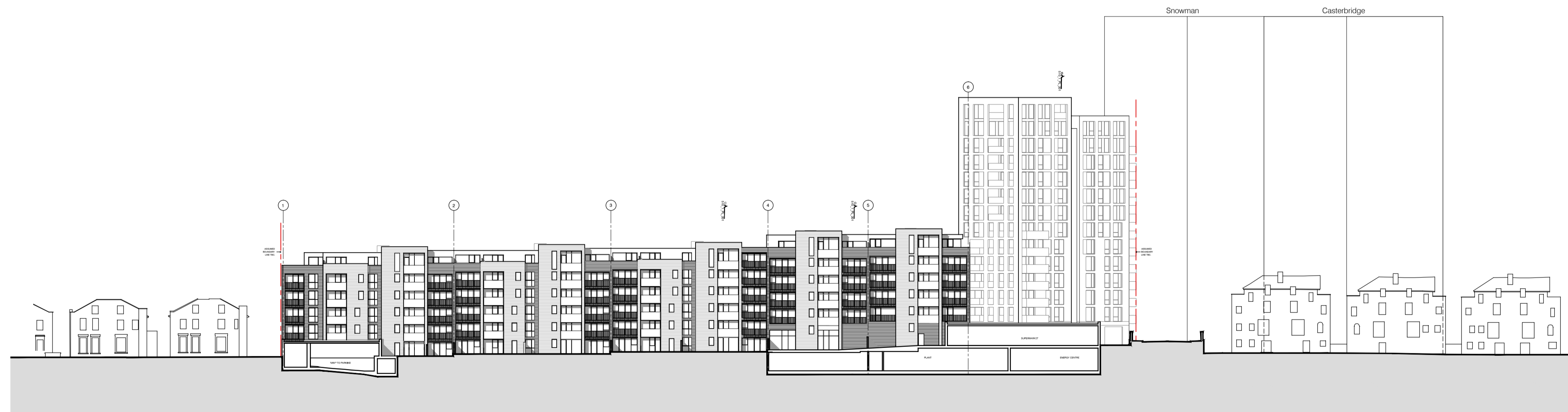


| | | | | |
|--|----------|--|----|-----|
| rev | date | description | dm | aut |
| B | 04.10.13 | 5th floor Windows blocks A-E & FE doors in Block F | BM | DPD |
| A | 02.09.13 | Drawing amended and issued to design team for comment. | RL | DPD |
| drawing status | | | | |
| PLANNING | | | | |
| project ABBEY AREA REGENERATION-PHASE 1 LONDON | | | | |
| job no. 12_510 | | | | |
| drawn BM | | | | |
| audited DPD | | | | |
| scale 1:200@A1 | | | | |
| date JUL 13 | | | | |
| dep title GENERAL ARRANGEMENT NORTH ELEVATION & NORTH SITE ELEVATION | | | | |
| fig. no. 510_1_PL_300 | | | | |
| rev B | | | | |

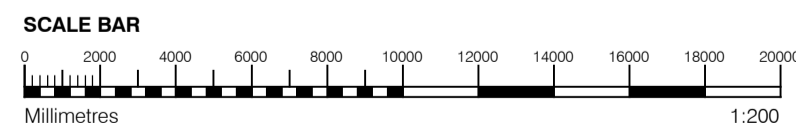




1 SOUTH ELEVATION
1:200



2 SOUTH SITE ELEVATION
1:500



GENERAL NOTES

- This drawing is copyright of PTE architects
- Use figured dimensions only. DO NOT SCALE.
- All dimensions are in millimetres unless noted otherwise
- All levels are in metres above ordnance datum unless noted otherwise
- This drawing must be read in conjunction with all other relevant drawings and specifications from the Architect and other consultants

NOTES

- All setting out to be confirmed on site prior to construction - any discrepancy must be immediately reported to the Architect.

MATERIAL KEY

A - Brick work type 1: TYPE TO BE AGREED, stretcher bond brickwork with Cemex London White mortar or similar. Openings to have a deep brick reveal (approx 225mm unless stated otherwise).

B - Brick work type 2: TYPE TO BE AGREED but darker than Type 1, stretcher bond brickwork with Cemex London White mortar or similar. Allow for darker mortar to recessed brick walls. Openings to have a deep brick reveal (approx 225mm unless stated otherwise).

C - Glazed brickwork: TYPE TO BE AGREED, stack bonded, to Block F recessed balconies. Soffits to be brick slips (same brick specification as recessed walls), also stack bonded.

D - Metal panel: bronze effect panels with hidden fixings and minimal joints.

E - Shop front frameless glass curtain walling with 75mm aluminum capping at base, bronze effect aluminum framed double or triple glazed doors to match.

F - Windows / doors: bronze effect aluminum framed double or triple glazed units (manufacturer to be agreed).

G - Canopies: Pre-formed metal boxed canopy in bronze metallic finish with hidden structure and integral lighting.

H - Perforated metal balustrade or privacy screen: perforated metal (bronze metallic finish) supported off PPC coated frame with hidden fixings and minimal joints - allow for non-uniform setting out of perforations - details to be agreed.

I - Metal Railing Balustrade: formed from PPC vertical flats (approx 65 x 8mm)

J - Metal Railing Balustrade: formed from PPC vertical flats (approx 65 x 8mm) extending to balcony soffit with metal plate fascia fixed to balcony edge

K - Precast concrete or stone coping to parapet wall - allow for reinforcement back to structure.

L - Glass balustrade: frameless glass with no visible fixings.

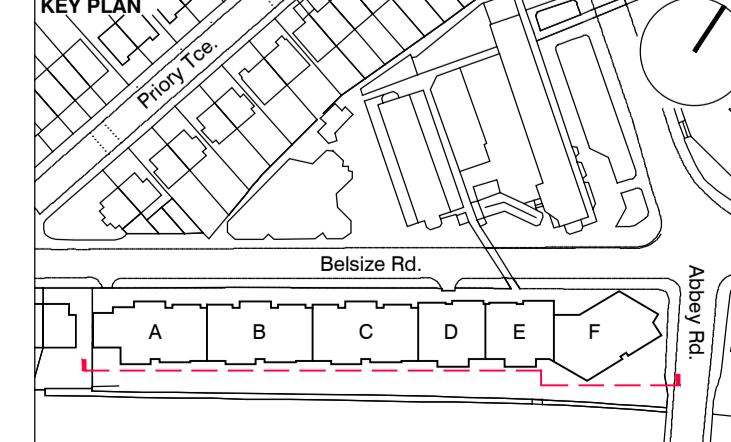
M - Residential Entrances: Glazed brickwork - mixed colours TYPES TO BE AGREED, stack bonded. Through-the-wall mailbox system (DAD or similar) with one-piece front plate with integrated door entry system - Colour to be agreed.

N - Hit and miss brickwork wall to basement cycle store - free area to meet ventilation requirements to basement

O - 1.2 m high Fagus sylvatica (beech) instant hedge planted in a double staggered row

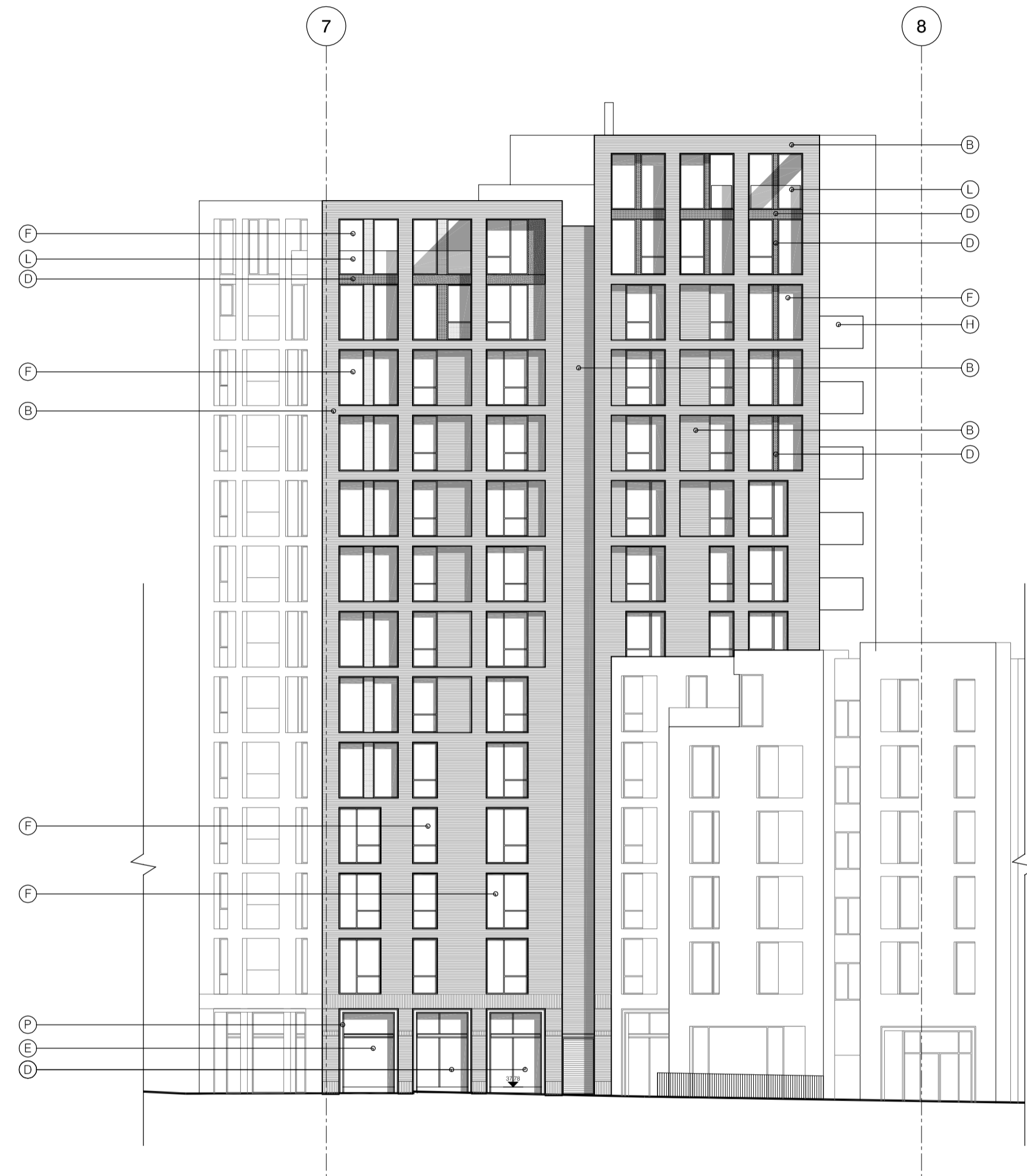
P - Reconstituted Stone on fixing ancon bracket to form architrave detail to concierge/supermarket/retail entrances

Q - Aluminium PPC louvred doors/panels to refuse store/car park ramp/fire exits

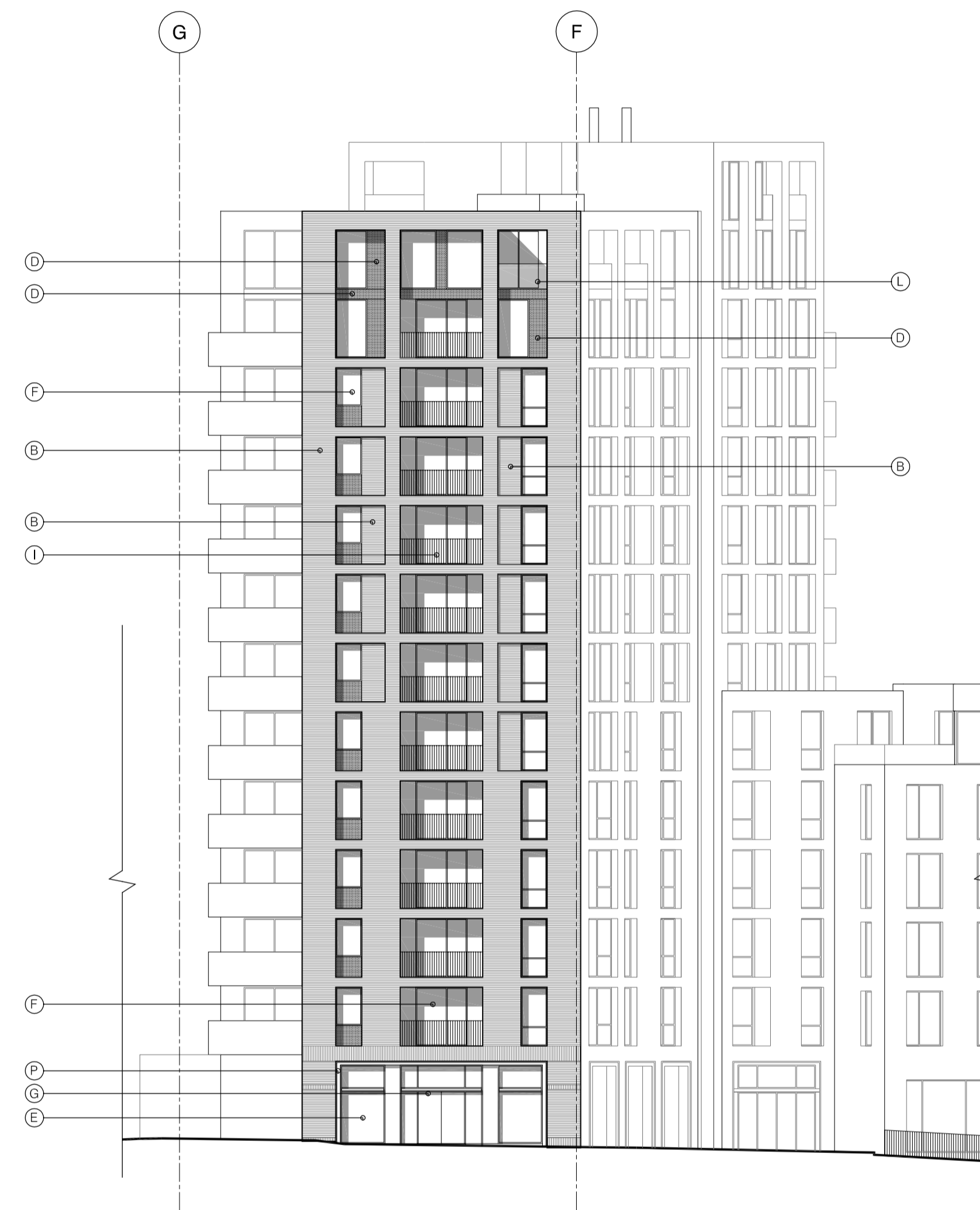


| | | | | |
|--|----------|--|----------|--------|
| rev | date | description | dm | aut |
| B | 04.10.13 | Issue for information | BM | DPD |
| A | 02.09.13 | Drawing amended and issued to design team for comment. | RL | DPD |
| PLANNING | | | | |
| project: ABBEY AREA REGENERATION-PHASE 1 location: LONDON drawing title: GENERAL ARRANGEMENT SOUTH ELEVATION & SOUTH SITE ELEVATIONS | | | | |
| job no. | drawn | audited | scale | date |
| 12_510 | LG | DPD | 1:200@A1 | JUL 13 |
| drawing no.: 510_1_PL_302 | | | | rev: B |

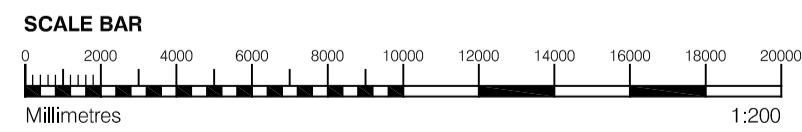




1 LANDMARK BUILDING TRUE ELEVATION- NORTH
1:200



2 LANDMARK BUILDING TRUE ELEVATION- EAST
1:200



GENERAL NOTES

- This drawing is copyright of PTE architects
- Use figured dimensions only. DO NOT SCALE.
- All dimensions are in millimetres unless noted otherwise
- All levels are in metres above ordnance datum unless noted otherwise
- This drawing must be read in conjunction with all other relevant drawings and specifications from the Architect and other consultants

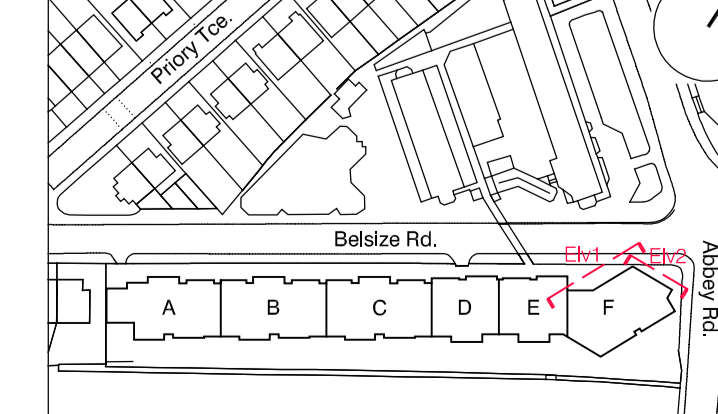
NOTES

- All setting out to be confirmed on site prior to construction - any discrepancy must be immediately reported to the Architect.

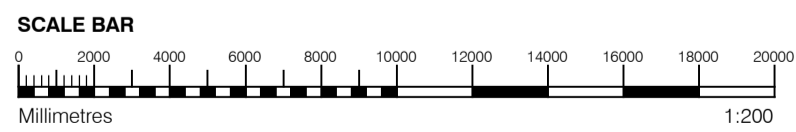
MATERIAL KEY

- A** - Brick work type 1: TYPE TO BE AGREED, stretcher bond brickwork with Cemex London White mortar or similar. Openings to have a deep brick reveal (approx 225mm unless stated otherwise).
- B** - Brick work type 2: TYPE TO BE AGREED but darker than Type 1, stretcher bond brickwork with Cemex London White mortar or similar. Allow for darker mortar to recessed brick walls. Openings to have a deep brick reveal (approx 225mm unless stated otherwise).
- C** - Glazed brickwork: TYPE TO BE AGREED, stack bonded, to Block F recessed balconies. Soffits to be brick slips (same brick specification as recessed walls), also stack bonded.
- D** - Metal panel: bronze effect panels with hidden fixings and minimal joints.
- E** - Shop front frameless glass curtain walling with 75mm aluminum capping at base, bronze effect aluminum framed double or triple glazed doors to match.
- F** - Windows / doors: bronze effect aluminum framed double or triple glazed units (manufacturer to be agreed).
- G** - Canopies: Pre-formed metal boxed canopy in bronze metallic finish with hidden structure and integral lighting.
- H** - Perforated metal balustrade or privacy screen; perforated metal (bronze metallic finish) supported off PPC coated frame with hidden fixings and minimal joints - allow for non-uniform setting out of perforations - details to be agreed.
- I** - Metal Railing Balustrade: formed from PPC vertical flats (approx 65 x 8mm)
- J** - Metal Railing Balustrade: formed from PPC vertical flats (approx 65 x 8mm) extending to balcony soffit with metal plate fascia fixed to balcony edge
- K** - Precast concrete or stone coping to parapet wall - allow for reinforcement back to structure.
- L** - Glass balustrade: frameless glass with no visible fixings.
- M** - Residential Entrances: Glazed brickwork - mixed colours TYPES TO BE AGREED, stack bonded. Through-the-wall mailbox system (DAD or similar) with one-piece front plate with integrated door entry system - Colour to be agreed.
- N** - Hit and miss brickwork wall to basement cycle store - free area to meet ventilation requirements to basement
- O** - 1.2 m high Fagus sylvatica (beech) instant hedge planted in a double staggered row
- P** - Reconstituted Stone on fixing ancon bracket to form architrave detail to concierge/supermarket/retail entrances
- Q** - Aluminium PPC louvred doors/panels to refuse store/car park ramp/fire exits

KEY PLAN



| | | | | | |
|---|--|-----------------------------|----------------|-------|--------|
| rev. | date | description | drawing status | dm | aud |
| B | 08.10.13 | Issue for information | PLANNING | BM | DPD |
| A | 04.10.13 | Block F Fire exit elevation | | BM | DPD |
| <p>project: DIESPEKER WHARF 38 Graham Street LONDON N1 8JX</p> <p>t: 020 7336 7777 w: www.ptea.co.uk f: 020 7336 0770 e: forename.surname@ptea.co.uk</p> <p>POLLARD THOMAS EDWARDS architects</p> | | | | | |
| project | ABBEY AREA REGENERATION-PHASE 1 | job no. | 12_510 | drawn | BM |
| checked | DPD | scale | 1:200@A1 | date | JUL 13 |
| desig title | GENERAL ARRANGEMENT LANDMARK BUILDING TRUE ELEVATION-NORTH & EAST | desig no. | 510_1_PL_303 | rev | B |



GENERAL NOTES

- This drawing is copyright of PTE architects
- Use figured dimensions only. DO NOT SCALE.
- All dimensions are in millimetres unless noted otherwise
- All levels are in metres above ordnance datum unless noted otherwise
- This drawing must be read in conjunction with all other relevant drawings and specifications from the Architect and other consultants

NOTES

- All setting out to be confirmed on site prior to construction - any discrepancy must be immediately reported to the Architect.

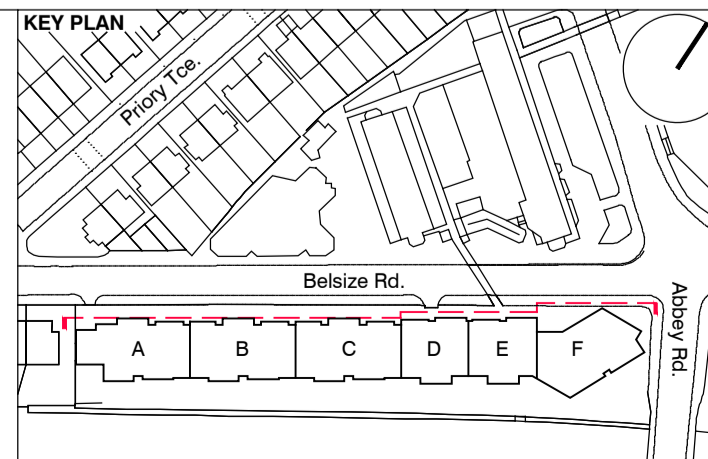
MATERIAL KEY

- A** - Brick work type 1: TYPE TO BE AGREED, stretcher bond brickwork with Cemex London White mortar or similar. Openings to have a deep brick reveal (approx 225mm unless stated otherwise).
- B** - Brick work type 2: TYPE TO BE AGREED but darker than Type 1, stretcher bond brickwork with Cemex London White mortar or similar. Allow for darker mortar to recessed brick walls. Openings to have a deep brick reveal (approx 225mm unless stated otherwise).
- C** - Glazed brickwork: TYPE TO BE AGREED, stack bonded, to Block F recessed balconies. Soffits to be brick slips (same brick specification as recessed walls), also stack bonded.
- D** - Metal panel: bronze effect panels with hidden fixings and minimal joints.
- E** - Shop front frameless glass curtain walling with 75mm aluminum capping at base, bronze effect aluminum framed double or triple glazed doors to match.
- F** - Windows / doors: bronze effect aluminum framed double or triple glazed units (manufacturer to be agreed).
- G** - Canopies: Pre-formed metal boxed canopy in bronze metallic finish with hidden structure and integral lighting.
- H** - Perforated metal balustrade or privacy screen: perforated metal (bronze metallic finish) supported off PPC coated frame with hidden fixings and minimal joints - allow for non-uniform setting out of perforations - details to be agreed.

- I** - Metal Railing Balustrade: formed from PPC vertical flats (approx 65 x 8mm)
- J** - Metal Railing Balustrade: formed from PPC vertical flats (approx 65 x 8mm) extending to balcony soffit with metal plate fascia fixed to balcony edge
- K** - Precast concrete or stone coping to parapet wall - allow for reinforcement back to structure.
- L** - Glass balustrade: frameless glass with no visible fixings.

- M** - Residential Entrances: Glazed brickwork - mixed colours TYPES TO BE AGREED, stack bonded. Through-the-wall mailbox system (DAD or similar) with one-piece front plate with integrated door entry system - Colour to be agreed.
- N** - Hit and miss brickwork wall to basement cycle store - free area to meet ventilation requirements to basement
- O** - 1.2 m high Fagus sylvatica (beech) instant hedge planted in a double staggered row

- P** - Reconstituted Stone on fixing ancon bracket to form architrave detail to concierge/supermarket/retail entrances
- Q** - Aluminium PPC loured doors/panels to refuse store/car park ramp/fire exits



| | | | | | |
|-----|----------|--|----------------|----|-----|
| rev | date | description | drawing status | BM | DPD |
| B | 04.10.13 | Issue for information | | RL | DPD |
| A | 02.09.13 | Drawing amended and issued to design team for comment. | | dm | aut |

PLANNING

| | | | | | | | |
|--|--|--------------|--|-------|---------|----------|--------|
| project | | job no. | | drawn | audited | scale | date |
| ABBEY AREA REGENERATION-PHASE 1 | | 12_510 | | LG | DPD | 1:200@A1 | JUL 13 |
| dep title | | drawing no. | | rev | | | |
| GENERAL ARRANGEMENT NORTH & NORTH SITE ELEVATION through voids | | 510_1_PL_305 | | B | | | |

PTEa
POLLARD THOMAS EDWARDS architects

Dispeker Wharf
33 Graham Street
London N1 8JX

t: 020 7336 7777 w: www.ptea.co.uk
f: 020 7336 0770 e: foreshane.surname@ptea.co.uk