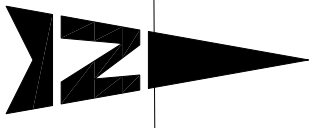
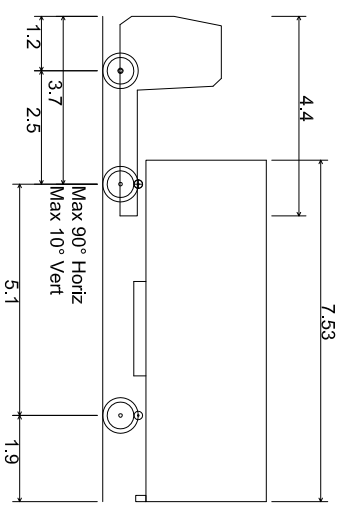
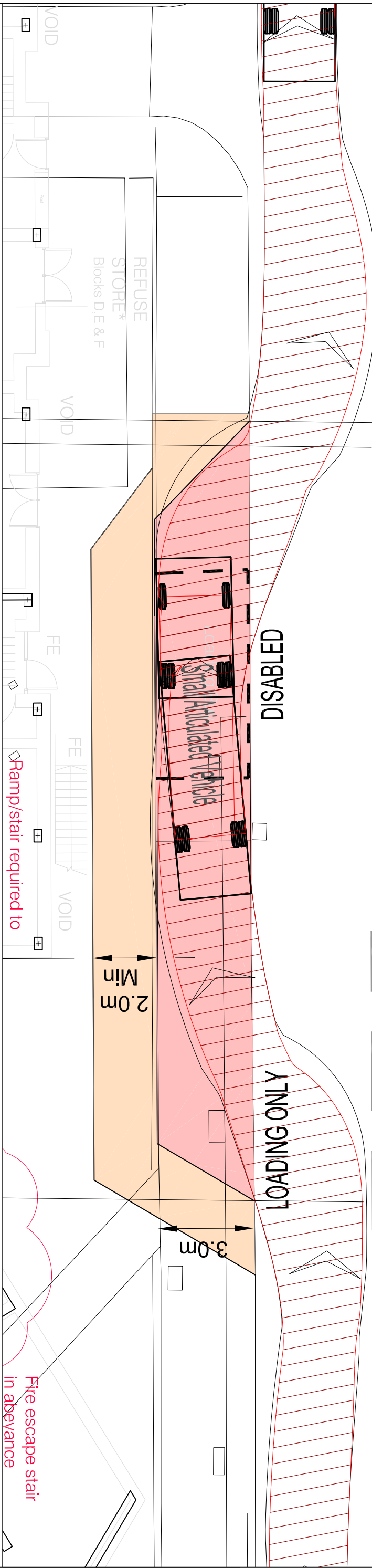


DO NOT SCALE



0.78m
 23.76m



- Small Articulated Vehicle**
- Overall Length: 10.700m
 - Overall Width: 2.360m
 - Overall Body Height: 3.604m
 - Min Body Ground Clearance: 0.382m
 - Track Width: 2.240m
 - Lock to Lock Time: 6.00 sec
 - Kerb to Kerb Turning Radius: 5.740m

© CROWN COPYRIGHT. ALL RIGHTS RESERVED
 Licence No. AL100018595

- Key:**
- Proposed footway (Orange box)
 - Proposed loading bay surfacing (Pink box)
 - Proposed disabled parking bay surfacing (Hatched box)

Start	Purpose of Issue	Date	Auth	Rev	Description

ATKINS™
 Atkins Limited
 Transport Planning,
 Longcross Court
 47, Newport Road
 Cardiff, Wales
 CF23 0AD
 Tel: (029) 20485159
 Fax: (029) 20485138
 www.atkinsglobal.com

Client	LONDON BOROUGH OF CAMDEN
Project	ABBNEY AREA REGENERATION PHASE 1

Title	PROPOSED LOADING / DISABLED PARKING BAY
Sheet Size	A3
Original Scale	1:250
Drawing Number	5109119/TP/GA/003
Status	P
Author	EVAN 9682
Checked	EVAN 9682
Approved	EVAN 9682
Rev	C

P:\GBCFA\TP\HB\Projects\PUBLIC REALM\5109119 - Abbey Road\CAD\Current Working Drawings\5109119.TP.GA.003 rev.c.dwg