

7.0 BIBLIOGRAPHY

J Allibone "The Inns of Court", 1996

E Beresford Chancellor "The Romance of Lincoln's Inn Fields", 1932

W Besant, G E Mitton "The Fascination of London: Holborn and Bloomsbury", 1903

D Evans "The Inns of Court", 1996

A Goodman "The Walking Guide to Lawyers' London", 2000

C Heckthorn "Lincoln's Inn Fields and Localities Adjacent", 1896

M Herber "Legal London: A Pictorial History", 1999

A Holdsworth "A Portrait of Lincoln's Inn" (2006)

The Honourable Society of Lincoln's Inn, The Black Books Volumes

1 1422-1586 (ed W P Baildon)

2 1586-1660 (ed W P Baildon)

3 1660-1775 (ed W P Baildon)

4 1776-1845 (ed W P Baildon)

5 1845-1914 (ed Sir R Roxburgh)

6 1914-1965 (ed P V Baker)

M Lear "Building History and Estates Overview", 2004, *Internal Lincoln's Inn document*

W J Leftie "The Inns of Court and Chancery", 1895

J Lubbock "The Tyranny of Taste", 1995

E McKellar "The Birth of Modern London: The Redevelopment and Design of the City 1660-1720", 1999

The Oxford Dictionary of National Biography, online version

W Paley Baildon "The Quincentenary of Lincoln's Inn", *Country Life*, 16 December 1922, p818

R Pearce "A Guide to the Inns of Court and Chancery", 1855

W Prest "The Inns of Court under Elizabeth I and the Early Stuarts", 1972

S Priestly "The Fountain and Gardens in New Square Lincoln's Inn – A Brief History" in "The London Gardener", 1997-8, vol 3, p24-29

RCHME London II: West London (1925)

The Richard Coleman Consultancy "The Fountain and Gardens: New Square Lincoln's Inn", 2002

W C Richardson "A History of the Inns of Court", 1976

J Summerson "Architecture in Britain 1530-1830", 1993

G Tyack "The Rebuilding of the Inns of Court 1660-1700" in "The Intellectual and Cultural World of the Early Modern Inns of Court" J Archer, E Goldring, S Knight (eds) draft copy 2009

www.visionofbritain.org.uk

M Vitoria "New Square, Lincoln's Inn and its Flying Freeholds" in "The Conveyancer & Property Lawyer" Vol 41, 1977, p13

B Weinreb and C Hibbert (eds) "The London Encyclopaedia", 1983

8.0 THE PLATE LIST AND PLATES

1. A prospect of Lincoln's Inn c1720.
2. A prospect of Lincoln's Inn c1755 (based on 1720 engraving).
3. A sketch of New Square c1740.
4. New Square before 1752.
5. Lincoln's Inn Great Square c1804.
6. A plan of No 9 New Square accompanying the 1860 Act of Parliament (typical of plans of each house drawn up at the time of the Act).

NB. Images supplied by Lincoln's Inn Library; copyright clearance to be sought.

9.0 THE DRAWING LIST AND DRAWINGS

1. Basement as existing.
2. Ground floor as existing.
3. First floor as existing.
4. Second floor as existing.
5. Third floor as existing.
6. Fourth floor as existing.

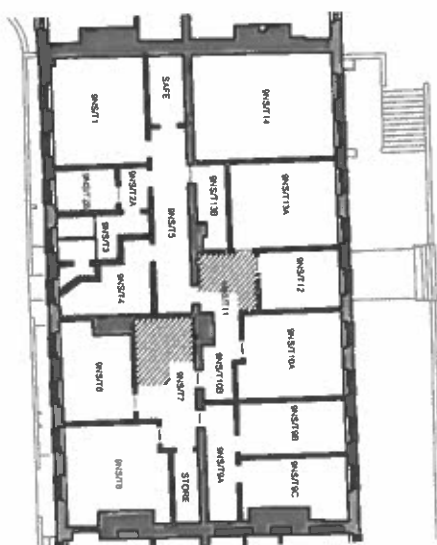
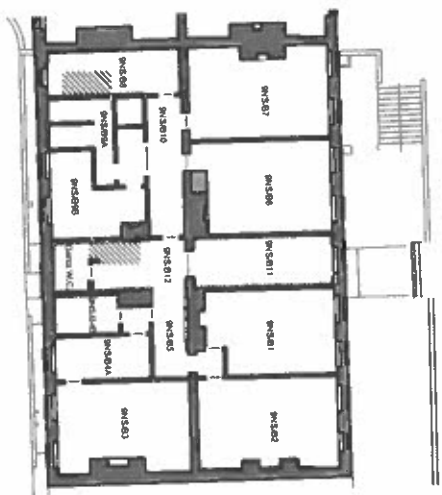
Appendix I

The Statutory Listing Description

IoE Number:	478672
Location:	NUMBERS 1-11 AND ATTACHED RAILINGS, 1-11 NEW SQUARE (east side) CAMDEN TOWN, CAMDEN, GREATER LONDON
Date listed:	24 October 1951
Date of last amendment:	24 October 1951
Grade:	II*

CAMDEN TQ3081 SE LINCOLN'S INN 798-1/106/1027 (East side) 24/10/51 Nos.1-11 (consec) New Square and attached railings GV II* 11 chambers. c1690-97. By Dr Nicholas Barbon. For Henry Vincent, Lord Chandos of Sudeley. The form of New Square established 1682 and foundations probably dug 1685 by Henry Serle, with whom Barbon had been involved through the former's partner, Robert Clerke, but who died in 1690. Brown brick with red brick dressings, basements now stuccoed. Slated roofs behind parapets. EXTERIOR: 4 storeys and basements, the top storey being added in C18. Stone, architraved doorcases with pulvinated frieze, console-bracketed cornice and curved, broken pediment with ball in centre, with the exception of No.10 with a triangular pediment and No.11 without a ball. No.1: red brick bands at 1st and 2nd floor levels; 3rd floor with multi-coloured stock brick band. 9 windows. Gauged red brick flat arches to slightly recessed sash windows most with exposed boxing and most with C18 glazing bars. Ground and some 1st floor windows with shutters. Some 1st and 2nd floor windows with C19 blind boxes. On left return, a stone tablet set up by John Greene, Treasurer of Lincoln's Inn in 1693, inscribed "This wall is built upon the ground of Linconles Inne. No windows are to be broken out without leave". INTERIOR: with original panelling to the hall and some of the rooms. Original dog-leg stair with turned balusters and square reveals. No.2: red brick band at 2nd floor level. 9 windows. Gauged red brick segmental arches to slightly recessed sash windows. Ground floor and 5 windows of 1st floor with shutters. INTERIOR: with some panelling. Round iron balusters to stone stairs. RCHM (West London) suggests that No.2 was rebuilt during the C18 and C19. No.3: brick band at 1st floor level. 4 windows and 1 window on right hand forward return. Gauged red brick flat arches to flush frame sash windows with exposed boxing. Shutters to 3 ground floor windows. INTERIOR: round iron balusters to stone stairs. No.4: 3rd floor partly rebuilt in yellow stock brick. 4 windows and attic dormers. Ground floor with door to right and to left the Back Gate to Carey Street. 4 centred arch to New Square with grotesque keystone, carved brackets supporting broken segmental pediment with scrolls at sides. Above, 2 segmental pedimented enriched panels with coats-of-arms dated 1697 of De Lacy and Serle. The back gate originally consisted of a carriage-way and 2 flanking pedestrian passages. The footways were converted into shops c1843. Each footway of 4 bays with pilasters carrying groined vault. Shop fronts in bays with large panes. The 4-centred arch to Carey Street is flanked by panelled Doric pilasters with cornice, broken scroll pediment and elaborately panelled gates. Both arches are of painted cement. Below arches at both ends of the passage, C19 lamps of Nico type supported by scroll work. INTERIOR: altered; turned balusters and square newels to dog leg stair with closed string. No.5: brick bands at 1st and 2nd floor. 4 bays of the 3rd floor stuccoed with architraved sashes and a cornice. 9 windows. Gauged red brick flat arches to flush framed sashes with exposed boxing. INTERIOR: turned balusters and square reveals to dog leg stairs. No.6: brick bands at 1st and 2nd floor. 6 bays of the 3rd floor stuccoed with architraved sashes and a rudimentary cornice. 9 windows. Gauged red brick flat arches to flush framed sashes with exposed boxing. INTERIOR: turned balusters and square reveals to dog leg stairs. No.7: brick bands at 1st and 2nd floor. On return, 3rd floor moulded brick band. 3 1/2 bays of 3rd floor stuccoed with architraved sashes and a rudimentary cornice. Rest of 3rd floor partly

rebuilt. 4 windows and 1 window to right hand forward return. Gauged red brick flat arches to flush framed sashes. INTERIOR: turned balusters and square reveals to dog leg stairs. No.8: moulded brick band to 2 left hand 3rd floor bays. Centre bays, 3rd and 4th floor yellow stock brick with red brick dressings. 11 windows. Gauged red brick flat arches to flush framed sashes with exposed boxing. INTERIOR: turned balusters and square reveals to dog leg stairs. No.9: brick bands at 1st, 2nd and 3rd floor levels. 4th storey in yellow stock brick. 9 windows. Gauged red brick flat arches to flush framed sashes with exposed boxing. INTERIOR: turned balusters and square reveals to dog leg stairs. No.10: frontage rebuilt after a fire in 1752 and partly re-faced and re-roofed c1951 after war damage. Yellow stock brick. Stone bands at ground and 1st floor level. Stone 1st floor sill band and stone bracketed cornice at 3rd floor level. 9 windows. Flat brick arches to recessed sashes. 3 formers form central roof line feature with central window in arched recess with pediment. INTERIOR: dog leg stair with square iron balusters. No.11: frontage partly re-faced and re-roofed c1951 after war damage. Red brick with plain brick band at 1st floor level and moulded brick band at 2nd floor. Tiled roof with dormers. 3 storeys, basement and attic. 8 windows. Gauged red brick flat arches to flush frame sashes with exposed boxing. At 1st floor level a carved and inscribed plaque dated 1691; also date plaques inscribed DSC 1693, FSG 1787 and TS 1951. SUBSIDIARY FEATURES: attached cast-iron railings to areas with urn finials. HISTORICAL NOTE: New Square is important as a very well preserved and early example of a set of early legal chambers, remarkably spacious and with good panelled interiors not seen. It is also one of the most complete surviving C17 set pieces in London.



Key	C170n	C180n	C180n	C170n

[illegible]

DONALD INSALL ASSOCIATES LIMITED

19 West Eaton Place London SW1X 8LT Tel: 020 7245 9868 Fax: 020 7235 4370 Email: london@timall-architects.co.uk

**CHARTERED ARCHITECTS
PLANNING CONSULTANTS**

Job	Status
No	Key
Scale (A3)	1: