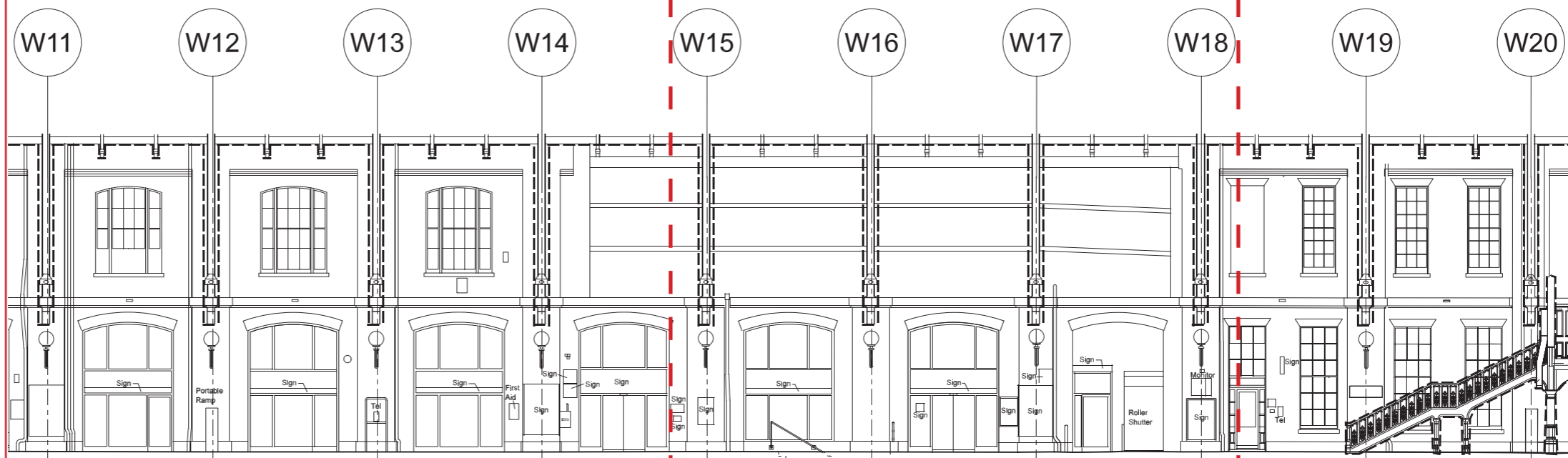


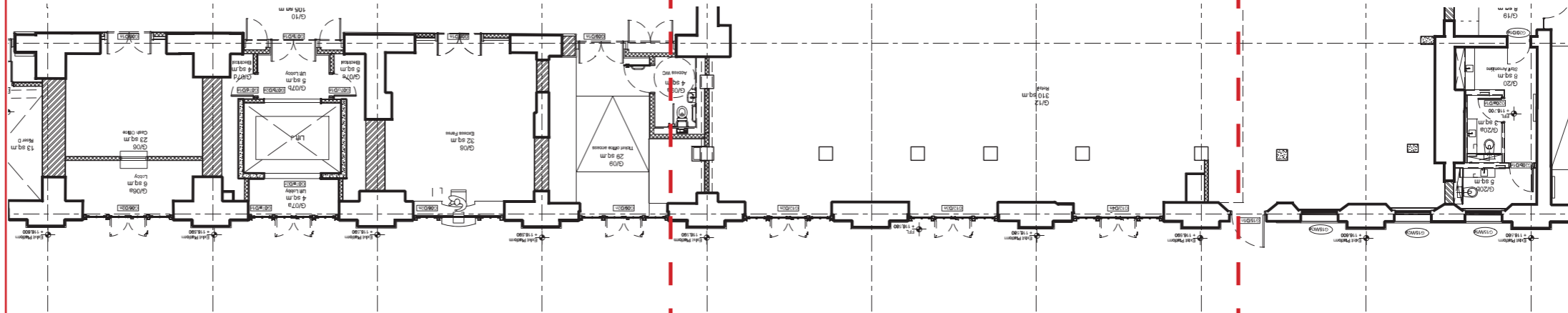
Extracted from submission 2010/2262/L Condition LB20Aii ENG-REP-G5-OAP-006-CBSA-0285-Subsection LB20Aii Platform 8 Screens
 Part of drawing showing area relevant to this submission.



Existing East Elevation



Proposed East Elevation

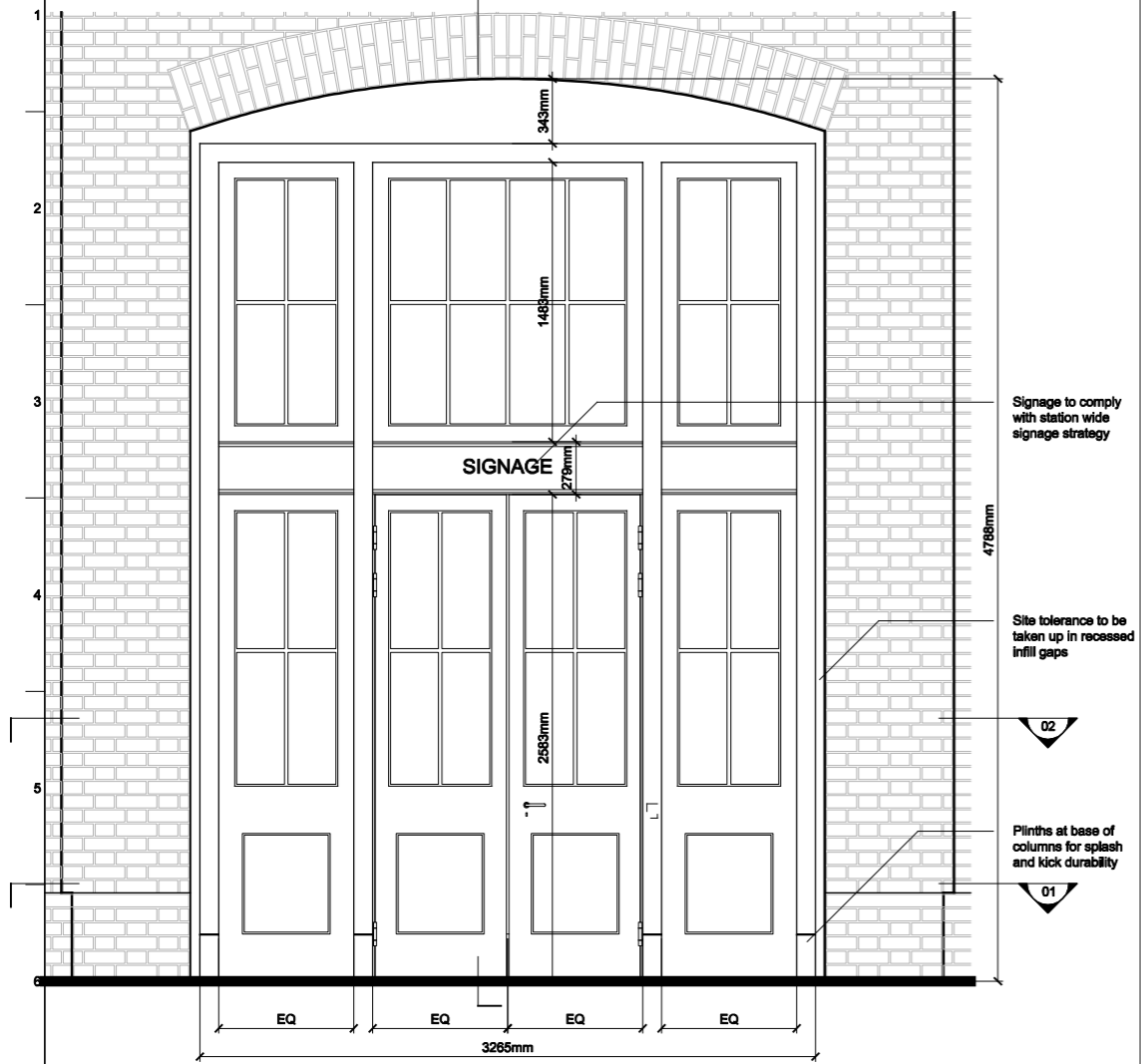


Proposed Ground Floor Plan

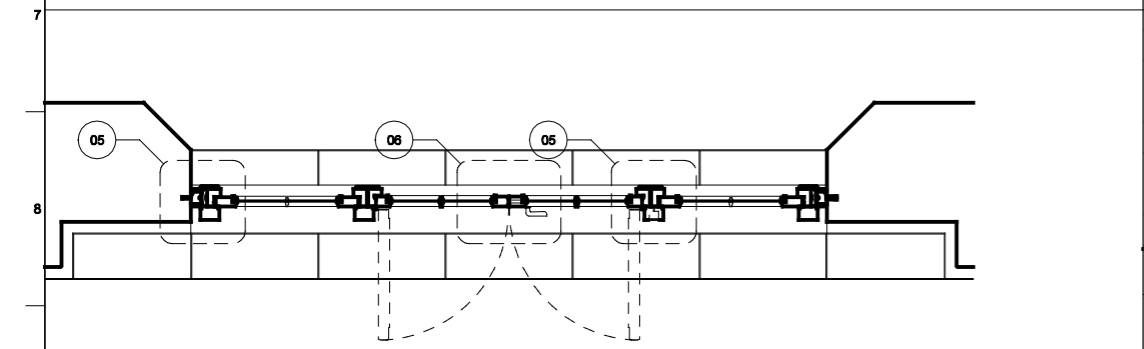
Reference number
 Room usage
 Type

G06/D2n	G07a/D1n	G08/D2n	G09/D2n	G12/D2n	G12/D3n	G12/D4n	G15/D1n
Cash Office	Lift	Excess Fares	Office access	Retail	Retail	Retail	Retail
Type A	Type A	Type A2	Type A	Type A	Type A	Type A	Type B

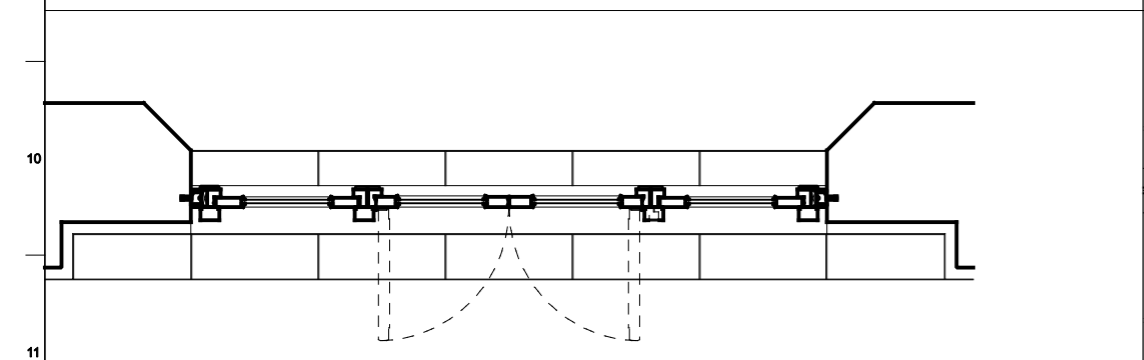
Extracted from submission 2010/2262/L Condition LB20Aii ENG-REP-G5-OAP-006-CBSA-0285-Subsection LB20Aii Platform 8 Screens



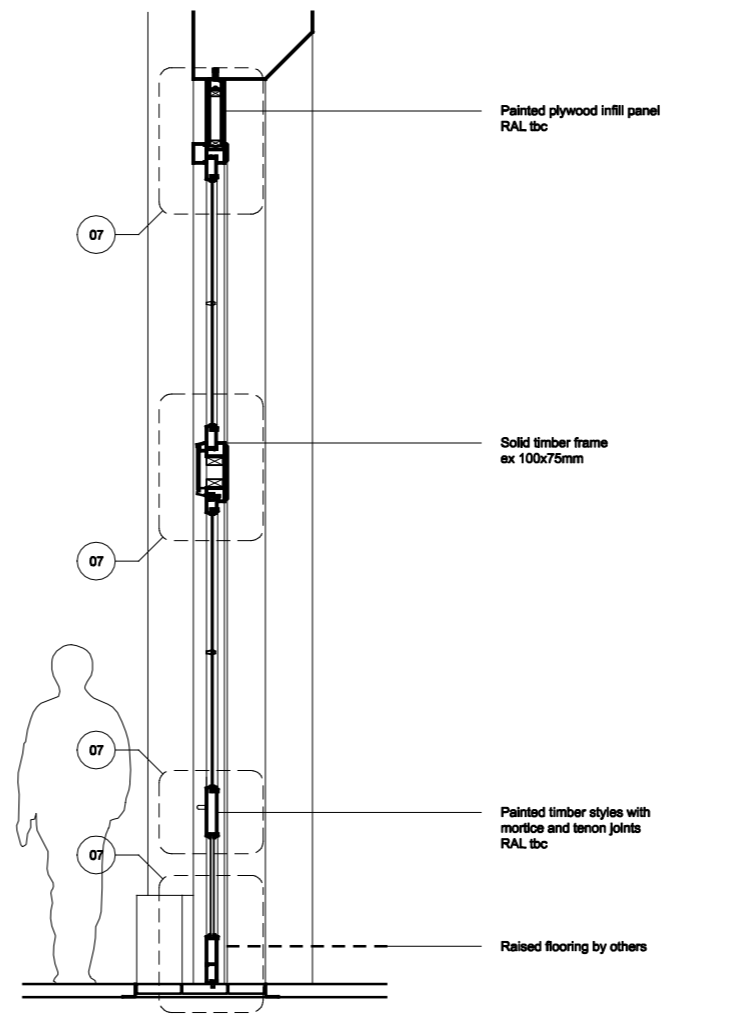
01 ELEVATION, SCALE 1:20



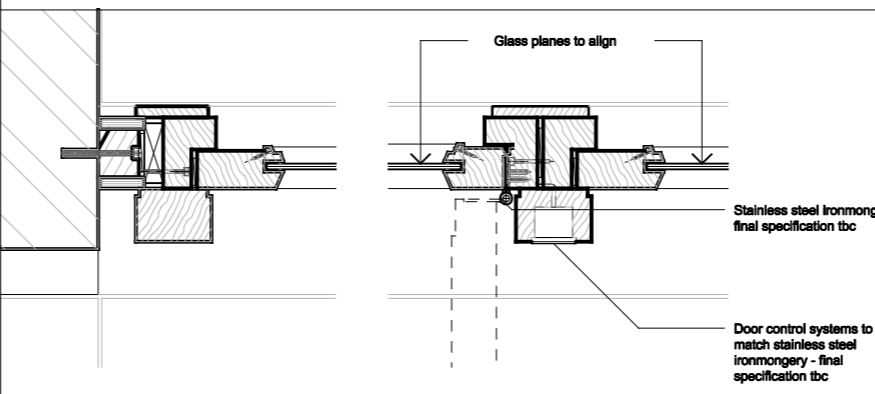
02 PLAN, SCALE 1:20



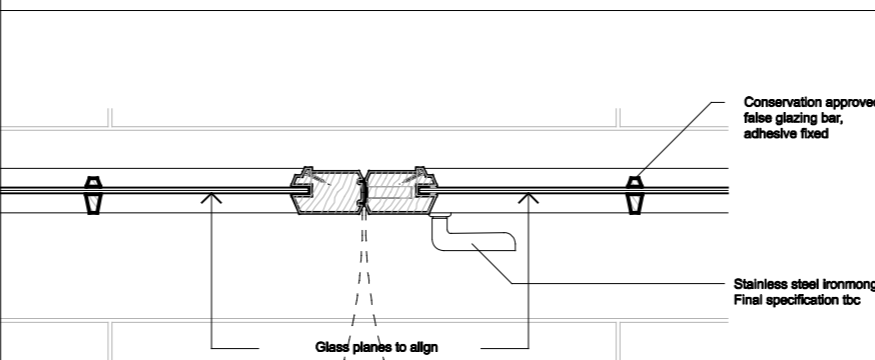
03 PLAN, SCALE 1:20



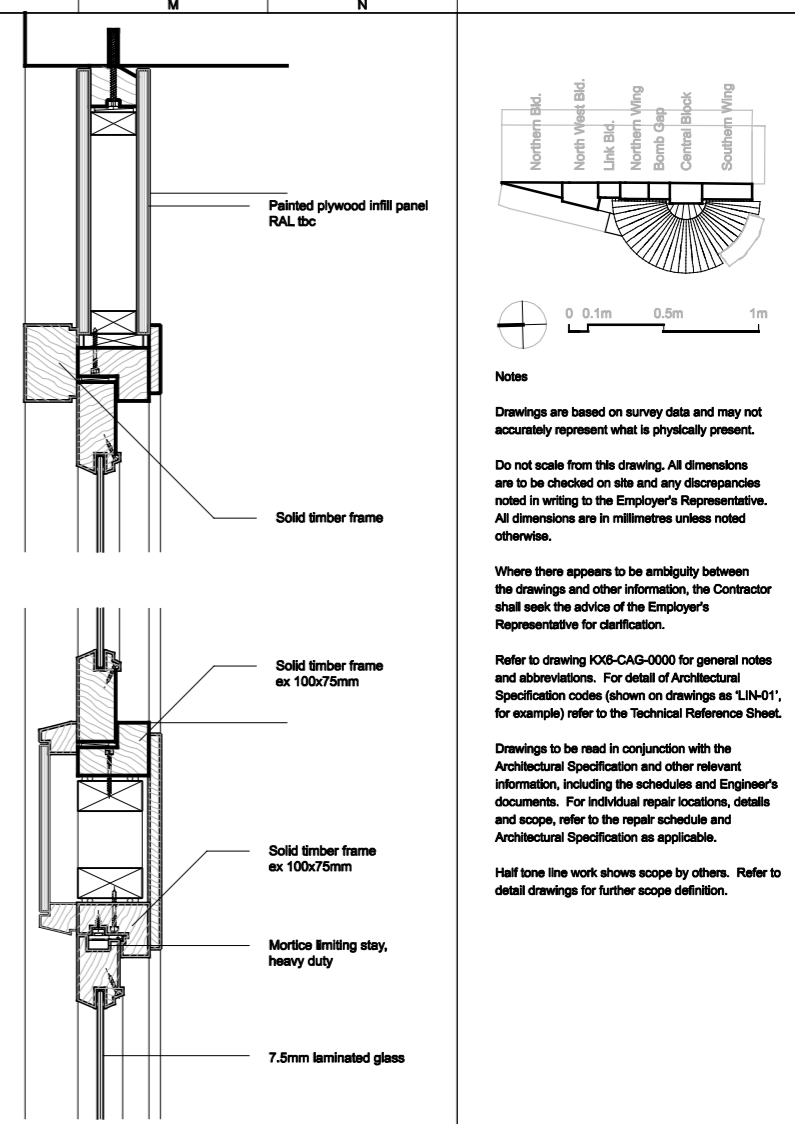
04 SECTION, SCALE 1:20



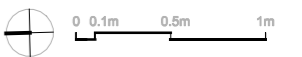
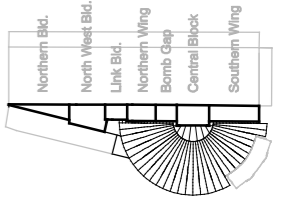
05 DETAIL PLAN, SCALE 1:5



06 DETAIL PLAN, SCALE 1:5



07 DETAIL SECTION, SCALE 1:5



Notes
 Drawings are based on survey data and may not accurately represent what is physically present.
 Do not scale from this drawing. All dimensions are to be checked on site and any discrepancies noted in writing to the Employer's Representative. All dimensions are in millimetres unless noted otherwise.
 Where there appears to be ambiguity between the drawings and other information, the Contractor shall seek the advice of the Employer's Representative for clarification.
 Refer to drawing K06-CAG-0000 for general notes and abbreviations. For detail of Architectural Specification codes (shown on drawings as 'LIN-01', for example) refer to the Technical Reference Sheet.
 Drawings to be read in conjunction with the Architectural Specification and other relevant information, including the schedules and Engineer's documents. For individual repair locations, details and scope, refer to the repair schedule and Architectural Specification as applicable.
 Half tone line work shows scope by others. Refer to detail drawings for further scope definition.

Issue	Date	By	Chkd	Appd

ARUP
 13 Fitzroy Street
 London W1T 4BQ
 Tel +44(0)20 7638 1531 Fax +44(0)20 7690 3924
 www.arup.com

John McAslan + Partners
 48 Priory Place London W11 4QA
 Tel +44 (0)20 7727 2893
 Fax +44 (0)20 7221 8826
 www.mcaslan.co.uk

Client

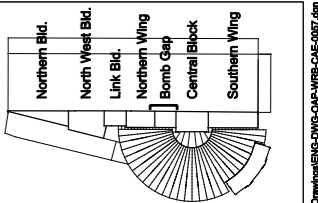
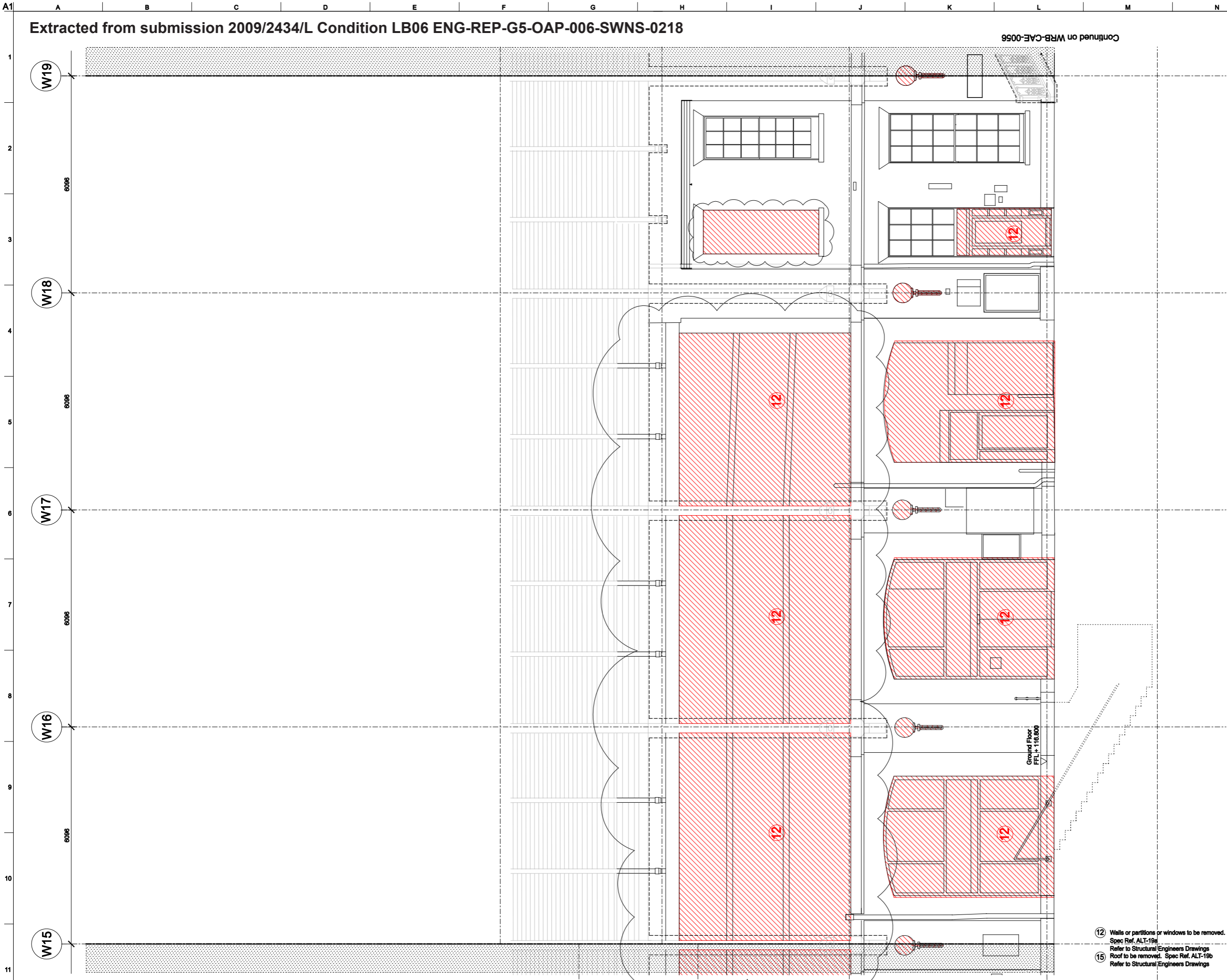
Job Title
 King's Cross Station
 Redevelopment Programme
 Package 6

Drawing Title
 Western Range Building
 East Elevation
 Proposed New Timber Screen
 Typical Screen

Scale at A1 1:20, 1:5 (see sheet)

OCMS No

Drawing Status
For Information
 OAP Job No 123345-00 Drawing No WRB-CAZ-0476 Rev.



Notes

Drawings are based on survey data and may not accurately represent what is physically present.

Do not scale from this drawing. All dimensions are to be checked on site and any discrepancies noted in writing to the Employer's Representative. All dimensions are in millimetres unless noted otherwise.

Where there appears to be ambiguity between the drawings and other information, the Contractor shall seek the advice of the Employer's Representative for clarification.

Refer to drawing K08-CAG-0000 for general notes and abbreviations. For detail of Architectural Specification codes (shown on drawings as 'LIN-01', for example) refer to the Technical Reference Sheet.

Drawings to be read in conjunction with the Architectural Specification and other relevant information, including the schedules and Engineer's documents. For individual repair locations, details and scope, refer to the repair schedule and Architectural Specification as applicable.

Half tone line work shows scope by others. Refer to detail drawings for further scope definition.

Refer to GA plans for finished floor levels

Lighting shown as indicative only. Refer to M&E engineer's information for lighting details and location

All MEP wiring, plumbing, pipework and ductwork to be disconnected and removed as per specification by package 2/3.

To be read in conjunction with the Salvage Strategy report and repair schedule.

DISCLAIMER

Drawings are based on a survey by others and may not accurately represent what is physically present.

All drawings must be read with reference to the specifications and by viewing the specific conditions on site.

Key

Area where elements are to be removed

02	15/05/09	JMP	GM	AD
Post Value Management coordination issue				
01	29/02/08	GM	AD	MC
For GRIP 5B Production Information				

ARUP

13 Fitzroy Street
London W1T 4BQ
Tel +44(0)20 7636 1631 Fax +44(0)20 7680 3624
www.arup.com

John McAslan + Partners

49 Prince Place London W11 4QA
Tel : +44 (0)20 7227 2883
Fax: +44 (0)20 7221 8825
www.mcaslan.co.uk

Architect
 Landscape Architect



Client

King's Cross Station
Redevelopment Programme
Package 6

Drawing Title

Wester Range Building
East Elevation - Bomb Gap
Demolition

Scale at A1 1:50

CCMS No

Drawing Status

For Construction

OAP Job No	Drawing No	Rev.
123345-00	WRB-CAE-0057	02