

REVISION DETAILS	DATE	DRW	CHK
A ELEVATION FIRST ISSUE	20.08.13	DMA	ALL
B ELEVATION REVISED WITH CHANGES TO WINDOW ADJUSTMENTS TO WINDOW HEIGHTS MARK	17.08.13	DMA	ALL
C ELEVATION REVISED WITH CHANGES TO APARTMENT SPACES	27.08.13	DMA	ALL
D ADDITIONAL PLANNING DOCUMENTATION	28.05.13	DMA	ALL



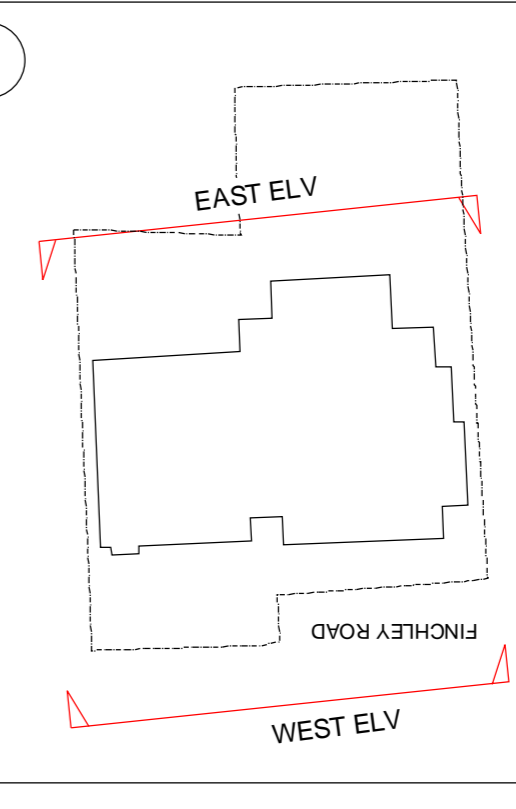
SLIDING DOOR REMOVED

SLIDING DOOR REMOVED

1 EAST ELEVATION

- KEY**
- BRICK - MUEBERBERGER OLDE CHESHIRE RED MULTI OR EQUAL AND APPROVED
  - TERRACOTTA RAIN SCREEN JAMES AND TAYLOR - ALPHATON PERLGRAU STANDARD OR EQUAL AND APPROVED
  - NATURAL STONE CLADDING PUTNEY AND WOOD - MOLEANS OR EQUAL AND APPROVED
  - WINDOW/DOOR FRAME RAL 7039 MATT

KEY	RESIDUAL RISK



PROPOSED FULLY GLAZED LINK ADVISE OF CONSERVATION OFFICER IN PLANNING DOCUMENT DIALOGUE SCHEDULE PART 3. GLAZING TREATMENT TO HIDE EDGE OF FLOOR SLABS.

P.V.s SHOWN ON ROOF AS PER APPROVED ROOF PLAN



SLIDING DOOR CHANGED FROM A THREE PANE CONFIGURATION TO A TWO PANE CONFIGURATION TO ALLOW CLEAR FULLY ACCESSIBLE DOOR CLEAR WIDTHS

SLIDING DOOR CHANGED FROM A THREE PANE CONFIGURATION TO A TWO PANE CONFIGURATION TO ALLOW CLEAR FULLY ACCESSIBLE DOOR CLEAR WIDTHS

SLIDING DOOR CHANGED FROM A THREE PANE CONFIGURATION TO A TWO PANE CONFIGURATION TO ALLOW CLEAR FULLY ACCESSIBLE DOOR CLEAR WIDTHS

SLIDING DOOR CHANGED FROM A THREE PANE CONFIGURATION TO A TWO PANE CONFIGURATION TO ALLOW CLEAR FULLY ACCESSIBLE DOOR CLEAR WIDTHS

2 WEST ELEVATION

FRONT DOOR ENTRANCE VISION PANEL ADDED

WINDOWS REMOVED AS NOT REQUIRED INTERNALLY

SLIDING DOOR CHANGED FROM A THREE PANE CONFIGURATION TO A TWO PANE CONFIGURATION TO ALLOW CLEAR FULLY ACCESSIBLE DOOR CLEAR WIDTHS



PROPOSED ELEVATIONS

ORIGINATOR	DRAWING TITLE
www.davidmiller.co.uk	ELEVATION SHEET 2

JOB TITLE	JOB NO	STATUS	FOR INFORMATION
368 - 372 FINCHLEY ROAD	282		

SCALE	DATE	CHECKED	APPROVED
1:200 @ A3	01/12/2008	AD	DMA