

Information contained within this drawing is the sole copyright of 21st Architecture Ltd. and is not to be reproduced without express permission. No implied licence exists. This drawing not to be used for land transfer or valuation purposes. Do not scale from this drawing. All dimensions & levels are to be checked on site by the contractor. Issued for purposes indicated only. Drawing errors and omissions to be reported to the architect.

Notes



**C South Elevation**  
GE.01 1:200

**D North Elevation**  
GE.01 1:200



**B West Elevation**  
GE.01 1:200



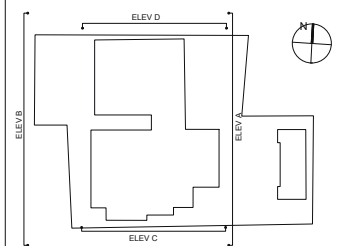
**A East Elevation**  
GE.01 1:200

23.08.12	P3 - Amendments in response to comments from Planning Officer	AH
28.09.11	P.1 - Issued for Planning	ZA
27.09.11	Rev A - Minor amendments including set-backs at 2nd and 3rd floors.	ZA

Revisions



Twenty First Architecture Ltd,  
30 Underwood Street,  
London,  
N17JQ  
Tel: +44(0)20 7324 2662  
www.21starchitecture.com



Client Jewish Care

Project Kay Court  
368-372 Finchley Road

Drawing Title  
Kay Court  
General Arrangement  
Elevations

Status	Planning	Drawn	MC	Checked	PK
Scale	1:100@A1/1:200@A3	Date	Aug 2011		

0 2 5 10m

ELEVATIONS AS APPROVED