

# Athlone House

Transport Statement

VN50162 | June 2013

## Athlone House – Transport Statement

Document Title: Transport Statement  
Version: 3.0  
Date: June 2013  
Prepared by: Victoria Watkins / Jeff Troake  
Approved by: Adrian Cole

SKM Colin Buchanan is part of the Sinclair Knight Merz Group.

### **Sinclair Knight Merz**

ABN 37 001 024 095

New City Court  
20 St Thomas StreetStreet  
London  
SE1 9RS

Tel: +44 (0) 20 7939 6100  
Fax: +44 (0) 20 7939 6101  
Web: [www.skmcolinbuchanan.com](http://www.skmcolinbuchanan.com)

**COPYRIGHT:** The concepts and information contained in this document are the property of Sinclair Knight Merz Pty Ltd. Use or copying of this document in whole or in part without the written permission of Sinclair Knight Merz constitutes an infringement of copyright.

**LIMITATION:** This report has been prepared on behalf of and for the exclusive use of Sinclair Knight Merz Pty Ltd's Client, and is subject to and issued in connection with the provisions of the agreement between Sinclair Knight Merz and its Client. Sinclair Knight Merz accepts no liability or responsibility whatsoever for or in respect of any use of or reliance upon this report by any third party.

## Document history and status

Revision	Date issued	Reviewed by	Approved by	Date approved	Revision type

## Distribution of copies

Revision	Copy no	Quantity	Issued to

<b>Printed:</b>	1 July 2013
<b>Last saved:</b>	28 June 2013 09:54 AM
<b>File name:</b>	Athlone House - Transport Statement v3.0 28 June 2013
<b>Author:</b>	Victoria Watkins
<b>Project manager:</b>	Jeff Troake
<b>Name of organisation:</b>	Athlone House Ltd.
<b>Name of project:</b>	Athlone House
<b>Name of document:</b>	Draft
<b>Document version:</b>	3.0
<b>Project number:</b>	VN50162

## Contents

1.	Introduction.....	1
1.1	Introduction.....	1
1.2	Site location.....	1
1.3	Policy Context.....	1
1.4	Content of the report.....	1
2.	Site Accessibility.....	3
2.1	Introduction.....	3
2.2	Sustainable Transport.....	3
2.3	Buses.....	3
2.4	Vehicular access.....	6
3.	Proposed development.....	8
3.1	History of the Site.....	8
3.2	This application.....	8
3.3	Proposed site access and transport accessibility.....	11
4.	Traffic Impact.....	13
4.1	Trip generation.....	13
5.	Summary and Conclusion.....	15
5.1	Summary.....	15
5.2	Conclusion.....	16
	Appendix A: Policy Context.....	1
	National Policy.....	1
	Regional Policy.....	2
	Local Policy <sup>3</sup>	
	Appendix B: Bus Timetables.....	5
	FIGURE 1.1: SITE LOCATION.....	2
	TABLE 2.1: BUS SERVICES.....	3
	FIGURE 2.1: CYCLING ROUTES.....	4
	FIGURE 2.2: PUBLIC TRANSPORT.....	5
	FIGURE 2.3: SITE ACCESS ARRANGEMENTS.....	7
	FIGURE 3.1: CONSENTED AND CURRENT PLANNING APPLICATION – GROUND FLOOR LEVEL.....	9
	FIGURE 3.2: CONSENTED AND CURRENT PLANNING APPLICATION – BASEMENT LEVEL.....	10
	TABLE 3.1: LONDON PLAN CYCLE PARKING STANDARDS.....	11
	TABLE 4.1: RESIDENTIAL (C3) FORECAST PERSON TRIP RATES AND TRIP GENERATION.....	13
	TABLE 4.2: RESIDENTIAL (C3) FORECAST MODAL SPLIT.....	13
	TABLE 4.3: RESIDENTIAL (C3) FORECAST VEHICLE TRIP RATES AND TRIP GENERATION.....	14
	TABLE A1: LONDON PLAN CYCLE PARKING STANDARDS.....	3

## 1. Introduction

### 1.1 Introduction

SKM Colin Buchanan (SKM CB) has been commissioned by Athlone House Ltd to prepare a Transport Statement in support of the planning application for the redevelopment of Athlone House. The proposals are for an eight bedroom dwelling with vehicular access to be taken from Hampstead Lane. No alterations are proposed to this existing access.

This Transport Statement looks at the potential impact on the transport network as a result of the proposed redevelopment of Athlone House. It considers access to the site and reviews the availability of existing sustainable modes of transport.

### 1.2 Site location

Athlone House is located to the northern extent of the London Borough of Camden (LBC), to the north of Hampstead Heath. The London Borough of Haringey (LBH) lies to the north of the development with Hampstead Lane being maintained by LBH.

The site is accessed via Hampstead Lane. The site location is presented in the context of the local highway network in Figure 1.1.

### 1.3 Policy Context

A policy review has been undertaken. The Transport Statement has been prepared with regard to the current national, regional and local policies relevant to the proposed development. This review is included at Appendix A of the Transport Statement.

### 1.4 Content of the report

The remainder of this Transport Statement is structured as follows:

- Chapter 2 details the accessibility to the site including sustainable transport provision.
- Chapter 3 provides a summary of the proposed development.
- Chapter 4 considers the impact of the development on the highway impact.
- Chapter 5 summarises the report and sets out the conclusions.





**KEY**

Site Location

Site Location in  
relation to Highway Network

Client	Athlone House Ltd
Job Title	Athlone House

**SKM COLIN BUCHANAN**

Scale: N.T.S	Ckd/Appd: JT
Designed by: VW	1st Issued: October 2012
Drawn by: VW	Job No: Vn50162

File Extension:	
Drg No:	Figure 1.1

## 2. Site Accessibility

### 2.1 Introduction

This chapter presents the review of the site's accessibility by all modes of transport. Private vehicular access and by sustainable modes such as by bus, cycling and walking have been reviewed.

### 2.2 Sustainable Transport

#### 2.2.1 Walking

The development is located approximately 100m south of Hampstead Lane. Footways are provided on both sides of Hampstead Lane and other local roads in the area. The site benefits from being within close proximity of bus stops located on Hampstead Lane. It is also within a reasonable walking distance of local facilities which are located on Highgate High Street approximately 750m to the east of the site. Pedestrian routes are generally overlooked with street lighting located at regular intervals.

#### 2.2.2 Cycling

Athlone House is located in close proximity to a network of cycle routes. The majority of the routes are on road and have been identified as recommended routes on quieter roads. A number of off-road cycle paths are provided to the south of the site on Hampstead Heath. These routes are shown in Figure 2.1.

An indicative 8km catchment is also indicated on this figure as an acceptable cycle time for a local trip which represents a 30 minute cycle time. The site is within 8km of Central London.

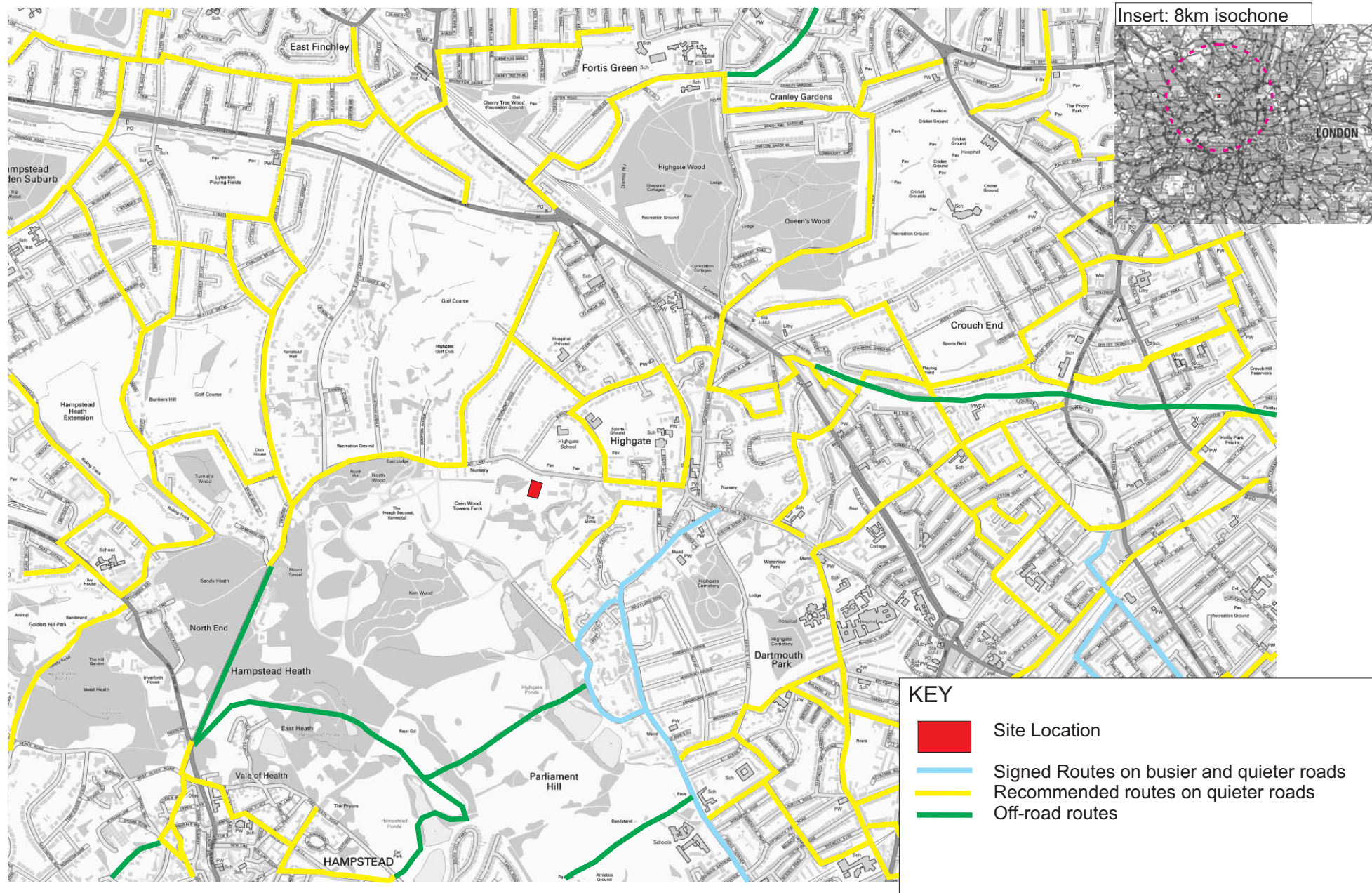
### 2.3 Buses

Bus stops are located close to the access of the development on Hampstead Lane, approximately 100m from Athlone House. Bus stops are located on both sides of the road for eastbound and westbound services. The bus services that operate in the vicinity of the site are summarised below and the routes are indicated on Figure 2.2.

Table 2.1: Bus services

Service	Route	Frequency
210	Brent Cross – Finsbury Park Station	Mon-Fri 8am-8pm: 7-9 minutes
603	Swiss Cottage – Muswell Hill	4 services a day



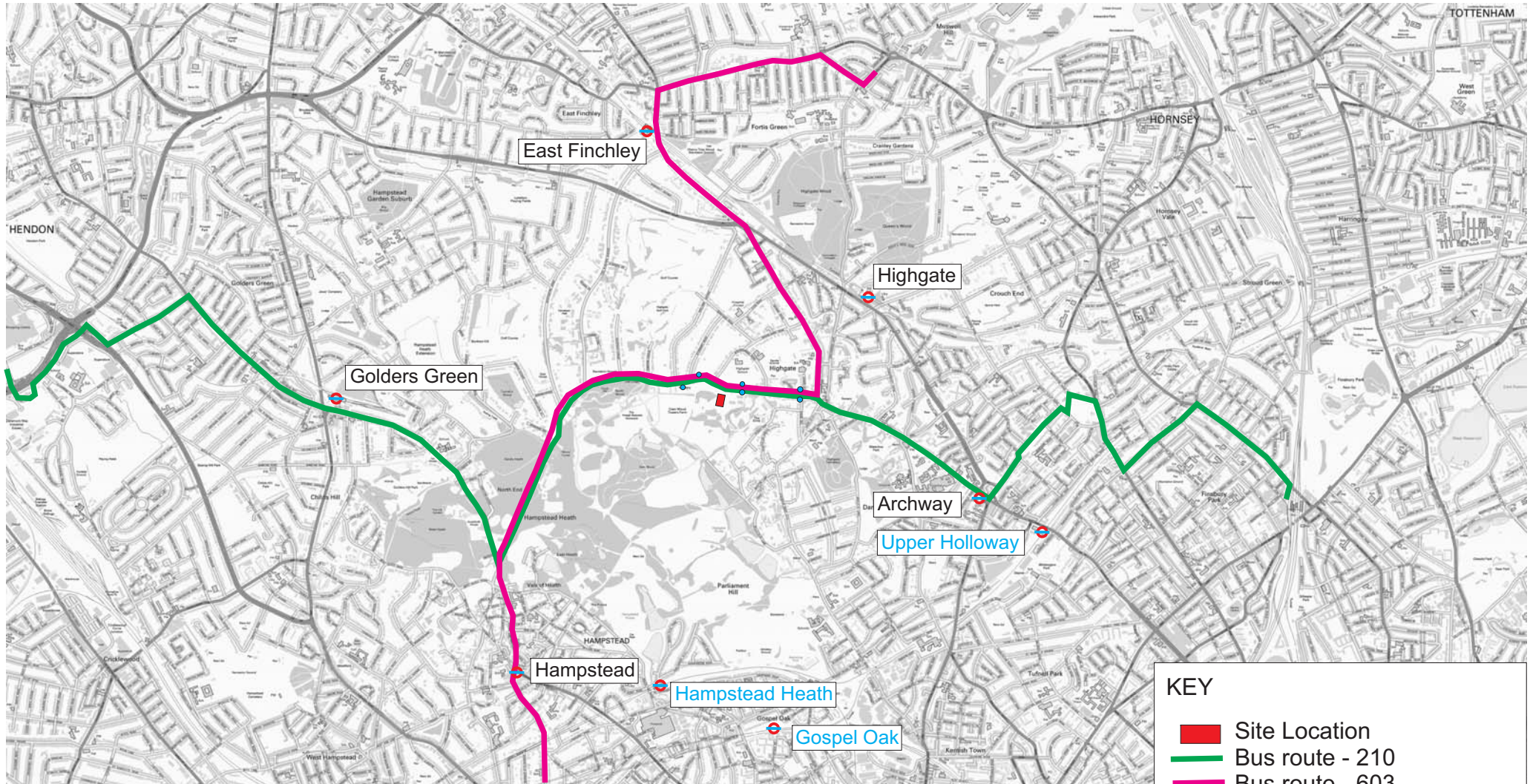


**KEY**

- Site Location
- Signed Routes on busier and quieter roads
- Recommended routes on quieter roads
- Off-road routes

<b>Cycle Routes</b>	Client <b>Athlone House Ltd</b>	<b>SKM COLIN BUCHANAN</b>		File Extension:
	Job Title <b>Athlone House</b>	Scale: N.T.S	Ckd/Appd: JT	Drg No: <b>Figure 2.1</b>
		Designed by: VW	1st Issued: October 2012	
		Drawn by: VW	Job No: Vn50162	





**KEY**

- Site Location
- Bus route - 210
- Bus route - 603
- Local bus stops
- Underground station
- Overground station

Public Transport	Client Athlone House Ltd	<b>SKM COLIN BUCHANAN</b>		File Extension:
	Job Title Athlone House	Scale: N.T.S	Ckd/Appd: JT	Drg No:  <b>Figure 2.2</b>
		Designed by: VW	1st Issued: October 2012	
		Drawn by: VW	Job No: Vn50162	

The 210 service links with Golders Green Underground Station to the west of Athlone House, approximately a 23 minute journey, and to Archway Underground Station to the east, approximately a 16 minute journey. The 603 service links to East Finchley Underground Station to the north of Athlone House and to Hampstead Underground Station to the south. East Finchley is approximately a 10 minute bus journey and Hampstead approximately 13 minutes.

Timetables for the above noted bus services are included in Appendix B.

#### 2.3.1 Underground services

As noted above, bus services from Athlone House link to local underground stations, all of which are serviced by the Northern Line, either the High Barnet route or Edgware route.

The closest underground station to the development is Highgate Station which is located to the northeast of the site, approximately 1.5km from the site. The Northern Line (High Barnet Route) operates through this station. The Northern Line links to Central London and a journey takes in the region of 20 minutes. The Northern Line operates services at a frequency of approximately 3-4 minutes throughout the day. The locations of the stations are shown on Figure 2.2.

#### 2.3.2 Overground Rail services

Hampstead Heath Rail Station is located approximately 2km directly to the south of site. This is indicated on Figure 2.2. The station provides overground rail links to Stratford in the east and Richmond and Clapham Junction to the west/south. Services depart approximately every 10 minutes in each direction from this station.

Hampstead Heath Station is approximately 40 minutes walk from Athlone House and can also be accessed via the network of cycle routes in the area. The most direct route being across Hampstead Heath. The station can also be accessed directly via the bus services referred to above.

#### 2.3.3 PTAL score

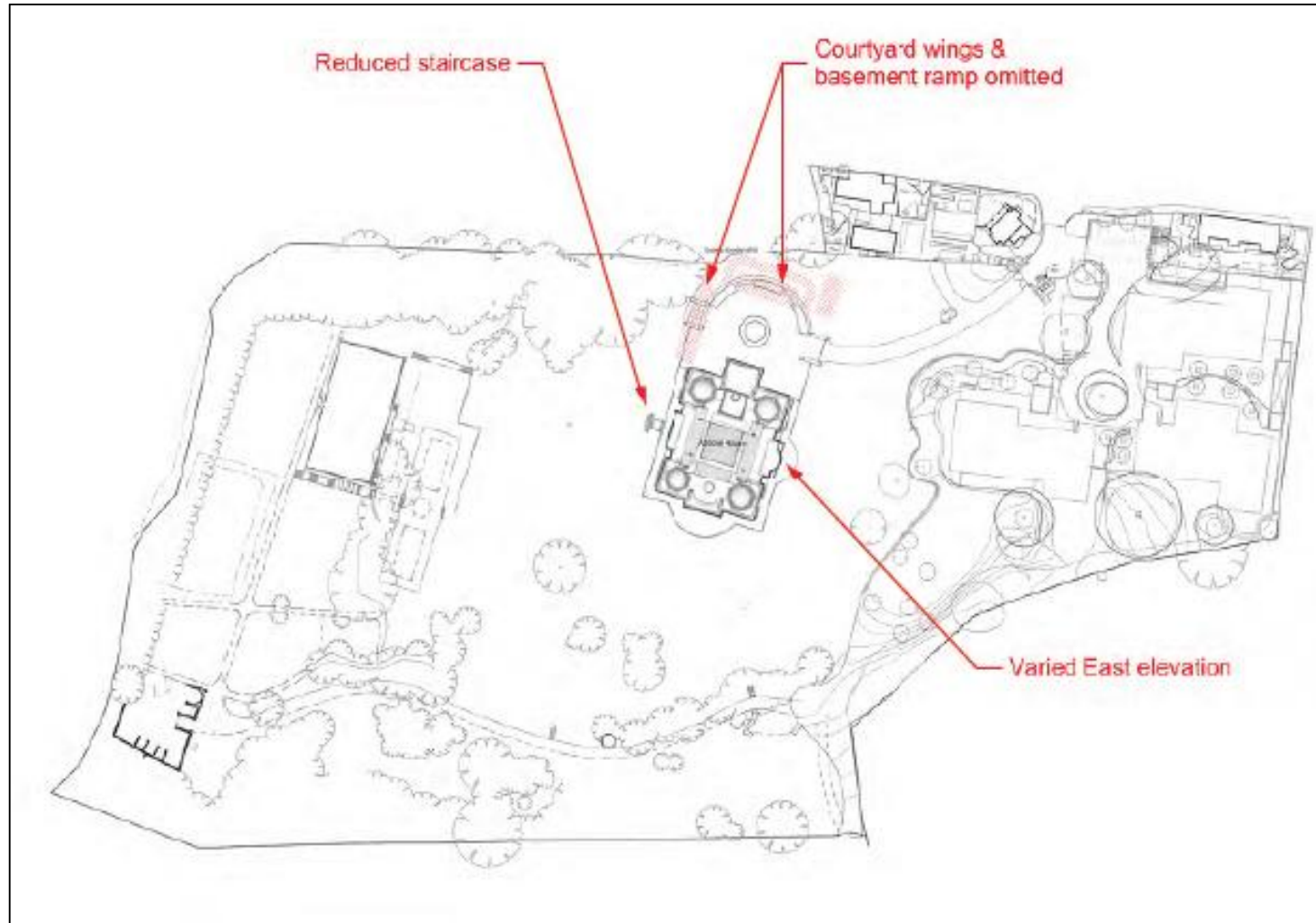
The site has a Public Transport Accessibility Level (PTAL) score of 1b. This score is noted as being very poor and has been established using the <http://www.webptals.org.uk/> website.

#### 2.4 Vehicular access

The existing vehicular access to Athlone House is from Hampstead Lane. Access is via a private access road which also serves Caenwood Court. The access meets Hampstead Lane in close proximity to the westbound bus stop. Access arrangements to Athlone House are shown in Figure 2.3.

Hampstead Lane is a single lane carriageway with two-way operation. It is subject to a 30mph speed limit. Hampstead Lane links via Highgate Hill to the A1 to the east and towards the A41, A46 and M1 to the west.

Figure 2.3: Site Access arrangements





### 3. Proposed development

#### 3.1 History of the Site

A previous planning application (ref 2009/3413/P) was submitted to the London Borough of Camden for the erection of an eight bedroom single dwelling house (Class C3) with ancillary staff and guest accommodation. A total of eighteen underground parking spaces were proposed.

The planning and conservation area consent applications were refused by Camden Borough Council and an appeal was subsequently lodged, which was later dismissed by the Inspector. However, the reasons for refusal solely relate to the potential impact on the surrounding Metropolitan Open Land. There were no transport reasons for refusal.

#### 3.2 This application

This Transport Statement supports a revised planning application for an eight bedroom dwelling on the proposed site. The application includes the provision of three parking spaces at basement level.

Figures 3.1 and 3.2 illustrate the development at the ground floor and basement level of the previous and proposed schemes. From these, the difference between the appeal and current planning application can be clearly seen, with the current scheme being reduced in scale from the previous application.

From a transport perspective, the revised scheme takes its access from the same location, Hampstead Lane. The highway impact of the new scheme will also be reduced as the guest and ancillary staff accommodation has been removed. The number of spaces has also been reduced from eighteen to three parking spaces in the basement plus three to four occasional spaces at ground level.



Figure 3.1: Consented and Current Planning application – ground floor level

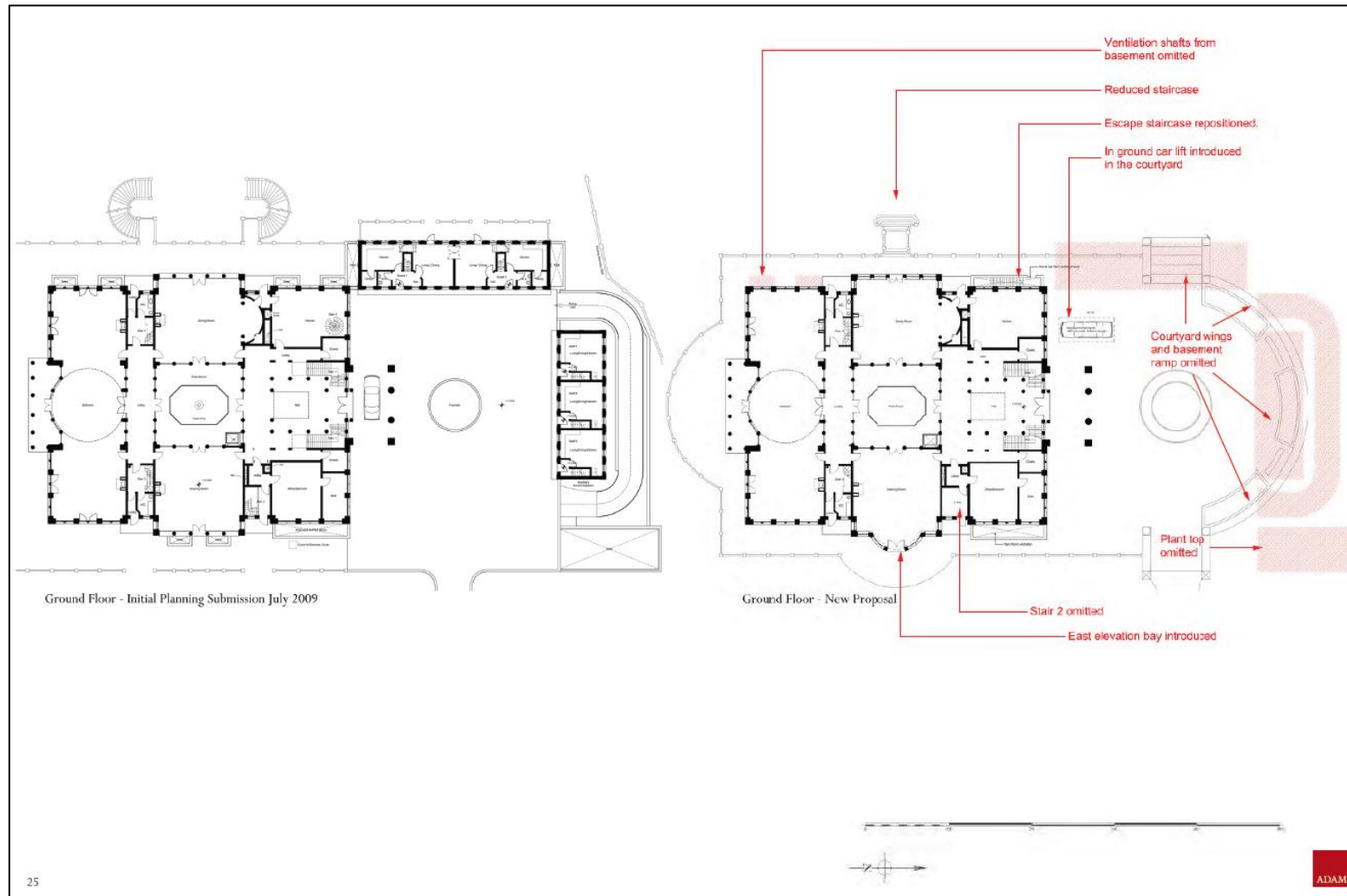
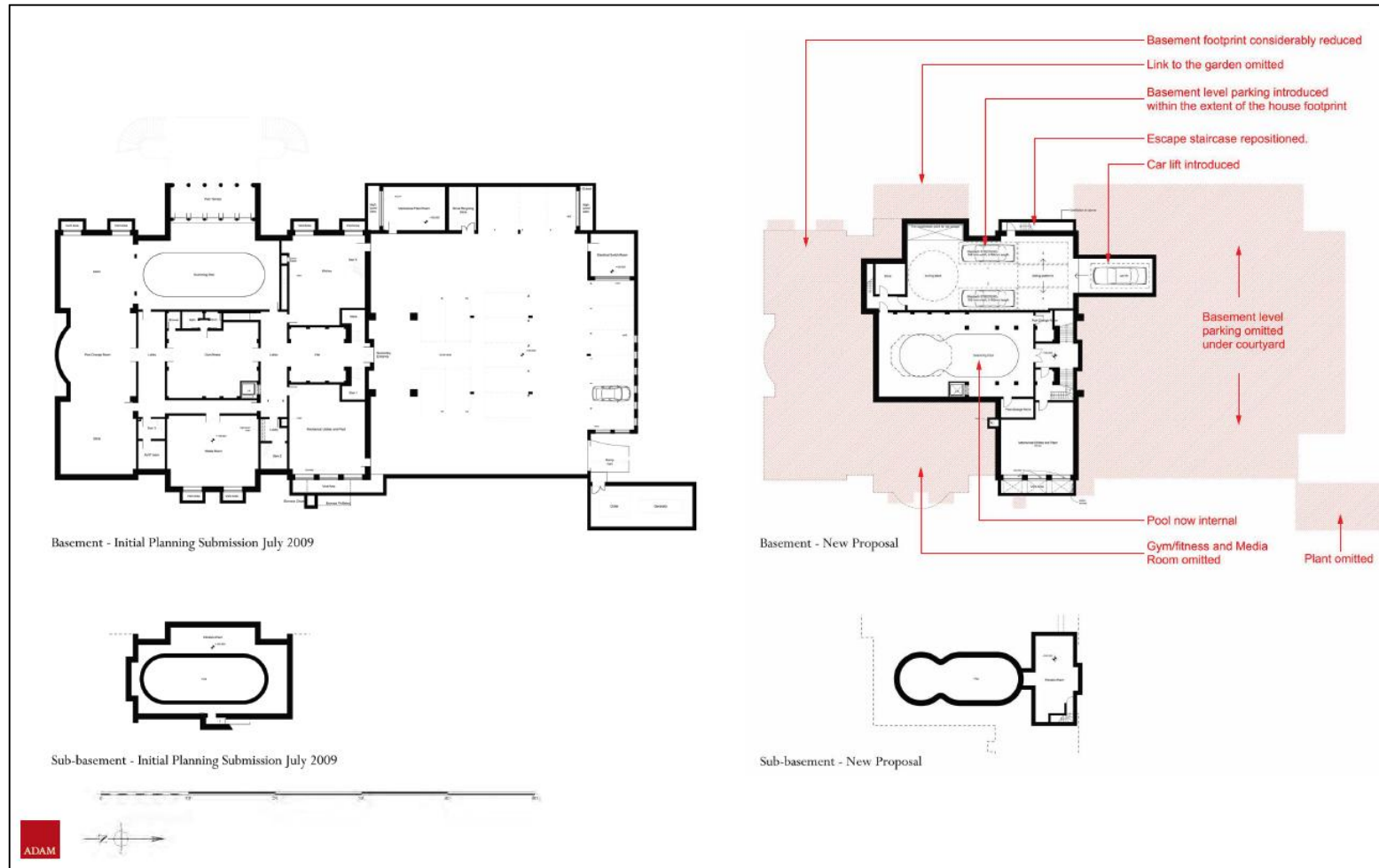


Figure 3.2: Consented and Current Planning application – basement level



### 3.3 Proposed site access and transport accessibility

#### 3.3.1 Site access and parking

Athlone House will be accessed via a private drive which will be gated. Athlone House will share access to Hampstead Lane with the Caenwood Court development. The existing access junction with Hampstead Lane is approximately 100m to the north of the building itself.

Three parking spaces will be provided at Athlone house as part of the redevelopment of the site. The spaces will be provided at basement level and accessed via a car lift from the courtyard on the northwest corner of the house.

Previous applications for the site have proposed a higher level of car parking for the development; the previous permission for fifteen parking spaces including six in a garage, and the previous application for eighteen parking spaces at basement level. The Officers Report for the previous application noted that the provision of eighteen spaces was “acceptable”, consequently the provision of three parking spaces in the basement plus three to four occasional spaces at ground level is considered to be an appropriate level of parking for the proposed development as it falls well below previous officer acceptance. Furthermore, as the spaces are provided at basement level this does not affect the visual impact of the development from the surrounding area.

Refuse vehicles will access the site via the access junction from Hampstead Lane. The refuse storage area will be located near to the access junction, close to the entrance of the Athlone House driveway.

#### 3.3.2 Cycling and walking

The proposed development will link to pedestrian footways and the cycle network in the vicinity of the site. Access will be via the private drive to Hampstead Lane. As discussed in Chapter 2, the site already benefits from good pedestrian and cycle facilities in the area.

There is suitable secure space in the basement area to accommodate cycle parking for the development, compliant with the London Plan parking standards as set out on the table below.

Table 3.1: London Plan Cycle Parking Standards

Use Class		Cycle parking standard
C3-C4	Dwellings (all)	1 per 1 or 2 bedroom dwelling for residents + 1 per 40 units for visitors 2 per 3+ bedroom dwelling for residents + 1 per 40 units for visitors

#### 3.3.3 Links to public transport

As noted, Athlone house has access to public transport services. Bus stops are located adjacent to the access to Athlone House approximately 100m from the development which is an acceptable walking distance to public transport.

Bus services 210 and 603 operate directly from the bus stops on Hampstead Lane. As identified, these services also link with underground services, specifically the Northern Line.



## 4. Traffic Impact

### 4.1 Trip generation

In order to forecast the trip generation of the proposed development, the TRAVL database has been examined. Surveys of suitable proxy sites in London, surveyed in the past 10 years for which trip rate data is available have been considered.

The parameters for deriving trip rates focussed upon sites with a low PTAL rating (similar to that of Athlone House) up to 2, a high ratio of bedrooms to units (a ratio above 2.5 bedrooms per unit), and the high ratio of parking spaces to units (a ratio above 1 space per unit). The results were limited, but the following two surveys were identified for the purposes of this TS.

- Kew Riverside (Private), Richmond, surveyed May 2006, PTAL 2, 400 units, 1033 bedrooms, 512 parking spaces; and
- Osier Crescent, Haringey, surveyed May 2007, PTAL 1, 116 units, 294 bedrooms, 270 parking spaces.

The person trip rates and forecast person trip generation, based on the number of bedrooms proposed, are provided in Table 4.1.

Table 4.1: Residential (C3) forecast person trip rates and trip generation

Time	Trip Rate In	Trip Rate Out	Forecast Arrivals	Forecast Departures
Weekday AM	0.0957	0.36	1	3
Weekday PM	0.2547	0.17	2	1

The surveys also allow a forecast of the modal split of person trips generated by the proposed residential land use, detailed in Table 4.2.

Table 4.2: Residential (C3) forecast modal split

Main mode of travel	Percentage Mode Share
Car driver	39.2%
Public transport	29.1%
Car passenger	13.8%
Walk only	13.4%
Pedal cycle	2.0%
Motor cycle	1.9%
Taxi	0.6%
Other	0.1%

The vehicle trip rates and forecast vehicle trip generation, based on the number of bedrooms proposed, are provided in Table 4.3.

Table 4.3: Residential (C3) forecast vehicle trip rates and trip generation

Time	Trip Rate In	Trip Rate Out	Forecast Arrivals	Forecast Departures
Weekday AM	0.041	0.120	0	1
Weekday PM	0.082	0.046	1	0

It is apparent from the forecast vehicle trip generation of the proposed development that the traffic impact of the scheme will be negligible. It is also apparent from the forecast person trip generation of the proposed development that the impact on surrounding public transport, pedestrian and cycling networks will also be negligible.

## 5. Summary and Conclusion

### 5.1 Summary

The Transport statement has reviewed trip generation from the proposed redevelopment of Athlone House, access to public transport, and considered parking and vehicular access arrangements.

The following is a summary of the proposed development and its impact on the transport network.

#### 5.1.1 Athlone House

Athlone House is located within the London Borough of Camden and is access from Hampstead Lane.

The proposed redevelopment of Athlone House is for an eight bedroom dwelling located on the site of the existing house. Three parking spaces are to be located in the basement plus three to four occasional spaces at ground level. It is smaller in scale that the previous application scheme.

#### 5.1.2 Site accessibility

Access to Athlone House is proposed via the existing priority junction with Hampstead Lane approximately 100m from the development. The access will be via a gated private drive.

The site has good links with the local walking and cycling networks. It is within close proximity of public transport, with eastbound and westbound bus stops located near to the access junction.

#### 5.1.3 Parking

Three parking spaces are to be provided at basement level and accessed via a car lift. The previous application for the site provided 18 parking spaces and this was noted as being acceptable in the officers report. Consequently the significant reduction in parking associated with the current application should therefore be appropriate for the proposed development.

#### 5.1.4 Trip generation and traffic impact

Trip generation from the site has been estimated using the TRAVL database. It is found that low numbers of person trips will impact on the local walking, cycling and public transport networks. A single vehicular trip from/to the site in the AM/PM peaks respectively has been estimated. This indicates that the site will have a negligible impact on the highway network.

5.2 Conclusion

It has been established that the proposed development will have negligible impact on the transport network.



## Appendix A: Policy Context

### National Policy

DfT White Paper, The Future of Transport – A Network for 2030

The Government White Paper on the Future of Transport – A Network for 2030 (July 2004) sets out the Government's long term aims for the transport network. It considers transport to be essential to the economy and the way we live, accepting that decisions taken now will have a lasting impact for decades to come.

At the local level, the Government's strategy includes:

- More reliable buses enjoying more road space.
- Demand responsive bus services that provide accessibility in areas that cannot support conventional services.
- Looking at ways to make services more accessible so that people have a real choice about when and how they travel.
- Promoting school/ workplace travel plans and personalised journey planning to encourage people to think about alternatives to the car.

National Planning Policy Framework, March 2012

The Department for Communities and Local Government's National Planning Policy Framework supersedes previous planning documentation such as PPG 13 and sets out the Government's planning policies for England and how these are expected to be applied.

The NPPF states that 'Planning law requires that applications for planning permission must be determined in accordance with the development plan' which includes the Local Plan and Neighbourhood Plans.

The document focuses on achieving and delivering sustainable development and Chapter 4 of the document addresses the promotion of sustainable transport specifically. Key points raised in this chapter relating to the proposed development include:

- All developments that generate significant amounts of movement should be supported by a Transport Statement or Transport Assessment. Plans and decisions should take account of whether:
  - The opportunities for sustainable transport modes have been taken up depending on the nature and location of the site, to reduce the need for major transport infrastructure.
  - Safe and suitable access to the site can be achieved for all people.
  - Improvements can be undertaken within the transport network that cost effectively limit the significant impacts of the development. Development should only be

prevented or refused on transport grounds where the residual cumulative impacts of development are severe.

- Plans and decisions should ensure developments that generate significant movement are located where the need to travel will be minimised and the use of sustainable transport modes can be maximised.
- Plans should protect and exploit opportunities for the use of sustainable transport modes for the movement of goods or people. Therefore, developments should be located and designed where practical to:
  - Accommodate the efficient delivery of goods and supplies.
  - Give priority to pedestrian and cycle movements, and have access to high quality public transport facilities.
  - Create safe and secure layouts which minimise conflicts between traffic and cyclists or pedestrians, avoiding street clutter.
  - Incorporate facilities for charging plug-in and other ultra-low emission vehicles.
  - Consider the needs of people with disabilities by all modes of transport.
- Developments which generate significant amounts of movement should be required to provide a Travel Plan.
- Parking standards are discussed and it is noted that local authorities should take account of accessibility, type of development, availability of public transport and car ownership levels.

### Regional Policy

Mayor of London's Spatial Development Strategy: The London Plan (2011)

The London Plan 2011 sets out the Mayor's vision for the development of London up to the year 2031. The Mayor's overarching vision for London is that it should (para 1.49):

*"excel among global cities – expanding opportunities for all its people and enterprises, achieving the highest environmental standards and quality of life and leading the world in its approach to tackling the urban challenges of the 21st century, particularly that of climate change."*

Enabling sustainable modes of transport is seen to support this vision. The Replacement Plan notes that London should be (objective 6):

*"A city where it is easy, safe and convenient for everyone to access jobs, opportunities and facilities with an efficient and effective transport system which actively encourages more walking and cycling and makes better use of the Thames, and supports delivery of all the objectives of this Plan."*

Policy 5.8 relates to the Mayor's support of innovative energy technologies and states the intention to work with boroughs and other partners to increase the uptake of electric and hydrogen fuel cell vehicles and provide the necessary infrastructure in new developments.

Strategically, the Mayor intends to (Policy 6.1):

- Encourage patterns of development that reduce the need to travel.
- Improve the capacity and accessibility of sustainable travel modes (i.e. public transport, walking and cycling).
- Support development with high levels of trips only in areas of high public transport access.
- Improve interchange between different forms of travel.
- Encourage the use of the River Thames for passenger and freight use.
- Minimise the impact of freight on the transport network.
- Encourage shifts to more sustainable forms of transport.
- Promote walking by ensuring an improved urban realm, amongst other things.

The Mayor's commitment to "improving the environment by encouraging more sustainable means of transport, through a cycling revolution, improving conditions for walking, and enhancement of public transport" (para. 6.2) is noted.

London Plan revised early minor alterations June 2012

The revised early minor alterations for the London Plan are currently out for public consultation. Transport is addressed in Chapter 6 of the document.

Paragraphs 6.35 and 6.36 amend text in the London Plan related to cycling and note that new developments should provide cycle parking and cycle changing facilities to encourage more cycling. This is iterated in Policy 6.9. Cycle parking standards are set out in Table 6.3 of the document.

Table A1: London Plan cycle parking standards

Use Class		Cycle parking standard
C3-C4	Dwellings (all)	1 per 1 or 2 bedroom dwelling for residents + 1 per 40 units for visitors 2 per 3+ bedroom dwelling for residents + 1 per 40 units for visitors

### Local Policy

Camden's Transport Strategy - Camden's Local Implementation Plan August 2011.

The Camden Transport Strategy (CTS) sets out the future direction for transport in Camden. Objectives are noted in the CTS and include:

- Reduce motor traffic levels and vehicle emissions to improve air quality, mitigate climate change and contribute to making Camden a 'low carbon and low waste borough'.
- Encourage healthy and sustainable travel choices by prioritising walking, cycling and public transport in Camden.
- Effectively manage the road network to manage congestion, improve reliability and ensure the efficient movement of goods and people.

- Ensure the transport system supports Camden's sustainable growth and regeneration as well as enhancing economic and community development.
- Ensure that the provision of parking is fair and proportionate by considering the needs of all users, whilst also encouraging sustainable travel choices.

A number of policies are set out in the CTS in order to deliver the objectives. Policies address encouraging travel by sustainable modes, the benefits of active travel and the impact on climate change. The shift to active travel modes is also noted to address congestion issues.

Specifically Policy 6.5 addresses developer contributions and notes '*Camden will ensure that contributions secured from developers can be used to deliver the policies and objectives outlined in this transport strategy and the LDF. Camden will seek flexibility within the legal agreements securing such contributions so that the funds are, where possible, not tied to a specific improvement. This means that as Camden policy and LIP objectives evolve over time the funding can still be used to deliver the current objectives at the time of implementation*'.

Camden Core Strategy 2010-2025 Local Development Framework

The Core strategy sets out the Council's planning vision and strategy for the borough. Four themes are noted and policies are aimed to meet these themes:

- A sustainable Camden that adapts to a growing population.
- A strong Camden economy that includes everyone.
- A connected Camden community where people lead active, healthy lives.
- A safe Camden that is a vibrant part of our world.

Policy CS11 outlines the promotion of sustainable and efficient travel. Through this policy, the Council aims to improve strategic transport infrastructure to support growth, promote sustainable travel and make private travel more sustainable.

Camden Development Policies 2010-25

Camden Development Polices forms part of the Council LDF, and is a group of documents setting out the planning strategy and polices. They will play a key part in delivering the overall vision and objectives for the Borough. Section 2 of the document sets out a number of transport related policies. These are a sub set of policy CS11 (Promoting sustainable and efficient travel) of the Core Strategy above. Those most relevant to Athlone House are:

- DP16 – The Transport implications of development: *The council will seek to ensure that development is properly integrated with the transport network and is supported by adequate walking, cycling and public transport links.*
- DP17 – Walking, cycling and public transport: *The Council will promote walking, cycling and public transport use. Development should make suitable provision for pedestrians, cyclists and public transport*
- DP18 – Parking standards and limiting the availability of car parking: *The Council will seek to ensure that developments provide the minimum necessary car parking provision.*



## Appendix B: Bus Timetables

# London Buses

# 210

Daily



Buses towards Brent Cross Shopping Centre



## Monday - Friday

First buses	6 to 7am	7am to 8pm	8pm to 1am	Last buses
0535 0550	0605 0620 0632 0644 0656	<i>about every</i> <b>7-10</b> <i>minutes</i>	<i>about every</i> <b>9-12</b> <i>minutes</i>	0111 0123

## Saturday (also Good Friday)

First buses	6 to 8am	8 to 9am	9am to 8pm	8pm to 1am	Last buses
0535 0550	At these 05 minutes 20 past the 35 hour 50	0805 0820 0832 0844 0854	<i>about every</i> <b>7-10</b> <i>minutes</i>	<i>about every</i> <b>11-12</b> <i>minutes</i>	0111 0123

## Sunday and other Public Holidays

First buses	8 to 9am	9 to 10am	10am to 7pm	7pm to 1am	Last buses
0705 0720 0735 0750	0805 0820 0835 0850	<i>about every</i> <b>10-12</b> <i>minutes</i>	<i>about every</i> <b>7-11</b> <i>minutes</i>	<i>about every</i> <b>10-12</b> <i>minutes</i>	0111 0123

Operated by Metroline for London Buses

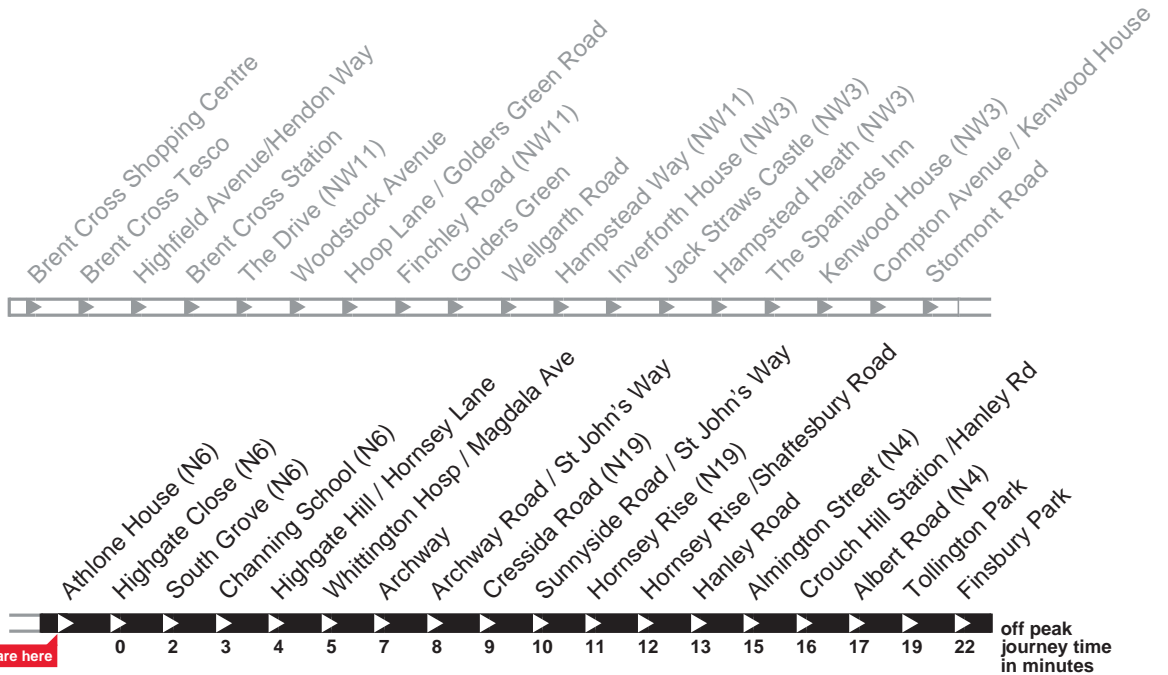
# London Buses

# 210

Daily



## Buses towards Finsbury Park



### Monday - Friday

First bus	5 to 6am	6am to 6pm	6 to 7pm	7 to 8pm	8pm to Midnight	Last buses
0454	0509 0524 0539 0551	<i>about every</i> <b>7-10</b> <i>minutes</i>	<i>about every</i> <b>5-8</b> <i>minutes</i>	1902 1910 1917 1925 1935 1945 1957	<i>about every</i> <b>10-12</b> <i>minutes</i>	0006 0018 0030 0042

### Saturday (also Good Friday)

First bus	5 to 7am	7 to 8am	8 to 9am	9am to 8pm	8pm to Midnight	Last buses
0454	At these 09 minutes 24 past the 39 hour 54	0709 0724 0739 0751	<i>about every</i> <b>9-12</b> <i>minutes</i>	<i>about every</i> <b>7-11</b> <i>minutes</i>	<i>about every</i> <b>12</b> <i>minutes</i>	0006 0018 0030 0042

### Sunday and other Public Holidays

First buses	7 to 8am	8 to 9am	9am to Midnight	Last buses
0624 0639 0654	0709 0724 0739 0754	0809 0824 0839 0853	<i>about every</i> <b>9-12</b> <i>minutes</i>	0006 0018 0030 0042

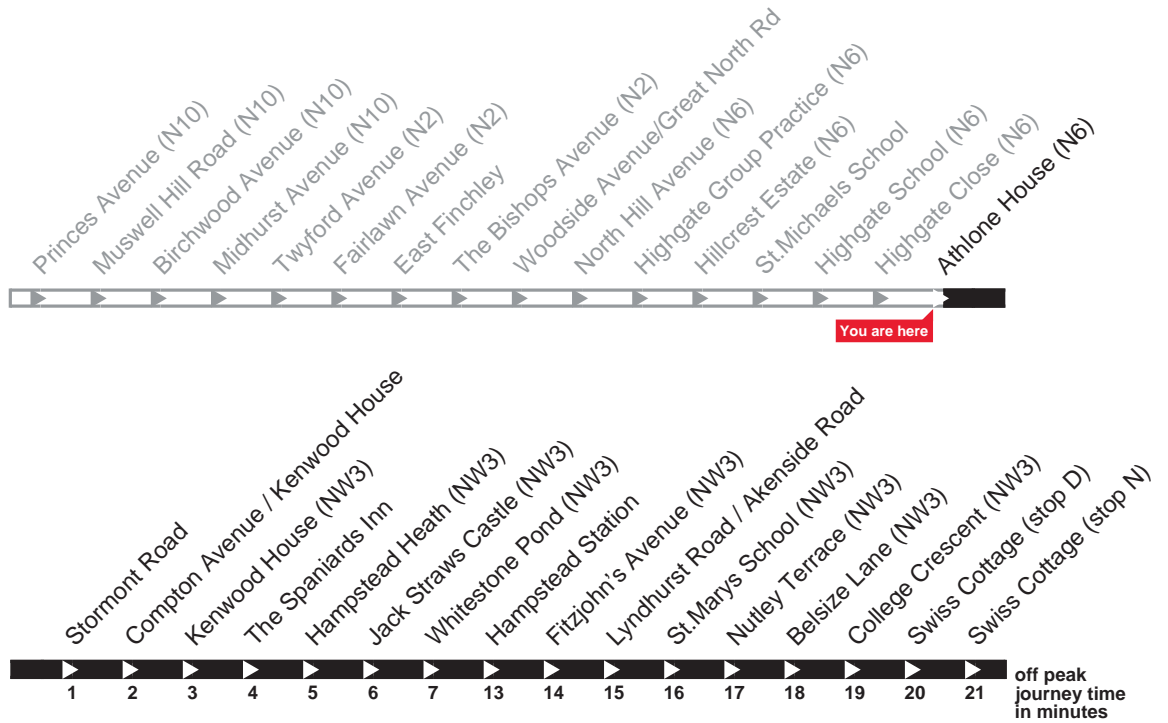
Operated by Metroline for London Buses

# 603

Monday - Friday



## Buses towards Swiss Cottage



## Monday - Friday

First bus	8 to 9am	Last buses
0750	0810	1529
		1549

Operated by Metroline for London Buses

# London Buses

# 603

Monday - Friday



## Buses towards Muswell Hill (N10)



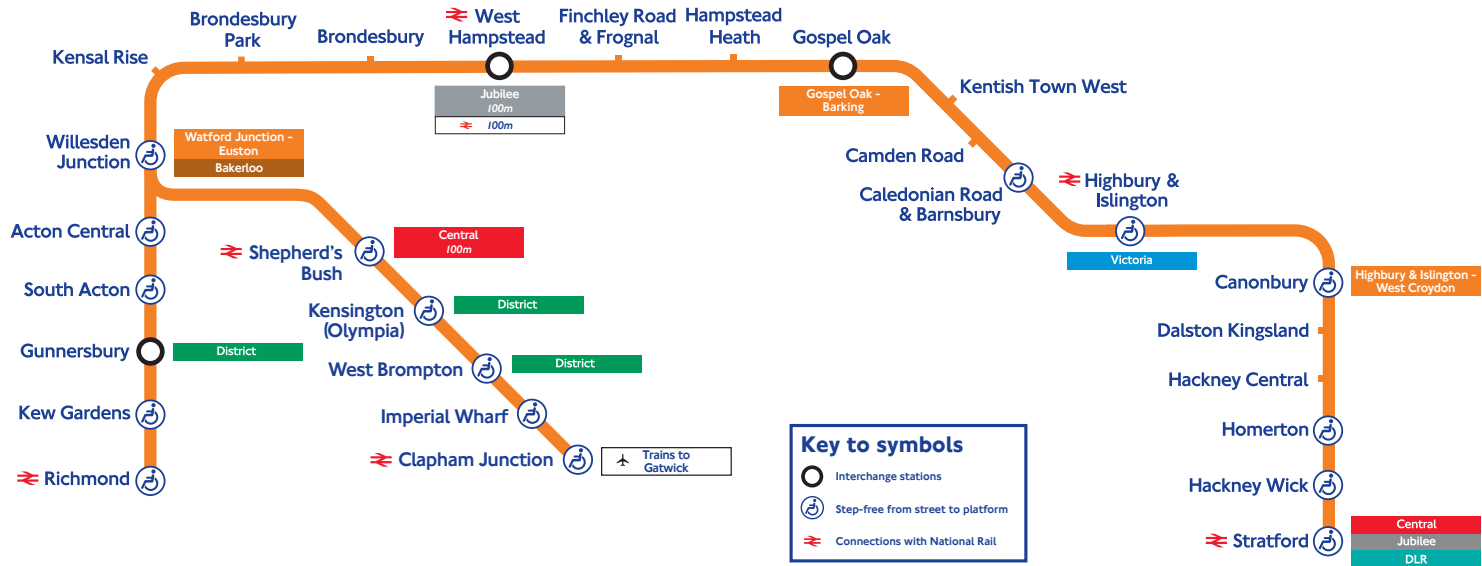
### Monday - Friday

First bus	9 to 10am	Last buses
0852	0912	1632
		1642

Operated by Metroline for London Buses



# Richmond / Clapham Junction – Stratford



# Eastbound towards Stratford

# Monday to Fridays

	SN A	SN B	LO	LO	LO	LO	LO	SN A	LO	LO	LO	LO	SN C	LO	LO	LO	LO	LO	LO	LO	SN C	LO	LO	LO	LO	LO	LO	SN D		
Richmond	⊕					0554	0609				0624		0637			0653		0706		0724		0736			0753		0808		0822	
Kew Gardens	⊖					0557	0612				0627		0640			0656		0709		0727		0739			0756		0811		0825	
Gunnersbury	⊕					0600	0615				0630		0643			0659		0712		0730		0742			0759		0814		0828	
South Acton						0603	0618				0633		0646			0702		0715		0733		0745			0802		0817		0831	
Acton Central						0606	0621				0636		0651			0706		0721		0736		0751			0806		0821		0836	
Clapham Junction		0503	0530			0547			0555	0614		0629		0638	0644		0659		0714		0729		0739	0744		0759		0809		0814
Imperial Wharf		0507	0539			0551			0600	0618		0633		0642	0648		0703		0718		0733		0744	0748		0803		0813		0818
West Brompton		0510	0541			0554			0603	0621		0636		0645	0651		0706		0721		0736		0747	0751		0806		0816		0821
Kensington (Olympia)		0514	0544			0557			0607	0624		0639		0649	0654		0709		0724		0739		0750	0754		0809		0819		0825
Shepherd's Bush		0517	0547			0559			0610	0626		0641		0652	0656		0711		0726		0741		0753	0756		0811		0821		0827
Willesden Junction	‡				0558b	0608	0612	0627		0635	0642	0650	0657		0705	0712	0720	0727	0735	0742	0750	0757		0806	0812	0820	0827	0835	0842	
Kensal Rise					0602		0614	0629		0637	0644	0652	0659		0707	0714	0722	0729	0737	0744	0752	0759		0808	0814	0822	0829	0838	0844	
Brondesbury Park					0604		0616	0631		0639	0646	0654	0701		0709	0716	0724	0731	0739	0746	0754	0801		0810	0816	0824	0831	0840	0846	
Brondesbury					0606		0618	0633		0641	0648	0656	0703		0711	0718	0726	0733	0741	0748	0756	0803		0812	0818	0826	0833	0841	0848	
West Hampstead					0608		0620	0635		0643	0650	0658	0705		0713	0720	0728	0735	0743	0750	0758	0805		0814	0820	0828	0835	0843	0850	
Finchley Road & Frognal					0609		0621	0636		0644	0651	0659	0706		0714	0721	0729	0736	0744	0751	0759	0806		0815	0821	0829	0836	0845	0851	
Hampstead Heath					0612		0624	0639		0647	0654	0702	0709		0717	0724	0732	0739	0747	0754	0802	0809		0818	0824	0832	0839	0847	0854	
Gospel Oak					0614		0626	0641		0649	0656	0704	0711		0719	0726	0734	0741	0749	0756	0804	0811		0820	0826	0834	0841	0851	0856	
Kentish Town West					0616		0628	0643		0651	0658	0706	0713		0721	0728	0736	0743	0751	0758	0806	0813		0822	0828	0836	0843	0853	0858	
Camden Road				0611	0620		0632	0647		0655	0702	0710	0717		0725	0732	0740	0747	0755	0802	0810	0817		0826	0832	0840	0847	0856	0902	
Caledonian Road & Barnsbury				0614	0623		0635	0650		0658	0705	0713	0720		0728	0735	0743	0750	0758	0805	0813	0820		0829	0835	0843	0850	0859	0905	
Highbury & Islington				0616	0626		0638	0653		0701	0708	0716	0723		0731	0738	0746	0753	0801	0808	0816	0823		0832	0838	0846	0853	0902	0908	
Canonbury				0618	0628		0640	0655		0703	0710	0718	0725		0733	0740	0748	0755	0803	0810	0818	0825		0834	0840	0848	0855	0904	0910	
Dalston Kingsland				0620	0630		0642	0657		0705	0712	0720	0727		0735	0742	0750	0757	0805	0812	0820	0827		0836	0842	0850	0857	0906	0912	
Hackney Central				0622	0632		0644	0659		0707	0714	0722	0729		0737	0744	0752	0759	0807	0814	0822	0829		0838	0844	0852	0859	0908	0914	
Homerton				0624	0634		0646	0701		0709	0716	0724	0731		0739	0746	0754	0801	0809	0816	0824	0831		0840	0846	0854	0901	0910	0916	
Hackney Wick				0626	0636		0648	0703		0711	0718	0726	0733		0741	0748	0756	0803	0811	0818	0826	0833		0842	0848	0856	0903	0913	0918	
Stratford				0632	0644		0655	0710		0718	0725	0733	0739		0748	0755	0803	0809	0818	0825	0833	0839		0849	0854	0903	0909	0918	0929	

# Eastbound towards Stratford

# Mondays to Fridays

	LO	LO	SN E	LO	LO	SN	LO	LO	SN F	LO	LO	SN	LO	LO	SN E	LO	LO	LO	LO	LO	LO	LO	LO	SN G	LO	LO	LO	LO	LO					
Richmond	⊖		0836						0910						0936				0957		1008			1028			1038			1058			1108	
Kew Gardens	⊖		0839						0913						0939				1000		1011			1031			1041			1101			1111	
Gunnersbury	⊖		0842						0916						0942				1003		1014			1034			1044			1104			1114	
South Acton			0845						0919						0945				1006		1017			1037			1047			1107			1117	
Acton Central			0851						0922						0950				1010		1020			1040			1050			1110			1120	
Clapham Junction		0829		0839	0844		0848	0859		0905	0915		0924	0930		0939	0945		1000				1015			1030			1039	1045		1100		1115
Imperial Wharf		0833		0844	0848		0852	0903		0909	0919		0928	0934		0944	0949		1004				1019			1036			1044	1049		1104		1119
West Brompton		0836		0847	0851		0855	0906		0912	0922		0931	0937		0947	0952		1007				1022			1039			1047	1052		1107		1122
Kensington (Olympia)		0839		0850	0854		0859	0909		0915	0925		0935	0940		0950	0955		1010				1025			1042			1050	1055		1110		1125
Shepherd's Bush		0841		0853	0856		0901	0911		0918	0927		0937	0942		0953	0957		1012				1027			1044			1053	1057		1112		1127
Willesden Junction	‡	0850	0857		0906	0913		0920	0928		0936	0946		0951	0956		1006	1016	1021	1026	1036	1046	1051	1056			1106	1116	1121	1126	1136	1146	1156	
Kensal Rise		0852	0859		0908	0915		0924	0930		0938	0948			0958		1008	1018		1028	1038	1048		1058			1108	1118		1128	1138	1148	1158	
Brondesbury Park		0854	0901		0910	0917		0926	0932		0940	0950			1000		1010	1020		1030	1040	1050		1100			1110	1120		1130	1140	1150		
Brondesbury		0856	0903		0912	0919		0927	0934		0942	0952			1002		1012	1022		1032	1042	1052		1102			1112	1122		1132	1142	1152		
West Hampstead		0858	0905		0914	0921		0930	0936		0944	0954			1004		1014	1024		1034	1044	1054		1104			1114	1124		1134	1144	1154		
Finchley Road & Frognal		0859	0906		0915	0922		0931	0937		0945	0955			1005		1015	1025		1035	1045	1055		1105			1115	1125		1135	1145	1155		
Hampstead Heath		0902	0909		0918	0925		0934	0940		0948	0958			1008		1018	1028		1038	1048	1058		1108			1118	1128		1138	1148	1158		
Gospel Oak		0904	0911		0920	0927		0936	0942		0950	1000			1010		1020	1030		1040	1050	1100		1110			1120	1130		1140	1150			
Kentish Town West		0906	0913		0922	0929		0938	0944		0952	1002			1012		1022	1032		1042	1052	1102		1112			1122	1132		1142	1152			
Camden Road		0910	0917		0926	0933		0942	0948		0956	1006			1016		1026	1036		1046	1056	1106		1116			1126	1136		1146	1156			
Caledonian Road & Barnsbury		0913	0920		0929	0936		0945	0951		0959	1009			1019		1029	1039		1049	1059	1109		1119			1129	1139		1149	1159			
Highbury & Islington		0916	0923		0932	0939		0948	0954		1002	1012			1022		1032	1042		1052	1102	1112		1122			1132	1142		1152	1202			
Canonbury		0918	0925		0934	0941		0950	0956		1004	1014			1024		1034	1044		1054	1104	1114		1124			1134	1145		1154	1204			
Dalston Kingsland		0920	0927		0936	0943		0952	0958		1006	1016			1026		1036	1046		1056	1106	1116		1126			1136	1147		1156	1206			
Hackney Central		0922	0929		0938	0945		0954	1000		1008	1018			1028		1038	1048		1058	1108	1118		1128			1138	1149		1158	1208			
Homerton		0924	0931		0940	0947		0956	1002		1010	1020			1030		1040	1050		1100	1110	1120		1130			1140	1151		1200	1210			
Hackney Wick		0926	0933		0942	0949		0958	1004		1012	1022			1032		1042	1052		1102	1112	1122		1132			1142	1153		1202	1212			
Stratford		0933	0938		0950	0955		1005	1010		1019	1028			1038		1049	1058		1109	1119	1129		1139			1149	1159		1209	1219			

# Eastbound towards Stratford

# Mondays to Fridays

	LO	LO	LO	SN G	LO	LO	LO	LO	LO	LO	LO	LO	SN G	LO	LO	LO	LO	LO	LO	LO	SN G	LO	LO	LO	LO	LO	LO		
Richmond	⊕ 1128		1138			1158		1208		1228		1238			1258		1308		1328		1338			1358		1410		1428	
Kew Gardens	⊖ 1131		1141			1201		1211		1231		1241			1301		1311		1331		1341			1401		1413		1431	
Gunnersbury	⊖ 1134		1144			1204		1214		1234		1244			1304		1314		1334		1344			1404		1416		1434	
South Acton			1137			1207		1217		1237		1247			1307		1317		1337		1347			1407		1419		1437	
Acton Central			1140			1210		1220		1240		1250			1310		1320		1340		1350			1410		1422		1440	
Clapham Junction		1130		1139	1145		1200		1215		1230		1239	1245		1300		1315		1330		1339	1345		1400		1415		1430
Imperial Wharf		1134		1144	1149		1204		1219		1235		1244	1249		1304		1319		1336		1344	1349		1404		1419		1434
West Brompton		1137		1147	1152		1207		1222		1238		1247	1252		1307		1322		1339		1347	1352		1407		1422		1437
Kensington (Olympia)		1140		1150	1155		1210		1225		1241		1250	1255		1310		1325		1342		1350	1355		1410		1425		1440
Shepherd's Bush		1142		1153	1157		1212		1227		1243		1253	1257		1312		1327		1344		1353	1357		1412		1427		1442
Willesden Junction	‡ 1146	1151	1156		1206	1216	1221	1226	1236	1246	1251	1256		1306	1316	1321	1326	1336	1346	1351	1356		1406	1416	1421	1428	1436	1446	1451
Kensal Rise		1148		1158		1208	1218		1228	1238	1248		1258		1308	1318		1328	1338	1348		1358		1408	1418		1430	1438	1448
Brondesbury Park		1150		1200		1210	1220		1230	1240	1250		1300		1310	1320		1330	1340	1350		1400		1410	1420		1432	1440	1450
Brondesbury		1152		1202		1212	1222		1232	1242	1252		1302		1312	1322		1332	1342	1352		1402		1412	1422		1434	1442	1452
West Hampstead		1154		1204		1214	1224		1234	1244	1254		1304		1314	1324		1334	1344	1354		1404		1414	1424		1436	1444	1454
Finchley Road & Frognal		1155		1205		1215	1225		1235	1245	1255		1305		1315	1325		1335	1345	1355		1405		1415	1425		1437	1445	1455
Hampstead Heath		1158		1208		1218	1228		1238	1248	1258		1308		1318	1328		1338	1348	1358		1408		1418	1428		1440	1448	1458
Gospel Oak		1200		1210		1220	1230		1240	1250	1300		1310		1320	1330		1340	1350	1400		1410		1420	1430		1442	1450	1500
Kentish Town West		1202		1212		1222	1232		1242	1252	1302		1312		1322	1332		1342	1352	1402		1412		1422	1432		1444	1452	1502
Camden Road		1206		1216		1226	1236		1246	1256	1306		1316		1326	1336		1346	1356	1406		1416		1426	1436		1448	1456	1506
Caledonian Road & Barnsbury		1209		1219		1229	1239		1249	1259	1309		1319		1329	1339		1349	1359	1409		1419		1429	1439		1451	1459	1509
Highbury & Islington		1212		1222		1232	1242		1252	1302	1312		1322		1332	1342		1352	1402	1412		1422		1432	1442		1454	1502	1512
Canonbury		1214		1224		1234	1244		1254	1304	1314		1324		1334	1345		1354	1404	1414		1424		1434	1444		1456	1504	1514
Dalston Kingsland		1216		1226		1236	1246		1256	1306	1316		1326		1336	1347		1356	1406	1416		1426		1436	1446		1458	1506	1516
Hackney Central		1218		1228		1238	1248		1258	1308	1318		1328		1338	1349		1358	1408	1418		1428		1438	1448		1500	1508	1518
Homerton		1220		1230		1240	1250		1300	1310	1320		1330		1340	1351		1400	1410	1420		1430		1440	1450		1502	1510	1520
Hackney Wick		1222		1232		1242	1252		1302	1312	1322		1333		1342	1353		1402	1412	1422		1432		1442	1452		1504	1512	1522
Stratford		1229		1239		1251	1259		1309	1319	1329		1339		1349	1359		1409	1419	1429		1439		1449	1459		1512	1519	1530

# Eastbound towards Stratford

# Monday to Fridays

	LO	SN G	LO	LO	LO	LO	LO	LO	LO	LO	SN G	LO	LO	LO	LO	LO	LO	SN H	LO	LO	SN G	LO	LO	SN	LO	LO	LO	LO	SN	
Richmond	⊕ 1438			1458		1508		1526		1538			1553		1609		1623				1636			1653			1706		1723	
Kew Gardens	⊕ 1441			1501		1511		1529		1541			1556		1612		1626				1639			1656			1709		1726	
Gunnersbury	⊕ 1444			1504		1514		1532		1544			1559		1615		1629				1642			1659			1712		1729	
South Acton	1447			1507		1517		1535		1547			1602		1618		1632				1645			1702			1715		1732	
Acton Central	1450			1510		1520		1538		1550			1606		1621		1636				1651			1706			1721		1736	
Clapham Junction		1439	1445		1500		1515		1530		1539	1544		1559		1614				1629		1639	1644		1649	1659		1714		1720
Imperial Wharf		1444	1455		1504		1519		1534		1544	1549		1603		1618		1624	1633		1644	1648		1653	1703		1718		1724	
West Brompton		1447	1458		1507		1522		1537		1547	1552		1606		1621		1626	1636		1647	1651		1656	1706		1721		1727	
Kensington (Olympia)		1450	1501		1510		1525		1540		1550	1555		1609		1624		1629	1639		1650	1654		1659	1709		1724		1730	
Shepherd's Bush		1453	1503		1512		1527		1542		1553	1557		1611		1626			1641		1653	1656			1711		1726		1732	
Willesden Junction	‡ 1456		1511	1516	1521	1526	1536	1545	1551	1556		1606	1612	1620	1627	1635	1642		1650	1657		1705	1712		1720	1727	1735	1742		
Kensal Rise	1458		1514	1518		1528	1538	1547		1558		1608	1614	1622	1629	1637	1644		1652	1659		1707	1714		1722	1729	1737	1744		
Brondesbury Park	1500		1516	1520		1530	1540	1549		1600		1610	1616	1624	1631	1640	1646		1654	1701		1709	1716		1724	1731	1739	1746		
Brondesbury	1502		1517	1522		1532	1542	1551		1602		1612	1618	1626	1633	1641	1648		1656	1703		1711	1718		1726	1733	1741	1748		
West Hampstead	1504		1519	1524		1534	1544	1553		1604		1614	1620	1628	1635	1643	1650		1658	1705		1713	1720		1728	1735	1743	1750		
Finchley Road & Frognal	1505		1521	1525		1535	1545	1554		1605		1615	1621	1629	1636	1644	1651		1659	1706		1714	1721		1729	1736	1744	1751		
Hampstead Heath	1508		1523	1528		1538	1548	1557		1608		1618	1624	1632	1639	1647	1654		1702	1709		1717	1724		1732	1739	1747	1754		
Gospel Oak	1510		1526	1530		1540	1550	1600		1610		1620	1626	1634	1641	1649	1656		1704	1711		1719	1726		1734	1741	1749	1756		
Kentish Town West	1512		1528	1532		1542	1552	1602		1612		1622	1628	1636	1643	1651	1658		1706	1713		1721	1728		1736	1743	1751	1758		
Camden Road	1516		1532	1536		1546	1556	1605		1616		1626	1632	1640	1647	1655	1702		1710	1717		1725	1732		1740	1747	1755	1802		
Caledonian Road & Barnsbury	1519		1535	1539		1549	1559	1608		1619		1629	1635	1643	1650	1658	1705		1713	1720		1728	1735		1743	1750	1758	1805		
Highbury & Islington	1522		1538	1542		1552	1602	1611		1622		1632	1638	1646	1653	1701	1708		1716	1723		1731	1738		1746	1753	1801	1808		
Canonbury	1524		1540	1544		1554	1604	1613		1624		1634	1640	1648	1655	1703	1710		1718	1725		1733	1740		1748	1755	1803	1810		
Dalston Kingsland	1526		1542	1546		1556	1606	1615		1626		1636	1642	1650	1657	1705	1712		1720	1727		1735	1742		1750	1757	1805	1812		
Hackney Central	1528		1544	1548		1558	1608	1617		1628		1638	1644	1652	1659	1707	1714		1722	1729		1737	1744		1752	1759	1807	1814		
Homerton	1530		1546	1550		1600	1610	1619		1630		1640	1646	1654	1701	1709	1716		1724	1731		1739	1746		1754	1801	1809	1816		
Hackney Wick	1532		1549	1552		1602	1612	1621		1632		1642	1648	1656	1703	1711	1718		1726	1733		1741	1748		1756	1803	1811	1818		
Stratford	1539		1554	1600		1609	1619	1627		1639		1648	1654	1703	1710	1718	1724		1733	1738		1750	1754		1805	1808	1820	1824		

# Eastbound towards Stratford

# Monday to Fridays

	LO	LO	SN G	LO	LO	LO	LO	LO	LO	LO	LO	SN E	LO	LO	LO	LO	LO	LO	LO	SN E	LO	LO	LO	LO	LO	LO	LO													
Richmond	⊖		1736			1753			1806			1822			1836			1854			1909			1926			1941			1956			2011			2026			2040	
Kew Gardens	⊖		1739			1756			1809			1826			1839			1857			1912			1929			1944			1959			2014			2029			2043	
Gunnersbury	⊖		1742			1759			1812			1829			1842			1900			1915			1932			1947			2002			2017			2032			2046	
South Acton			1745			1802			1815			1831			1845			1903			1918			1935			1950			2005			2020			2035			2049	
Acton Central			1751			1806			1821			1834			1851			1906			1923			1940			1954			2008			2023			2040			2052	
Clapham Junction		1729		1739	1744			1759			1814			1829			1839	1844			1859			1915			1930			1939	1945			2000			2015			2030
Imperial Wharf		1733		1744	1748			1803			1818			1833			1844	1848			1903			1919			1934			1944	1949			2004			2019			2034
West Brompton		1736		1747	1751			1806			1821			1836			1847	1851			1906			1922			1937			1947	1952			2007			2022			2037
Kensington (Olympia)		1739		1750	1754			1809			1824			1839			1850	1854			1909			1925			1940			1950	1955			2010			2025			2040
Shepherd's Bush		1741		1753	1756			1811			1826			1841			1853	1856			1911			1927			1942			1953	1957			2012			2027			2042
Willesden Junction	‡	1750	1757		1805	1812	1820	1827	1835	1840	1850	1857		1905	1912	1920	1929	1936	1946	1951	2000			2006	2016	2021			2006	2016	2021	2029	2036	2046	2051			2059		
Kensal Rise		1752	1759		1807	1814	1822	1829	1837	1843	1852	1859		1907	1914	1922	1931	1938	1948			2002			2008	2018			2008	2018			2031	2038	2048			2101		
Brondesbury Park		1754	1801		1809	1816	1824	1831	1839	1845	1854	1901		1909	1916	1924	1933	1940	1950			2004			2010	2020			2010	2020			2033	2040	2050			2103		
Brondesbury		1756	1803		1811	1818	1826	1833	1841	1846	1856	1903		1911	1918	1926	1935	1942	1952			2006			2012	2022			2012	2022			2035	2042	2052			2105		
West Hampstead		1758	1805		1813	1820	1828	1835	1843	1848	1858	1905		1913	1920	1928	1937	1944	1954			2008			2014	2024			2014	2024			2037	2044	2054			2107		
Finchley Road & Frognal		1759	1806		1814	1821	1829	1836	1844	1850	1859	1906		1914	1921	1929	1938	1945	1955			2009			2015	2025			2015	2025			2038	2045	2055			2108		
Hampstead Heath		1802	1809		1817	1824	1832	1839	1847	1852	1902	1909		1917	1924	1932	1941	1948	1958			2012			2018	2028			2018	2028			2041	2048	2058			2111		
Gospel Oak		1804	1811		1819	1826	1834	1841	1849	1855	1904	1911		1919	1926	1934	1943	1950	2000			2014			2020	2030			2020	2030			2043	2050	2100			2113		
Kentish Town West		1806	1813		1821	1828	1836	1843	1851	1857	1906	1913		1921	1928	1936	1945	1952	2002			2016			2022	2032			2022	2032			2045	2052	2102			2115		
Camden Road		1810	1817		1825	1832	1840	1847	1855	1900	1910	1917		1925	1932	1940	1949	1956	2006			2020			2026	2036			2026	2036			2049	2056	2106			2119		
Caledonian Road & Barnsbury		1813	1820		1828	1835	1844	1850	1858	1903	1913	1920		1928	1935	1943	1952	1959	2009			2023			2029	2039			2029	2039			2052	2059	2109			2122		
Highbury & Islington		1816	1823		1831	1838	1846	1853	1901	1906	1916	1923		1931	1938	1946	1955	2002	2012			2026			2033	2042			2033	2042			2055	2102	2112			2125		
Canonbury		1818	1825		1833	1840	1848	1855	1903	1908	1918	1925		1933	1940	1948	1957	2004	2014			2028			2035	2044			2035	2044			2057	2104	2114			2127		
Dalston Kingsland		1820	1827		1835	1842	1850	1857	1905	1910	1920	1927		1935	1942	1950	1959	2006	2016			2030			2037	2046			2037	2046			2059	2106	2116			2129		
Hackney Central		1822	1829		1837	1844	1852	1859	1907	1912	1922	1929		1937	1944	1952	2001	2008	2018			2032			2039	2048			2039	2048			2101	2108	2118			2131		
Homerton		1824	1831		1839	1846	1854	1901	1909	1914	1924	1931		1939	1946	1954	2003	2010	2020			2034			2041	2050			2041	2050			2103	2110	2120			2133		
Hackney Wick		1826	1833		1841	1848	1856	1903	1911	1917	1926	1933		1941	1948	1956	2005	2012	2022			2036			2043	2052			2043	2052			2105	2112	2122			2135		
Stratford		1835	1839		1850	1854	1905	1908	1920	1923	1933	1940		1948	1955	2003	2011	2019	2028			2042			2051	2058			2051	2058			2111	2119	2128			2141		



# Eastbound towards Stratford

# Mondays to Fridays

	SN C	LO	LO	LO	LO	LO	LO	LO	LO	SN A	LO	LO	LO	LO	LO	LO	SN A	LO	LO	LO	LO	LO	
Richmond	⊖		2058		2110		2128		2138					2228					2300		2328		
Kew Gardens	⊖		2101		2113		2131		2141					2231					2303		2331		
Gunnersbury	⊖		2104		2116		2134		2144					2234					2306		2334		
South Acton			2107		2119		2137		2147					2237					2309		2337		
Acton Central			2110		2123		2140		2150					2240					2312		2340		
Clapham Junction		2039	2045		2100		2115		2130		2139	2145		2200	2215		2230	2239	2245		2300		2330
Imperial Wharf		2044	2049		2104		2119		2134		2144	2149		2204	2219		2234	2244	2249		2304		2334
West Brompton		2047	2052		2107		2122		2137		2147	2152		2207	2222		2237	2247	2252		2307		2337
Kensington (Olympia)		2050	2055		2110		2125		2140		2150	2155		2210	2225		2240	2250	2255		2310		2340
Shepherd's Bush		2053	2057		2112		2127		2142		2153	2157		2212	2227		2242	2253	2257		2312		2342
Willesden Junction	‡		2106	2117	2121	2129	2136	2146	2151	2156		2206	2216	2221	2236	2246	2251		2306	2318	2322	2345	2351
Kensal Rise			2108	2119		2131	2138	2148		2158		2208	2218			2248				2320			
Brondesbury Park			2110	2121		2133	2140	2150		2200		2210	2220			2250				2322			
Brondesbury			2112	2123		2135	2142	2152		2202		2212	2222			2252				2324			
West Hampstead			2114	2125		2137	2144	2154		2204		2214	2224			2254				2326			
Finchley Road & Frognal			2115	2126		2138	2145	2155		2205		2215	2225			2255				2327			
Hampstead Heath			2118	2129		2141	2148	2158		2208		2218	2228			2258				2330			
Gospel Oak			2120	2130		2143	2150	2200		2210		2220	2230			2300				2332			
Kentish Town West			2122	2132		2145	2152	2202		2212		2222	2232			2302				2334			
Camden Road			2126	2136		2149	2156	2206		2216		2226	2236			2306				2338			
Caledonian Road & Barnsbury			2129	2139		2152	2159	2209		2219		2229	2239			2309				2341			
Highbury & Islington			2132	2142		2155	2202	2212		2222		2232	2242			2312				2344			
Canonbury			2134	2144		2157	2204	2214		2224		2234	2244			2314				2346			
Dalston Kingsland			2136	2146		2159	2206	2216		2226		2236	2246			2316				2348			
Hackney Central			2138	2148		2201	2208	2218		2228		2238	2248			2318				2350			
Homerton			2140	2150		2203	2210	2220		2230		2240	2250			2320				2352			
Hackney Wick			2142	2152		2205	2212	2222		2232		2242	2252			2322				2354			
Stratford			2149	2159		2213	2219	2229		2239		2249	2258			2329				0001			

# Eastbound towards Stratford

# Saturdays

8

	SN A	SN B	LO	LO	LO	LO	SN A	LO	LO	LO	LO	SN E	LO	LO	LO	LO	LO	LO	LO	LO	SN G	LO	LO	LO	LO	LO	LO	LO			
Richmond	⊕				0558	0610			0628		0640		0658		0710		0728		0740			0758		0808		0828		0838			
Kew Gardens	⊕				0601	0613			0631		0643		0701		0713		0731		0743			0801		0811		0831		0841			
Gunnersbury	⊕				0604	0616			0634		0646		0704		0716		0734		0746			0804		0814		0834		0844			
South Acton					0607	0619			0637		0649		0707		0719		0737		0749			0807		0817		0837		0847			
Acton Central					0610	0623			0640		0653		0710		0723		0740		0752			0810		0820		0840		0850			
Clapham Junction		0508	0538		0547		0609	0615		0630		0639	0645		0700		0715		0730		0739	0745		0800		0815		0830		then	
Imperial Wharf		0512	0542		0551		0613	0619		0634		0644	0649		0704		0719		0734		0744	0749		0804		0819		0834		at	
West Brompton		0515	0545		0554		0616	0622		0637		0647	0652		0707		0722		0737		0747	0752		0807		0822		0837		at	
Kensington (Olympia)		0519	0549		0557		0620	0625		0640		0650	0655		0710		0725		0740		0750	0755		0810		0825		0840			
Shepherd's Bush		0522	0552		0559		0623	0627		0642		0653	0657		0712		0727		0742		0753	0757		0812		0827		0842		the	
Willesden Junction	‡			0557b	0608	0616	0629		0636	0646	0652	0659		0706	0716	0721	0729	0736	0746	0751	0758		0806	0816	0821	0826	0836	0846	0853	0856	
Kensal Rise				0601	0618	0631		0638	0648		0701		0708	0718		0731	0738	0748		0800		0808	0818		0828	0838	0848		0858		same
Brondesbury Park				0603	0620	0633		0640	0650		0703		0710	0720		0733	0740	0750		0802		0810	0820		0830	0840	0850		0900		
Brondesbury				0605	0622	0635		0642	0652		0705		0712	0722		0735	0742	0752		0804		0812	0822		0832	0842	0852		0902		time
West Hampstead				0607	0624	0637		0644	0654		0707		0714	0724		0737	0744	0754		0806		0814	0824		0834	0844	0854		0904		
Finchley Road & Frognal				0608	0625	0638		0645	0655		0708		0715	0725		0738	0745	0755		0807		0815	0825		0835	0845	0855		0905		past
Hampstead Heath				0611	0628	0641		0648	0658		0711		0718	0728		0741	0748	0758		0810		0818	0828		0838	0848	0858		0908		
Gospel Oak				0613	0630	0643		0650	0700		0713		0720	0730		0743	0750	0800		0812		0820	0830		0840	0850	0900		0910		each
Kentish Town West				0615	0632	0645		0652	0702		0715		0722	0732		0745	0752	0802		0814		0822	0832		0842	0852	0902		0912		
Camden Road				0619	0636	0649		0656	0706		0719		0726	0736		0749	0756	0806		0818		0826	0836		0846	0856	0906		0916		hour
Caledonian Road & Barnsbury				0622	0639	0652		0659	0709		0722		0729	0739		0752	0759	0809		0821		0829	0839		0849	0859	0909		0919		
Highbury & Islington				0625	0642	0655		0702	0712		0725		0732	0742		0755	0802	0812		0824		0832	0842		0852	0902	0912		0922		until
Canonbury				0627	0644	0657		0704	0714		0727		0734	0744		0757	0804	0814		0826		0834	0844		0854	0904	0914		0924		
Dalston Kingsland				0629	0646	0659		0706	0716		0729		0736	0746		0759	0806	0816		0828		0836	0846		0856	0906	0916		0926		
Hackney Central				0631	0648	0701		0708	0718		0731		0738	0748		0801	0808	0818		0830		0838	0848		0858	0908	0918		0928		
Homerton				0633	0650	0703		0710	0720		0733		0740	0750		0803	0810	0820		0832		0840	0850		0900	0910	0920		0930		
Hackney Wick				0635	0652	0705		0712	0722		0735		0742	0752		0805	0812	0822		0834		0842	0852		0902	0912	0922		0932		
Stratford				0643	0659	0711		0719	0729		0741		0749	0759		0813	0819	0829		0841		0851	0900		0910	0921	0930		0940		

# Eastbound towards Stratford

# Saturdays

	SN J	LO	LO	LO	LO	LO	LO	LO	LO	SN J	LO	LO	LO	LO	LO	LO	SN A	LO	LO	LO	LO	LO	LO	LO	LO	LO	SN A	LO				
Richmond	⊖			1858		1908		1928		1938				1958		2008			2028			2038		2058		2108		2128		2138		
Kew Gardens	⊖			1901		1911		1931		1941				2001		2011			2031			2041		2101		2111		2131		2141		
Gunnersbury	⊖			1904		1914		1934		1944				2004		2014			2034			2044		2104		2114		2134		2144		
South Acton				1907		1917		1937		1947				2007		2017			2037			2047		2107		2117		2137		2147		
Acton Central				1910		1920		1940		1950				2010		2020			2040			2050		2110		2120		2140		2150		
Clapham Junction		1839	1845		1900		1915		1930		1938	1945		2000		2015		2025	2030		2045		2100		2115		2130		2139	2145		
Imperial Wharf		1844	1849		1904		1919		1934		1942	1949		2004		2019		2029	2034		2049		2104		2119		2134		2144	2149		
West Brompton		1847	1852		1907		1922		1937		1945	1952		2007		2022		2032	2037		2052		2107		2122		2137		2147	2152		
Kensington (Olympia)		1850	1855		1910		1925		1940		1948	1955		2010		2025		2036	2040		2055		2110		2125		2140		2150	2155		
Shepherd's Bush		1853	1857		1912		1927		1942		1950	1957		2012		2027		2039	2042		2057		2112		2127		2142		2153	2157		
Willesden Junction	‡		1906	1916	1921	1926	1936	1946	1951	1956		2006	2016	2021	2026	2036	2046		2051	2056	2106	2116	2121	2126	2136	2146	2151	2156		2206		
Kensal Rise			1908	1918		1928	1938	1948		1958		2008	2018		2028	2038	2048			2058	2108	2118		2128	2138	2148		2158		2208		
Brondesbury Park			1910	1920		1930	1940	1950		2000		2010	2020		2030	2040	2050			2100	2110	2120		2130	2140	2150		2200		2210		
Brondesbury			1912	1922		1932	1942	1952		2002		2012	2022		2032	2042	2052			2102	2112	2122		2132	2142	2152		2202		2212		
West Hampstead			1914	1924		1934	1944	1954		2004		2014	2024		2034	2044	2054			2104	2114	2124		2134	2144	2154		2204		2214		
Finchley Road & Frognal			1915	1925		1935	1945	1955		2005		2015	2025		2035	2045	2055			2105	2115	2125		2135	2145	2155		2205		2215		
Hampstead Heath			1918	1928		1938	1948	1958		2008		2018	2028		2038	2048	2058			2108	2118	2128		2138	2148	2158		2208		2218		
Gospel Oak			1920	1930		1940	1950	2000		2010		2020	2030		2040	2050	2100			2110	2120	2130		2140	2150	2200		2210		2220		
Kentish Town West			1922	1932		1942	1952	2002		2012		2022	2032		2042	2052	2102			2112	2122	2132		2142	2152	2202		2212		2222		
Camden Road			1926	1936		1946	1956	2006		2016		2026	2036		2046	2056	2106			2116	2126	2136		2146	2156	2206		2216		2226		
Caledonian Road & Barnsbury			1929	1939		1949	1959	2009		2019		2029	2039		2049	2059	2109			2119	2129	2139		2149	2159	2209		2219		2229		
Highbury & Islington			1932	1942		1952	2002	2012		2022		2032	2042		2052	2102	2112			2122	2132	2142		2152	2202	2212		2222		2232		
Canonbury			1934	1944		1954	2004	2014		2024		2034	2044		2054	2104	2114			2124	2134	2144		2154	2204	2214		2224		2234		
Dalston Kingsland			1936	1946		1956	2006	2016		2026		2036	2046		2056	2106	2116			2126	2136	2146		2156	2206	2216		2226		2236		
Hackney Central			1938	1948		1958	2008	2018		2028		2038	2048		2058	2108	2118			2128	2138	2148		2158	2208	2218		2228		2238		
Homerton			1940	1950		2000	2010	2020		2030		2040	2050		2100	2110	2120			2130	2140	2150		2200	2210	2220		2230		2240		
Hackney Wick			1942	1952		2002	2012	2022		2032		2042	2052		2102	2112	2122			2132	2142	2152		2202	2212	2222		2232		2242		
Stratford			1951	2000		2010	2021	2030		2040		2051	2100		2109	2119	2129			2139	2149	2159		2209	2219	2229		2239		2249		

# Eastbound towards Stratford

# Saturdays

10

LO LO LO LO LO SN LO LO LO LO LO  
A

Richmond	⊖	2158			2228					2300		2328	
Kew Gardens	⊖	2201			2231					2303		2331	
Gunnersbury	⊖	2204			2234					2306		2334	
South Acton		2207			2237					2309		2337	
Acton Central		2210			2240					2312		2340	
Clapham Junction			2200	2215		2230	2239	2245		2300		2330	
Imperial Wharf			2204	2219		2234	2244	2251		2304		2334	
West Brompton			2207	2222		2237	2247	2254		2307		2337	
Kensington (Olympia)			2210	2225		2240	2250	2259		2310		2340	
Shepherd's Bush			2212	2227		2242	2253	2301		2312		2342	
Willesden Junction	‡	2216	2221	2236	2246	2251		2309	2318	2321	2345	2351	
Kensal Rise		2218			2248					2320			
Brondesbury Park		2220			2250					2322			
Brondesbury		2222			2252					2324			
West Hampstead		2224			2254					2326			
Finchley Road & Frognal		2225			2255					2327			
Hampstead Heath		2228			2258					2330			
Gospel Oak		2230			2300					2332			
Kentish Town West		2232			2302					2334			
Camden Road		2236			2306					2338			
Caledonian Road & Barnsbury		2239			2309					2341			
Highbury & Islington		2242			2312					2344			
Canonbury		2244			2314					2346			
Dalston Kingsland		2246			2316					2348			
Hackney Central		2248			2318					2350			
Homerton		2250			2320					2352			
Hackney Wick		2252			2322					2354			
Stratford		2259			2329					0001			

Key to symbols and notes - see page 25

# Eastbound towards Stratford

# Sundays 11

	SN	SN	LO	LO	LO	LO	LO	LO	SN	LO	LO	LO	LO	LO	SN	LO	LO	LO	LO	LO	LO	LO	LO	LO	LO	LO	LO			
		A							A						A								A							
Richmond	⊖				0859		0917	0929			0947	0959		1010			1029		1040		1059		1110			1129		1140		
Kew Gardens	⊖				0902		0920	0932			0950	1002		1013			1032		1043		1102		1113			1132		1143		
Gunnersbury	⊖				0905		0923	0935			0953	1005		1016			1035		1046		1105		1116			1135		1146		
South Acton					0908		0926	0938			0956	1008		1019			1038		1049		1108		1119			1138		1149		
Acton Central					0911		0929	0941			0959	1011		1022			1041		1052		1111		1122			1141		1152		
Clapham Junction		0724	0815	0830		0900			0915	0930			1000		1015	1020		1030		1045		1100		1115	1120		1130		1145	
Imperial Wharf		0728	0819	0834		0904			0919	0934			1004		1019	1024		1034		1049		1104		1119	1124		1134		1149	
West Brompton		0731	0822	0837		0907			0922	0937			1007		1022	1027		1037		1052		1107		1122	1127		1137		1152	
Kensington (Olympia)		0734	0826	0840		0910			0926	0940			1010		1026	1030		1040		1055		1110		1126	1130		1140		1155	
Shepherd's Bush		0736	0829	0842		0912			0929	0942			1012		1029	1032		1042		1057		1112		1129	1132		1142		1157	
Willesden Junction	‡			0852	0900b	0917	0921	0935	0947		0951	1005	1017	1021	1028		1041	1047	1051	1058	1106	1117	1121	1128		1141	1147	1152	1158	1206
Kensal Rise				0904	0919		0937	0949				1007	1019		1030		1043	1049		1100	1108	1119		1130		1143	1149		1200	1208
Brondesbury Park				0906	0921		0939	0951				1009	1021		1032		1045	1051		1102	1110	1121		1132		1145	1151		1202	1210
Brondesbury				0908	0923		0941	0953				1011	1023		1034		1047	1053		1104	1112	1123		1134		1147	1153		1204	1212
West Hampstead				0910	0925		0943	0955				1013	1025		1036		1049	1055		1106	1114	1125		1136		1149	1155		1206	1214
Finchley Road & Frognal				0911	0926		0944	0956				1014	1026		1037		1050	1056		1107	1115	1126		1137		1150	1156		1207	1215
Hampstead Heath				0914	0930		0947	0959				1017	1029		1040		1053	1059		1110	1118	1129		1140		1153	1159		1210	1218
Gospel Oak				0916	0932		0949	1001				1019	1031		1042		1055	1101		1112	1120	1131		1142		1155	1201		1212	1220
Kentish Town West				0918	0934		0951	1003				1021	1033		1044		1057	1103		1114	1122	1133		1144		1157	1203		1214	1222
Camden Road				0922	0937		0955	1007				1025	1037		1048		1101	1107		1118	1126	1137		1148		1201	1207		1218	1226
Caledonian Road & Barnsbury				0925	0940		0958	1010				1028	1040		1051		1104	1110		1121	1129	1140		1151		1204	1210		1221	1229
Highbury & Islington				0928	0943		1001	1013				1031	1043		1054		1107	1113		1124	1132	1143		1154		1207	1213		1224	1232
Canonbury				0930	0945		1003	1015				1033	1045		1056		1109	1115		1126	1134	1145		1156		1209	1215		1226	1234
Dalston Kingsland				0932	0947		1005	1017				1035	1047		1058		1111	1117		1128	1136	1147		1158		1211	1217		1228	1236
Hackney Central				0934	0949		1007	1019				1037	1049		1100		1113	1119		1130	1138	1149		1200		1213	1219		1230	1238
Homerton				0936	0951		1009	1021				1039	1051		1102		1115	1121		1132	1140	1151		1202		1215	1221		1232	1240
Hackney Wick				0938	0953		1011	1023				1041	1053		1104		1117	1123		1134	1142	1153		1204		1217	1223		1234	1242
Stratford				0946	1000		1018	1030				1048	1100		1111		1124	1130		1141	1149	1200		1211		1224	1230		1241	1249



# Eastbound towards Stratford

# Sundays

12

	LO	LO	LO	SN A	LO	LO	LO	LO	LO	LO	LO	LO	SN A	LO	LO	LO	LO	LO	LO	LO	SN A	LO	LO	LO	LO	LO	LO			
Richmond	⊕ 1159		1210			1229		1240		1259				2010			2029		2040		2059		2117			2129		2147		2159
Kew Gardens	⊕ 1202		1213			1232		1243		1302				2013			2032		2043		2102		2120			2132		2150		2202
Gunnersbury	⊕ 1205		1216			1235		1246		1305				2016			2035		2046		2105		2123			2135		2153		2205
South Acton		1208		1219			1238		1249		1308			2019			2038		2049		2108		2126			2138		2156		2208
Acton Central		1211		1222			1241		1252		1311			2022			2041		2052		2111		2129			2141		2159		2211
Clapham Junction		1200		1205	1215		1230		1245		then	2000		2005	2015		2030		2045		2100		2115	2120		2130		2145		
Imperial Wharf		1204		1209	1219		1234		1249			2004		2009	2019		2034		2049		2104		2119	2124		2134		2149		
West Brompton		1207		1212	1222		1237		1252		at	2007		2012	2022		2037		2052		2107		2122	2127		2137		2152		
Kensington (Olympia)		1210		1216	1225		1240		1255			2010		2016	2025		2040		2055		2110		2126	2130		2140		2155		
Shepherd's Bush		1212		1219	1227		1242		1257		the	2012		2019	2027		2042		2057		2112		2129	2132		2142		2157		
Willesden Junction	‡ 1217	1222	1228		1236	1247	1251	1258	1306	1317		2021	2028		2036	2047	2051	2058	2108	2117	2121	2135		2141	2147	2151	2205	2208	2217	
Kensal Rise		1219		1230		1238	1249		1300	1308	1319	same		2030			2049		2100		2119		2137			2149		2207		2219
Brondesbury Park		1221		1232		1240	1251		1302	1310	1321			2032			2051		2102		2121		2139			2151		2209		2221
Brondesbury		1223		1234		1242	1253		1304	1312	1323	time		2034			2053		2104		2123		2141			2153		2211		2223
West Hampstead		1225		1236		1244	1255		1306	1314	1325			2036			2055		2106		2125		2143			2155		2213		2225
Finchley Road & Frognal		1226		1237		1245	1256		1307	1315	1326	past		2037			2056		2107		2126		2144			2156		2214		2226
Hampstead Heath		1229		1240		1248	1259		1310	1318	1329			2040			2059		2110		2129		2147			2159		2217		2229
Gospel Oak		1231		1242		1250	1301		1312	1320	1331	each		2042			2101		2112		2131		2149			2201		2222		2236
Kentish Town West		1233		1244		1252	1303		1314	1322	1333			2044			2103		2114		2133		2151			2203				
Camden Road		1237		1248		1256	1307		1318	1326	1337	hour		2048			2107		2118		2137		2155			2207				
Caledonian Road & Barnsbury		1240		1251		1259	1310		1321	1329	1340			2051			2110		2121		2140		2158			2210				
Highbury & Islington		1243		1254		1302	1313		1324	1332	1343	until		2054			2113		2124		2143		2201			2213				
Canonbury		1245		1256		1304	1315		1326	1334	1345			2056			2115		2126		2145		2203			2215				
Dalston Kingsland		1247		1258		1306	1317		1328	1336	1347			2058			2117		2128		2147		2205			2217				
Hackney Central		1249		1300		1308	1319		1330	1338	1349			2100			2119		2130		2149		2207			2219				
Homerton		1251		1302		1310	1321		1332	1340	1351			2102			2121		2132		2151		2209			2221				
Hackney Wick		1253		1304		1312	1323		1334	1342	1353			2104			2123		2134		2153		2211			2223				
Stratford		1300		1311		1319	1330		1341	1349	1400			2111			2130		2141		2200		2218			2230				

Key to symbols and notes - see page 25

	LO	SN	LO	LO	LO	LO	LO
	A						
Richmond	⊖			2228		2258	
Kew Gardens	⊖			2231		2302	
Gunnersbury	⊖			2234		2305	
South Acton				2237		2308	
Acton Central				2240		2311	
Clapham Junction	2200	2215	2220		2244		2315
Imperial Wharf	2204	2219	2224		2248		2319
West Brompton	2207	2222	2227		2251		2322
Kensington (Olympia)	2210	2226	2230		2254		2325
Shepherd's Bush	2212	2229	2232		2256		2327
Willesden Junction	‡	2223		2241	2246	2308	2317
Kensal Rise				2248		2319	
Brondesbury Park				2250		2321	
Brondesbury				2252		2323	
West Hampstead				2254		2325	
Finchley Road & Frognal				2255		2326	
Hampstead Heath				2258		2329	
Gospel Oak				2303		2335	
Kentish Town West							
Camden Road							
Caledonian Road & Barnsbury							
Highbury & Islington							
Canonbury							
Dalston Kingsland							
Hackney Central							
Homerton							
Hackney Wick							
Stratford							

# Westbound towards Richmond / Clapham Junction

# Mondays to Fridays

	LO	SN K	LO	LO	LO	LO	LO	LO	LO	SN K	LO	LO	LO	LO	LO	LO	SN L	LO	LO	LO	LO	SN	LO	LO	LO	LO	SN	LO	LO	
Stratford				0547				0605	0612	0620		0627	0635	0642	0650	0655	0700		0712	0720	0727	0735		0742	0750	0757	0803		0812	0820
Hackney Wick				0550				0608	0615	0623		0630	0638	0645	0654	0658	0703		0715	0723	0730	0738		0745	0753	0800	0806		0815	0823
Homerton				0553				0611	0618	0626		0633	0641	0648	0656	0701	0706		0718	0726	0733	0742		0748	0756	0803	0809		0818	0826
Hackney Central				0555				0613	0620	0628		0635	0643	0650	0658	0703	0708		0720	0728	0735	0743		0750	0758	0805	0811		0820	0828
Dalston Kingsland				0557				0615	0622	0630		0637	0645	0652	0700	0705	0710		0722	0730	0737	0745		0752	0800	0807	0813		0822	0830
Canonbury				0559				0617	0624	0632		0639	0647	0654	0702	0707	0712		0724	0732	0739	0747		0754	0802	0809	0815		0824	0832
Highbury & Islington				0602				0619	0627	0635		0641	0650	0657	0705	0710	0715		0727	0735	0742	0750		0757	0805	0812	0818		0827	0835
Caledonian Road & Barnsbury				0604				0621	0629	0637		0643	0652	0659	0707	0712	0717		0729	0737	0744	0752		0759	0807	0814	0820		0829	0837
Camden Road				0607				0624	0632	0640		0646	0655	0702	0710	0715	0720		0732	0740	0747	0755		0802	0810	0817	0823		0832	0840
Kentish Town West				0609				0627	0634	0642		0649	0657	0704	0713	0717	0722		0734	0742	0749	0757		0804	0812	0819	0825		0834	0842
Gospel Oak				0612				0630	0637	0645		0651	0700	0707	0715	0720	0725		0737	0745	0752	0800		0807	0815	0822	0828		0837	0845
Hampstead Heath				0614				0632	0639	0647		0653	0702	0709	0717	0722	0727		0739	0747	0754	0802		0809	0817	0824	0830		0839	0847
Finchley Road & Frognal				0616				0634	0641	0649		0655	0704	0711	0719	0724	0729		0741	0749	0756	0804		0811	0819	0826	0832		0841	0849
West Hampstead				0618				0636	0643	0651		0657	0706	0713	0721	0726	0731		0743	0751	0758	0806		0813	0821	0828	0834		0843	0851
Brondesbury				0620				0638	0645	0653		0658	0708	0715	0722	0728	0733		0745	0753	0800	0808		0815	0823	0830	0836		0845	0853
Brondesbury Park				0621				0639	0646	0654		0700	0709	0716	0724	0729	0734		0746	0754	0801	0809		0816	0824	0831	0837		0846	0854
Kensal Rise				0623				0641	0648	0656		0702	0711	0718	0726	0731	0736		0748	0756	0803	0811		0818	0826	0833	0839		0848	0856
Willesden Junction	‡	0601		0609	0628	0633	0641	0646	0653	0701		0707	0716	0723	0731	0736	0741		0753	0801	0808	0816		0823	0831	0838	0846		0853	0901
Shepherd's Bush		0608	0619			0640		0654		0709	0719		0724		0739		0749	0804		0809		0824	0831		0839		0854	0906		0909
Kensington (Olympia)		0610	0622			0642		0656		0711	0722		0726		0741		0751	0807		0811		0826	0833		0841		0856	0909		0911
West Brompton		0613	0625			0645		0658		0713	0725		0728		0743		0753	0810		0813		0828	0836		0843		0858	0912		0913
Imperial Wharf		0616	0627			0648		0701		0716	0727		0731		0746		0756	0813		0816		0831	0838		0846		0901	0915		0916
Clapham Junction		0623	0632			0654		0709		0724	0732		0739		0754		0804	0817		0824		0839	0843		0854		0909	0919		0925
Acton Central			0614	0633		0646		0658			0713		0728		0741			0758		0813			0828		0843			0858		
South Acton			0616	0636		0649		0701			0716		0731		0744			0801		0816			0831		0846			0901		
Gunnersbury	⊖		0620	0639		0653		0704			0719		0734		0748			0804		0819			0834		0851			0904		
Kew Gardens	⊖		0623	0642		0656		0707			0722		0737		0751			0807		0822			0837		0854			0907		
Richmond	⊖		0631	0649		0704		0714			0730		0744		0757			0814		0828			0843		0858			0913		

# Westbound towards Richmond / Clapham Junction

# Mondays to Fridays

15

	SN M	LO	LO	SN	LO	LO	LO	LO	SN N	LO	LO	SN M	LO	LO	LO	LO	LO	LO	LO	SN M	LO	LO	LO	LO	LO	LO	LO			
Stratford		0827	0835		0842	0850	0857	0903		0915			0925	0935	0945		0955	1005	1015		1025	1035	1045		1055	1105	1115			
Hackney Wick		0830	0838		0845	0853	0900	0906		0918			0928	0938	0948		0958	1008	1018		1028	1038	1048		1058	1108	1118			
Homerton		0833	0841		0848	0856	0903	0909		0921			0931	0941	0951		1001	1011	1021		1031	1041	1051		1101	1111	1121			
Hackney Central		0835	0843		0850	0858	0905	0911		0923			0933	0943	0953		1003	1013	1023		1033	1043	1053		1103	1113	1123			
Dalston Kingsland		0837	0845		0852	0900	0907	0913		0925			0935	0945	0955		1005	1015	1025		1035	1045	1055		1105	1115	1125			
Canonbury		0839	0847		0854	0902	0909	0915		0927			0937	0947	0957		1007	1017	1027		1037	1047	1057		1107	1117	1127			
Highbury & Islington		0842	0850		0857	0905	0912	0918		0930			0940	0950	1000		1010	1020	1030		1040	1050	1100		1110	1120	1130			
Caledonian Road & Barnsbury		0844	0852		0859	0907	0914	0920		0932			0942	0952	1002		1012	1022	1032		1042	1052	1102		1112	1122	1132			
Camden Road		0847	0855		0902	0910	0917	0923		0935			0945	0955	1005		1015	1025	1035		1045	1055	1105		1115	1125	1135			
Kentish Town West		0849	0859		0904	0912	0919	0925		0937			0947	0957	1007		1017	1027	1037		1047	1057	1107		1117	1127	1137			
Gospel Oak		0852	0902		0908	0915	0922	0927		0940			0950	1000	1010		1020	1030	1040		1050	1100	1110		1120	1130	1140			
Hampstead Heath		0854	0904		0910	0917	0924	0929		0942			0952	1002	1012		1022	1032	1042		1052	1102	1112		1122	1132	1142			
Finchley Road & Frognal		0856	0906		0912	0919	0926	0931		0944			0954	1004	1014		1024	1034	1044		1054	1104	1114		1124	1134	1144			
West Hampstead		0858	0908		0914	0921	0928	0933		0946			0956	1006	1016		1026	1036	1046		1056	1106	1116		1126	1136	1146			
Brondesbury		0900	0910		0915	0923	0930	0935		0948			0958	1008	1018		1028	1038	1048		1058	1108	1118		1128	1138	1148			
Brondesbury Park		0901	0911		0917	0924	0931	0936		0949			0959	1009	1019		1029	1039	1049		1059	1109	1119		1129	1139	1149			
Kensal Rise		0903	0913		0919	0926	0933	0938		0951			1001	1011	1021		1031	1041	1051		1101	1111	1121		1131	1141	1151			
Willesden Junction	‡	0908	0917		0924	0931	0938	0944		0956	1001		1006	1016	1026	1031	1036	1046	1056	1101		1106	1116	1126	1131	1136	1145	1156	1201	
Shepherd's Bush	0918		0925	0933		0939		0954			1009	1021		1026		1039		1054		1109	1119		1124		1139		1154		1209	
Kensington (Olympia)	0921		0927	0935		0941		0956	1002		1011	1024		1028		1041		1056		1111	1121		1126		1141		1156		1211	
West Brompton	0923		0929	0937		0943		0958	1004		1013	1027		1030		1043		1058		1113	1123		1128		1143		1158		1213	
Imperial Wharf	0926		0932	0940		0946		1001	1007		1016	1029		1033		1046		1101		1116	1126		1131		1146		1201		1216	
Clapham Junction	0931		0939	0945		0954		1008			1023	1034		1040		1053		1109		1123	1130		1139		1153		1209		1223	
Acton Central		0913			0929		0943			1001			1011		1031		1041		1101		1111		1131		1141		1201			
South Acton		0916			0931		0946			1004			1014		1034		1044		1104		1114		1134		1144		1204			
Gunnersbury	⊖		0919		0937		0949			1008			1019		1038		1048		1108		1118		1138		1148		1208			
Kew Gardens	⊖		0922		0940		0952			1011			1022		1041		1051		1111		1121		1141		1151		1211			
Richmond	⊖		0928			0945		0958			1016			1029		1046		1056		1116		1126		1146		1156		1216		

# Westbound towards Richmond / Clapham Junction

# Mondays to Fridays

	SN M	LO	LO	LO	LO	LO	LO	LO	LO	SN M	LO	LO	LO	LO	LO	LO	LO	LO	SN M	LO	LO	LO	LO	LO	LO	LO	SN M	LO
Stratford		1125	1137	1145		1155	1205	1215			1225	1235	1245		1255	1305	1315			1325	1335	1345		1355	1405	1415		1425
Hackney Wick		1128	1140	1148		1158	1208	1218			1228	1238	1248		1258	1308	1318			1328	1338	1348		1358	1408	1418		1428
Homerton		1131	1143	1151		1201	1211	1221			1231	1241	1251		1301	1311	1321			1331	1341	1351		1401	1411	1421		1431
Hackney Central		1133	1145	1153		1203	1213	1223			1233	1243	1253		1303	1313	1323			1333	1343	1353		1403	1413	1423		1433
Dalston Kingsland		1135	1147	1155		1205	1215	1225			1235	1245	1255		1305	1315	1325			1335	1345	1355		1405	1415	1425		1435
Canonbury		1137	1149	1157		1207	1217	1227			1237	1247	1257		1307	1317	1327			1337	1347	1357		1407	1417	1427		1437
Highbury & Islington		1140	1152	1200		1210	1220	1230			1240	1250	1300		1310	1320	1330			1340	1350	1400		1410	1420	1430		1440
Caledonian Road & Barnsbury		1142	1154	1202		1212	1222	1232			1242	1252	1302		1312	1322	1332			1342	1352	1402		1412	1422	1432		1442
Camden Road		1145	1157	1205		1215	1225	1235			1245	1255	1305		1315	1325	1335			1345	1355	1405		1415	1425	1435		1445
Kentish Town West		1147	1159	1207		1217	1227	1237			1247	1257	1307		1317	1327	1337			1347	1357	1407		1417	1427	1437		1447
Gospel Oak		1151	1202	1210		1220	1230	1240			1250	1300	1310		1320	1330	1341			1350	1400	1410		1420	1430	1440		1450
Hampstead Heath		1153	1204	1212		1222	1232	1242			1252	1302	1312		1322	1332	1343			1352	1402	1412		1422	1432	1442		1452
Finchley Road & Frognal		1155	1206	1214		1224	1234	1244			1254	1304	1314		1324	1334	1345			1354	1404	1414		1424	1434	1444		1454
West Hampstead		1157	1208	1216		1226	1236	1246			1256	1306	1316		1326	1336	1347			1356	1406	1416		1426	1436	1446		1456
Brondesbury		1159	1210	1218		1228	1238	1248			1258	1308	1318		1328	1338	1349			1358	1408	1418		1428	1438	1448		1458
Brondesbury Park		1200	1211	1219		1229	1239	1249			1259	1309	1319		1329	1339	1350			1359	1409	1419		1429	1439	1449		1459
Kensal Rise		1202	1213	1221		1231	1241	1251			1301	1311	1321		1331	1341	1352			1401	1411	1421		1431	1441	1451		1501
Willesden Junction ‡		1207	1217	1226	1231	1236	1246	1256	1301		1306	1316	1326	1331	1336	1346	1357	1401		1406	1416	1426	1431	1436	1446	1456	1501	1506
Shepherd's Bush	1219		1225		1239		1254		1309	1319		1324		1339		1354		1409	1419		1424		1439		1454		1509	1522
Kensington (Olympia)	1222		1227		1241		1256		1311	1322		1326		1341		1356		1411	1422		1426		1441		1456		1511	1524
West Brompton	1225		1229		1243		1258		1313	1325		1328		1343		1358		1413	1425		1428		1443		1458		1513	1526
Imperial Wharf	1227		1232		1246		1301		1316	1328		1331		1346		1401		1416	1428		1431		1446		1501		1516	1529
Clapham Junction	1232		1240		1253		1309		1323	1332		1339		1353		1409		1423	1432		1439		1453		1509		1523	1533
Acton Central		1212		1231		1241		1301			1311		1331		1341		1402			1411		1431		1441		1501		1511
South Acton		1215		1234		1244		1304			1314		1334		1344		1405			1414		1434		1444		1504		1514
Gunnersbury	⊖	1219		1238		1248		1308			1318		1338		1348		1409			1418		1438		1448		1508		1518
Kew Gardens	⊖	1222		1241		1251		1311			1321		1341		1351		1412			1421		1441		1451		1511		1521
Richmond	⊖	1227		1246		1256		1316			1326		1346		1356		1417			1426		1446		1456		1516		1526



# Westbound towards Richmond / Clapham Junction

# Mondays to Fridays

	LO	LO	LO	LO	LO	LO	LO	SN	LO	LO	SN	LO	LO	LO	LO	SN	LO	LO	SN	LO	LO	LO	LO	SN	LO	LO	LO	LO	SN	LO	LO	LO	LO	SN
								M											L					P										L
Stratford	1435	1445		1455	1505	1515			1525	1535		1542	1550	1559			1612	1620		1627	1635	1642	1650		1657	1705	1712	1721						
Hackney Wick	1438	1448		1458	1508	1518			1528	1538		1545	1553	1602			1615	1623		1630	1638	1645	1653		1700	1708	1715	1723						
Homerton	1441	1451		1501	1511	1521			1531	1541		1548	1556	1605			1618	1626		1633	1640	1648	1656		1703	1711	1718	1726						
Hackney Central	1443	1453		1503	1513	1523			1533	1543		1550	1558	1607			1620	1628		1635	1642	1650	1658		1705	1713	1720	1728						
Dalston Kingsland	1445	1455		1505	1515	1525			1535	1545		1552	1600	1609			1622	1630		1637	1644	1652	1700		1707	1715	1722	1730						
Canonbury	1447	1457		1507	1517	1527			1537	1547		1554	1602	1611			1624	1632		1639	1646	1654	1702		1709	1717	1724	1732						
Highbury & Islington	1450	1500		1510	1520	1530			1540	1550		1557	1605	1614			1627	1635		1642	1649	1657	1705		1712	1720	1727	1735						
Caledonian Road & Barnsbury	1452	1502		1512	1522	1532			1542	1552		1559	1607	1616			1629	1637		1644	1651	1659	1707		1714	1722	1729	1737						
Camden Road	1455	1505		1515	1525	1535			1545	1555		1603	1610	1619			1632	1640		1647	1654	1702	1710		1717	1725	1732	1740						
Kentish Town West	1457	1507		1517	1527	1537			1548	1557		1606	1612	1621			1634	1642		1649	1658	1704	1713		1719	1727	1734	1742						
Gospel Oak	1500	1510		1520	1530	1540			1550	1602		1608	1615	1624			1637	1645		1652	1703	1708	1717		1723	1730	1737	1745						
Hampstead Heath	1502	1512		1522	1532	1542			1552	1604		1610	1617	1626			1639	1647		1654	1705	1710	1719		1725	1732	1739	1747						
Finchley Road & Frognal	1504	1514		1524	1534	1544			1554	1606		1612	1619	1628			1641	1649		1656	1707	1712	1721		1727	1734	1741	1749						
West Hampstead	1506	1516		1526	1536	1546			1556	1608		1614	1621	1630			1643	1651		1658	1709	1714	1723		1729	1736	1743	1751						
Brondesbury	1508	1518		1528	1538	1548			1558	1610		1615	1623	1632			1645	1653		1700	1710	1716	1725		1730	1738	1745	1753						
Brondesbury Park	1509	1519		1529	1539	1549			1559	1611		1617	1624	1633			1646	1654		1701	1712	1717	1726		1732	1739	1746	1754						
Kensal Rise	1511	1521		1531	1541	1551			1601	1613		1619	1626	1635			1648	1656		1703	1714	1719	1728		1734	1741	1748	1756						
Willesden Junction	‡	1516	1526	1531	1536	1546	1556	1601		1606	1617		1624	1631	1640	1646		1653	1701		1708	1719	1724	1732		1739	1746	1753	1801					
Shepherd's Bush		1526		1539		1554		1609	1619			1625		1639		1653			1709	1719		1726		1740	1745		1754		1809	1819				
Kensington (Olympia)		1528		1541		1556		1611	1622			1627	1634		1641		1655	1704		1711	1722		1728		1742	1747		1756		1811	1822			
West Brompton		1530		1543		1558		1613	1625			1629	1636		1643		1658	1706		1713	1725		1731		1744	1750		1758		1813	1825			
Imperial Wharf		1533		1546		1601		1616	1627			1632	1639		1646		1701	1709		1716	1728		1734		1747	1753		1801		1816	1827			
Clapham Junction		1540		1553		1609		1623	1632			1639	1643		1654		1707	1713		1724	1732		1739		1754	1757		1809		1825	1832			
Acton Central			1531		1541		1601			1611			1629		1645			1658			1713		1729			1744		1758						
South Acton			1534		1544		1604			1614			1631		1648			1701			1716		1734			1746		1800						
Gunnersbury	⊖		1538		1548		1608			1618			1634		1651			1704			1719		1739			1749		1803						
Kew Gardens	⊖		1541		1551		1611			1621			1637		1654			1707			1722		1742			1752		1806						
Richmond	⊖		1546		1556		1616			1627			1643		1700			1713			1728		1746			1758		1813						

# Westbound towards Richmond / Clapham Junction

# Mondays to Fridays

	LO	LO	LO	LO	LO	LO	LO	LO	SN Q	LO	LO	LO	LO	LO	LO	LO	LO	SN R	LO	LO	LO	LO	LO	LO	LO	LO	SN R	LO	LO
Stratford	1727	1736	1742	1751	1757	1805	1812	1820		1827	1835	1842	1848	1857	1905	1915			1925	1937	1945		1955	2005	2015			2025	2033
Hackney Wick	1730	1738	1745	1754	1800	1808	1815	1823		1830	1838	1845	1851	1900	1908	1918			1928	1940	1948		1958	2008	2018			2028	2037
Homerton	1733	1741	1748	1757	1803	1811	1818	1826		1833	1841	1848	1854	1903	1911	1921			1931	1943	1951		2001	2011	2021			2031	2039
Hackney Central	1735	1743	1750	1759	1805	1813	1820	1828		1835	1843	1850	1856	1905	1913	1923			1933	1945	1953		2003	2013	2023			2033	2041
Dalston Kingsland	1737	1745	1752	1801	1807	1815	1822	1831		1837	1845	1852	1858	1907	1915	1925			1935	1947	1955		2005	2015	2025			2035	2043
Canonbury	1739	1747	1754	1803	1809	1817	1824	1832		1839	1847	1854	1900	1909	1917	1927			1937	1949	1957		2007	2017	2027			2037	2045
Highbury & Islington	1742	1750	1757	1806	1812	1820	1827	1835		1842	1850	1857	1903	1912	1920	1930			1940	1952	2000		2010	2020	2030			2040	2048
Caledonian Road & Barnsbury	1744	1752	1759	1808	1814	1822	1829	1837		1844	1852	1859	1905	1914	1922	1932			1942	1954	2002		2012	2022	2032			2042	2050
Camden Road	1747	1755	1802	1812	1817	1825	1832	1840		1847	1855	1902	1908	1917	1925	1935			1945	1957	2005		2015	2025	2035			2045	2053
Kentish Town West	1749	1758	1805	1815	1819	1827	1834	1842		1849	1857	1905	1910	1919	1927	1937			1947	1959	2007		2018	2027	2037			2047	2056
Gospel Oak	1752	1802	1808	1818	1822	1830	1837	1845		1852	1900	1909	1913	1924	1930	1940			1950	2001	2010		2022	2030	2040			2050	2059
Hampstead Heath	1754	1804	1810	1820	1824	1832	1839	1847		1854	1902	1911	1915	1926	1932	1942			1952	2003	2012		2024	2032	2042			2052	2101
Finchley Road & Frognal	1756	1806	1812	1822	1826	1834	1841	1849		1856	1904	1913	1917	1928	1934	1944			1954	2005	2014		2026	2034	2044			2054	2103
West Hampstead	1758	1808	1814	1824	1828	1836	1843	1851		1858	1906	1915	1919	1930	1936	1946			1956	2007	2016		2028	2036	2046			2056	2105
Brondesbury	1800	1809	1816	1826	1830	1838	1845	1853		1900	1908	1916	1921	1932	1938	1948			1958	2009	2018		2029	2038	2048			2057	2107
Brondesbury Park	1801	1811	1817	1827	1831	1839	1846	1854		1901	1909	1918	1922	1933	1939	1949			1959	2010	2019		2031	2039	2049			2059	2108
Kensal Rise	1803	1813	1819	1829	1833	1841	1848	1856		1903	1911	1920	1924	1935	1941	1951			2001	2012	2021		2033	2041	2051			2101	2110
Willesden Junction	‡ 1808	1818	1824	1833	1838	1846	1853	1901		1908	1916	1925	1931	1940	1946	1956	2001		2006	2017	2026	2031	2037	2046	2057	2101		2106	2115
Shepherd's Bush		1825		1841		1854		1909	1918		1923		1939		1954		2009	2021		2026		2039		2054		2109	2122		2126
Kensington (Olympia)		1827		1843		1856		1911	1920		1925		1941		1956		2011	2023		2028		2041		2056		2111	2124		2128
West Brompton		1830		1845		1858		1913	1923		1928		1943		1958		2013	2025		2030		2043		2058		2113	2127		2131
Imperial Wharf		1833		1848		1901		1916	1925		1931		1946		2001		2016	2028		2033		2046		2101		2116	2129		2134
Clapham Junction		1840		1855		1909		1924	1930		1939		1954		2009		2023	2033		2041		2053		2109		2123	2134		2141
Acton Central	1813		1829		1843		1858			1913		1930		1945		2001			2011		2031		2042		2102			2111	
South Acton	1816		1832		1846		1901			1916		1932		1948		2004			2014		2034		2044		2105			2113	
Gunnersbury	⊖ 1819		1838		1849		1906			1919		1938		1951		2009			2018		2038		2049		2108			2118	
Kew Gardens	⊖ 1822		1841		1852		1909			1922		1941		1954		2012			2021		2041		2052		2111			2121	
Richmond	⊖ 1828		1845		1858		1914			1929		1946		1959		2017			2026		2046		2056		2116			2126	

# Westbound towards Richmond / Clapham Junction

# Mondays to Fridays

	LO	LO	LO	LO	LO	LO	SN R	LO	LO	LO	LO	SN K	LO	LO	LO	SN L	LO	LO	LO	SN K	LO	LO	LO
Stratford	2045		2055	2105	2115			2125	2135	2145			2155	2215			2225	2245			2255	2315	2345
Hackney Wick	2048		2058	2108	2118			2128	2138	2148			2158	2218			2228	2248			2258	2318	2348
Homerton	2051		2101	2111	2121			2131	2141	2151			2201	2221			2231	2251			2301	2321	2351
Hackney Central	2053		2103	2113	2123			2133	2143	2153			2203	2223			2233	2253			2303	2323	2353
Dalston Kingsland	2055		2105	2115	2125			2135	2145	2155			2205	2225			2235	2255			2305	2325	2355
Canonbury	2057		2107	2117	2127			2137	2147	2157			2207	2227			2237	2257			2307	2327	2357
Highbury & Islington	2100		2110	2120	2130			2140	2150	2200			2210	2230			2240	2300			2310	2330	2359
Caledonian Road & Barnsbury	2102		2112	2122	2132			2142	2152	2202			2212	2232			2242	2302			2312	2332	0002
Camden Road	2105		2115	2125	2135			2145	2155	2205			2215	2235			2246	2305			2316	2335	0005
Kentish Town West	2107		2117	2127	2137			2147	2157	2207			2217	2237				2307				2337	0007
Gospel Oak	2110		2120	2130	2140			2150	2200	2210			2220	2240				2310				2340	0010
Hampstead Heath	2112		2122	2132	2142			2152	2202	2212			2222	2242				2312				2342	0012
Finchley Road & Frognal	2114		2124	2134	2144			2154	2204	2214			2224	2244				2314				2344	0014
West Hampstead	2116		2126	2136	2146			2156	2206	2216			2226	2246				2316				2346	0016
Brondesbury	2118		2128	2138	2148			2158	2208	2218			2228	2248				2318				2348	0018
Brondesbury Park	2119		2129	2139	2149			2159	2209	2219			2229	2249				2319				2349	0019
Kensal Rise	2121		2131	2141	2151			2201	2211	2221			2231	2251				2321				2351	0021
Willesden Junction	‡ 2126	2131	2136	2146	2156	2201		2206	2216	2226	2231		2236	2256	2301			2326	2340			0002c	0029c
Shepherd's Bush		2139		2154		2209	2223		2226		2239	2249			2309	2321			2348	2354			
Kensington (Olympia)		2141		2156		2211	2225		2228		2241	2251			2311	2323			2350	2356			
West Brompton		2143		2158		2213	2227		2230		2243	2254			2313	2326			2352	2359			
Imperial Wharf		2146		2201		2216	2230		2233		2246	2256			2316	2328			2355	0002			
Clapham Junction		2153		2209		2223	2234		2240		2253	2301			2323	2333			0002	0007			
Acton Central	2131		2141		2201			2211		2231			2241	2301				2331					
South Acton	2134		2144		2204			2214		2234			2244	2304				2334					
Gunnersbury	⊖ 2138		2148		2208			2218		2238			2248	2308				2338					
Kew Gardens	⊖ 2141		2151		2211			2221		2241			2251	2311				2341					
Richmond	⊖ 2146		2156		2216			2226		2246			2256	2316				2346					

# Westbound towards Richmond / Clapham Junction

# Saturdays

20

	LO	SN S	LO	LO	LO	LO	LO	LO	LO	SN S	LO	LO	LO	LO	LO	LO	LO	SN M	LO	LO	LO	LO	LO	LO	LO	LO	SN L			
Stratford				0542		0555	0605	0615			0625	0635	0645		0655	0705	0715				1725	1735	1745		1755	1805	1815			
Hackney Wick				0545		0558	0608	0618			0628	0638	0648		0658	0708	0718				1728	1738	1748		1758	1808	1818			
Homerton				0548		0601	0611	0621			0631	0641	0651		0701	0711	0721				1731	1741	1751		1801	1811	1821			
Hackney Central				0550		0603	0613	0623			0633	0643	0653		0703	0713	0723				1733	1743	1753		1803	1813	1823			
Dalston Kingsland				0552		0605	0615	0625			0635	0645	0655		0705	0715	0725				1735	1745	1755		1805	1815	1825			
Canonbury				0554		0607	0617	0627			0637	0647	0657		0707	0717	0727		then		1737	1747	1757		1807	1817	1827			
Highbury & Islington				0557		0610	0620	0630			0640	0650	0700		0710	0720	0730				1740	1750	1800		1810	1820	1830			
Caledonian Road & Barnsbury				0559		0612	0622	0632			0642	0652	0702		0712	0722	0732		at		1742	1752	1802		1812	1822	1832			
Camden Road				0602		0615	0625	0635			0645	0655	0705		0715	0725	0735				1745	1755	1805		1815	1825	1835			
Kentish Town West				0607		0617	0627	0637			0647	0657	0707		0717	0727	0737		the		1747	1757	1807		1817	1827	1837			
Gospel Oak				0611		0620	0630	0640			0650	0700	0710		0720	0730	0740				1750	1800	1810		1820	1830	1840			
Hampstead Heath				0613		0622	0632	0642			0652	0702	0712		0722	0732	0742		same		1752	1802	1812		1822	1832	1842			
Finchley Road & Frognal				0615		0624	0634	0644			0654	0704	0714		0724	0734	0744				1754	1804	1814		1824	1834	1844			
West Hampstead				0617		0626	0636	0646			0656	0706	0716		0726	0736	0746		time		1756	1806	1816		1826	1836	1846			
Brondesbury				0619		0628	0638	0648			0658	0708	0718		0728	0738	0748				1758	1808	1818		1828	1838	1848			
Brondesbury Park				0620		0629	0639	0649			0659	0709	0719		0729	0739	0749		past		1759	1809	1819		1829	1839	1849			
Kensal Rise				0622		0631	0641	0651			0701	0711	0721		0731	0741	0751				1801	1811	1821		1831	1841	1851			
Willesden Junction	‡	0602		0606	0626	0631	0636	0646	0656	0701		0706	0716	0726	0731	0736	0746	0756	0801		each	1806	1816	1826	1831	1836	1846	1856	1901	
Shepherd's Bush		0610	0620			0639		0654		0709	0719		0724		0739		0754		0809	0819			1824		1839		1854		1909	1919
Kensington (Olympia)		0612	0623			0641		0656		0711	0722		0726		0741		0756		0811	0822	hour		1826		1841		1856		1911	1922
West Brompton		0614	0626			0643		0658		0713	0725		0728		0743		0758		0813	0825			1828		1843		1858		1913	1925
Imperial Wharf		0617	0628			0646		0701		0716	0727		0731		0746		0801		0816	0827	until		1831		1846		1901		1916	1927
Clapham Junction		0625	0633			0653		0708		0723	0733		0738		0753		0808		0823	0833			1838		1853		1908		1923	1932
Acton Central			0611	0631		0641		0701			0711		0731		0741		0801				1811		1831		1841		1901			
South Acton			0614	0634		0644		0704			0714		0734		0744		0804				1814		1834		1844		1904			
Gunnersbury	⊖		0619	0637		0647		0707			0717		0737		0748		0808				1818		1838		1848		1908			
Kew Gardens	⊖		0622	0640		0650		0710			0720		0740		0751		0811				1821		1841		1851		1911			
Richmond	⊖		0629	0644		0656		0716			0726		0746		0756		0816				1826		1846		1856		1917			

Key to symbols and notes - see page 25

# Westbound towards Richmond / Clapham Junction

# Saturdays

21

	LO	LO	LO	LO	LO	LO	SN K	LO	LO	SN L	LO	LO	LO	LO	LO	LO	LO	LO	SN K	LO	LO	LO	LO	LO	LO	LO	SN K	LO
Stratford	1825	1835	1845		1855	1905		1915			1925	1935	1945		1955	2005	2015			2025	2035	2045		2055	2105	2115		2125
Hackney Wick	1828	1838	1848		1858	1908		1918			1928	1938	1948		1958	2008	2018			2028	2038	2048		2058	2108	2118		2128
Homerton	1831	1841	1851		1901	1911		1921			1931	1941	1951		2001	2011	2021			2031	2041	2051		2101	2111	2121		2131
Hackney Central	1833	1843	1853		1903	1913		1923			1933	1943	1953		2003	2013	2023			2033	2043	2053		2103	2113	2123		2133
Dalston Kingsland	1835	1845	1855		1905	1915		1925			1935	1945	1955		2005	2015	2025			2035	2045	2055		2105	2115	2125		2135
Canonbury	1837	1847	1857		1907	1917		1927			1937	1947	1957		2007	2017	2027			2037	2047	2057		2107	2117	2127		2137
Highbury & Islington	1840	1850	1900		1910	1920		1930			1940	1950	2000		2010	2020	2030			2040	2050	2100		2110	2120	2130		2140
Caledonian Road & Barnsbury	1842	1852	1902		1912	1922		1932			1942	1952	2002		2012	2022	2032			2042	2052	2102		2112	2122	2132		2142
Camden Road	1845	1855	1905		1915	1925		1935			1945	1955	2005		2015	2025	2035			2045	2055	2105		2115	2125	2135		2145
Kentish Town West	1847	1857	1907		1917	1927		1937			1947	1957	2007		2017	2027	2037			2047	2057	2107		2117	2127	2137		2147
Gospel Oak	1850	1900	1910		1920	1930		1940			1950	2000	2010		2020	2030	2040			2050	2100	2110		2120	2130	2140		2150
Hampstead Heath	1852	1902	1912		1922	1932		1942			1952	2002	2012		2022	2032	2042			2052	2102	2112		2122	2132	2142		2152
Finchley Road & Frognal	1854	1904	1914		1924	1934		1944			1954	2004	2014		2024	2034	2044			2054	2104	2114		2124	2134	2144		2154
West Hampstead	1856	1906	1916		1926	1936		1946			1956	2006	2016		2026	2036	2046			2056	2106	2116		2126	2136	2146		2156
Brondesbury	1858	1908	1918		1928	1938		1948			1958	2008	2018		2028	2038	2048			2058	2108	2118		2128	2138	2148		2158
Brondesbury Park	1859	1909	1919		1929	1939		1949			1959	2009	2019		2029	2039	2049			2059	2109	2119		2129	2139	2149		2159
Kensal Rise	1901	1911	1921		1931	1941		1951			2001	2011	2021		2031	2041	2051			2101	2111	2121		2131	2141	2151		2201
Willesden Junction	‡ 1905	1916	1926	1931	1936	1946		1956	2001		2006	2016	2026	2031	2036	2046	2056	2101		2106	2116	2126	2131	2136	2146	2156	2201	2206
Shepherd's Bush		1924		1939		1954	1957		2009	2019		2024		2039		2054		2111	2107		2124		2139		2154		2211	2207
Kensington (Olympia)		1926		1941		1956	2000		2011	2022		2026		2041		2056		2113	2110		2126		2141		2156		2213	2210
West Brompton		1928		1943		1958	2003		2013	2025		2028		2043		2058		2115	2113		2128		2143		2158		2215	2213
Imperial Wharf		1931		1946		2001	2005		2016	2027		2031		2046		2101		2118	2115		2131		2146		2201		2218	2215
Clapham Junction		1938		1953		2008	2010		2023	2032		2038		2053		2108		2125	2120		2138		2153		2208		2225	2220
Acton Central	1910		1931		1941			2001			2011		2031		2041		2101			2111		2131		2141		2201		2211
South Acton	1913		1934		1944			2004			2014		2034		2044		2104			2114		2134		2144		2204		2214
Gunnersbury	⊖ 1917		1938		1948			2008			2018		2038		2048		2108			2118		2138		2148		2208		2218
Kew Gardens	⊖ 1920		1941		1951			2011			2021		2041		2051		2111			2121		2141		2151		2211		2221
Richmond	⊖ 1928		1947		1957			2017			2027		2047		2057		2117			2127		2147		2158		2217		2227

Key to symbols and notes - see page 25

# Westbound towards Richmond / Clapham Junction

# Saturdays

22

	LO	LO	LO	LO	LO	LO	SN K	LO	LO	LO	SN K	LO	LO	LO
Stratford	2135	2145		2155	2215			2225	2245			2255	2315	2345
Hackney Wick	2138	2148		2158	2218			2228	2248			2258	2318	2348
Homerton	2141	2151		2201	2221			2231	2251			2301	2321	2351
Hackney Central	2143	2153		2203	2223			2233	2253			2303	2323	2353
Dalston Kingsland	2145	2155		2205	2225			2235	2255			2305	2325	2355
Canonbury	2147	2157		2207	2227			2237	2257			2307	2327	2357
Highbury & Islington	2150	2200		2210	2230			2240	2300			2310	2330	2359
Caledonian Road & Barnsbury	2152	2202		2212	2232			2242	2302			2312	2332	0002
Camden Road	2155	2205		2215	2235			2245	2305			2315	2335	0005
Kentish Town West	2157	2207		2217	2237				2307				2337	0007
Gospel Oak	2200	2210		2220	2240				2310				2340	0010
Hampstead Heath	2202	2212		2222	2242				2312				2342	0012
Finchley Road & Frognal	2204	2214		2224	2244				2314				2344	0014
West Hampstead	2206	2216		2226	2246				2316				2346	0016
Brondesbury	2208	2218		2228	2248				2318				2348	0018
Brondesbury Park	2209	2219		2229	2249				2319				2349	0019
Kensal Rise	2211	2221		2231	2251				2321				2351	0021
Willesden Junction	‡ 2216	2226	2231	2236	2256	2301			2326	2331			2354	0029c
Shepherd's Bush	2224		2239			2309	2314			2339	2349			
Kensington (Olympia)	2226		2241			2311	2316			2341	2351			
West Brompton	2228		2243			2313	2319			2343	2354			
Imperial Wharf	2231		2246			2316	2321			2346	2357			
Clapham Junction	2238		2253			2323	2326			2353	0002			
Acton Central		2231		2241	2301				2331					
South Acton		2234		2244	2304				2334					
Gunnersbury	⊖	2238		2248	2308				2338					
Kew Gardens	⊖	2241		2251	2311				2341					
Richmond	⊖	2247		2257	2317				2347					

Key to symbols and notes - see page 25



# Westbound towards Richmond / Clapham Junction

# Sundays

23

	SN	LO	SN	LO	LO	LO	LO	SN	LO	LO	LO	LO	LO	LO	LO	LO	SN	LO	LO	LO	LO	LO	LO	LO	SN	LO	LO	LO	LO			
								K									K								K							
Stratford												0915			0930																	
Hackney Wick												0918			0933																	
Homerton												0921			0936																	
Hackney Central												0923			0938																	
Dalston Kingsland												0925			0940																	
Canonbury												0927			0942																	
Highbury & Islington												0930			0945																	
Caledonian Road & Barnsbury												0932			0947																	
Camden Road												0935			0950																	
Kentish Town West												0937			0952																	
Gospel Oak												0924			0940																	
Hampstead Heath												0926			0942																	
Finchley Road & Frognal												0928			0944																	
West Hampstead												0930			0946																	
Brondesbury												0932			0948																	
Brondesbury Park												0933			0949																	
Kensal Rise												0935			0951																	
Willesden Junction	‡		0832		0856	0902	0926	0932			0940	0948	0956	1002	1011	1016	1026	1032		1041	1046	1101	1102	1116	1116	1126	1132		1136	1146	1156	1202
Shepherd's Bush		0747	0840	0850		0910		0940	0945			0954		1010		1024		1040	1045		1055		1110		1124		1140	1145		1154		1210
Kensington (Olympia)		0749	0842	0853		0912		0942	0948			0956		1012		1026		1042	1048		1056		1112		1126		1142	1148		1156		1212
West Brompton		0751	0844	0856		0914		0944	0950			0958		1014		1028		1044	1050		1058		1114		1128		1144	1150		1158		1214
Imperial Wharf		0754	0847	0858		0917		0947	0953			1001		1017		1031		1047	1053		1101		1117		1131		1147	1153		1201		1217
Clapham Junction		0758	0854	0903		0923		0953	0958			1009		1023		1038		1053	1058		1108		1128		1139		1153	1158		1209		1223
Acton Central					0901		0931				0945		1001		1016		1031			1046		1106		1121		1131		1141		1201		
South Acton					0903		0934				0947		1004		1019		1034			1049		1109		1124		1134		1144		1204		
Gunnersbury	⊖				0908		0938				0950		1008		1022		1038			1052		1112		1128		1138		1148		1208		
Kew Gardens	⊖				0911		0941				0953		1011		1025		1041			1055		1115		1131		1141		1151		1211		
Richmond	⊖				0919		0949				1003		1016		1031		1046			1101		1121		1138		1146		1156		1216		

# Westbound towards Richmond / Clapham Junction

# Sundays

24

	LO	LO	LO	LO	SN K	LO	LO	LO	LO	LO	LO	LO	LO	SN K	LO	LO	LO	LO	LO	LO	LO	SN K	LO	LO	LO	LO	SN T	LO	
Stratford	1125	1135	1145			1155	1205	1215		1225		2035	2045			2055	2105	2115		2130	2145		2200						
Hackney Wick	1128	1138	1148			1158	1208	1218		1228		2038	2048			2058	2108	2118		2133	2148		2203						
Homerton	1131	1141	1151			1201	1211	1221		1231		2041	2051			2101	2111	2121		2136	2151		2206						
Hackney Central	1133	1143	1153			1203	1213	1223		1233		2043	2053			2103	2113	2123		2138	2153		2208						
Dalston Kingsland	1135	1145	1155			1205	1215	1225		1235		2045	2055			2105	2115	2125		2140	2155		2210						
Canonbury	1137	1147	1157			1207	1217	1227		1237	then	2047	2057			2107	2117	2127		2142	2157		2212						
Highbury & Islington	1140	1150	1200			1210	1220	1230		1240		2050	2100			2110	2120	2130		2145	2200		2215						
Caledonian Road & Barnsbury	1142	1152	1202			1212	1222	1232		1242	at	2052	2102			2112	2122	2132		2147	2202		2217						
Camden Road	1145	1155	1205			1215	1225	1235		1245		2055	2105			2115	2125	2135		2150	2205		2220						
Kentish Town West	1147	1157	1207			1217	1227	1237		1247	the	2057	2107			2117	2127	2137		2152	2207		2222						
Gospel Oak	1150	1200	1210			1220	1230	1240		1250		2100	2110			2120	2130	2140		2155	2210		2225		2255		2330		
Hampstead Heath	1152	1202	1212			1222	1232	1242		1252	same	2102	2112			2122	2132	2142		2157	2212		2227		2257		2332		
Finchley Road & Frognal	1154	1204	1214			1224	1234	1244		1254		2104	2114			2124	2134	2144		2159	2214		2229		2259		2334		
West Hampstead	1156	1206	1216			1226	1236	1246		1256	time	2106	2116			2126	2136	2146		2201	2216		2231		2301		2336		
Brondesbury	1158	1208	1218			1228	1238	1248		1258		2108	2118			2128	2138	2148		2203	2218		2233		2303		2338		
Brondesbury Park	1159	1209	1219			1229	1239	1249		1259	past	2109	2119			2129	2139	2149		2204	2219		2234		2304		2339		
Kensal Rise	1201	1211	1221			1231	1241	1251		1301		2111	2121			2131	2141	2151		2206	2221		2236		2306		2341		
Willesden Junction	‡ 1206	1216	1226	1232		1236	1246	1256	1302	1306	each	2116	2126	2132		2139	2146	2156	2202	2211	2226	2232		2241	2246	2311	2316	2354c	
Shepherd's Bush		1224		1240	1245		1254		1310			2124		2140	2145		2154		2210			2240	2245		2254		2324	2345	
Kensington (Olympia)		1226		1242	1248		1256		1312		hour	2126		2142	2148		2156		2212			2242	2248		2256		2326	2348	
West Brompton		1228		1244	1250		1258		1314			2128		2144	2150		2158		2214			2244	2250		2258		2328	2350	
Imperial Wharf		1231		1247	1253		1301		1317		until	2131		2147	2153		2201		2217			2247	2253		2301		2331	2353	
Clapham Junction		1239		1254	1258		1309		1325			2139		2154	2158		2209		2224			2254	2258		2311		2340	2358	
Acton Central	1211		1231			1241		1301		1311			2131			2144		2201		2216	2231		2246		2316				
South Acton	1214		1234			1244		1304		1314			2134			2147		2204		2219	2234		2249		2319				
Gunnersbury	⊖ 1218		1238			1248		1308		1318			2138			2150		2208		2222	2238		2252		2322				
Kew Gardens	⊖ 1221		1241			1251		1311		1321			2141			2153		2211		2225	2241		2255		2325				
Richmond	⊖ 1226		1246			1256		1316		1326			2146			2157		2216		2231	2246		2301		2332				

Key to symbols and notes - see page 25

# Key to symbols and notes

⊕ Frequent District line services run between these stations. Please see London Underground publicity for more details

‡ All trains arrive and depart from the high level platforms unless otherwise indicated

LO Service run by London Overground

SN Service run by Southern

b Starts from the low level platforms

c Terminates at the low level platforms

A Continues to Watford Junction

B Starts from Balham; continues to Milton Keynes Central

C Continues to Milton Keynes Central

D Starts from East Croydon

E Starts from East Croydon; continues to Milton Keynes Central

F Starts from South Croydon

G Starts from South Croydon; continues to Milton Keynes Central

H Starts from Clapham High Street

J Starts from South Croydon; continues to Watford Junction

K Starts from Watford Junction

L Starts from Milton Keynes Central; continues to East Croydon

M Starts from Milton Keynes Central; continues to South Croydon

N Continues to Wandsworth Road

P Continues to Purley

Q Starts from Milton Keynes Central; continues to Selhurst

R Starts from Milton Keynes Central

S Starts from Watford Junction; continues to South Croydon

T Starts from Watford Junction; continues to East Croydon