

Fig 1

**Fitzroy House: 'Lord Southampton's Lodge at Highgate' 1792
(in Richardson, John *Highgate Past: A Visual History of
Highgate* (1989), pl 33)**

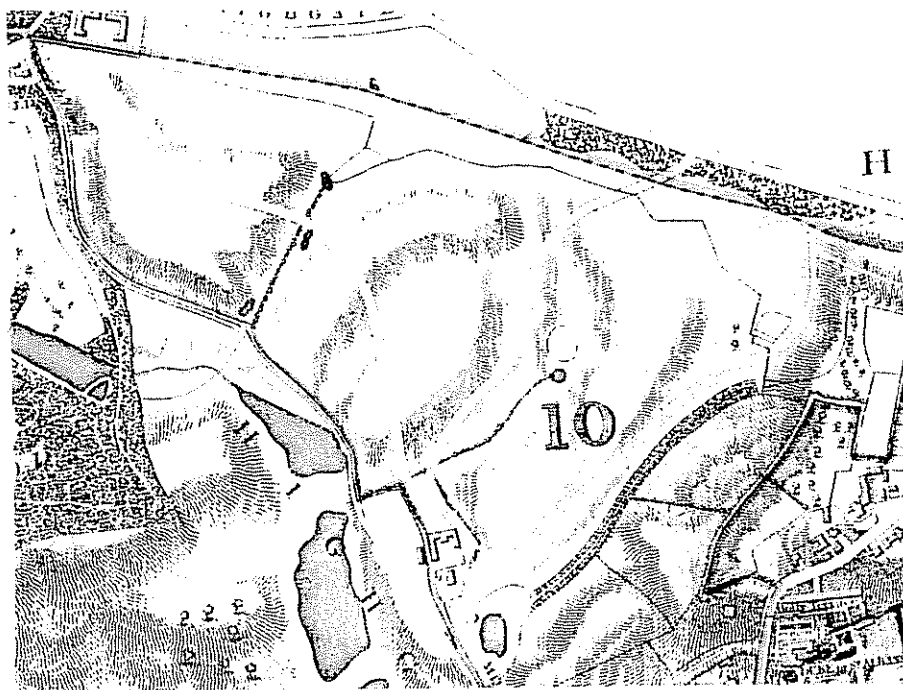


Fig 3 Topographical Survey of the Borough of St Marylebone..., 1832, surveyed and drawn by F A Bartlett and engraved by B R Davies (CLSAC)

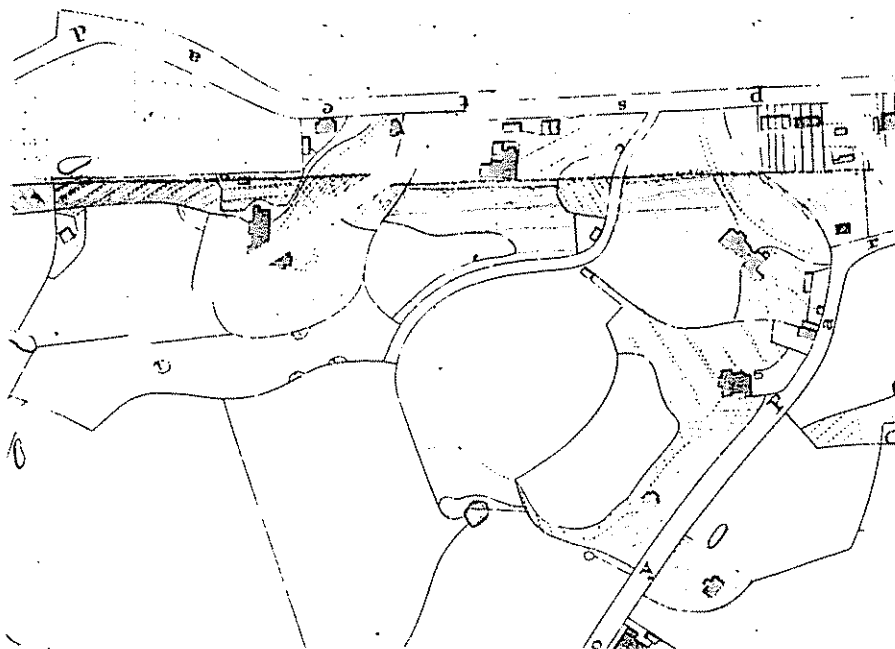


Fig 4 Map of the Parish of St Pancras in the County of Middlesex, 1860 (CLSAC)

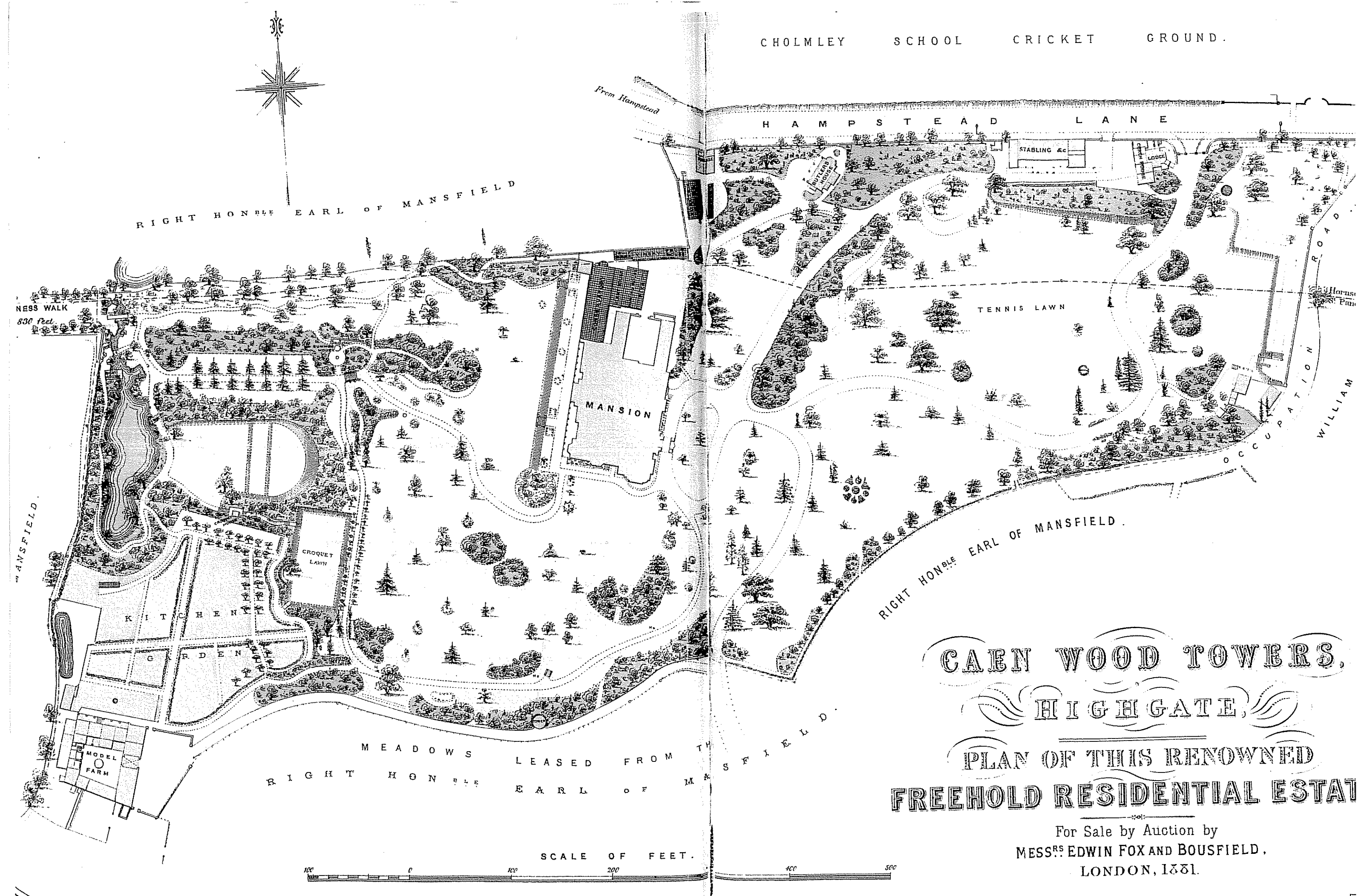


Fig 5

Plan of Caen Wood Towers in 1881 Sale Catalogue (CLSAC)



Fig 6

**Photograph of the Wellingtonia Walk, illustrated in the 1881
Sale Catalogue (CLSAC)**

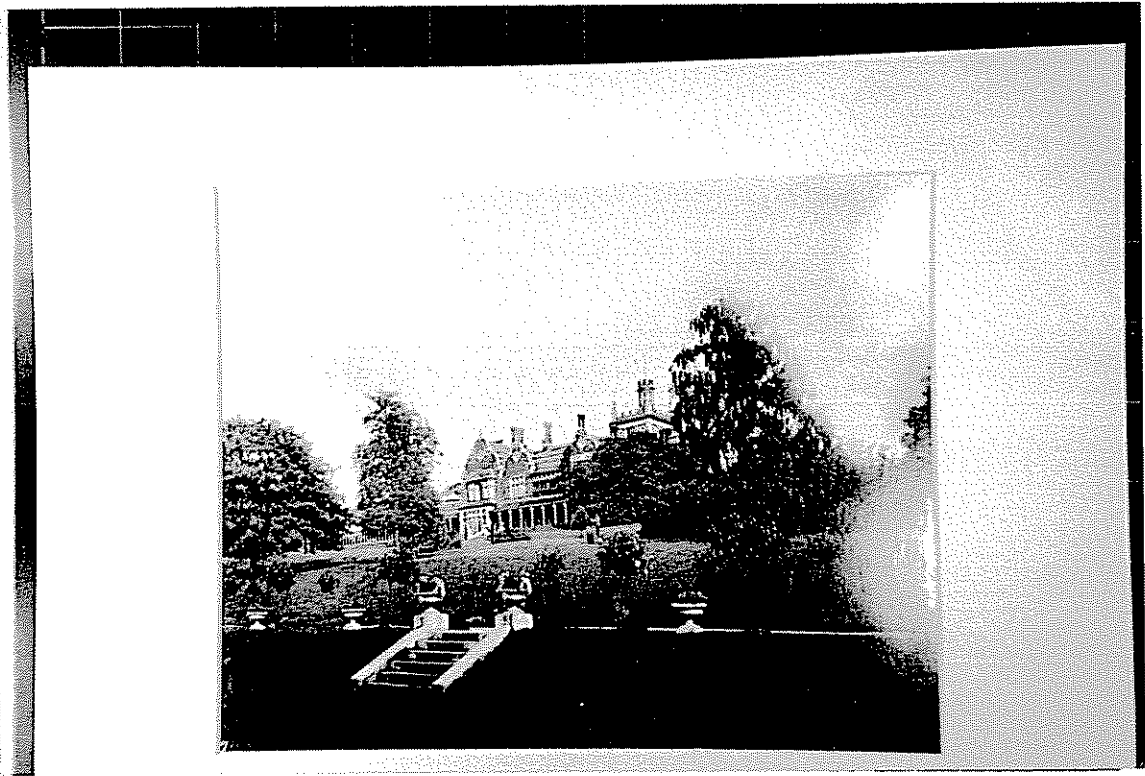


Fig 7 Photograph of the south front of the house, c1881 (CLSAC)

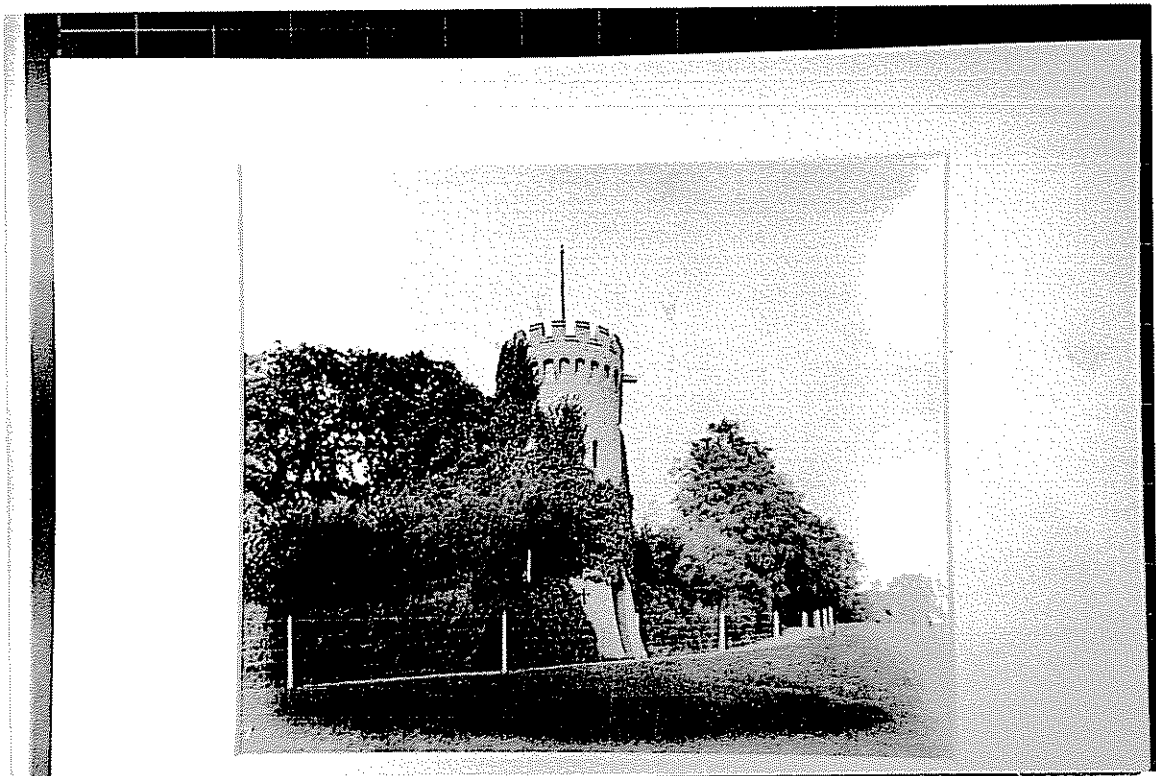


Fig 8 Photograph of the folly, c1881 (CLSAC). The drive in front of the folly or tower marked the southern boundary of the freehold land. The land shown in the foreground was meadowland leased from the Earl of Mansfield

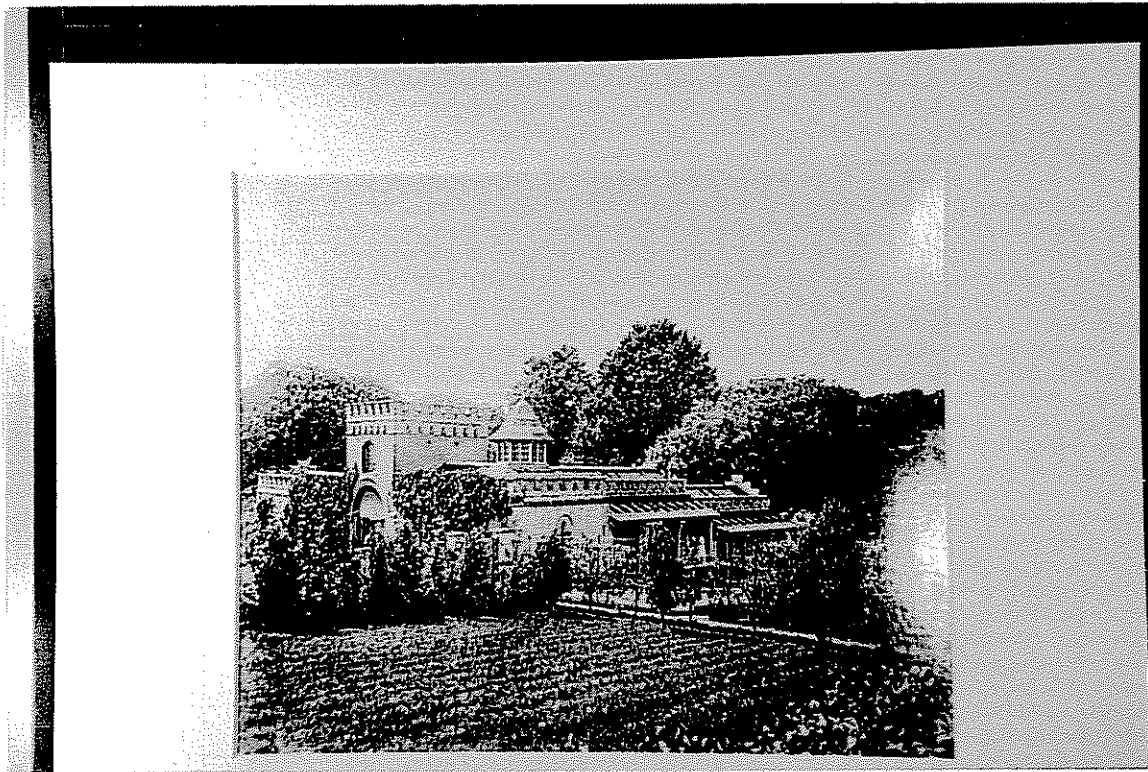


Fig 9 Photograph of the Model Farm, c1881 (CLSAC), with the kitchen garden in the foreground

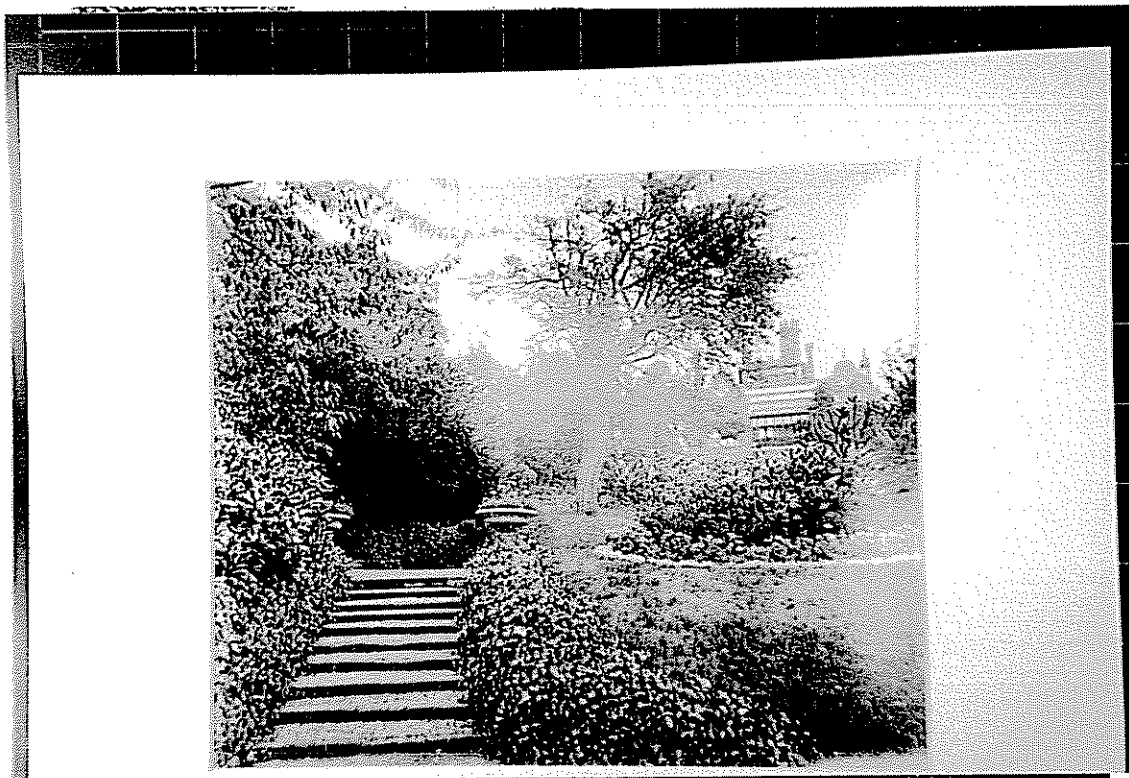


Fig 10 Photograph of the path in the gardens which led from the lawn to the west of the house, down the Wellingtonia Walk to the lake, c1881 (CLSAC)



Fig 11 **Photograph of the lawns and pleasure grounds to the east of the house, c1881 (CLSAC)**



Fig-12 **Photograph of the rustic bridge and the Pulham rockwork at the northern end of the lake, c1881 (CLSAC)**

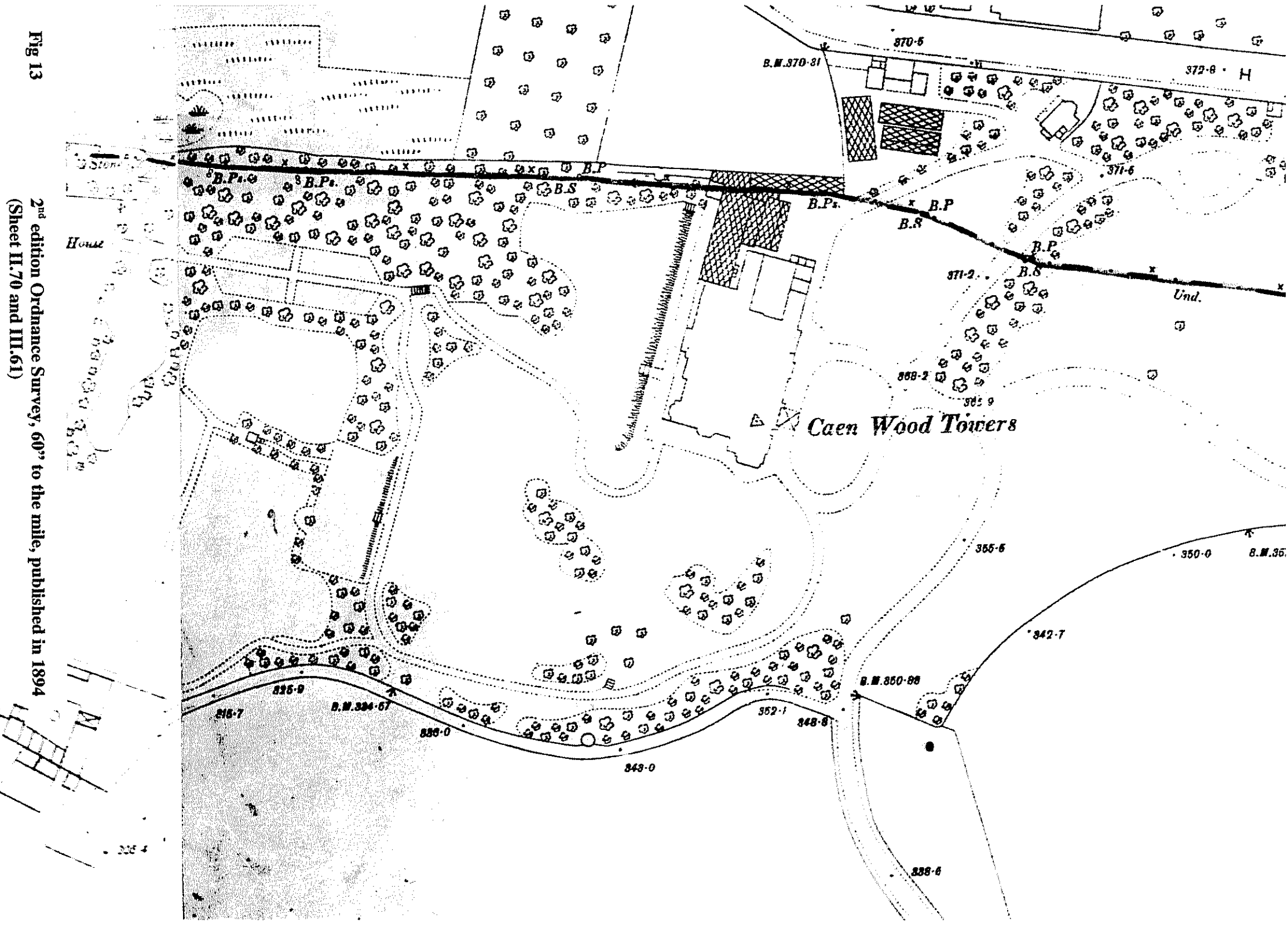


Fig 13
2nd edition Ordnance Survey, 60" to the mile, published in 1894
(Sheet II.70 and III.61)

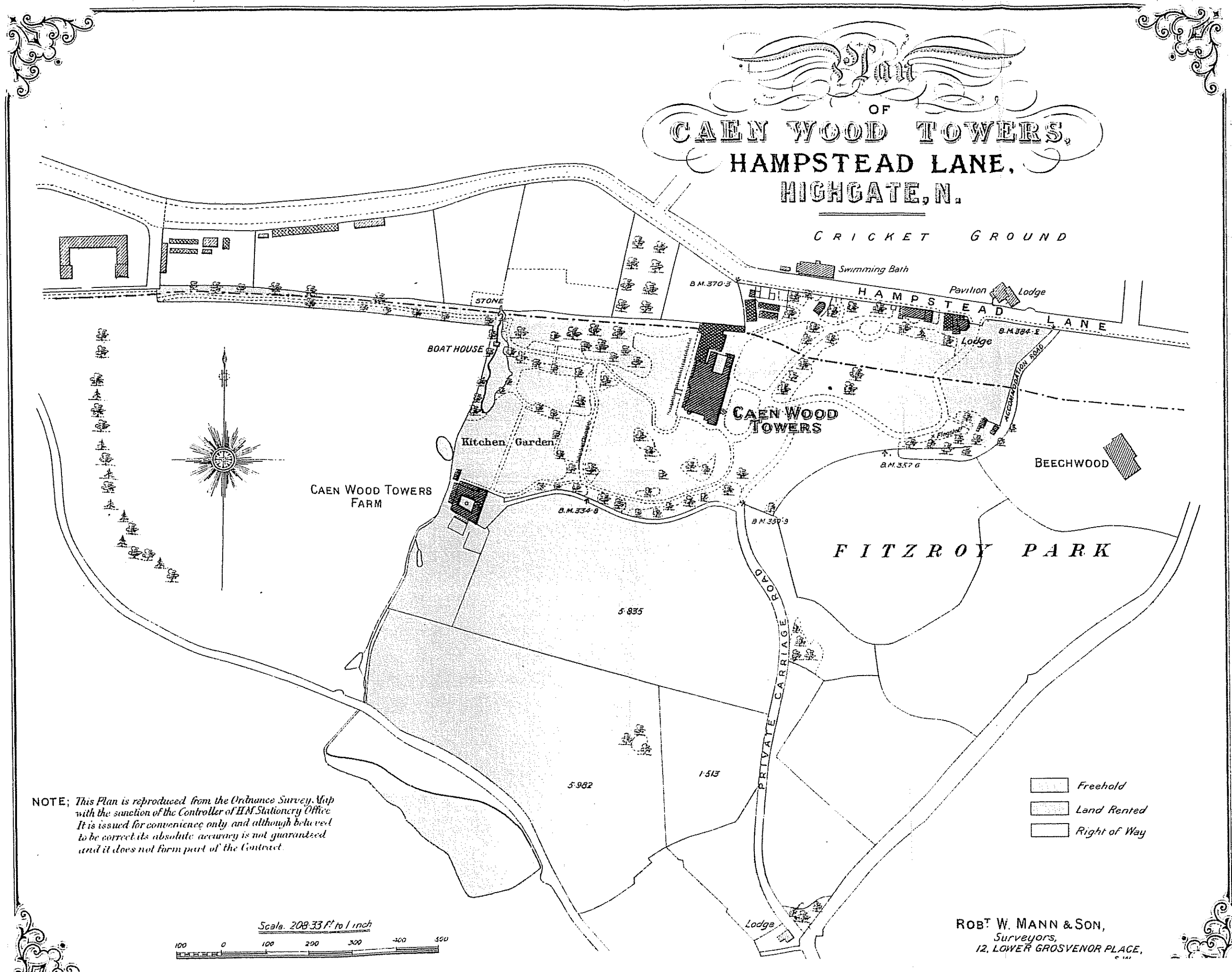
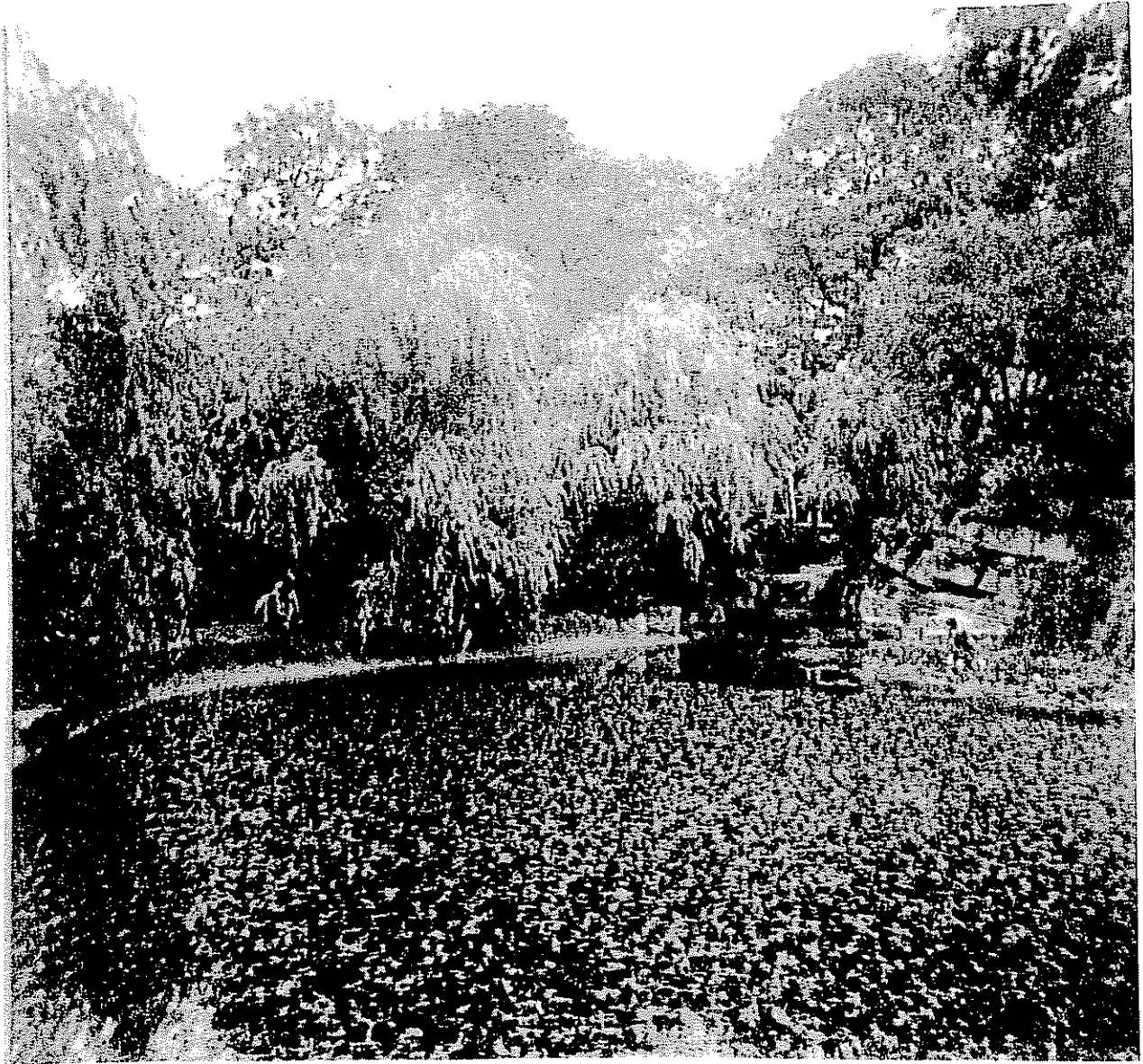


Fig 14

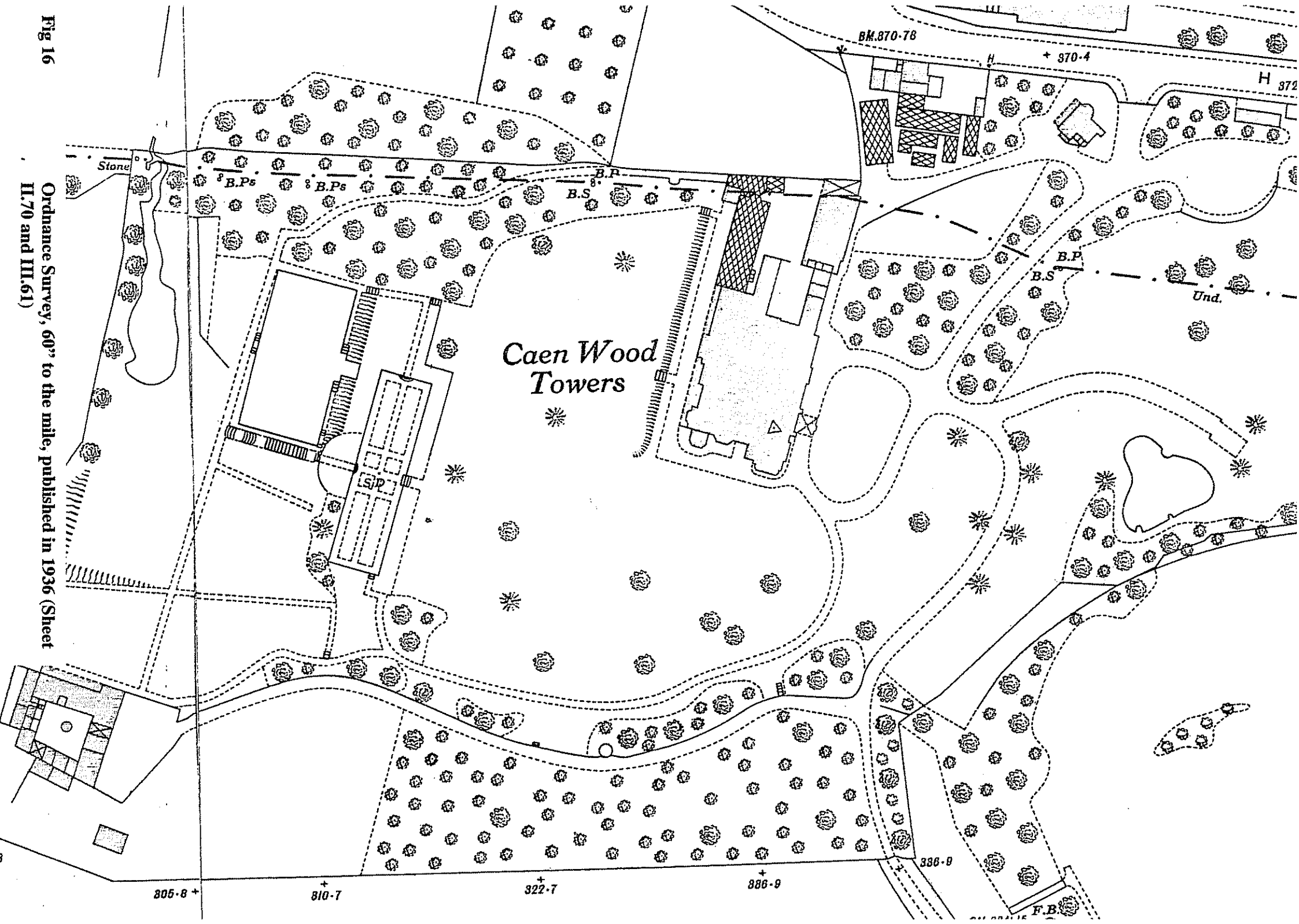
Plan of Caen Wood Towers in the 1910 Sale Catalogue
(CLSAC)



**Fig 15 Photograph of lake from western end showing Pulham rockwork c 1881
(CLSAC)**

Fig 16

Ordnance Survey, 60" to the mile, published in 1936 (Sheet II.70 and III.61)



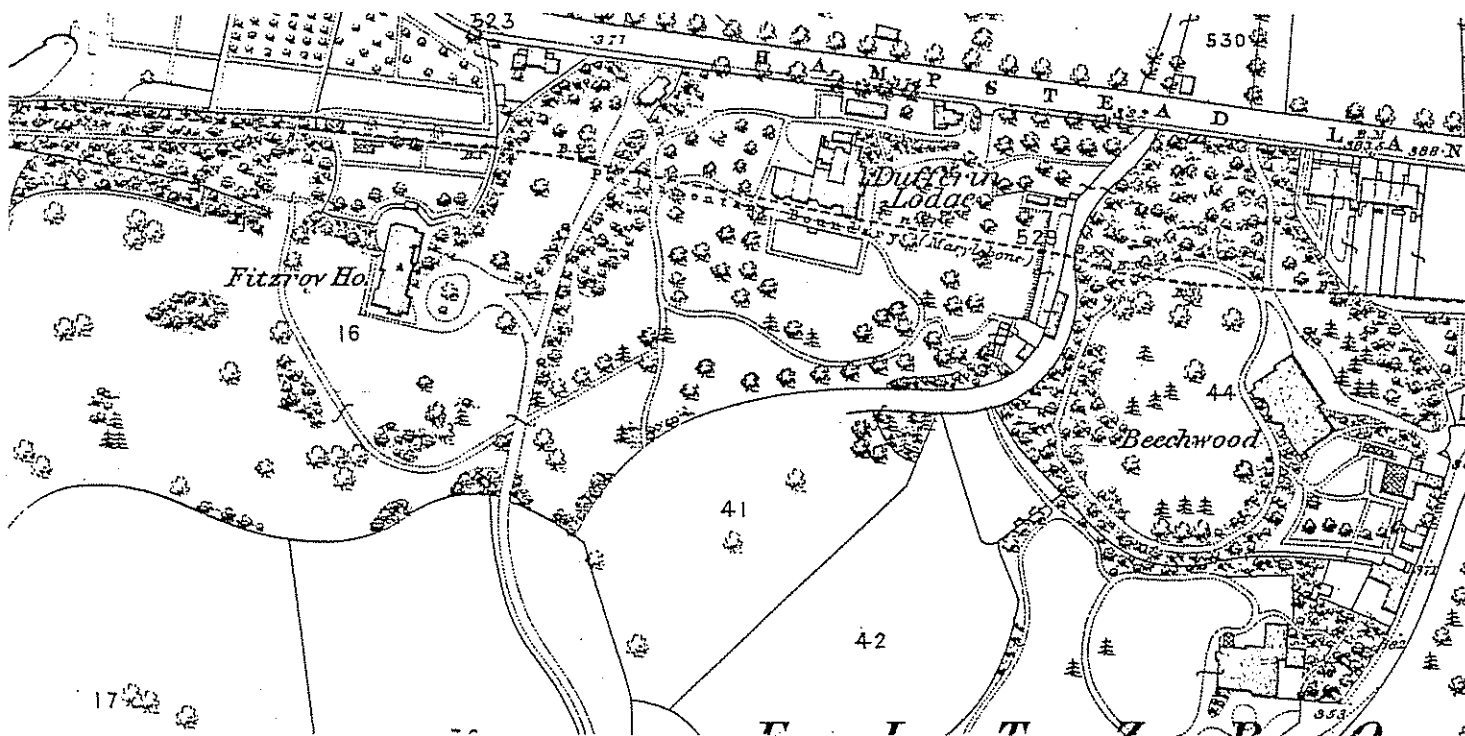


Fig 17

1st edition Ordnance Survey, 25" to the mile, 1863-69 (Sheet II.9)

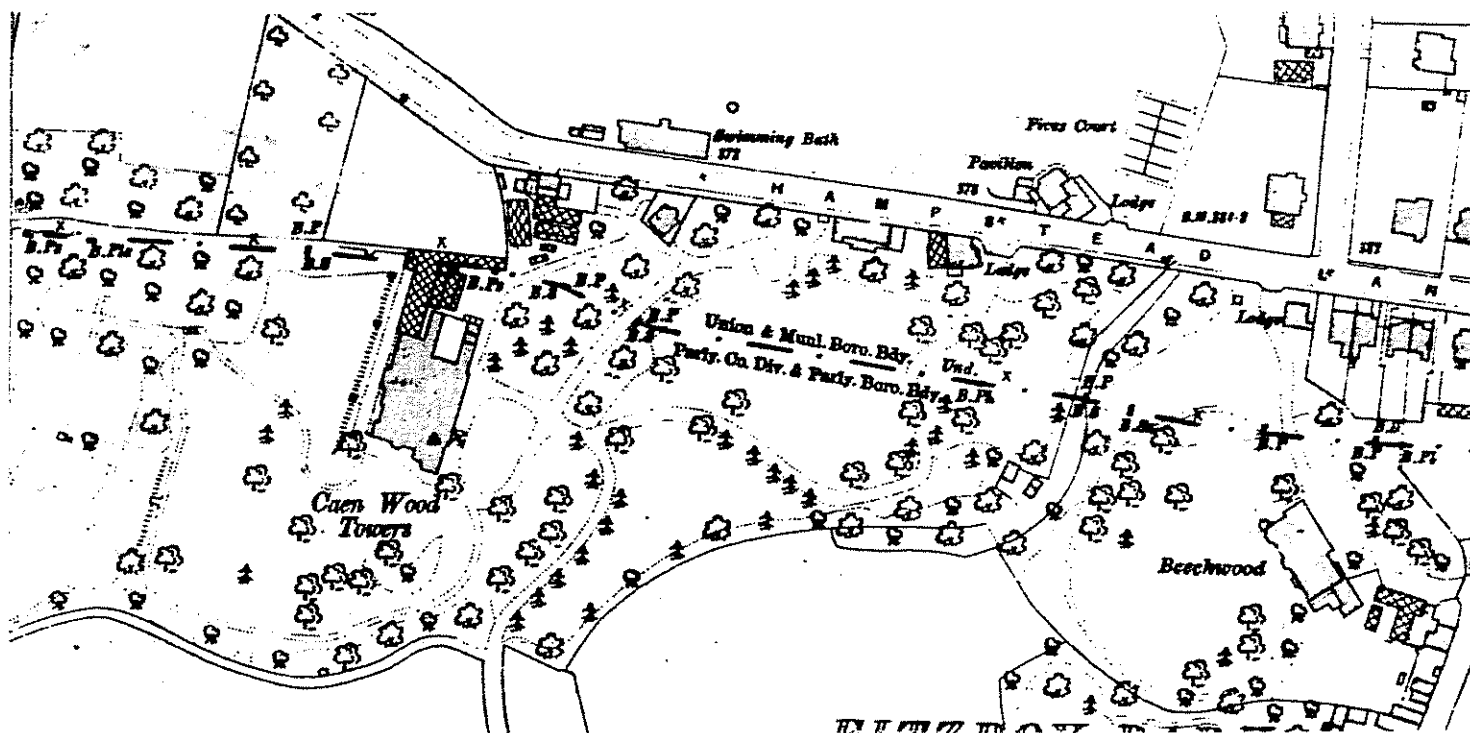


Fig 18

3rd edition Ordnance Survey, 25" to the mile, 1913 (Sheet II.9)

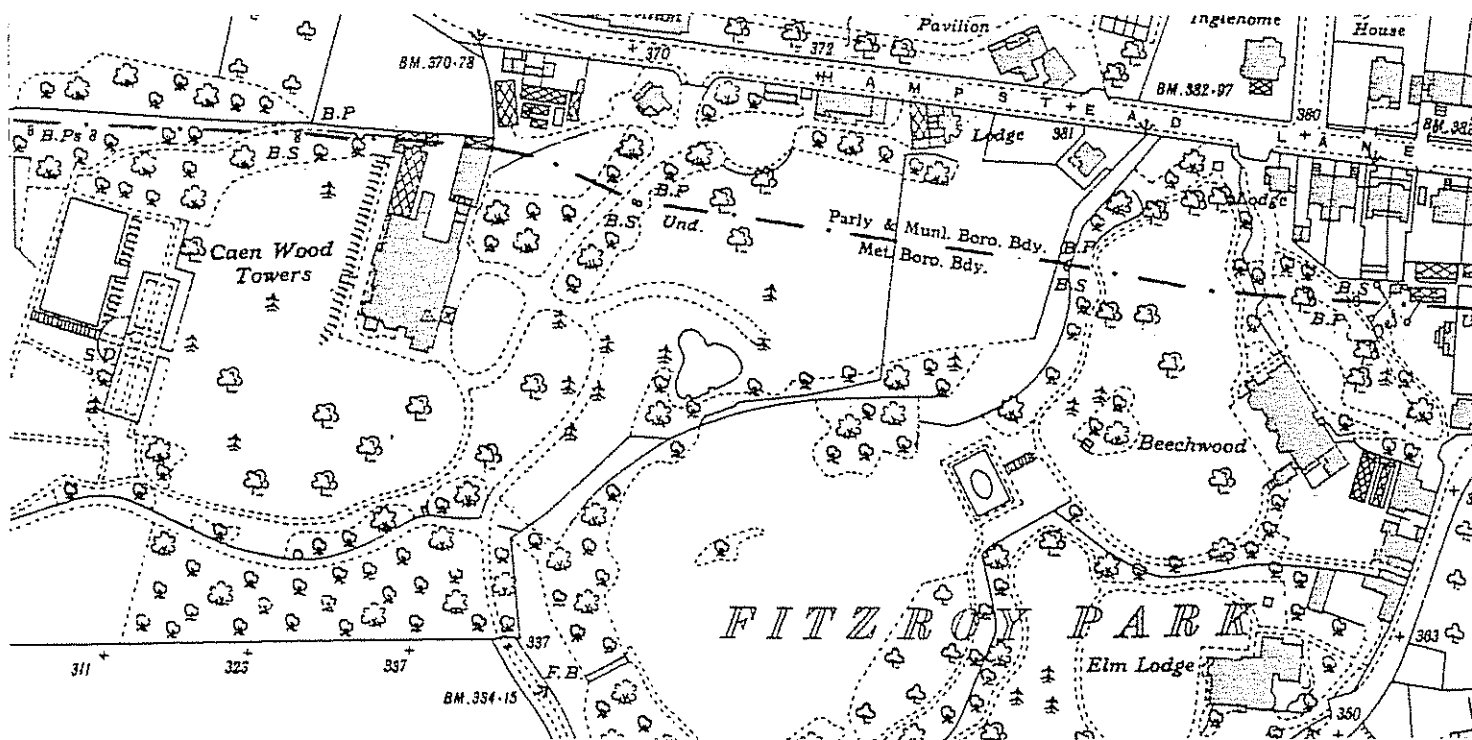


Fig 19

Ordnance Survey, 25" to the mile, 1935-36 edition (Sheet II.9)

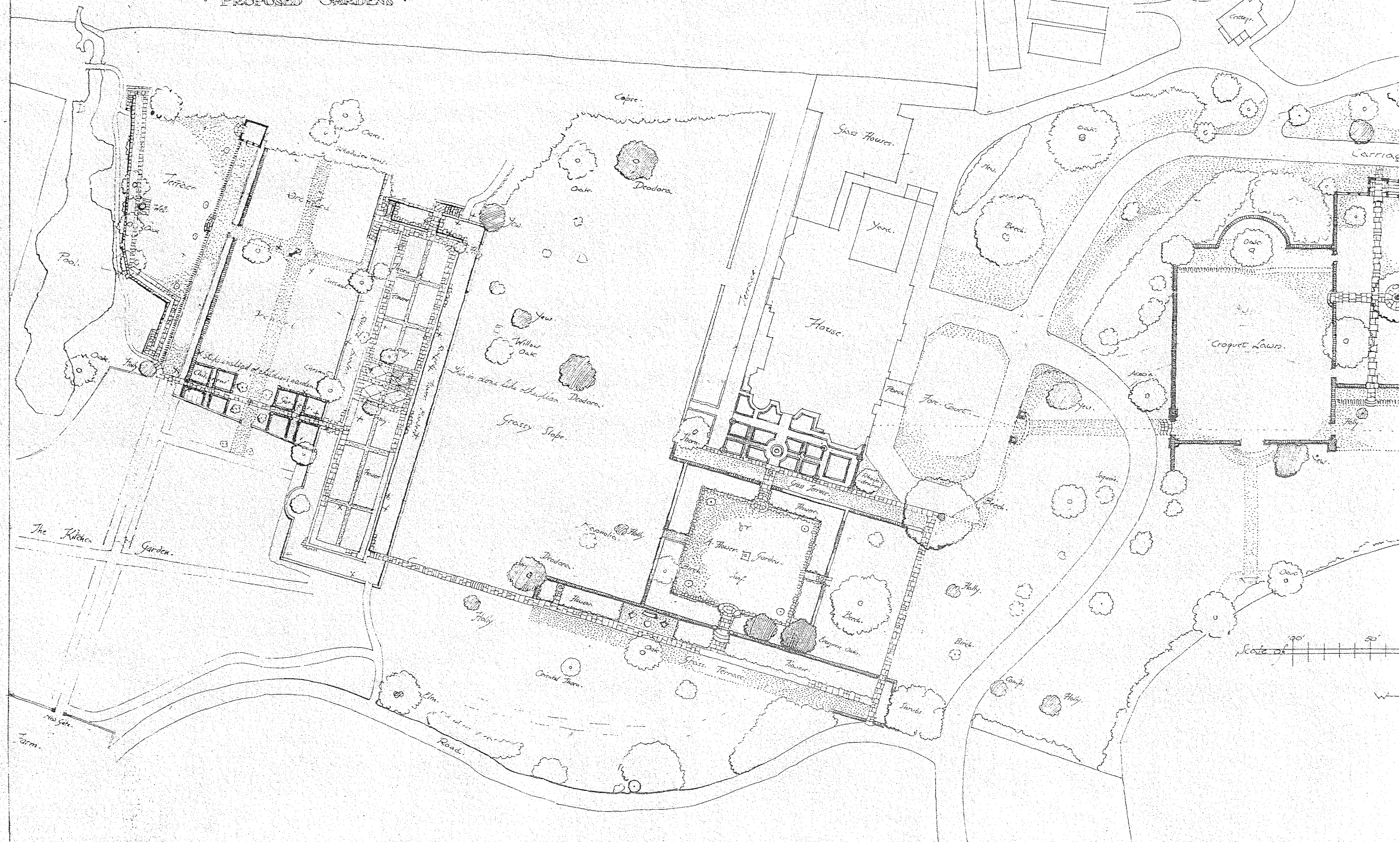


Fig 20 View of roses in sunken garden from *Gardeners Chronicle* 1928 p311

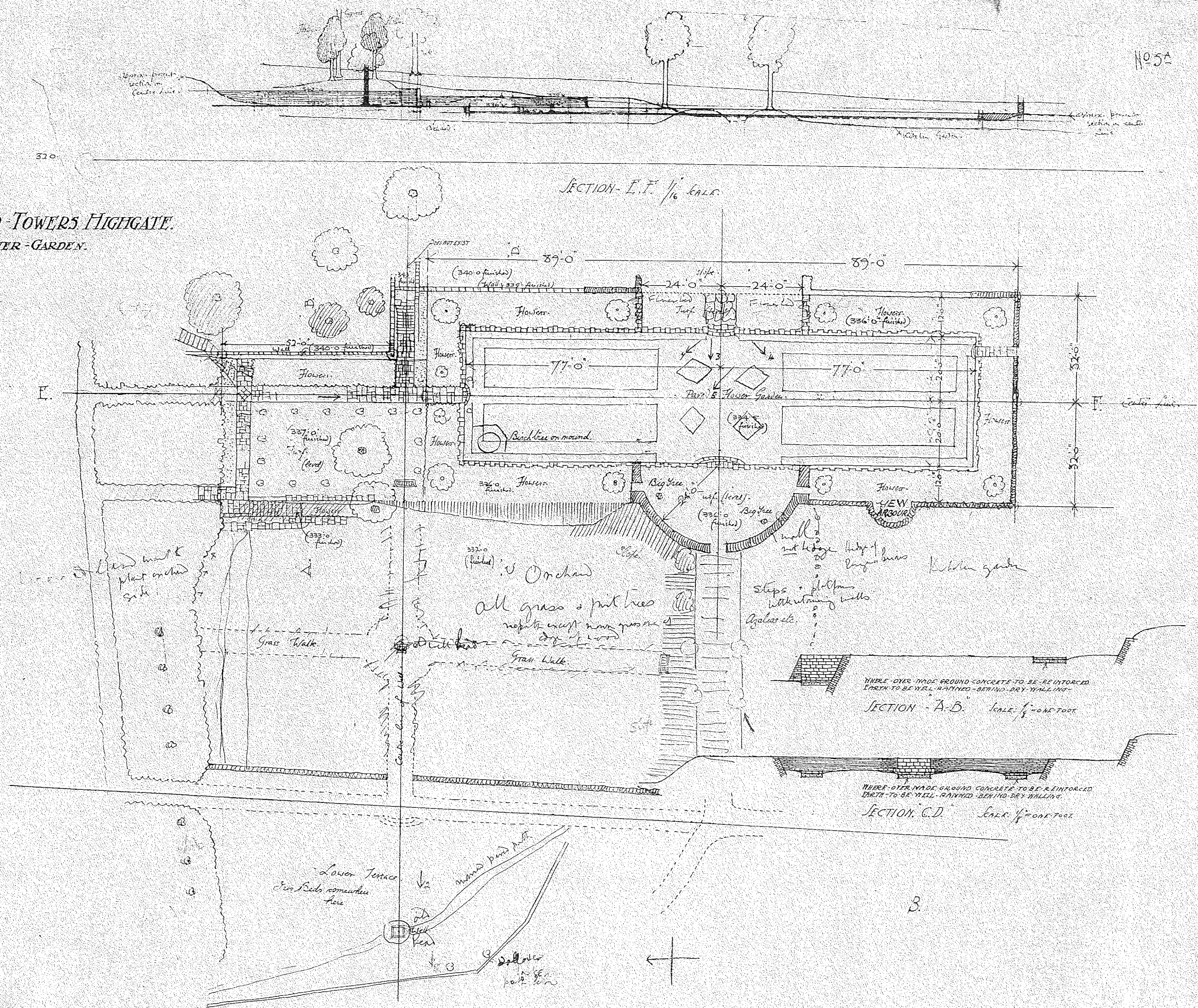
Fig 21 Plans by Gertrude Jekyll

Acknowledgement: Collection of Drawings to *Godalming Museum Local Studies Library* (Courtesy of *Gertrude Jekyll Collection (1955-1)*, *Environmental Design Archives, University of California, Berkeley*).

• PROPOSED GARDENS •



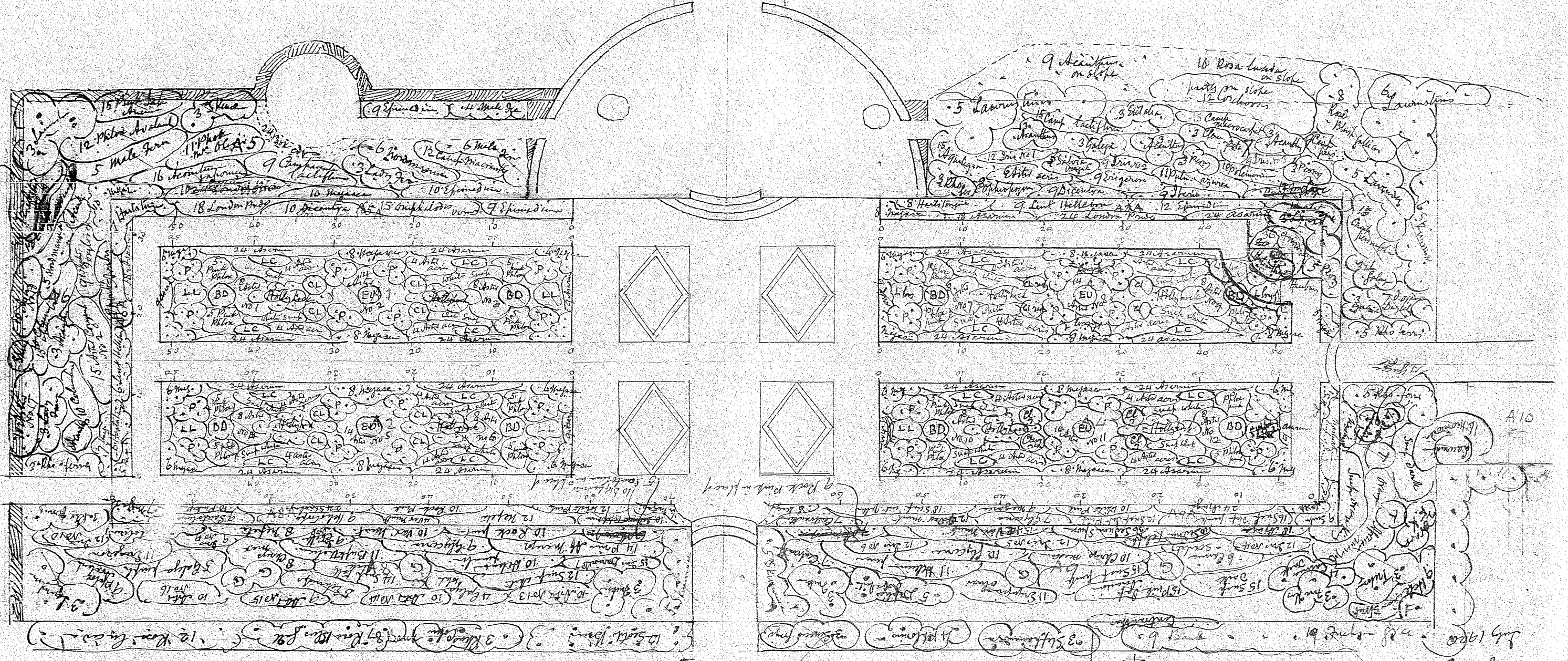
CAEN-WOOD-TOWERS HIGHGATE.
PLAN-OF-FLOWER-GARDEN.



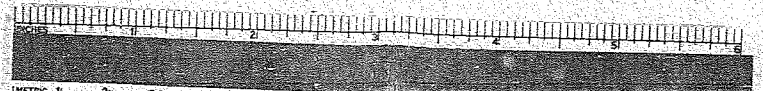
Caen top 9 acres
8 scale
August 1920

- EU = Eulalia
 BD = Blue Bl. D. Comb
 LC = 9. Liliaceae
 LL = 6 pots containing 3 each Liliaceae long flower
 P = 3 Perry
 CL = 1 Clematis recta
 G = Gypsophila paniculata

detail of Hollyhock groups
 3 dark in middle surrounded by
 6 red



8 scale
 July 1920
 Caen top - 9 acre garden



Camp Wood Towers - Lower Terrace
1/8 scale

Notes diagonally hatched in pencil, for planting
{ short red angles of octagonal step are
spaces for planting, on same level as the, void square.

