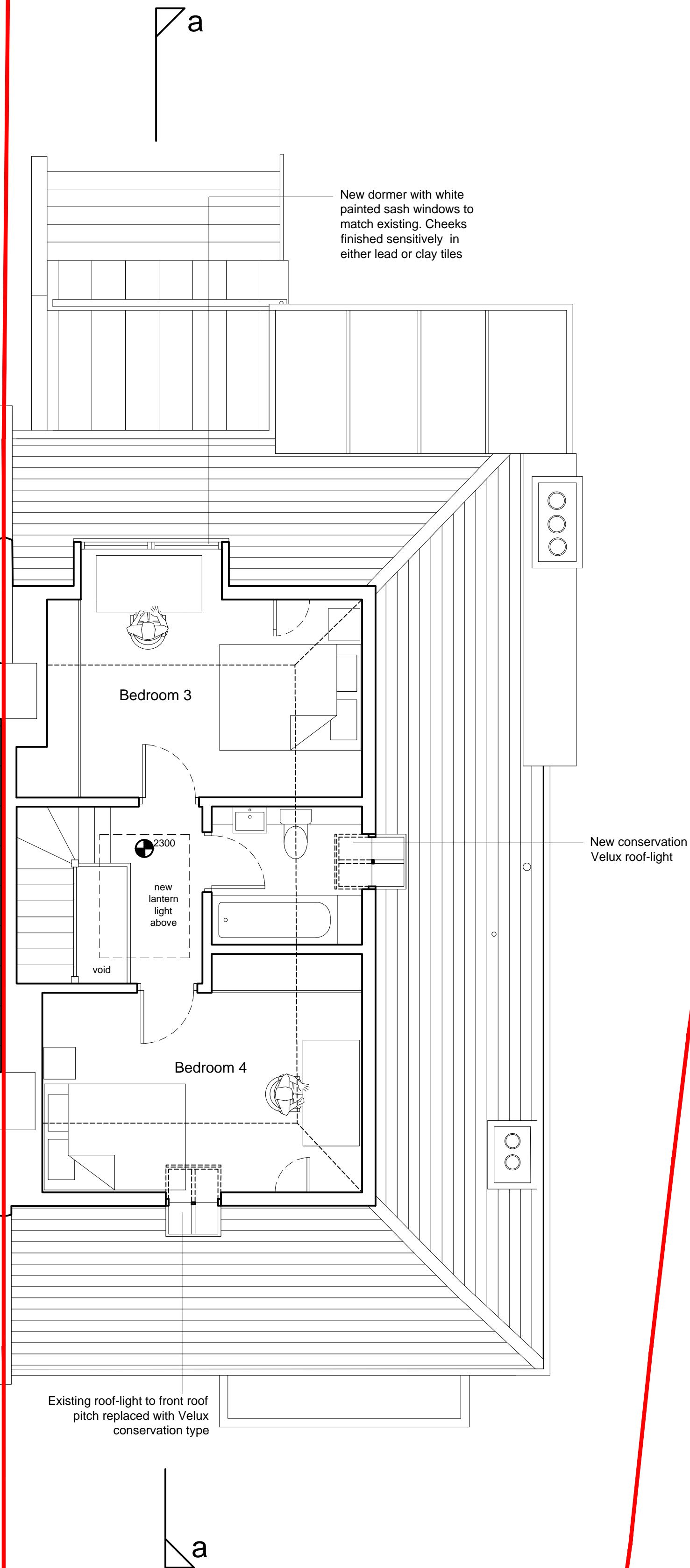
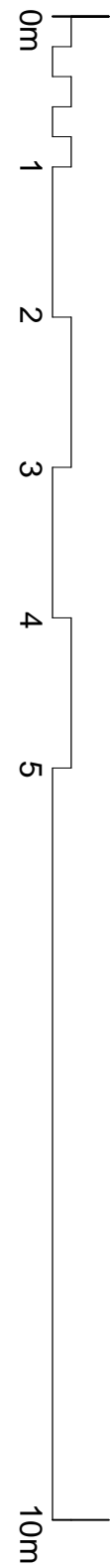


## PLANNING



REV B 09.10.13  
Roof to extension slightly enlarged as shown.

REV A 03.09.13  
Indicative boundary moved to better represent actual.  
Existing roof-light to front pitch replaced with conservation  
Velux

REV - 21.08.13  
Issued for planning

**Martin Evans**  
Architects ©

18 Charlotte Road  
London EC2A 3PB  
tel 020 7729 2474

**JOB**  
27 St Alban's Road  
NW5 1RG  
LONDON

**TITLE**  
PROPOSED  
SECOND FLOOR PLAN

<b>DATE</b>	25.07.13
<b>SCALE</b>	1:50 @ A2
<b>DRAW BY</b>	R.D. & S.N.D
<b>DRAWING NO:</b>	STA-PL-GA-03_B