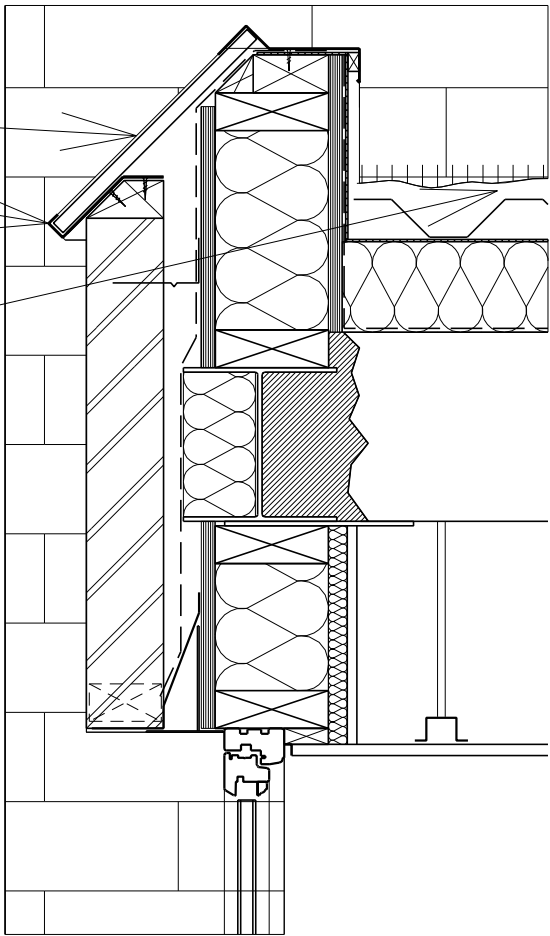
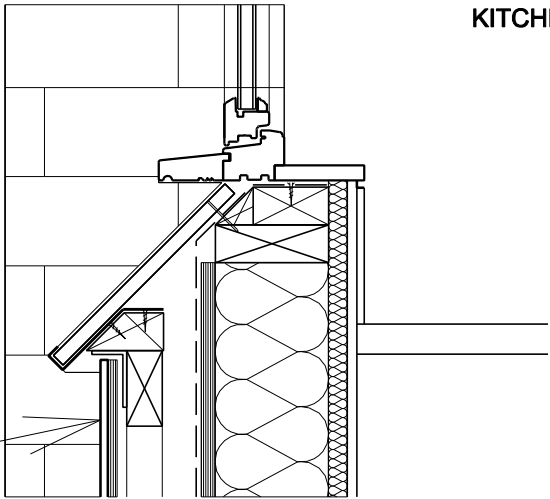


20mm honed slate nailed to timber stud beyond
Pre-formed glavanised slate clip (2no. per window cill)

Sedum roof supplied by Bauder Roofing Systems

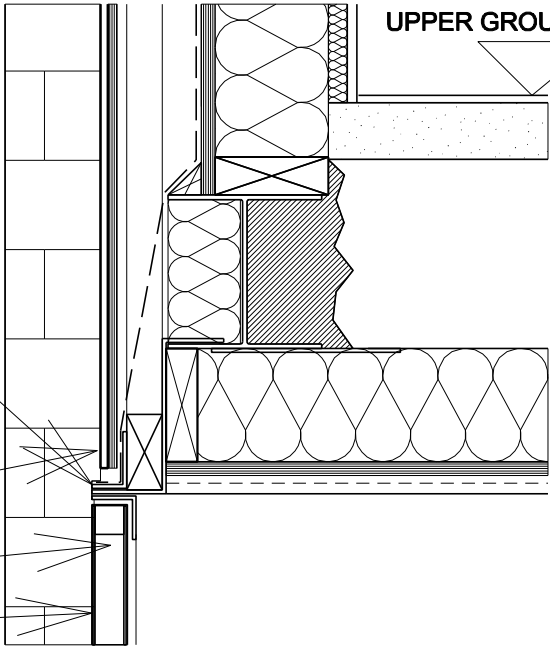


UNIT B
KITCHEN



10mm slate bonded to 15mm ply
30 x 30 x 4mm galvanised MS angles to form frame for slate

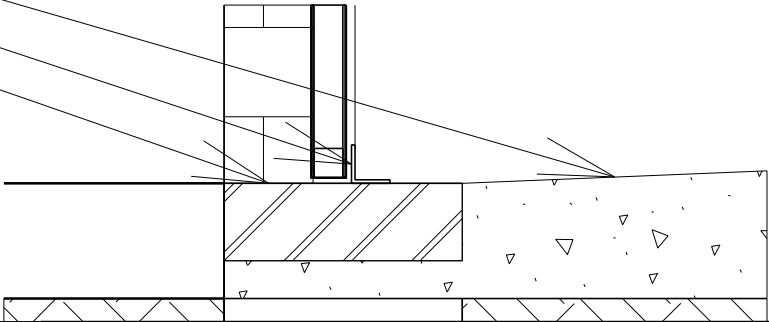
UPPER GROUND FLOOR



UNIT B
BEDROOM

45 x 45 x 4mm Glavanised steel angled door frame
45mm timber door blank cut to suit opening
5mm honed slate cladding bonded to door
Min 150mm screed, laid-to-falls
45 x 45 x 4mm Galvanised steel angle, 50mm long door stop
Reclaimed yellow London stock brick laid brick on edge

PLANNING



Revisions:				Revisions:				Job Name:				european urban architecture				<div>eu</div> <div>a</div>
Suffix / Date / Drawn by				Suffix / Date / Drawn by				2-4 PROWSE PLACE LONDON, NW1 9PH								
-	-	Drawing Title:				4TH FLOOR SOPHIA HOUSE, 32-35 FEATHERSTONE STREET, LONDON, EC1Y 8QX				
-	-	TYPICAL FRONT ELEVATION DETAILS				TEL: 020 7250-0090 FAX: 020 7250-0993				
-	-	(5 OF 5)				www.europeanurban.com				
-	-	Scale:				Job Ref:				
-	-	1:10@A3				1046R				
-	-	Date:				Drawing number:				
-	-	11/2013				AL(00) 35				
-	-	Drawn:				Revision:				
-	-	AS				-				
-	-	Checked:								
-	-	PW								