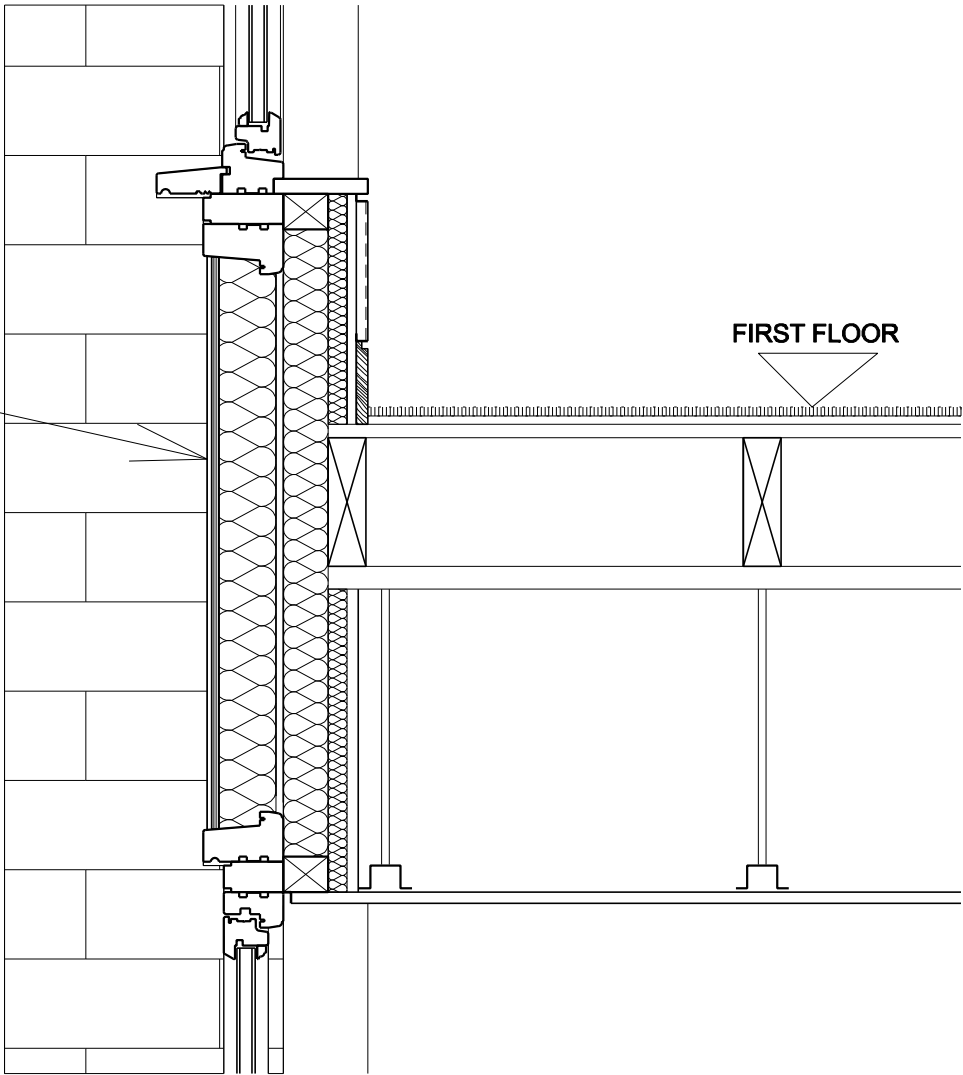
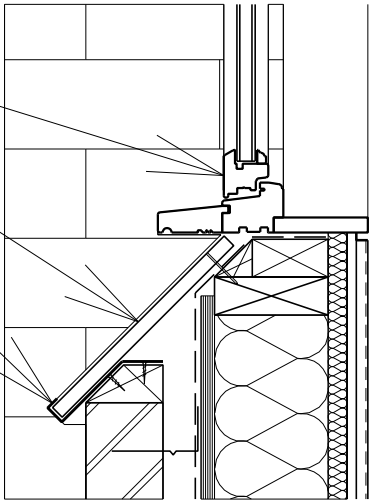


Softwood timber casement window, factory painted dark grey/black
Double glazed unit, toughened with argon filled cavity

UNIT A
BEDROOM



Back painted (light grey to match slate) 10mm insulated glazing panel.
Frame to match windows (supplied by window manufacturer)



Softwood timber casement window, factory painted dark grey/black
20mm honed slate nailed to timber stud beyond
Pre-formed galvanised slate clip (2no. per window cill)

UNIT A
KITCHEN

PLANNING

Revisions:				Revisions:				Job Name:				european urban architecture			
Suffix / Date / Drawn by				Suffix / Date / Drawn by				2-4 PROWSE PLACE				eu			
-	-	LONDON, NW1 9PH				a			
-	-	Drawing Title:				4TH FLOOR SOPHIA HOUSE, 32-35 FEATHERSTONE STREET, LONDON, EC1Y 8QX			
-	-	TYPICAL FRONT ELEVATION DETAILS				TEL: 020 7250-0090 FAX: 020 7250-0993			
-	-	(2 OF 5)				www.europeanurban.com			
-	-	Scale:				Job Ref:			
-	-	1:10@A3				1046R			
-	-	Date:				Drawing number:			
-	-	11/2013				AL(00) 32			
-	-	Drawn:				Revision:			
-	-	AS				-			
-	-	Checked:							
-	-	PW							