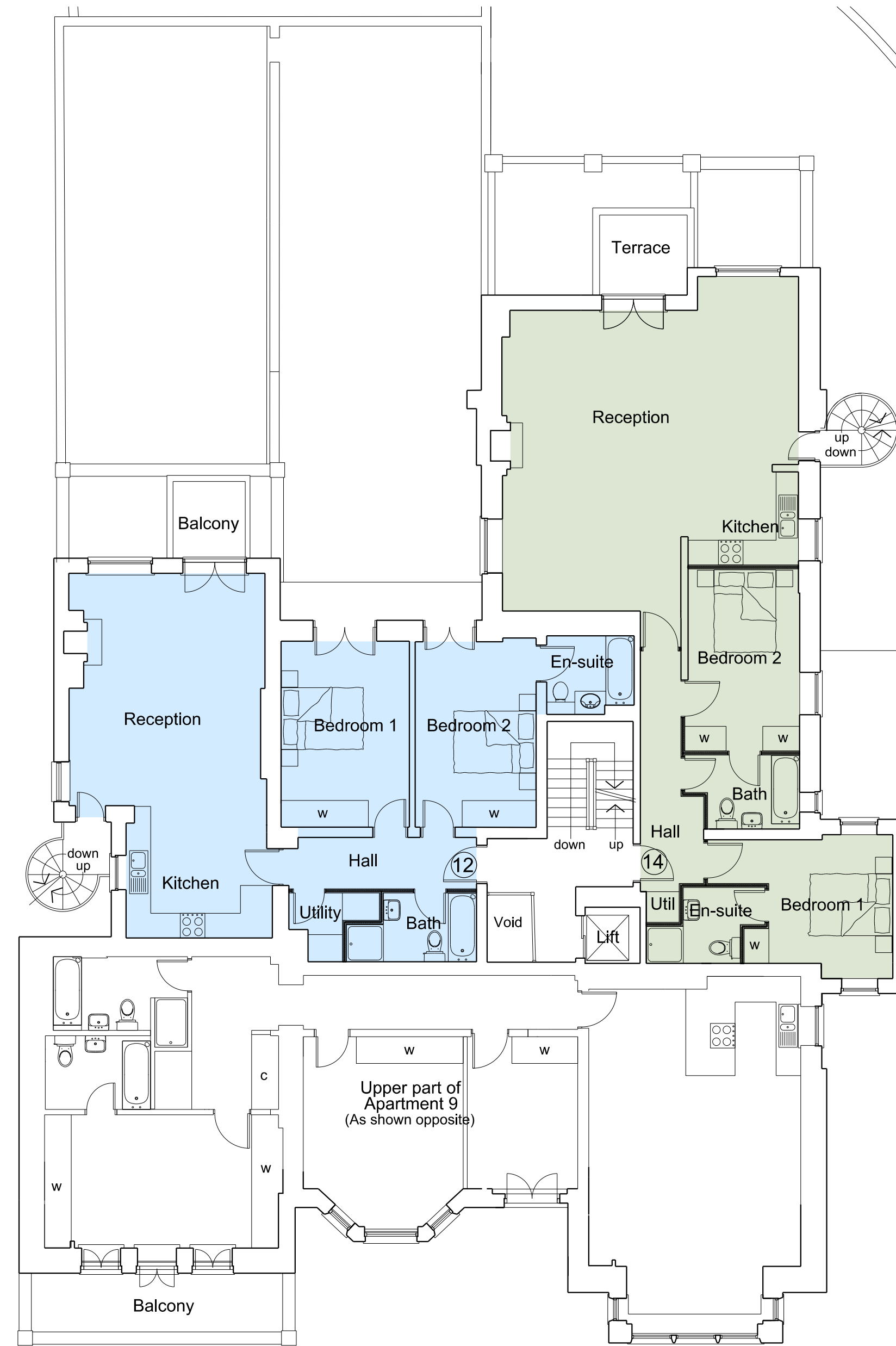


Proposed First Floor Plan



Proposed Second Plan

Notes:

Do not scale from this drawing except for Planning purposes.
Work from figured dimensions only.
All dimensions to be checked on site prior to commencement of work.

Schedule of Gross Internal Areas:

Apartment 9 - 3 Bedroom = 118.1 s.m. (1,271 s.f.)
Apartment 10 - 2 Bedroom = 84.4 s.m. (908 s.f.)
Apartment 11 - 2 Bedroom = 94.2 s.m. (1,014 s.f.)
Apartment 12 - 2 Bedroom = 84.6 s.m. (910 s.f.)
Apartment 14 - 2 Bedroom = 94.3 s.m. (1,015s.f.)

Revisions:

A: (02.11.13) Window to Bed 2, Appt. 11 increased to 1600 wide

Project:

Proposed Basement Extension and Internal Alterations and Refurbishment of 51 Fitzjohn's Avenue London NW3 6PH

Title: Proposed First & Second Floor Plans

Scale: 1:100 @ A1

Date: April 2013

Oakley Hough.

The Barn, Stebbing Farm
Fishers Green, Stevenage,
Hertfordshire SG1 2JB

Tel: 01438 745288
Mobile: 07710 549 270
e-mail: john@oakleyhough.co.uk

Drawing Number.

885/12 A

