

# 1307 - The Cruciform

## Record of Historic Features and Proposals for Retention

November 2013



HUNTLEY STREET

UNIVERSITY STREET

GRAFTON WAY

GOWER STREET

PROJECT BOUNDARY

AREAS OF GLAZED BRICK POST STRIP OUT. SEE APPENDIX FOR PHOTOS OF BRICK EXPOSED NUMBERED 1-15

HISTORICAL FEATURES FOUND AND RETAINED. REFER TO APPENDIX PHOTOS.

HISTORICAL FEATURES FOUND, RETAINED AND EXPOSED. REFER TO APPENDIX PHOTOS

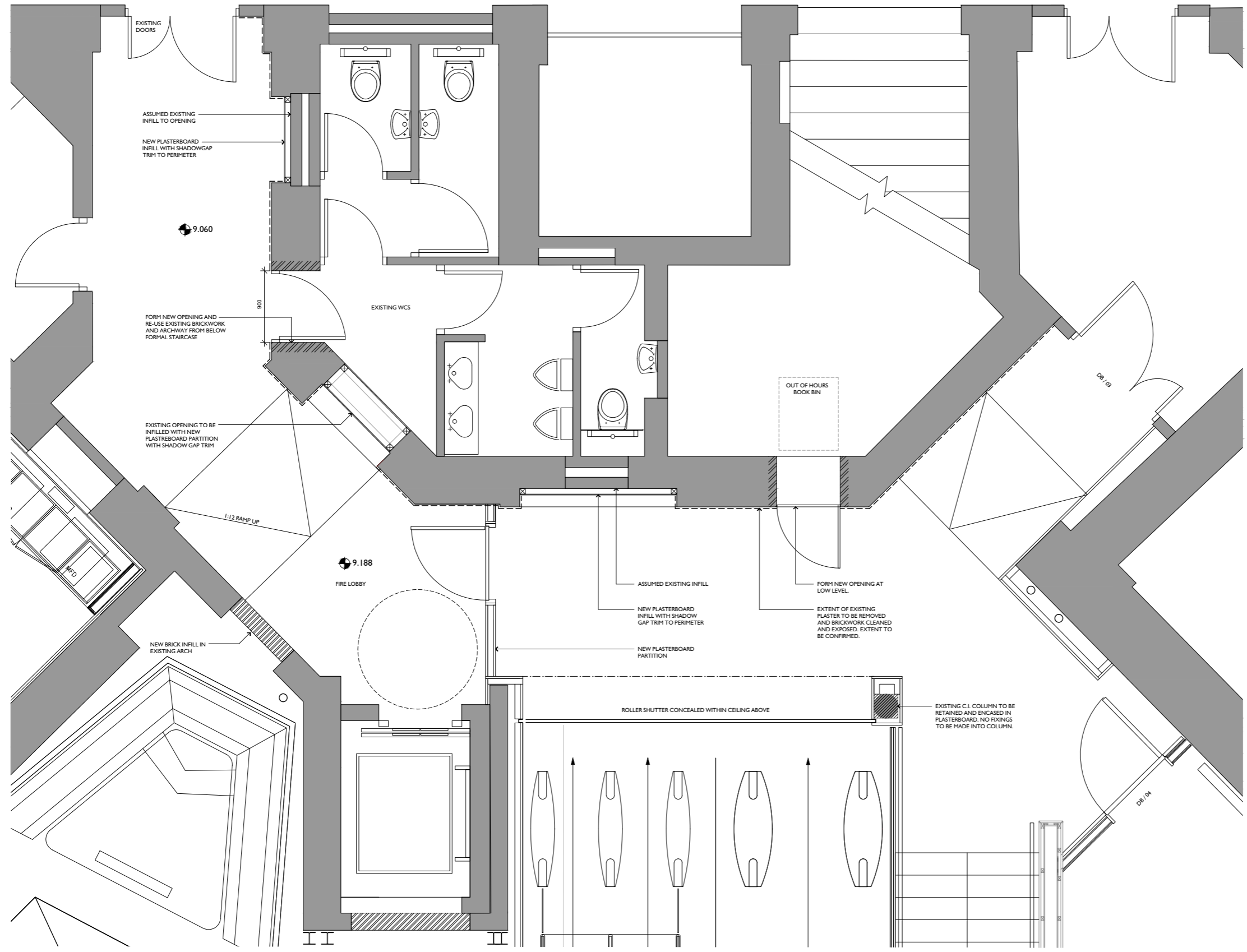
DETAIL PROPOSAL FOR RETENTION EXPOSURE OF HISTORIC ELEMENTS. REFER TO DL(72)31a

EXISTING GLAZED BRICK ARCH TO BE SALVAGED AND RE-USED

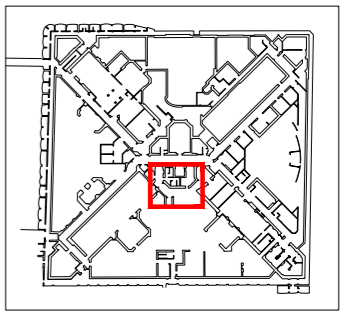
EXISTING GLAZED BRICK ARCH TO BE SALVAGED AND RE-USED

REFER TO DL(72)322a

0 5 10 20 metres



--- EXTENT OF EXISTING PLASTER TO BE REMOVED AND BRICKWORK CLEANED AND EXPOSED.



Status	Description	date	drawn by	checked by	Status	Description	date	drawn by	checked by
-	HISTORIC PROPOSAL FOR STAIR ENCLOSURE/EMNTRANCE LOBBY	20.11.2013		NB					

"copyright and ownership of this drawing is vested in paul murphy architects whose prior written consent is required for its use, reproduction or for publication to any third party. all rights reserved by the law of copyright and by international copyright conventions are reserved to paul murphy architects and may be protected by court proceedings for damages and/or injunctions and costs."

do not scale this drawing  
all written dimensions are in millimetres  
any inconsistencies to be reported to the architect immediately

© paul murphy architects 2007

**CAMERON BLACK**  
49 Marylebone High Street  
London  
W1U 5HU

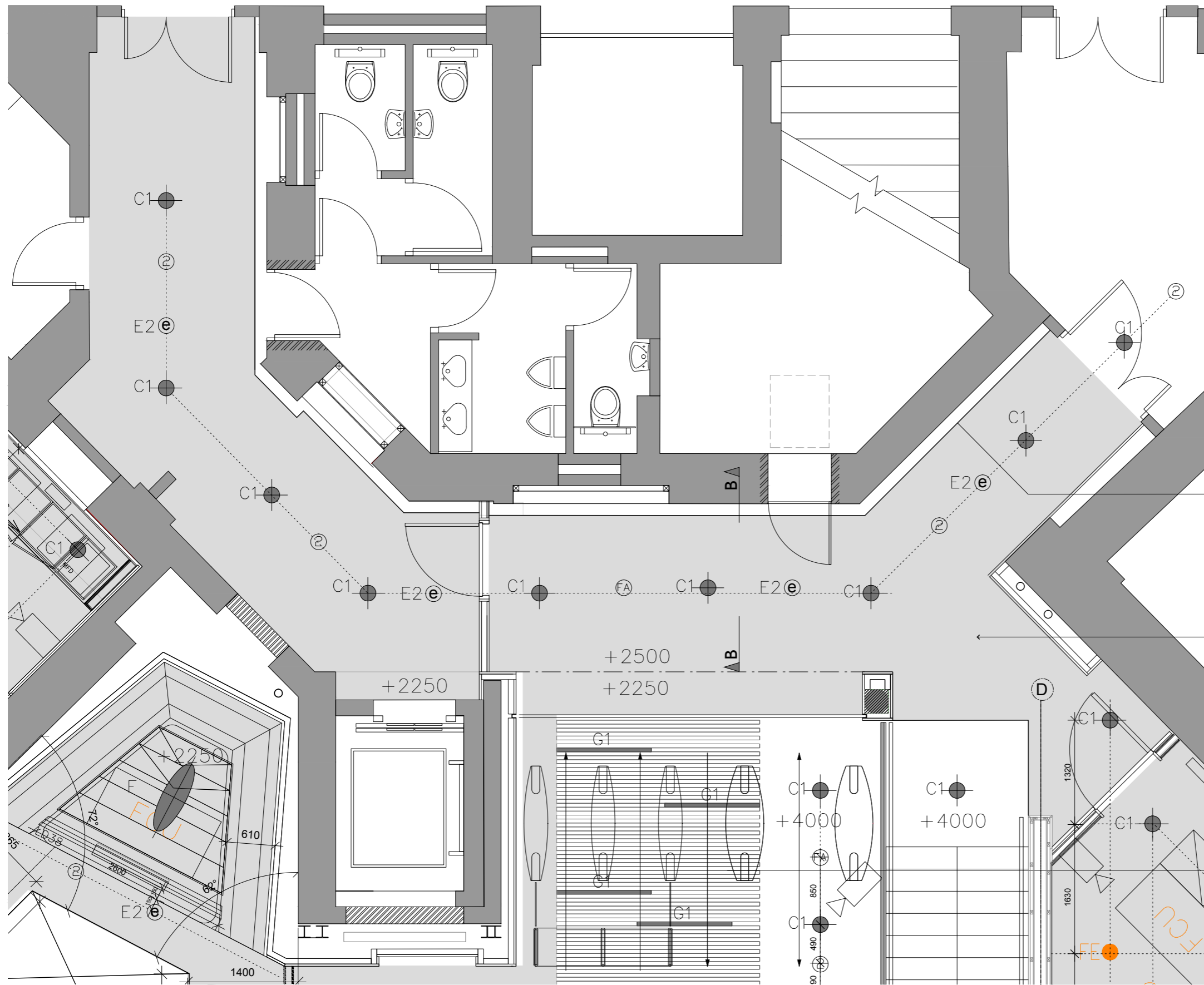
T. 020 7636 8058  
F. 020 7637 8062  
E. [admin@cameronblack.com](mailto:admin@cameronblack.com)

**PaulMurphyArchitects**

The Foundry  
7 Glenthorne Mews  
London W6 0LJ

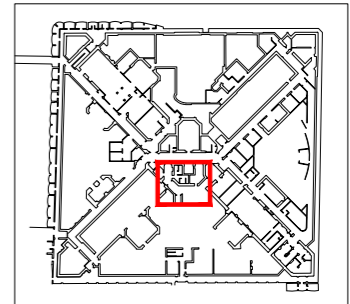
client UCL  
project CRUCIFORM STUDENT HUB PROJECT  
drawing Stair enclosure/Entrance Lobby Historic Proposal  
stage JKL scale 1:25@A1  
no 1307 DL(72) 321a rev -

T 020 8846 2520  
F 020 8846 2521  
info@paulmurphyarchitects.co.uk  
www.paulmurphyarchitects.co.uk



SHADOW GAP ALONG GLAZED BRICK WALL

PLASTERBOARD MF CEILING



Status	Description	date	drawn by	checked by	Status	Description	date	drawn by	checked by
	RCP - HISTORIC PROPOSAL FOR STAIR ENCLOSURE/ENTRANCE LOBBY	20.11.2013		NB					

"copyright and ownership of this drawing is vested in paul murphy architects whose prior written consent is required for its use, reproduction or for publication to any third party. all rights reserved by the law of copyright and by international copyright conventions are reserved to paul murphy architects and may be protected by court proceedings for damages and/or injunctions and costs."

do not scale this drawing  
all written dimensions are in millimetres  
any inconsistencies to be reported to the architect immediately

© paul murphy architects 2017

**CAMERONBLACK**  
49 Marylebone High Street  
London  
W1U 5HU

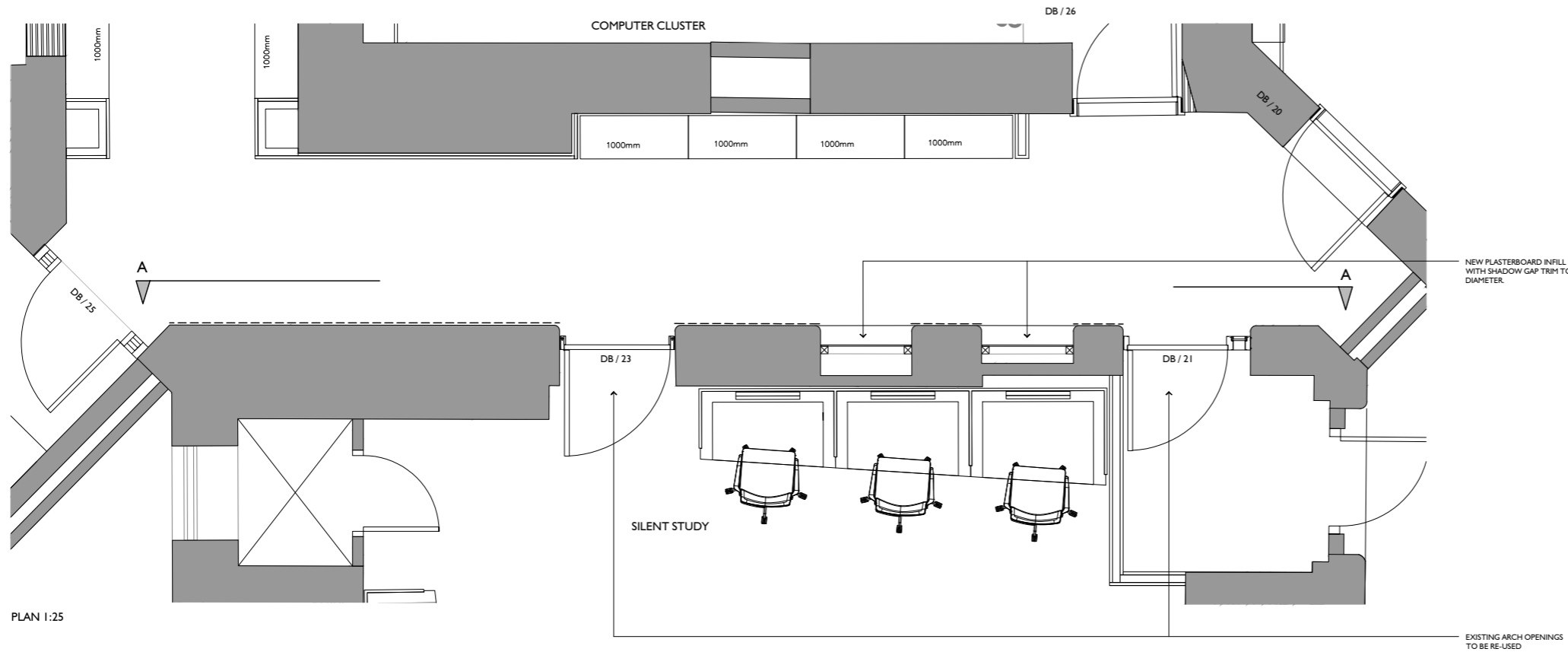
T. 020 7636 8058  
F. 020 7637 8062  
E. [admin@cameronblack.com](mailto:admin@cameronblack.com)

**PaulMurphyArchitects**

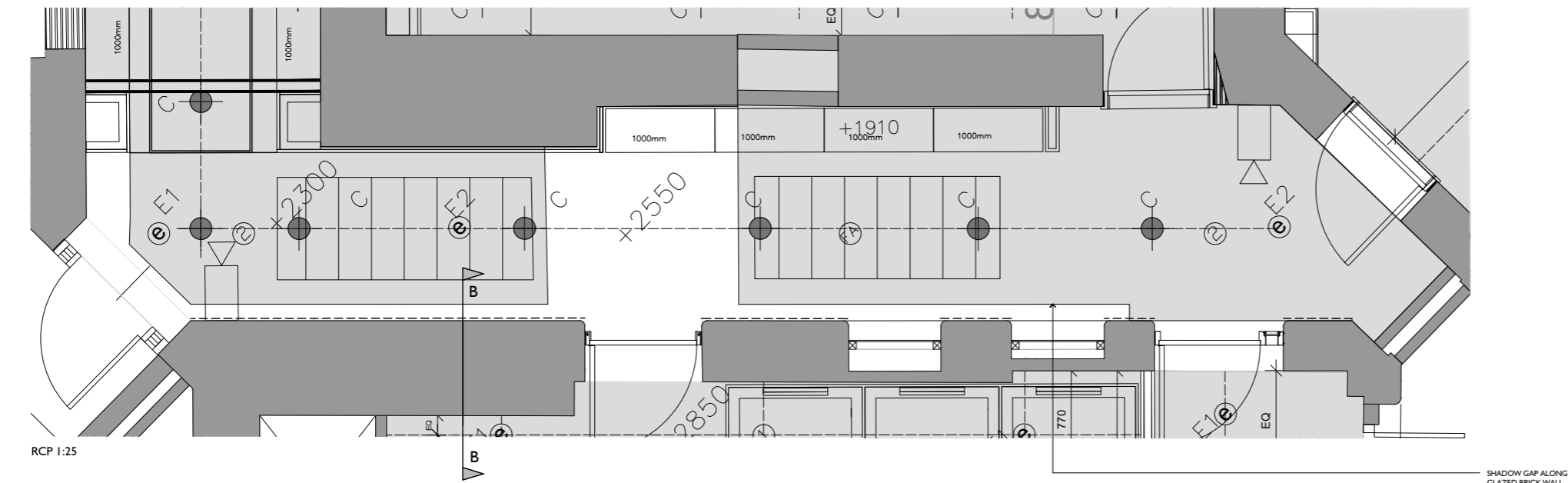
The Foundry  
7 Glenthorne Mews  
London W6 0LJ

client UCL  
project CRUCIFORM STUDENT HUB PROJECT  
drawing RCP-Stair Enclosure/Entrance Lobby Historic Proposa  
stage JKL scale 1:25@A1  
no 1307 DL(72) 132a rev -

T 020 8846 2520  
F 020 8846 2521  
[info@paulmurphyarchitects.co.uk](mailto:info@paulmurphyarchitects.co.uk)  
[www.paulmurphyarchitects.co.uk](http://www.paulmurphyarchitects.co.uk)



PLAN 1:25



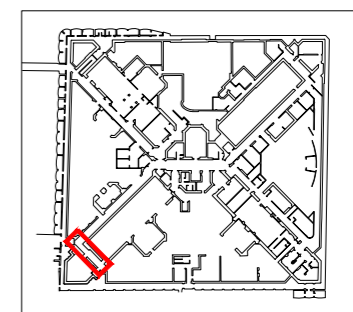
RCP 1:25

--- EXTENT OF EXISTING PLASTER TO BE REMOVED AND BRICKWORK CLEANED AND EXPOSED. EXTENT TO BE CONFIRMED.

NEW PLASTERBOARD INFILL WITH SHADOW GAP TRIM TO DIAMETER.

EXISTING ARCH OPENINGS TO BE RE-USED

SHADOW GAP ALONG GLAZED BRICK WALL



Status	Description	date	drawn by	checked by	Status	Description	date	drawn by	checked by
-	HISTORIC PROPOSAL FOR STAIR ENCLOSURE/EMNTRANCE LOBBY	20.11.2013		NB					

"copyright and ownership of this drawing is vested in paul murphy architects whose prior written consent is required for its use, reproduction or for publication to any third party. all rights reserved by the law of copyright and by international copyright conventions are reserved to paul murphy architects and may be protected by court proceedings for damages and/or injunctions and costs."

do not scale this drawing  
all written dimensions are in millimetres  
any inconsistencies to be reported to the architect immediately

© paul murphy architects 2007

**CAMERON BLACK**  
49 Marylebone High Street  
London  
W1U 5HJ

T: 020 7636 8058  
F: 020 7637 8062  
E: [admin@cameronblack.com](mailto:admin@cameronblack.com)

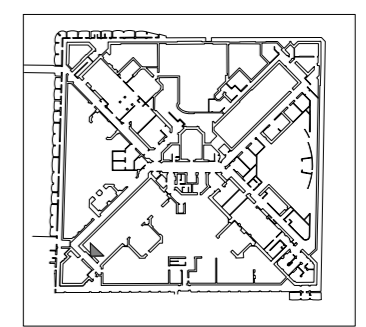
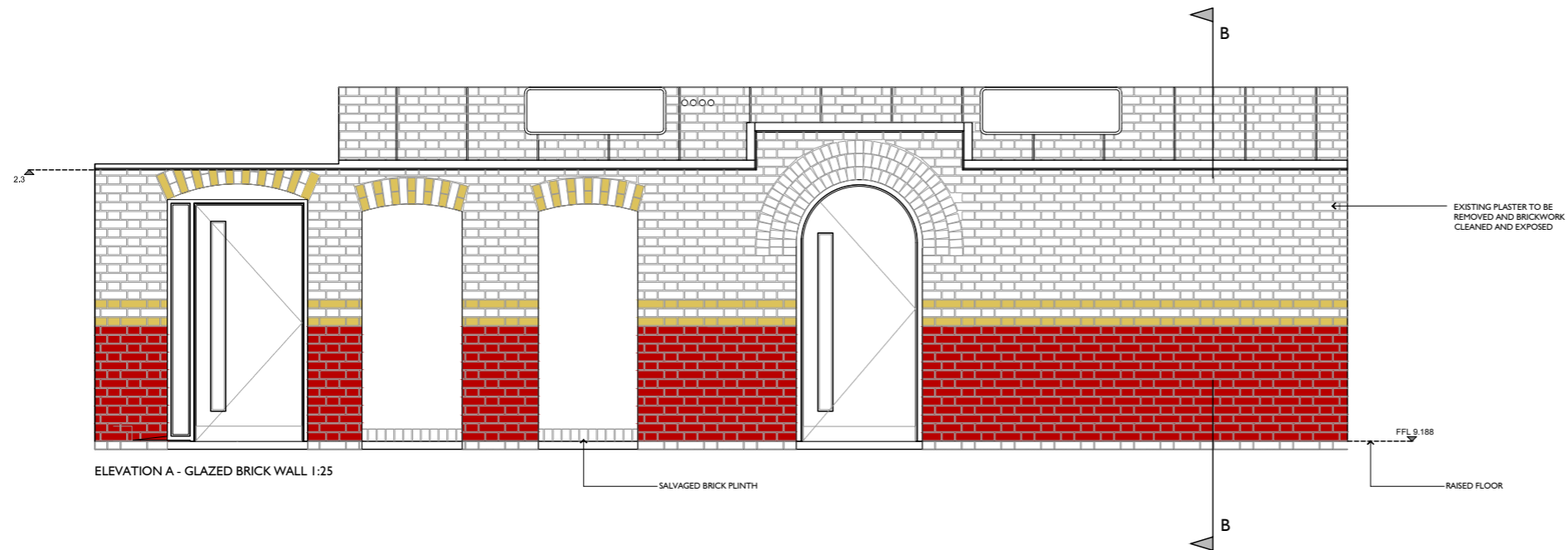
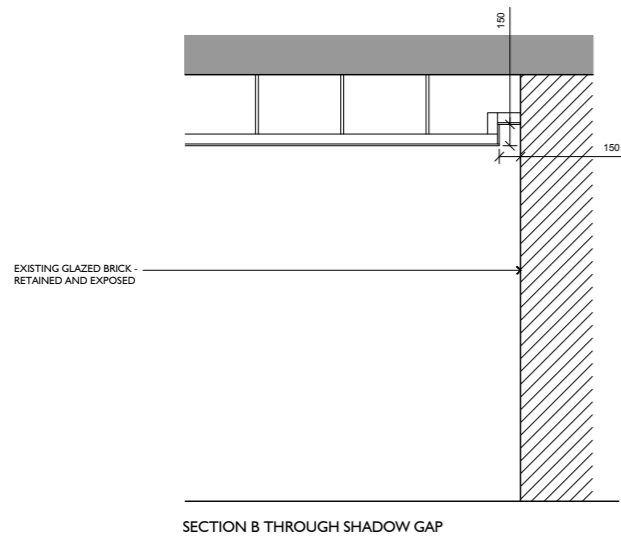
**PaulMurphyArchitects**

The Foundry  
7 Glenthorne Mews  
London W6 0LJ

client UCL  
project CRUCIFORM STUDENT HUB PROJECT  
drawing South East Corridor

T 020 8846 2520  
F 020 8846 2521  
info@paulmurphyarchitects.co.uk  
www.paulmurphyarchitects.co.uk

stage JKL scale 1:25@A1  
no 1307 DL(72) 322a rev -



Status	Description	date	drawn by	checked by	Status	Description	date	drawn by	checked by
-	HISTORIC PROPOSAL FOR ARCHES WITH SHADOW GAP	20.11.2013		NB					

"copyright and ownership of this drawing is vested in paul murphy architects whose prior written consent is required for its use, reproduction or for publication to any third party. all rights reserved by the law of copyright and by international copyright conventions are reserved to paul murphy architects and may be protected by court proceedings for damages and/or injunctions and costs."

do not scale this drawing  
all written dimensions are in millimetres  
any inconsistencies to be reported to the architect immediately

© paul murphy architects 2007

49 Marylebone High Street  
London  
W1U 5HJ

T: 020 7636 8058  
F: 020 7637 8062  
E: [admin@cameronblack.com](mailto:admin@cameronblack.com)

**PaulMurphyArchitects**

The Foundry  
7 Glenthorne Mews  
London W6 0LJ

T 020 8846 2520  
F 020 8846 2521

[info@paulmurphyarchitects.co.uk](mailto:info@paulmurphyarchitects.co.uk)  
[www.paulmurphyarchitects.co.uk](http://www.paulmurphyarchitects.co.uk)

client UCL  
project CRUCIFORM STUDENT HUB PROJECT  
drawing South East Corridor  
stage JKL scale 1:25@A1  
no 1307 DL(72) 322b rev -



Status	Description
-	APPENDIX PHOTOS A-D

date	drawn by	checked by
25/11/2013	CB	NB

"copyright and ownership of this drawing is vested in paul murphy architects whose prior written consent is required for its use, reproduction or for publication to any third party.  
 all rights reserved by the law of copyright and by international copyright conventions are reserved to paul murphy architects and may be protected by court proceedings for damages and/or injunctions and costs."  
 do not scale this drawing  
 all written dimensions are in millimetres  
 any inconsistencies to be reported to the architect immediately  
 © paul murphy architects 2007

## PaulMurphyArchitects

The Foundry  
 7 Glenthorne Mews  
 London W6 0LJ

T 020 8846 2520  
 F 020 8846 2521

info@paulmurphyarchitects.co.uk  
 www.paulmurphyarchitects.co.uk

client	UCL
project	CRUCIFORM STUDENT HUB PROJECT
drawing	APPENDIX PHOTOS A-D
stage	JKL
no	1307 SK-100
scale	N/A
rev	-



Status Description  
- APPENDIX PHOTOS E-H

date drawn by checked by  
25/11/2013 CB NB

"copyright and ownership of this drawing is vested in paul murphy architects whose prior written consent is required for its use, reproduction or for publication to any third party. all rights reserved by the law of copyright and by international copyright conventions are reserved to paul murphy architects and may be protected by court proceedings for damages and/or injunctions and costs."

do not scale this drawing  
all written dimensions are in millimetres  
any inconsistencies to be reported to the architect immediately

© paul murphy architects 2007

## PaulMurphyArchitects

The Foundry  
7 Glenthorne Mews  
London W6 0LJ

T 020 8846 2520  
F 020 8846 2521

info@paulmurphyarchitects.co.uk  
www.paulmurphyarchitects.co.uk

client UCL  
project CRUCIFORM STUDENT HUB PROJECT  
drawing APPENDIX PHOTOS E-H  
stage JKL scale N/A  
no 1307 SK-101 rev -



la.



lb.



l.



k.



Status	Description
-	APPENDIX PHOTOS I-K

date	drawn by	checked by
25/11/2013	CB	NB

"copyright and ownership of this drawing is vested in paul murphy architects whose prior written consent is required for its use, reproduction or for publication to any third party.  
all rights reserved by the law of copyright and by international copyright conventions are reserved to paul murphy architects and may be protected by court proceedings for damages and/or injunctions and costs."

do not scale this drawing  
all written dimensions are in millimetres  
any inconsistencies to be reported to the architect immediately

© paul murphy architects 2007

## PaulMurphyArchitects

The Foundry  
7 Glenthorne Mews  
London W6 0LJ

T 020 8846 2520  
F 020 8846 2521

info@paulmurphyarchitects.co.uk  
www.paulmurphyarchitects.co.uk

client	UCL
project	CRUCIFORM STUDENT HUB PROJECT
drawing	APPENDIX PHOTOS I-K
stage	JKL
no	1307 SK-102
scale	N/A
rev	-

L.



M.



N.



O.



Status	Description
-	APPENDIX PHOTOS L-O

date	drawn by	checked by
25/11/2013	CB	NB

"copyright and ownership of this drawing is vested in paul murphy architects whose prior written consent is required for its use, reproduction or for publication to any third party. all rights reserved by the law of copyright and by international copyright conventions are reserved to paul murphy architects and may be protected by court proceedings for damages and/or injunctions and costs."

do not scale this drawing  
all written dimensions are in millimetres  
any inconsistencies to be reported to the architect immediately

© paul murphy architects 2007

## PaulMurphyArchitects

The Foundry  
7 Glenthorne Mews  
London W6 0LJ

T 020 8846 2520  
F 020 8846 2521

info@paulmurphyarchitects.co.uk  
www.paulmurphyarchitects.co.uk

client UCL  
project CRUCIFORM STUDENT HUB PROJECT  
drawing APPENDIX PHOTOS L-O  
stage JKL scale N/A  
no 1307 SK-103 rev -

1.



2.



3.



Status	Description	date	drawn by	checked by
-	APPENDIX PHOTOS 1-3	25/11/2013	CB	NB

"copyright and ownership of this drawing is vested in paul murphy architects whose prior written consent is required for its use, reproduction or for publication to any third party.  
all rights reserved by the law of copyright and by international copyright conventions are reserved to paul murphy architects and may be protected by court proceedings for damages and/or injunctions and costs."

do not scale this drawing  
all written dimensions are in millimetres  
any inconsistencies to be reported to the architect immediately

© paul murphy architects 2007

## PaulMurphyArchitects

The Foundry  
7 Glenthorne Mews  
London W6 0LJ

T 020 8846 2520  
F 020 8846 2521

info@paulmurphyarchitects.co.uk  
www.paulmurphyarchitects.co.uk

client UCL  
project CRUCIFORM STUDENT HUB PROJECT  
drawing APPENDIX PHOTOS 1-3  
stage JKL scale N/A  
no 1307 SK-104 rev -

4a.



4b.



5a.



5b.



Status	Description	date	drawn by	checked by
-	APPENDIX PHOTOS 4-5	25/11/2013	CB	NB

"copyright and ownership of this drawing is vested in paul murphy architects whose prior written consent is required for its use, reproduction or for publication to any third party.  
all rights reserved by the law of copyright and by international copyright conventions are reserved to paul murphy architects and may be protected by court proceedings for damages and/or injunctions and costs."

do not scale this drawing  
all written dimensions are in millimetres  
any inconsistencies to be reported to the architect immediately

© paul murphy architects 2007

## PaulMurphyArchitects

The Foundry  
7 Glenthorne Mews  
London W6 0LJ

T 020 8846 2520  
F 020 8846 2521

info@paulmurphyarchitects.co.uk  
www.paulmurphyarchitects.co.uk

client UCL  
project CRUCIFORM STUDENT HUB PROJECT  
drawing APPENDIX PHOTOS 4-5  
stage JKL scale N/A  
no 1307 SK-105 rev -



Status	Description
-	APPENDIX PHOTOS 6-9

date 25/11/2013  
 drawn by CB  
 checked by NB

"copyright and ownership of this drawing is vested in paul murphy architects whose prior written consent is required for its use, reproduction or for publication to any third party.

all rights reserved by the law of copyright and by international copyright conventions are reserved to paul murphy architects and may be protected by court proceedings for damages and/or injunctions and costs."

do not scale this drawing  
 all written dimensions are in millimetres  
 any inconsistencies to be reported to the architect immediately

© paul murphy architects 2007

## PaulMurphyArchitects

The Foundry  
 7 Glenthorne Mews  
 London W6 0LJ

T 020 8846 2520  
 F 020 8846 2521

info@paulmurphyarchitects.co.uk  
 www.paulmurphyarchitects.co.uk

client UCL  
 project CRUCIFORM STUDENT HUB PROJECT  
 drawing APPENDIX PHOTOS 6-9  
 stage JKL scale N/A  
 no 1307 SK-106 rev -

10.



11.



12.



13.



Status	Description
-	APPENDIX PHOTOS 10-13

date	drawn by	checked by
25/11/2013	CB	NB

"copyright and ownership of this drawing is vested in paul murphy architects whose prior written consent is required for its use, reproduction or for publication to any third party.  
all rights reserved by the law of copyright and by international copyright conventions are reserved to paul murphy architects and may be protected by court proceedings for damages and/or injunctions and costs."

do not scale this drawing  
all written dimensions are in millimetres  
any inconsistencies to be reported to the architect immediately

© paul murphy architects 2007

## PaulMurphyArchitects

The Foundry  
7 Glenthorne Mews  
London W6 0LJ

T 020 8846 2520  
F 020 8846 2521

info@paulmurphyarchitects.co.uk  
www.paulmurphyarchitects.co.uk

client UCL  
project CRUCIFORM STUDENT HUB PROJECT  
drawing APPENDIX PHOTOS 10-13  
stage JKL scale N/A  
no 1307 SK-107 rev -

14.



15.



16.



17.



Status	Description
-	APPENDIX PHOTOS 14-17

date	drawn by	checked by
25/11/2013	CB	NB

"copyright and ownership of this drawing is vested in paul murphy architects whose prior written consent is required for its use, reproduction or for publication to any third party.  
all rights reserved by the law of copyright and by international copyright conventions are reserved to paul murphy architects and may be protected by court proceedings for damages and/or injunctions and costs."

do not scale this drawing  
all written dimensions are in millimetres  
any inconsistencies to be reported to the architect immediately

© paul murphy architects 2007

## PaulMurphyArchitects

The Foundry  
7 Glenthorne Mews  
London W6 0LJ

T 020 8846 2520  
F 020 8846 2521

info@paulmurphyarchitects.co.uk  
www.paulmurphyarchitects.co.uk

client	UCL
project	CRUCIFORM STUDENT HUB PROJECT
drawing	APPENDIX PHOTOS 14-17
stage	JKL
no	1307 SK-108
scale	N/A
rev	-