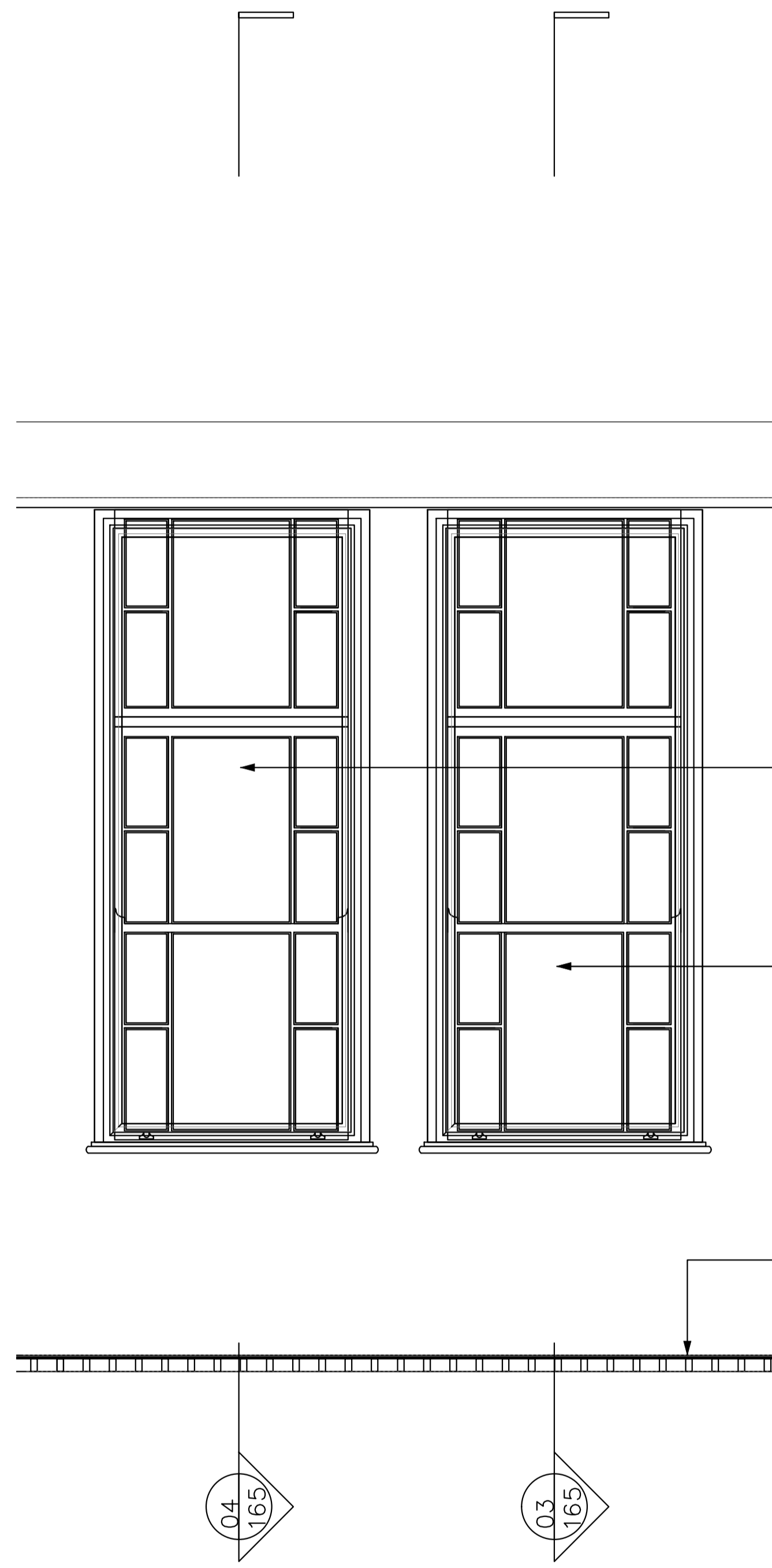
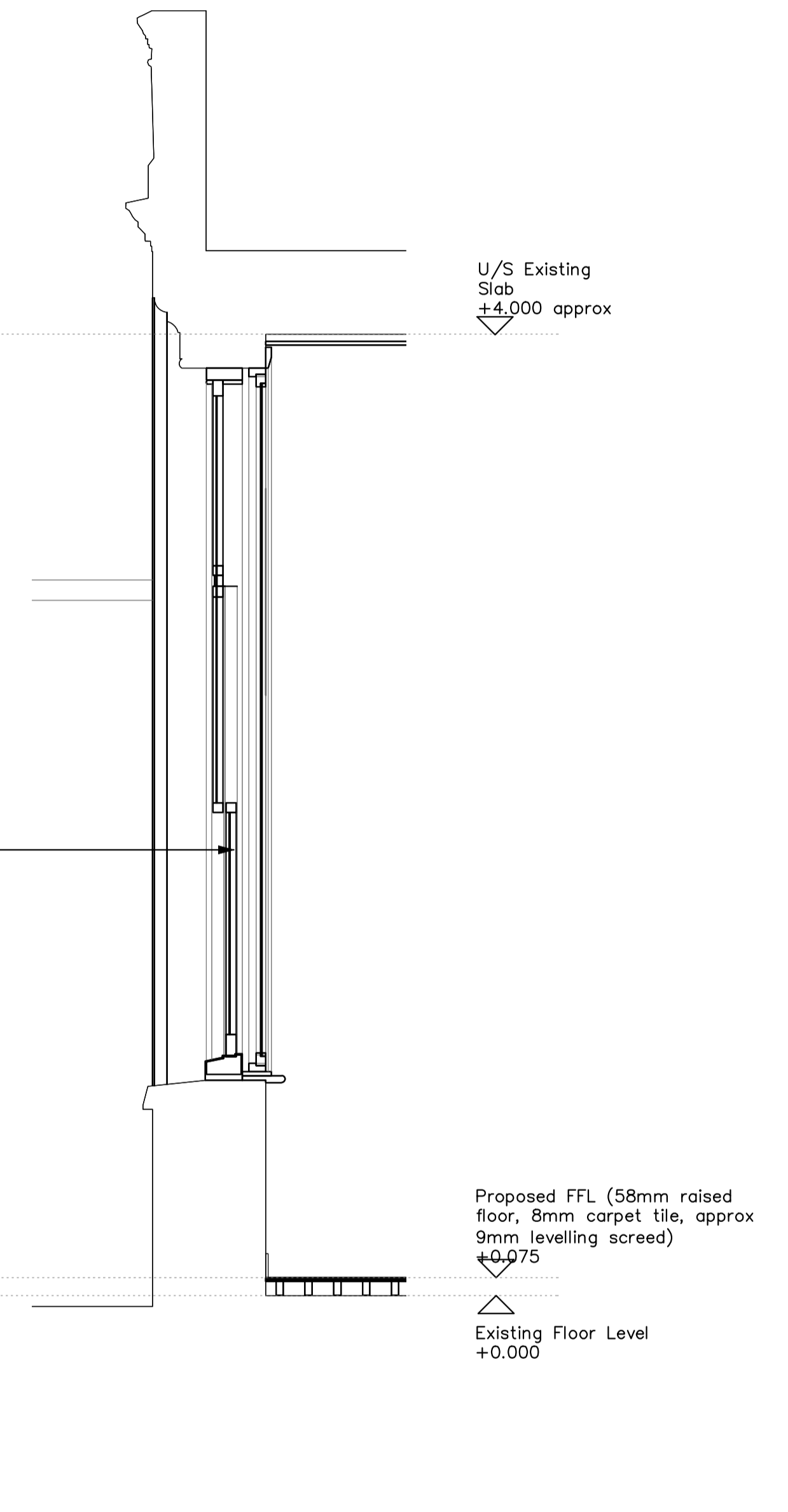


01 Proposed Windows Typical External Elevation
1:20 @ A1



02 Proposed Windows Typical Internal Elevation Detail
1:20 @ A1



03 Proposed Typical Window Section (to match existing)
1:20 @ A1

Existing white painted timber sash window

New sash window to match existing inserted into existing bricked-up window opening. (L10/260)

Existing white painted timber sash window with aluminium framed secondary glazing (painted white) and venetian blinds, within cavity (metallic silver).

New white painted timber window with secondary glazing and interstitial blind to match existing, inserted into existing bricked-up window opening. (L10/260)

New raised floor with carpet tile on levelling screed

U/S Existing Slab
+4.000 approx

Proposed FFL (58mm raised floor, 8mm carpet tile, approx 9mm levelling screed)
+0.075

Existing Floor Level
+0.000

Status	Description	date	drawn by	checked by	Status	Description	date	drawn by	checked by
CONSTRUCTION		26/06/2013		NB					

"copyright and ownership of this drawing is vested in paul murphy architects whose prior written consent is required for its use, reproduction or for publication to any third party. all rights reserved by the law of copyright and by international copyright conventions are reserved to paul murphy architects and may be protected by court proceedings for damages and/or injunctions and costs."

do not scale this drawing
all written dimensions are in millimetres
any inconsistencies to be reported to the architect immediately

CAMERON BLACK
49 Marylebone High Street
London
W1U 5HU
T. 020 7636 8058
F. 020 7637 8062
E. admin@cameronblack.com

PaulMurphyArchitects

The Foundry
7 Glenthorne Mews
London W6 0LJ
client UCL
project CRUCIFORM STUDENT HUB PROJECT
drawing Proposed Windows Typical Elevation Section
stage JKL scale 1:20@A1
no 1307 DL(31) 247 rev -