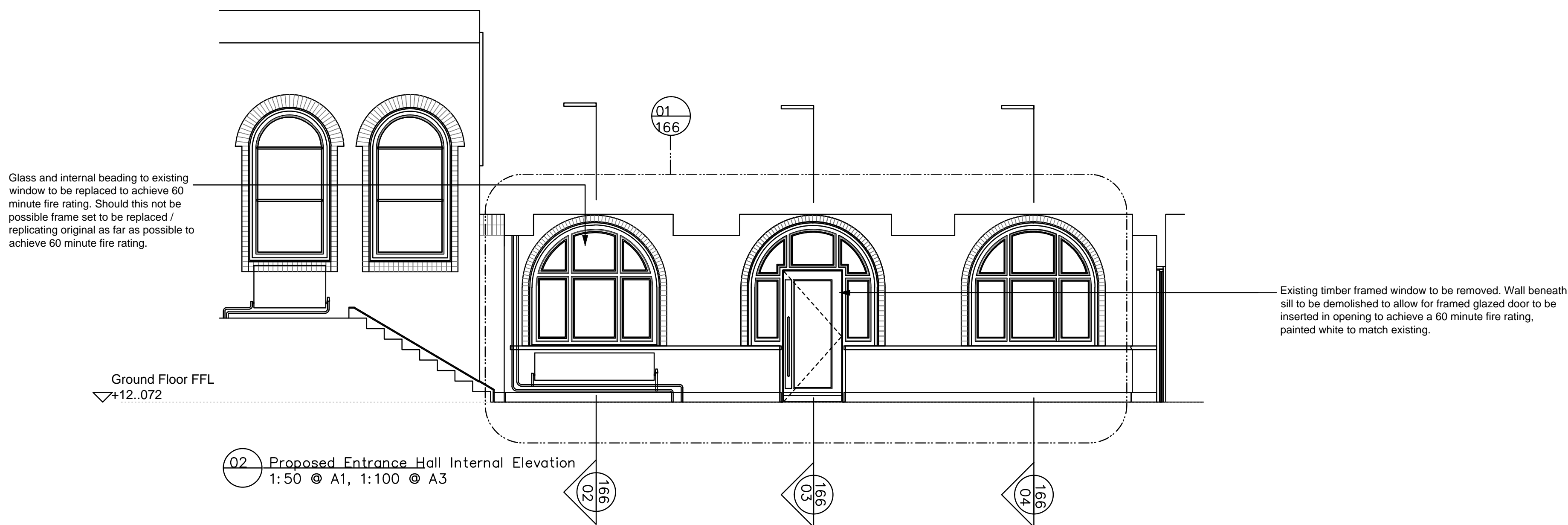
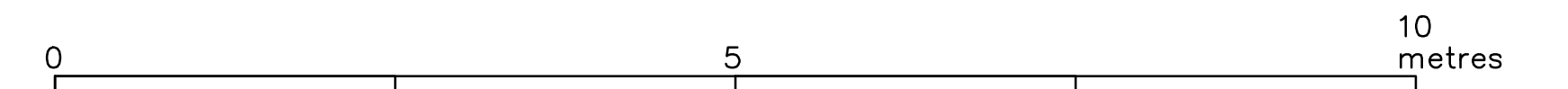


01 Proposed Entrance Hall External Elevation
1:50 @ A1, 1:100 @ A3



02 Proposed Entrance Hall Internal Elevation
1:50 @ A1, 1:100 @ A3



Status	Description	date	drawn by	checked by	Status	Description	date	drawn by	checked by
	CONSTRUCTION	26/06/2013		NB					
B	FOR INFORMATION	25/11/2013		NB					

"copyright and ownership of this drawing is vested in paul murphy architects whose prior written consent is required for its use, reproduction or for publication to any third party. all rights reserved by the law of copyright and by international copyright conventions are reserved to paul murphy architects and may be protected by court proceedings for damages and/or injunctions and costs."

do not scale this drawing all written dimensions are in millimetres any inconsistencies to be reported to the architect immediately

© paul murphy architects 2007

CAMERON BLACK
49 Marylebone High Street
London
W1U 5HU

T. 020 7636 8058
F. 020 7637 8062
E. admin@cameronblack.com

PaulMurphyArchitects

The Foundry
7 Glenthorne Mews
London W6 0LJ

T 020 8846 2520
F 020 8846 2521

info@paulmurphyarchitects.co.uk
www.paulmurphyarchitects.co.uk

client UCL
project CRUCIFORM STUDENT HUB PROJECT

drawing Proposed Entrance Hall Elevations

stage JKL scale 1:50@A1

no 1307 DL(2-) 153 rev A