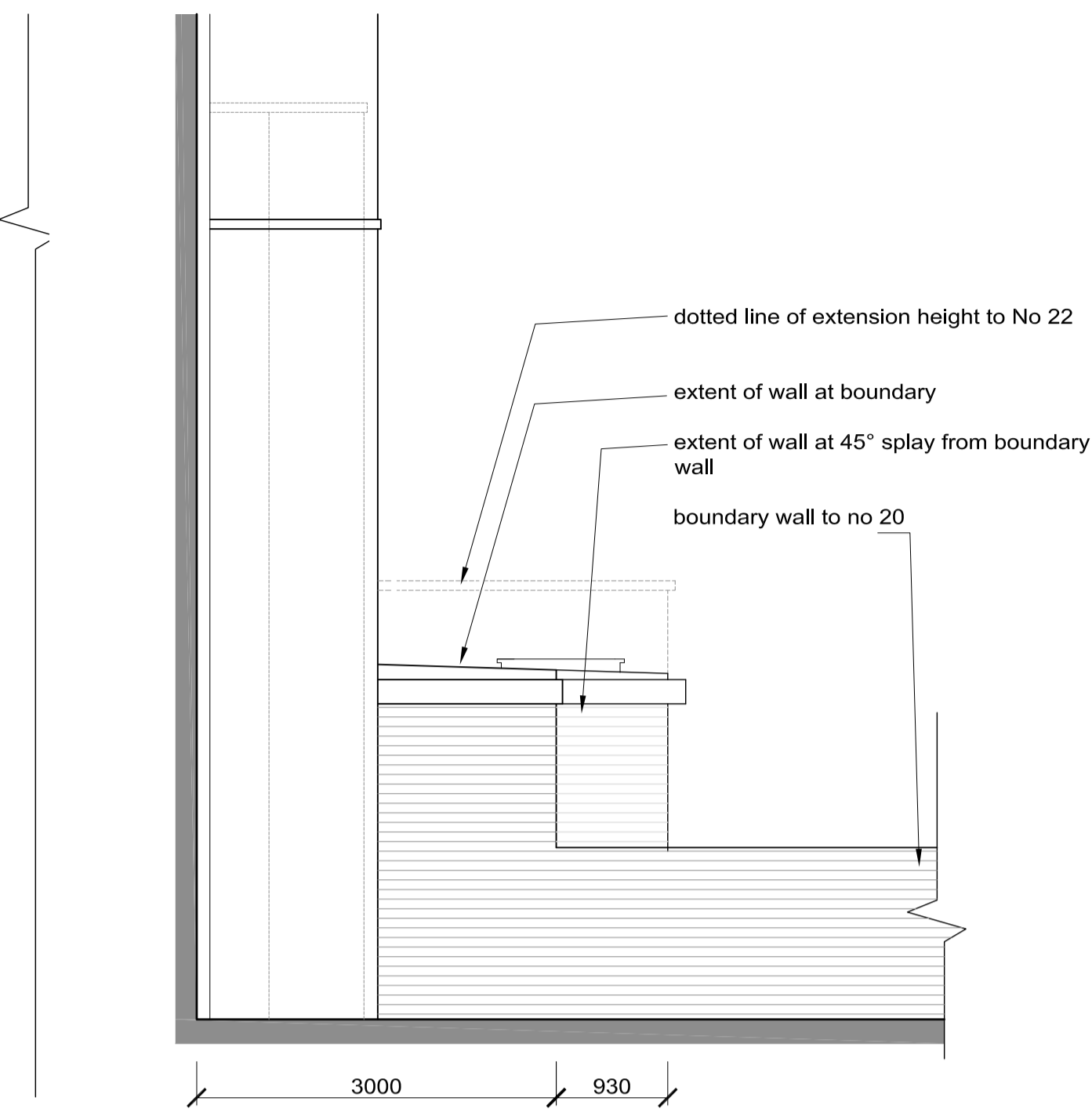


as approved
WEST ELEVATION (to No 20)



as proposed minor amendment

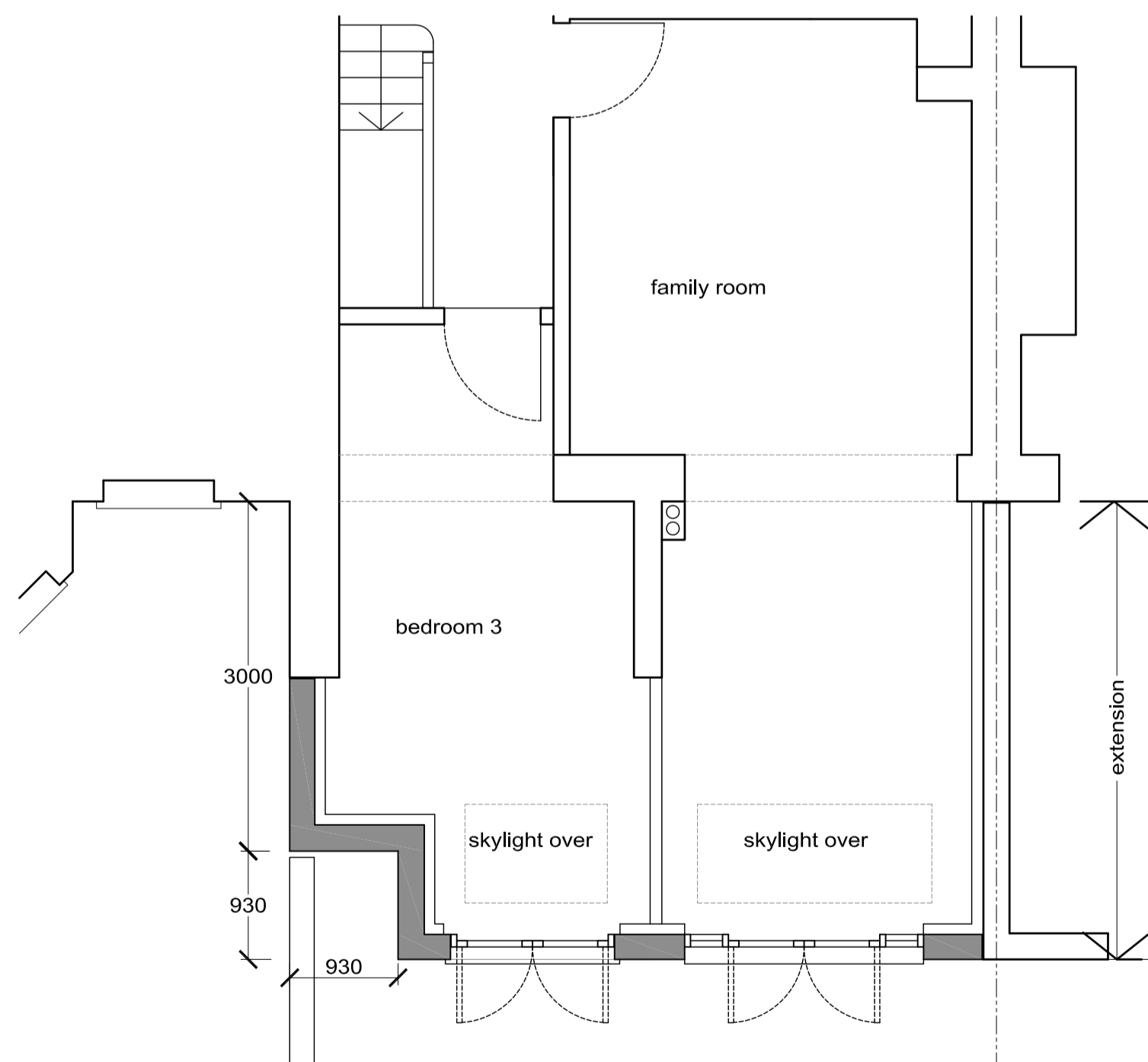


as approved



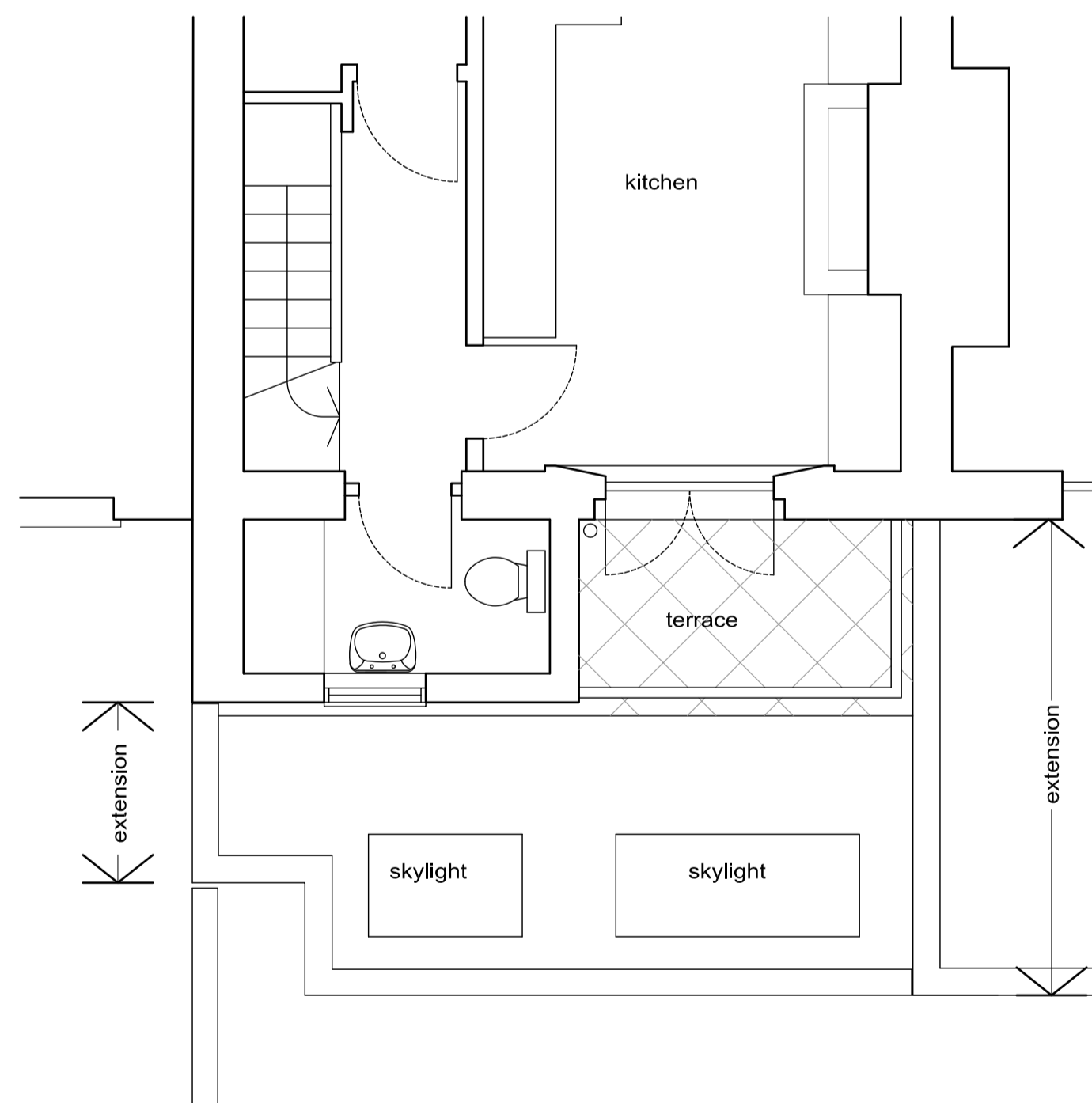
as proposed minor amendment

SOUTH ELEVATION

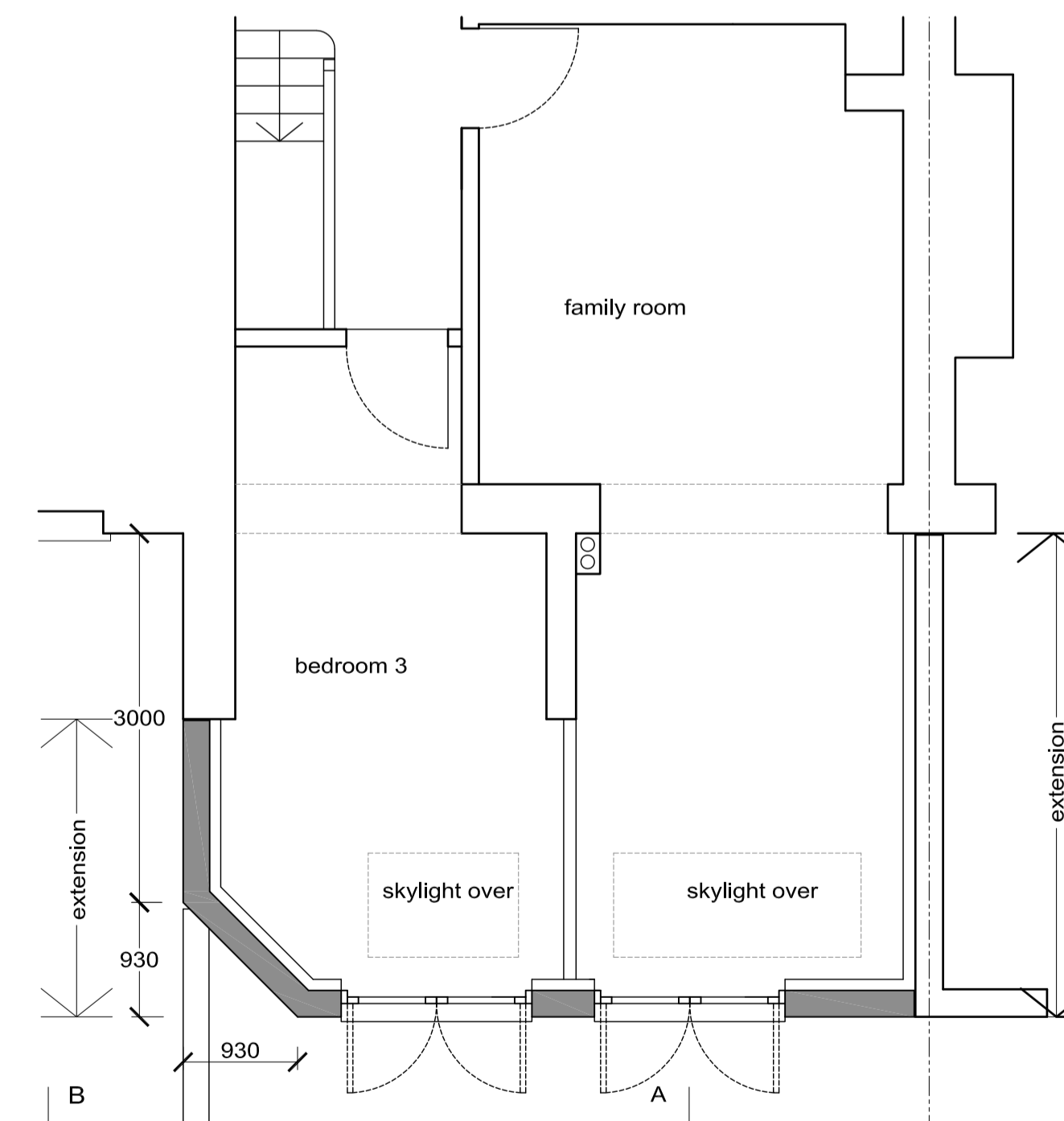


LOWER GROUND FLOOR PLAN

AS APPROVED

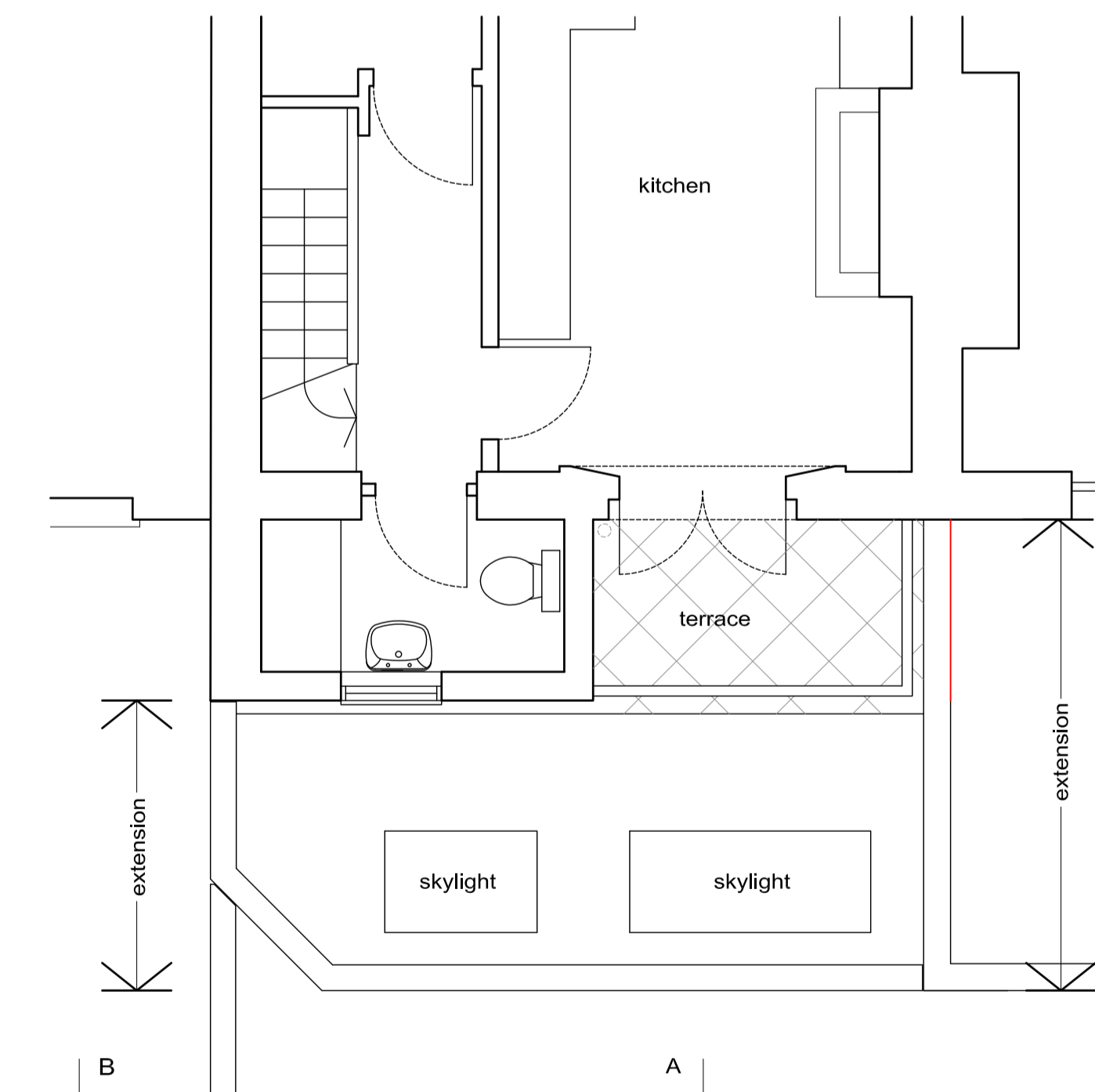


RAISED GROUND FLOOR PLAN



LOWER GROUND FLOOR PLAN

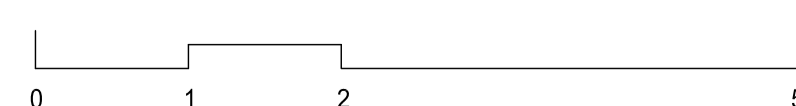
AS PROPOSED AMENDMENT



RAISED GROUND FLOOR PLAN

REVISIONS

scale in metres



planning application

gordon curtis architects

MOOR COURT GLENMORE ROAD LONDON NW3 4DE

tel & fax 020 7586 6065

project: 21a Steele Road London NW3

drawing: rear extension detailed plans & elevations

mail@gordoncurtis.com

date: Nov 2013

scale: 1:50@A1, 1:100@A3

dwg no: 1307 05