

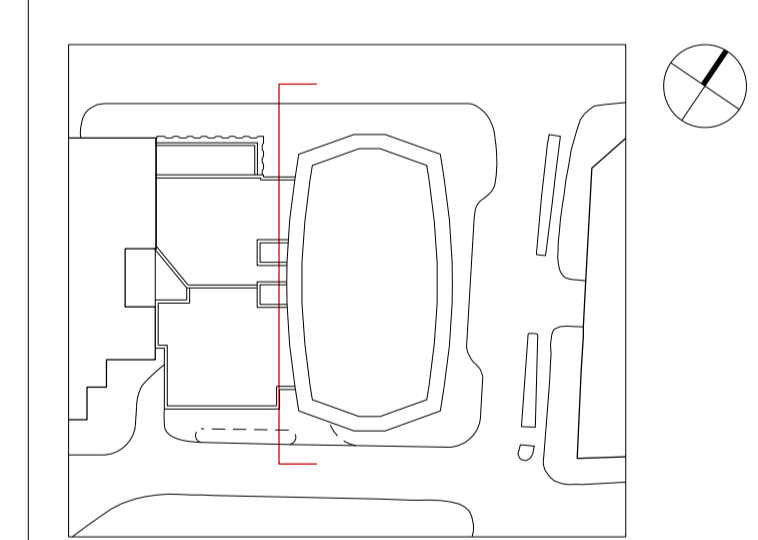
Notes

It should be noted that this drawing has been interpreted from survey information supplied by Plowman Craven.

FOR UPDATED BACKGROUND INFORMATION REFER TO GA ELEVATIONS

To be read in conjunction with 1012(SP)001, 002, 004, 007, 013; (FS) Series; (20) Series for updated backgrounds and ARUP Facades specification.

- Cladding Type 1
Refer to ARUP Facades specification
- Cladding Type 2
Refer to ARUP Facades specification
- Cladding Type 3
Refer to ARUP Facades specification
- Cladding Type 4
Refer to ARUP Facades specification
- Cladding Type 5
Refer to ARUP Facades specification
- Cladding Type 6 (Louvre)
Refer to ARUP Facades specification
- Louvre Panel System
Refer to L10/650
- Brickwork
Refer to F10/110
- Rainscreen
Refer to H31/127
- External Door/Gate
Refer to (31) Series.
- Existing concrete panel - To be removed and replaced by new concrete panel (to match existing).
- Existing Concrete Panel - To be cut and retained.
- Halo louvre panels



Bennetts Associates Architects

1 Rawstorne Place London EC1V 7NL
 T +44 (0)20 7520 3300 F +44 (0)20 7520 3333
 E mail@bennettsassociates.com
 For Bennetts Associates' electronic information issue disclaimer -
 www.bennettsassociates.com/informationanddisclaimer/

Project Project No. 1012

One Mabledon Place
 Stanhope Plc

Drawing Title
 Proposed
 Building Section
 Longitudinal Section DD
 Cladding Types

Drawing Number Revision
 1012_F21_S03 A

Scale @ A3 Scale @A1 Revision Date
 1 : 200 1 : 100 130913