

PROPOSED BLOCK E GROUND FLOOR PLAN

As Issued / Revision / Drawn/Checked by

CLIENT  
BALLYMORE & NETWORK RAIL

PROJECT  
WEST HAMPSTEAD SQUARE,  
WEST HAMPSTEAD

TITLE  
PROPOSED BLOCK E GROUND  
FLOOR PLAN

DRAWING STATUS  
PLANNING

DRAWN MDB CHECKED IL

SCALE 1:100@A1

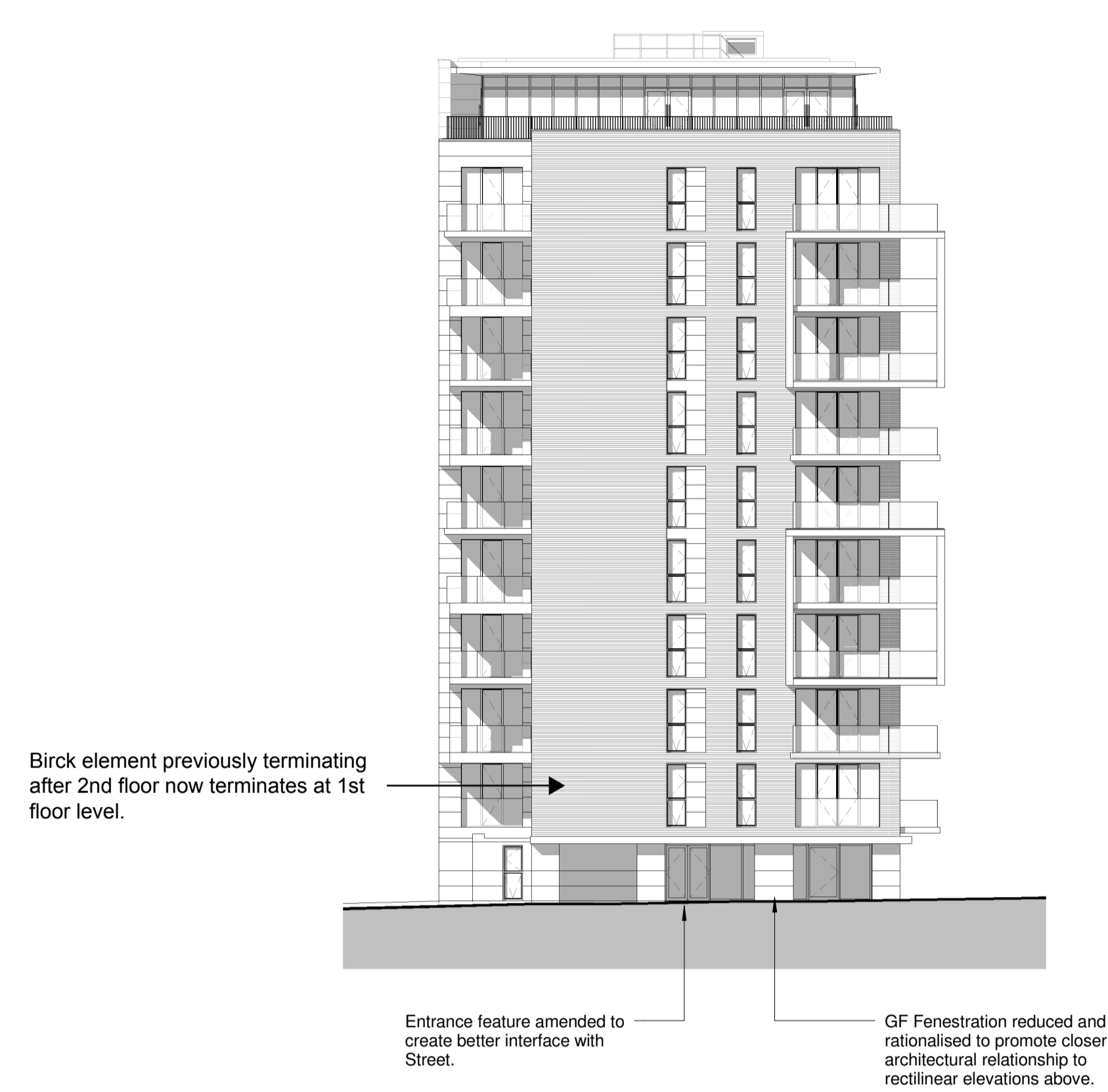
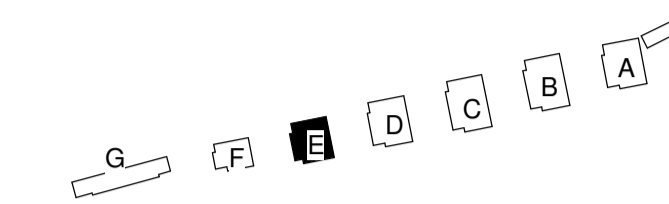
DATE SEPTEMBER 2013

**WCEC architects**  
Chesterfield London Livingston  
01246 260261 020 3388 0019 08700 555915  
email@wcec.co.uk www.wcec.co.uk

JOB NO.	DRAWING NO.	REV
12-316	PL-30	

This drawing is copyright and shall not be reproduced or used for any other purpose without the written permission of the Architects.  
 It is the contractors responsibility to ensure full compliance with the Building Regulations.  
 Do not scale from this drawing, use figured dimensions only.  
 It is the contractors responsibility to check and verify all dimensions on site.  
 Any discrepancies to be reported immediately.  
 IF IN DOUBT ASK.  
 Materials not in conformity with relevant British or European Standards/Codes of practice or materials known to be deleterious to health & safety must not be used or specified on this project.  
 Materials known to contain asbestos contaminated materials (ACM's) in the manufacture or installation process have not been specified and must not be used on this project.

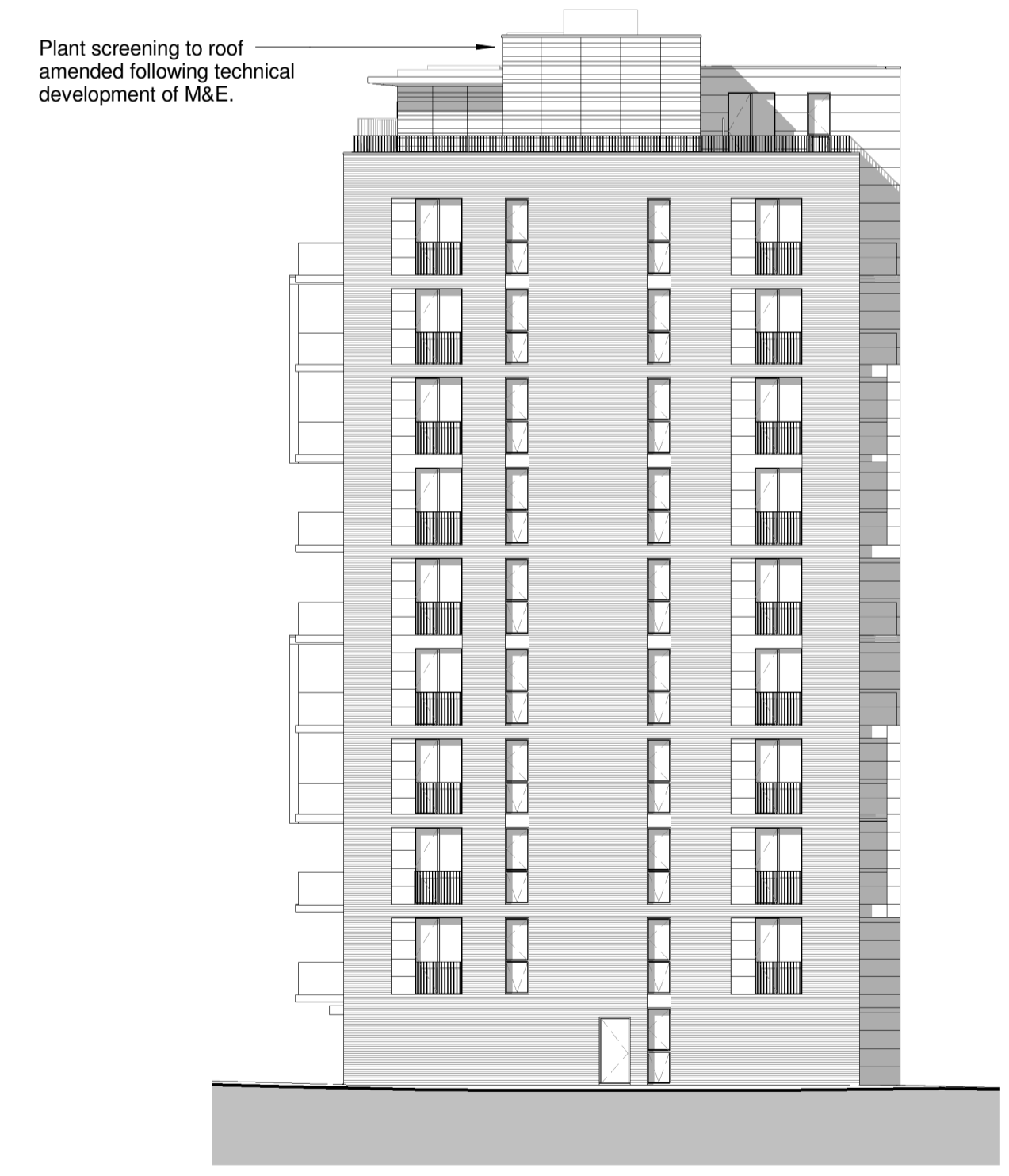
KEY



SOUTH ELEVATION



EAST ELEVATION



NORTH ELEVATION



WEST ELEVATION

General Note  
 Ground to First floor height reduced in technical design development to follow topography - this can be seen most clearly when comparing Blocks D and E west elevations (approved and proposed)

No	Date	Description	By	Ckd
C	28.10.13	Section 73 amendments noted.	IMDB	IL
B	25.10.13	Elevation revised as per revised ground floor plan	SS	IL
A	23.05.13	Amended in line with comments received via email on the 13.05.2013 @ 1552	AKS	JA



PROJECT  
 West Hampstead Square

TITLE  
 Block E Elevations

DRAWING STATUS

For Information

DRAWN	SS	CHECKED	Checker

SCALE As indicated @ A1

DATE 05/14/13

**wcec** architects  
 31-35 Kirby Street, Farringdon  
 London, EC1N 8TE  
 t:020 3388 0019, e: email@wcec.co.uk, www.wcec.co.uk

JOB NO.	DRAWING NO.	REV
12-316	PL-14	C