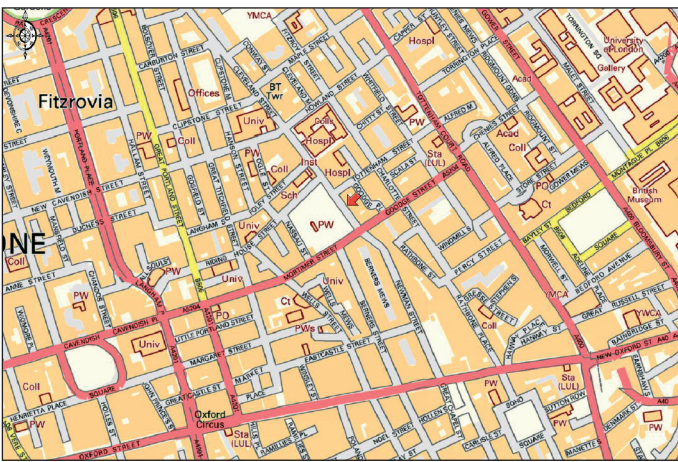




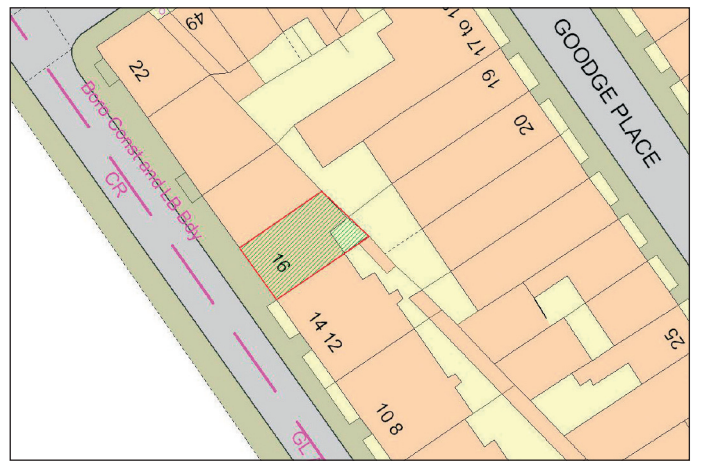
- > substantial freehold five floor mid terrace building of approximately 298m² (3,207 sq ft)
- > potential to convert into several self contained flats of a substantial family dwelling subject to planning
- > full vacant possession

by order of Camden and Islington NHS Foundation Trust

16A Cleveland Street, Marylebone, W1T 4HX



©Crown Copyright. Licence Number: ES 100020372



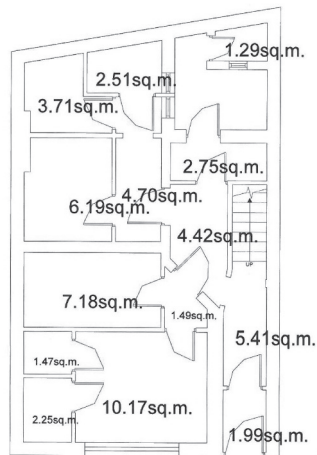
©Crown Copyright. Licence Number: ES 100020372

location:

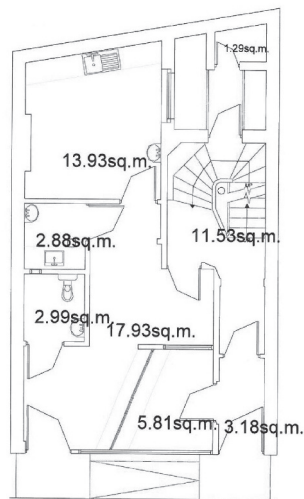
The property is situated on the east side of Cleveland Street, north of its junction with Mortimer Street and south of Tottenham Street. Public transport links include Goodge Street Underground Station (Northern Line), Oxford Circus Underground Station (Central Line, Bakerloo Line, Victoria Line) together with a network of local bus services. The property is well situated for an extensive range of shops, bars and restaurants with further amenities being found on Oxford Street to the south. Recreational pursuits can be found at Regents Park to the north and Hyde Park to the west.

description:

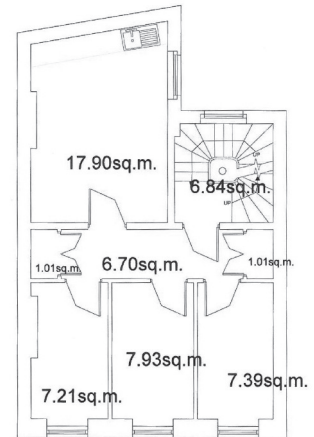
Substantial freehold five floor mid terrace building previously utilised as an NHS Alcohol Services drop in Centre with planning potential to convert into several self contained flats or a substantial family dwelling subject to planning permission.



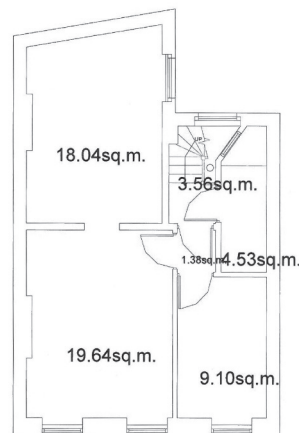
Basement



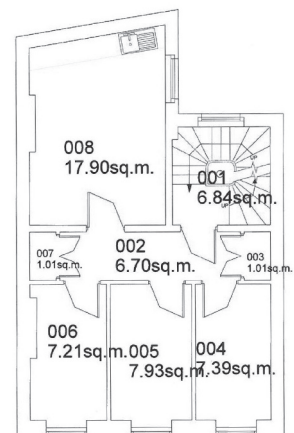
Ground floor



First floor



Third floor



Second floor

accommodation:

Third floor: Three rooms
 Second floor: Four rooms,
 First floor: Four rooms
 Ground floor: Two rooms, shower room/WC, cloakroom/WC
 Lower ground floor: Three rooms, 2 cloakrooms/WCs
 Outside: Rear courtyard.

planning:

The property may be suitable for conversion into several self contained flats or a substantial family dwelling subject to the usual and necessary planning permissions and consents – prospective purchasers must rely upon their own enquiries in this respect.

EPC rating: C

to view:

Strictly by arrangement with the auctioneers.

local authority:

London Borough of Camden, tel: 020 7974 4444