

Revisions



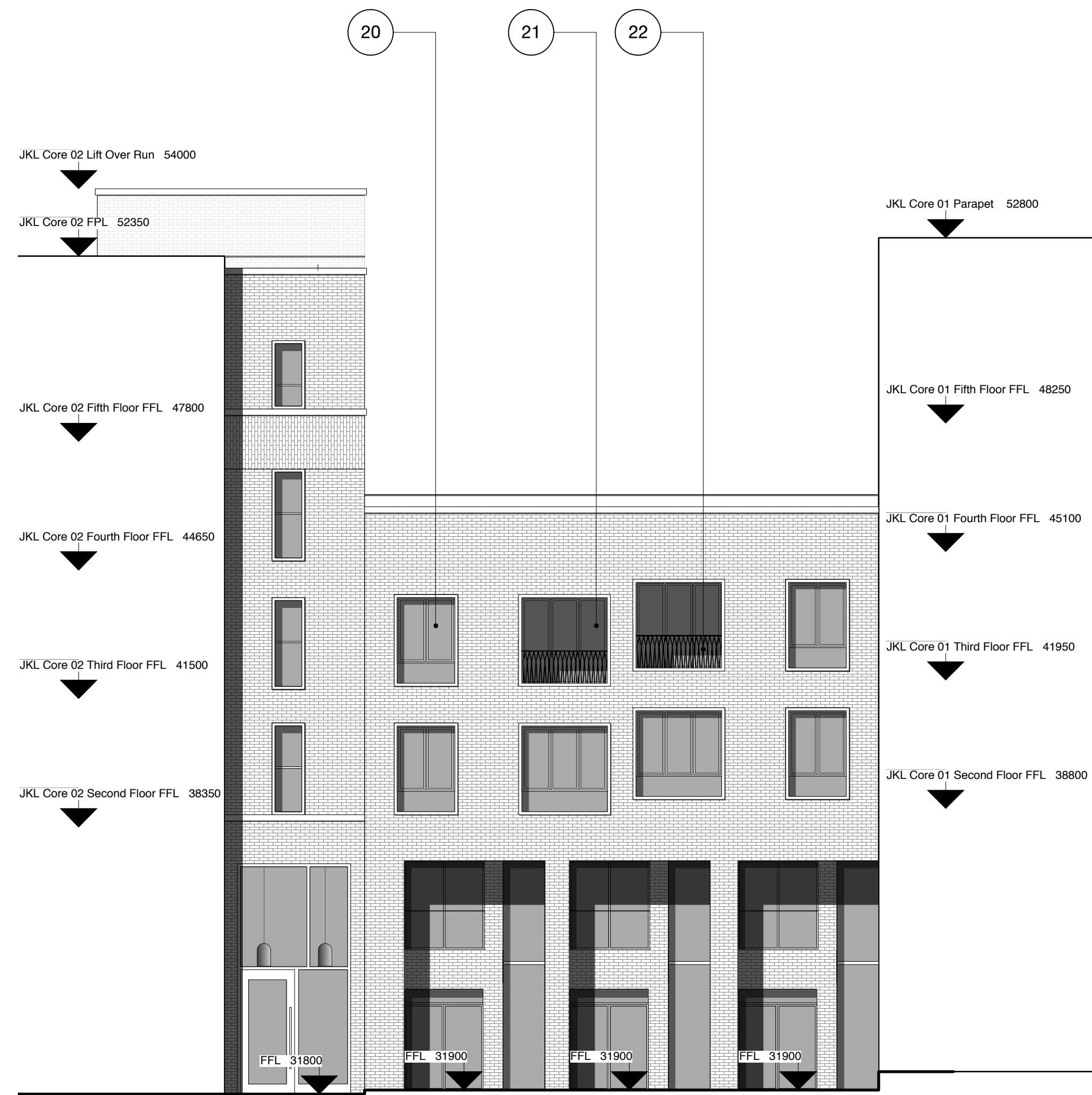
01 Internal Courtyard Elevation
Scale 1:100 @ A0



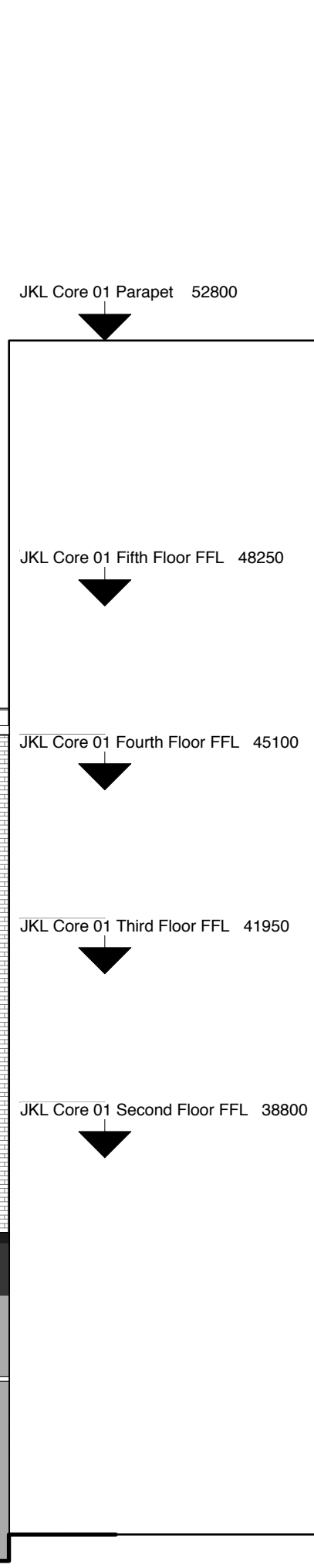
02 Internal Courtyard Elevation
Scale 1:100 @ A0



03 Internal Courtyard Elevation
Scale 1:100 @ A0



04 Internal Courtyard Elevation
Scale 1:100 @ A0

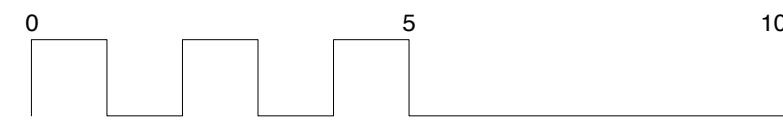
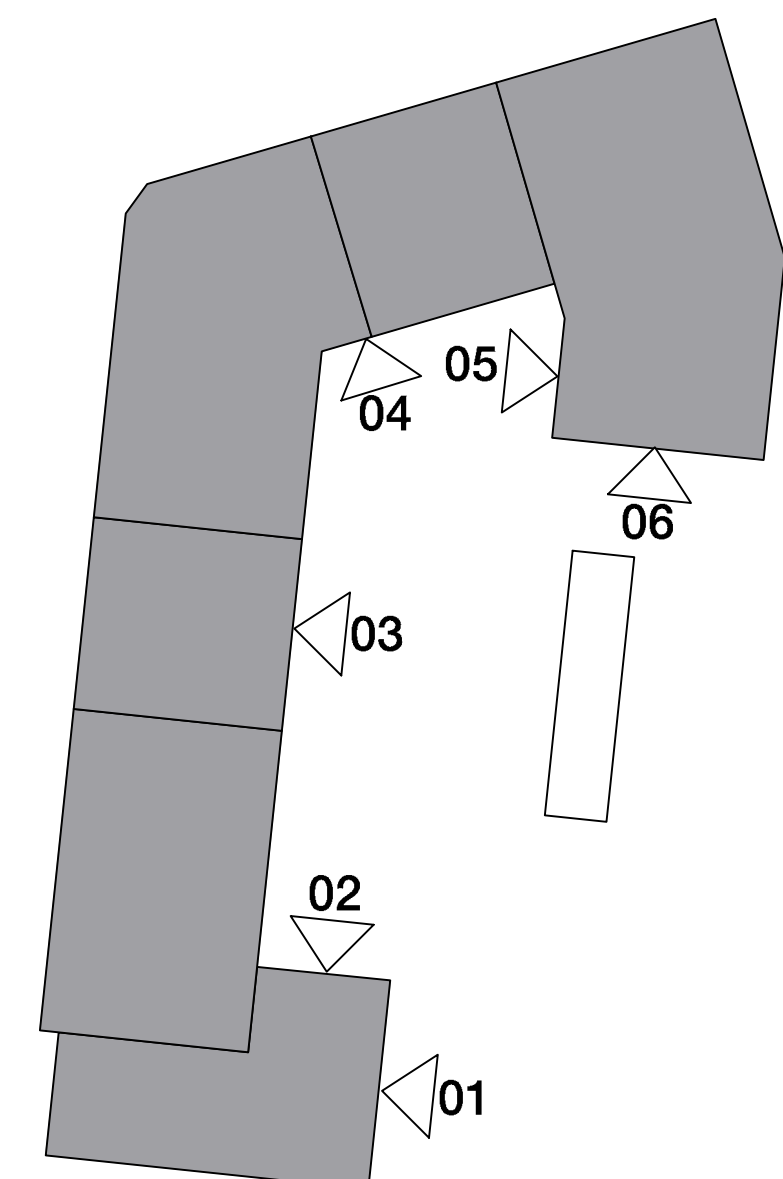


05 Internal Courtyard Elevation
Scale 1:100 @ A0



06 Internal Courtyard Elevation
Scale 1:100 @ A0

Plot JKL – Key Plan
1:500 @ A0



Plot JKL Material Specification

- Predominant brick used from ground to fifth floor of building - textured clinker brick, engobe/coal fired. Bond - random. Colour - brown/purple variegated brick with a degree of patterning within each brick. Mortar - flush pointed, colour to be determined after review of sample boards
- Communal entrances expressed with a sawtooth bond
- Maisonette entrances expressed with a sawtooth bond
- Shop corner expressed with sawtooth bond
- Vertical stretcher bond band
- Brick finish to underside of soffits
- Top floor brick - waterstruck, double fired. Bond - random. Colour - silver variegated brick, with a degree of patterning within each brick. Mortar - flush pointed, colour white
- Balconies at top floor expressed with a sawtooth bond
- Glazed brick band to base of building. Bond - random. Colour - dark green
- Reconstituted stone banding, polished finish. Colour - light grey
- Reconstituted stone balcony and window surround forming polished finish. Colour - light grey
- Reconstituted stone recessed seat, polished finish. Colour - light grey
- Clear glazed communal entrance door to front and rear of building, with full high glazed window above. Door set to be PAS 24 Approved. Colour - light bronze/gold

- Solid core private entrance door. Door set to be PAS 24 Approved. Colour - TBC
- Refuse door - perforated anodised aluminium. Colour - light bronze/gold
- Slip resistant decorative tile, pattern A to communal entrance floor and walls. Tile pattern extends to extent of entrance recess externally
- Suspended stainless steel soffit with mirrored finish to communal entrance lobby ceiling
- High quality lighting to communal entrance areas
- Slip resistant decorative tile, pattern B to maisonette entrance threshold. Tile pattern extends to extent of entrance recess externally
- Clear glazed window. Frame anodised aluminium. Colour - light bronze/gold
- Clear glazed balcony door. Frame anodised aluminium. Colour - light bronze/gold

- Polyester powder coated steel angled decorative balustrade. Colour - light bronze/gold to match window frames
- Shop front. Clear glazed windows. Window frames, stallriser and fascia anodised aluminium. Colour - light bronze/gold

Hawkins\Brown

60 Bastwick Street
London EC1V 3TN
020 7336 8030t
020 7336 8851f

mail@hawkinsbrown.com
www.hawkinsbrown.com

Project
Agar Grove
Estate Regeneration

Drawing
Plot JKL
Internal Courtyard Elevations

Scale @ A0 @ (A4)
1:100 (1:400)

Date
December 2013

Drawn by
EC/JW

Checked by
SR

Job Number
HB1423

Status
Planning

Drawing No. & Revision
1423_DWG_PlotJKL_00_252