



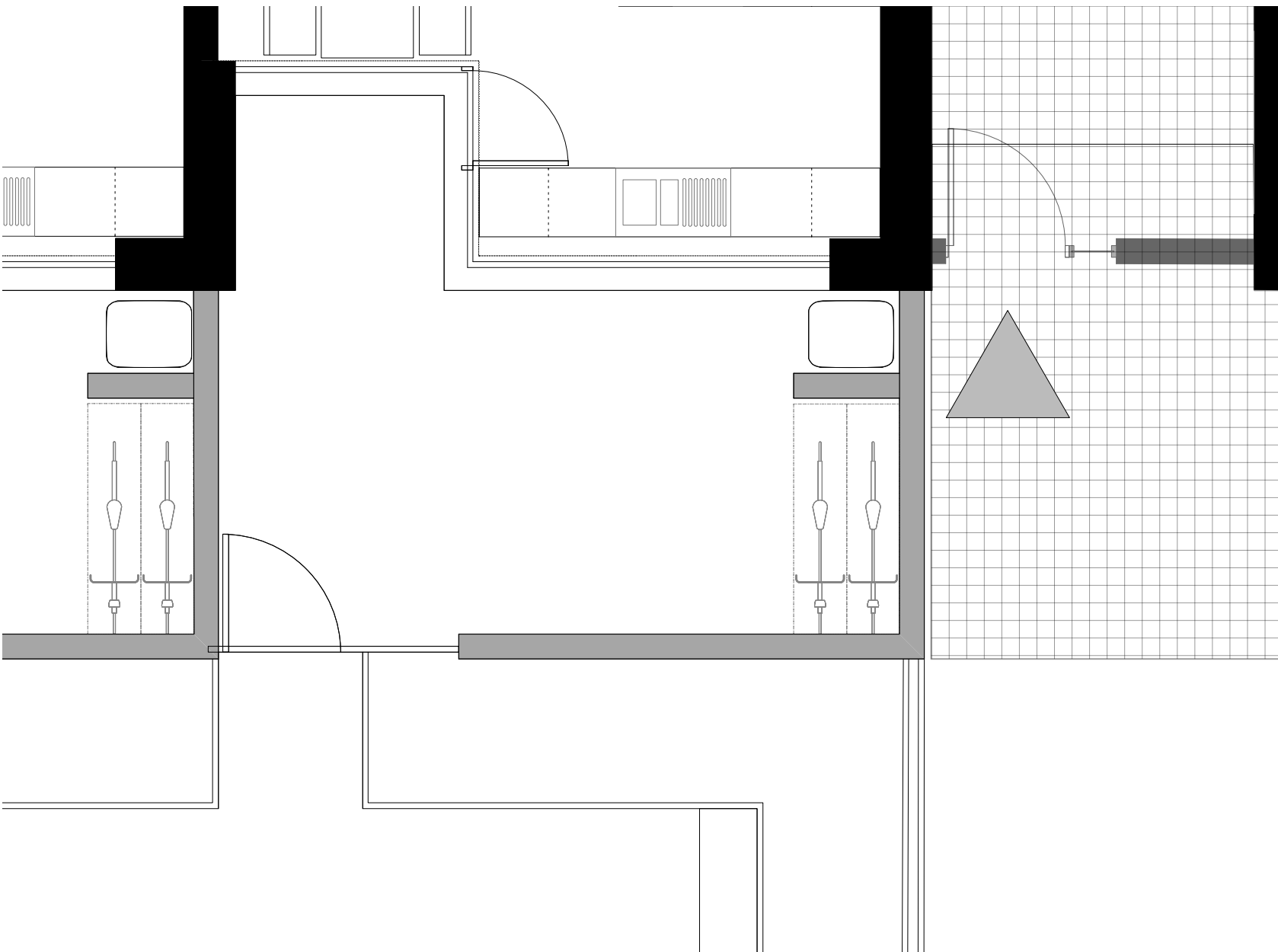
01 Plot H & F garden wall-planter detail



02 Plot G domestic entrance

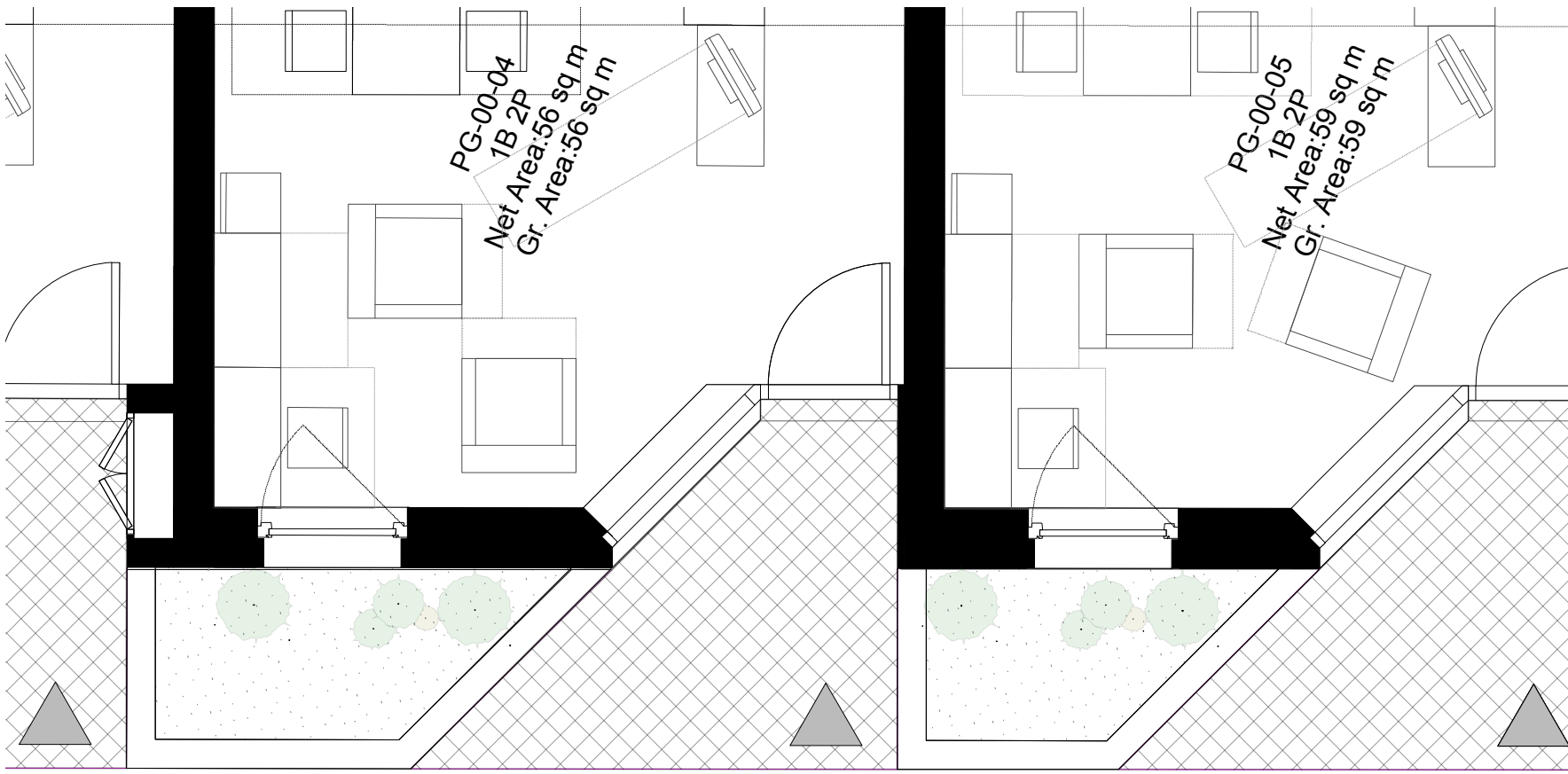


03 Plot I communal entrance



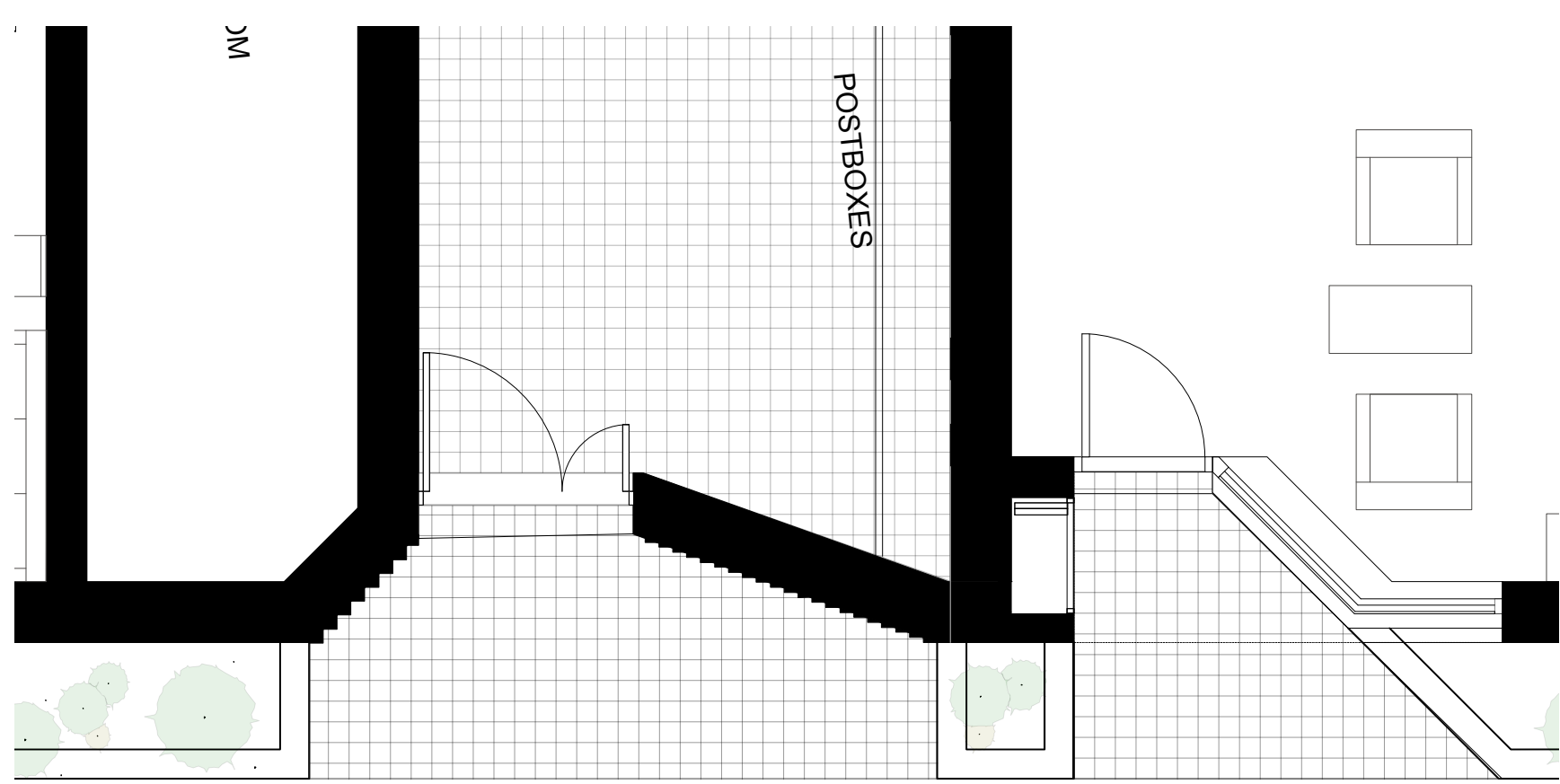
Note:

- Garden wall to be 1100 level nom max 1200 ht.
- Similar detail to Plot F planter



Note:

- similar angled door assembly to be used on plots CDE, I
- perpendicular version to be used in plots F, H



Note:

- similar corbelled recess and door assembly to be used on plots G, C, E, F

<p>NOTES</p> <p>1. Measurements are based on a 1:1 scale.</p> <p>2. All levels are in metres to F.F. (Finished Floor Level) unless noted otherwise.</p> <p>3. Do not use a scale of 1:1.</p> <p>4. Do not use a scale of 1:1.</p> <p>5. Do not use a scale of 1:1.</p> <p>6. Do not use a scale of 1:1.</p> <p>7. Do not use a scale of 1:1.</p> <p>8. Do not use a scale of 1:1.</p> <p>9. Do not use a scale of 1:1.</p> <p>10. Do not use a scale of 1:1.</p> <p>11. Do not use a scale of 1:1.</p> <p>12. Do not use a scale of 1:1.</p> <p>13. Do not use a scale of 1:1.</p> <p>14. Do not use a scale of 1:1.</p> <p>15. Do not use a scale of 1:1.</p> <p>16. Do not use a scale of 1:1.</p> <p>17. Do not use a scale of 1:1.</p> <p>18. Do not use a scale of 1:1.</p> <p>19. Do not use a scale of 1:1.</p> <p>20. Do not use a scale of 1:1.</p> <p>21. Do not use a scale of 1:1.</p> <p>22. Do not use a scale of 1:1.</p> <p>23. Do not use a scale of 1:1.</p>	<p>Rev.</p> <p>Date</p> <p>Description</p>	<p>Annotations Key</p> <p>1 - Glazed brick band/planter/upstand below window with buff colour flush jointed mortar generally</p> <p>2 - Mae Glazed brick in English bond with buff colour flush jointed mortar generally</p> <p>3 - Mae waterstruck brick 1 (pink/purplish variegated) with buff colour flush jointed mortar generally</p> <p>4 - Mae waterstruck brick 2 (buff, variegated) with buff colour flush jointed mortar generally</p> <p>5 - Decorative bond - Projecting to CDE. Sawtooth to G/L Corbell to communal entrances. Sawtooth corbell to block G entrance</p> <p>6 - Perforated bond to bathroom window/rear of stair core/block G front parapet</p> <p>7 - Lighter colour (whitish buff) flush jointed mortar to facade bands of G</p> <p>8 - Recessed mortar joint to block H facade bands and ground floor</p> <p>9 - Reconstituted stone banding/sill in similar colour to surrounding brickwork</p> <p>10 - Reconstituted stone inset signage in similar colour to surrounding brickwork to communal and domestic doors</p> <p>11 - Reconstituted stone coping to blocks CDE, G, L, H</p> <p>12 - Reconstituted stone capping to F&H cores</p> <p>13 - Brickwork coping to parapet to block F & E & F&H rear parapet</p> <p>14 - Brickwork sill to block F, D & rear of block H</p> <p>15 - Anodised window, frame set behind brickwork reveal, min set back 225</p> <p>16 - Anodised window, flush to face of brickwork at ground floor only</p> <p>17 - Anodised window/door assembly with angled side light</p> <p>18 - Anodised window/door assembly with perpendicular side light to block F</p> <p>19 - Decorative balustrade with curved profile to block F&H domestic balconies. Decorative balustrade with angled profile to block CDE balconies and gates. Micaceous Iron Oxide finish, complimentary colour to anodised window frame</p> <p>20 - Glazed balustrade to upper floor windows</p> <p>21 - Decorative gates with angled profile to block F&H communal gates and bin/bike stores, Micaceous Iron Oxide finish, complimentary colour to anodised window frame</p> <p>22 - Clay roof tile in Staffordshire blue finish to block F, and block H</p> <p>23 - Patterned tiling to domestic and communal entrances, balconies & loggias, and entrance halls</p>	<p>0 1 2 M</p> <p>1</p>	<p>Job No. 1423</p> <p>Job Name Agar Grove</p> <p>File Plot CDEF&H Typical Details 2</p> <p>Status PL</p> <p>Scale Varies</p> <p>Drawing No. 1423 DWG PL CDE 00 2B2</p> <p>Date 13.12.13</p> <p>Revised on -</p>