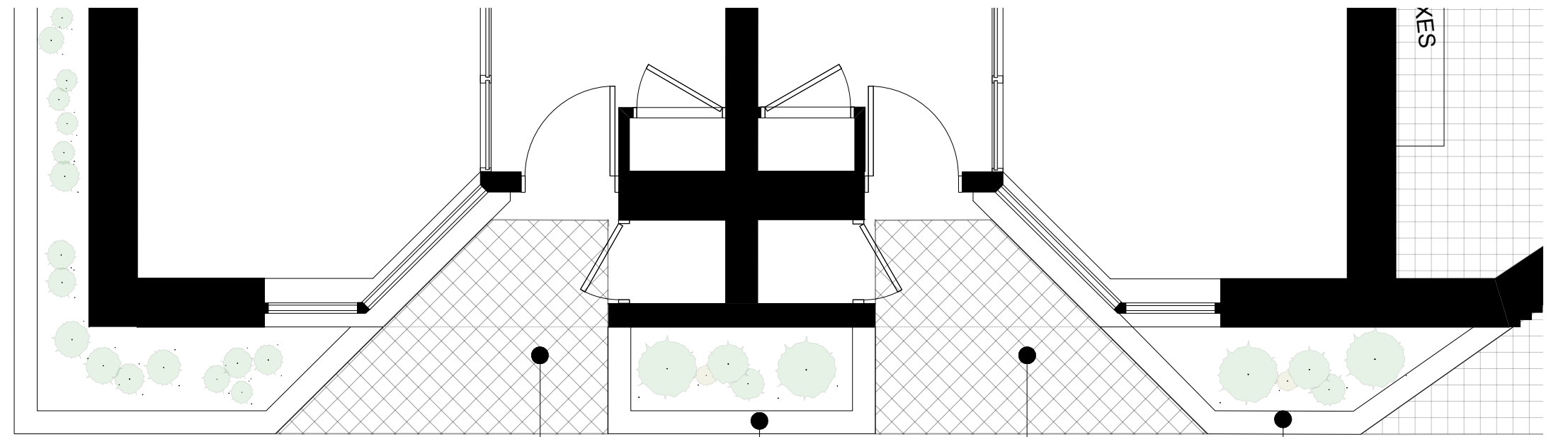
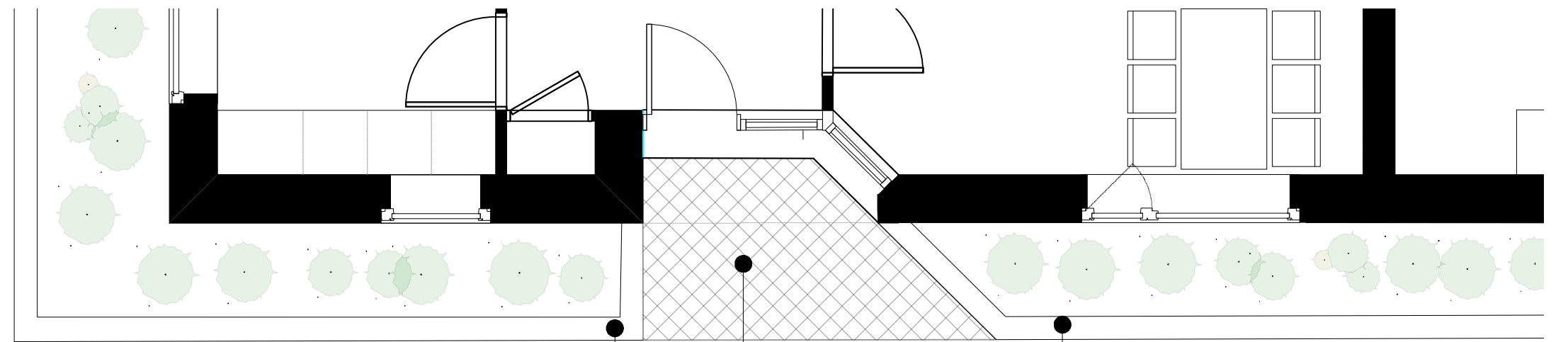




01 Block E Front Elevation
1:50



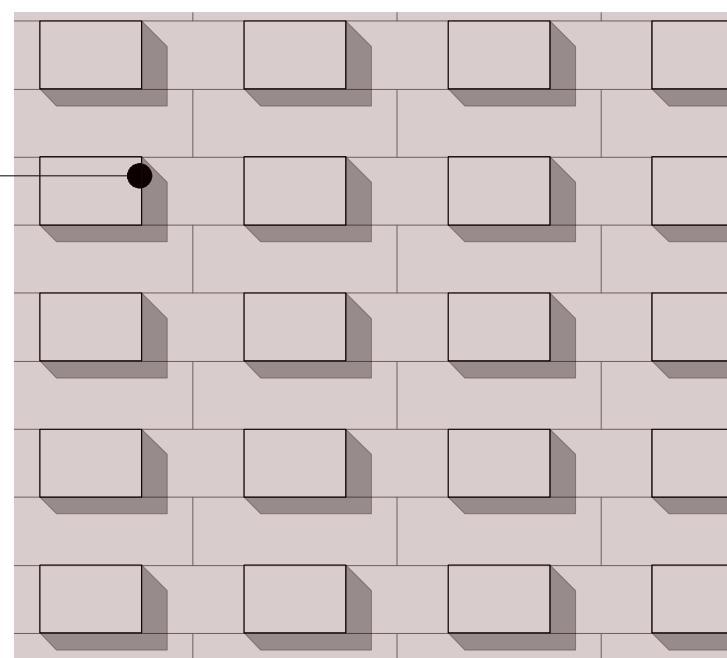
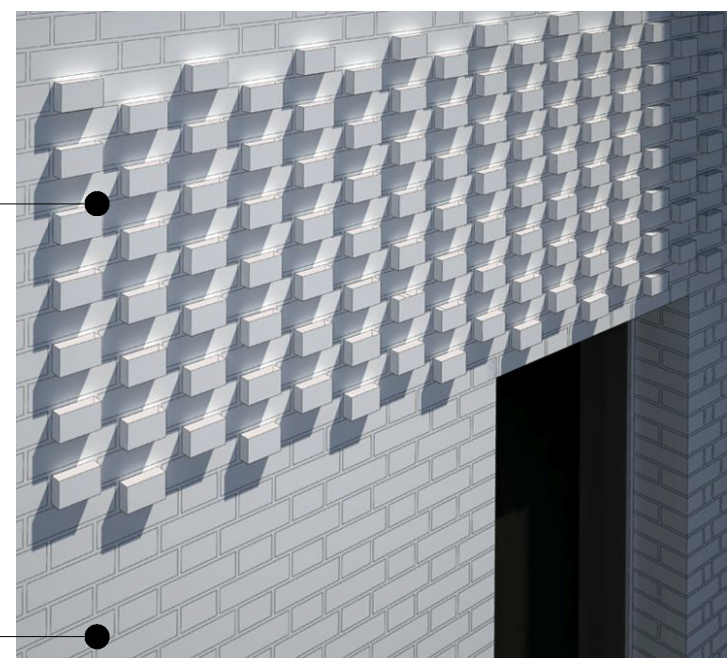
03 Block C Front Entrance Detail
1:50



04 Block C Front Entrance Detail
1:50



02 Block D Front Elevation Detail
1:50

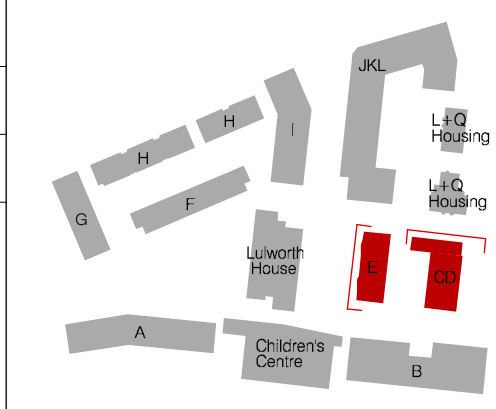


05 Brick Detail
1:10

NOTES:
1 - Measurements are based on metric system
2 - All levels are in meters to Principal Datum (PD) unless noted otherwise
3 - Do not scale drawing
4 - Figure dimensions are to be followed
5 - Do not use for construction unless expressly permitted
6 - Contractor should verify all conditions on site and notify contract administrator of any variations from dimensions before construction
7 - Internal furniture is indicative only

The data contained in this document includes proprietary rights of mae. Any party in receipt of the document shall receive and hold the same in confidence and agrees not to duplicate or otherwise reproduce the document in whole or in part, nor disclose the contents of the same without the written consent of mae.

Rev.
Date
Description



Annotations Key
1 - Glazed brick band/plaster/upstand below window with buff colour flush jointed mortar generally
2 - Mae Dinker brick in English bond with buff colour flush jointed mortar generally
3 - Mae waterstruck brick 1 (pink/purplish variegated) with buff colour flush jointed mortar generally
4 - Mae waterstruck brick 2 (buff, variegated) with buff colour flush jointed mortar generally
5 - Decorative bond - Projecting to CDE. Sawtooth to G/L Corbell to communal entrances. Sawtooth corbell to block G entrance
6 - Perforated bond to bathroom window/rear of stair core/block G front parapet
7 - Lighter colour (whitish buff) flush jointed mortar to faAade bands of G
8 - Recessed mortar joint to block H facade bands and ground floor
9 - Reconstituted stone banding/sill in similar colour to surrounding brickwork
10 - Reconstituted stone inset signage in similar colour to surrounding brickwork to communal and domestic doors
11 - Reconstituted stone coping to blocks CDE,G,I,H,
12 - Reconstituted stone capping to F&H cores

13 - Brickwork coping to parapet to block F & E 8F&H rear parapet
14 - Brickwork sill to block F, D & rear of block H
15 - Anodised window, frame set behind brickwork reveal, min set back 225
16 - Anodised window, flush to face of brickwork at ground floor only
17 - Anodised window/door assembly with angled side light
18 - Anodised window/door assembly with perpendicular side light to block F
19 - Decorative balustrade with curved profile to block F&H domestic balconies. Decorative balustrade with angled profile to block CDE balconies and gates. Micaceous Iron Oxide finish, complimentary colour to anodised window frame
20 - Glazed balustrade to upper floor windows
21 - Decorative gates with angled profile to block F&H communal gates and bin/bike stores, Micaceous Iron Oxide finish, complimentary colour to anodised window frame
22 - Clay roof tile in Staffordshire blue finish to block F, and block H
23 - Patterned tiling to domestic and communal entrances, balconies & loggias, and entrance halls



mae
mae LLP Architects
1 Naoroji Street
London WC1X 0GB
t: +44 (0)20 7704 6060
f: +44 (0)20 7833 2473
e: office@mae-llp.co.uk

Job No. 1423	Job Name Agar Grove
Title Plot CDE Typical Details	
Status PL	Scale Varies
Drawing No. 1423 DWG PL_CDE_00_280	Date 13.12.13
Revision -	