

Revisions

Hawkins\Brown

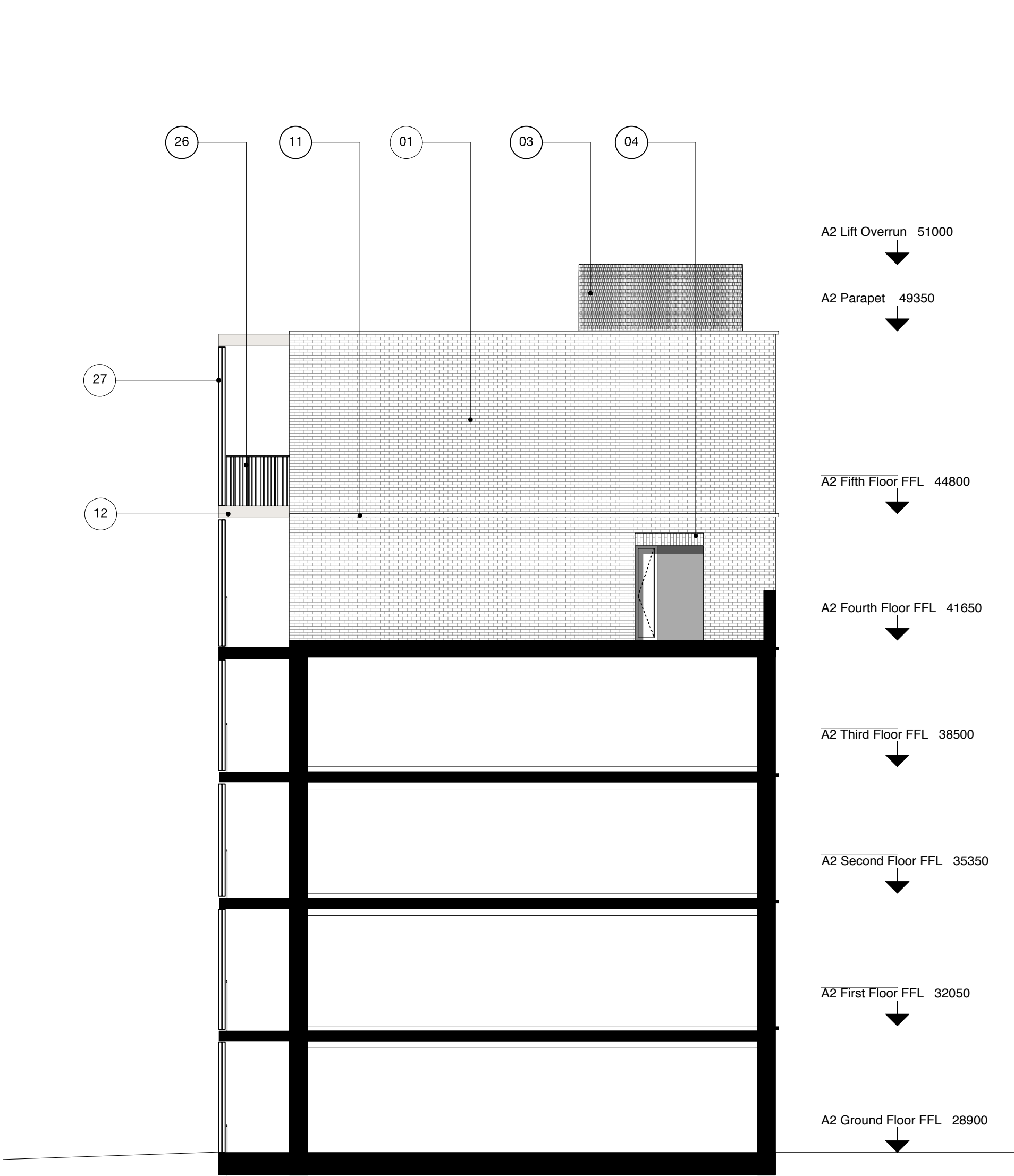
60 Bastwick Street
London EC1V 3TN
020 7336 8030t
020 7336 8851f

mail@hawkinsbrown.com
www.hawkinsbrown.com

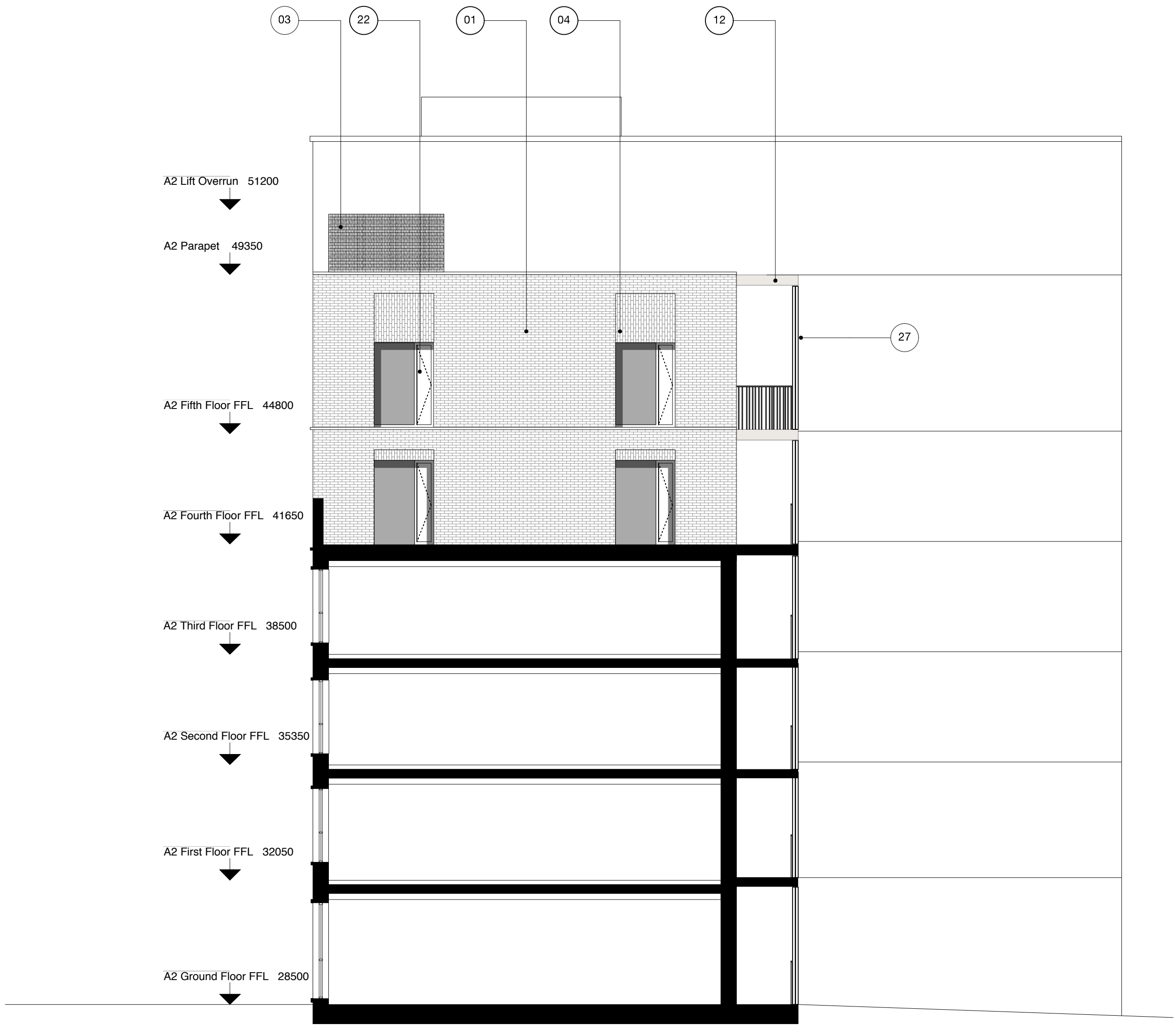
Project
Agar Grove
Estate Regeneration

Drawing
Plot A
Side Elevations E2 & W2

Scale @ A1 @ (A3) 1:100 (200)	Date December 2013
Drawn by PK	Checked by SR
Job Number HB1423	Status Planning
Drawing No. & Revision 1423_DWG_PL_A_00_253	



01 **Side Elevation East (E2)**
Scale 1:100 @ A1



02 **Side Elevation West (W2)**
Scale 1:100 @ A1

Plot A Material Specification

- Brick type used throughout building - textured clinker brick, engobe/coal fired. Bond - random. Colour - brown/purple variegated brick with a degree of patterning within each brick. Mortar - flush pointed, colour to be determined after review of sample boards
- Ground and first floor horizontal ribbed texture
- Stair cores and lift over runs/roof access elements expressed with sawtooth bond
- Vertical stretcher bond to window heads
- Lower roof terrace walls - pattern formed from absent headers
- Glazed brick band to base of building. Bond - random. Colour - dark green

- Cantilevered reconstituted stone canopy with recessed lighting to communal entrances, polished finish. Colour - light grey
- Cantilevered reconstituted stone canopy with recessed lighting to maisonette entrances, polished finish. Colour - light grey
- Reconstituted stone balcony ledge, polished finish. Colour - light grey
- Reconstituted stone window base, forming recessed seat, polished finish. Colour - light grey
- Reconstituted stone banding, polished finish. Colour - light grey
- Reconstituted stone banding to balcony, polished finish. Colour - light grey
- Concrete upstand to ground floor screens
- Clear glazed communal entrance door, with full height glazed window above. Door set to be PAS 24 Approved. Colour - light bronze/gold

- High quality lighting to communal entrance areas
- Slip resistant decorative tile, pattern A to communal entrance floor and walls. Tile pattern extends to extent of overhead canopy externally
- Suspended stainless steel soffit with mirrored finish to communal entrance lobby ceiling
- Slip resistant decorative tile, pattern B to maisonette entrance threshold. Tile pattern extends to extent of overhead canopy externally
- Refuse door - perforated anodised aluminium. Colour - light bronze/gold
- Solid core private entrance door, with clear glazed side light. Door set to be PAS 24 Approved. Colour - TBC
- Clear glazed communal entrance door to garden, with clear glazed side panel. Door set to be PAS 24 Approved. Colour - light bronze/gold
- Clear glazed window with solid side opening to match frame. Frame and opening side panel - anodised aluminium. Colour - light bronze/gold

- Clear glazed balcony door. Frame anodised aluminium. Colour - light bronze/gold
- Window frame set behind brickwork reveal, minimum set back 225mm
- Polyester powder coated steel section balustrade. Colour - light bronze/gold to match window frames. Random balustrade spacing
- Polyester powder coated steel section balustrade. Colour - light bronze/gold to match window frames. Consistent balustrade spacing
- Full height anodised perforated aluminium panels, with a square channel profile. Panels to be fixed at ends. Middle sections may be movable, subject to detailed solar shading analysis
- Anodised aluminium perforated acoustic attenuation panel. Colour - light bronze/gold

