

Revisions

Hawkins\Brown

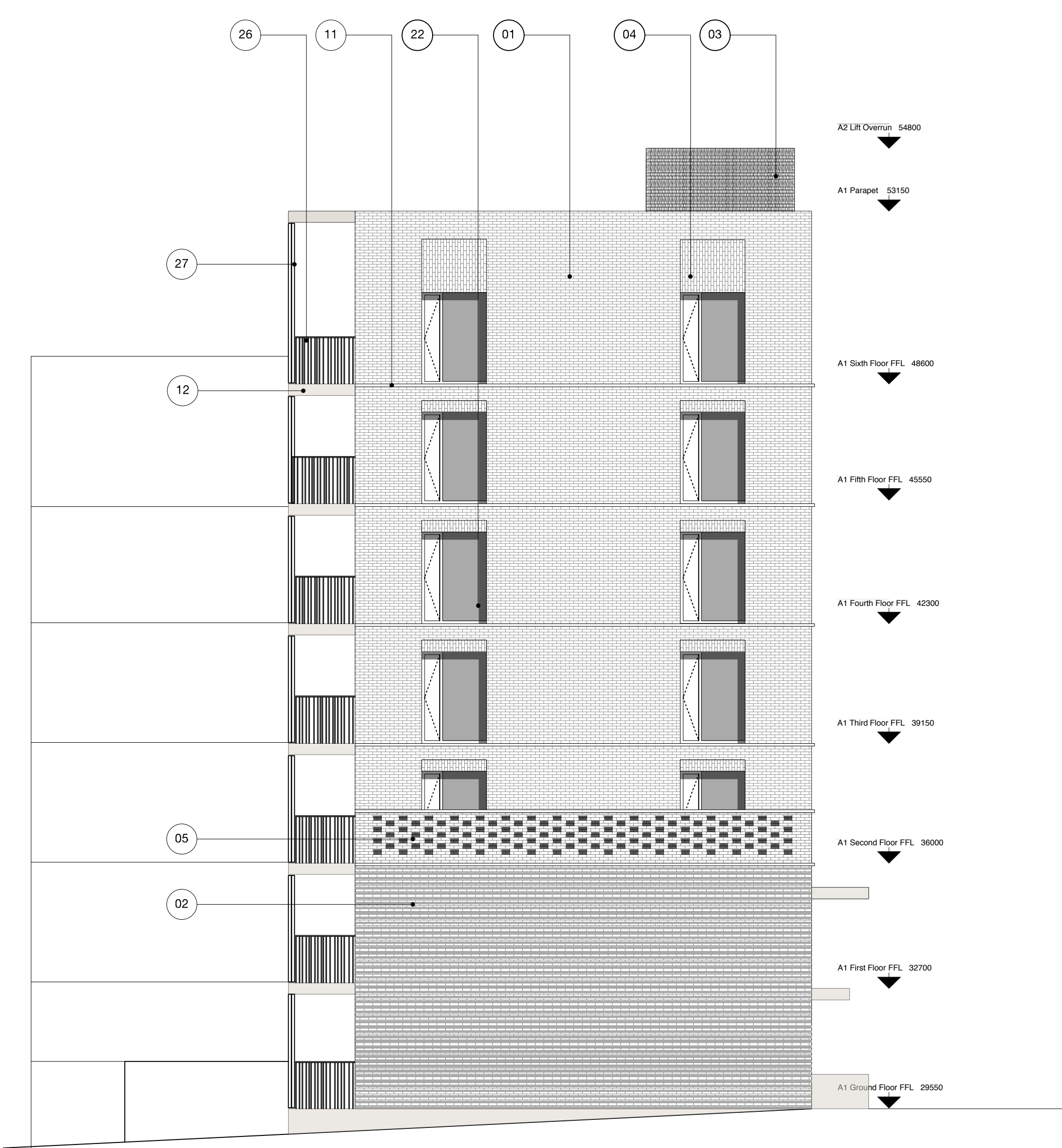
60 Bastwick Street
London EC1V 3TN
020 7336 8030t
020 7336 8851f

mail@hawkinsbrown.com
www.hawkinsbrown.com

Project
Agar Grove
Estate Regeneration

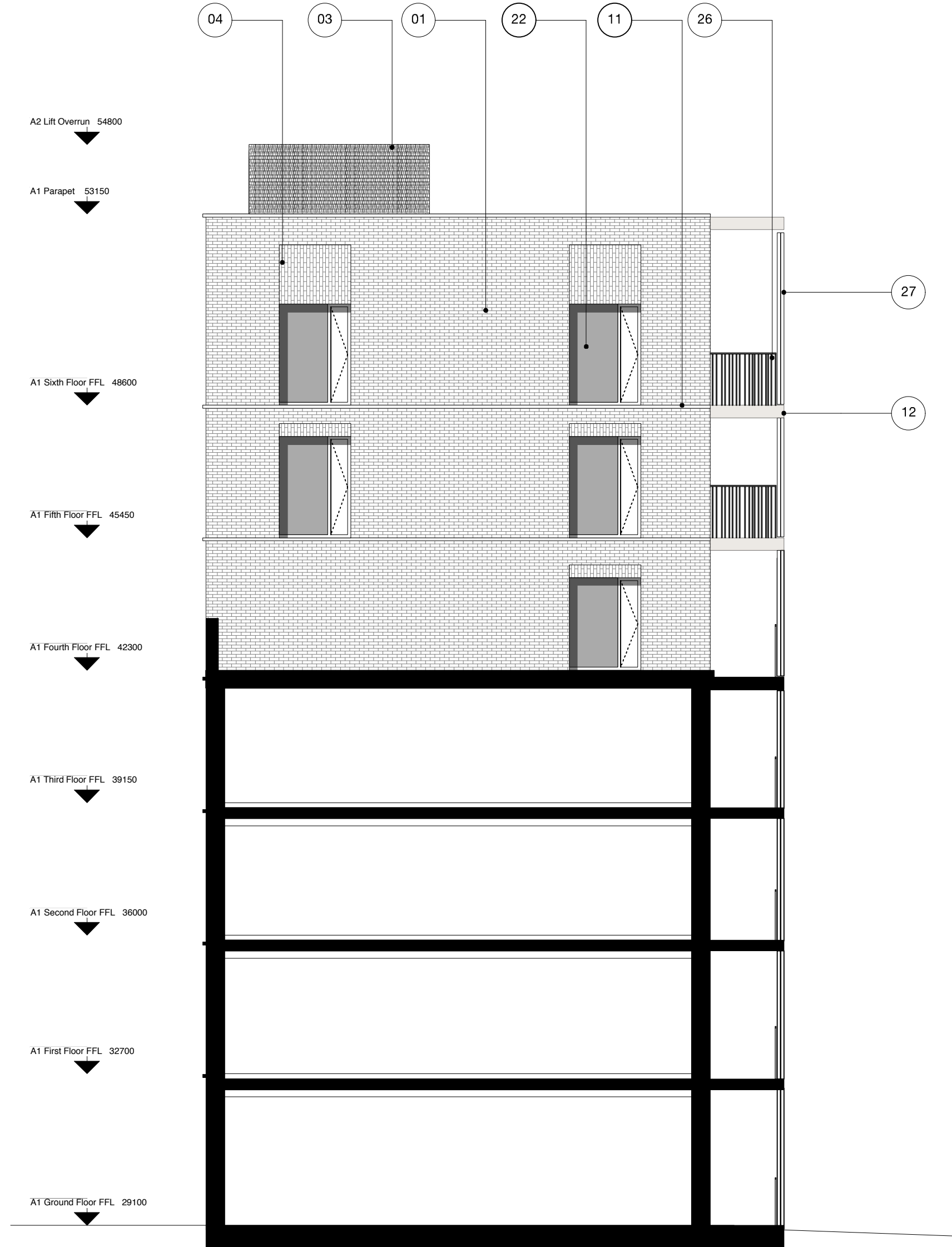
Drawing
Plot A
Side Elevations E1 & W1

Scale @ A1 @ (A3) 1:100 (200)	Date December 2013
Drawn by PK	Checked by SR
Job Number HB1423	Status Planning
Drawing No. & Revision 1423_DWG_PL_A_00_252	



Side Elevation East (E1)

Scale 1:100 @ A1



Side Elevation West (W1)

Scale 1:100 @ A1

Plot A Material Specification

- | | | |
|---|--|--|
| ① Brick type used throughout building - textured clinker brick, engobe/coal fired. Bond - random. Colour - brown/purple variegated brick with a degree of patterning within each brick. Mortar - flush pointed, colour to be determined after review of sample boards | ⑦ Cantilevered reconstituted stone canopy with recessed lighting to communal entrances, polished finish. Colour - light grey | ⑮ High quality lighting to communal entrance areas |
| ② Ground and first floor horizontal ribbed texture | ⑧ Cantilevered reconstituted stone canopy with recessed lighting to maisonette entrances, polished finish. Colour - light grey | ⑯ Slip resistant decorative tile, pattern A to communal entrance floor and walls. Tile pattern extends to extent of overhead canopy externally |
| ③ Stair cores and lift over runs/roof access elements expressed with sawtooth bond | ⑨ Reconstituted stone balcony ledge, polished finish. Colour - light grey | ⑰ Suspended stainless steel soffit with mirrored finish to communal entrance lobby ceiling |
| ④ Vertical stretcher bond to window heads | ⑩ Reconstituted stone window base, forming recessed seat, polished finish. Colour - light grey | ⑱ Slip resistant decorative tile, pattern B to maisonette entrance threshold. Tile pattern extends to extent of overhead canopy externally |
| ⑤ Lower roof terrace walls - pattern formed from absent headers | ⑪ Reconstituted stone banding, polished finish. Colour - light grey | ⑲ Refuse door - perforated anodised aluminium. Colour - light bronze/gold |
| ⑥ Glazed brick band to base of building. Bond - random. Colour - dark green | ⑫ Reconstituted stone banding to balcony, polished finish. Colour - light grey | ⑳ Solid core private entrance door, with clear glazed side light. Door set to be PAS 24 Approved. Colour - TBC |
| | ⑬ Concrete upstand to ground floor screens | ㉑ Clear glazed communal entrance door to garden, with clear glazed side panel. Door set to be PAS 24 Approved. Colour - light bronze/gold |
| | ⑭ Clear glazed communal entrance door, with full hight glazed window above. Door set to be PAS 24 Approved. Colour - light bronze/gold | ㉒ Clear glazed window with solid side opening to match frame. Frame and opening side panel - anodised aluminium. Colour - light bronze/gold |

- | | |
|---|--|
| ⑳ Clear glazed balcony door. Frame anodised aluminium. Colour - light bronze/gold | ㉓ Polyester powder coated steel section ballustrade. Colour - light bronze/gold to match window frames. Random ballustrade spacing |
| ㉑ Window frame set behind brickwork reveal, minimum set back 225mm | ㉔ Polyester powder coated steel section ballustrade. Colour - light bronze/gold to match window frames. Consistent ballustrade spacing |
| ㉒ Full height anodised perforated aluminium panels, with a square channel profile. Panels to be fixed at ends. Middle sections may be movable, subject to detailed solar shading analysis | ㉕ Anodised aluminium perforated acoustic attenuation panel. Colour - light bronze/gold |

