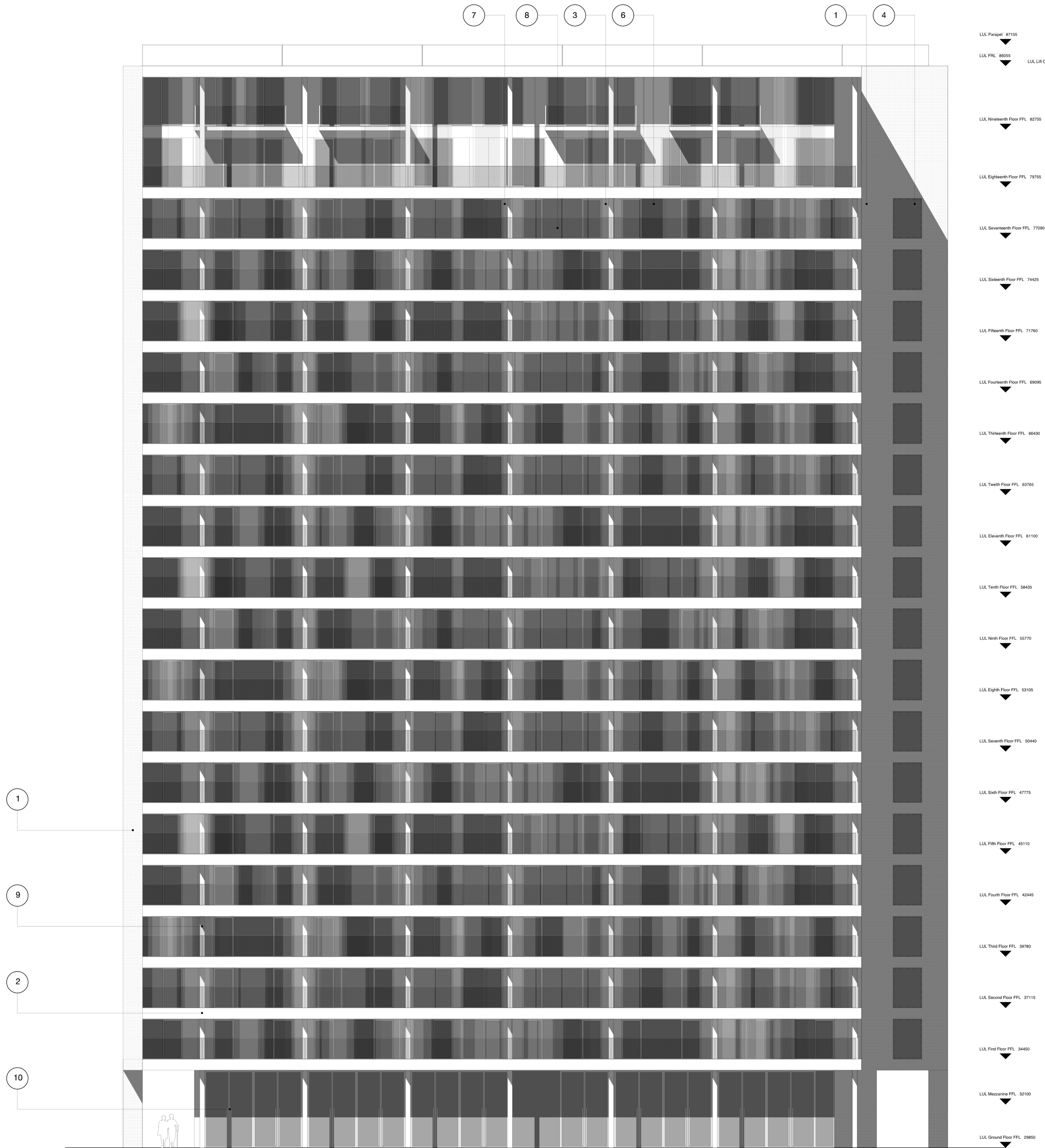


01 North Elevation
Scale 1:100 @ A0



02 East Elevation
Scale 1:100 @ A0

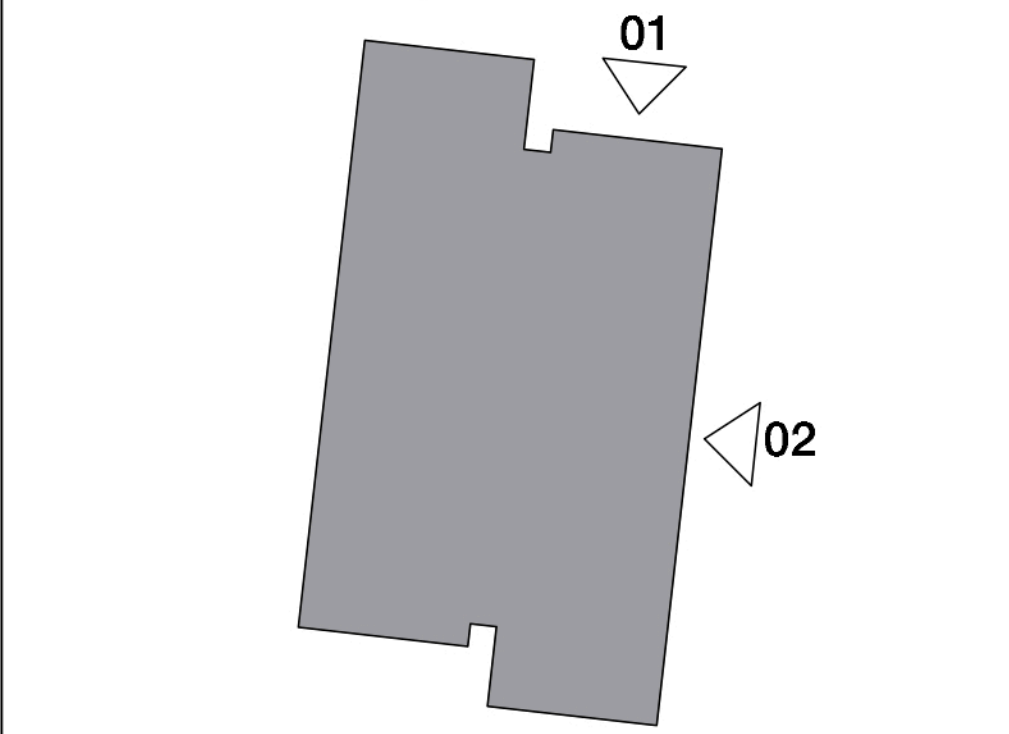
Plot Lulworth Material Specification

- 1 Brick used throughout building - Wirecut semi-glazed clinker brick, engobe finish. Colour - brown/purple/silver variegated brick with a degree of patterning within each brick. Bond - English. Mortar - Recessed pointing, colour to be determined after review of sample boards
- 2 Concrete, fairfaced concrete precast panels to form fascia and soffit of balconies. Colour - TBC
- 3 Back painted glass spandrel panels to form building's external envelope. Colour - TBC
- 4 Clear glazed flush window with concealed frame
- 5 Clear glazed curtain wall system with concealed frame to full height of building, forming a rainscreen to circulation core and corridor
- 6 Clear glazed sliding doors to balconies. Frame - PPC aluminium. Colour - TBC
- 7 Winter Garden Glazing, movable glazing panels to fully open or enclose external balconies. Glass colour - TBC

- 8 Stainless steel balustrade supporting stainless steel wire mesh system (by Jakob or similar approved by Architect)
- 9 Painted steel structure, colour TBC
- 10 Full height opening clear glazed doors/windows to ground floor residential/commercial units. Door set to residential units to be PAS 24 Approved. Frame - Anodised aluminium. Colour - TBC
- 11 Full height back painted glass within frame to match doors/windows. Colour of back painted glass - TBC. Insulated where there is a habitable space behind
- 12 Raised terrace for residential units
- 13 Framed apature to be lined with bricks to initial extent of entrance
- 14 Bridge to entrance with stainless steel balustrade supporting stainless steel wire mesh system (by Jakob or similar approved by Architect)

Plot Lulworth - Key Plan

1:500 @ A0



Copyright Hawkins Brown Architects LLP
No implied license exists. This drawing should not be used to calculate areas for the purposes of valuation. Do not scale this drawing. All dimensions to be checked on site by the contractor and such dimensions to be their responsibility. All work must comply with relevant British Standards and Building Regulations requirements. Drawing errors and omissions to be reported to the architect.

Revisions

Hawkins\Brown

60 Bastwick Street
London EC1V 3TN
020 7336 8030t
020 7336 8851f

mail@hawkinsbrown.com
www.hawkinsbrown.com

Project
Agar Grove
Estate Regeneration

Drawing
Plot Lulworth
North & East Elevations

Scale @ A0 @ (A4)
1:100 (1:400)

Date
December 2013

Drawn by
IC

Checked by
SR

Job Number
HB1423

Status
Planning

Drawing No. & Revision
1423_DWG_PlotLUL_00_250