

Bicycle store  
2.5m x 2.5m to  
house 7No.  
cycles stored  
vertically

PURPOSE OF DRAWING:

LOWER GROUND

CLIENT NAME:

LSBF

PROJECT NAME:

76-78 RED LION STREET  
HOLBORN WC1R 4NA

DWG TITLE:

LOWER GROUND

DWG REF:

DWG NO: AG-02/1

REVISION NO:

SCALE: 1:50@A4

DATE: 03/12/13

DRAWN BY: O Polyakova

CHECKED BY: A Goo

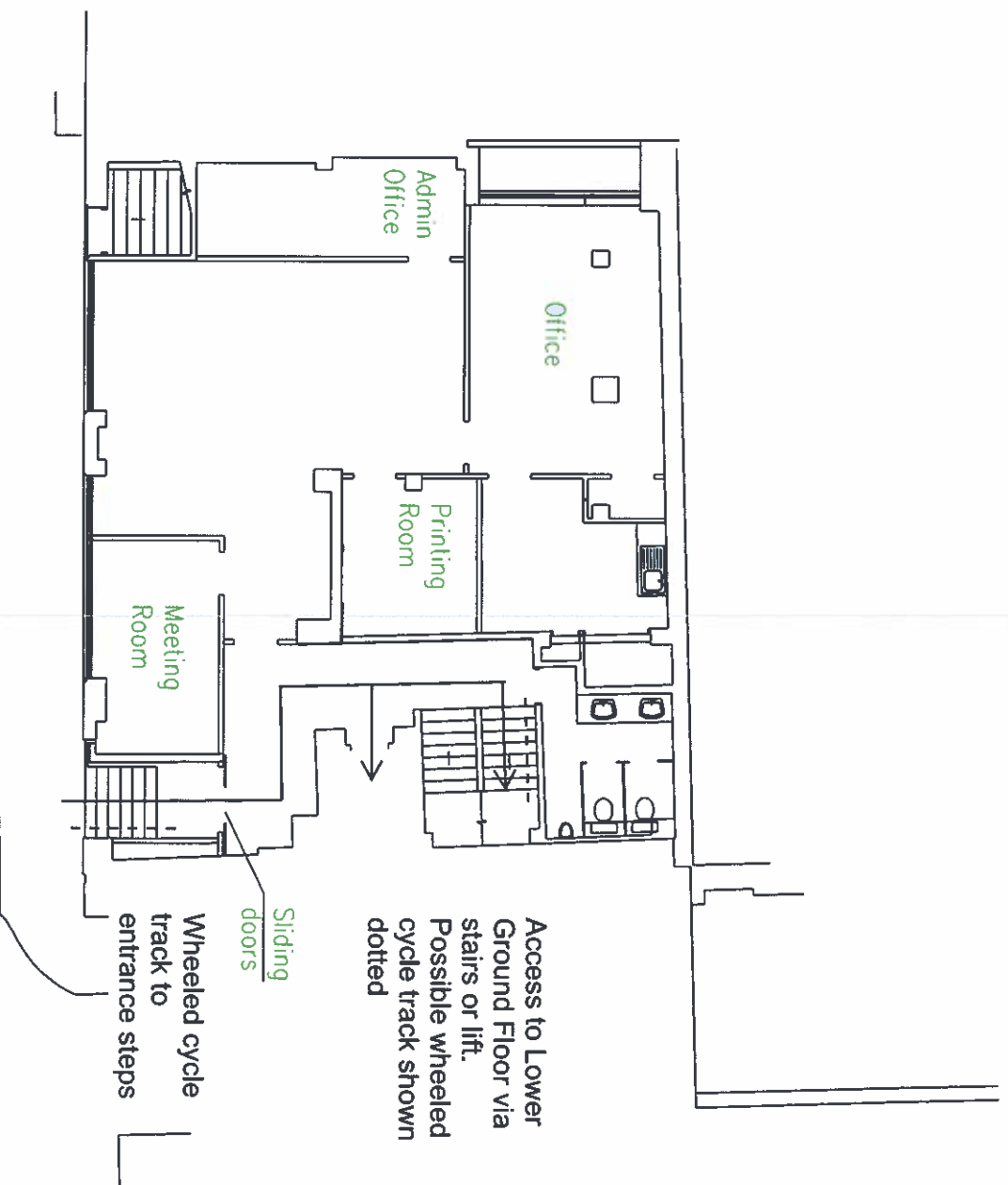
REV DATE

REVISION

INITIALS

London  
School of Business  
& Finance





PURPOSE OF DRAWING:

GROUND FLOOR

CLIENT NAME:

LSBF

PROJECT NAME:

76-78 RED LION STREET  
HOLBORN WC1R 4NA

DWG TITLE

GROUND FLOOR

DWG REF:

DWG NO: AG-031

REVISION NO:

SCALE: 1:50 @ A4

DATE: 03/12/13

DRAWN BY: O Polyakova

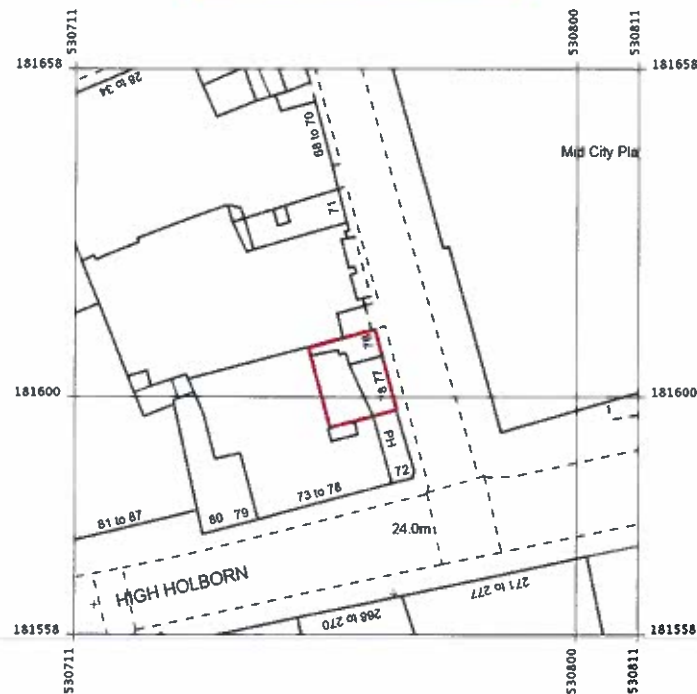
CHECKED BY: A Gog

REV DATE

REVISION

INITIALS

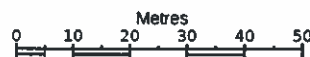




Produced 25 May 2012 from the Ordnance Survey National Geographic Database and incorporating surveyed revision available at this date. Reproduction in whole or part is prohibited without the prior permission of Ordnance Survey. © Crown Copyright 2012.

Ordnance Survey and the OS Symbol are registered trademarks of Ordnance Survey, the national mapping agency of Great Britain.

The representation of a road, track or path is no evidence of a right of way. The representation of features as lines is no evidence of a property boundary.



1:1250



76-78  
RED LION STREET  
LONDON  
WC1R 4NA

Supplied by: **Stanfords**  
Reference: OI425893  
Centre coordinates: 530761 181608