


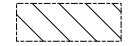


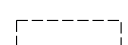

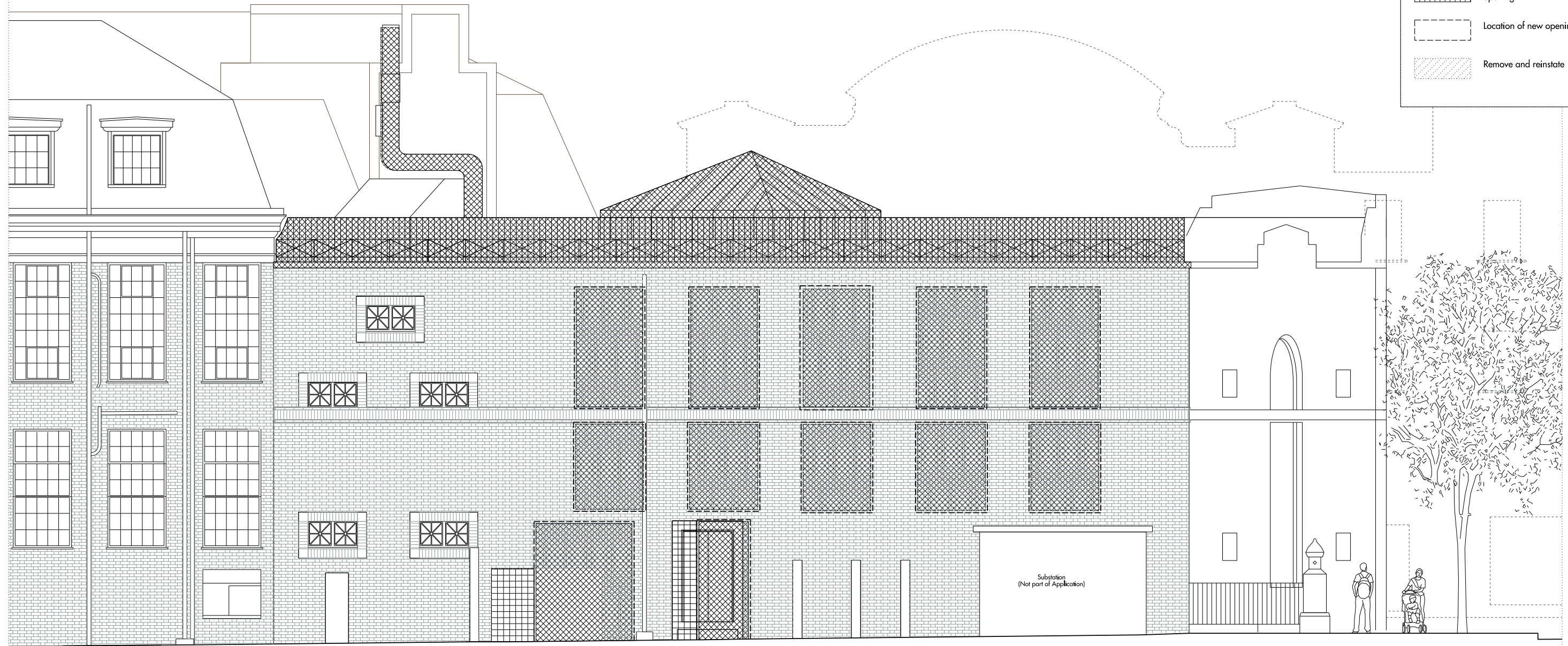


KEY

-  Demolish entire element (internal partition)
-  Demolish entire element (floors/roofs)
-  Demolish entire element (assumed structure)
-  Remove floor finish and screed
-  Remove internal fit out elements/plant
-  Alteration to existing opening
-  Location of new opening
-  Remove and reinstate



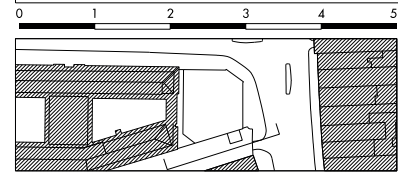
CHURCH AVENUE

Oblique elevation

KENTISH TOWN ROAD

Extent of Application

01 SOUTH ELEVATION
SCALE 1:50 @ A1



REV	DATE	DESCRIPTION	CHK
P1	04.11.13	Pre-floring Consultation	AC
P2	22.11.13	PLANNING ISSUE	AC

Allies and Morrison
85 Southwark Street
London SE1 0HX
telephone 020 7921 0100
facsimile 020 7921 0101
email info@alliesandmorrison.co.uk
A&M JOB NO: 863

187 KENTISH TOWN ROAD
SOUTH ELEVATION - DEMOLITION
PLANNING
863_07_105
SCALE: 1:50 @A1 1:100 @A3

P1
Revision