

**Consulting Structural Engineers  
Consulting Civil Engineers**

1– 5 Offord St London N1 1DH

**Telephone** 020 7700 6666

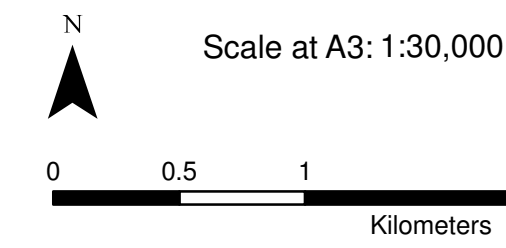
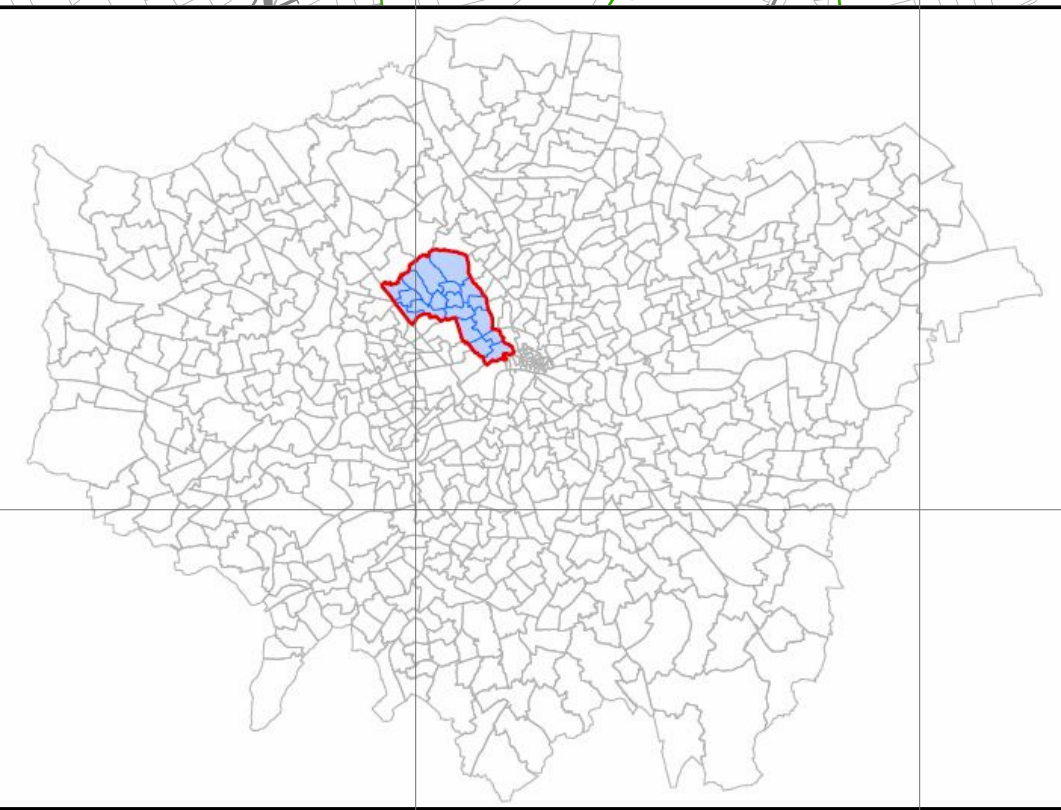
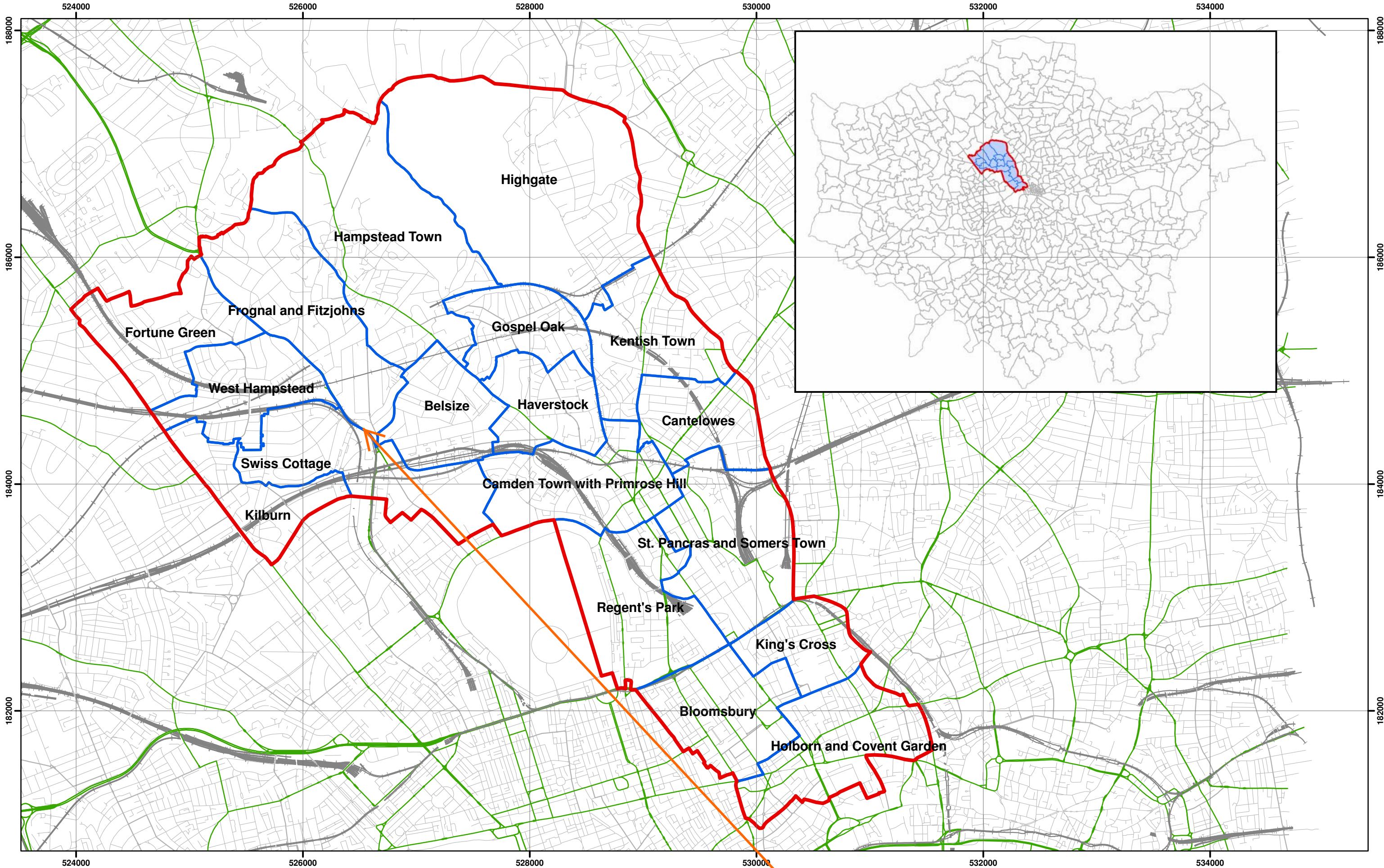
**Fax** 020 7700 6686

[design@conisbee.co.uk](mailto:design@conisbee.co.uk)

[www.conisbee.co.uk](http://www.conisbee.co.uk)

## **APPENDIX A**

**FIGURES FROM THE CAMDEN GEOLOGICAL, HYDROGEOLOGICAL AND  
HYDROLOGICAL STUDY WITH 9-12 NEW COLLEGE PARADE LOCATED**

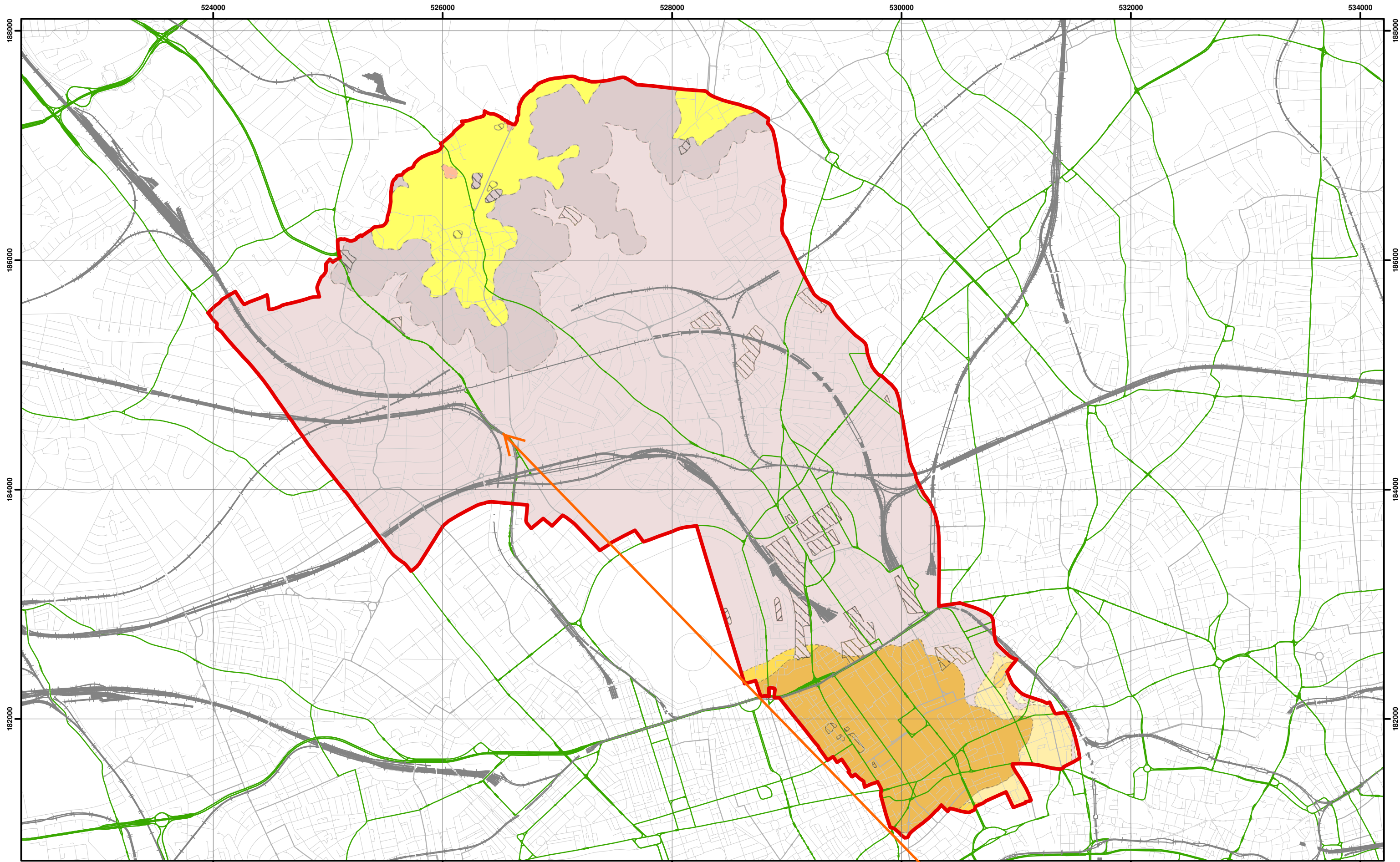


Coordinate System:  
British National Grid  
GCS\_OSGB\_1936

- Legend**
- London Borough of Camden
  - Camden Wards
  - Railway Lines
  - A Roads

9-12 New College Parade,  
Finchley Road

**Camden Geological, Hydrogeological  
and Hydrological Study**  
Camden Administrative Boundaries

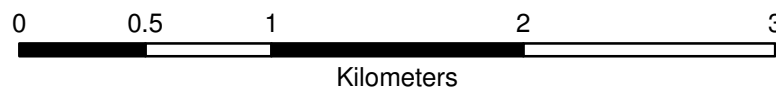


Data source - BGS Mapping - Scale 1:10,000



Scale at A3: 1:30,000

Coordinate System:  
British National Grid  
GCS\_OSGB\_1936



**Legend**

- London Borough of Camden
- Railway Lines
- A Roads

- BGS 1:10K Artificial Ground
- MADE GROUND
- WORKED GROUND

**BGS 1:10K Drift Geology**

- ALLUVIUM
- HACKNEY GRAVEL FORMATION
- LANGLEY SILT FORMATION
- LYNCH HILL GRAVEL FORMATION
- STANMORE GRAVEL FORMATION

**BGS 1:10K Solid Geology**

- BAGSHOT FORMATION
- CLAYGATE MEMBER
- LAMBETH GROUP
- LONDON CLAY FORMATION

**Camden Geological, Hydrogeological  
and Hydrological Study**  
Camden Geological Map

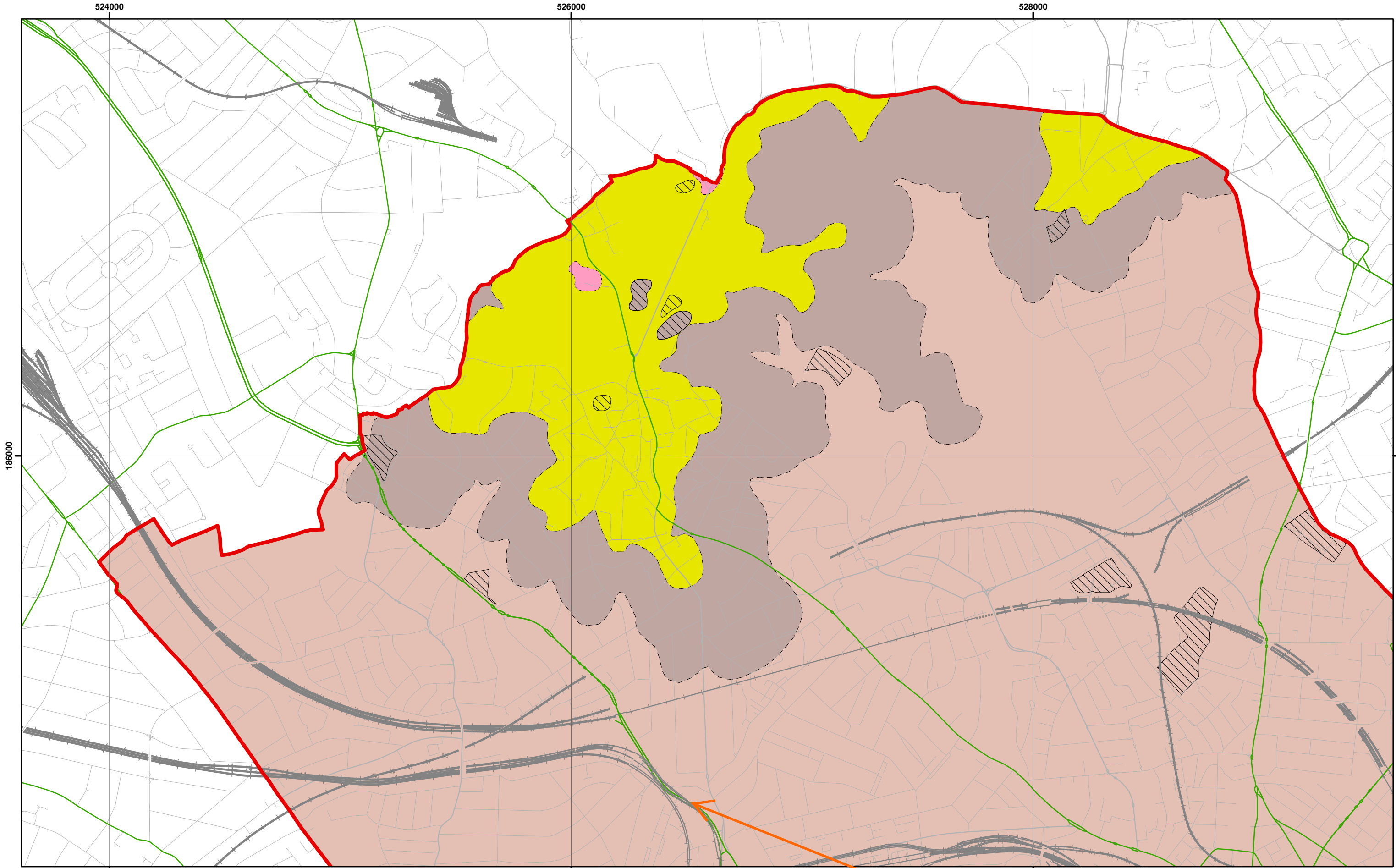
9-12 New College Parade,  
Finchley Road

213923

FIGURE

**3**

NB: Geological boundaries are largely indicative based on available geological mapping data

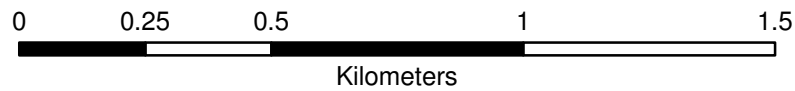


Data Source: BGS Mapping - Scale 1:10,000



Scale at A3: 1:15,000

Coordinate System:  
British National Grid  
GCS\_OSGB\_1936



**Legend**

- |                          |                             |                             |                         |
|--------------------------|-----------------------------|-----------------------------|-------------------------|
| London Borough of Camden | BGS 1:10K Artificial Ground | BGS 1:10K Drift Geology     | BGS 1:10K Solid Geology |
| Railway Lines            | MADE GROUND                 | ALLUVIUM                    | BAGSHOT FORMATION       |
| A Roads                  | WORKED GROUND               | HACKNEY GRAVEL FORMATION    | CLAYGATE MEMBER         |
|                          |                             | LANGLEY SILT FORMATION      | LAMBETH GROUP           |
|                          |                             | LYNCH HILL GRAVEL FORMATION | LONDON CLAY FORMATION   |
|                          |                             | STANMORE GRAVEL FORMATION   |                         |

**Camden Geological, Hydrogeological and Hydrological Study**

**North Camden Geological Map**

9-12 New College Parade, Finchley Road

213923

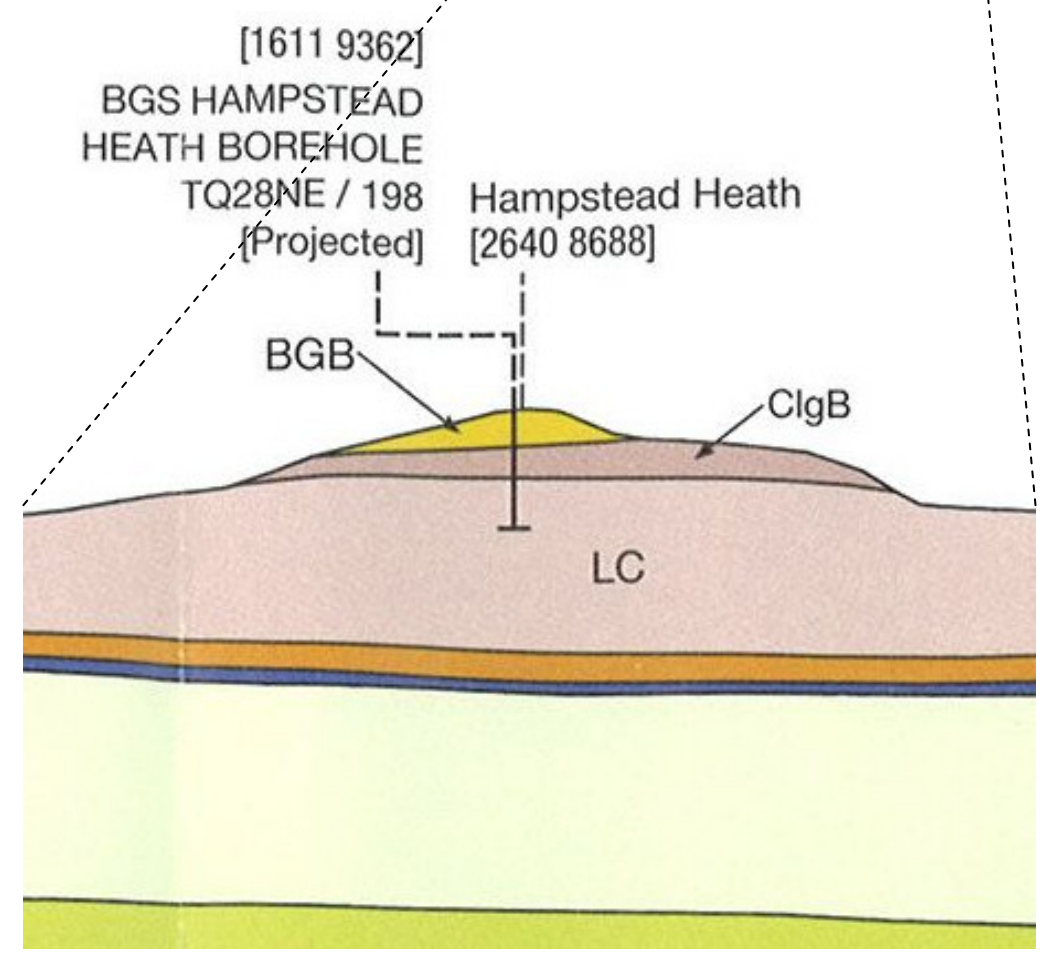
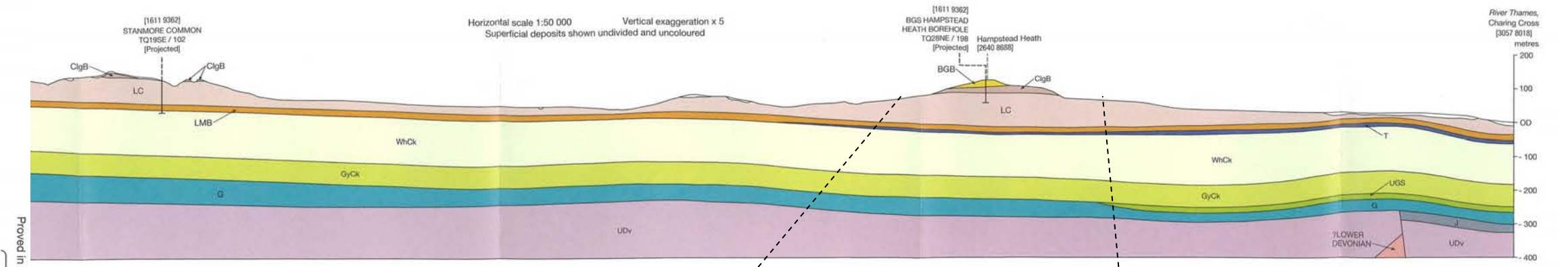
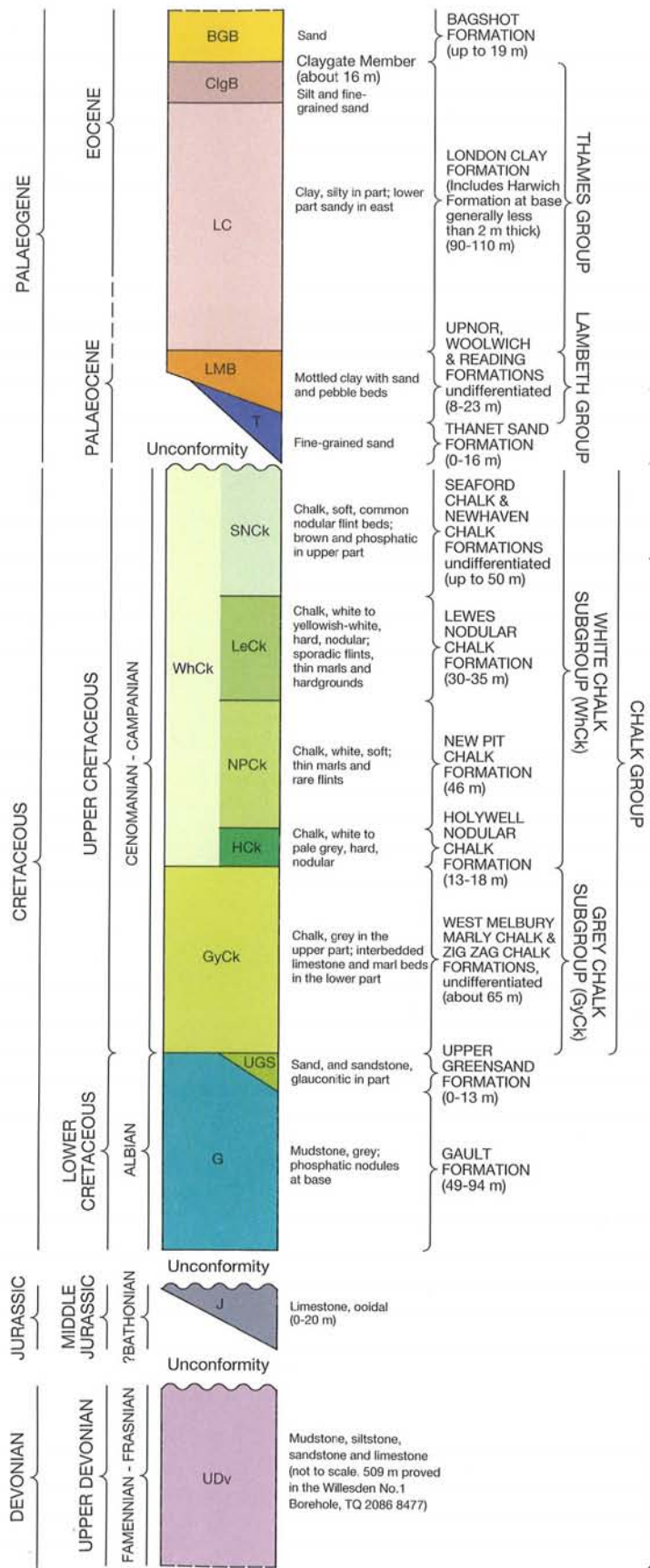
FIGURE

**4**

NB. Geological boundaries are largely indicative based on available geological mapping data

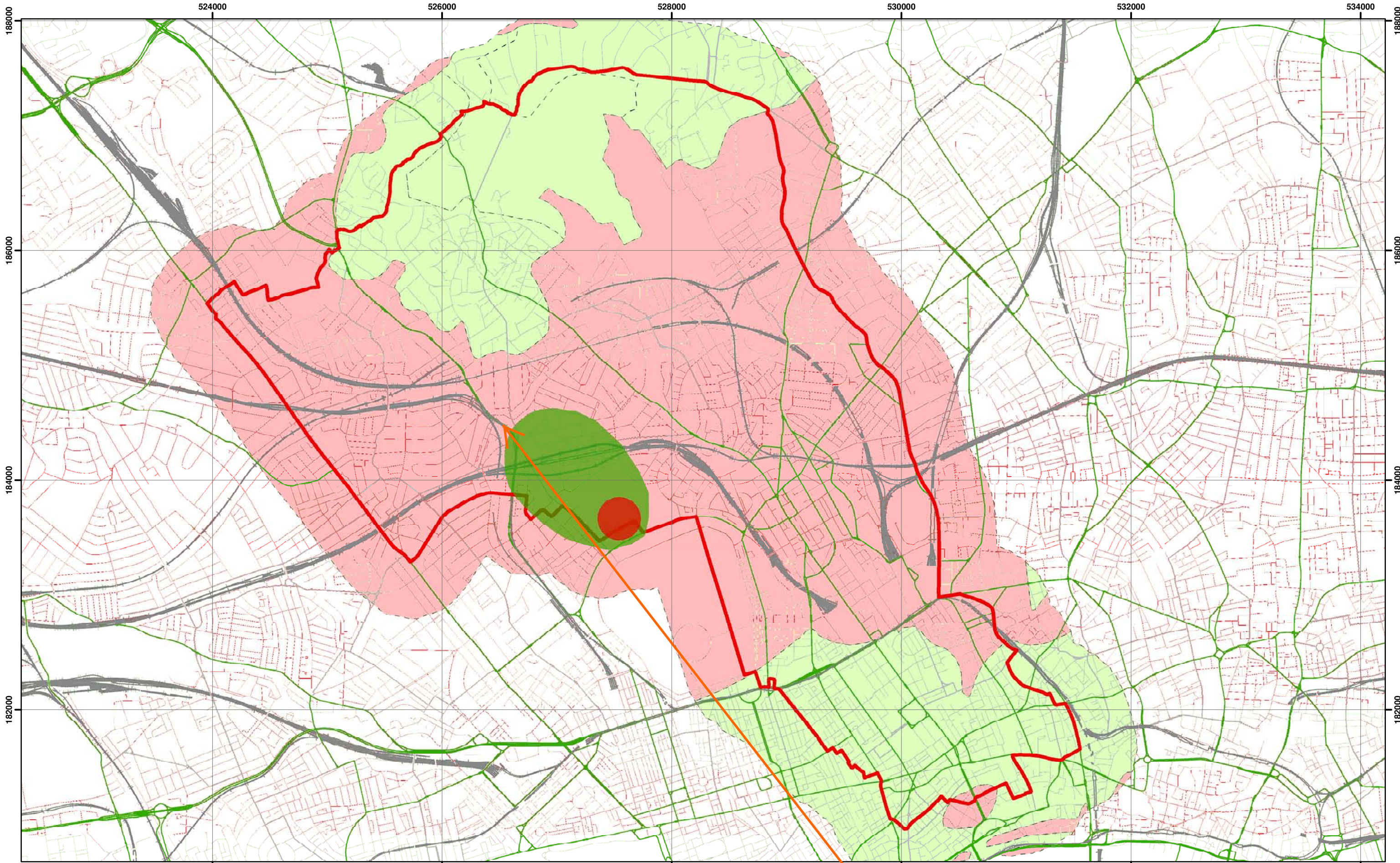
**GENERALIZED VERTICAL SECTION**

Scale 1:2500 (1 cm to 25 m)



Source - British Geological Society, 1:50,000 Series England and Wales Sheet 256 – North London

**Camden Geological, Hydrogeological and Hydrological Study**  
Geological Long Section (NW – SE)



Environment Agency Aquifer Designation based on BGS Mapping



Scale at A3: 1:30,000

Coordinate System:  
British National Grid  
GCS\_OSGB\_1936



**Legend**

- |                   |                            |                               |
|-------------------|----------------------------|-------------------------------|
| Borough of Camden | <b>Aquifer Designation</b> | <b>Source Protection Zone</b> |
| Railway Lines     | Secondary A Aquifer        | Outer Source Protection Zone  |
| A Roads           | Unproductive Strata        | Inner Source Protection Zone  |

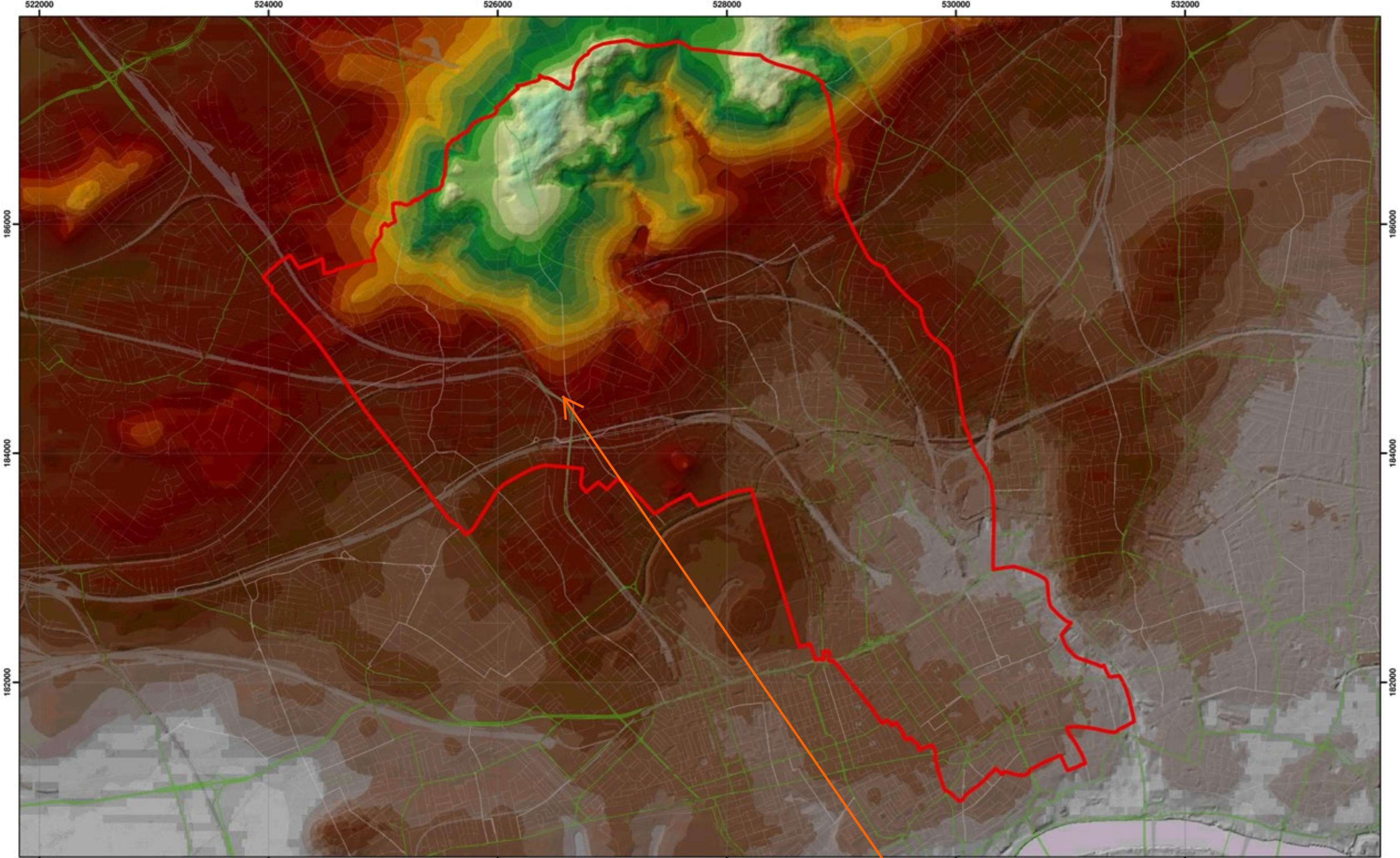
NB. Aquifer boundaries are indicative based on available geological mapping data

9-12 New College Parade,  
Finchley Road

**Camden Geological, Hydrogeological  
and Hydrological Study**  
Camden Aquifer Designation Map

213923

FIGURE **8**



Topographic map based on digital terrain model provided by Camden Borough Council

Scale at A3: 1:30,000

Coordinate System:  
British National Grid  
GCS\_OSGB\_1936

0 0.375 0.75 1.5 2.25 3 3.75  
Kilometers

**Legend**

- London Borough of Camden
- Railway Lines
- A Roads

**DTM Terrain**  
\* Window Size: 20,000

125 - 130	90 - 95	55 - 60	20 - 25
120 - 125	85 - 90	50 - 55	15 - 20
115 - 120	80 - 85	45 - 50	10 - 15
110 - 115	75 - 80	40 - 45	5 - 10
105 - 110	70 - 75	35 - 40	0 - 5
100 - 105	65 - 70	30 - 35	-5 - 0
95 - 100	60 - 65	25 - 30	-7.4 - -5

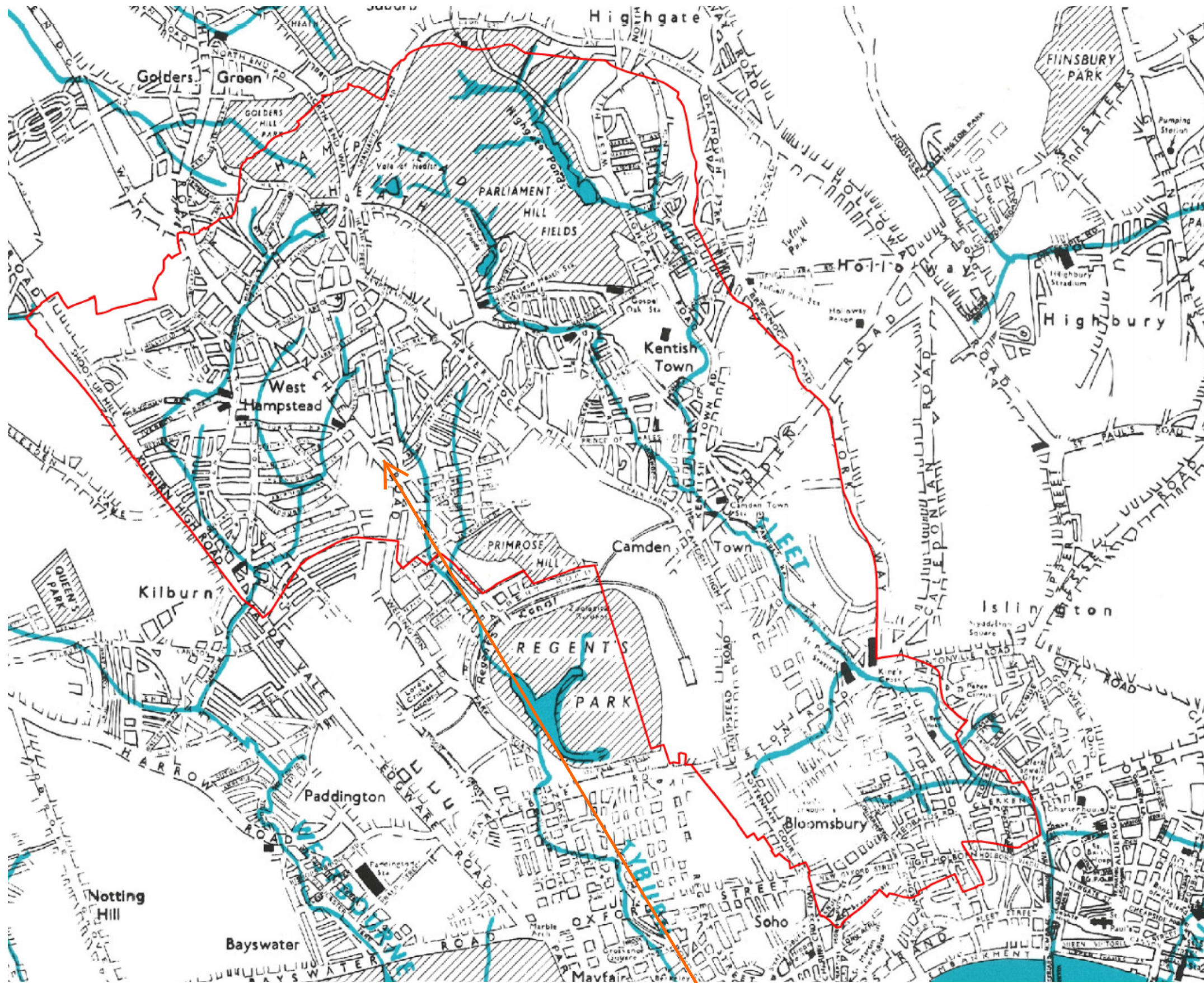
**Elevation**

145 - 150
140 - 145
135 - 140
130 - 135

9-12 New College Parade,  
Finchley Road

**Camden Geological, Hydrogeological  
and Hydrological Study**  
Camden Topographic Map

213923



9-12 New College Parade,  
Finchley Road

**Camden Geological, Hydrogeological  
and Hydrological Study  
Watercourses**

Source – Barton, Lost Rivers of London