

7.6 Appearance - Expression and Materials



Decorative Tiles

Decorative tiles applied to communal entrance to both floor and vertical surfaces.



Reconstituted Stone

Reconstituted stone polished finish, colour light grey. Applied to stone banding, balcony and window surrounds.

7.6 Appearance - Expression and Materials

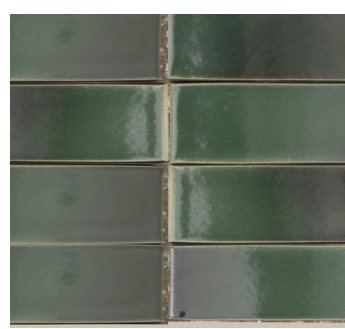
Residential Entrances



Plot JKL communal entrance and maisonette entrance on Agar Grove



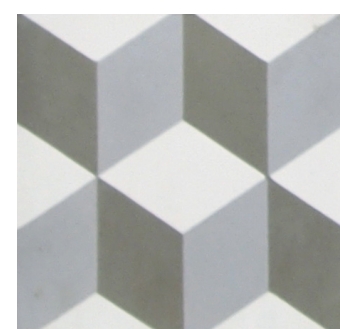
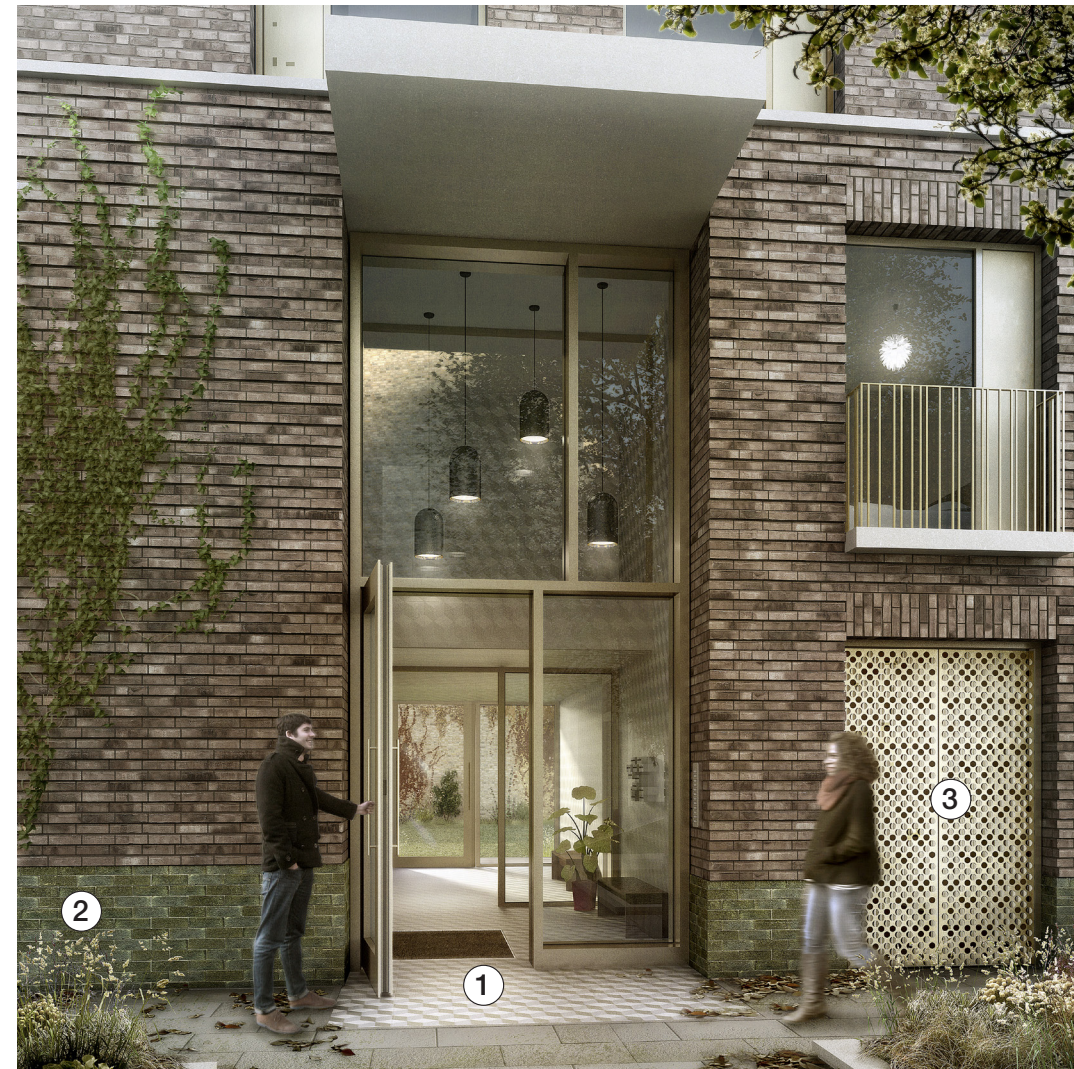
① Textured clinker brick, engobe/ coal fired. Colour - brown/ purple



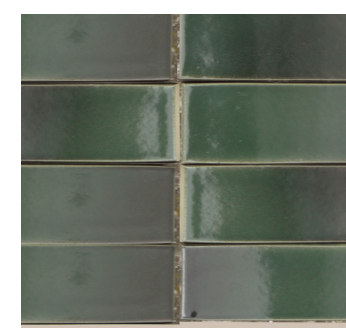
② Glazed brick band to base of building



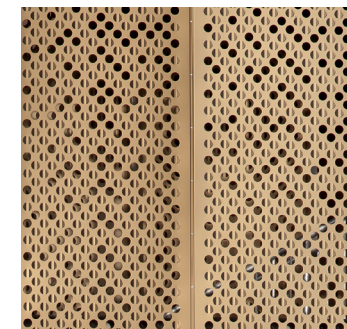
③ Decorative tile applied to floor and wall surface, extends to extent of recess internally.



① Decorative tile applied to floor and wall surface, extends to extent of recess internally.



② Glazed brick band to base of building



③ Anodised light bronze/ gold aluminium door to bin stores.

7.6 Appearance - Expression and Materials

Residential Entrances

Residential entrances have been located on existing, interfacing and new streets around and through the site. Points of entry will serve to activate streets through footfall and will themselves, be afforded security through overlooking.

Courtyard gates typically offer access to shared private amenity space and bicycle storage. Shared residential entrance cores can typically be accessed from the streetside perimeter of a plot and also from within the courtyard. Entrances to individual dwellings also line the streets and bring associated life to them.

The communal entrances, some of which are double height, are highly legible and, although following a set of principles each buildings entrance is bespoke, making it specific to the building it serves and adding further moments of interest to the street. Areas of plant, refuse and recycling have been sited in less sensitive locations so as not to impact on the street scape.



Plots G private residential entrance with angled side window and low level planter, typical to Plots C, E, G and I





7.6 Appearance - Expression and Materials

Private Amenity Space

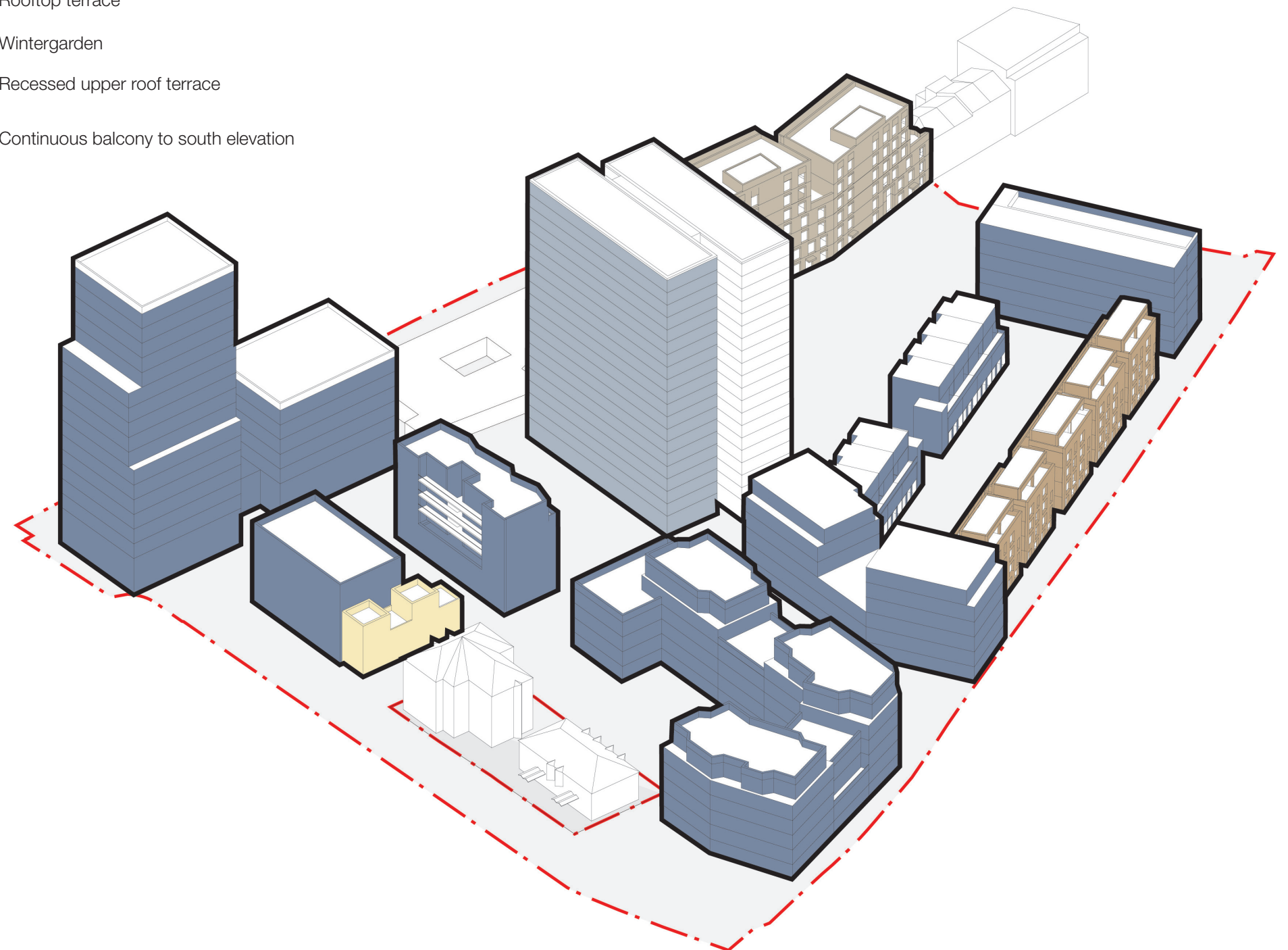
Private amenity is a key offer of the new scheme. The current estate is completely lacking in this respect and so it is an important consideration both in terms of the offer of high quality, well sized external space and also in its appearance.

A variety of balcony types - recessed, winter gardens and continuous have been deployed across different plots to help characterise each in a unique way. The disposition of these types address different conditions recessed balconies are used to animate the courtyard spaces whilst the glazed wrap Lulworth House.

The specification of colour and material of balconies of polyester powder coated metal uprights in light bronze/gold provides coherence to the masterplan.

KEY

- Recessed balcony
- Rooftop terrace
- Wintergarden
- Recessed upper roof terrace
- Continuous balcony to south elevation



Opposite: Illustrative View showing balcony types of Plots B, CDE and Lulworth

Above: Diagram identifying balcony types