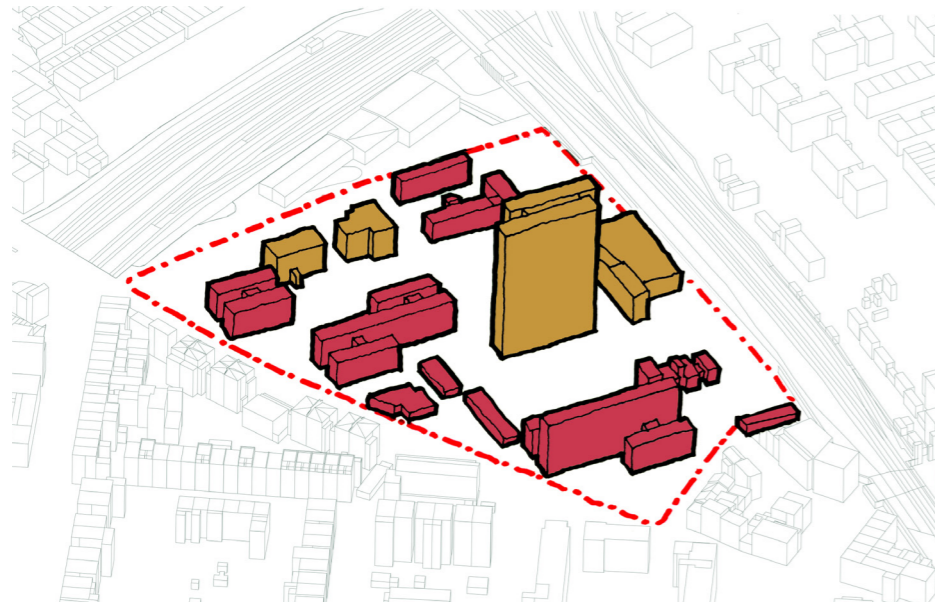


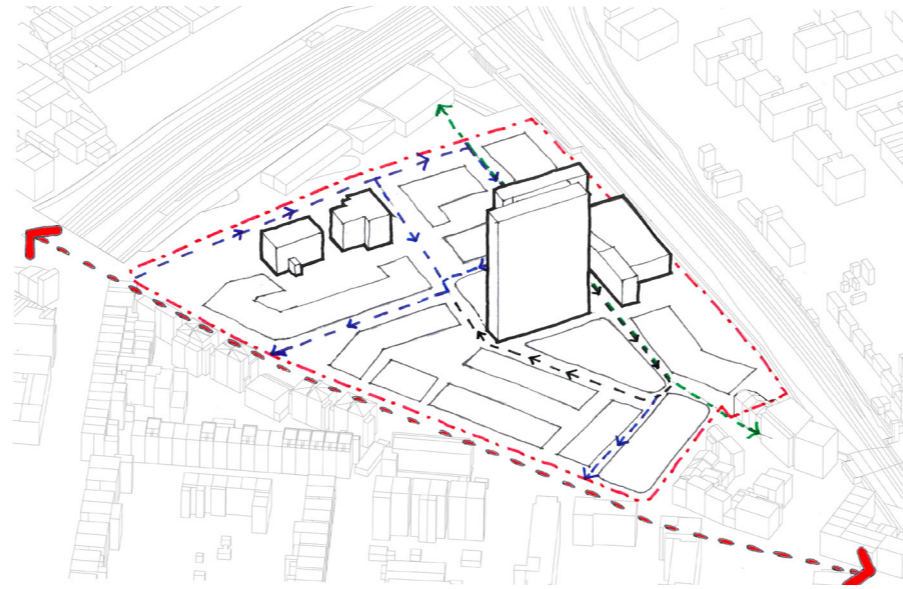
5.3 Key Moves

Existing Site



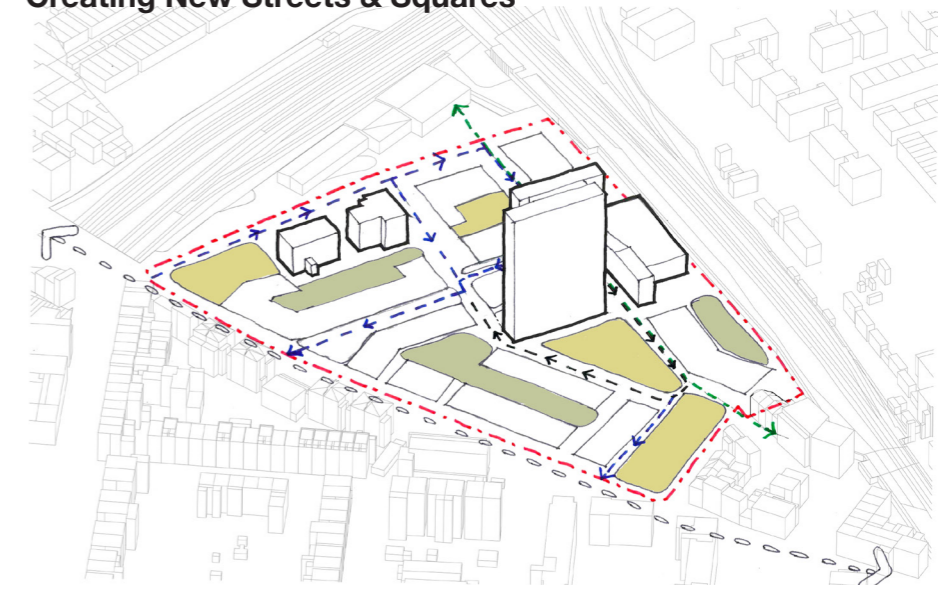
■ buildings to be retained ■ buildings to be demolished

Routes & Plots



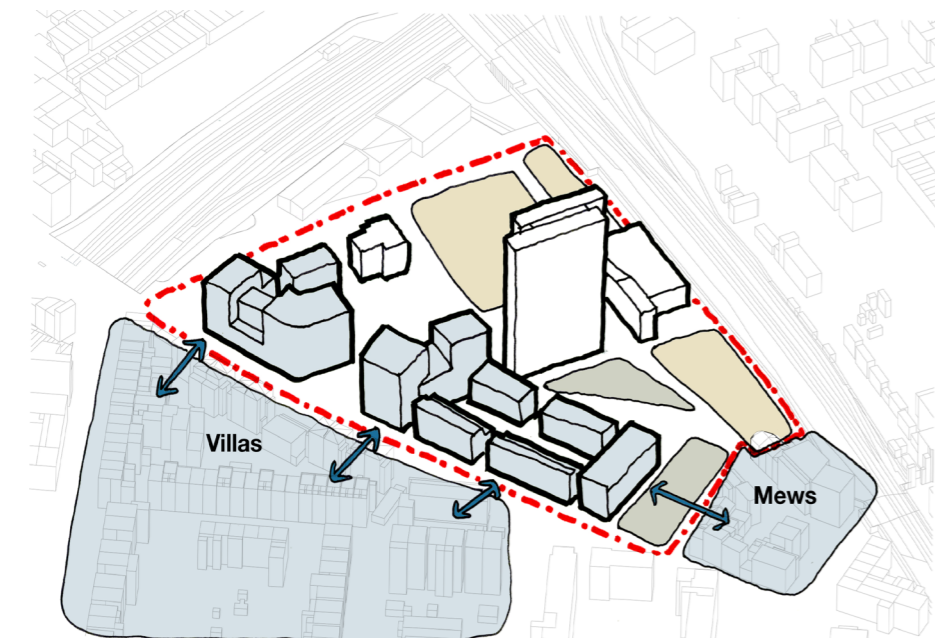
↔ main road ↔ green streets □ principle plots for development
↔ principle vehicular route ↔ entrance through the grove

Creating New Streets & Squares



■ public green spaces and squares ■ private green spaces

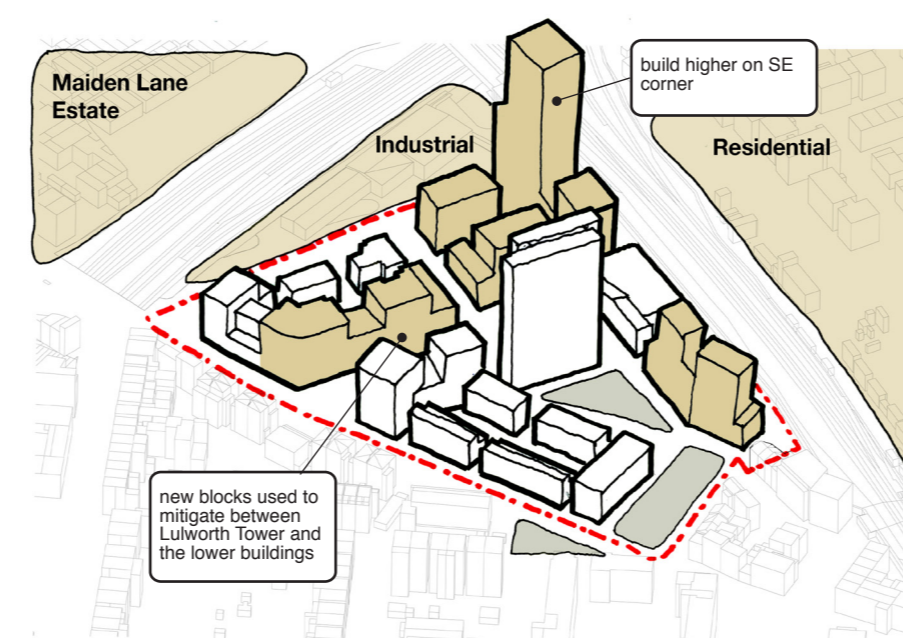
Northern Sweep of Site



Villas

Mews

Southern & Central Portions of Site



Maiden Lane Estate

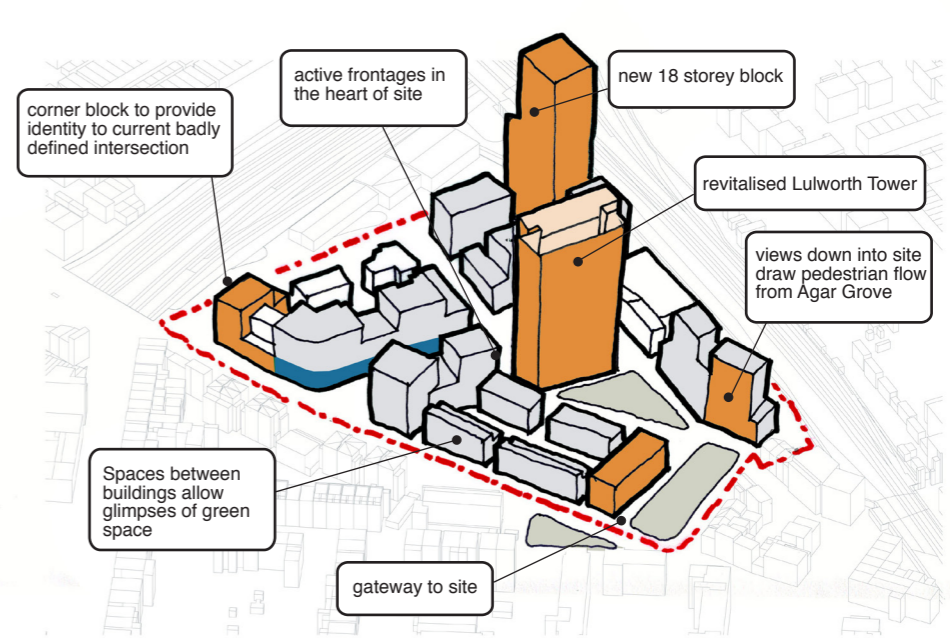
Industrial

Residential

build higher on SE corner

new blocks used to mitigate between Lulworth Tower and the lower buildings

Creating New Landmarks, Defining the Edges of Site



corner block to provide identity to current badly defined intersection

active frontages in the heart of site

new 18 storey block

revitalised Lulworth Tower

views down into site draw pedestrian flow from Agar Grove

Spaces between buildings allow glimpses of green space

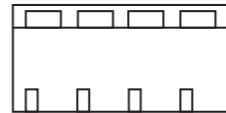
gateway to site

5.4 Defined London Typologies

The area has a wide range of different typologies, which is representative of the wider London context. By identifying the typologies of terrace, villa, mansion, & tower, it is intended that the scheme can respond to these, and form a new place that relates to these local precedents, therefore 'stitching in' and forming a microcosm of the local area, as well as London as a whole, with a variety of environments that form and shape public space in different ways.

The images on these pages show precedents, historical, contemporary as well as ones from the local area, that the design team used as a reference in designing these various buildings types.

TERRACE



Definition:
An unbroken series of houses with front doors onto the street, with individual houses often articulated



Precedent image: Stratford Villas

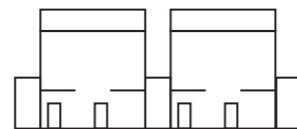


Precedent image: Cleaver Square, London



Precedent image: Biq Architects

VILLA



Definition:
Individual or paired houses with clear gaps between each pair and its neighbours. Carefully proportioned, often with decoration, and with entrances onto the street



Precedent image: Agar Grove Villas



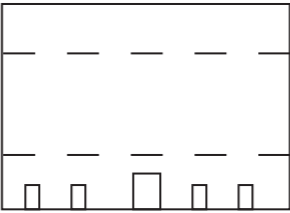
Precedent image: Darborne & Darke, Lillington Gardens



Precedent image: Mecanoo

5.4 Defined London Typologies

MANSION



Definition:
A large, defined grouping of dwellings, at least 5 storeys tall, with defined, often central communal entrance ground floor, ground floor dwellings have entrances onto the street and flats above. Proportioning devices carefully used in controlling reading the building from the street and from a distance.



Precedent image: Cliff Mansions, Camden

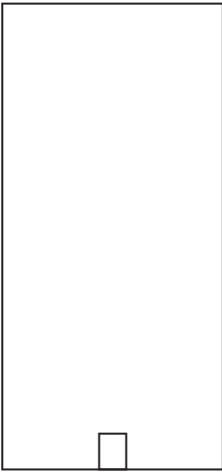


Precedent image, Millbank Mansions, Pimlico



Precedent image: Baumschlager and Eberle

TOWER



Definition:
Tall building with vertical emphasis and efficient use of site area. Height will make a landmark of the building. Single entrance at ground, often with a concierge. Strong repetition of facade bays due to constraints of structure.



Precedent image: H10 Hotel, by Maccreanor Lavington

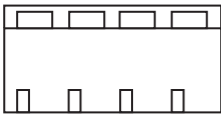
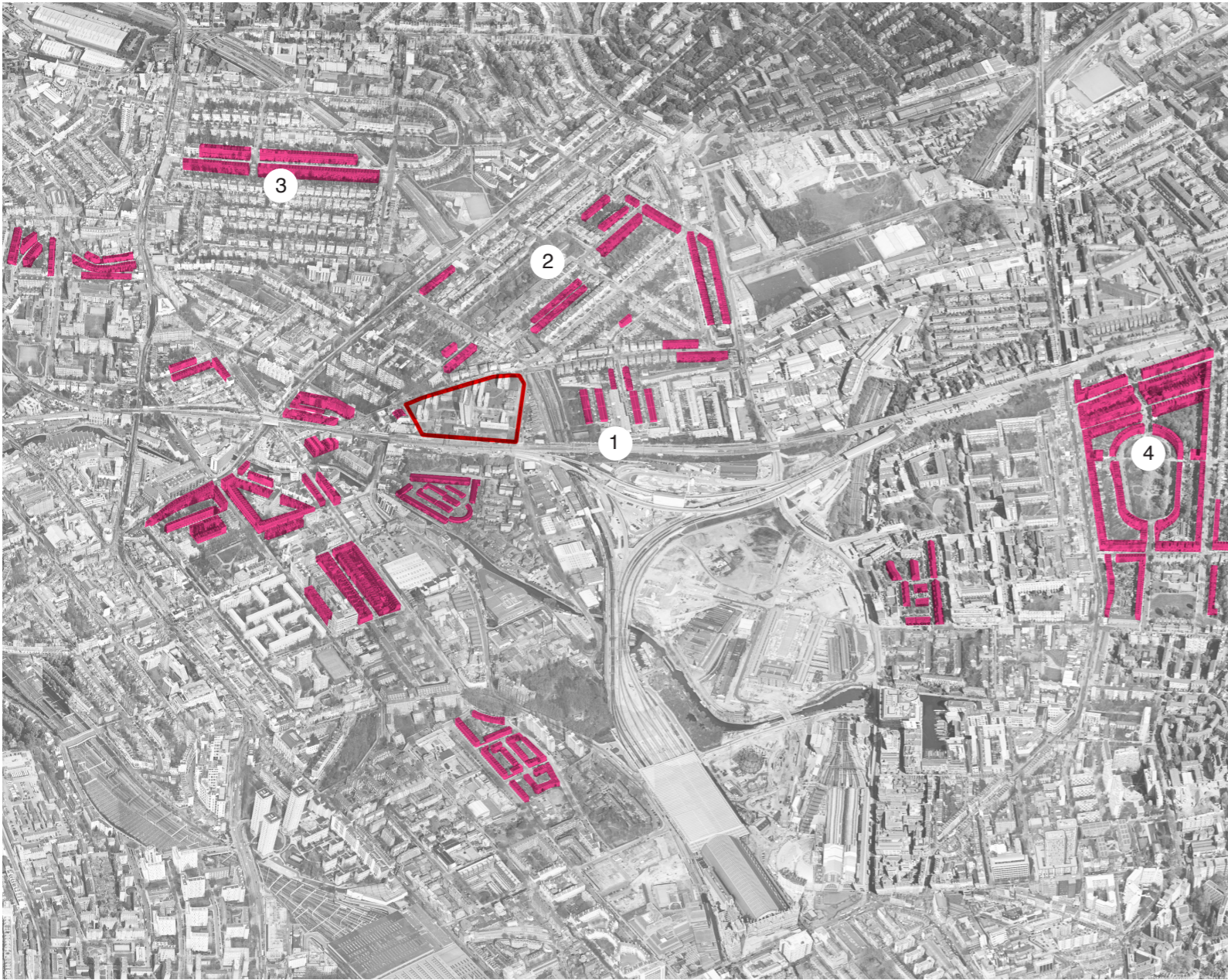


Precedent image: PRP architects



Precedent image: Diener and Diener

5.5 London Context Typology Studies - Terraces



Terrace



MAIDEN LANE
2 storeys



STRATFORD VILLAS
5 storeys



GAISFORD STREET
4 storeys



THORNHILL CRESCENT
4 storeys