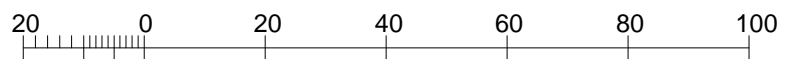
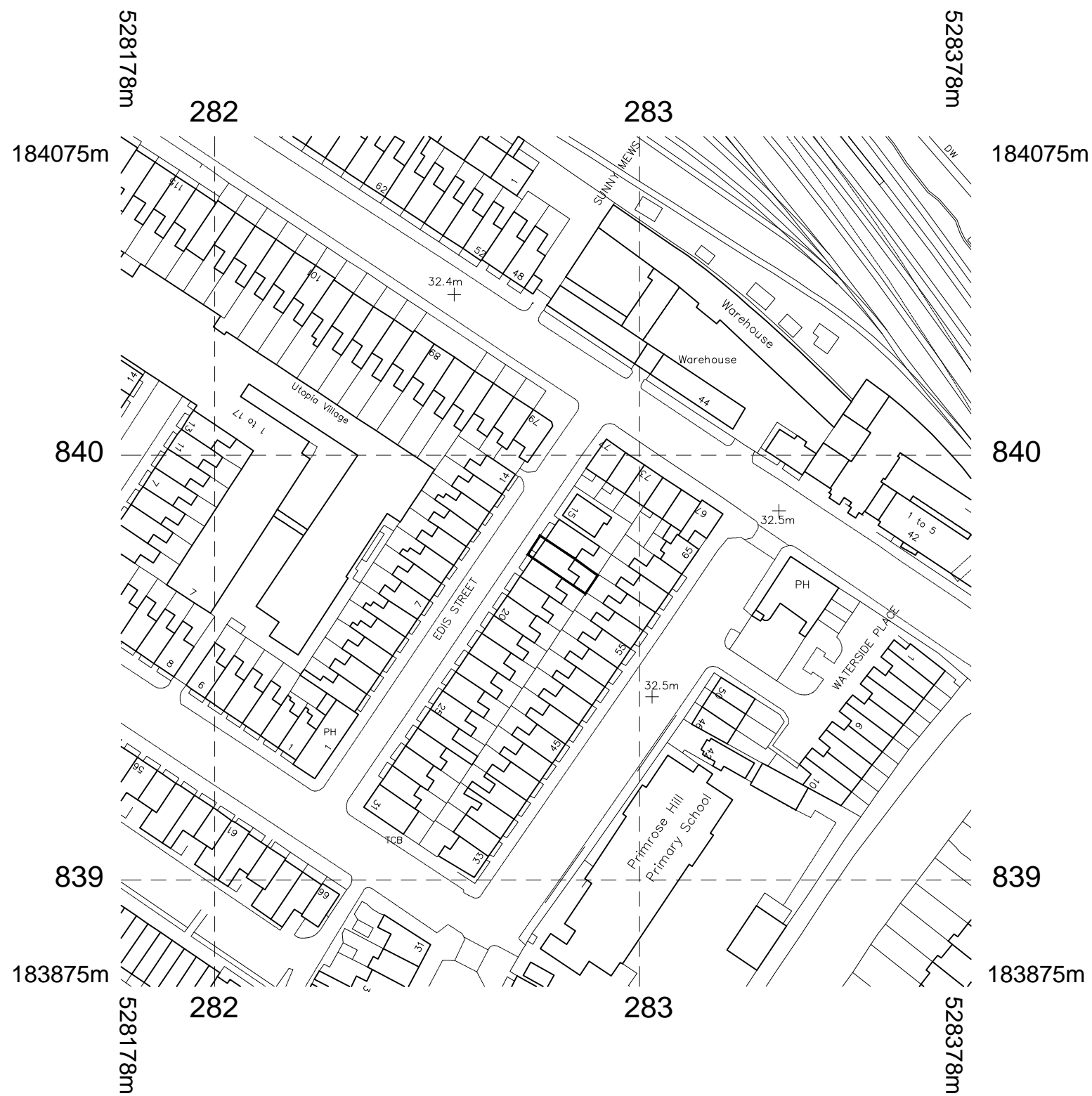


NOTES

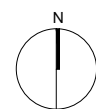
DO NOT SCALE FROM THIS DRAWING

PLANNING

NOTE:



Metres



Martin Evans
Architects

18 Charlotte Road
London EC2A 3PB
tel 020 7729 2474

JOB
17, EDIS STREET
NW1 8LE
LONDON

TITLE
SITE PLAN
(PROPOSED)

DATE	17.12.2013
SCALE	1:1250 @ A3
DRAWN	B.A.

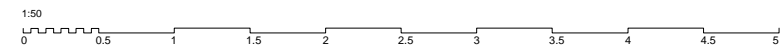
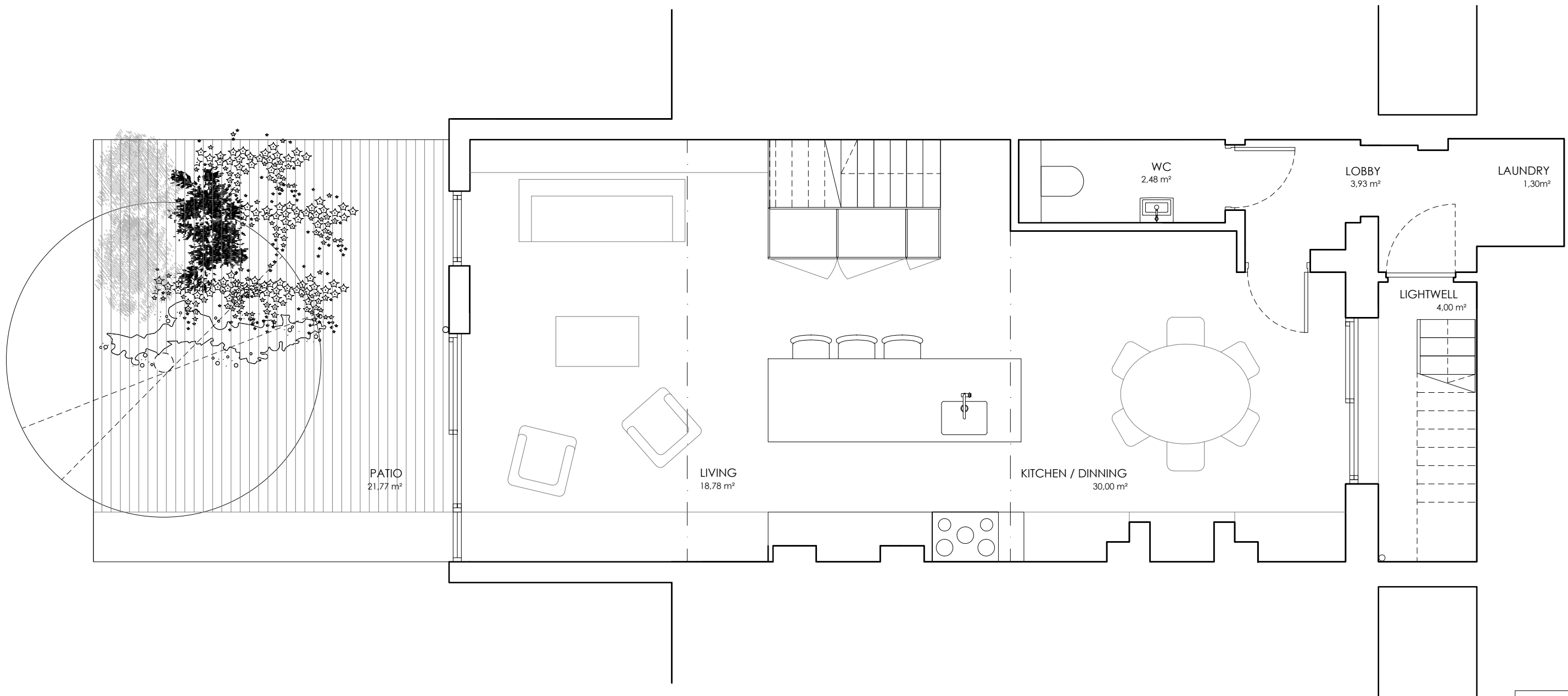
DRAWING NO. EDI-PL-GA-00

NOTES

DO NOT SCALE FROM THIS DRAWING

PLANNING

NOTE:



Martin Evans
Architects 
18 Charlotte Road
London EC2A 3PB
tel 020 7729 2474

JOB
17, EDIS STREET
NW1 8LE
LONDON

TITLE
BASEMENT
(PROPOSED)

DATE	17.12.2013
SCALE	1:50 @ A3
DRAWN	B.A.

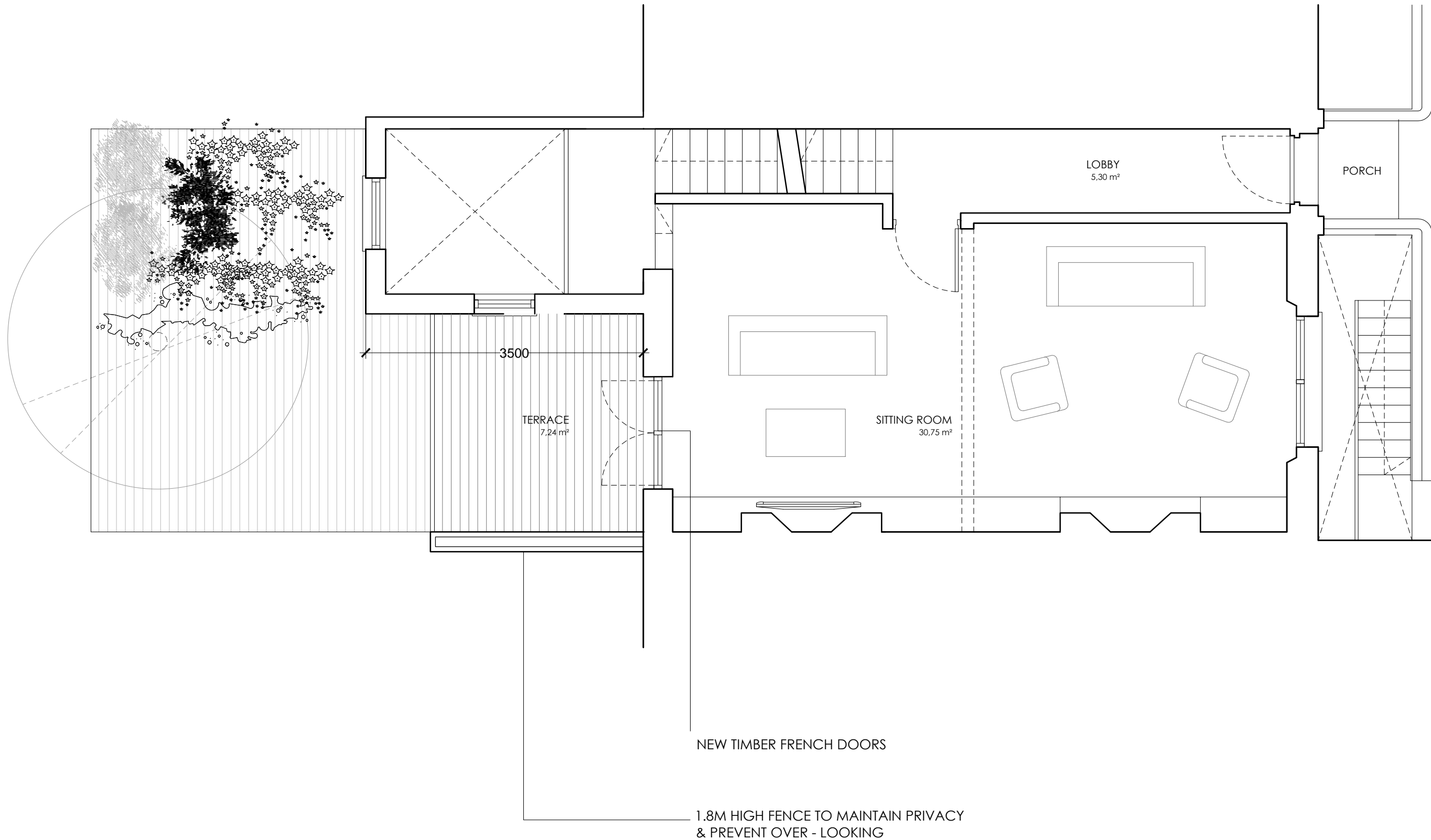
DRAWING NO. EDI-PL-GA-01

NOTES

DO NOT SCALE FROM THIS DRAWING

PLANNING

NOTE:



Martin Evans
Architects

18 Charlotte Road
London EC2A 3PB
tel 020 7729 2474

JOB
17, EDIS STREET
NW1 8LE
LONDON

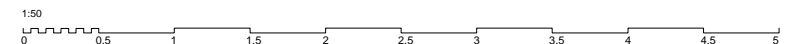
TITLE
GROUND FLOOR
(PROPOSED)

DATE 17.12.2013

SCALE 1:50 @ A3

DRAWN B.A.

DRAWING NO. EDI-PL-GA-02

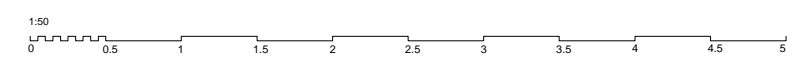
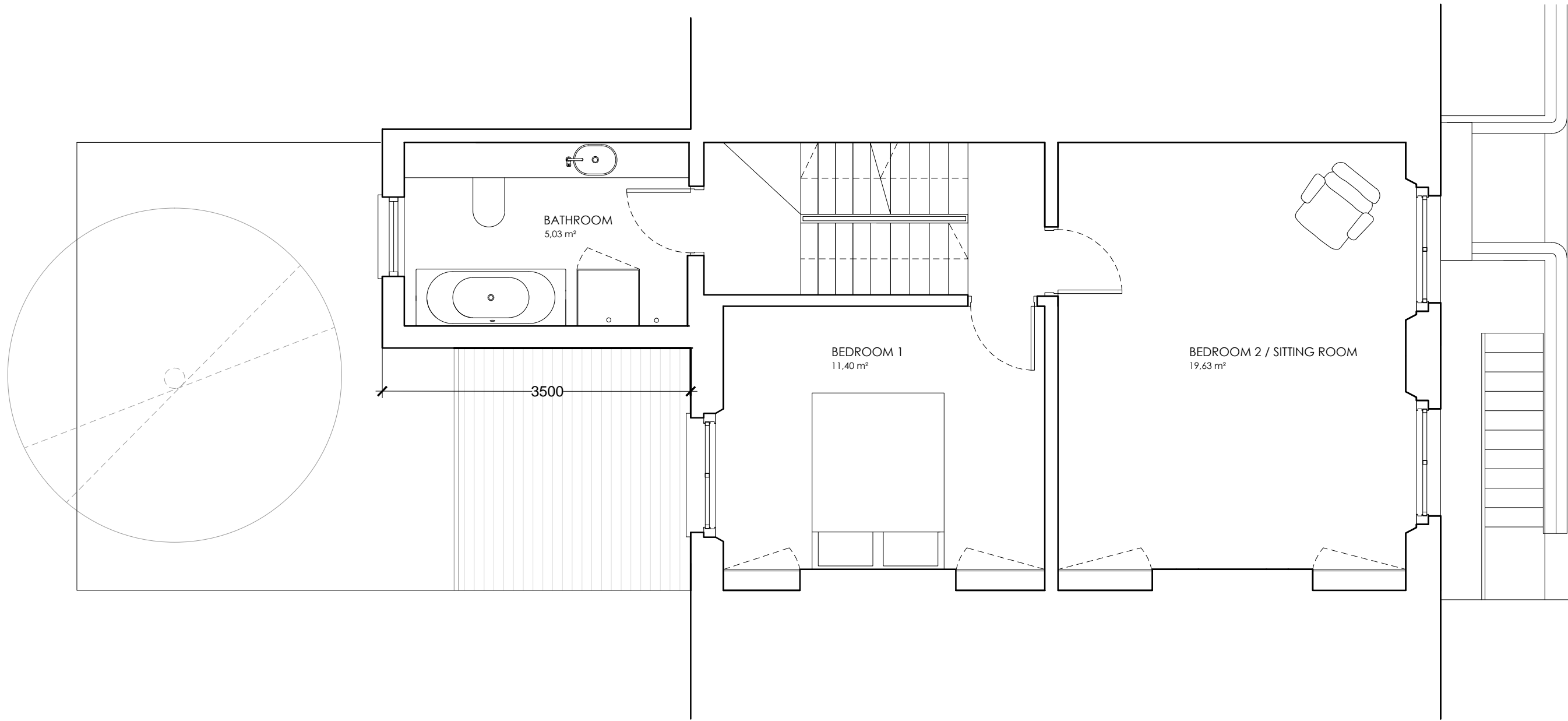


NOTES

DO NOT SCALE FROM THIS DRAWING

PLANNING

NOTE:



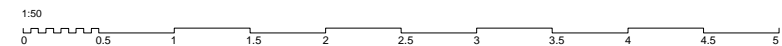
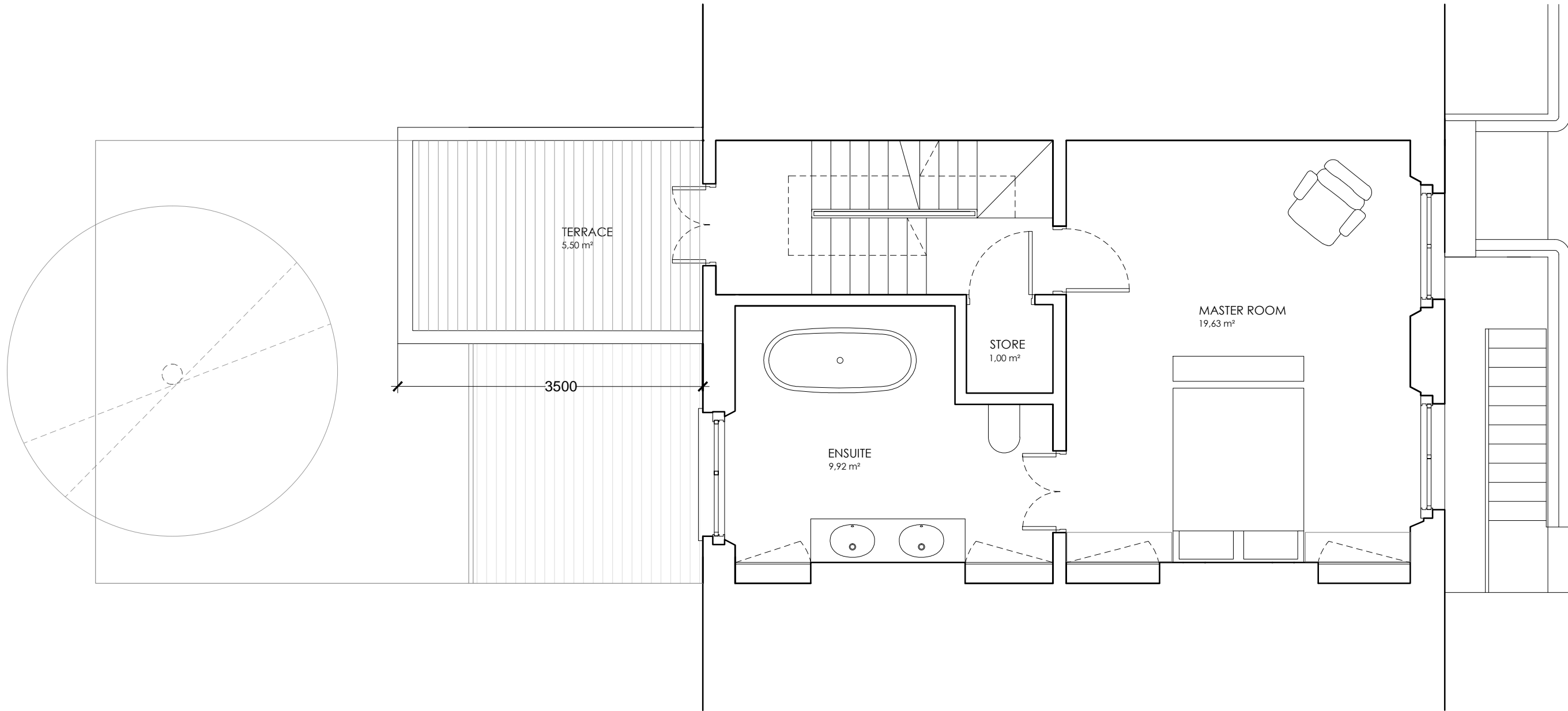
Martin Evans Architects	
18 Charlotte Road London EC2A 3PB tel 020 7729 2474	
JOB 17, EDIS STREET NW1 8LE LONDON	
TITLE FIRTS FLOOR (PROPOSED)	
DATE	17.12.2013
SCALE	1:50 @ A3
DRAWN	B.A.
DRAWING NO. EDI-PL-GA-03	

NOTES

DO NOT SCALE FROM THIS DRAWING

PLANNING

NOTE:



Martin Evans
Architects

18 Charlotte Road
London EC2A 3PB
tel 020 7729 2474

JOB
17, EDIS STREET
NW1 8LE
LONDON

TITLE
SECOND FLOOR
(PROPOSED)

DATE 17.12.2013

SCALE 1:50 @ A3

DRAWN B.A.

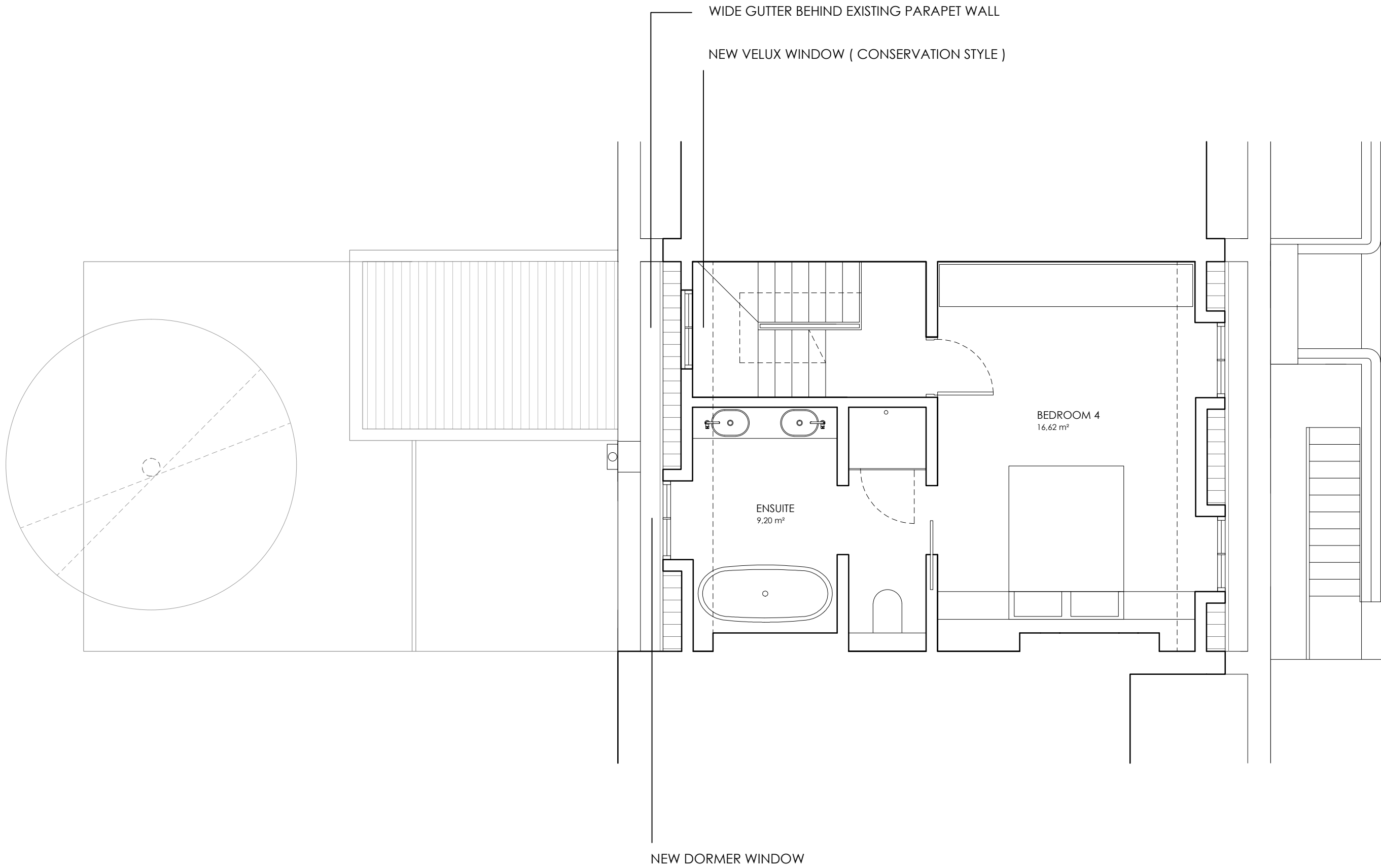
DRAWING NO. EDI-PL-GA-04

NOTES

DO NOT SCALE FROM THIS DRAWING

PLANNING

NOTE:



NEW DORMER WINDOW WITH TRADITIONAL TIMBER SASH WINDOW

Martin Evans
Architects

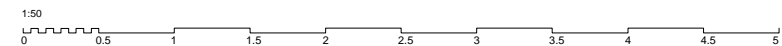
18 Charlotte Road
London EC2A 3PB
tel 020 7729 2474

JOB
17, EDIS STREET
NW1 8LE
LONDON

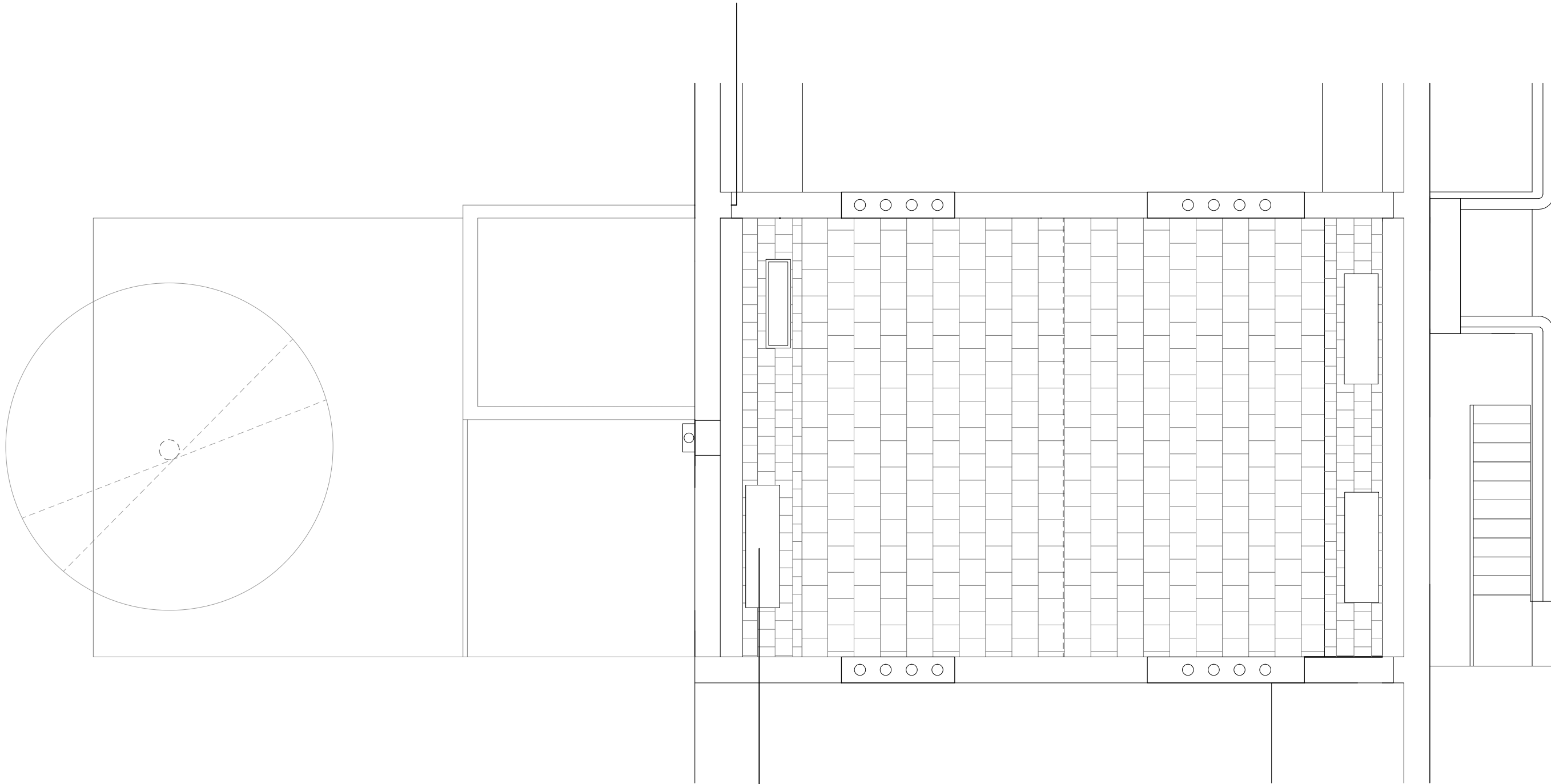
TITLE
ATTIC FLOOR
(PROPOSED)

DATE	17.12.2013
SCALE	1:50 @ A3
DRAWN	B.A.

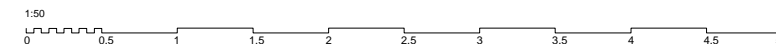
DRAWING NO. EDI-PL-GA-05



RAISED PARAPET PARTY WALL TO TRADITIONAL DESIGN



LEAD CLAD DORMER WINDOWS TO TRADITIONAL DESIGN AND
DETAILING



Martin Evans
Architects

18 Charlotte Road
London EC2A 3PB
tel 020 7729 2474

JOB
17, EDIS STREET
NW1 8LE
LONDON

TITLE
ROOF PLAN
(PROPOSED)

DATE 17.12.2013

SCALE 1:50 @ A3

DRAWN B.A.

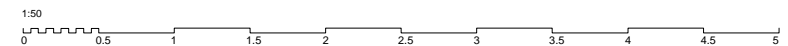
DRAWING NO. EDI-PL-GA-06

NOTES

DO NOT SCALE FROM THIS DRAWING

PLANNING

NOTE:



Martin Evans
Architects

18 Charlotte Road
London EC2A 3PB
tel 020 7729 2474

JOB
17, EDIS STREET
NW1 8LE
LONDON

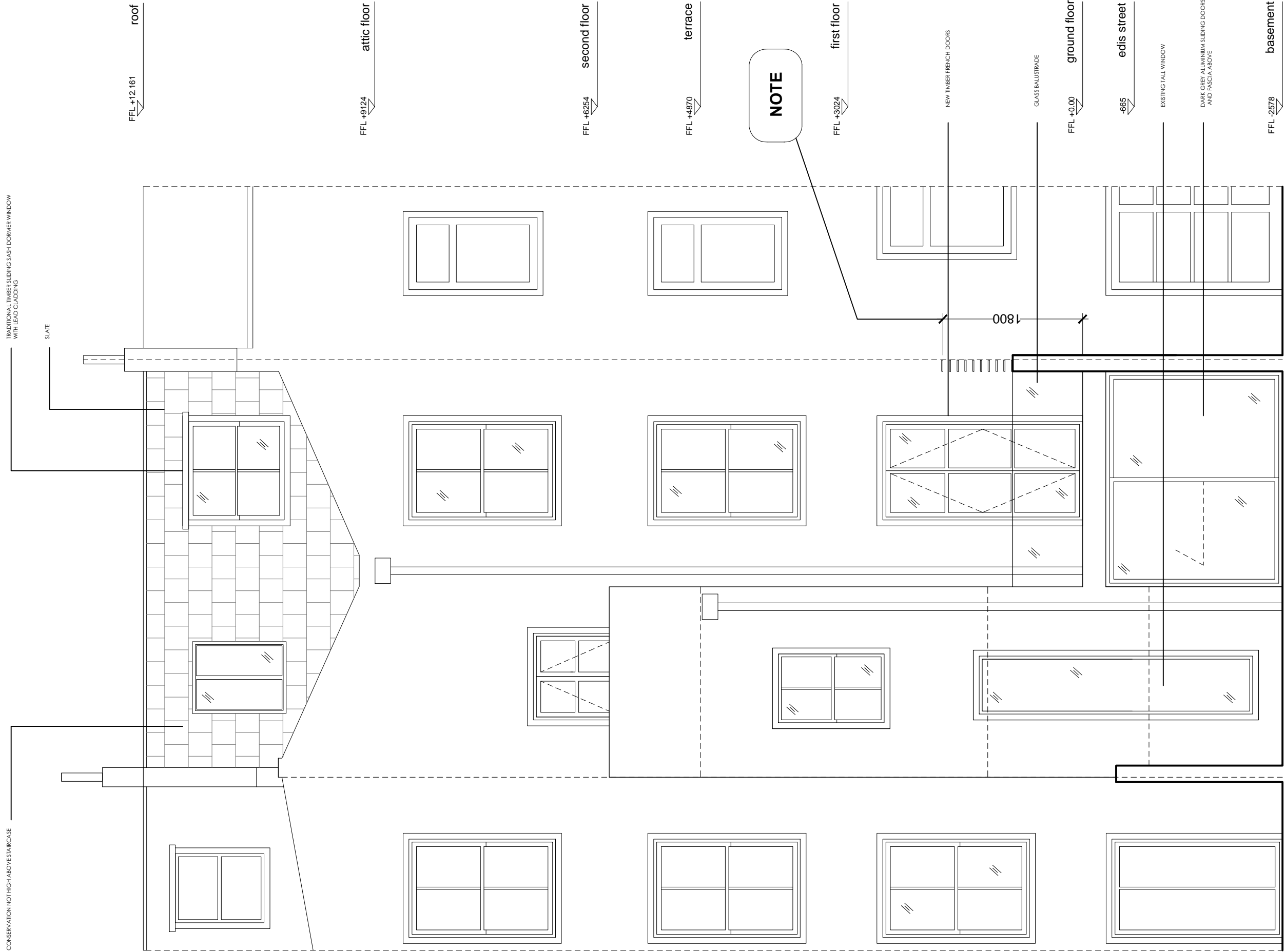
TITLE
FRONT ELEVATION
(PROPOSED)

DATE 17.12.2013

SCALE 1:50 @ A3

DRAWN B.A.

DRAWING NO. EDI-PL-GA-07



NOTE

NOTES

DO NOT SCALE FROM THIS DRAWING

PLANNING

NOTE:

Martin Evans
Architects

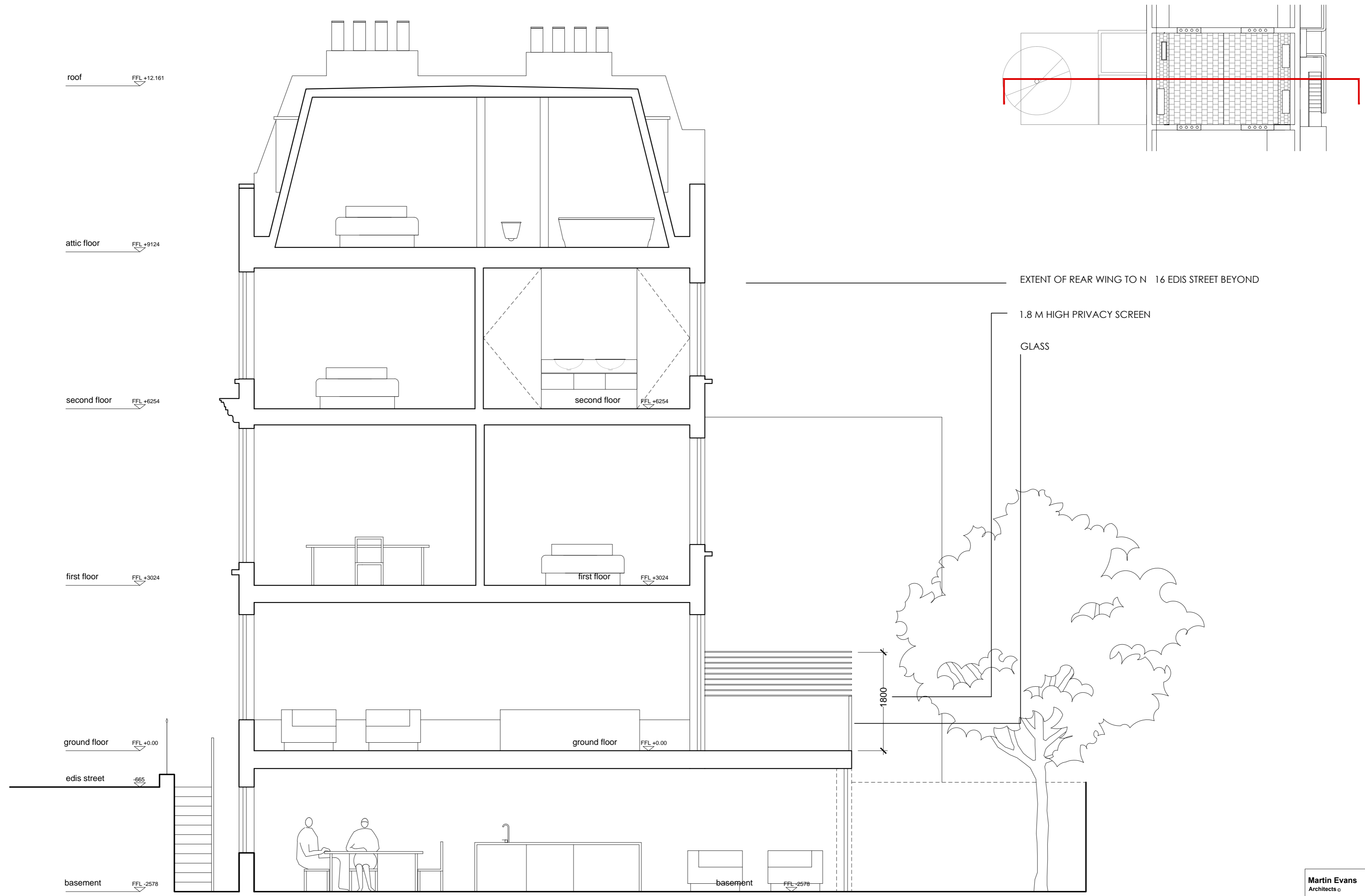
18 Charlotte Road
London EC2A 3PB
tel 020 7729 2474

JOB
17, EDIS STREET
NW1 8LE
LONDON

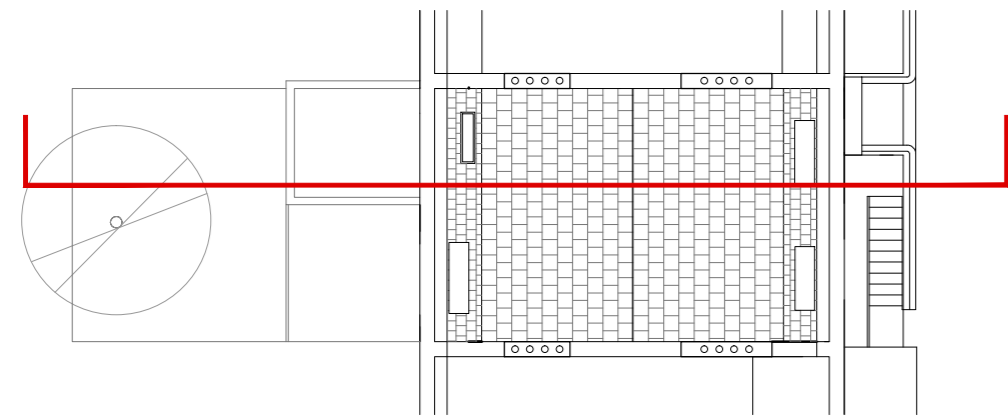
TITLE
REAR ELEVATION
(PROPOSED)

DATE	17.12.2013
SCALE	1:50 @ A3
DRAWN	B.A.

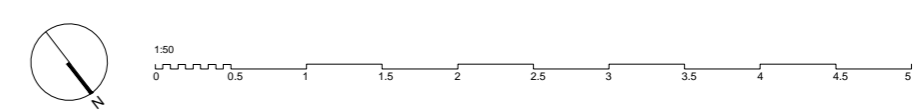
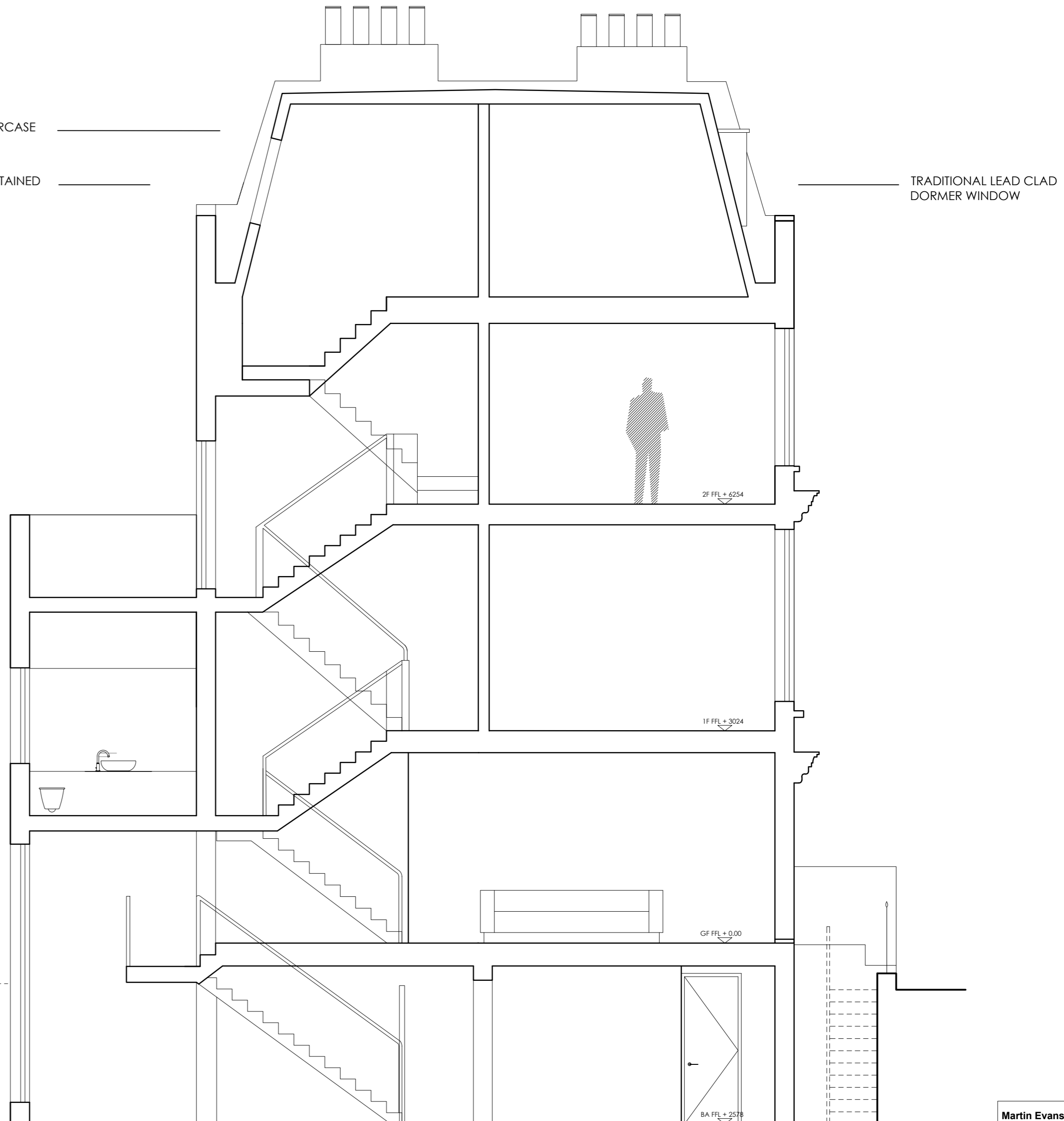
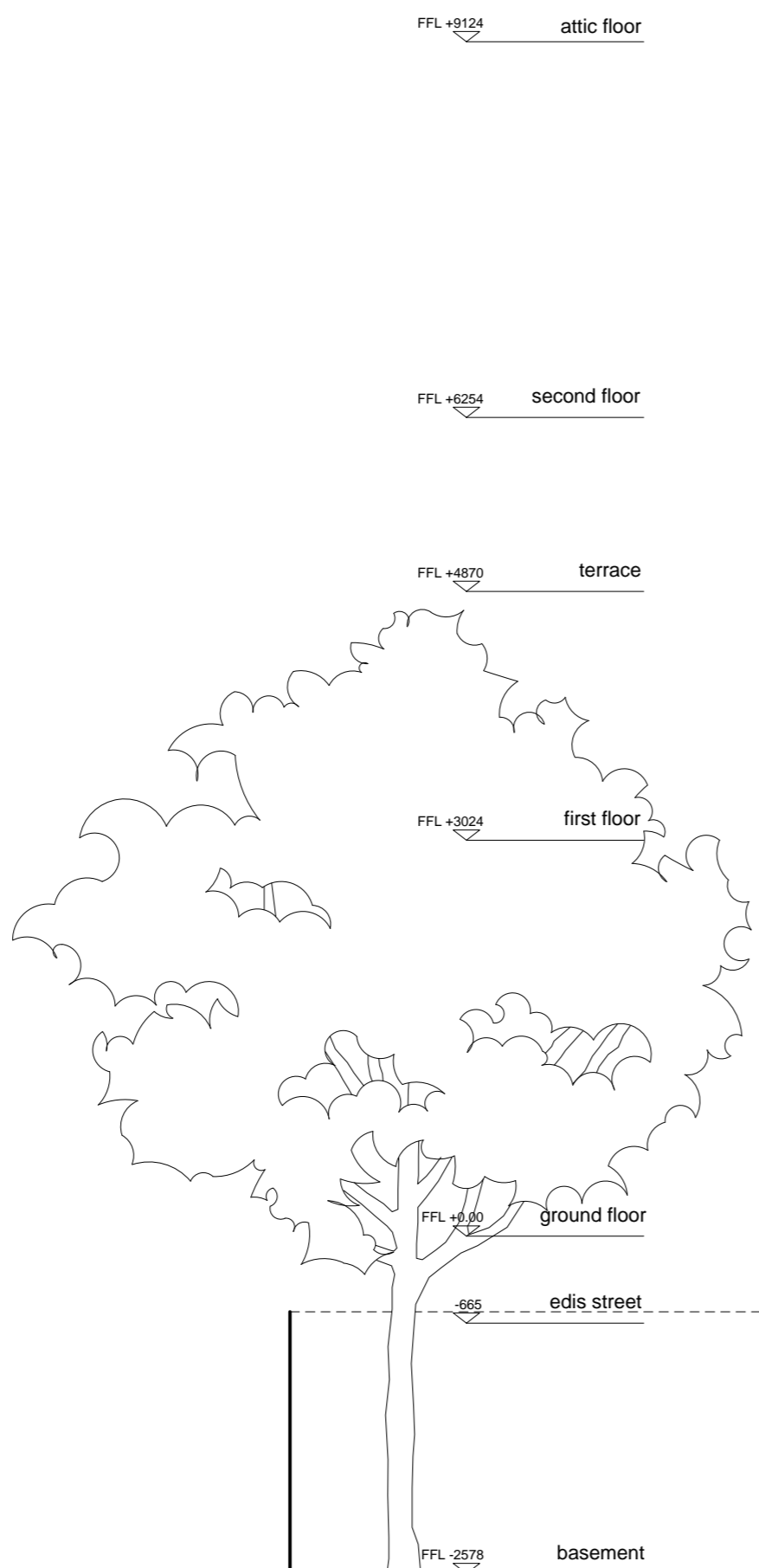
DRAWING NO. EDI-PL-GA-08



Martin Evans Architects 18 Charlotte Road London EC2A 3PB tel 020 7729 2474	
JOB 17, EDIS STREET NW1 8LE LONDON	
TITLE SECTION AA (PROPOSED)	
DATE	17.12.2013
SCALE	1:50 @ A2
DRAWN	B.A.
DRAWING NO. EDI-PL-GA-09	



FFL +12.161 roof
 CONSERVATION VELUX NOT HIGH ABOVE STAIRCASE
 ORIGINAL BUTTERFLY PARAPET WALLS TO BE RETAINED



Martin Evans Architects 18 Charlotte Road London EC2A 3PB tel 020 7729 2474	
JOB 17, EDIS STREET NW1 8LE LONDON	
TITLE SECTION BB (PROPOSED)	
DATE	17.12.2013
SCALE	1:50 @ A2
DRAWN	B.A.
DRAWING NO. EDI-PL-GA-10	